

Company: Shure, Inc.

Model: ULX2-G3

Date: 08-06-07

Photo Description: Microphone head removed



Company: Shure, Inc.

Model: ULX2-G3

Date: 08-06-07

Photo Description: Battery cover removed



Company: Shure, Inc.

Model: ULX2-G3

Date: 08-06-07

Photo Description: Battery removed; FCC ID label

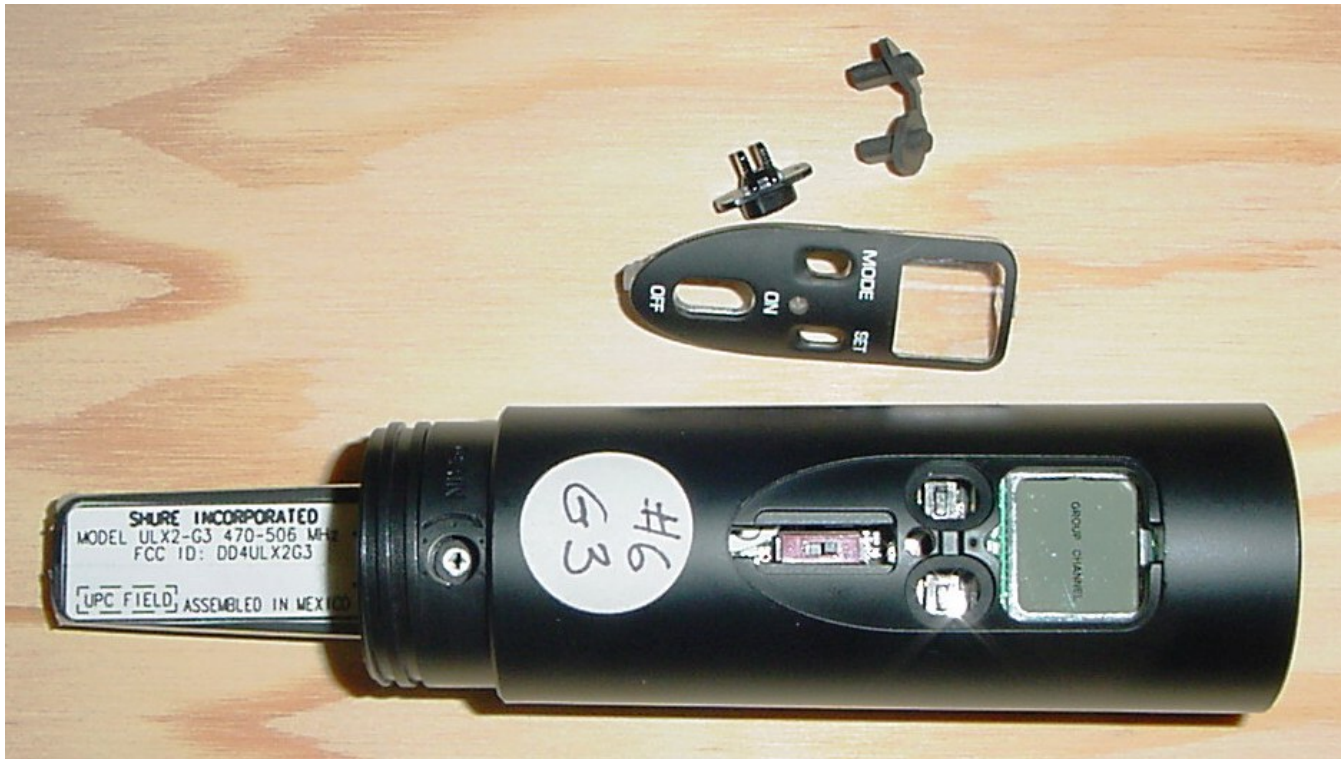


Company: Shure, Inc.

Model: ULX2-G3

Date: 08-06-07

Photo Description: Switch cover removed

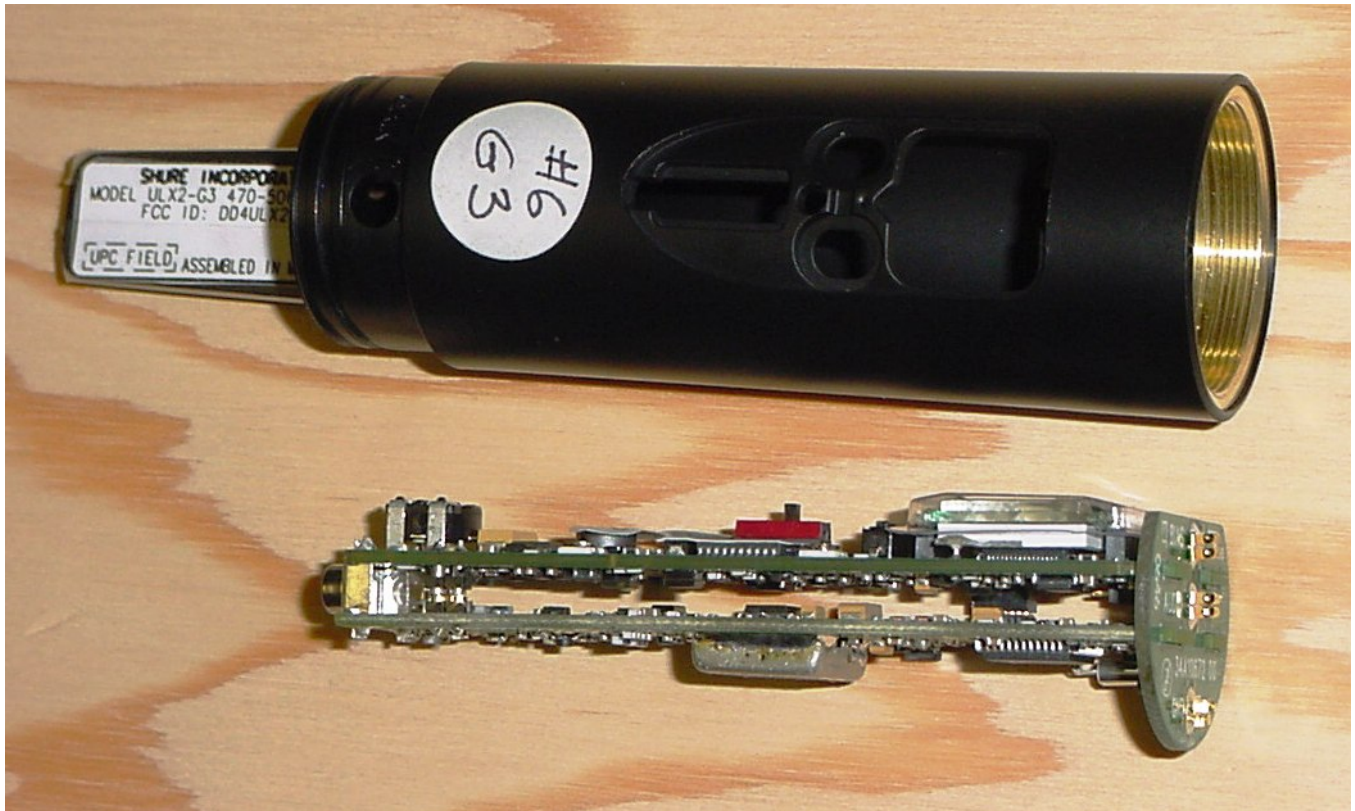


Company: Shure, Inc.

Model: ULX2-G3

Date: 08-06-07

Photo Description: Circuit board assembly removed



Company: Shure, Inc.

Model: ULX2-G3

Date: 08-06-07

Photo Description: Inside covers



Company: Shure, Inc.

Model: ULX2-G3

Date: 08-06-07

Photo Description: RF board Side 1 with shield

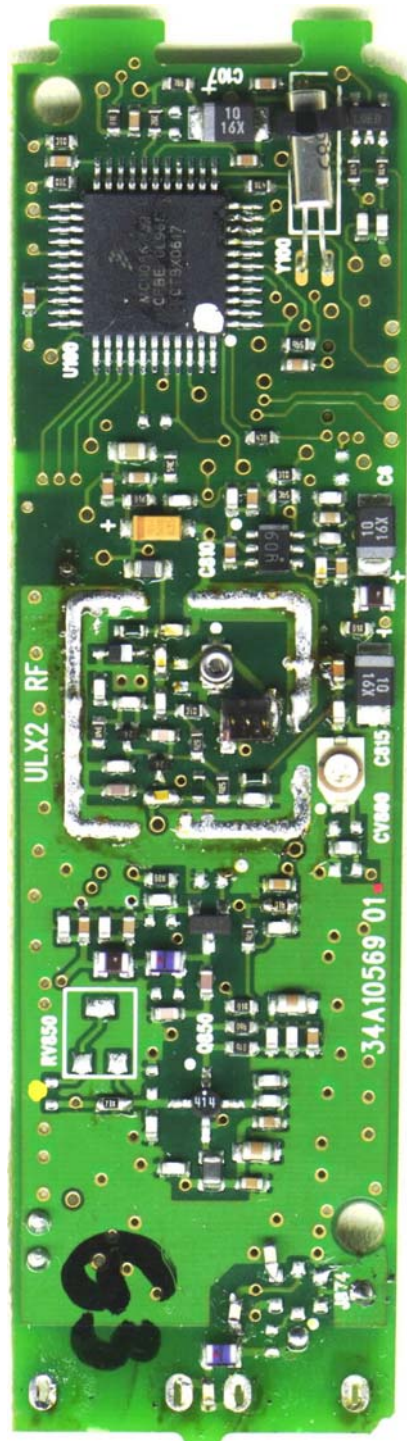


Company: Shure, Inc.

Model: ULX2-G3

Date: 08-06-07

Photo Description: RF board Side 1 with shield removed



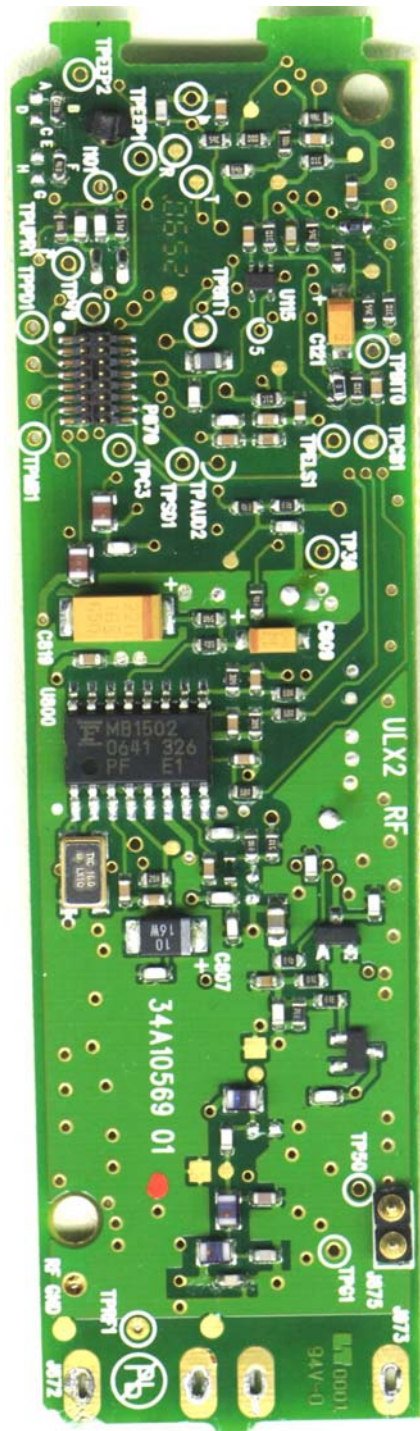


Company: Shure, Inc.

Model: ULX2-G3

Date: 08-06-07

Photo Description: RF board Side 2



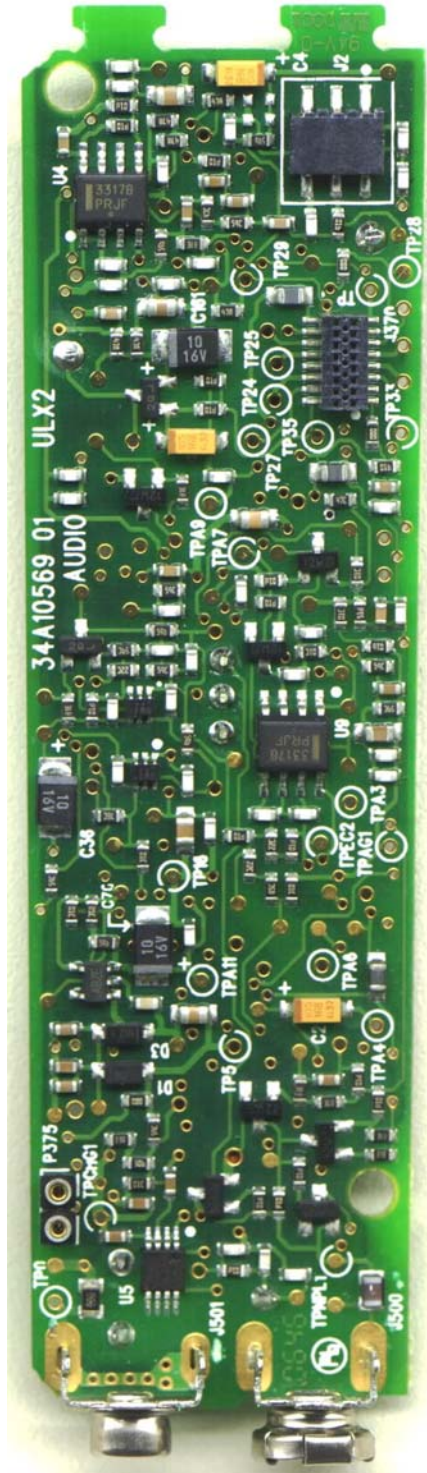


Company: Shure, Inc.

Model: ULX2-G3

Date: 08-06-07

Photo Description: Audio / Display board Side 2

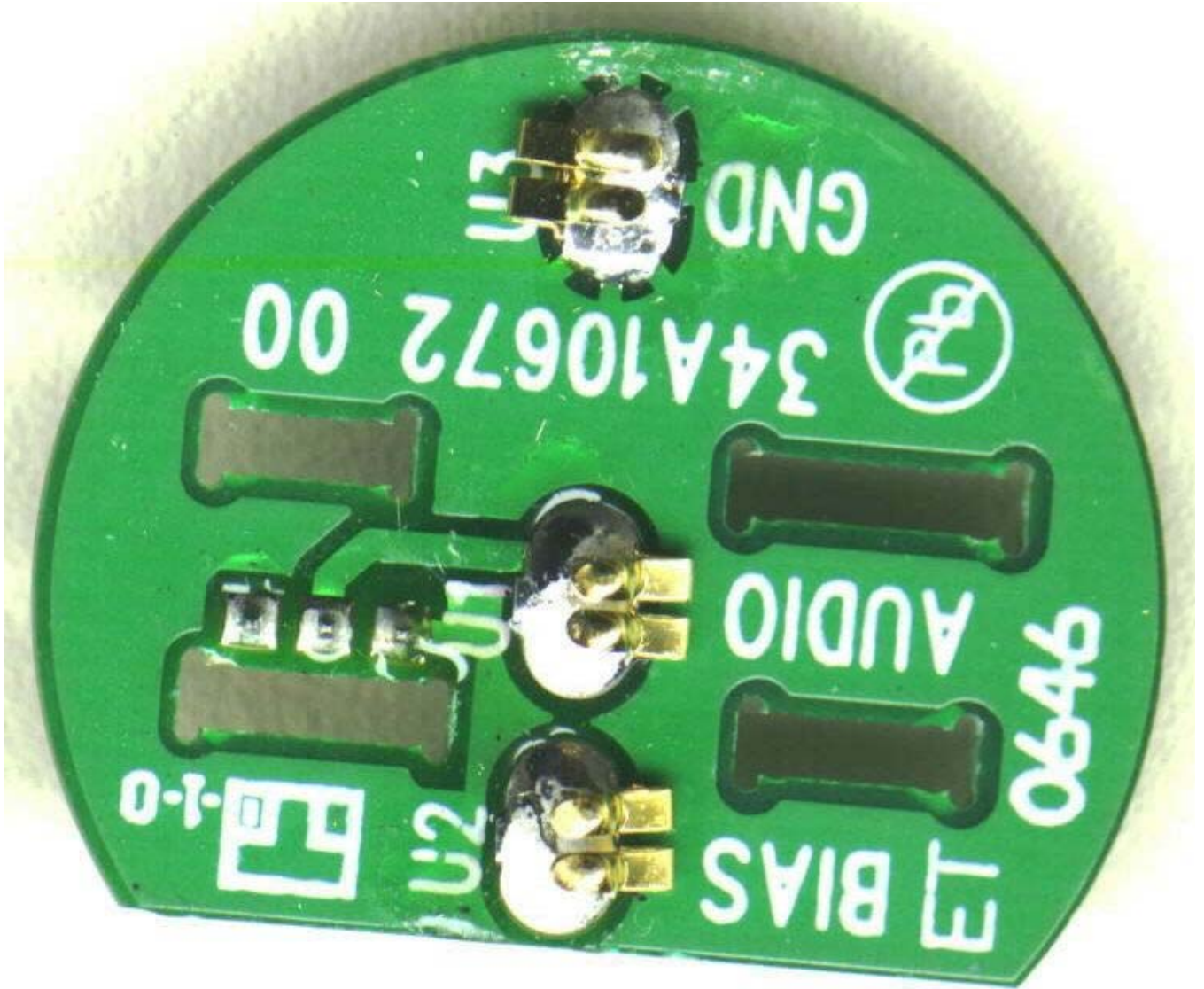


Company: Shure, Inc.

Model: ULX2-G3

Date: 08-06-07

Photo Description: Audio interface board Side 1



Company: Shure, Inc.

Model: ULX2-G3

Date: 08-06-07

Photo Description: Audio interface board Side 2

