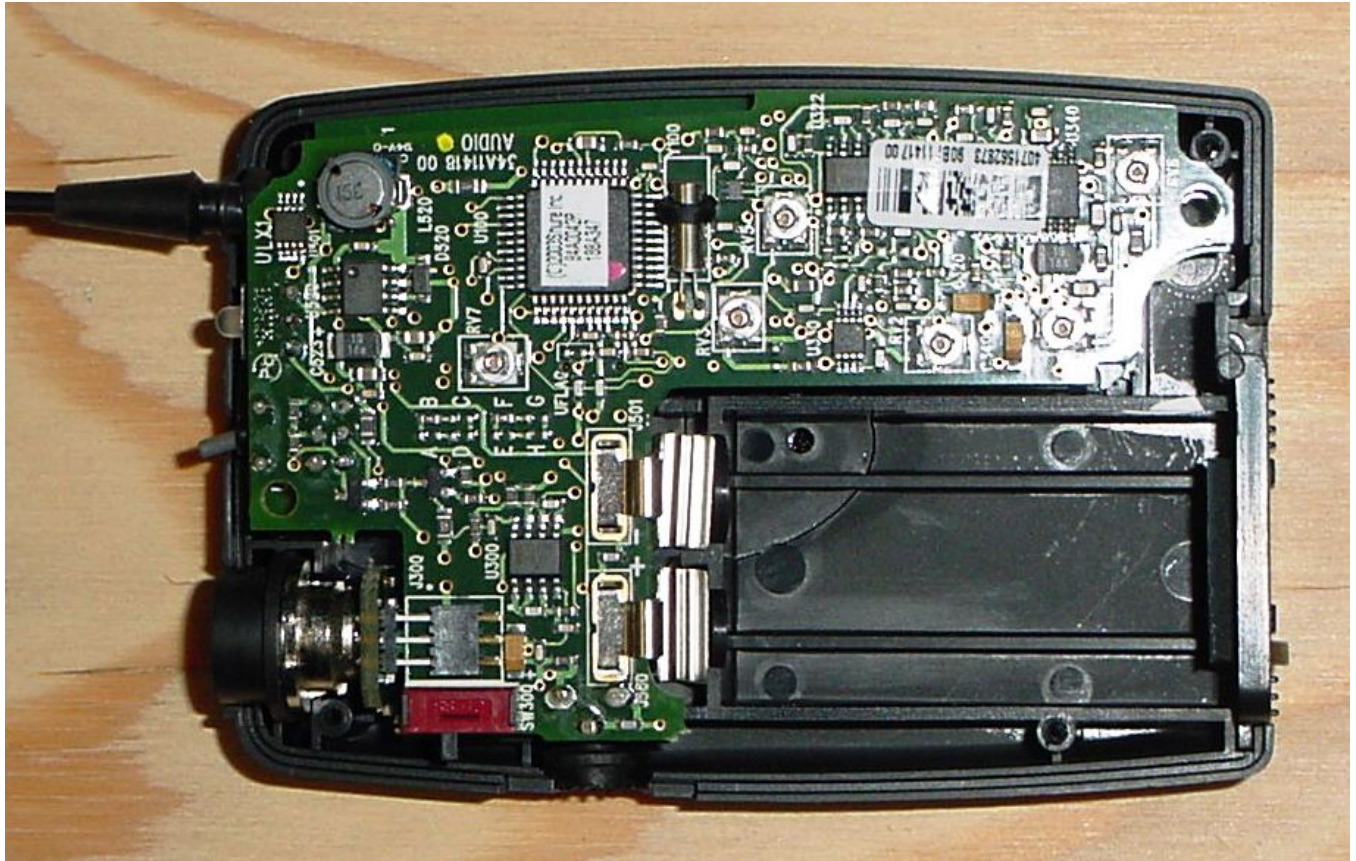


Company: Shure, Inc.
Model: ULX1-G3
FCC ID: DD4ULX1G3
Date: 10-17-07
Photo Description: Back cover removed



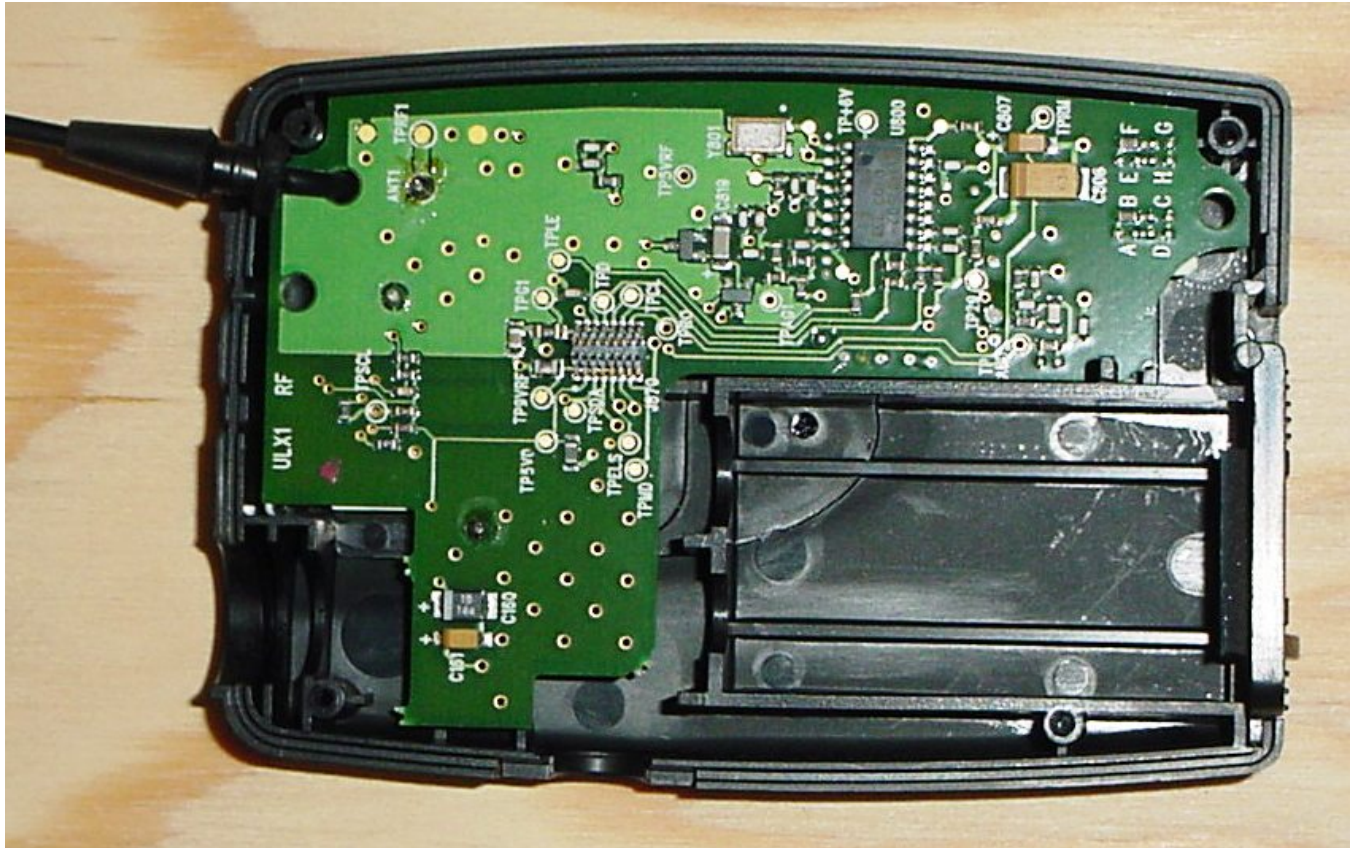
Company: Shure, Inc.

Model: ULX1-G3

FCC ID: DD4ULX1G3

Date: 10-17-07

Photo Description: Audio board removed



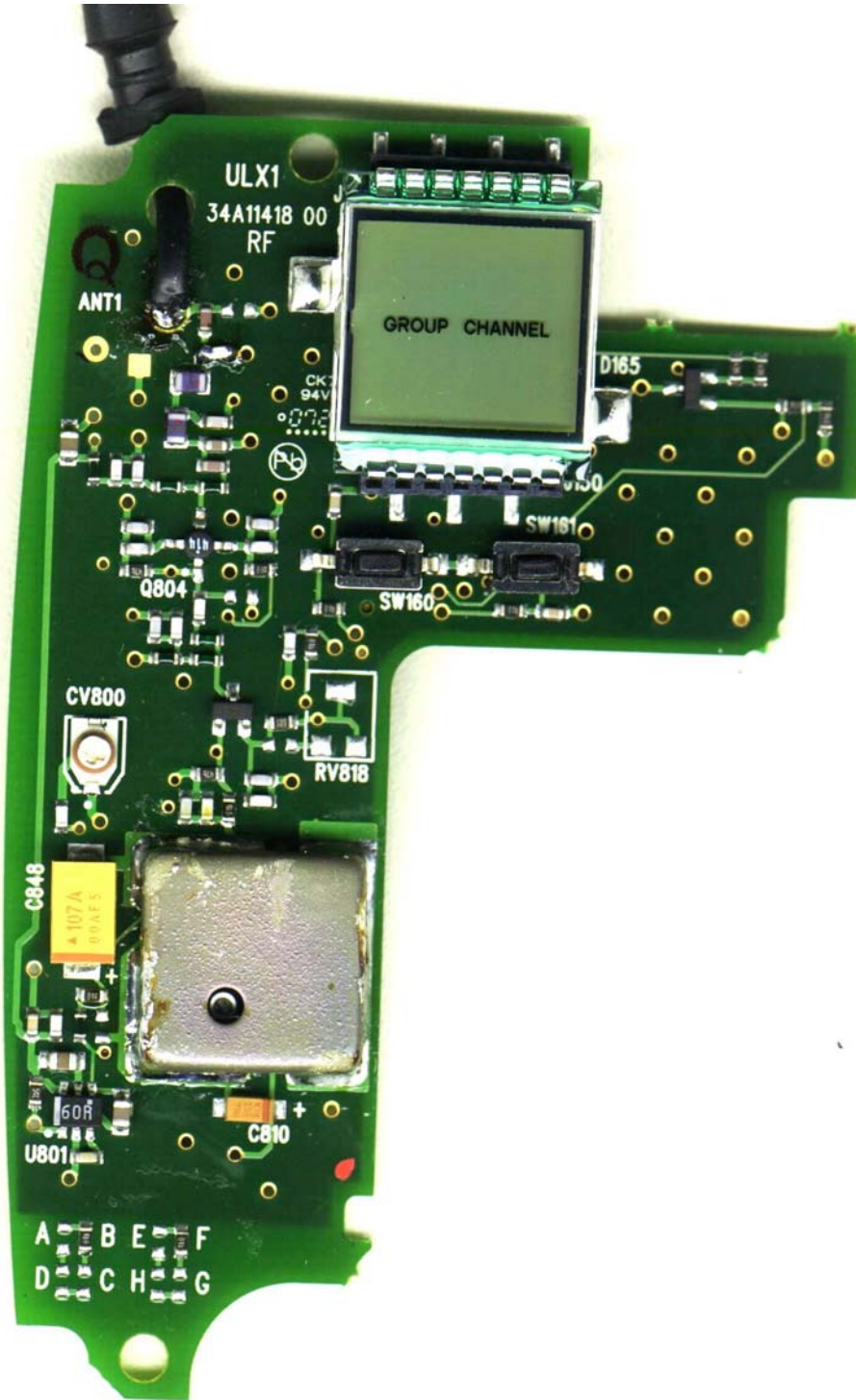
Company: Shure, Inc.

Model: ULX1-G3

FCC ID: DD4ULX1G3

Date: 10-17-07

Photo Description: RF board side 1



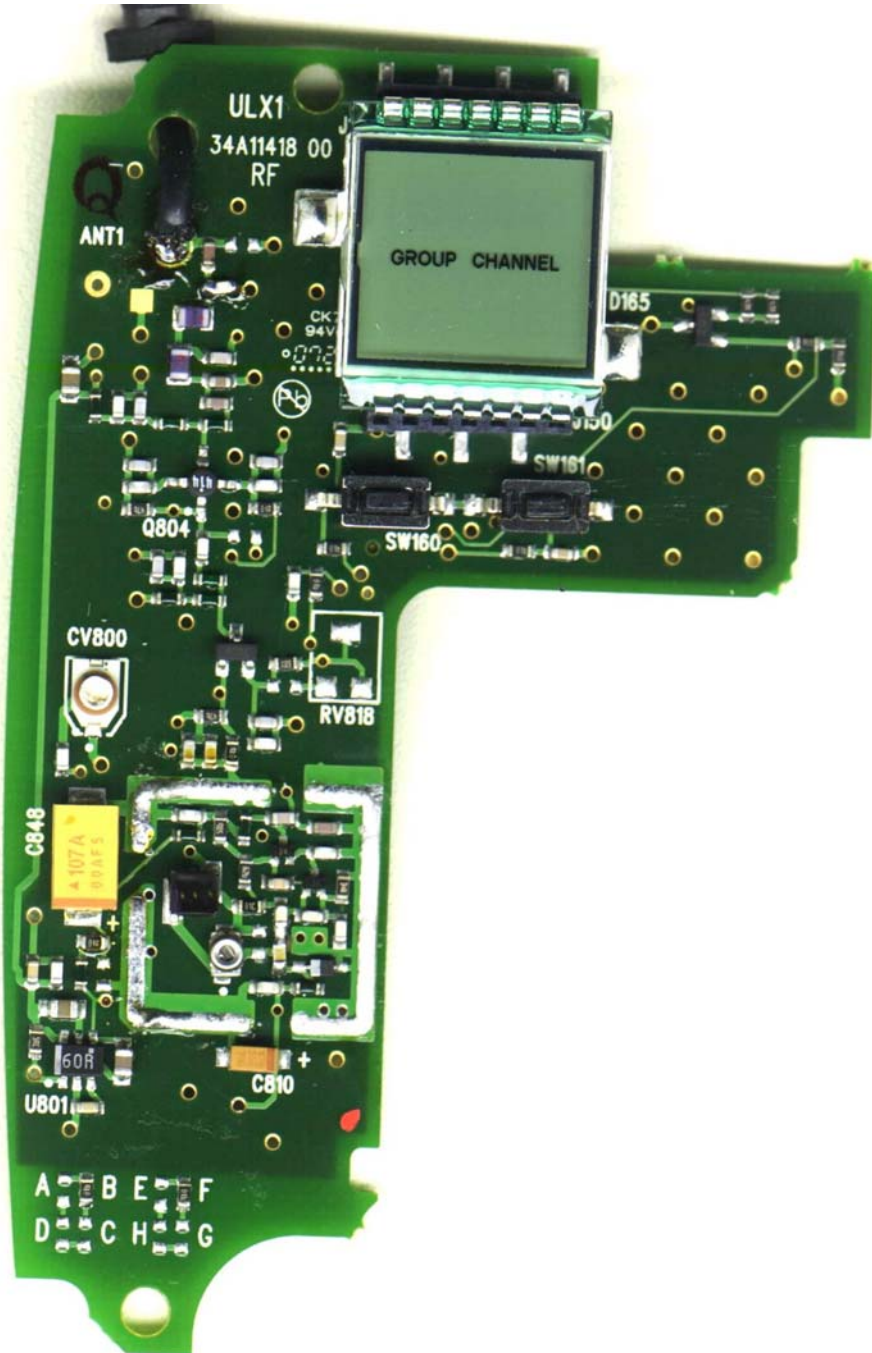
Company: Shure, Inc.

Model: ULX1-G3

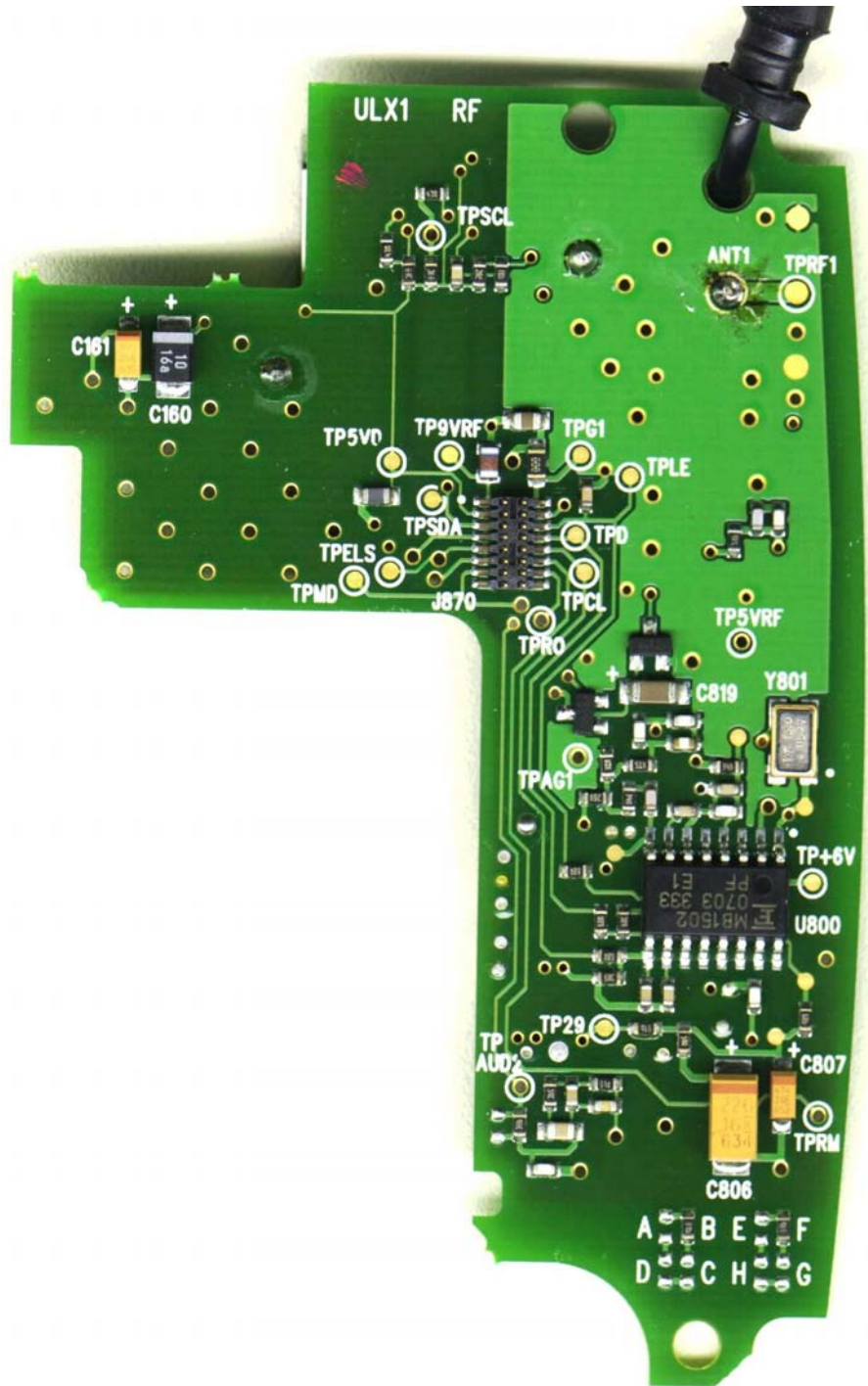
FCC ID: DD4ULX1G3

Date: 10-17-07

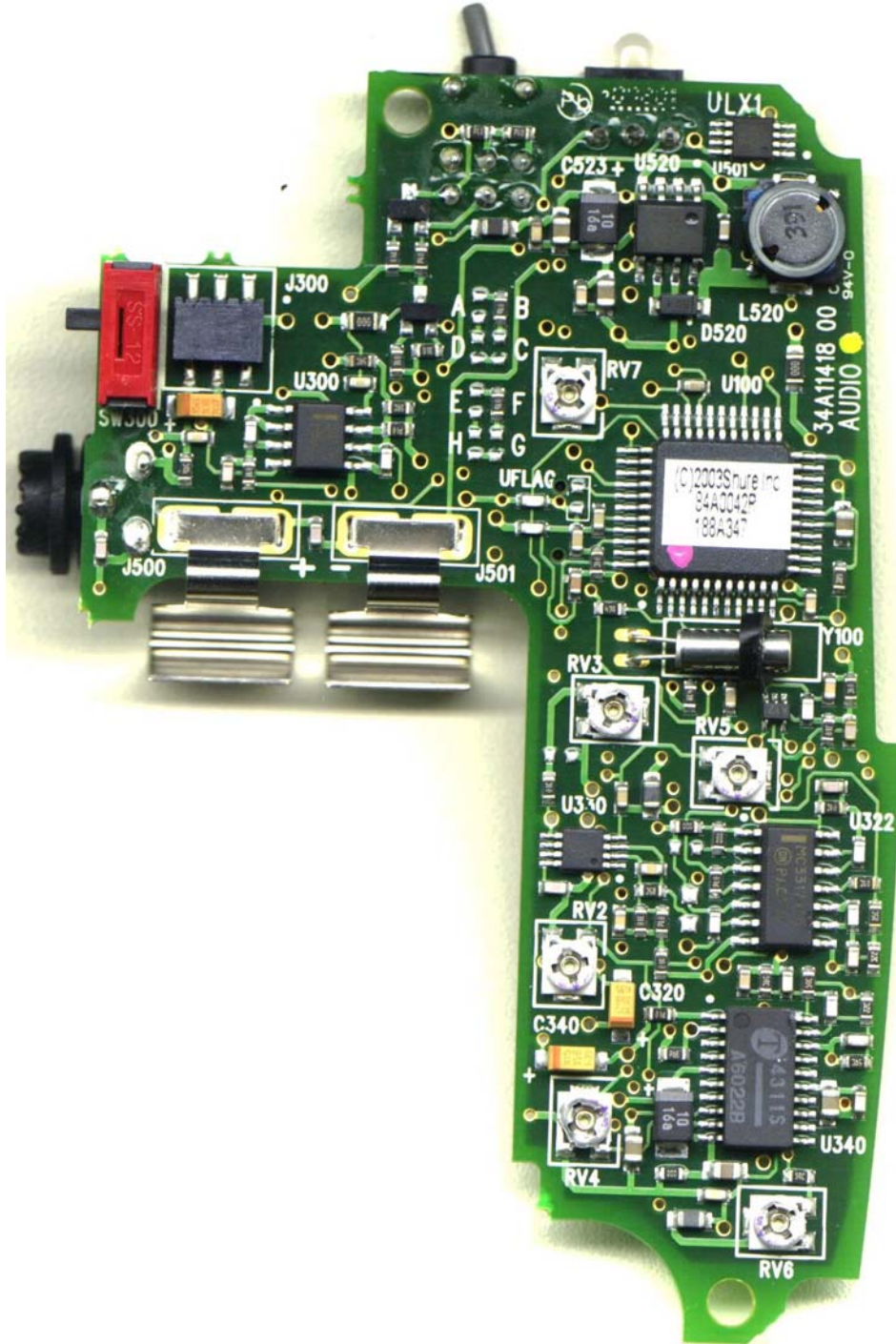
Photo Description: RF board side 1 with shield removed



Company: Shure, Inc.
Model: ULX1-G3
FCC ID: DD4ULX1G3
Date: 10-17-07
Photo Description: RF board side 2



Company: Shure, Inc.
Model: ULX1-G3
FCC ID: DD4ULX1G3
Date: 10-17-07
Photo Description: Audio board side 1



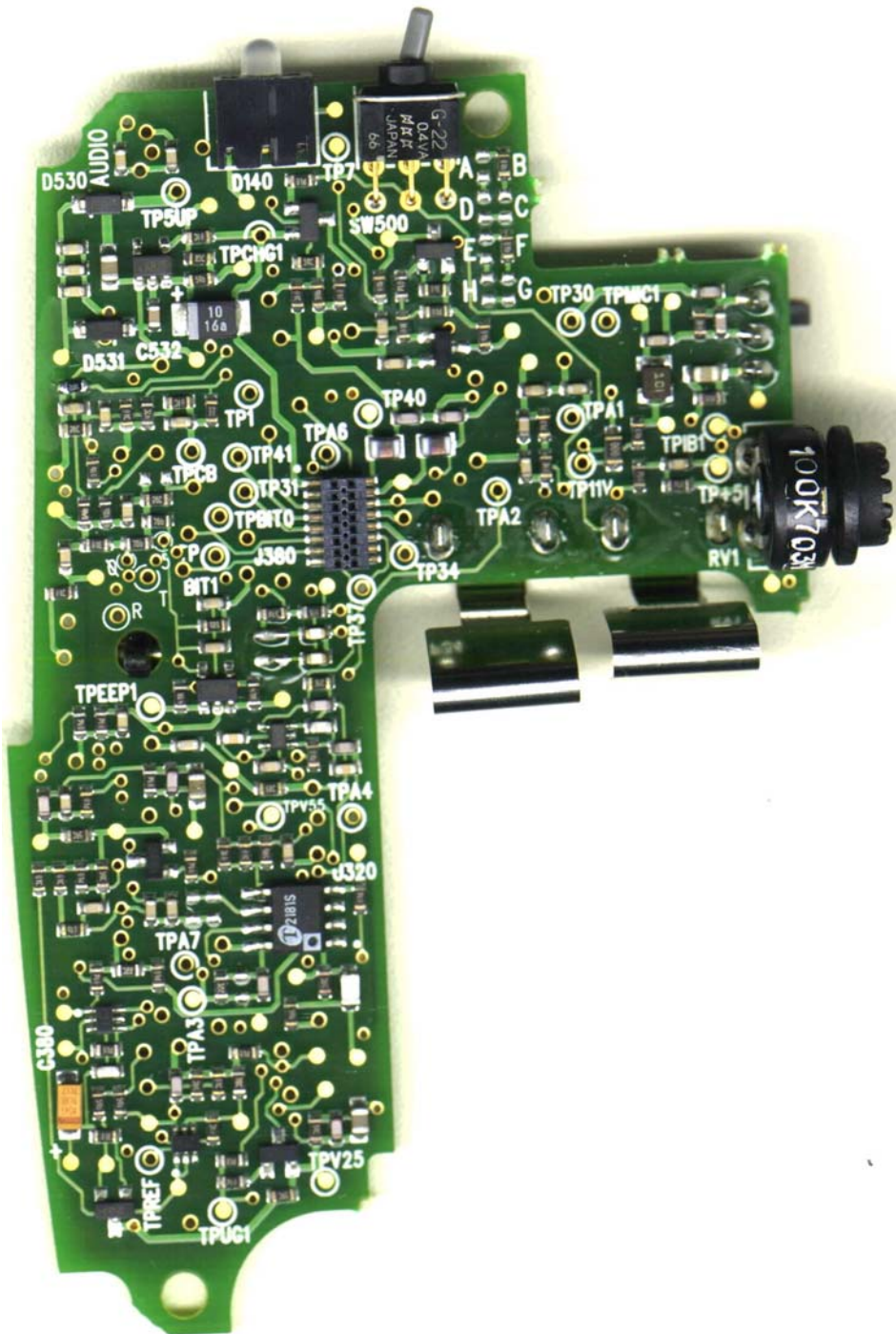
Company: Shure, Inc.

Model: ULX1-G3

FCC ID: DD4ULX1G3

Date: 10-17-07

Photo Description: Audio board side 2



Company: Shure, Inc.
Model: ULX1-G3
FCC ID: DD4ULX1G3
Date: 10-17-07
Photo Description: Audio input board side 1



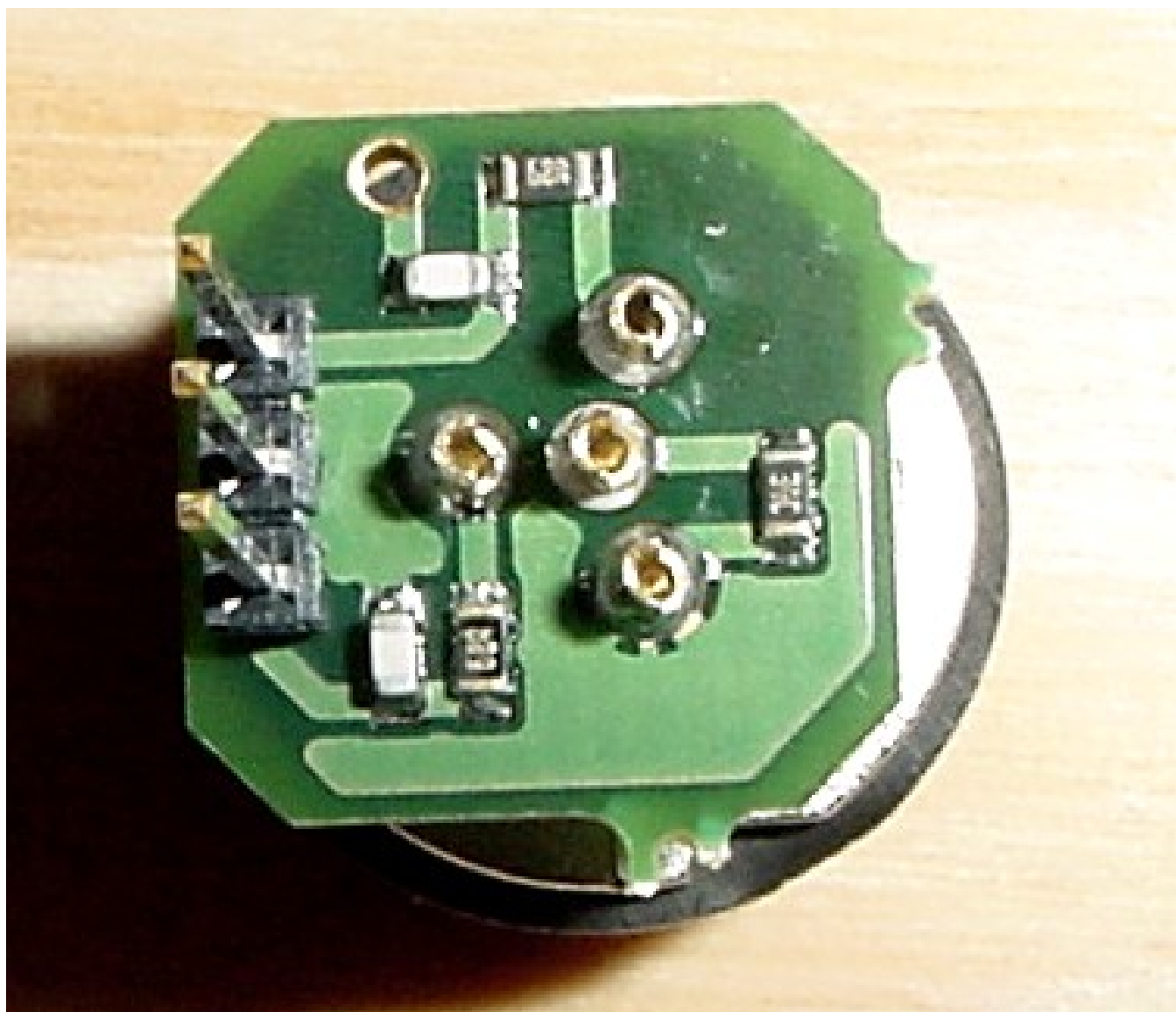
Company: Shure, Inc.

Model: ULX1-G3

FCC ID: DD4ULX1G3

Date: 10-17-07

Photo Description: Audio input board side 2



Company: Shure, Inc.
Model: ULX1-G3
FCC ID: DD4ULX1G3
Date: 10-17-07
Photo Description: Inside covers

