

Soundpiece Removed



Battery Compartment





Battery Compartment Opened

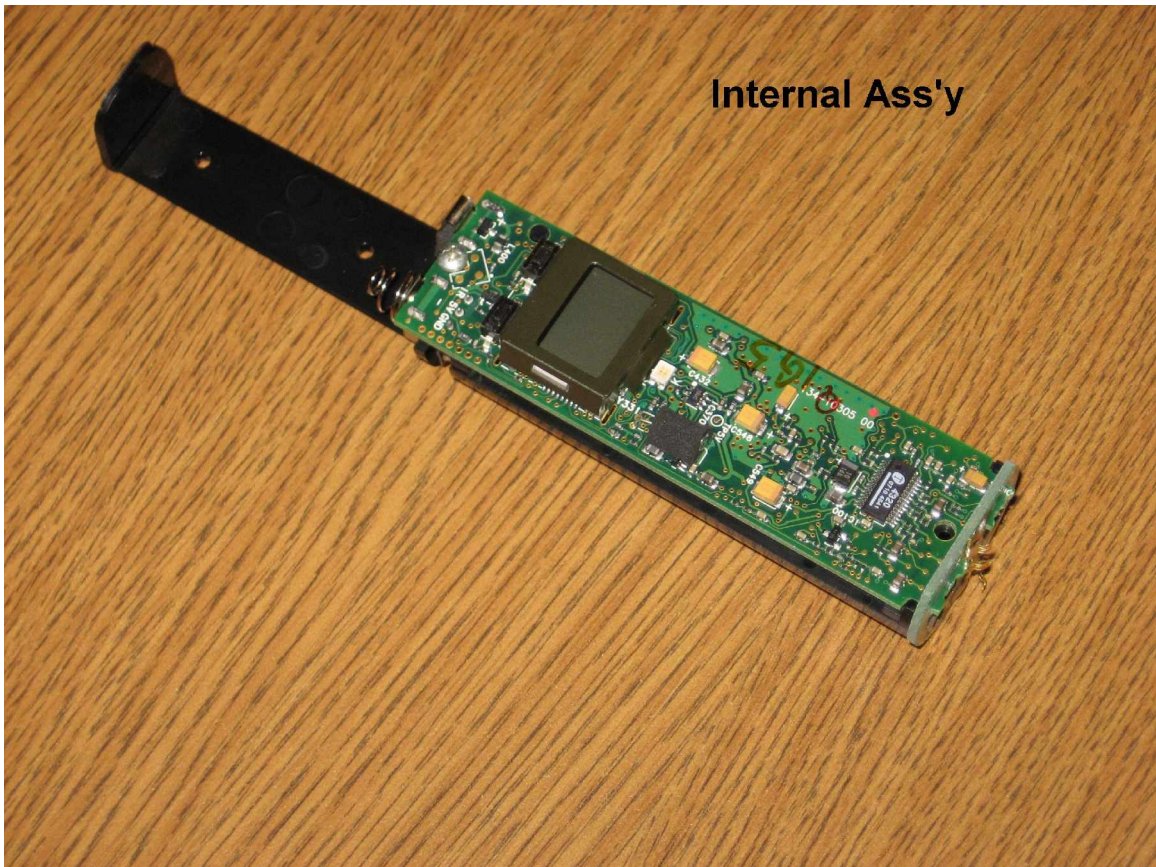


Label Location

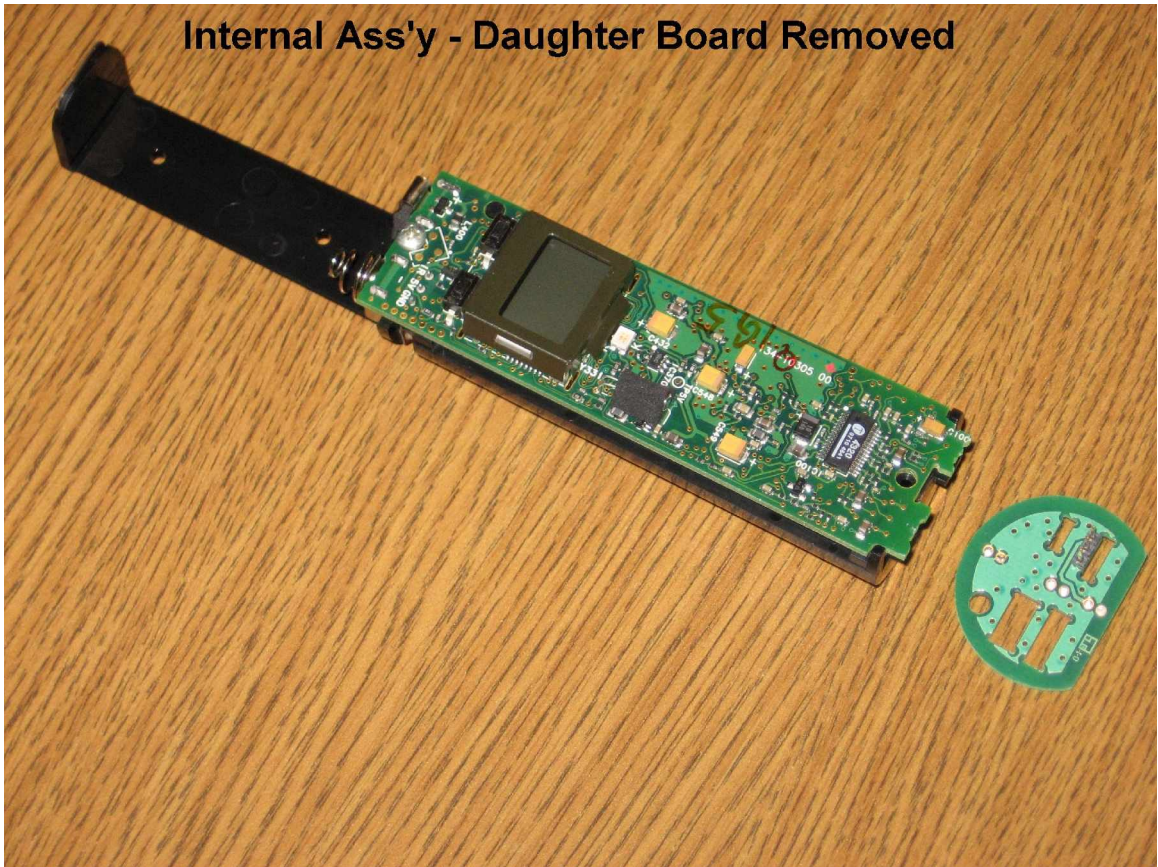
Label



Internal Ass'y



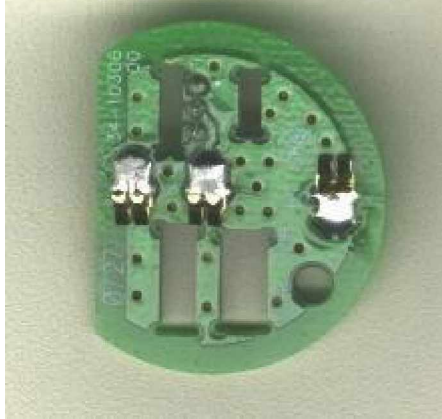
Internal Ass'y - Daughter Board Removed



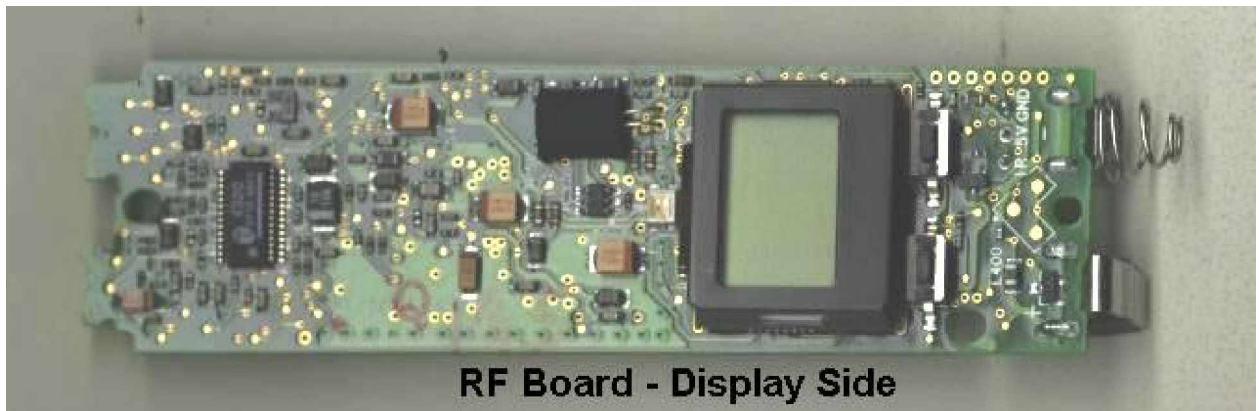
Bottom of Internal Ass'y 



Daughter Board - Side A



Daughter Board - Side B



RF Board - Display Side



RF Board Bottom Side - Shield Cover Removed

