

Company: Shure, Inc.

Model: PGX2-X1

Date: 11-27-07

Photo Description: **Sound piece removed**



Company: Shure, Inc.
Model: PGX2-X1
Date: 11-27-07
Photo Description: Internal assembly removed



Company: Shure, Inc.

Model: PGX2-X1

Date: 11-27-07

Photo Description: **Back of internal assembly**

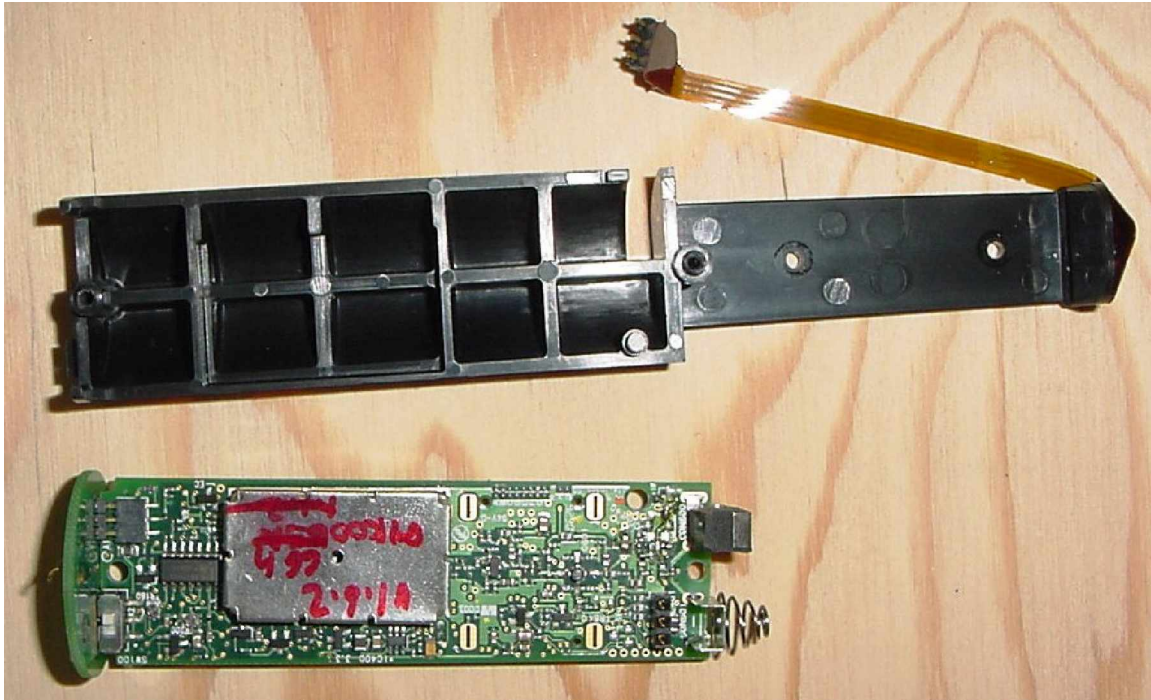


Company: Shure, Inc.

Model: PGX2-X1

Date: 11-27-07

Photo Description: Internal assembly with circuit board removed



Company: Shure, Inc.

Model: PGX2-X1

Date: 11-27-07

Photo Description: Circuit board side 1

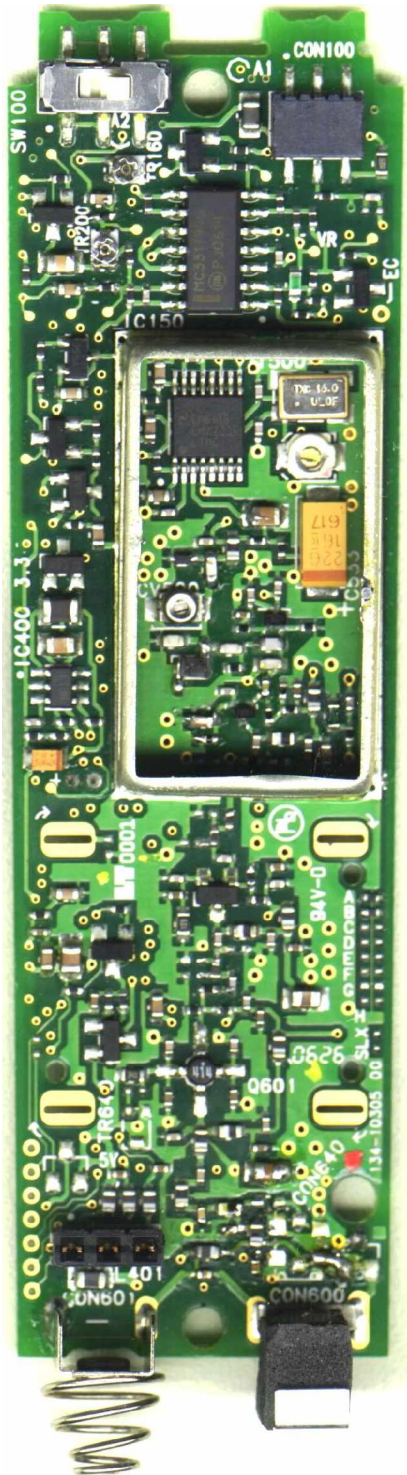


Company: Shure, Inc.

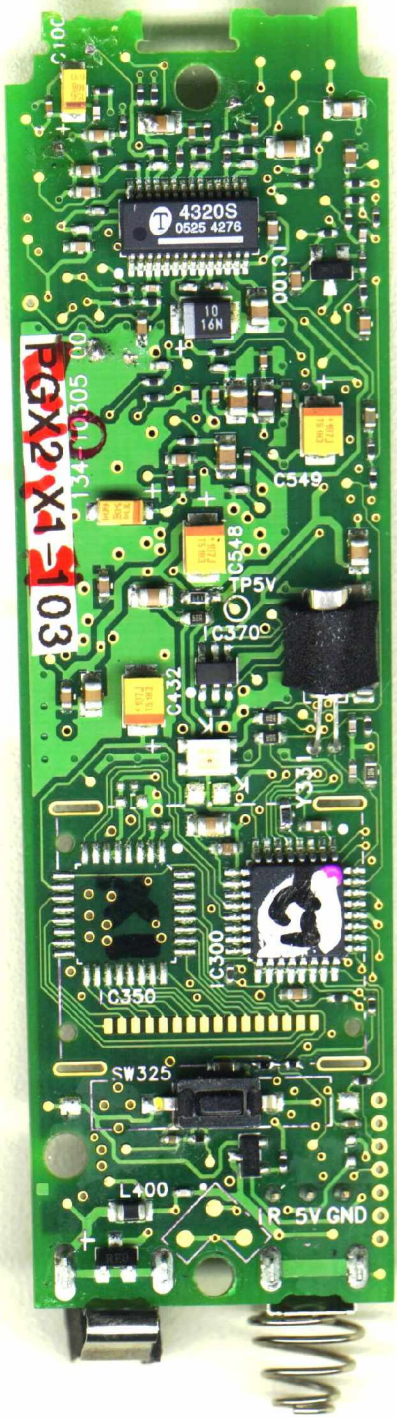
Model: PGX2-X1

Date: 11-27-07

Photo Description: Circuit board side 1 with shield removed



Company: Shure, Inc.
Model: PGX2-X1
Date: 11-27-07
Photo Description: **Circuit board side 2**



Company: Shure, Inc.

Model: PGX2-X1

Date: 11-27-07

Photo Description: **Daughter board side 1**



Company: Shure, Inc.

Model: PGX2-X1

Date: 11-27-07

Photo Description: **Daughter board side 2**

