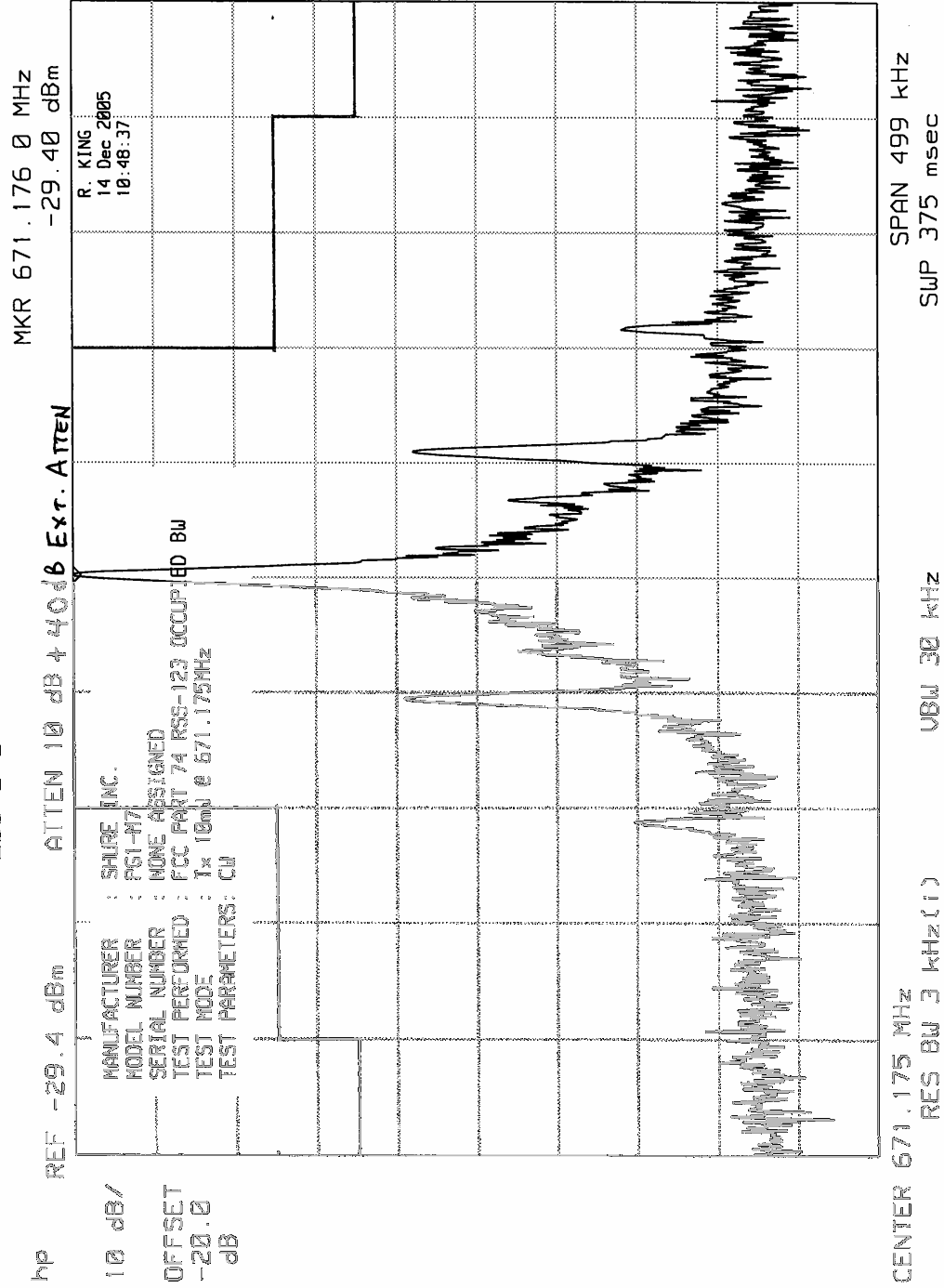
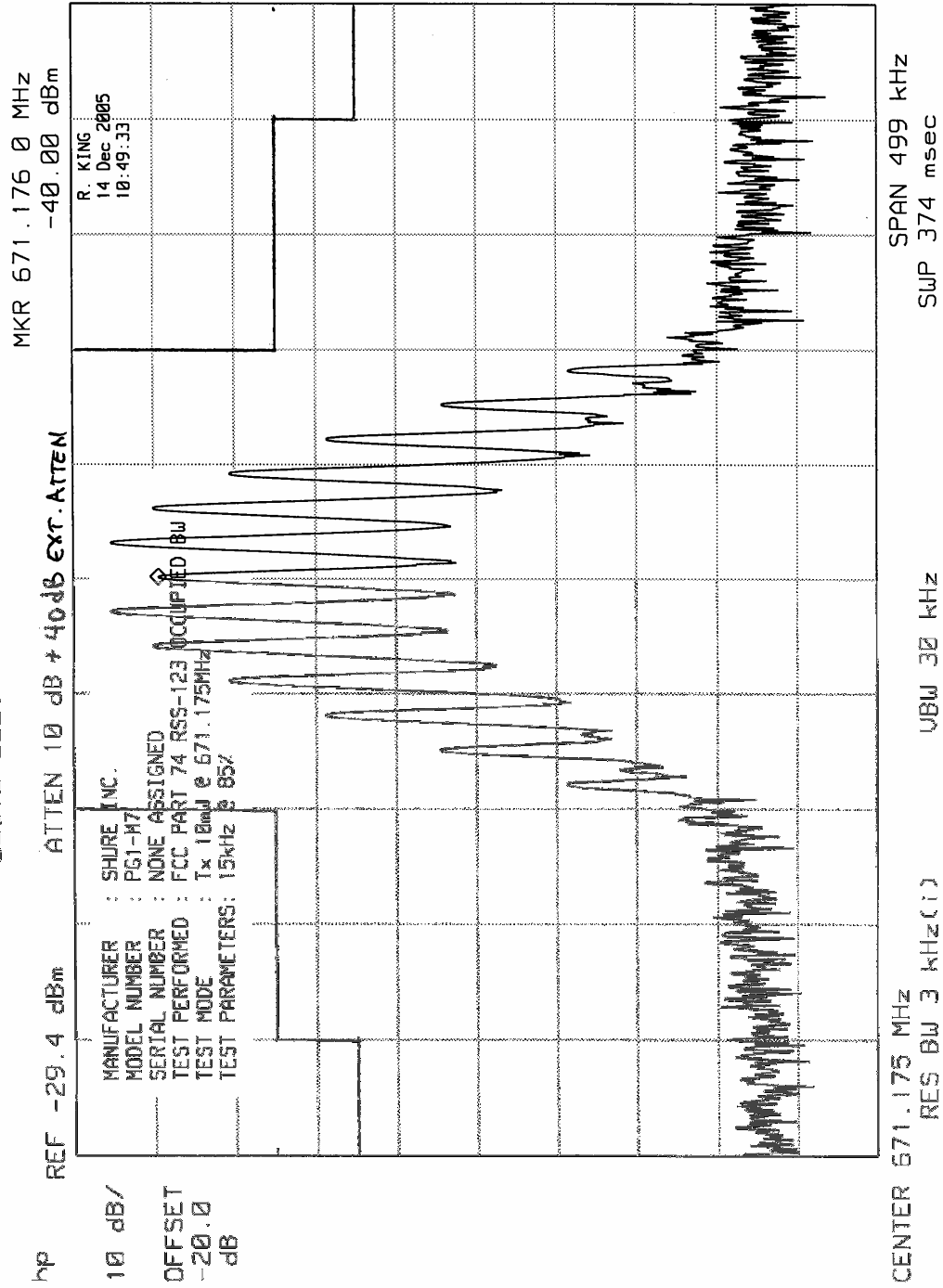


ELITE ELECTRONIC ENGINEERING INC.



ELITE ELECTRONIC ENGINEERING INC.



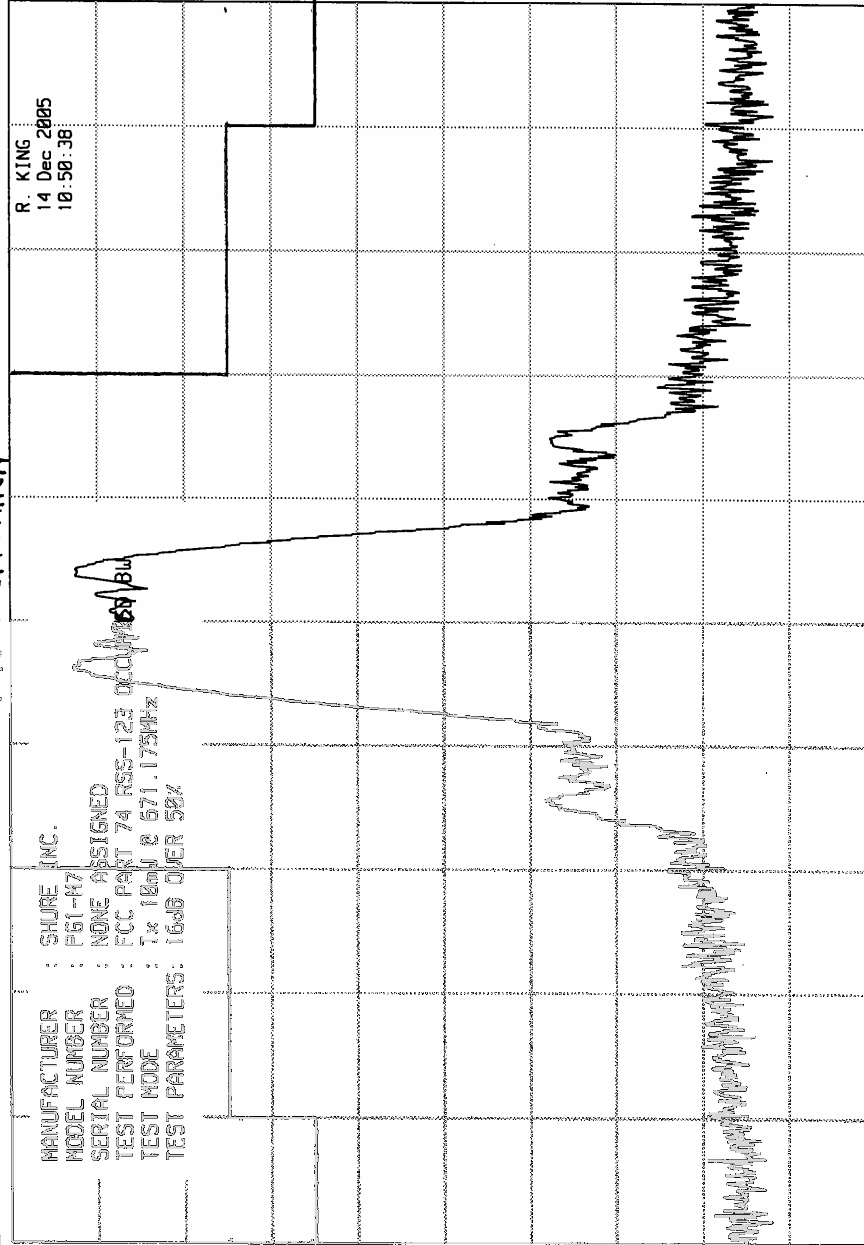


ELITE ELECTRONIC ENGINEERING INC.

MKR 671.176 0 MHz
-42.70 dBm

REF -29.4 dBm
ATTEN 10 dB +40dB EXT.ATTEN

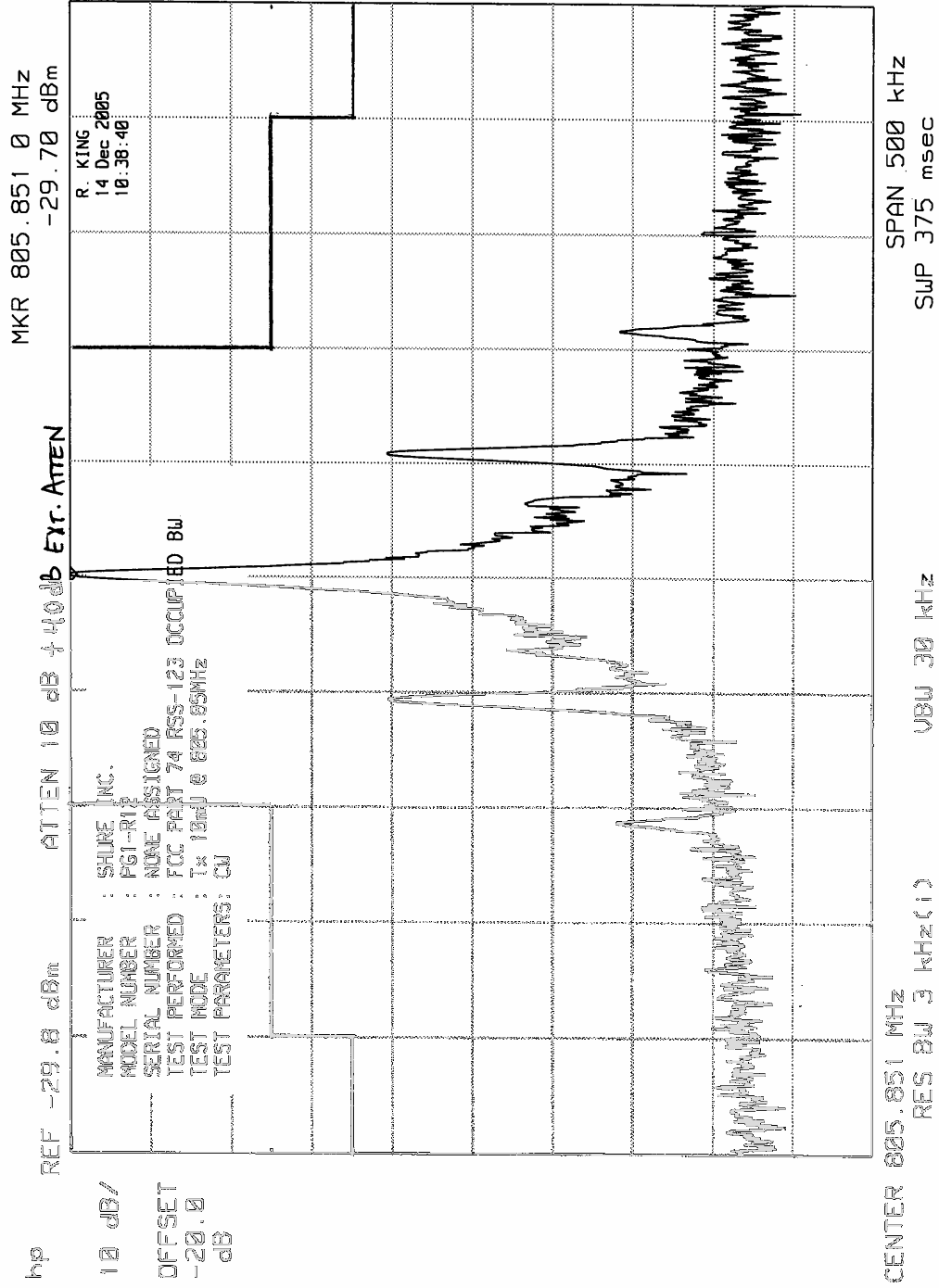
10 dB/
OFFSET
-20.0
dB



CENTER 671.175 MHz
RES BW 3 kHz (1)
SPAN 499 kHz
SWP 374 msec
VBW 30 kHz

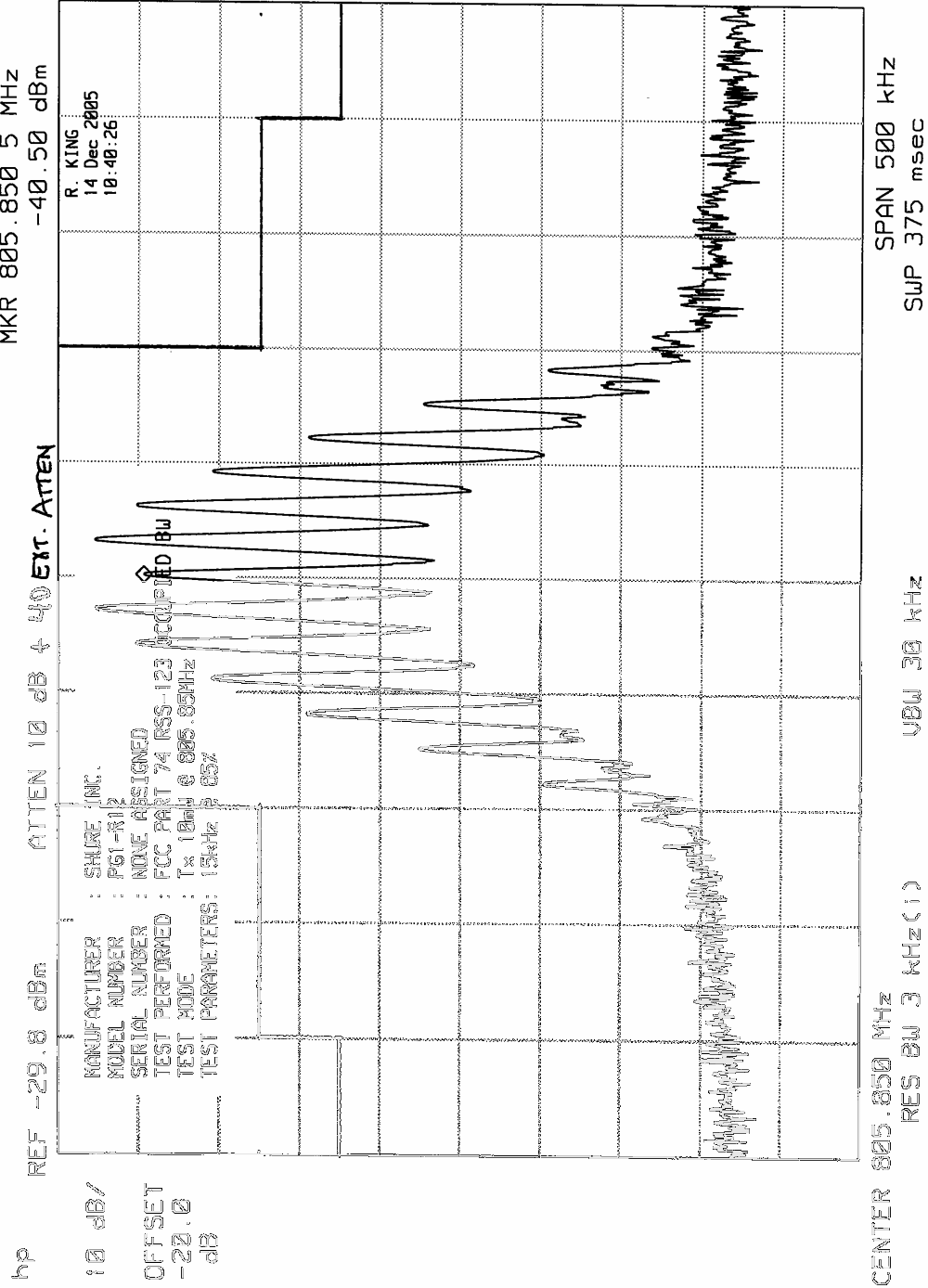


ELITE ELECTRONIC ENGINEERING Inc.

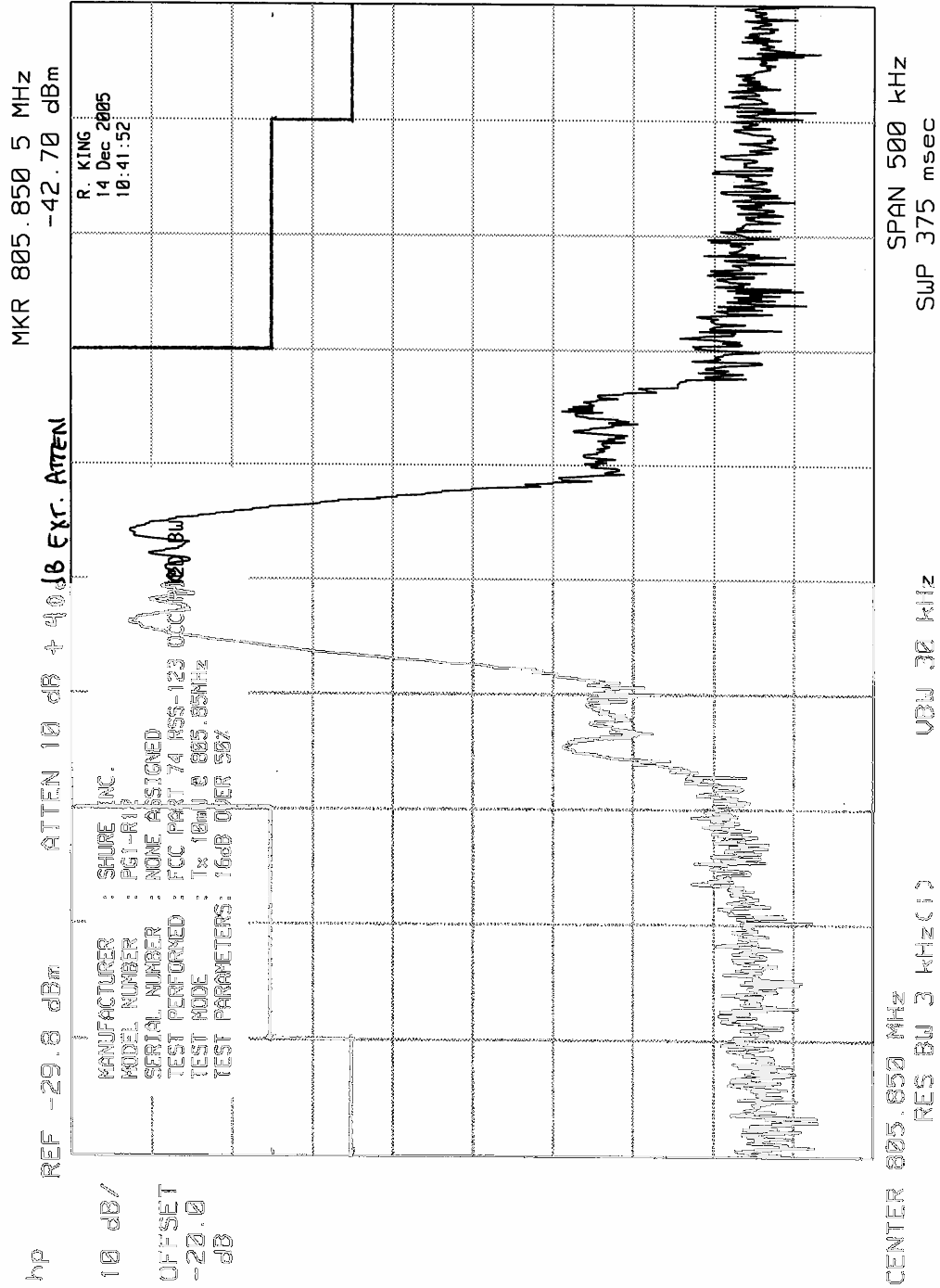


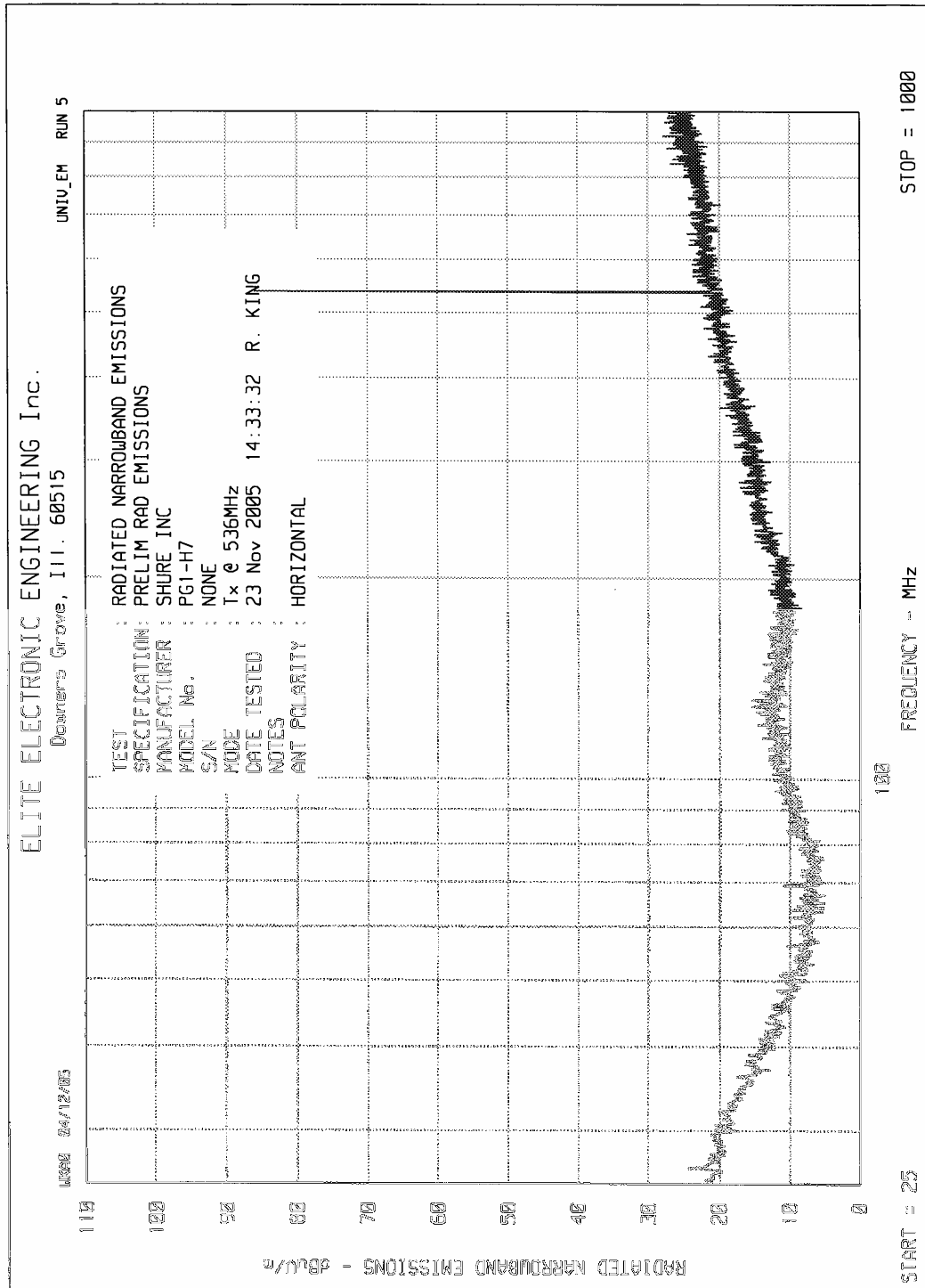
ELITE ELECTRONIC ENGINEERING Inc.

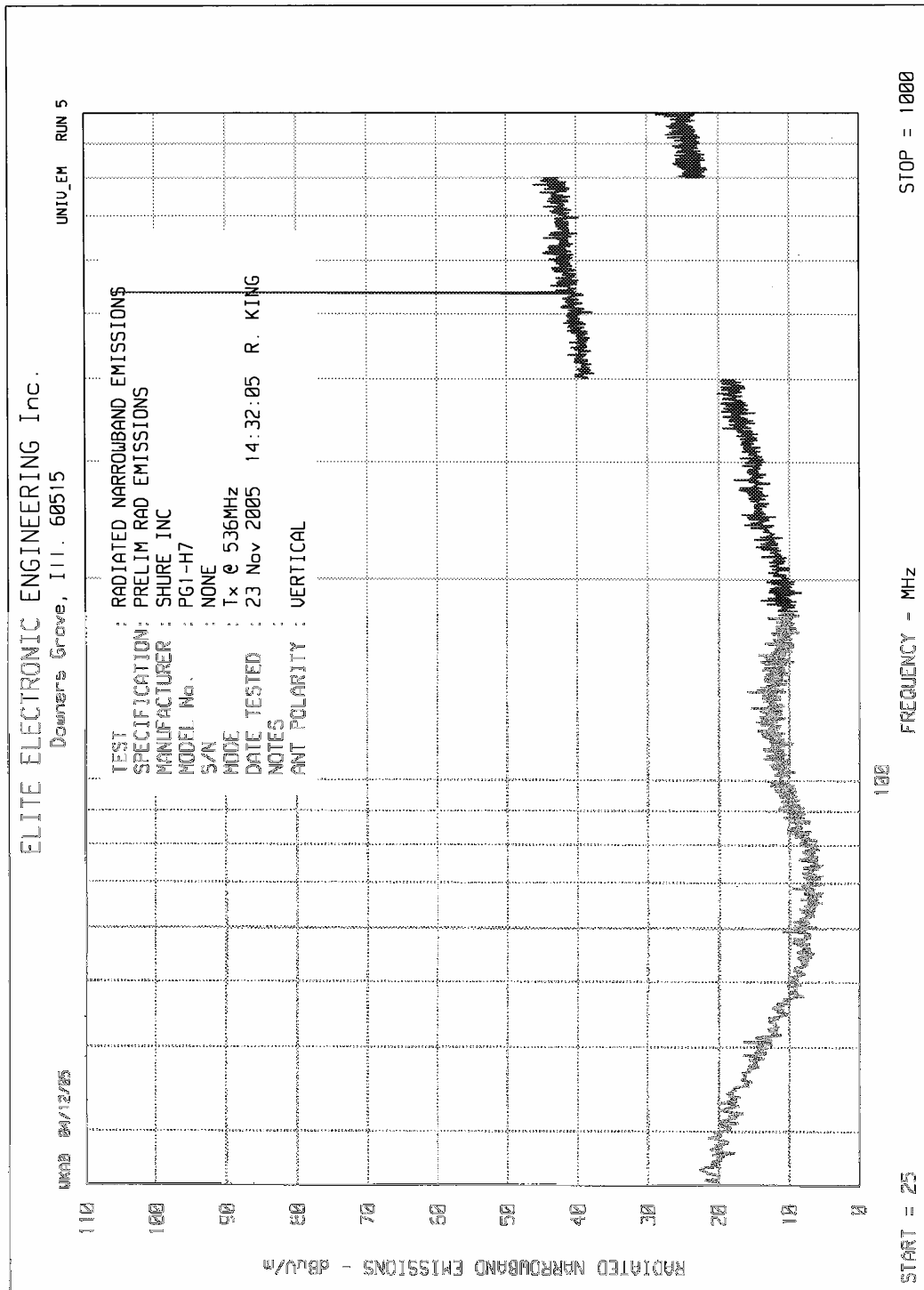
MR 805.850 5 MHz
-40.50 dBm

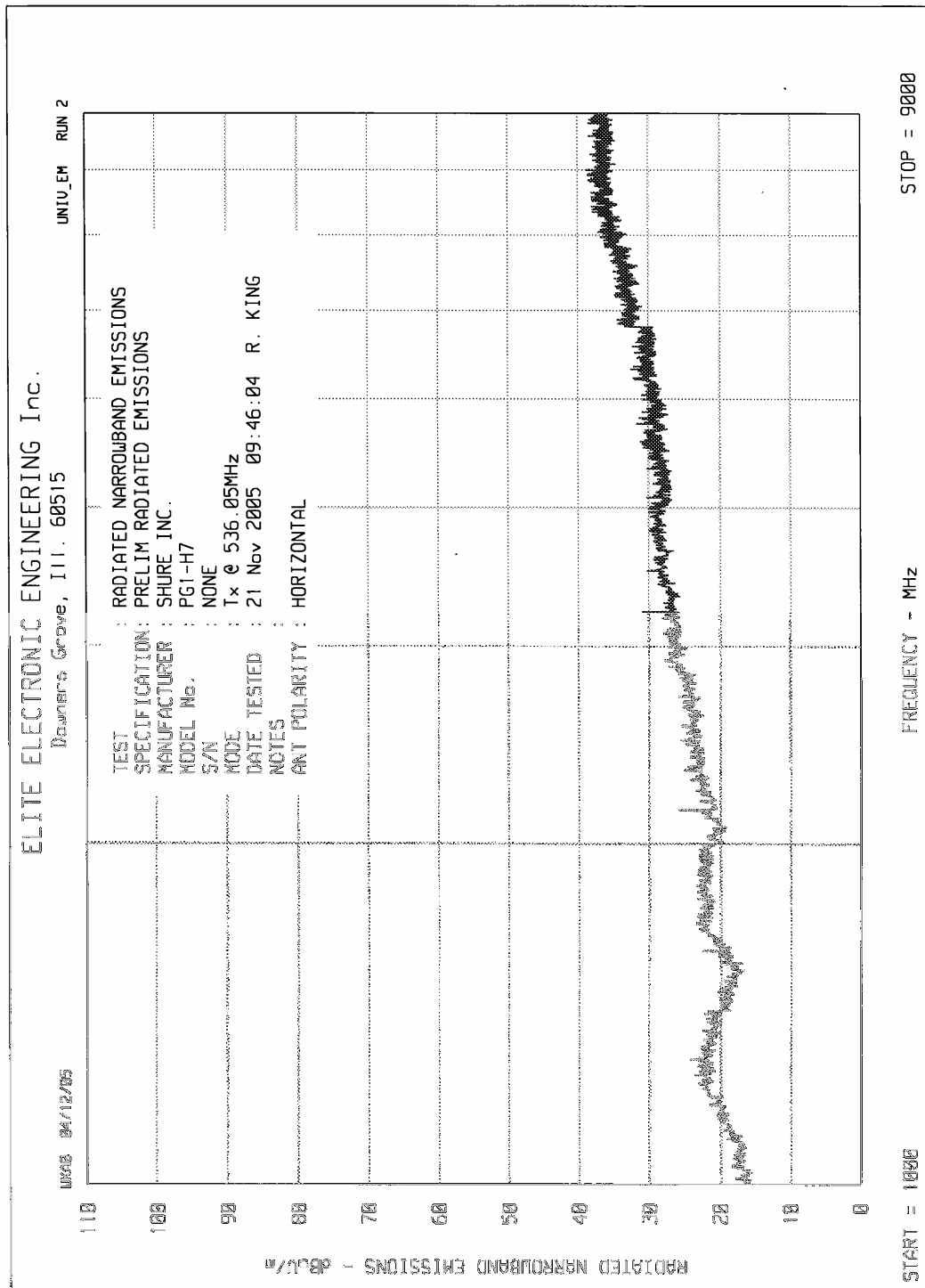


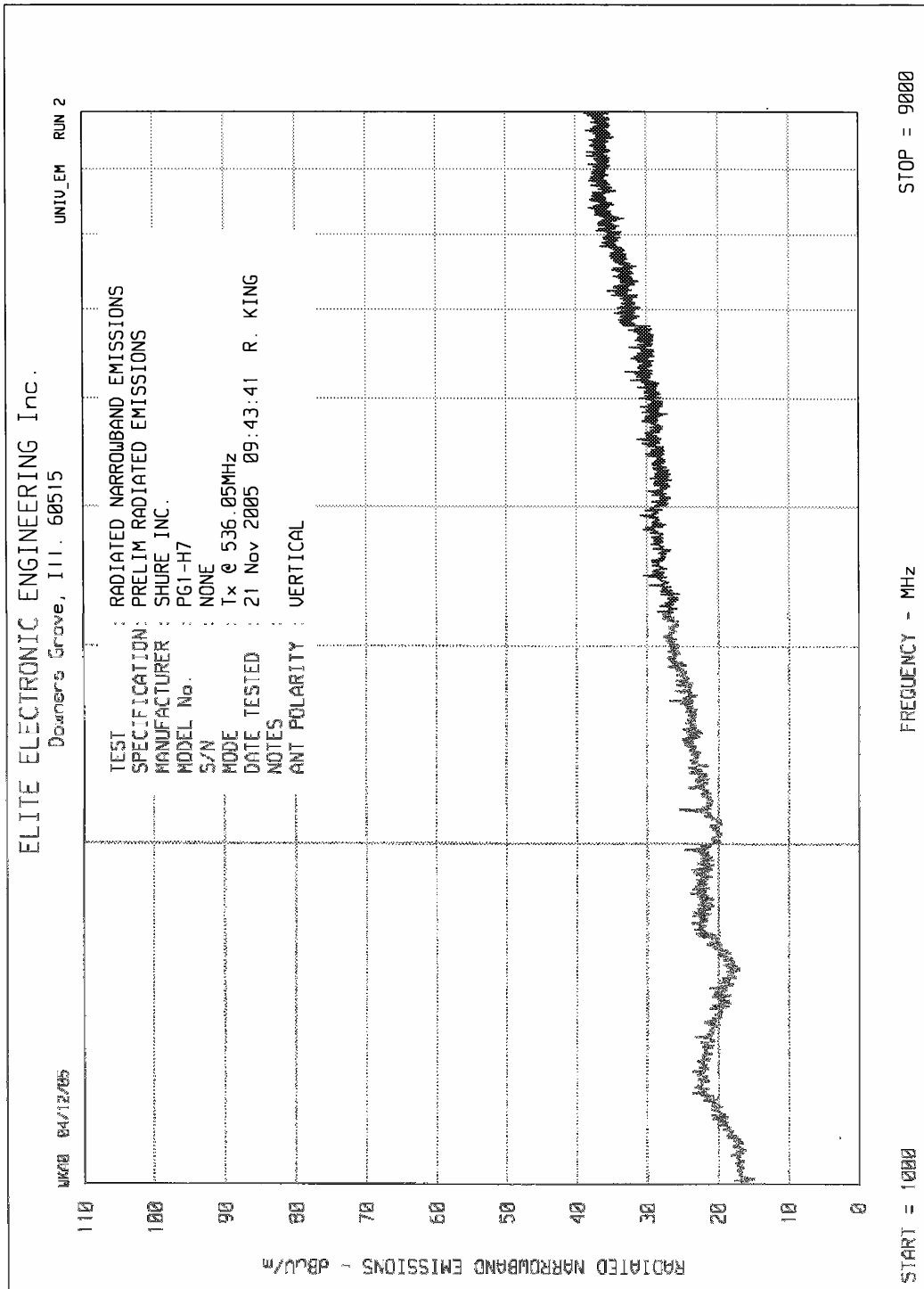
ELITE ELECTRONIC ENGINEERING Inc.

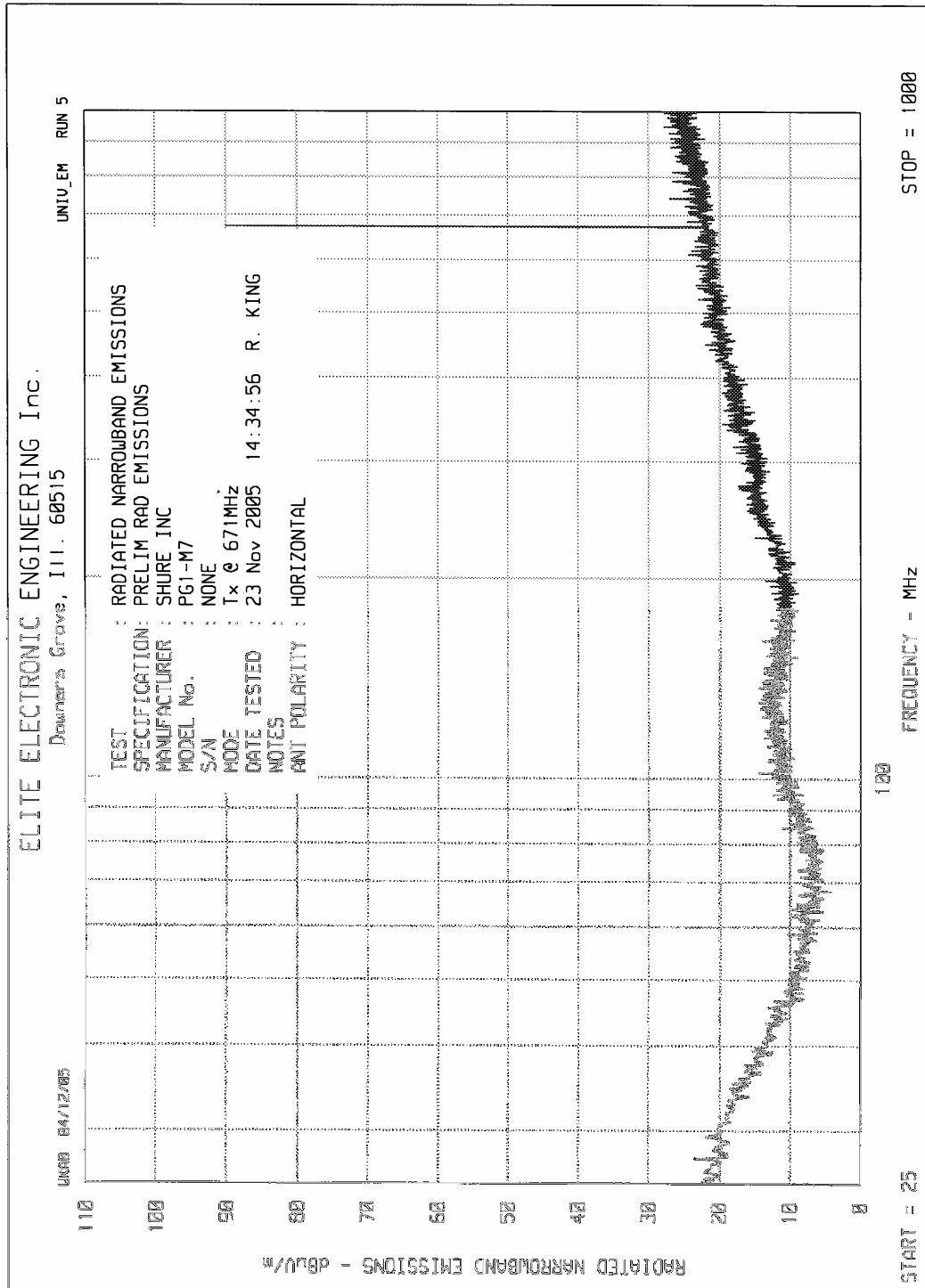


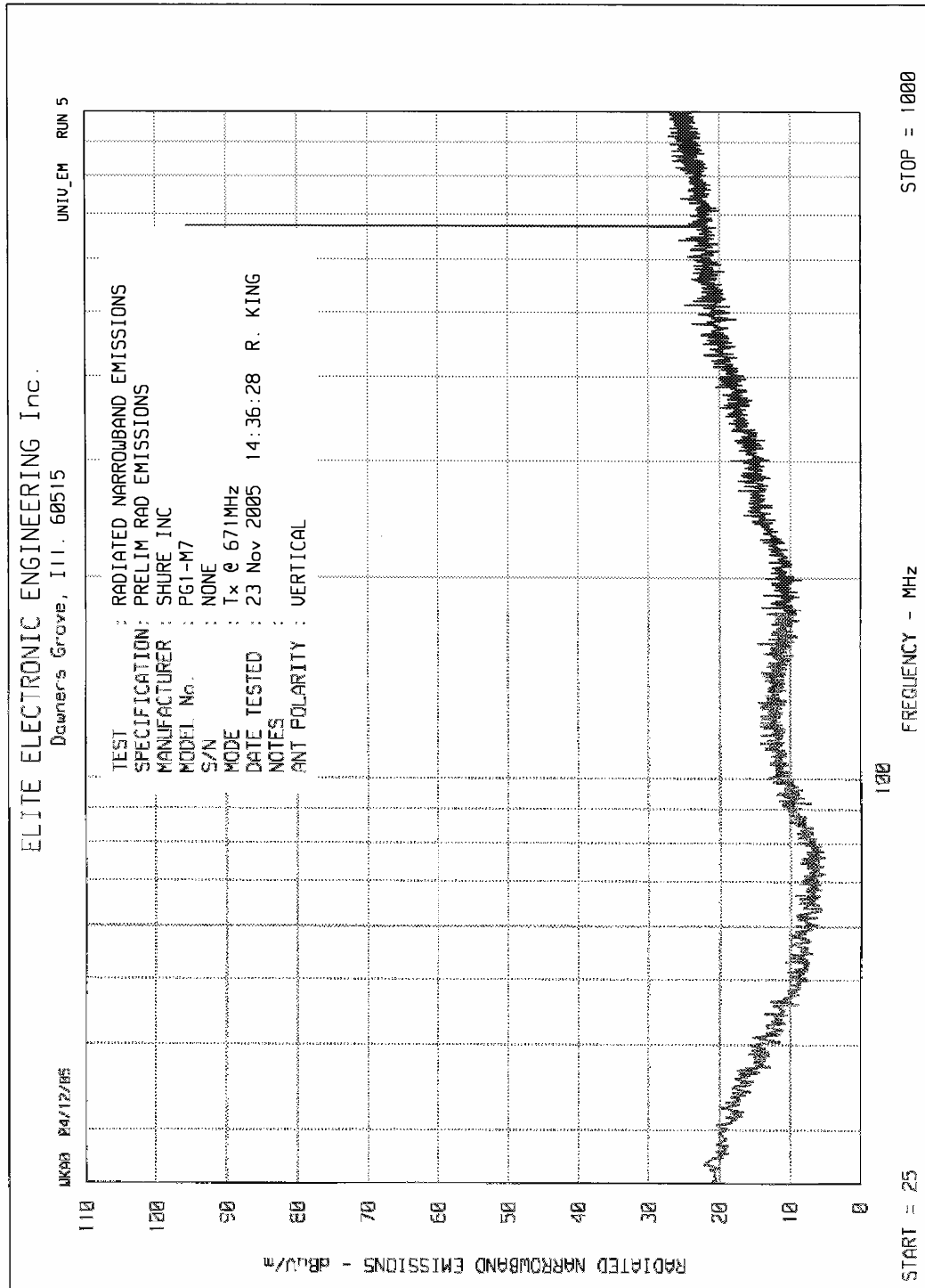


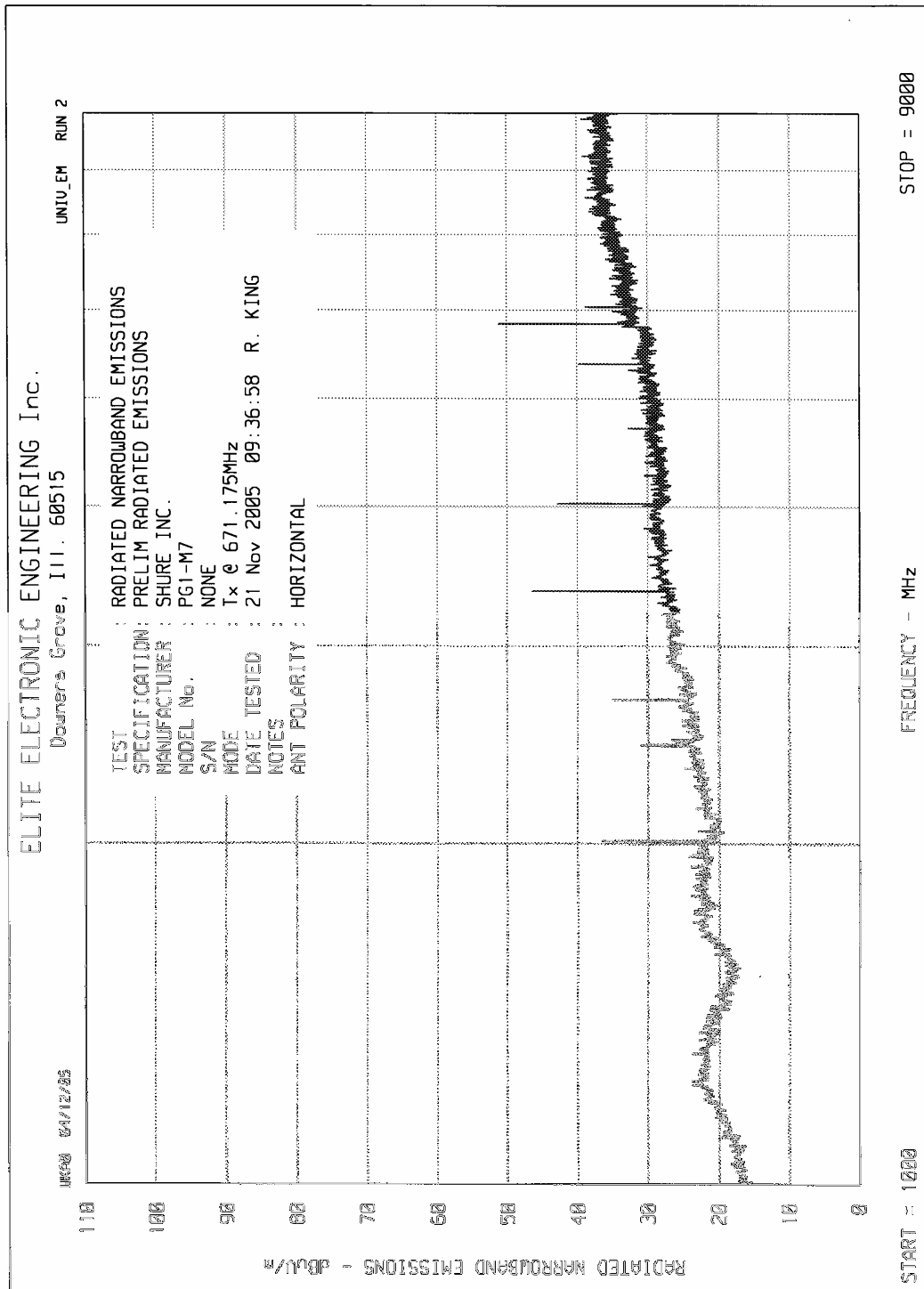


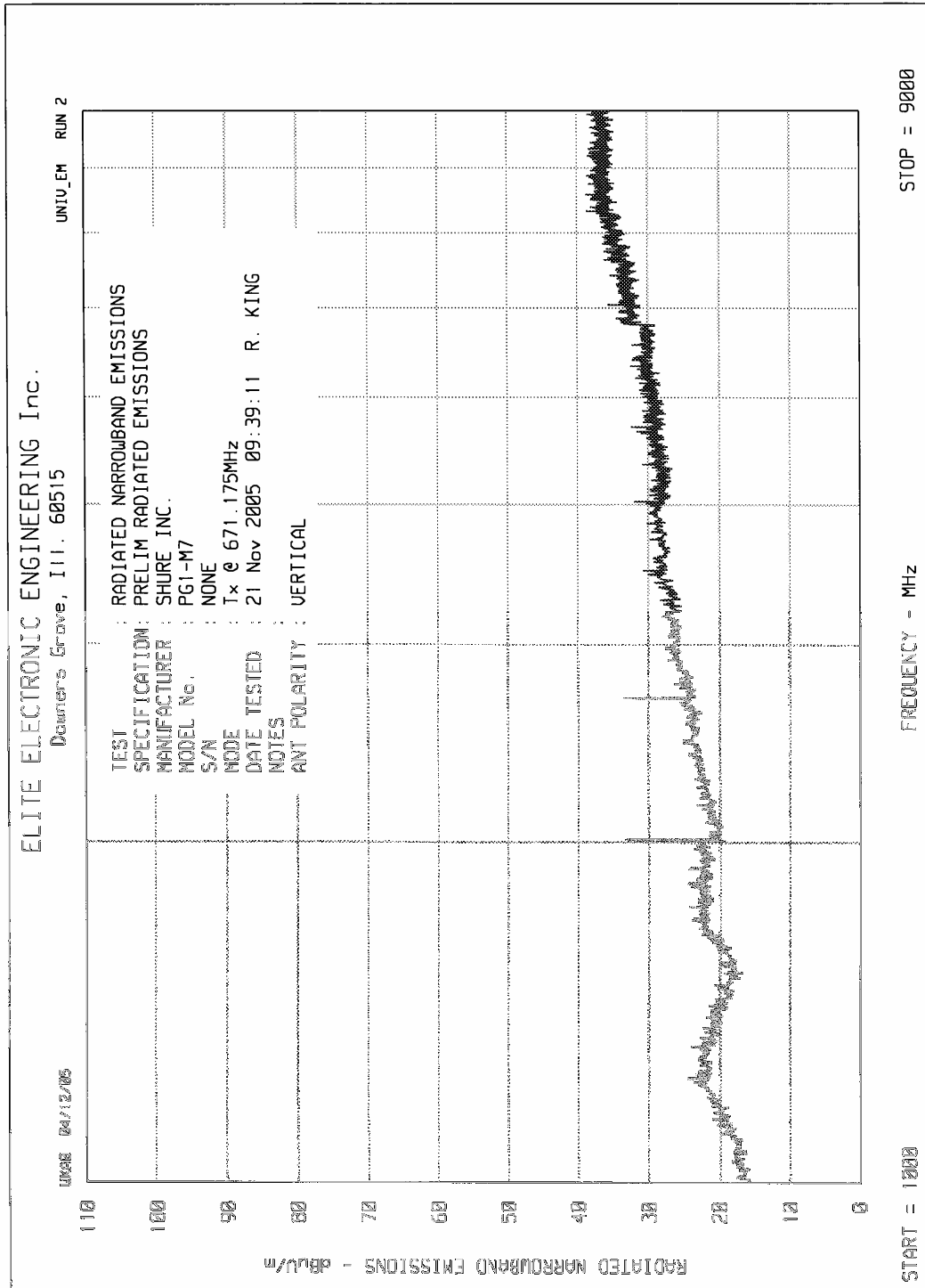


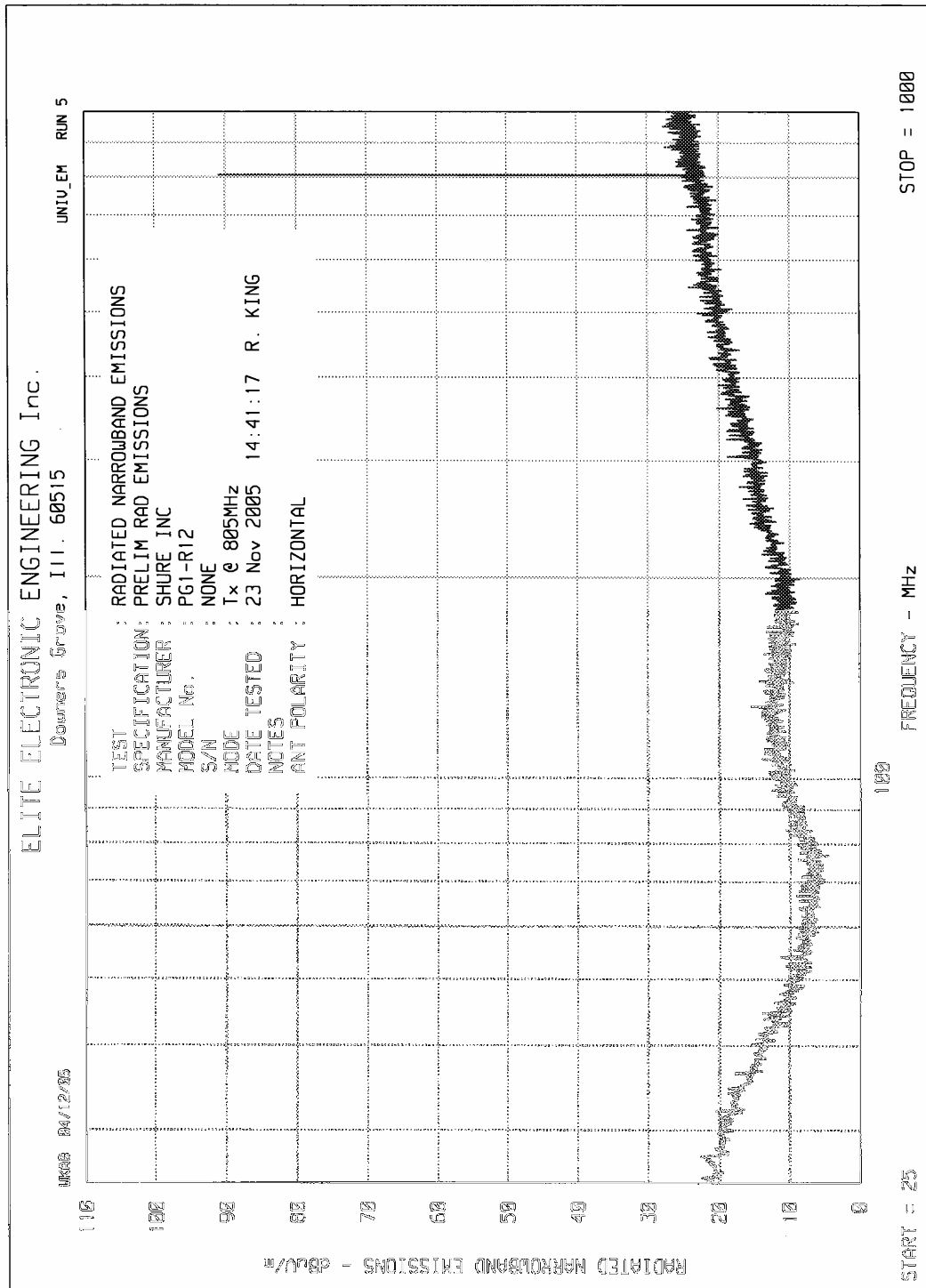


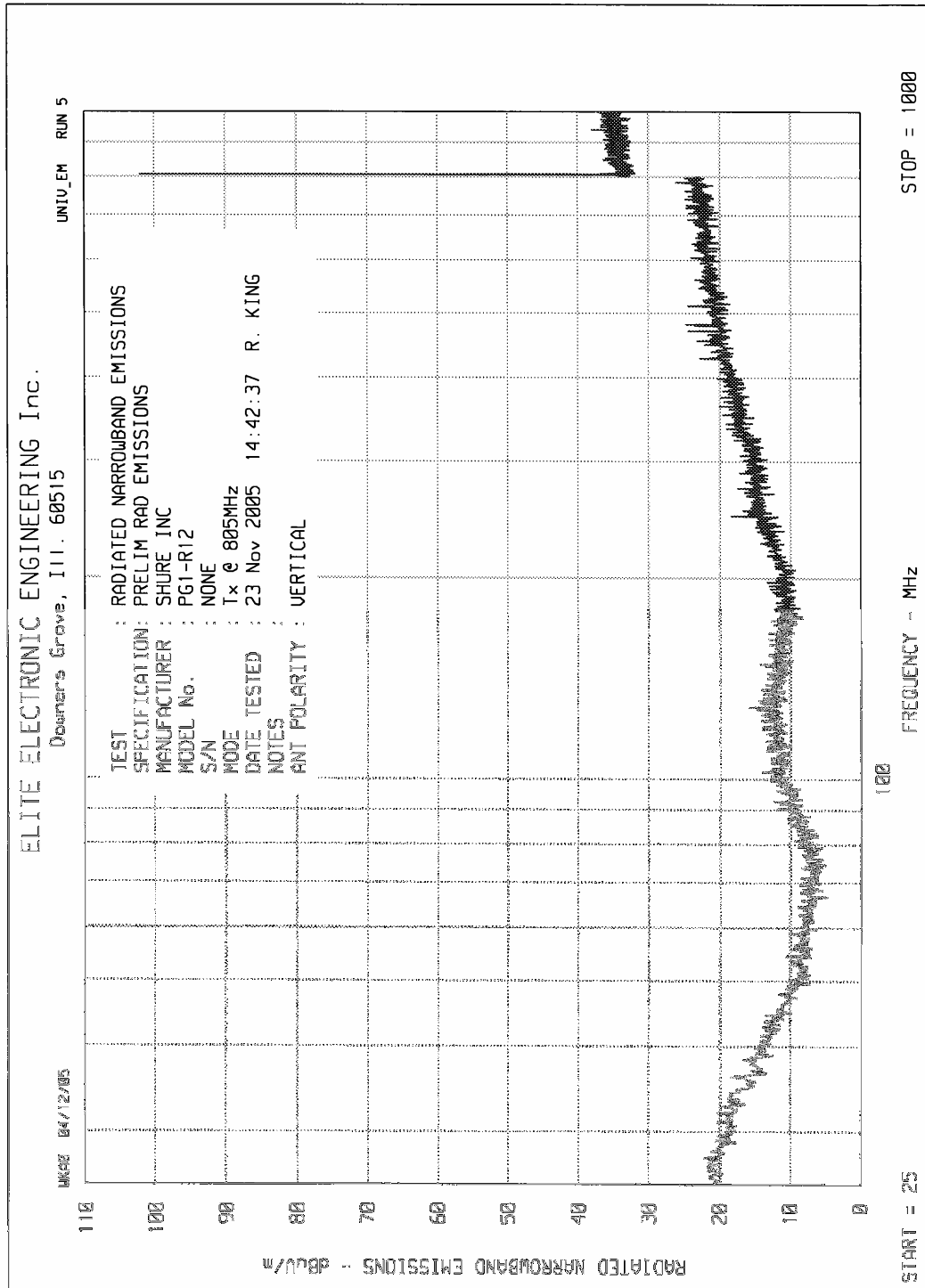


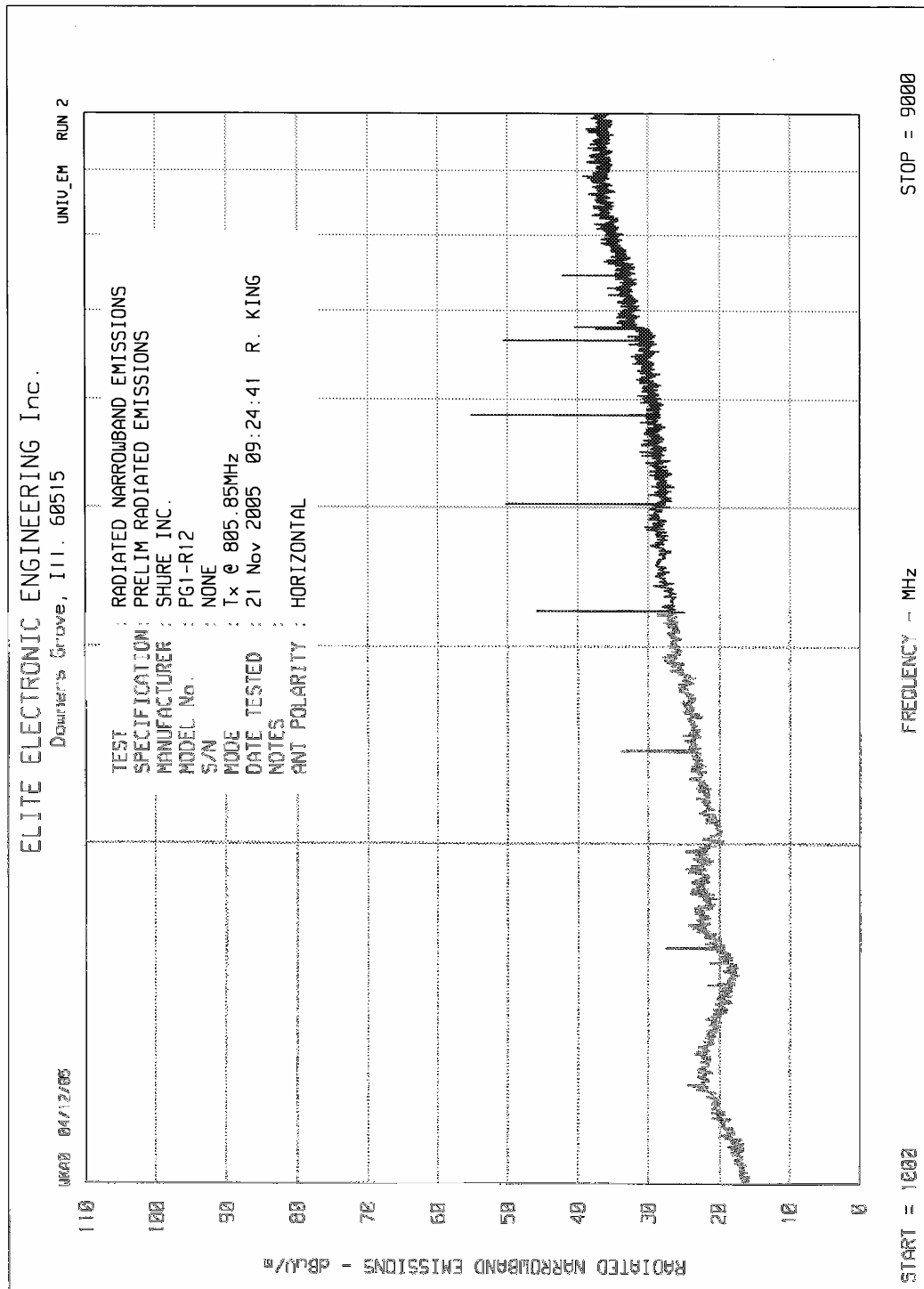


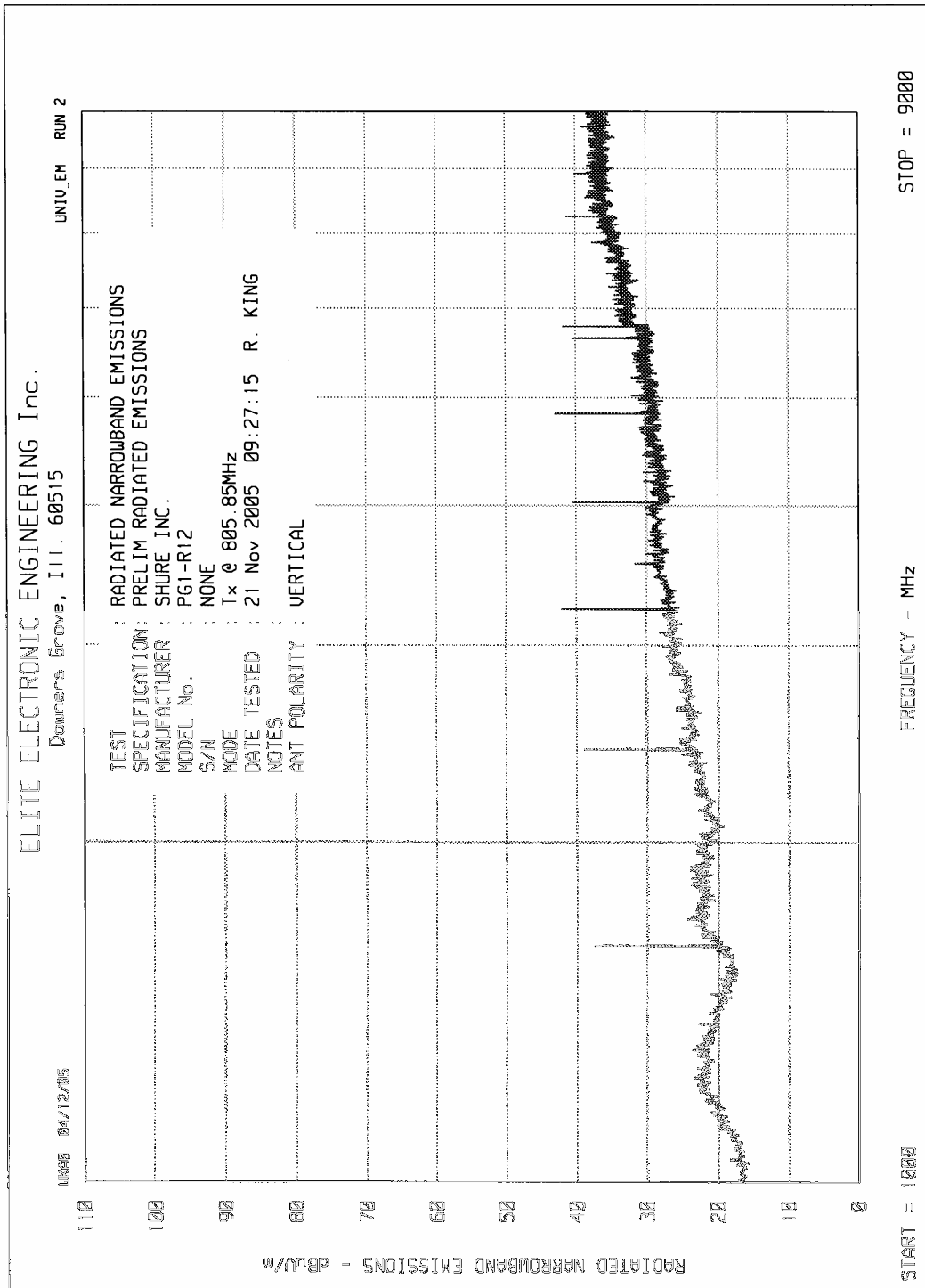














MANUFACTURER : Shure Inc.
MODEL NO. : PG1-H7 10mW
SERIAL NO. : None assigned
SPECIFICATION : FCC-74 Spurious Radiated Emissions
DATE : November 22, 2005
NOTES : Test Distance is 3 Meters

Freq. (MHz)	Ant Pol	Meter Reading (dBuV)	Ambient	Matched Sig Gen (dBm)	Antenna Gain (dB)	Cable Factor (dB)	ERP Total (dBm)	Part 74 Atten. (dB)	Part 74 Min. Atten. (dB)
1072.0	H	22.8		-50.3	2.6	3.0	-50.7	60.7	23
1072.0	V	25.2		-50.1	2.6	3.0	-50.5	60.5	23
1608.0	H	12.9		-69.0	5.0	3.8	-67.8	77.8	23
1608.0	V	13.4		-65.5	5.0	3.8	-64.3	74.3	23
2144.0	H	45.9		-63.7	5.3	4.3	-62.7	72.7	23
2144.0	V	44.1		-63.7	5.3	4.3	-62.7	72.7	23
2680.0	H	39.3	*	-72.0	5.3	5.0	-71.7	81.7	23
2680.0	V	40.9	*	-72.0	5.3	5.0	-71.7	81.7	23
3216.0	H	41.7		-57.8	5.9	5.5	-57.5	67.5	23
3216.0	V	41.7		-57.8	5.9	5.5	-57.5	67.5	23
3752.0	H	39.3		-59.5	6.8	5.9	-58.6	68.6	23
3752.0	V	40.0		-59.5	6.8	5.9	-58.6	68.6	23
4288.0	H	38.6	*	-65.4	7.8	6.4	-64.0	74.0	23
4288.0	V	39.7	*	-65.4	7.8	6.4	-64.0	74.0	23
4824.0	H	40.4	*	-60.4	8.0	6.8	-59.2	69.2	23
4824.0	V	39.7	*	-60.4	8.0	6.8	-59.2	69.2	23
5360.0	H	38.4	*	-58.9	7.5	7.2	-58.6	68.6	23
5360.0	V	39.3	*	-58.9	7.5	7.2	-58.6	68.6	23

Checked BY :

RICHARD E. KING

Richard E. King



MANUFACTURER : Shure Inc.
MODEL NO. : PG1-H7 10mW
SERIAL NO. : None assigned
SPECIFICATION : RSS-123 Spurious Radiated Emissions
DATE : November 22, 2005
NOTES : Test Distance is 3 Meters

Freq. (MHz)	Ant Pol	Meter Reading (dBuV)	Ambient	Matched Sig Gen (dBm)	Antenna Gain (dB)	Cable Factor (dB)	ERP Total (dBm)	RSS- 123 Atten. (dB)	RSS-123 Min. Atten. (dB)
1072.0	H	22.8		-50.3	2.6	3.0	-50.7	60.7	35
1072.0	V	25.2		-50.1	2.6	3.0	-50.5	60.5	35
1608.0	H	12.9		-69.0	5.0	3.8	-67.8	77.8	35
1608.0	V	13.4		-65.5	5.0	3.8	-64.3	74.3	35
2144.0	H	45.9		-63.7	5.3	4.3	-62.7	72.7	35
2144.0	V	44.1		-63.7	5.3	4.3	-62.7	72.7	35
2680.0	H	39.3	*	-72.0	5.3	5.0	-71.7	81.7	35
2680.0	V	40.9	*	-72.0	5.3	5.0	-71.7	81.7	35
3216.0	H	41.7		-57.8	5.9	5.5	-57.5	67.5	35
3216.0	V	41.7		-57.8	5.9	5.5	-57.5	67.5	35
3752.0	H	39.3		-59.5	6.8	5.9	-58.6	68.6	35
3752.0	V	40.0		-59.5	6.8	5.9	-58.6	68.6	35
4288.0	H	38.6	*	-65.4	7.8	6.4	-64.0	74.0	35
4288.0	V	39.7	*	-65.4	7.8	6.4	-64.0	74.0	35
4824.0	H	40.4	*	-60.4	8.0	6.8	-59.2	69.2	35
4824.0	V	39.7	*	-60.4	8.0	6.8	-59.2	69.2	35
5360.0	H	38.4	*	-58.9	7.5	7.2	-58.6	68.6	35
5360.0	V	39.3	*	-58.9	7.5	7.2	-58.6	68.6	35

Checked BY :

Richard E. King

Richard E. King



MANUFACTURER : Shure Inc.
MODEL NO. : PG1-M7 10mW
SERIAL NO. : None assigned
SPECIFICATION : FCC-74 Spurious Radiated Emissions
DATE : November 22, 2005
NOTES : Test Distance is 3 Meters

Freq. (MHz)	Ant Pol	Meter Reading (dBuV)	Ambient	Matched Sig Gen (dBm)	Antenna Gain (dB)	Cable Factor (dB)	ERP Total (dBm)	Part 74 Atten. (dB)	Part 74 Min. Atten. (dB)
1342.4	H	17.8		-58.2	4.1	2.1	-56.2	66.2	23
1342.4	V	22.0		-52.5	4.1	2.1	-50.5	60.5	23
2013.6	H	56.3		-49.3	5.3	2.5	-46.5	56.5	23
2013.6	V	55.4		-49.7	5.3	2.5	-46.9	56.9	23
2684.8	H	46.6		-57.7	5.3	3.0	-55.4	65.4	23
2684.8	V	46.8		-57.7	5.3	3.0	-55.4	65.4	23
3356.0	H	51.3		-49.1	6.2	3.4	-46.3	56.3	23
3356.0	V	45.9		-49.1	6.2	3.4	-46.3	56.3	23
4027.2	H	48.6		-48.0	7.1	3.7	-44.5	54.5	23
4027.2	V	42.5		-48.0	7.1	3.7	-44.5	54.5	23
4698.4	H	42.9		-54.4	8.1	4.0	-50.3	60.3	23
4698.4	V	43.1		-54.4	8.1	4.0	-50.3	60.3	23
5369.6	H	42.1	*	-51.4	7.5	4.3	-48.2	58.2	23
5369.6	V	39.0	*	-51.4	7.5	4.3	-48.2	58.2	23
6040.8	H	43.4	*	-50.6	7.7	4.6	-47.6	57.6	23
6040.8	V	41.4	*	-50.6	7.7	4.6	-47.6	57.6	23
6712.0	H	42.2	*	-55.5	8.0	5.2	-52.7	62.7	23
6712.0	V	40.3	*	-55.5	8.0	5.2	-52.7	62.7	23

Checked BY :

RICHARD E. KING

Richard E. King



MANUFACTURER : Shure Inc.
MODEL NO. : PG1-M7 10mW
SERIAL NO. : None assigned
SPECIFICATION : RSS-123 Spurious Radiated Emissions
DATE : November 22, 2005
NOTES : Test Distance is 3 Meters

Freq. (MHz)	Ant Pol	Meter Reading (dBuV)	Ambient	Matched Sig Gen (dBm)	Antenna Gain (dB)	Cable Factor (dB)	ERP Total (dBm)	RSS- 123 Atten. (dB)	RSS-123 Min. Atten. (dB)
1342.4	H	17.8		-58.2	4.1	2.1	-56.2	66.2	35
1342.4	V	22.0		-52.5	4.1	2.1	-50.5	60.5	35
2013.6	H	56.3		-49.3	5.3	2.5	-46.5	56.5	35
2013.6	V	55.4		-49.7	5.3	2.5	-46.9	56.9	35
2684.8	H	46.6		-57.7	5.3	3.0	-55.4	65.4	35
2684.8	V	46.8		-57.7	5.3	3.0	-55.4	65.4	35
3356.0	H	51.3		-49.1	6.2	3.4	-46.3	56.3	35
3356.0	V	45.9		-49.1	6.2	3.4	-46.3	56.3	35
4027.2	H	48.6		-48.0	7.1	3.7	-44.5	54.5	35
4027.2	V	42.5		-48.0	7.1	3.7	-44.5	54.5	35
4698.4	H	42.9		-54.4	8.1	4.0	-50.3	60.3	35
4698.4	V	43.1		-54.4	8.1	4.0	-50.3	60.3	35
5369.6	H	42.1	*	-51.4	7.5	4.3	-48.2	58.2	35
5369.6	V	39.0	*	-51.4	7.5	4.3	-48.2	58.2	35
6040.8	H	43.4	*	-50.6	7.7	4.6	-47.6	57.6	35
6040.8	V	41.4	*	-50.6	7.7	4.6	-47.6	57.6	35
6712.0	H	42.2	*	-55.5	8.0	5.2	-52.7	62.7	35
6712.0	V	40.3	*	-55.5	8.0	5.2	-52.7	62.7	35

Checked BY :

RICHARD E. KING

Richard E. King



MANUFACTURER : Shure Inc.
MODEL NO. : PG1-R12 10mW
SERIAL NO. : None assigned
SPECIFICATION : FCC-74 Spurious Radiated Emissions
DATE : November 22, 2005
NOTES : Test Distance is 3 Meters

Freq. (MHz)	Ant Pol	Meter Reading (dBuV)	Ambient	Matched Sig Gen (dBm)	Antenna Gain (dB)	Cable Factor (dB)	ERP Total (dBm)	Part 74 Atten. (dB)	Part 74 Min. Atten. (dB)
1611.7	H	23.4		-51.3	5.0	2.3	-48.6	58.6	23
1611.7	V	25.4		-49.7	5.0	2.3	-47.0	57.0	23
2417.6	H	53.6		-50.3	5.3	2.8	-47.8	57.8	23
2417.6	V	58.8		-50.3	5.3	2.8	-47.8	57.8	23
3223.4	H	50.7		-49.8	5.9	3.3	-47.2	57.2	23
3223.4	V	49.0		-49.8	5.9	3.3	-47.2	57.2	23
4029.3	H	54.2		-56.7	7.1	3.7	-53.2	63.2	23
4029.3	V	45.7		-56.7	7.1	3.7	-53.2	63.2	23
4835.1	H	55.5		-39.9	8.0	4.1	-36.0	46.0	23
4835.1	V	50.7		-39.9	8.0	4.1	-36.0	46.0	23
5641.0	H	48.8		-42.5	7.4	4.4	-39.5	49.5	23
5641.0	V	43.0		-42.5	7.4	4.4	-39.5	49.5	23
6446.8	H	42.5		-52.9	8.0	5.0	-49.8	59.8	23
6446.8	V	43.2		-52.9	8.0	5.0	-49.8	59.8	23
7252.7	H	41.2	*	-54.0	7.6	5.6	-52.0	62.0	23
7252.7	V	41.0	*	-54.0	7.6	5.6	-52.0	62.0	23
8058.5	H	39.8	*	-54.3	8.6	6.2	-52.0	62.0	23
8058.5	V	41.1	*	-54.3	8.6	6.2	-52.0	62.0	23

Checked BY : RICHARD E. KING

Richard E. King



MANUFACTURER : Shure Inc.
MODEL NO. : PG1-R12 10mW
SERIAL NO. : None assigned
SPECIFICATION : RSS-123 Spurious Radiated Emissions
DATE : November 22, 2005
NOTES : Test Distance is 3 Meters

Freq. (MHz)	Ant Pol	Meter Reading (dBuV)	Ambient	Matched Sig Gen (dBm)	Antenna Gain (dB)	Cable Factor (dB)	ERP Total (dBm)	RSS- 123 Atten. (dB)	RSS-123 Min. Atten. (dB)
1611.7	H	23.4		-51.3	5.0	2.3	-48.6	58.6	35
1611.7	V	25.4		-49.7	5.0	2.3	-47.0	57.0	35
2417.6	H	53.6		-50.3	5.3	2.8	-47.8	57.8	35
2417.6	V	58.8		-50.3	5.3	2.8	-47.8	57.8	35
3223.4	H	50.7		-49.8	5.9	3.3	-47.2	57.2	35
3223.4	V	49.0		-49.8	5.9	3.3	-47.2	57.2	35
4029.3	H	54.2		-56.7	7.1	3.7	-53.2	63.2	35
4029.3	V	45.7		-56.7	7.1	3.7	-53.2	63.2	35
4835.1	H	55.5		-39.9	8.0	4.1	-36.0	46.0	35
4835.1	V	50.7		-39.9	8.0	4.1	-36.0	46.0	35
5641.0	H	48.8		-42.5	7.4	4.4	-39.5	49.5	35
5641.0	V	43.0		-42.5	7.4	4.4	-39.5	49.5	35
6446.8	H	42.5		-52.9	8.0	5.0	-49.8	59.8	35
6446.8	V	43.2		-52.9	8.0	5.0	-49.8	59.8	35
7252.7	H	41.2	*	-54.0	7.6	5.6	-52.0	62.0	35
7252.7	V	41.0	*	-54.0	7.6	5.6	-52.0	62.0	35
8058.5	H	39.8	*	-54.3	8.6	6.2	-52.0	62.0	35
8058.5	V	41.1	*	-54.3	8.6	6.2	-52.0	62.0	35

Checked BY : RICHARD E. KING

Richard E. King