



MCP20C48
1 Kbit
ROM

P10T DM2

MICREL
KS2893AM
089457
08/21/02

P10T DM2

VA



WARNING: High Voltage
CAUTION: Hot Components
DO NOT TOUCH
INTERNAL COMPONENTS
WHILE THE UNIT IS ON
OR IMMEDIATELY AFTER
POWER IS REMOVED.
SERIAL NUMBER: 12345678
DATE OF MANUFACTURE: 01/2000

MPC5200VH908
M67C
REV 1
H810HD

P10T DM2

MICREL
K92892M
REV 1.0
QW1015T

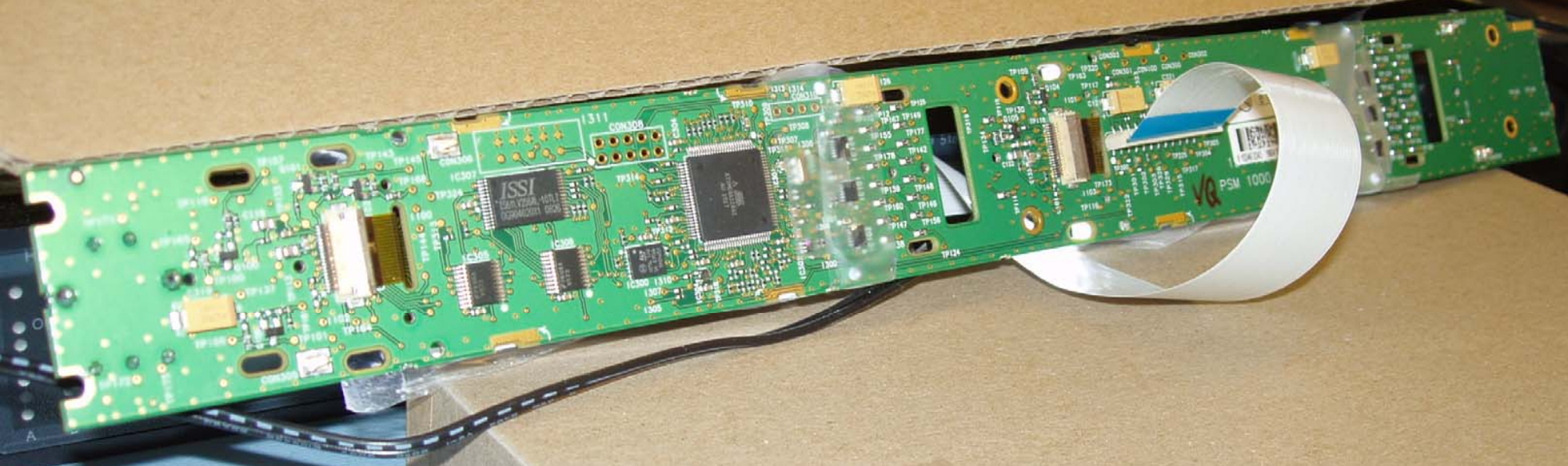
P10T DM2

100
4R7

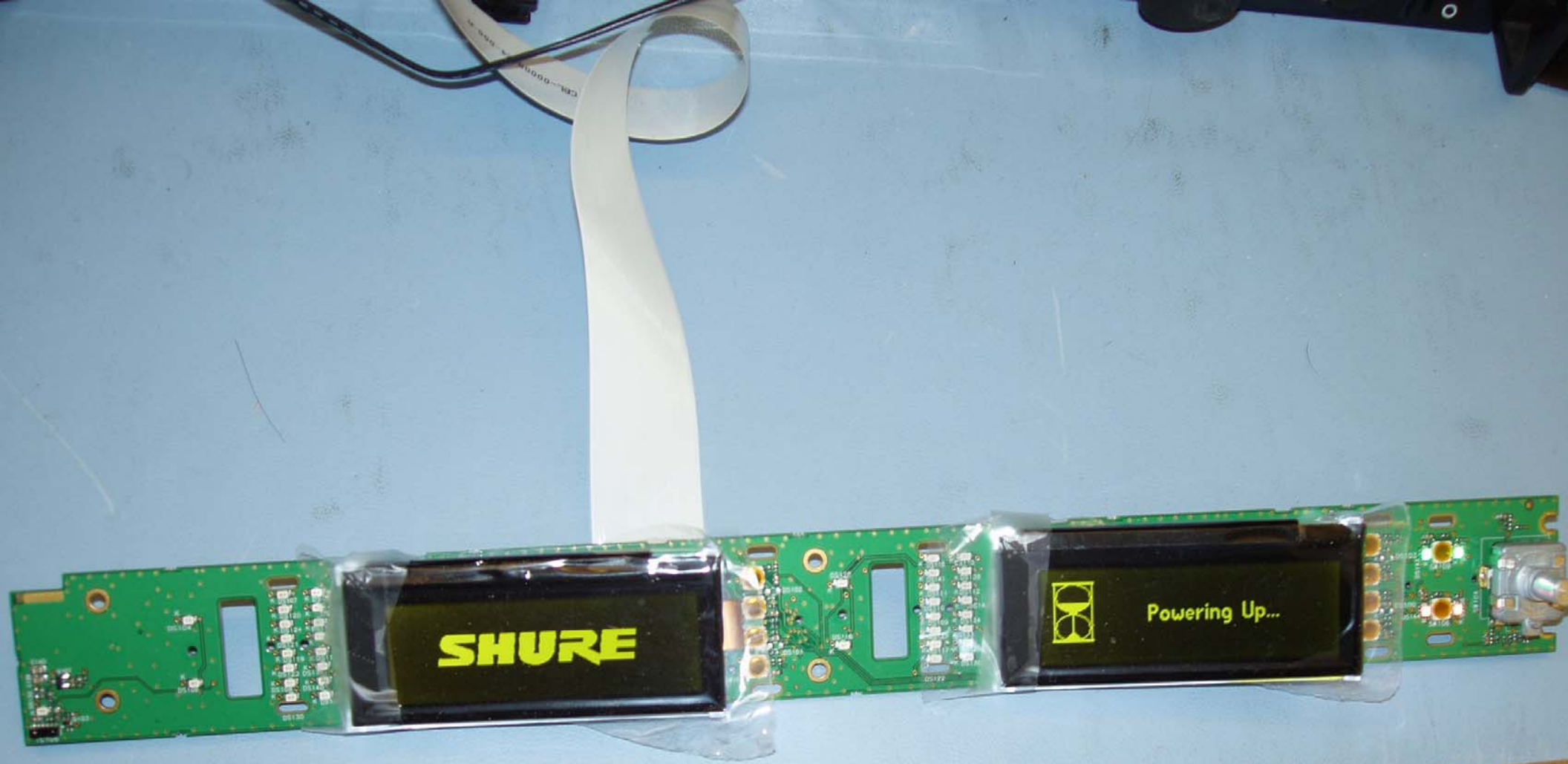
TP-445
REV 1.0

100





20A2001
5 pcs -



SHURE



Powering Up...