



# MEASUREMENTS OF SHURE MXW6X ANTENNAS FOR REGULATORY APPROVAL

**1.9GHZ ANTENNA A**

**1.9GHZ ANTENNA B**

**2.4GHZ BLUETOOTH ANTENNA**



# Contents

- 1. Overview and Reference Angles ..... 3
- 2. 1.9GHz Antenna A..... 5
- 3. 1.9GHz Antenna B..... 8
- 4. 2.4GHz Bluetooth Antenna ..... 12

## Table of Figures

- Figure 1-1. Shure MXW6X Internal Antennas Overview ..... 3
- Figure 1-2. Shure MXW6X Antennas Block Diagram ..... 4
- Figure 1-3. MXW6X Reference Angles ..... 4
- Figure 2-1. 1.9GHz Antenna A X-Y Plane. .... 5
- Figure 2-2. 1.9GHz Antenna A Y-Z Plane..... 6
- Figure 2-3. 1.9GHz Antenna A X-Z plane ..... 6
- Figure 2-4. 1.9GHz Antenna A 3D ..... 7
- Figure 3-1. 1.9GHz Antenna B X-Y Plane. .... 8
- Figure 3-2. 1.9GHz Antenna B Y-Z Plane..... 9
- Figure 3-3. 1.9GHz Antenna B X-Z Plane..... 10
- Figure 3-4. 1.9GHz Antenna B 3D ..... 11
- Figure 4-1. 2.4GHz Antenna X-Y plane. 2442MHz..... 12
- Figure 4-2. 2.4GHz Antenna Y-Z plane. 2442MHz ..... 13
- Figure 4-3. 2.4GHz Antenna X-Z plane. 2442MHz ..... 14
- Figure 4-4. 2.4GHz Antenna 3D. 2442MHz ..... 15



# 1. Overview and Reference Angles

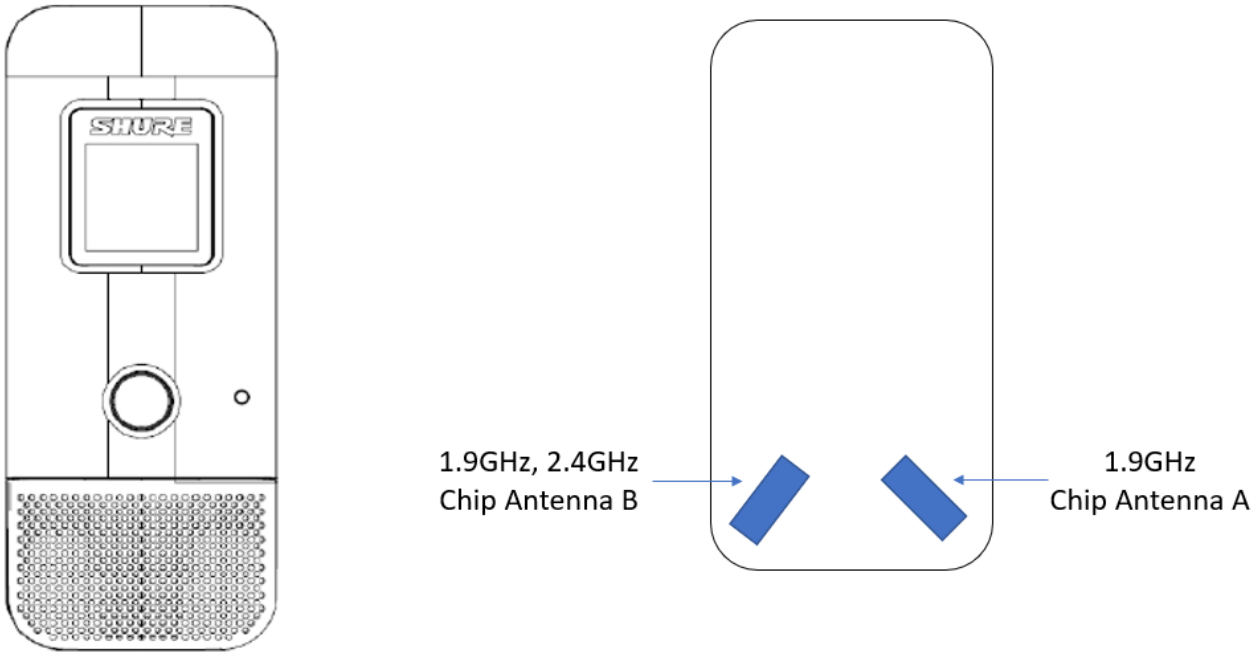


Figure 1-1. Shure MXW6X Internal Antennas Overview

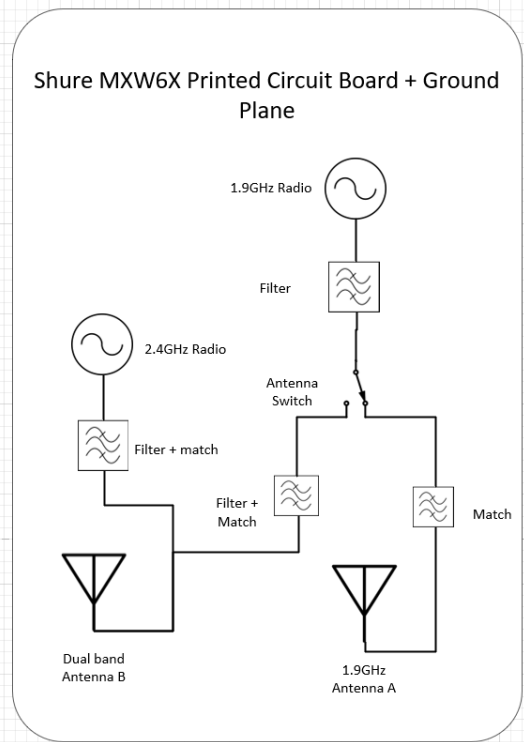


Figure 1-2. Shure MXW6X Antennas Block Diagram

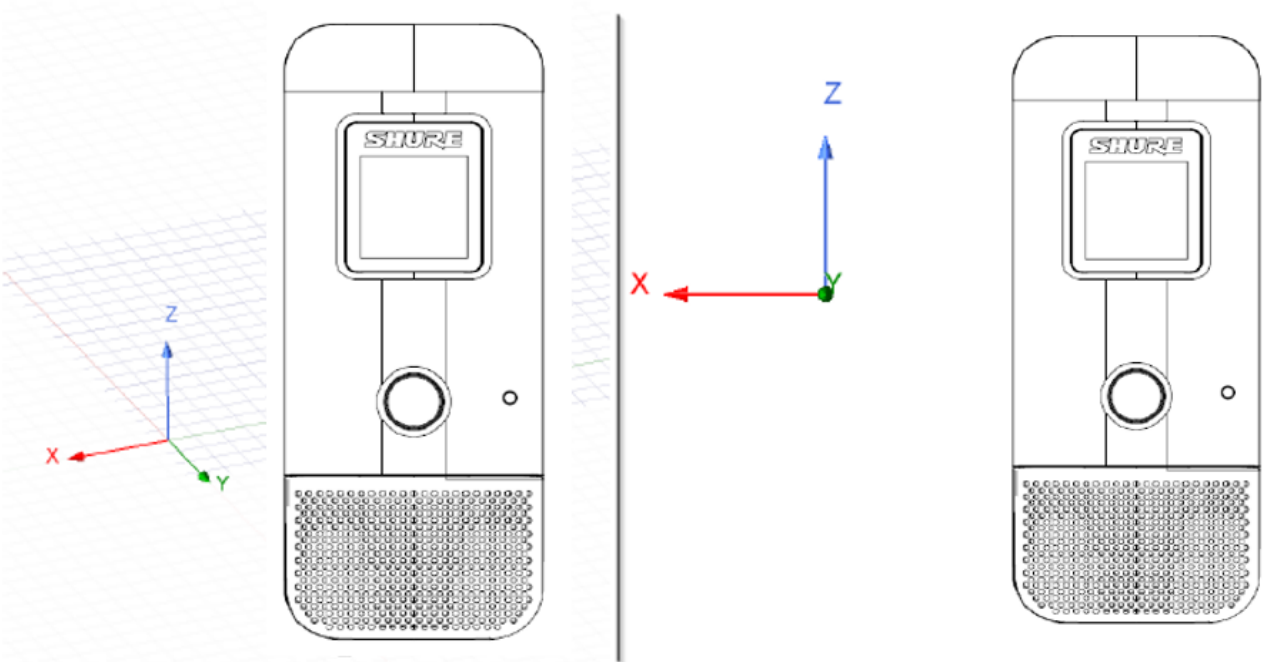


Figure 1-3. MXW6X Reference Angles



## 2. 1.9GHz Antenna A

Peak Gain					
Parameter	Type	Pattern	1880 MHz	1905 MHz	1930 MHz
Antenna A	Internal Chip Antenna	Omni	1.11 dBi	1.48 dBi	1.72 dBi

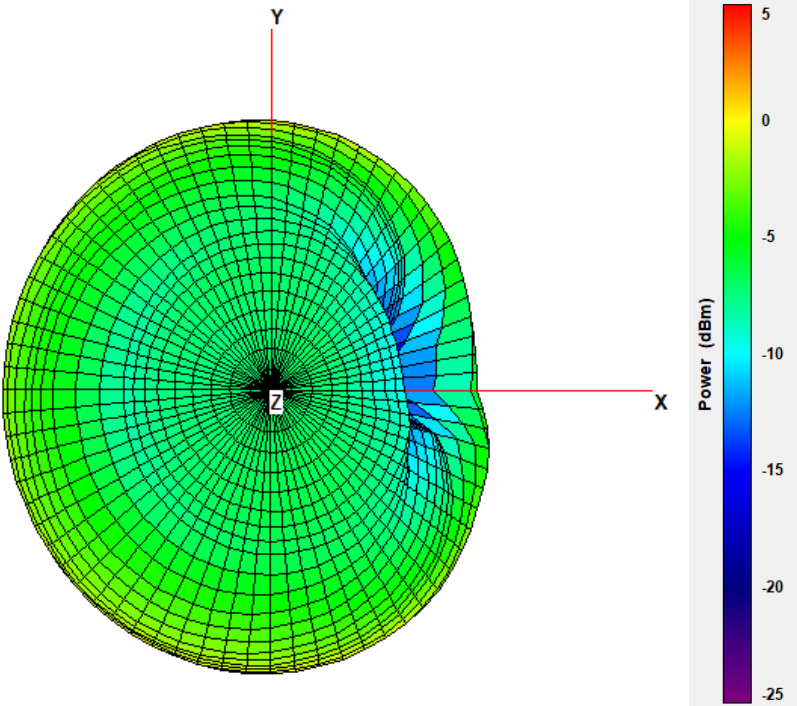


Figure 2-1. 1.9GHz Antenna A X-Y Plane.



Shure MXW6X Antenna Measurements

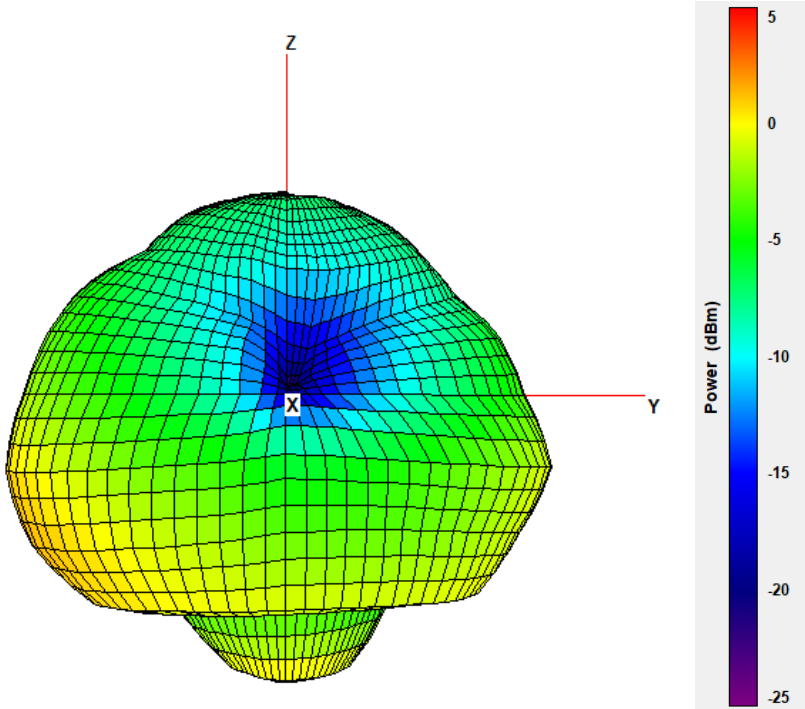


Figure 2-2. 1.9GHz Antenna A Y-Z Plane

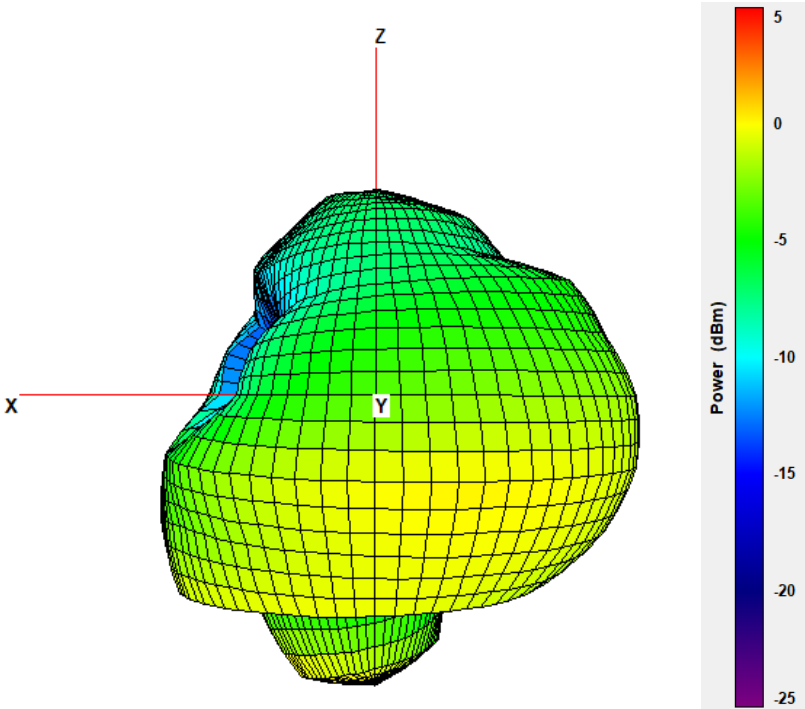


Figure 2-3. 1.9GHz Antenna A X-Z plane



Shure MXW6X Antenna Measurements

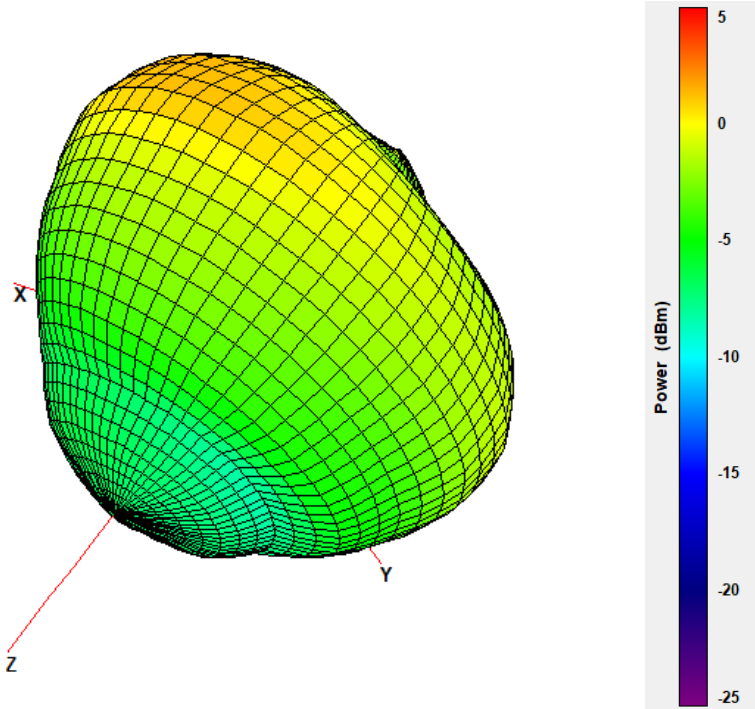


Figure 2-4. 1.9GHz Antenna A 3D



### 3. 1.9GHz Antenna B

Peak Gain					
Parameter	Type	Pattern	1880 MHz	1905 MHz	1930 MHz
Antenna B	Internal Chip Antenna	Omni	-1.94 dBi	-1.00 dBi	-0.70 dBi

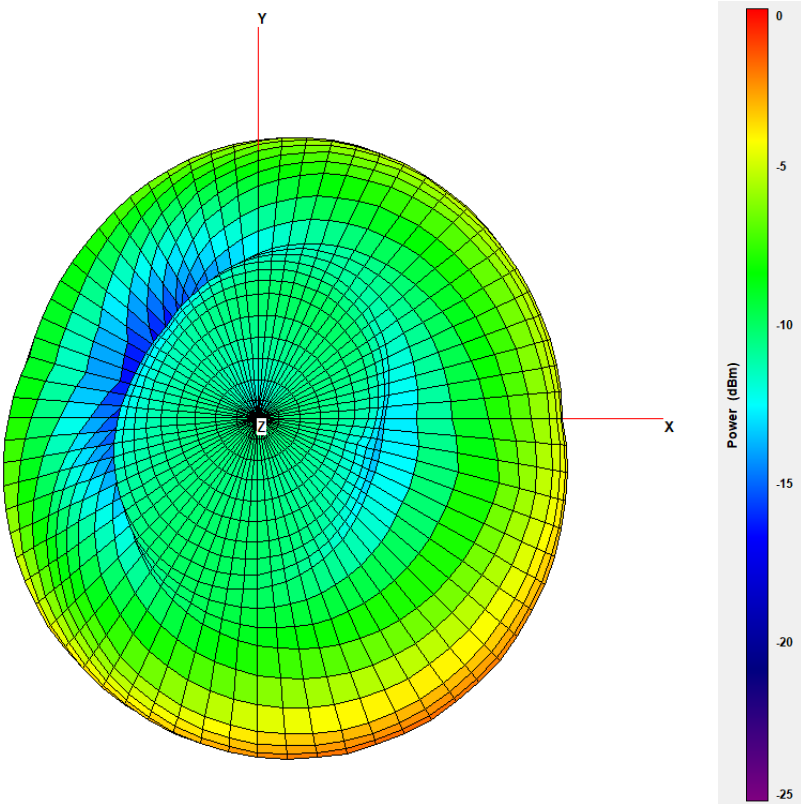


Figure 3-1. 1.9GHz Antenna B X-Y Plane.



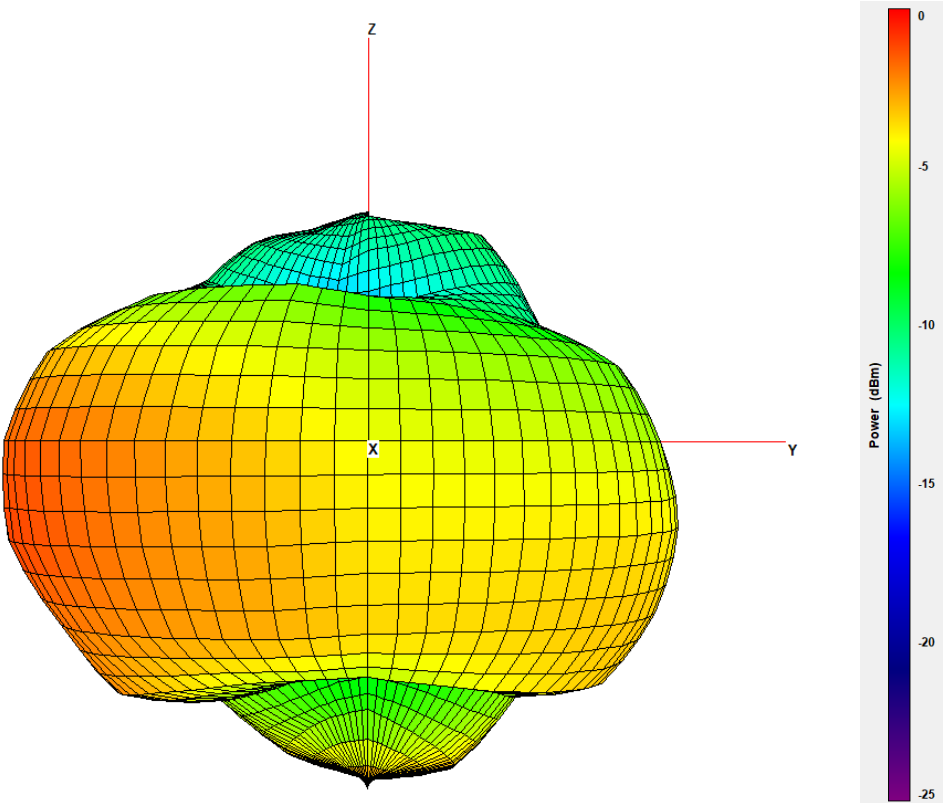


Figure 3-2. 1.9GHz Antenna B Y-Z Plane.

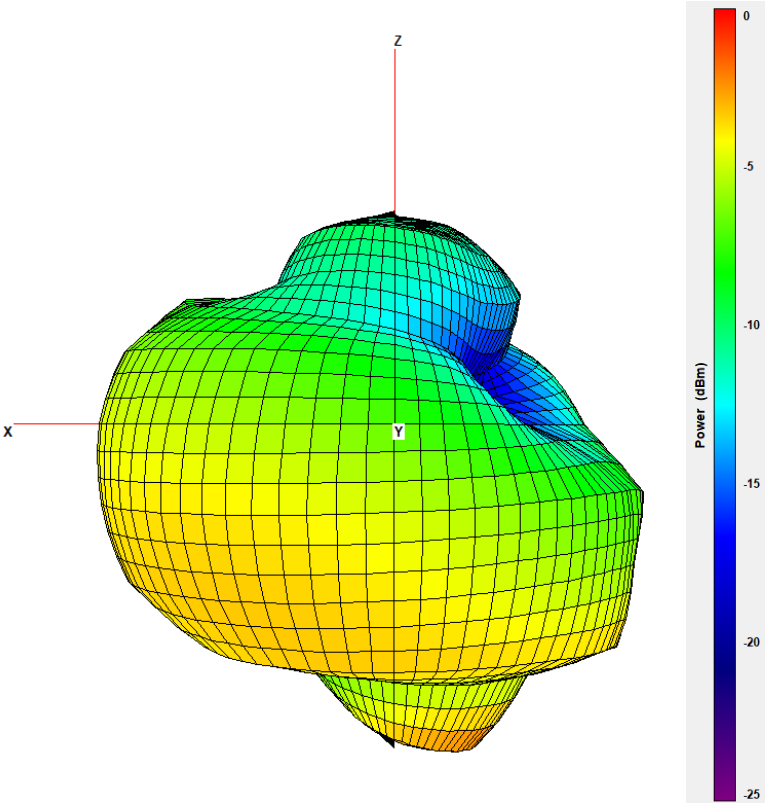


Figure 3-3. 1.9GHz Antenna B X-Z Plane.

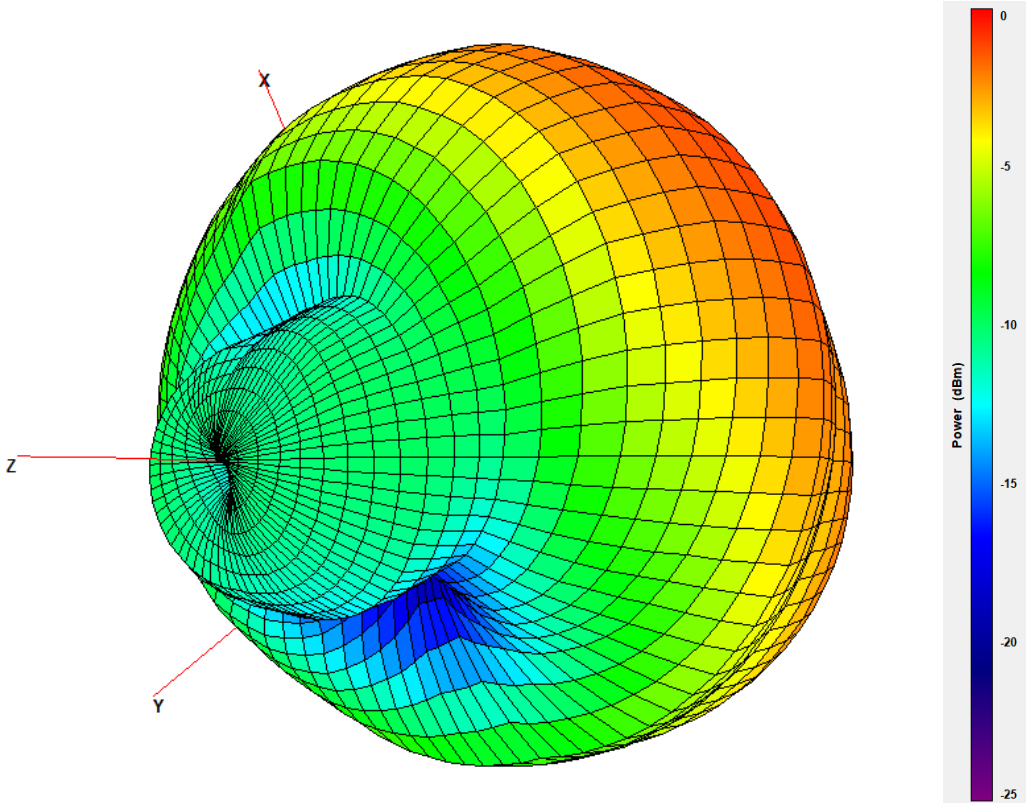


Figure 3-4. 1.9GHz Antenna B 3D



### 4. 2.4GHz Bluetooth Antenna

Peak Gain					
Parameter	Type	Pattern	2412 MHz	2442 MHz	2482 MHz
2.4GHz Antenna	Internal Chip	Omni	2.63 dBi	2.15 dBi	1.21dBi

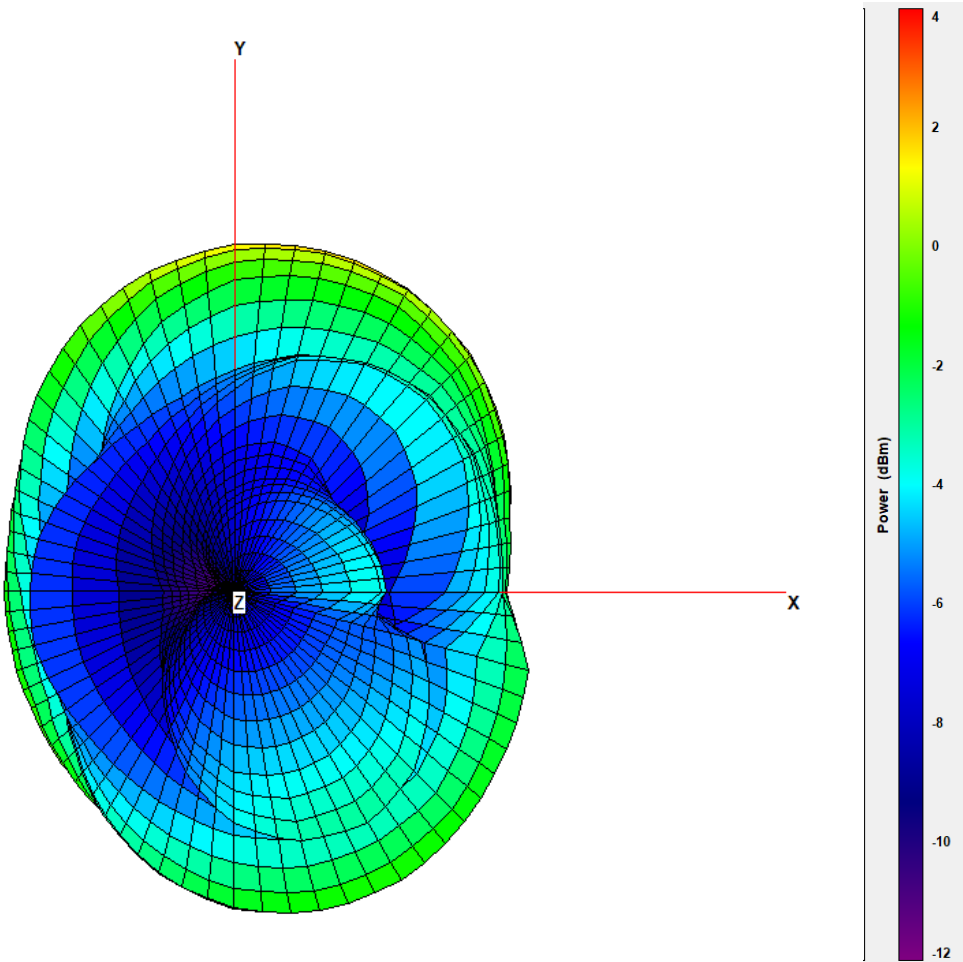


Figure 4-1. 2.4GHz Antenna X-Y plane. 2442MHz.

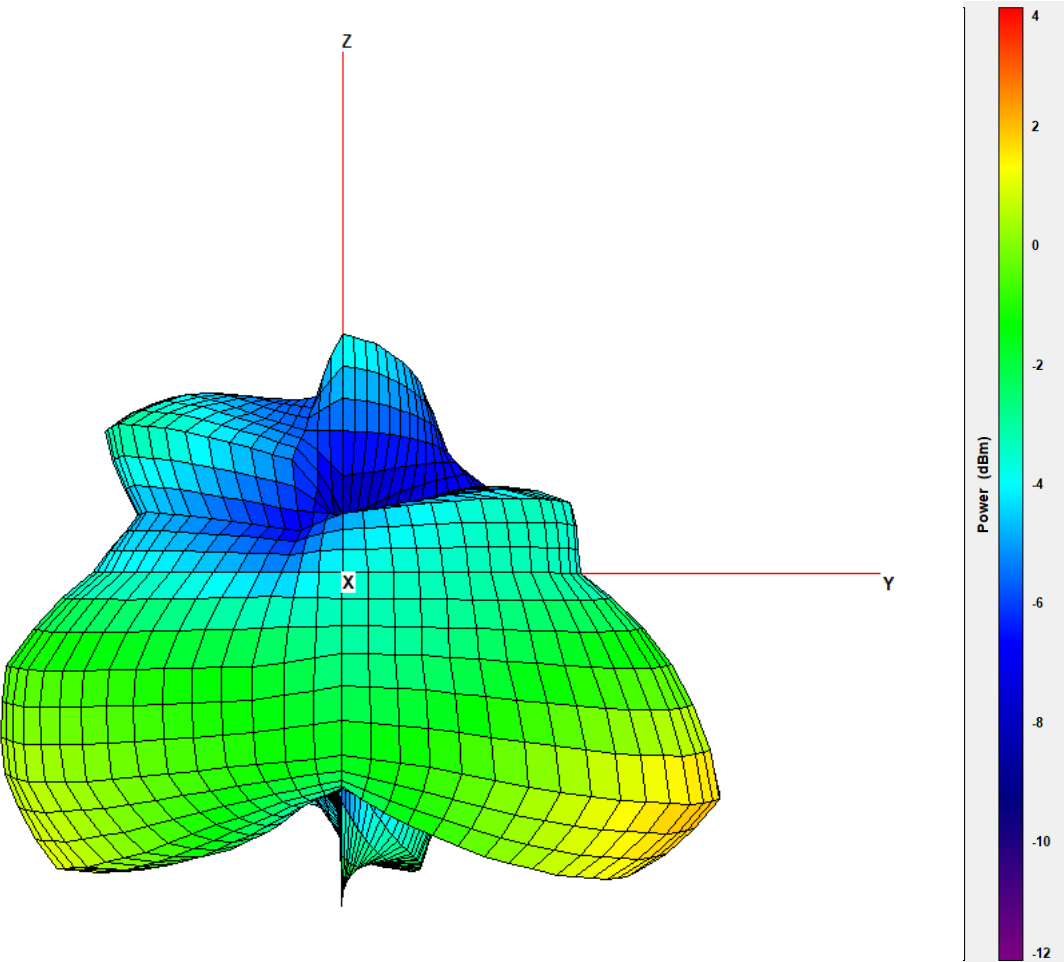


Figure 4-2. 2.4GHz Antenna Y-Z plane. 2442MHz

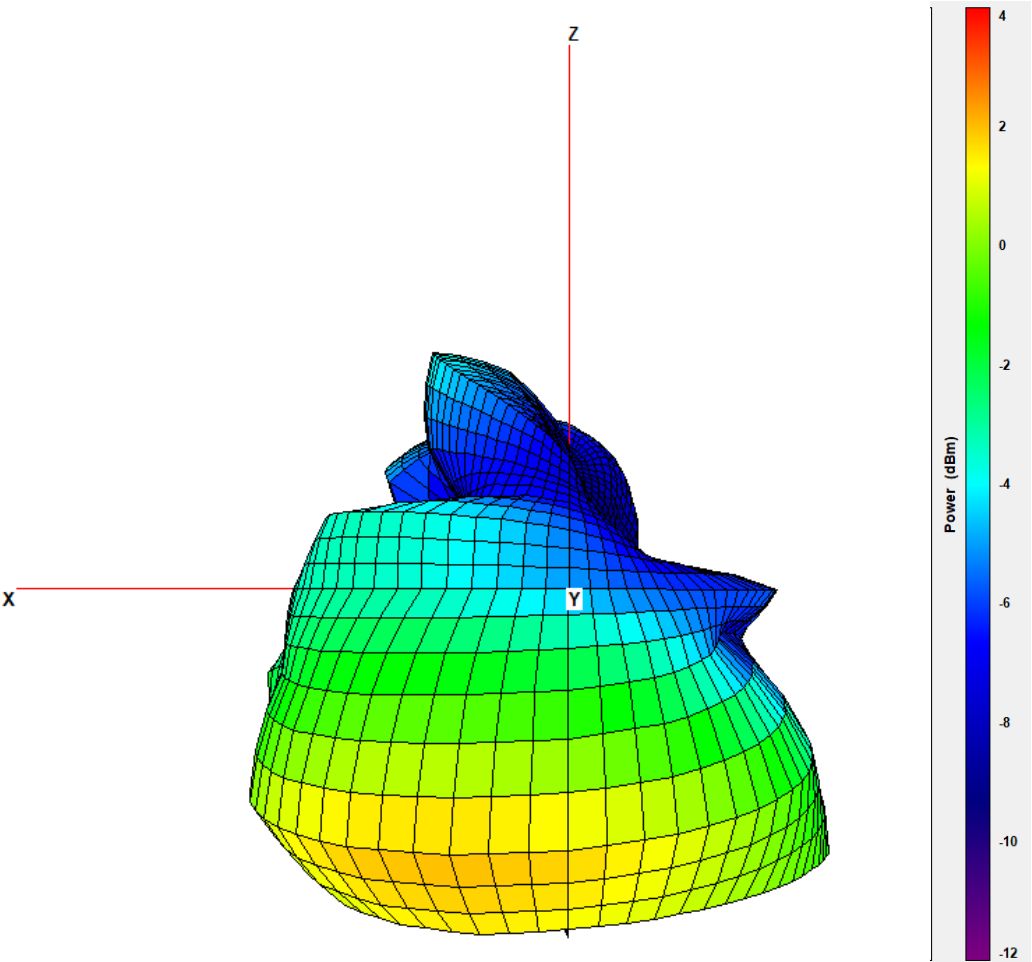


Figure 4-3. 2.4GHz Antenna X-Z plane. 2442MHz

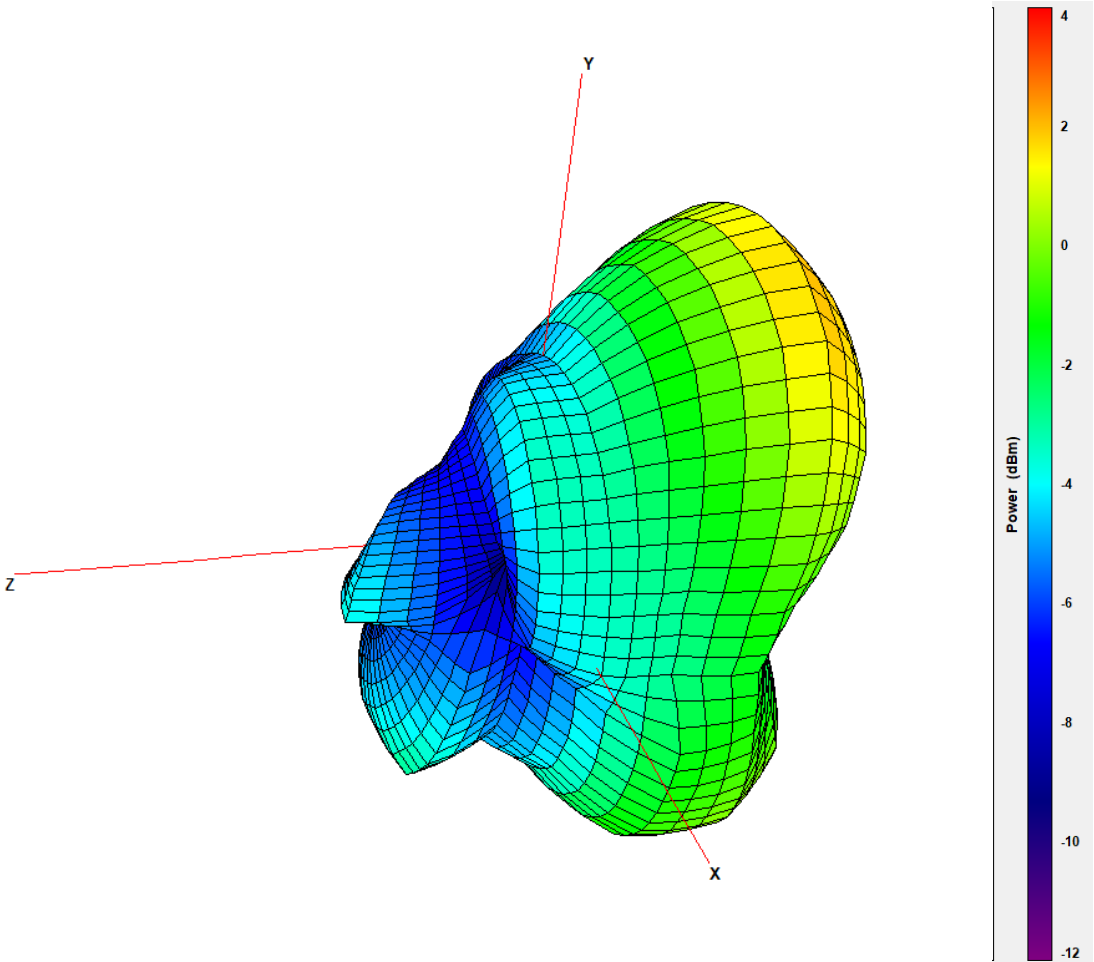


Figure 4-4. 2.4GHz Antenna 3D. 2442MHz