



MEASUREMENTS OF SHURE MXW2X ANTENNAS FOR REGULATORY APPROVAL

1.9GHZ ANTENNA A

1.9GHZ ANTENNA B

2.4GHZ BLUETOOTH ANTENNA



Contents

- 1. Overview and Reference Angles..... 3
- 2. 1.9GHz Antenna A..... 5
- 3. 1.9GHz Antenna B..... 7
- 4. 2.4GHz Bluetooth Antenna 10

Table of Figures

- Figure 1-1. Shure MXW2X Internal Antennas Overview 3
- Figure 1-2. Shure MXW2X Antennas Block Diagram 4
- Figure 1-3. MXW2X Reference Angles..... 4
- Figure 2-1. 1.9GHz Antenna A X-Y Plane. 5
- Figure 2-2. 1.9GHz Antenna A Y-Z Plane..... 5
- Figure 2-3. 1.9GHz Antenna A X-Z plane 6
- Figure 2-4. 1.9GHz Antenna A 3D 6
- Figure 3-1. 1.9GHz Antenna B X-Y Plane. 7
- Figure 3-2. 1.9GHz Antenna B Y-Z Plane..... 8
- Figure 3-3. 1.9GHz Antenna B X-Z Plane..... 8
- Figure 3-4. 1.9GHz Antenna B 3D 9
- Figure 4-1. 2.4GHz Antenna X-Y plane. 2442MHz..... 10
- Figure 4-2. 2.4GHz Antenna Y-Z plane. 2442MHz 11
- Figure 4-3. 2.4GHz Antenna X-Z plane. 2442MHz 11
- Figure 4-4. 2.4GHz Antenna 3D. 2442MHz 12



1. Overview and Reference Angles

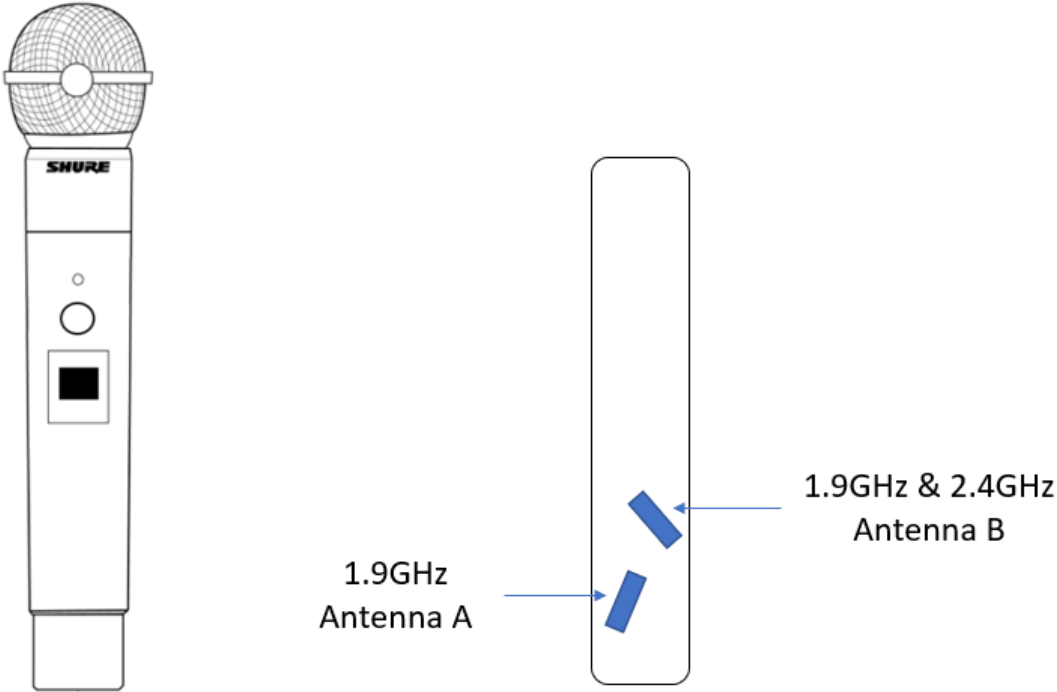


Figure 1-1. Shure MXW2X Internal Antennas Overview

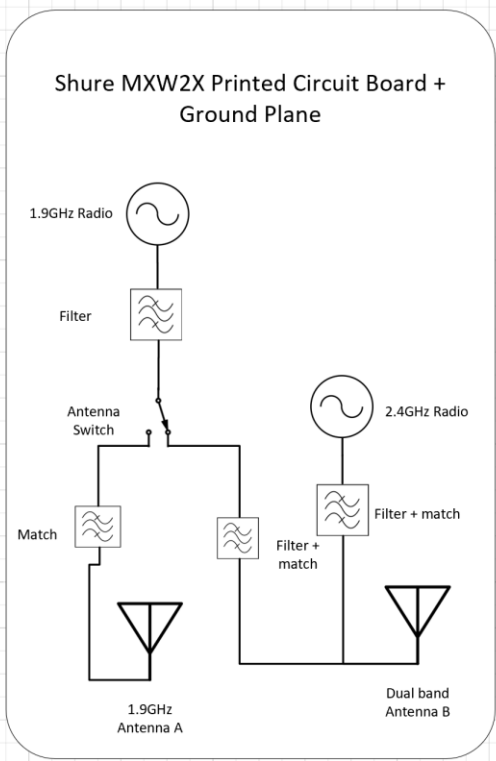


Figure 1-2. Shure MXW2X Antennas Block Diagram

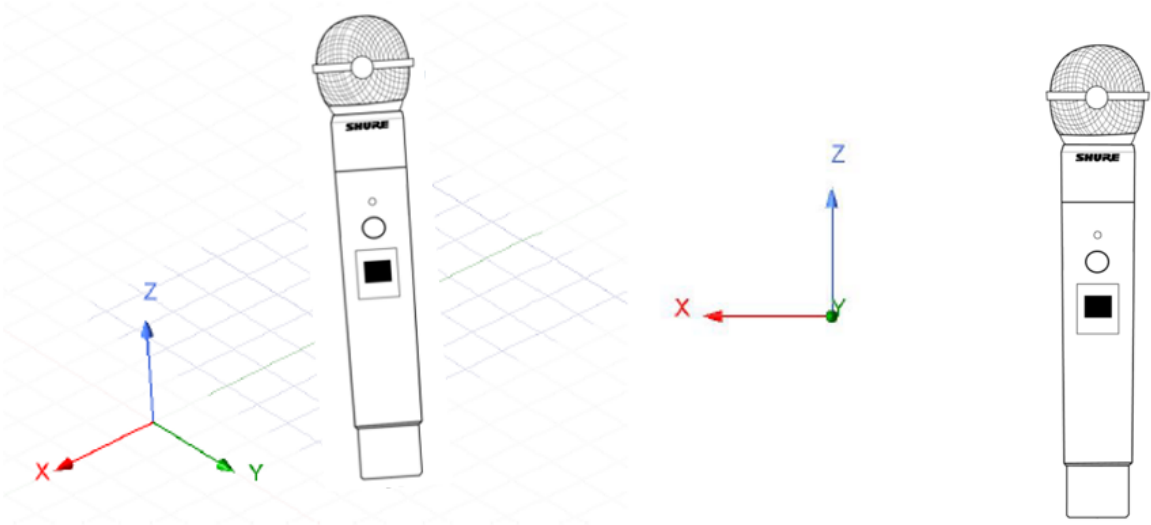


Figure 1-3. MXW2X Reference Angles



2. 1.9GHz Antenna A

Peak Gain					
Parameter	Type	Pattern	1880 MHz	1905 MHz	1930 MHz
Antenna A	Internal Chip Antenna	Omni	3.43 dBi	2.73 dBi	1.91 dBi

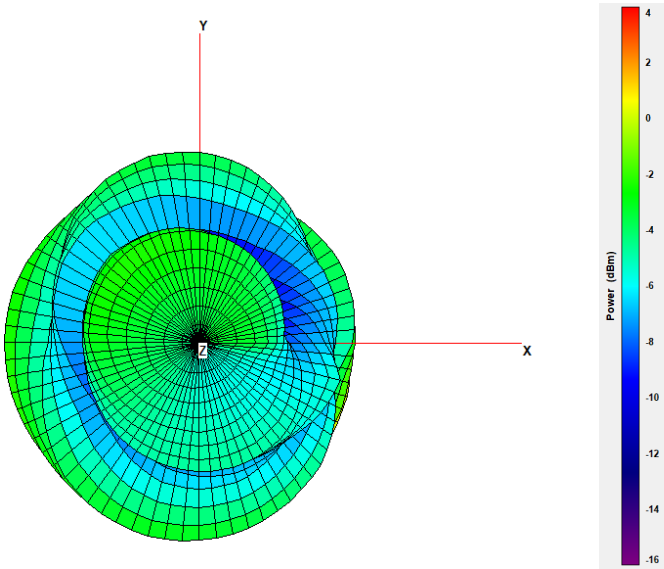


Figure 2-1. 1.9GHz Antenna A X-Y Plane.

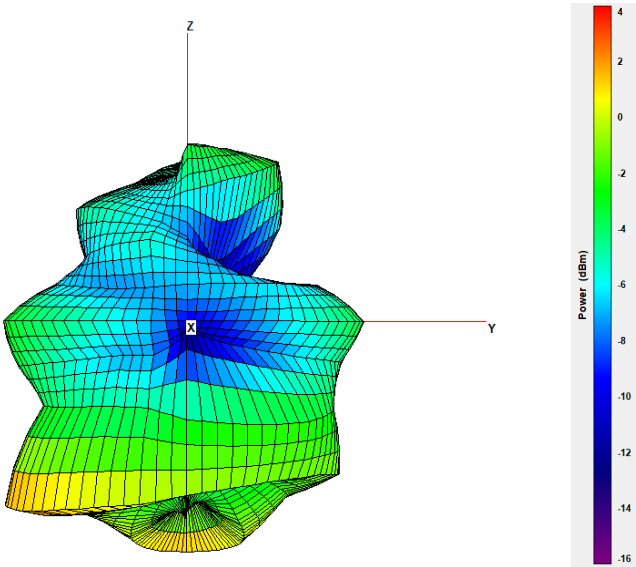


Figure 2-2. 1.9GHz Antenna A Y-Z Plane

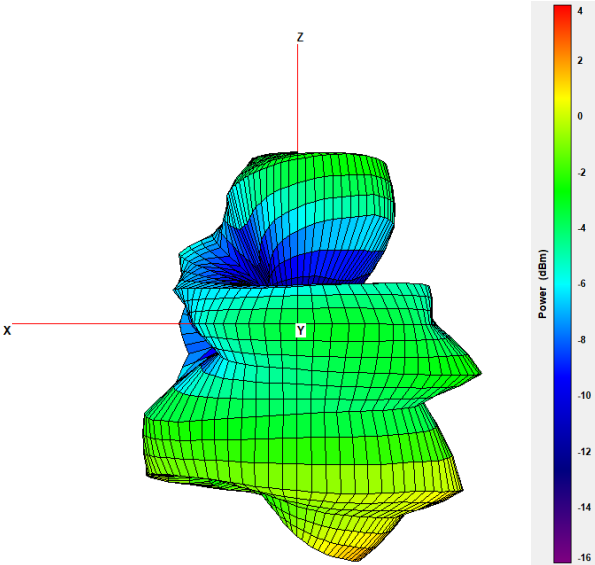


Figure 2-3. 1.9GHz Antenna A X-Z plane

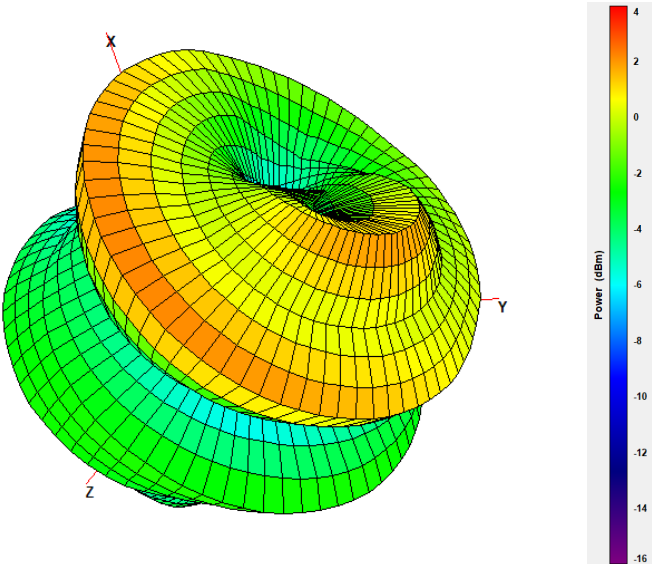


Figure 2-4. 1.9GHz Antenna A 3D



3. 1.9GHz Antenna B

Peak Gain					
Parameter	Type	Pattern	1880 MHz	1905 MHz	1930 MHz
Antenna B	Internal Chip Antenna	Omni	-1.7 dBi	-0.96 dBi	-0.26 dBi

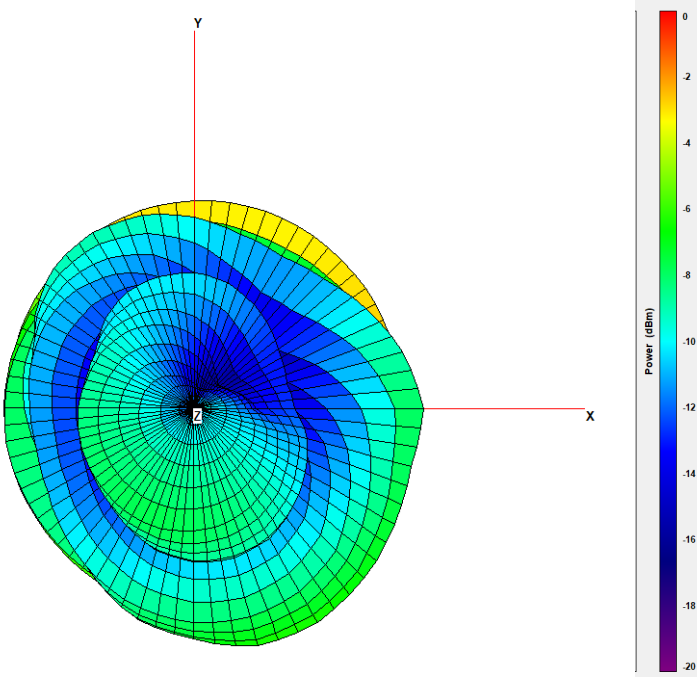


Figure 3-1. 1.9GHz Antenna B X-Y Plane.

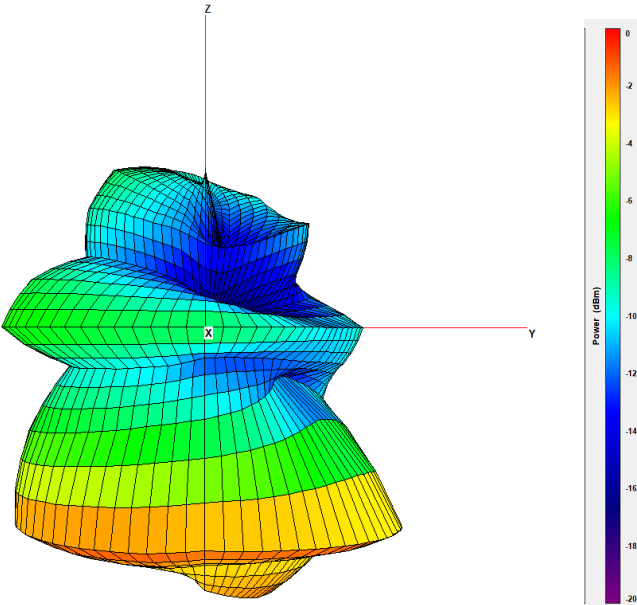


Figure 3-2. 1.9GHz Antenna B Y-Z Plane.

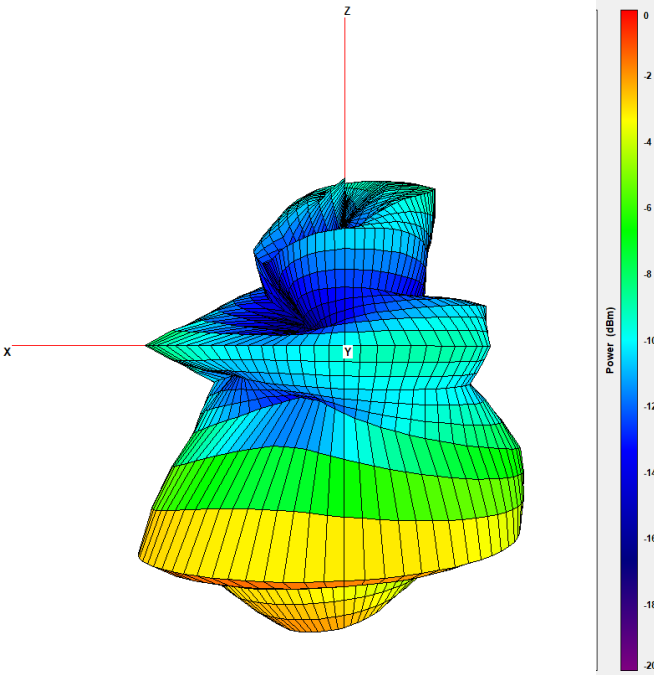


Figure 3-3. 1.9GHz Antenna B X-Z Plane.

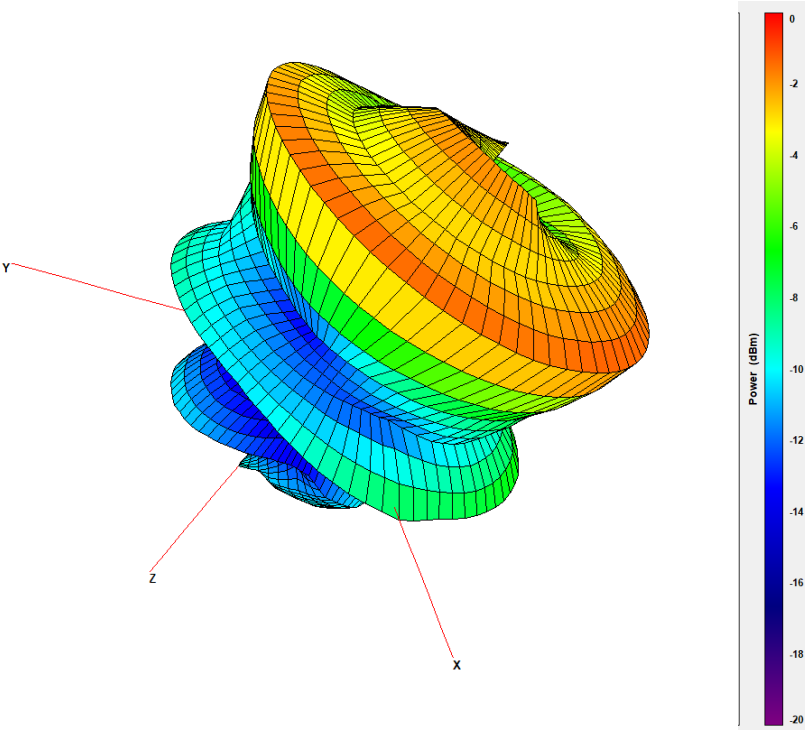


Figure 3-4. 1.9GHz Antenna B 3D



4. 2.4GHz Bluetooth Antenna

Peak Gain					
Parameter	Type	Pattern	2412 MHz	2442 MHz	2482 MHz
2.4GHz Antenna	Internal Chip	Omni	-0.49 dBi	-0.13 dBi	0.32 dBi

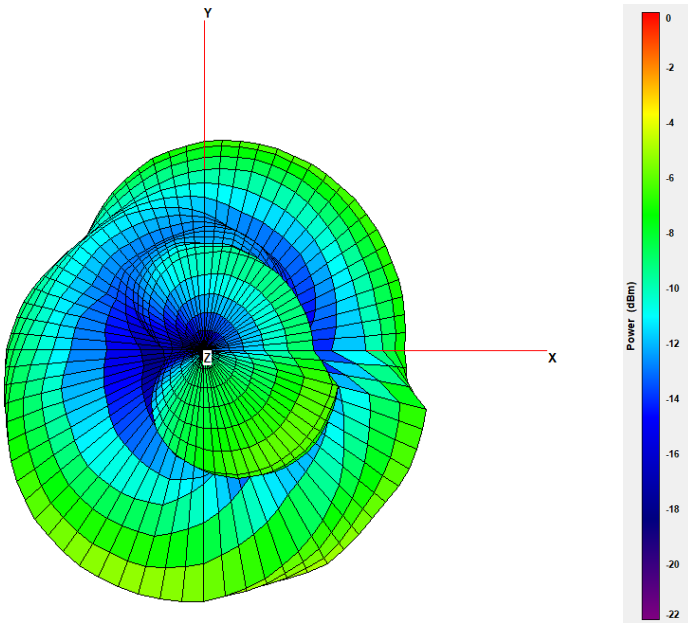


Figure 4-1. 2.4GHz Antenna X-Y plane. 2442MHz.

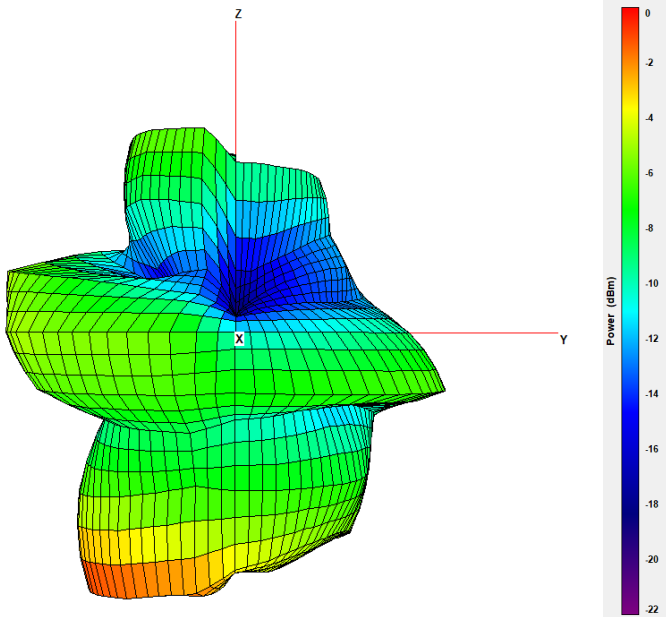


Figure 4-2. 2.4GHz Antenna Y-Z plane. 2442MHz

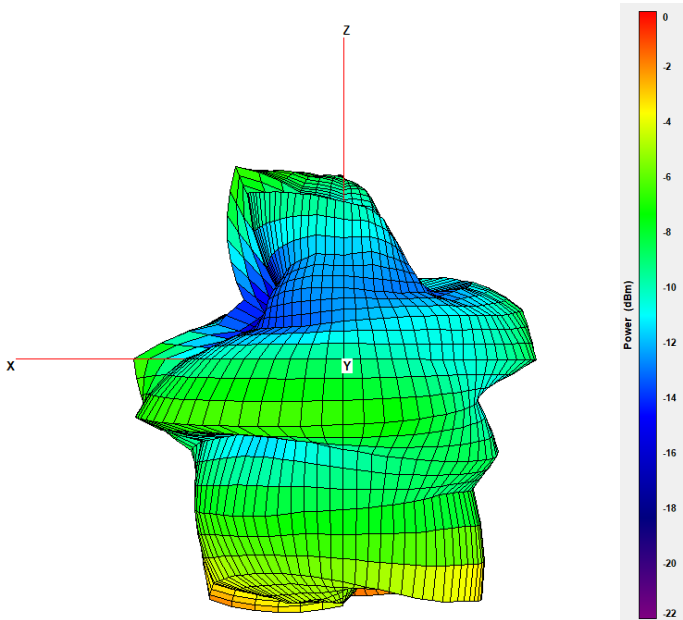


Figure 4-3. 2.4GHz Antenna X-Z plane. 2442MHz

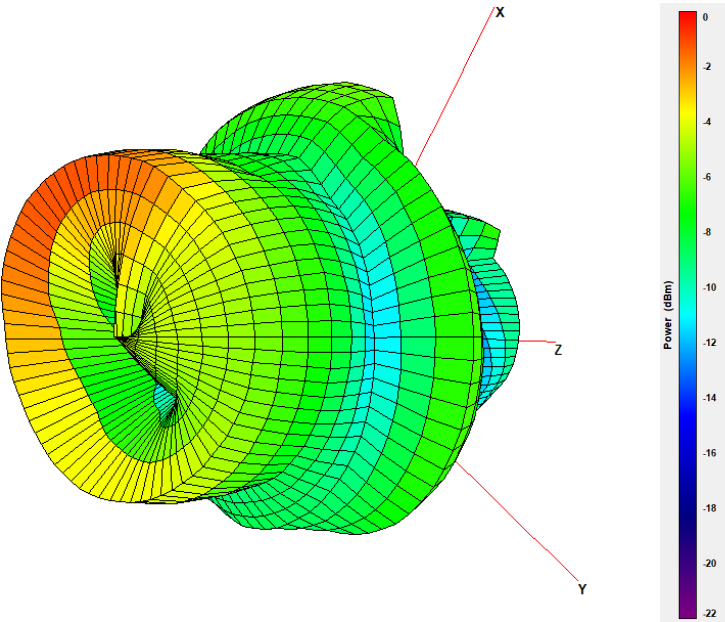


Figure 4-4. 2.4GHz Antenna 3D. 2442MHz