

WIRELESS 1000 Annunciator System



TC-10U DOOR/WINDOW TRANSMITTER

This product is only compatible with Wireless 1000 series.

TC-10U MANUAL

Please read this manual carefully before installation.

FEATURES

- Compatible with RC-10U (Chime Box W/Relay), RG-10U (Single Relay Receiver)
- Can be installed on Door/Window.
- Weather proof structure (IP54) for indoor and outdoor where don't have rain direct.
- Over 8 million codes possible, eliminates interference from neighbors
- Powered by CR123 3-Volt lithium battery (not included)
- Low battery signal
- Two unique functions; the first is for its built-in magnet switch and the second is input terminal for the OPTEX's battery operated detectors.

CAUTION

Please be careful of the following:

1. Outdoor Use

The TC-10U Transmitter is suitable for both indoor and outdoor where don't have rain direct.

2. High Temperature, High Humidity & Dirty Fumes

Do not expose the TC-10U to high temperatures, rapid temperature changes, steam, high humidity, dirty fumes or oily smoke.

3. Transmission range may decrease under following conditions.

- A steel door, reinforced concrete, or other metal obstructions between the TC-10U and the receiver.
- Installing either the TC-10U or the receiver on a metal surface.
- Places near strong radio sources such as a broadcast stations or high power lines.
- To comply with the FCC RF exposure compliance requirements, this device and its antenna must not be co-located or operating in conjunction with any other antenna or transmitter. The changes or modifications not expressly approved by the party responsible for compliance could void the user's authority to operate the equipment.

4. Other Electric Devices

Use the TC-10U at least 3ft (1m) away from following devices: TV, radio, personal Computer, microwave oven, refrigerator, and any device that has an electric motor (This may cause malfunction).

5. Impact/Shock

Do not drop the TC-10U or give it a strong impact/shock.

6. Tampering

The changes or modifications not expressly approved by the party responsible for compliance could void the user's authority to operate the equipment.

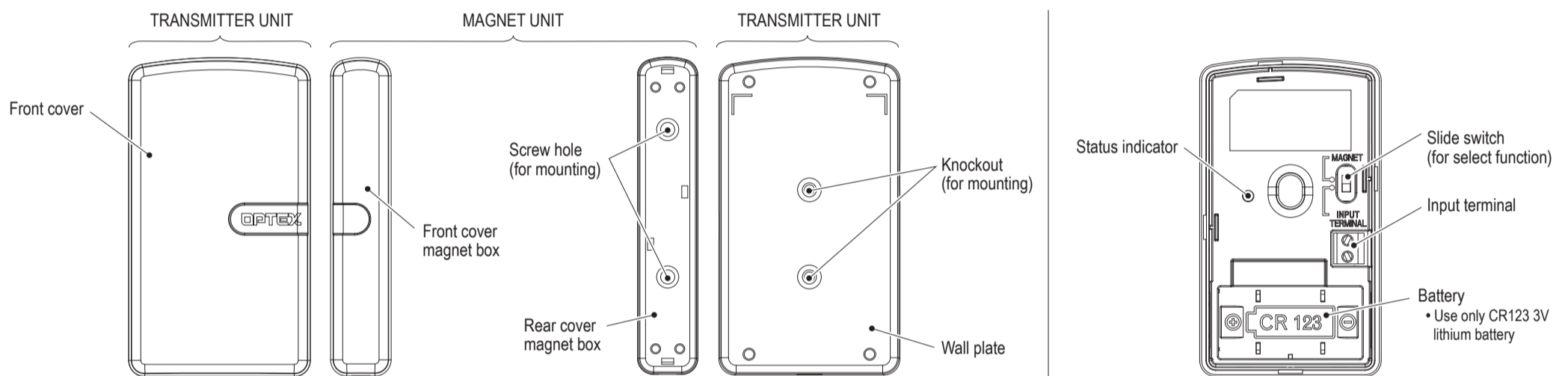
7. Battery Replacement

Replace the battery every 2 years. Use only CR123 3V lithium battery.

8. Cleaning

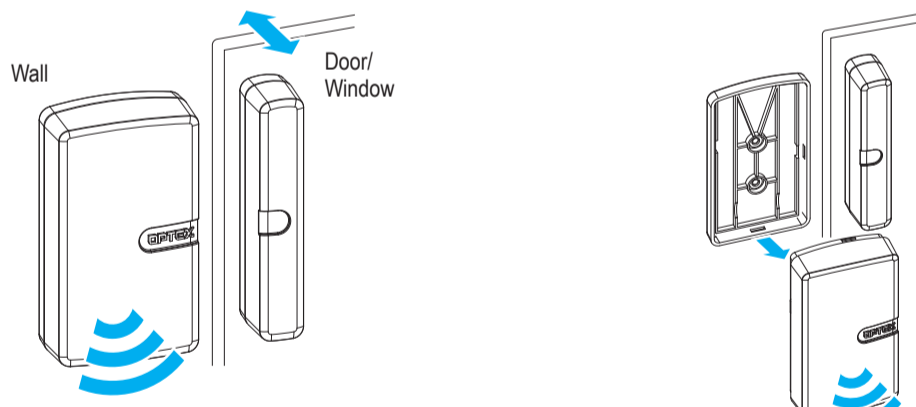
Harsh cleaners such as paint remover or benzene may ruin the surface. Use a soft, wet cloth and mild soap or detergent to clean.

PART IDENTIFICATION



OPERATING CONDITION

It transmits when the door opens or when the transmitter unit is removed from the wall plate.



It transmits when the distance of the magnet unit from the transmitter unit is as shown.



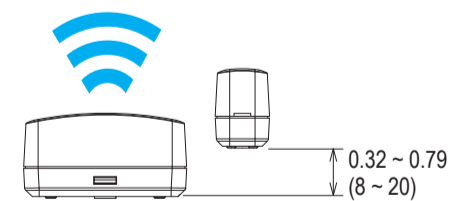
MAXIMUM TRANSMISSION RANGE

TC-10U 700ft. (open field, line of sight.)

Measurements were made over level ground without obstruction. Natural or man-made obstacles and other environmental factors can interfere with or otherwise reduce transmission range. Always confirm actual transmission range during installation of system. Please use the information below as a reference for transmission performance.

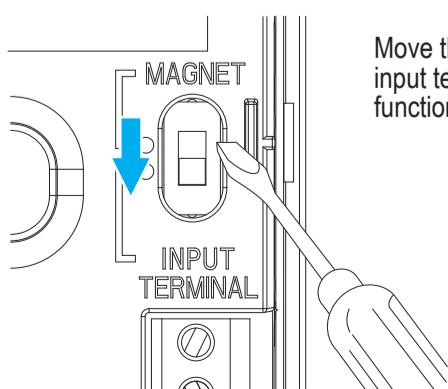
Plaster construction: 110ft

Reinforced concrete construction: 70ft

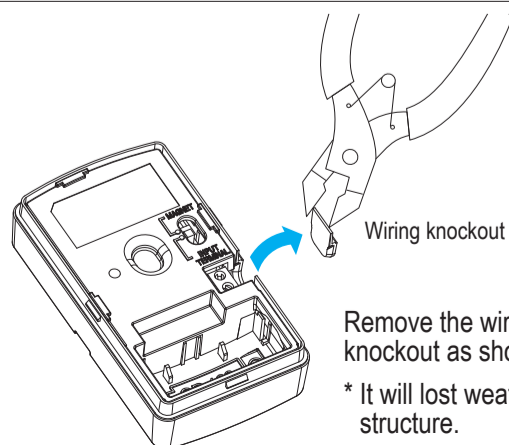


Unit: inches (mm)

When using OPTEX's battery operated detector

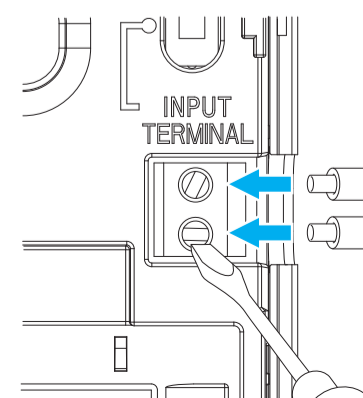


Move the Slide switch to input terminal for change function.



Remove the wiring knockout as shown.

* It will lost weatherproof structure.

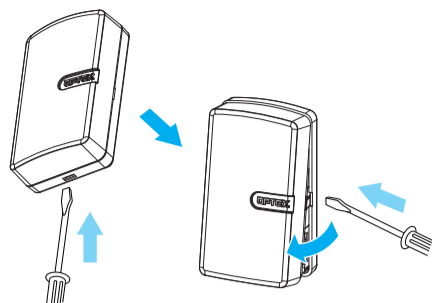


Lead the wire from OPTEX's battery operated detector into the input terminal.

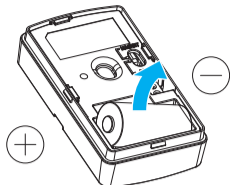
- * Put in these detectors's backbox.
- * About these detectors, please contact your supplier for services.

INSTALLATION BATTERY

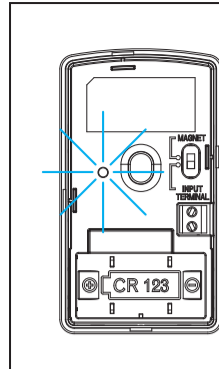
1. Remove the Front cover as shown.



2. Insert batteries. Observe polarity. (+/- direction)



3. To replace the cover. *confirm its closed surely



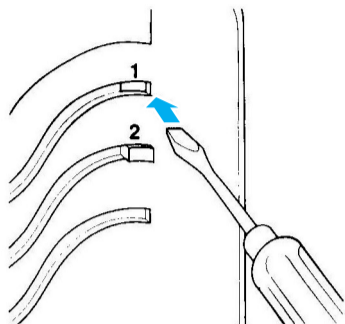
- When the power is low, Status indicator starts flash. Replace the battery in such case.
- Low power may become the cause of false alarm.
- There is no need to readjust the TC-10U nor the receiver after replacing battery.
- Don't throw the battery in the fire because there is the explosion hazard.

TEACH TRANSMITTER CODES TO THE RECEIVER

The receiver must be taught this TC-10U's unique code before use. Refer to the receiver's manual for details.

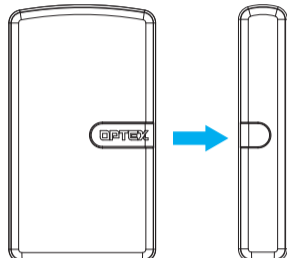
1. Preparation

- Press Switch 1 of the receiver until the power indicator starts flashing.
- Press switch 2 to select the zone you wish to assign to the sensor.



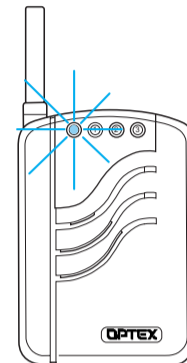
2. Activation

- Separate the magnet unit from transmitter unit.
- Verify that the receiver has learned successfully by observing the zone indicators of the receiver. Zone indicators should have stopped flashing and remain continuously on.



3. Verification

- After teaching all the transmitter's codes (if you have multiple transmitters), return the receiver to normal operating status.
- Make sure that the receiver operates correctly with all the transmitters.

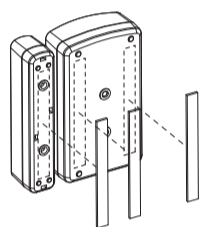


Note:

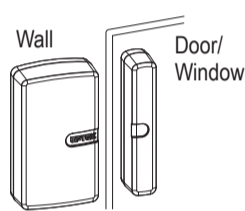
Cover the TC-10U until you are ready to teach the receiver. Unwanted detection can cause the TC-10U to be assigned to the wrong zone and override the data of other transmitters.

INSTALLATION

Double stick tape installation



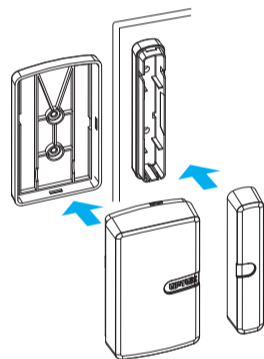
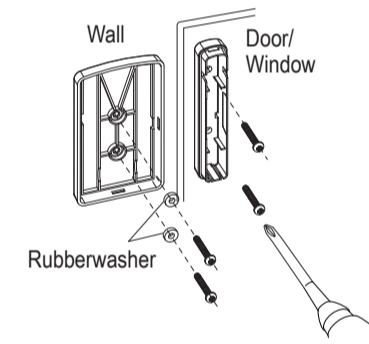
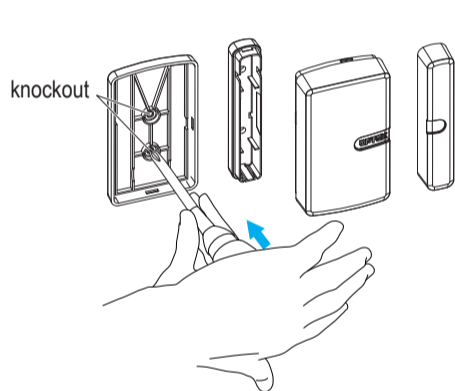
Put the double stick tape as shown.



Clean the installation positions before installing them. Install the transmitter unit on the wall. Install the magnet unit on the door or window.

*Align the magnet unit within 0.2 inch (5 mm).

Screw installation



Install the transmitter unit on the wall with rubber washer and mounting screws (two places). Install the magnet unit on the door or window with mounting screws.

*If it is without rubber washer, it will lost weatherproof structure.

*Align the magnet unit within 0.2 inch (5mm).

TROUBLESHOOTING

1. The system is not operating.

Check the transmitter.

- | | |
|---|---|
| Does the status indicator light up when you remove transmitter unit from wallplate? | → If not, check to see if the battery is inserted correctly. Otherwise try a new battery. |
| Is the status indicator flashing? | → The magnet unit away by enough distance? Please separate it by 0.6 inch (15 mm). |
| | → The battery is old. Replace the battery. |

Check the receiver (or repeater).

- | | |
|--|--|
| Is the power indicator of the receiver lit? | → Is the receiver on? Check the wiring, power switch and connection. |
| The receiver does not respond to the TC-10U. | → The TC-10U is not properly recognized by the receiver. Teach the receiver correctly. |
| The zone indicator of the receiver is on, but nothing happens. | → Receiver has not been properly setup. Refer to the receiver's manual and verify the setting. |
| Is there anything blocking the transmission? | → Relocate the receiver and/or the TC-10U. Metal objects can shorten the effective transmission range. |

2. The system is not operating correctly.

- | | |
|---------------------------------|--|
| It does not transmitting. | → Does it makes between Transmitter unit and Magnet unit within 0.2 inch (5 mm)? |
| | → Is its distance more than transmission range to receiver? Please use repeater. |
| Before contacting the supplier! | → Remove the battery, then reinsert the new batteries and verify the TC-10U's operation again. |

• If the above solutions do not work, please contact your supplier for services.

CONFIRMATION

After installation, door/window open and close. And confirm the receiver weather it is received.

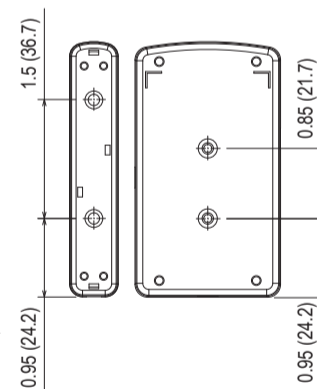
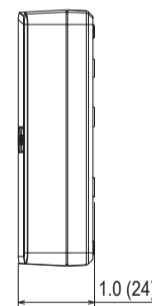
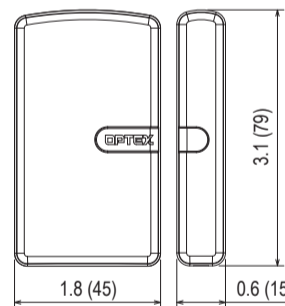
SPECIFICATIONS

| Model | TC-10U |
|-----------------------|---|
| Description | Door/Window Transmitter |
| Status Indicator | Red LED |
| Power Source | 3V:CR123 lithium battery (not include) |
| Battery Life | 2years [100 times per day at 70°F (20°C)] |
| Frequency | 418MHz |
| Input terminal | Our battery operated detector only |
| Operating Temp. | 15°F ~ 120°F (-10°C ~ +50°C) |
| Installation Location | Indoor / Outdoor where don't have rain direct. |
| Accessories | Double stick tape × 3, Screw × 4, Rubber Washer × 2 |
| Weight | 2.5oz (70g) (not included battery) |

Specifications may change without notice

DIMENSIONS

Unit: inches (mm)



LIMITED ONE-YEAR WARRANTY

- (1) This Sensor Transmitter is warranted to the original consumer purchaser to be free from defects in material and workmanship under normal use for one (1) year from the date of purchase. If the product proves to be defective, return it postage prepaid with a copy of your dated sales receipt for repairs or replacement without charge.
- (2) This warranty is in lieu of any and all other warranties, whether expressed or implied, including but not limited to any warranty of merchantability or fitness for a particular purpose.
- (3) This warranty is invalid under the following circumstances:
 - Mechanical or electrical modification(s) are made to the product or it is otherwise altered manually.
 - The product is already been serviced at place(s) other than the manufacturer.
 - It is determined that the product malfunction has resulted from improper use or from an accident.
 - No copy of the dated sales receipt has been submitted together with the product to be serviced.



OPTEX CO., LTD. (JAPAN)
 (ISO 9001 Certified)
 (ISO 14001 Certified)
 5-8-12 Ogoto Otsu
 Shiga 520-0101
 JAPAN
 TEL:+81-77-579-8670
 FAX:+81-77-579-8190
 URL:http://www.optex.co.jp/e/

OPTEX INCORPORATED (USA)
 TEL:+1-909-993-5770
 Tech:(800)966-7839
 URL:http://www.optexamerica.com

OPTEX (EUROPE) LTD. (UK)
 TEL:+44-1628-631000
 URL:http://www.optexeurope.com

OPTEX SECURITY SAS (FRANCE)
 TEL:+33-437-55-50-50
 URL:http://www.optex-security.com

OPTEX SECURITY Sp.z o.o. (POLAND)
 TEL:+48-22-598-06-55
 URL:http://www.optex.com.pl

OPTEX KOREA CO., LTD. (KOREA)
 TEL:+82-2-719-5971
 URL:http://www.optexkorea.com

OPTEX (DONGGUAN) CO., LTD. SHENZHEN OFFICE (CHINA)
 TEL:+86-755-33302950
 URL:http://www.optexchina.com