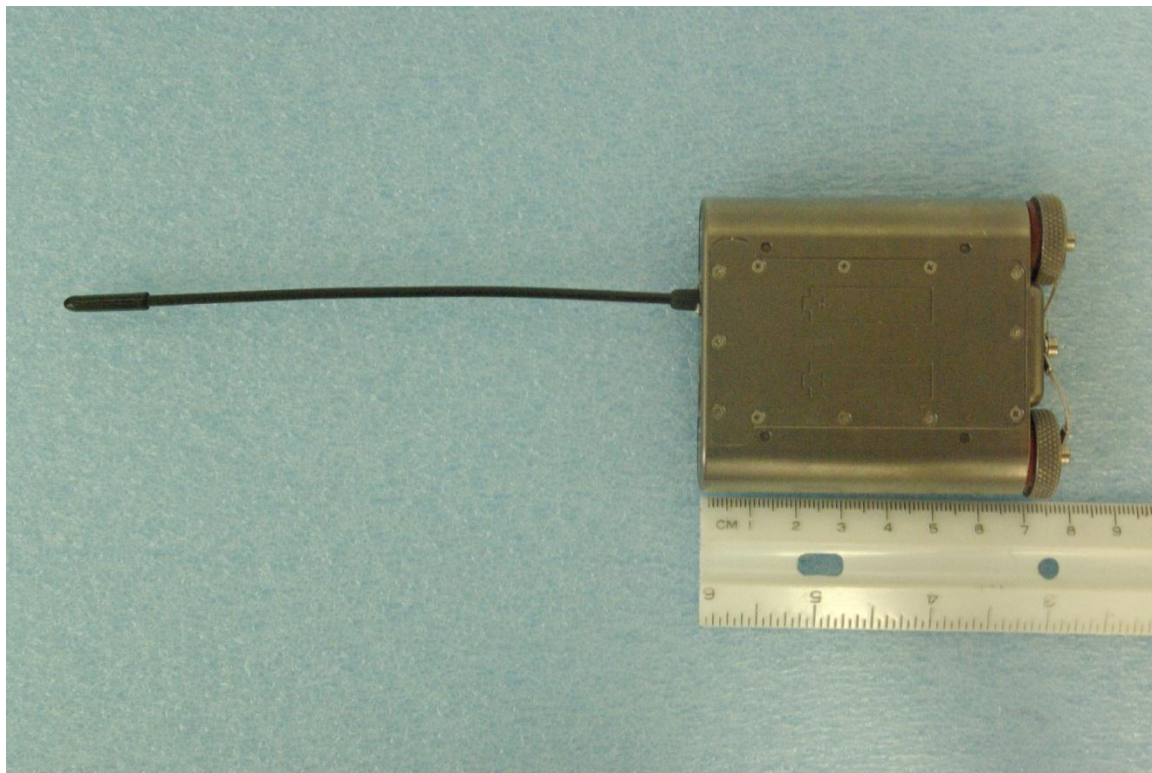
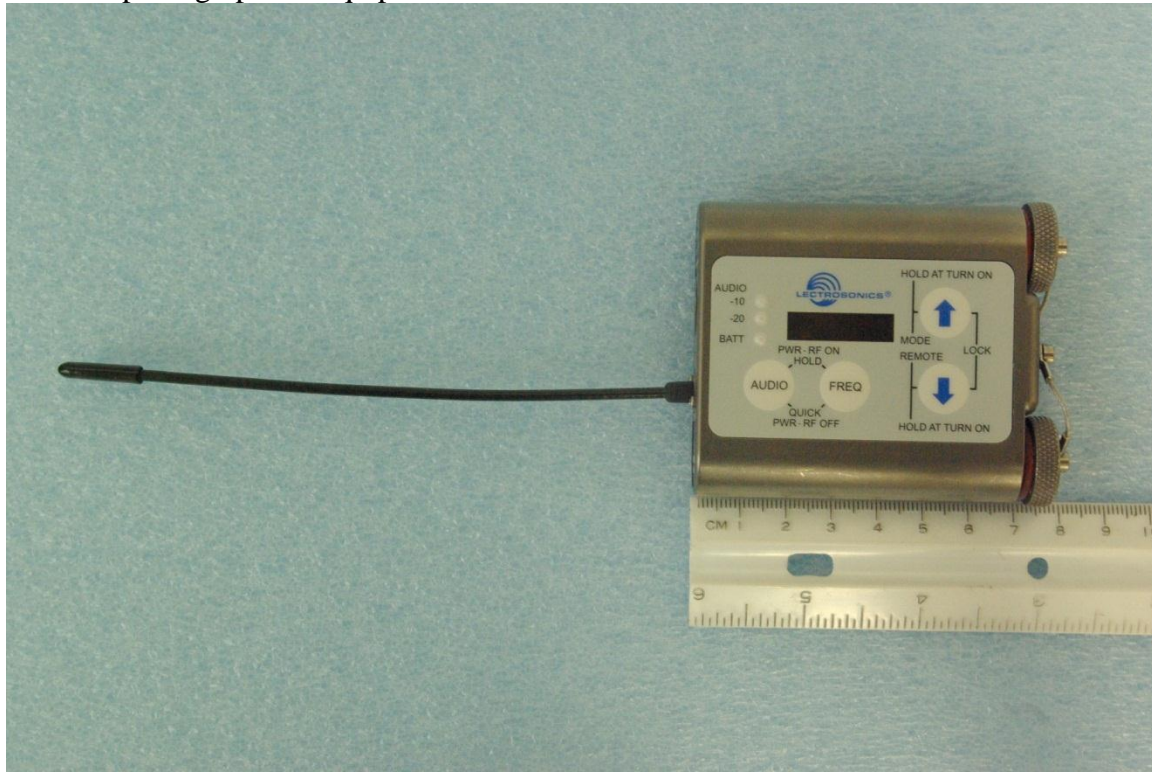


External photographs of equipment under test



Rogers Labs, Inc.  
4405 West 259<sup>TH</sup> Terrace  
Louisburg, KS 66053  
Phone/Fax: (913) 837-3214  
Revision 1

Lectrosonics, Inc.  
Model: WME  
Test #: 120312E  
Test to: CFR47 Parts 2 & 74H, RSS-123, Issue 2  
File: ExtPho WME

IC: 8024A-WME  
FCC ID: DBZWME  
SN: 118, 101, 103  
Date: April 16, 2012  
Page 1 of 2



Rogers Labs, Inc.  
4405 West 259<sup>TH</sup> Terrace  
Louisburg, KS 66053  
Phone/Fax: (913) 837-3214  
Revision 1

Lectrosonics, Inc.  
Model: WME  
Test #: 120312E  
Test to: CFR47 Parts 2 & 74H, RSS-123, Issue 2  
File: ExtPho WME

IC: 8024A-WME  
FCC ID: DBZWME  
SN: 118, 101, 103  
Date: April 16, 2012  
Page 2 of 2