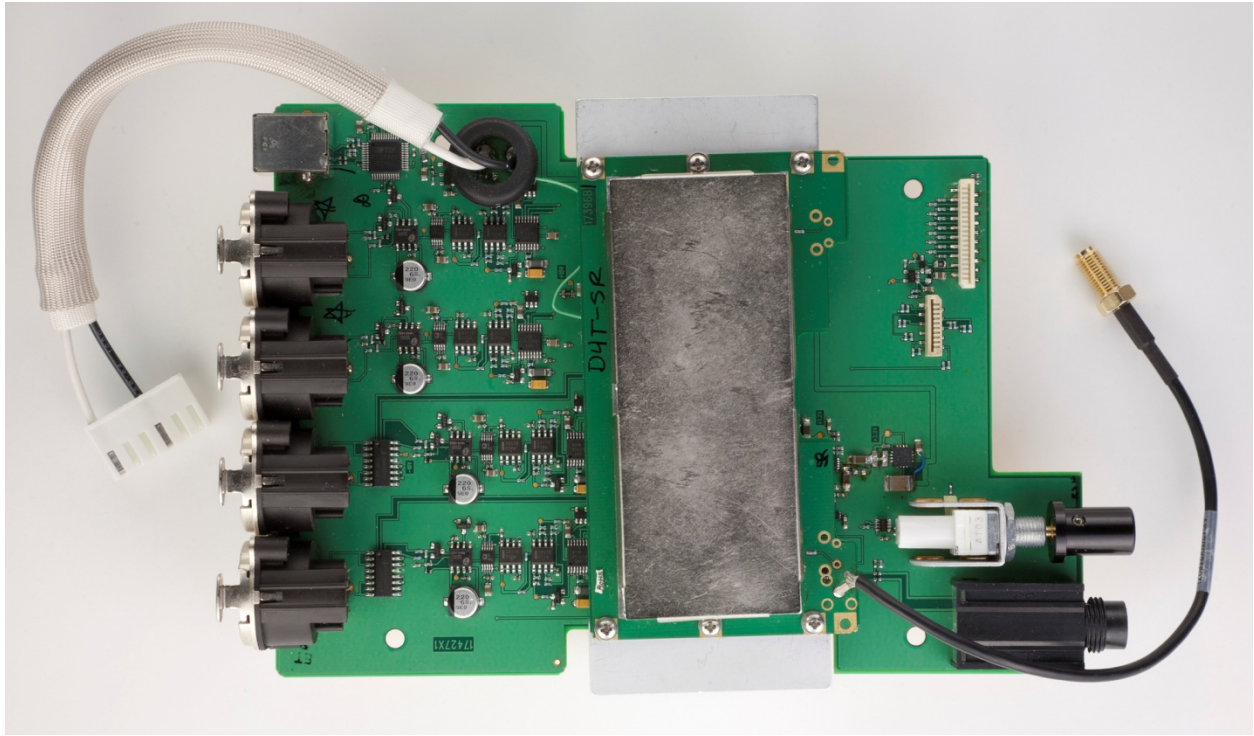
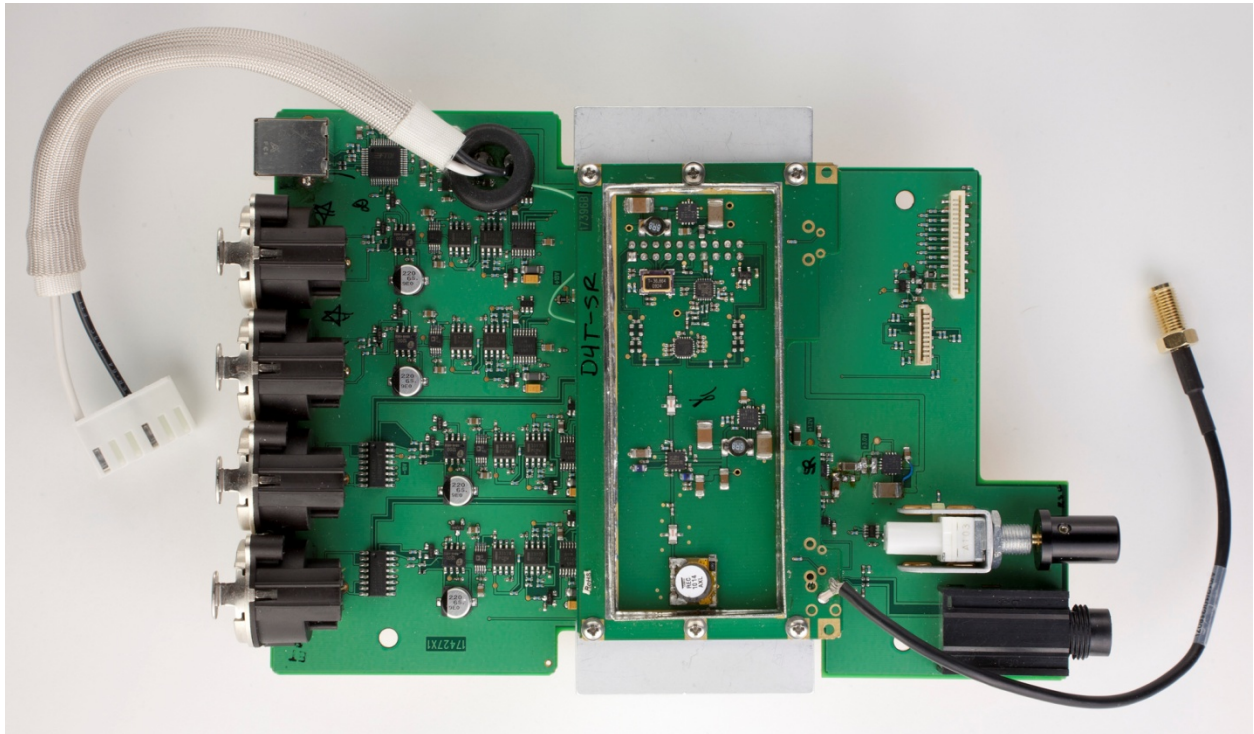


Internal photographs
Main and sub Board with shield and cables



Main and sub Board

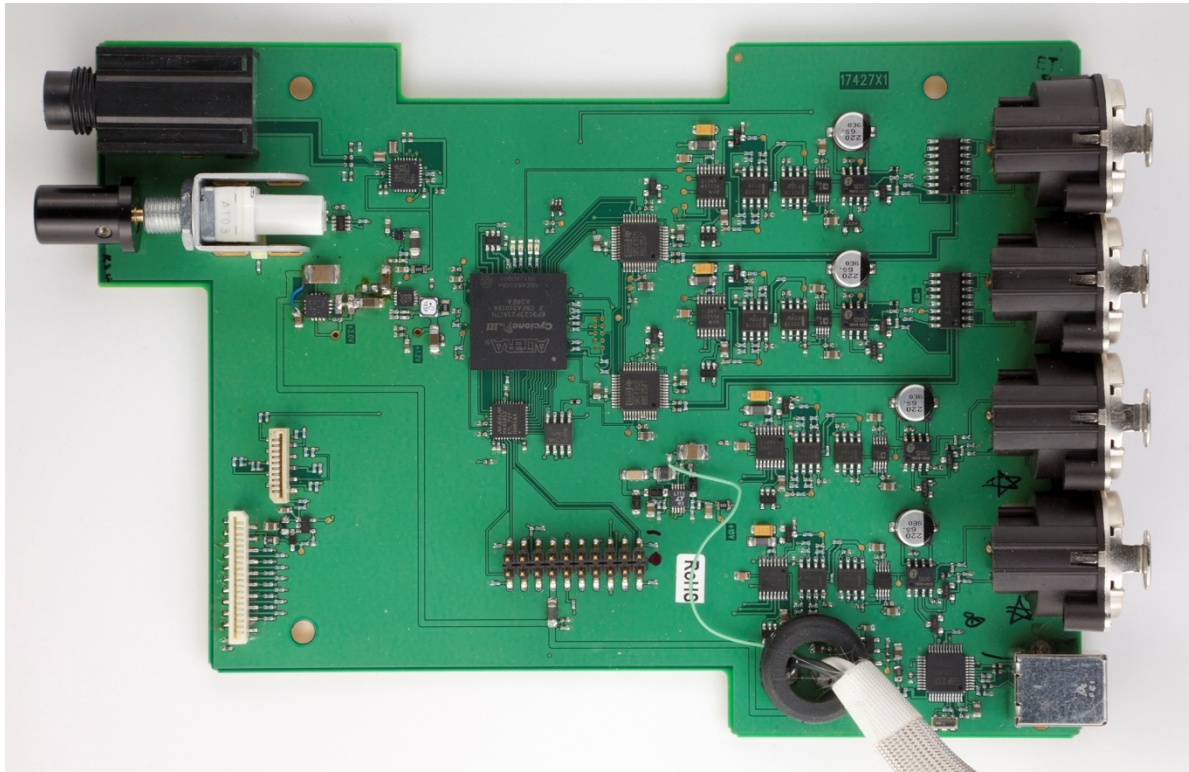


Rogers Labs, Inc.
4405 W. 259th Terrace
Louisburg, KS 66053
Phone/Fax: (913) 837-3214
Revision 1

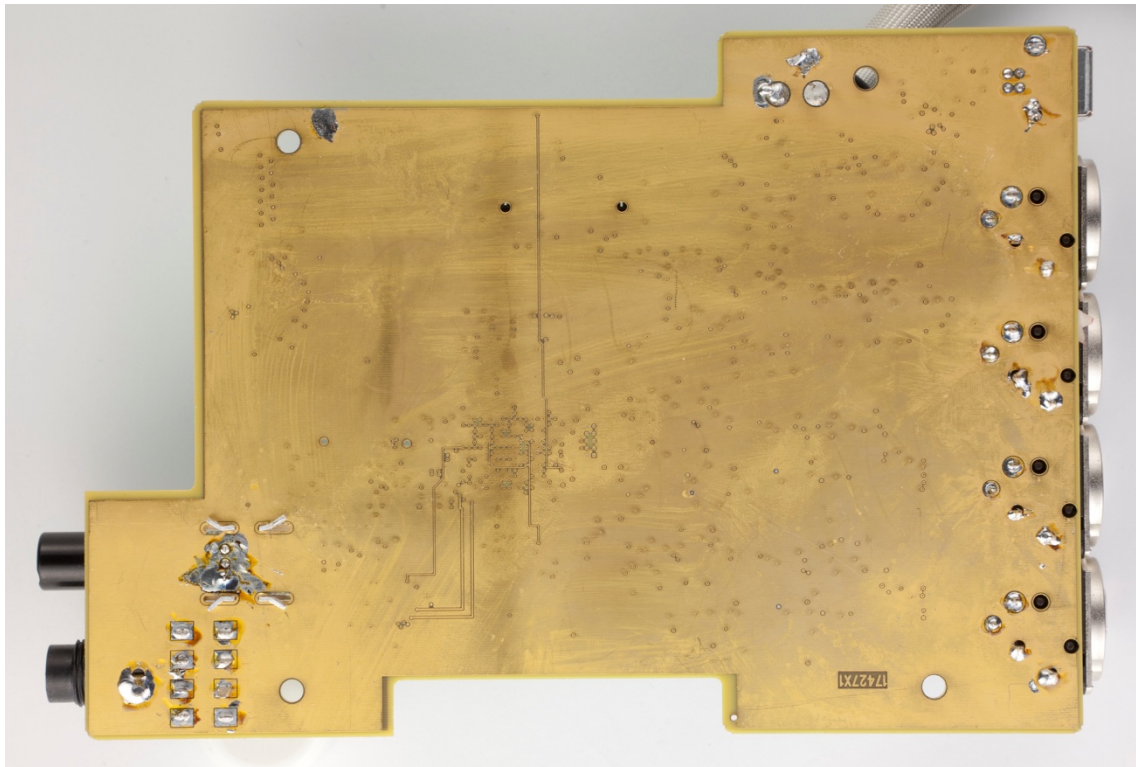
Lectrosonics, Inc.
Model: M4T
Test #: 101116m4t
Test to: CR47 Parts 2 and 15.247, RSS-210
File: Short Term Conf IntPho M4T

SN: 6
FCC ID: DBZM4T
IC: 8024A-M4T
Page 1 of 4
Date: 12/17/2010

Main Board



Main Board

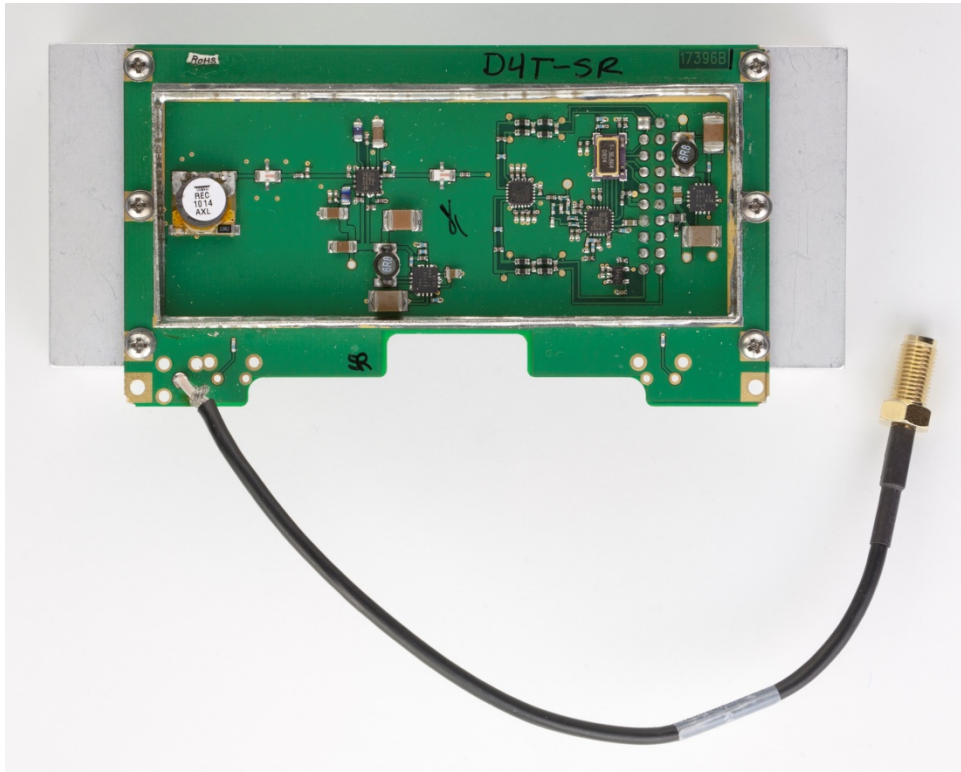


Rogers Labs, Inc.
4405 W. 259th Terrace
Louisburg, KS 66053
Phone/Fax: (913) 837-3214
Revision 1

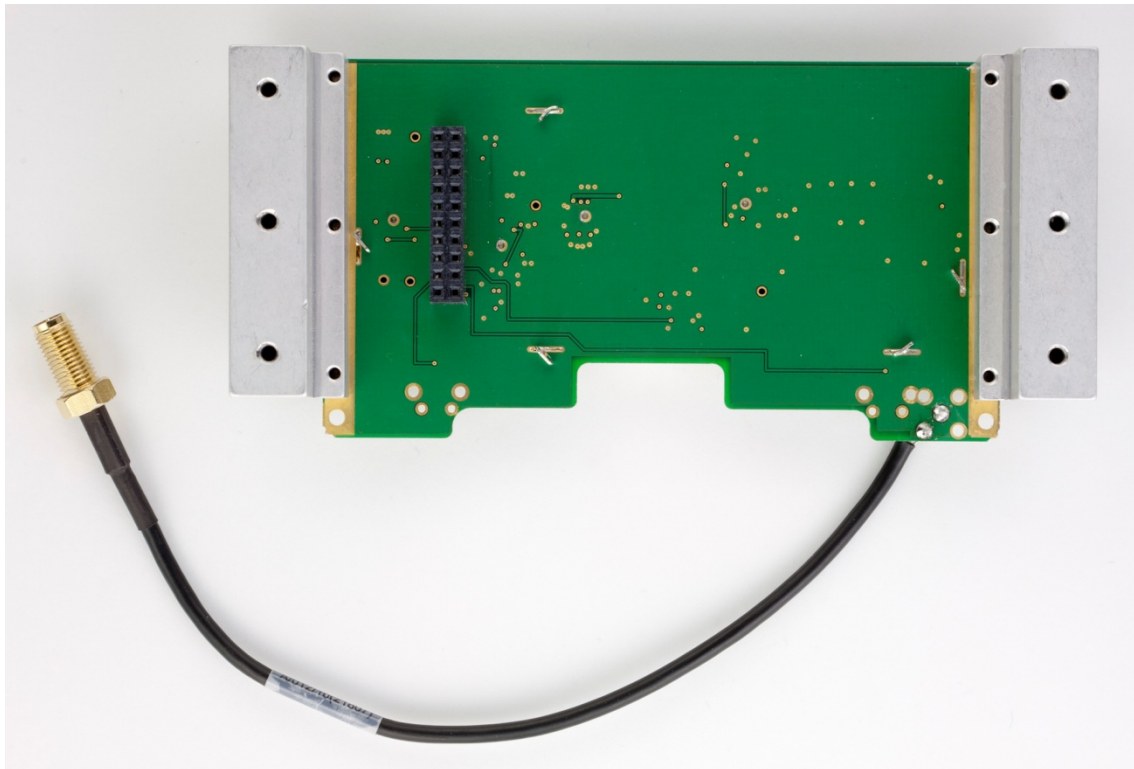
Lectrosonics, Inc.
Model: M4T
Test #: 101116m4t
Test to: CR47 Parts 2 and 15.247, RSS-210
File: Short Term Conf IntPho M4T

SN: 6
FCC ID: DBZM4T
IC: 8024A-M4T
Page 2 of 4
Date: 12/17/2010

Sub Board



Sub Board

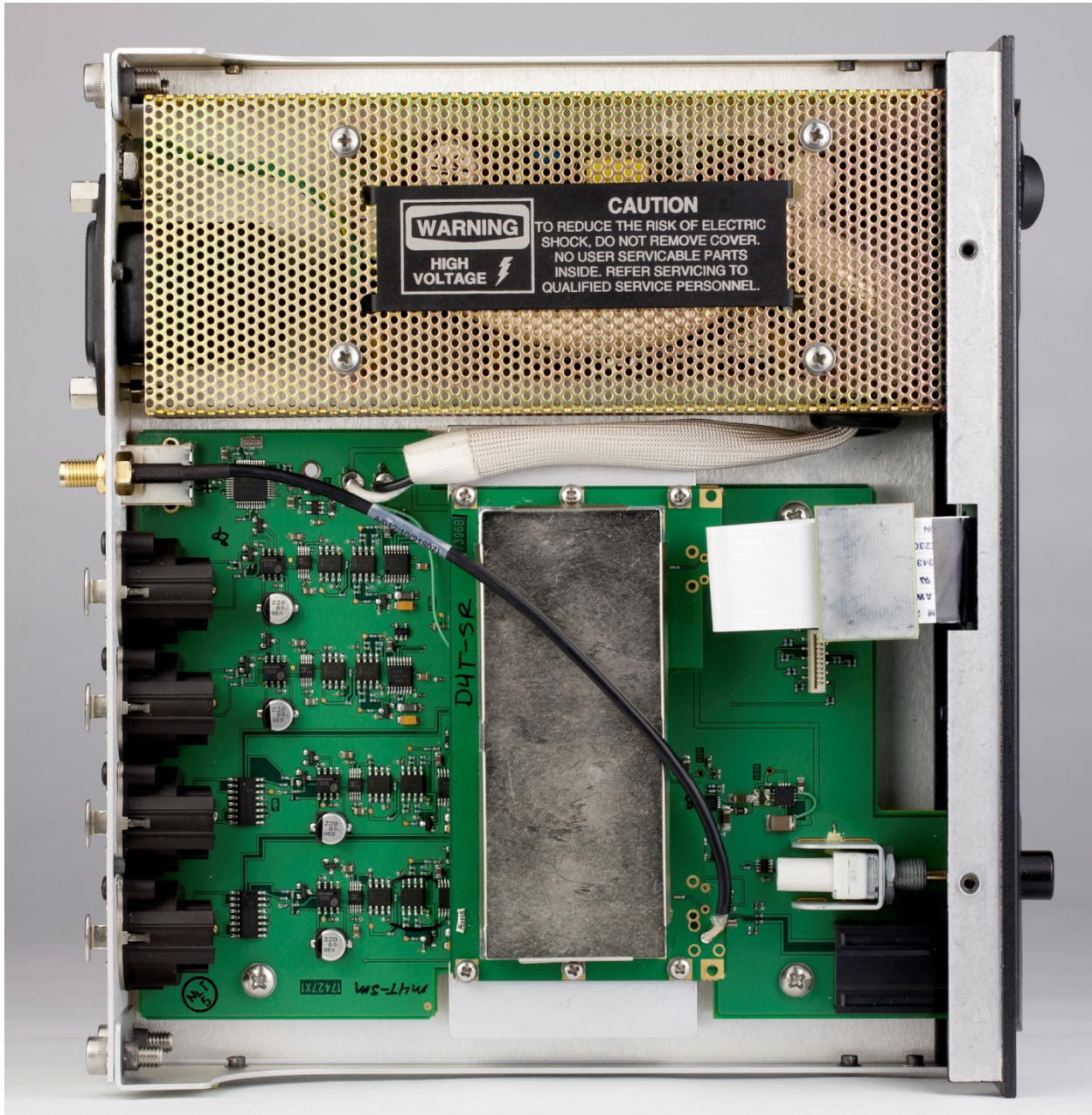


Rogers Labs, Inc.
4405 W. 259th Terrace
Louisburg, KS 66053
Phone/Fax: (913) 837-3214
Revision 1

Lectrosonics, Inc.
Model: M4T
Test #: 101116m4t
Test to: CR47 Parts 2 and 15.247, RSS-210
File: Short Term Conf IntPho M4T

SN: 6
FCC ID: DBZM4T
IC: 8024A-M4T
Page 3 of 4
Date: 12/17/2010

Boards located inside enclosure



Rogers Labs, Inc.
4405 W. 259th Terrace
Louisburg, KS 66053
Phone/Fax: (913) 837-3214
Revision 1

Lectrosonics, Inc.
Model: M4T
Test #: 101116m4t
Test to: CR47 Parts 2 and 15.247, RSS-210
File: Short Term Conf IntPho M4T

SN: 6
FCC ID: DBZM4T
IC: 8024A-M4T
Page 4 of 4
Date: 12/17/2010