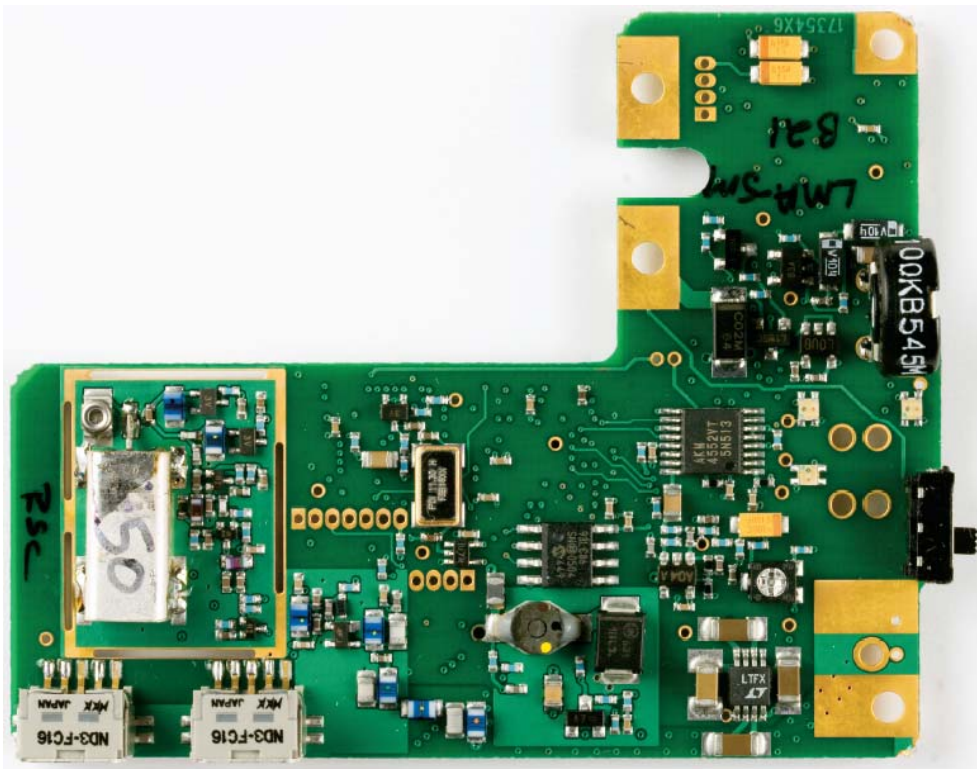
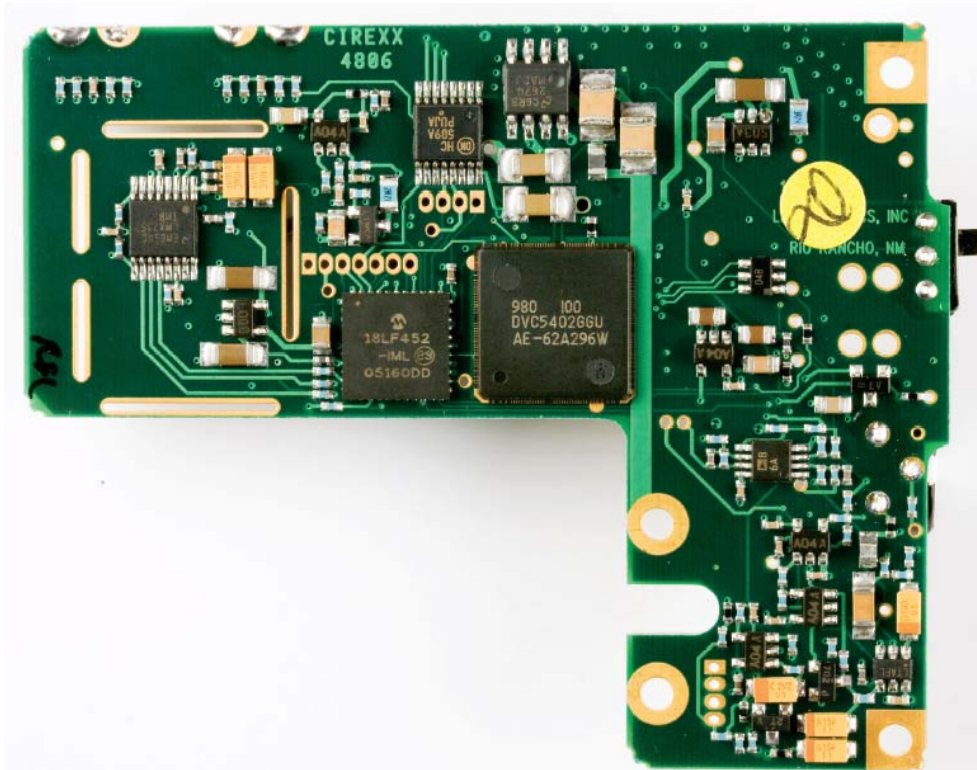


Internal photographs of Printed circuit board for LMAM.



ROGERS LABS, INC.  
4405 W. 259th Terrace  
Louisburg, KS 66053  
Phone/Fax: (913) 837-3214

LectroSonics Inc.  
Model: LMAM  
Test #: 070202M  
Test to: FCC Parts 2 and 74

FCCID#: DBZLMAM  
SN: P479