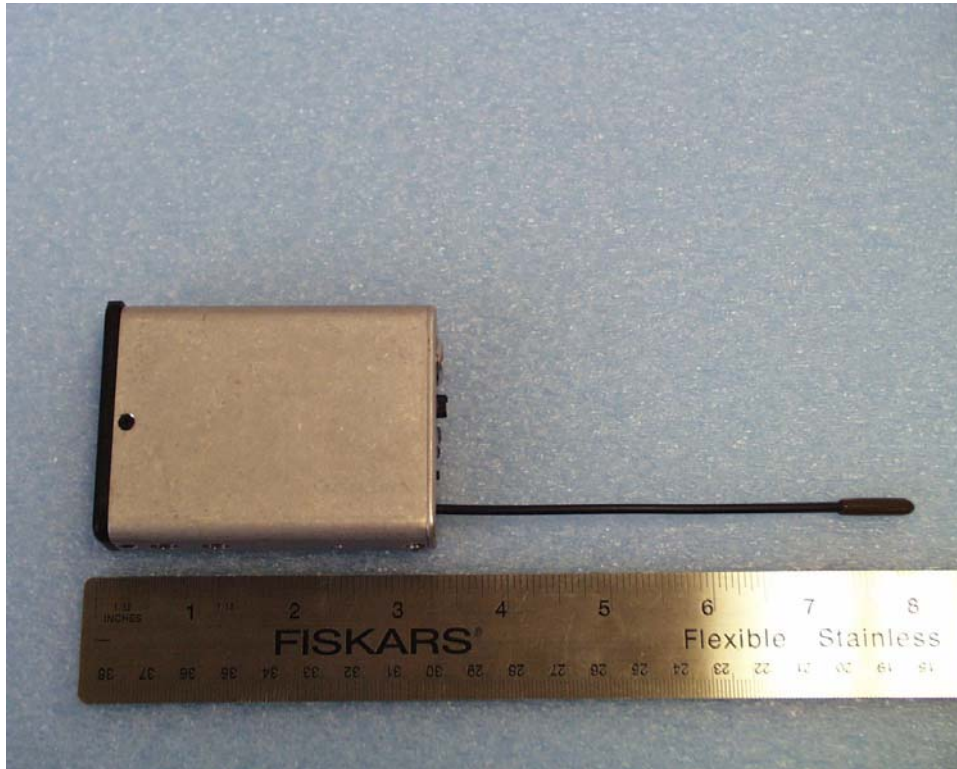


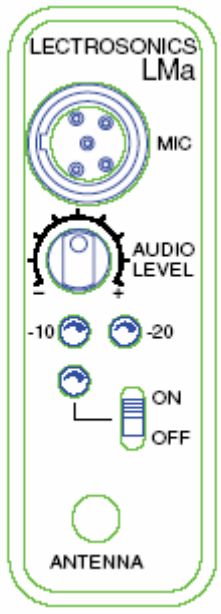
Equipment photographs for LMaL.



ROGERS LABS, INC.
4405 W. 259th Terrace
Louisburg, KS 66053
Phone/Fax: (913) 837-3214

LectroSonics Inc.
Model: LMaL
Test #:070202L
Test to: FCC Parts 2 and 74

FCCID#: DBZLMAL
S/N:P478



ROGERS LABS, INC.
4405 W. 259th Terrace
Louisburg, KS 66053
Phone/Fax: (913) 837-3214

LectroSonic Inc.
Model: LMaL
Test #:070202L
Test to: FCC Parts 2 and 74

FCCID#: DBZLMAL
S/N:P478