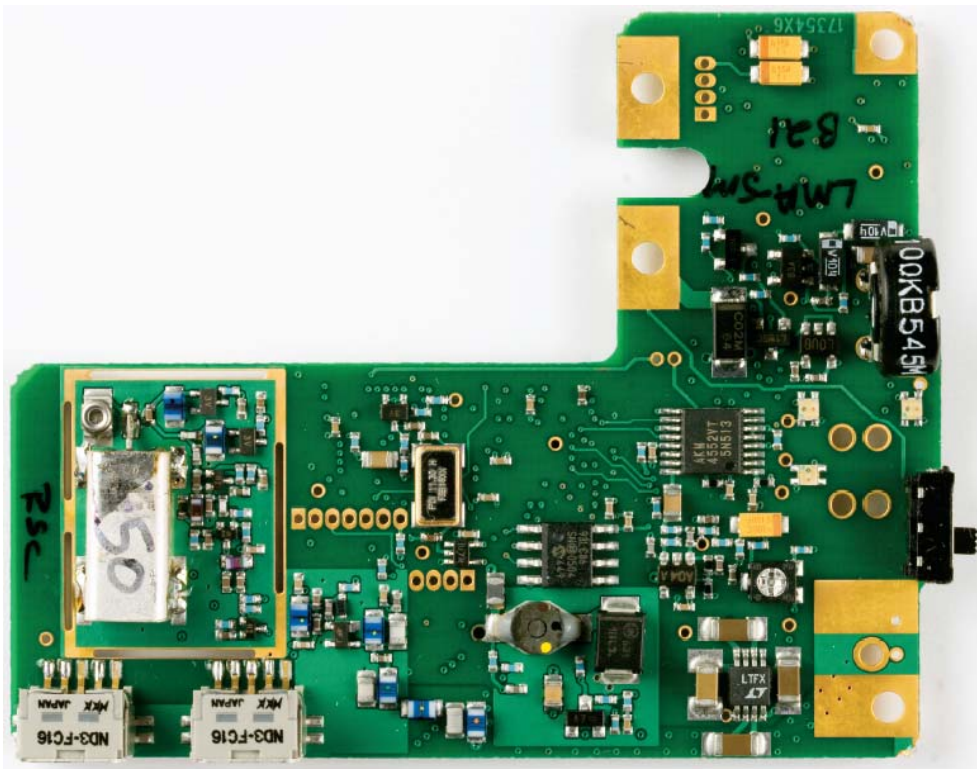
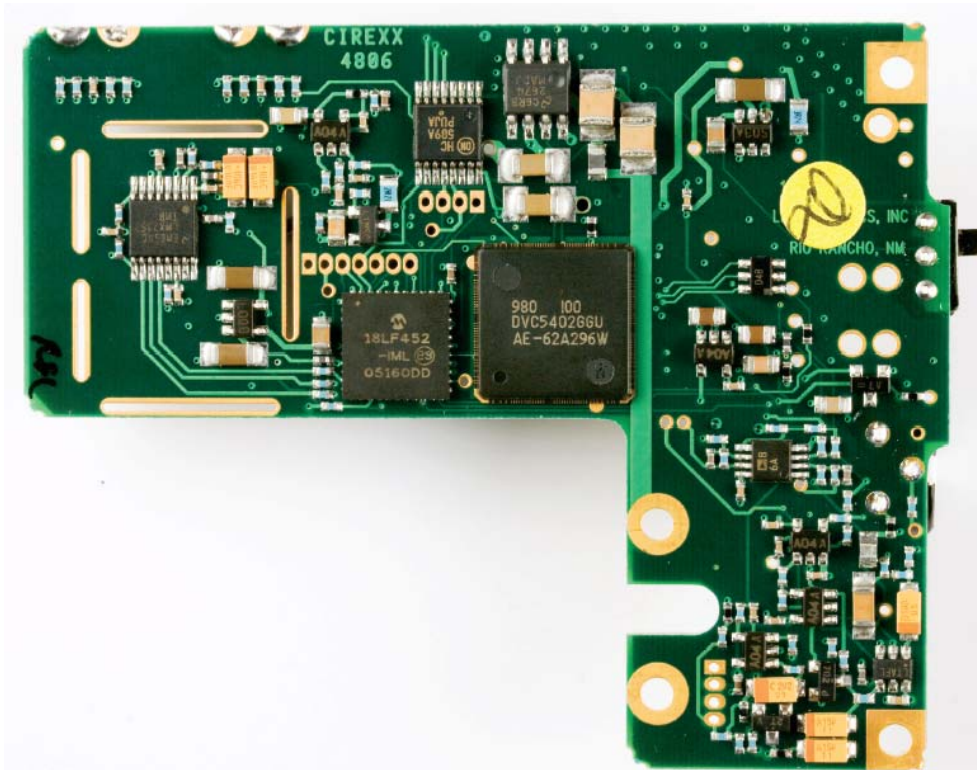


Internal photographs of Printed circuit board for LMAH.



ROGERS LABS, INC.  
4405 W. 259th Terrace  
Louisburg, KS 66053  
Phone/Fax: (913) 837-3214

LectroSonics Inc.  
Model: LMAH  
Test #: 070202H  
Test to: FCC Parts 2 and 74

FCCID#: DBZLMAH  
SN: P480