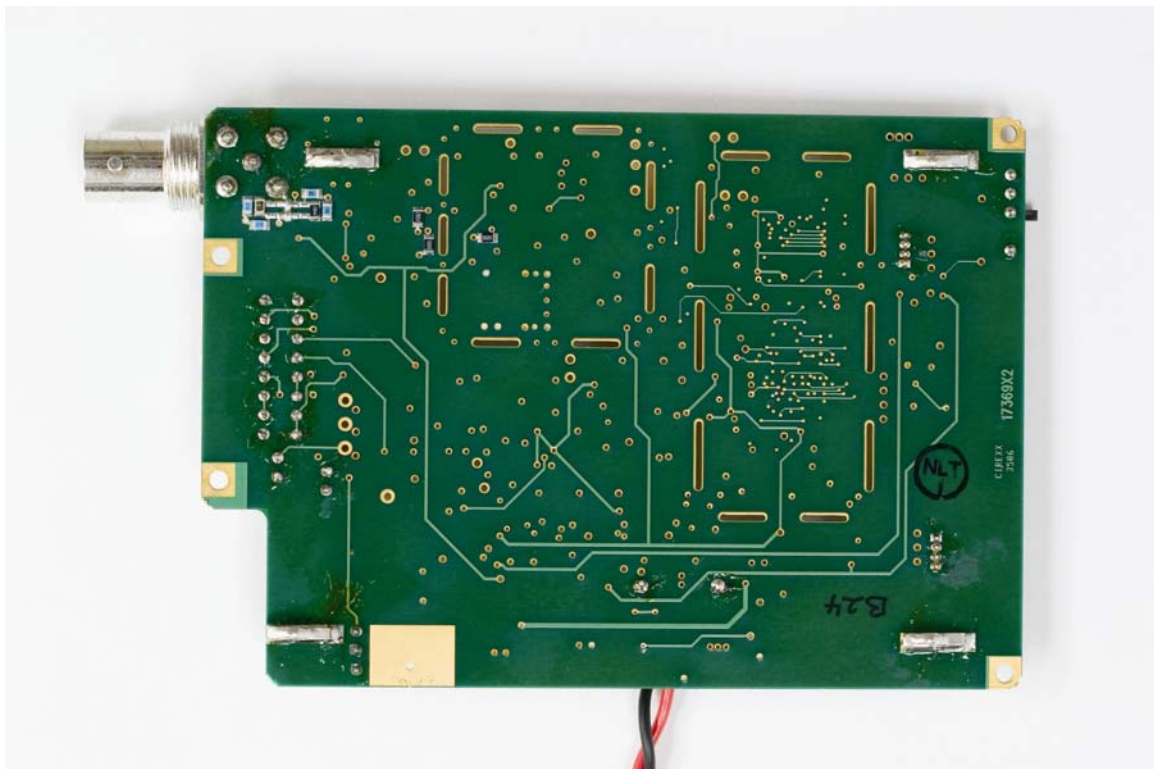


Internal Photographs for IFBT4M



Component side of IFBT4 Transmitter PCB



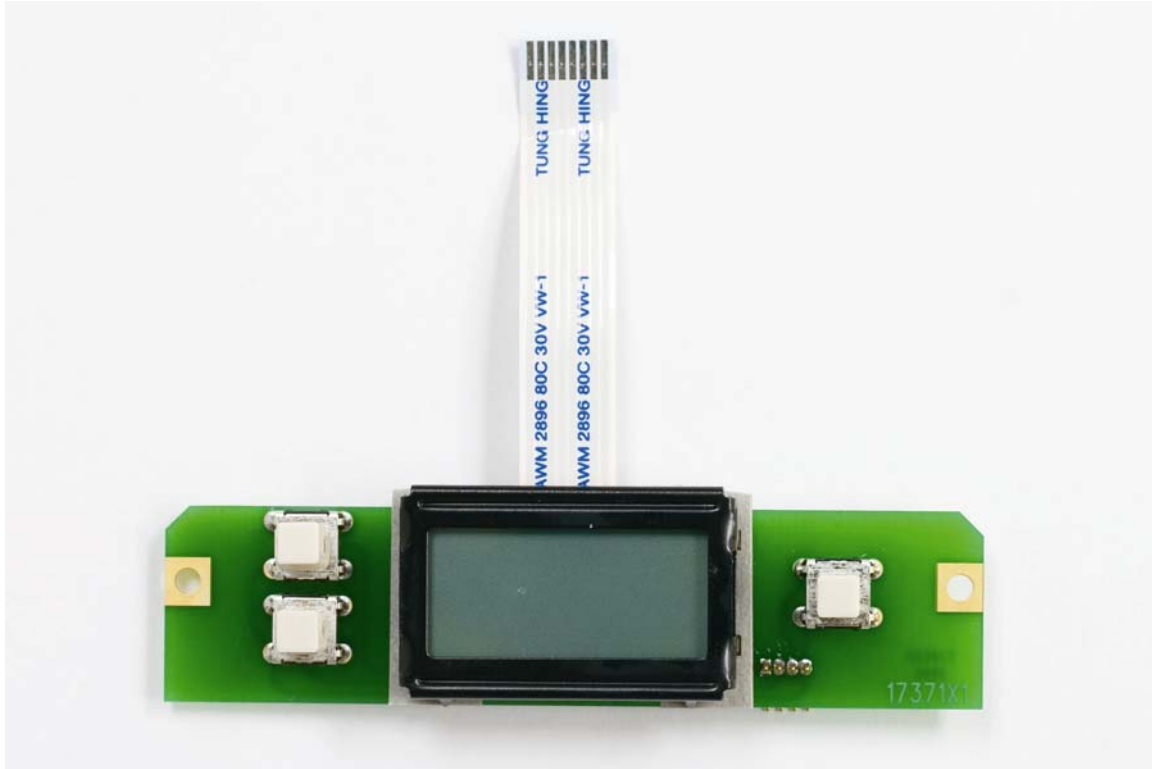
Solder side of IFBT4 Transmitter PCB

ROGERS LABS, INC.  
4405 W. 259th Terrace  
Louisburg, KS 66053  
Phone/Fax: (913) 837-3214

LectroSonics Inc.  
MODEL: IFBT4  
Test #: 061017A  
Test to: FCC Parts 2 and 74

FCCID#: DBZIFBT4M  
S/N:P452

Page 1 of 3



Component side of IFBT4 Display PCB



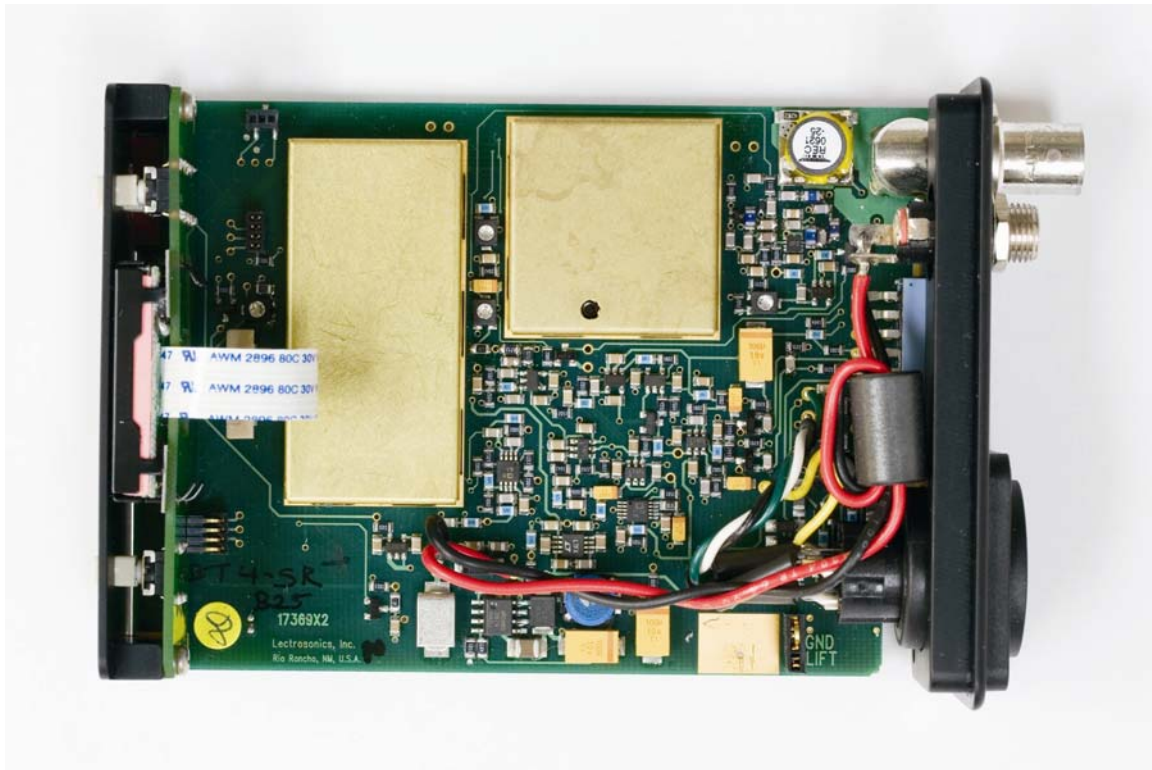
Solder side of IFBT4 Display PCB

ROGERS LABS, INC.  
 4405 W. 259th Terrace  
 Louisburg, KS 66053  
 Phone/Fax: (913) 837-3214

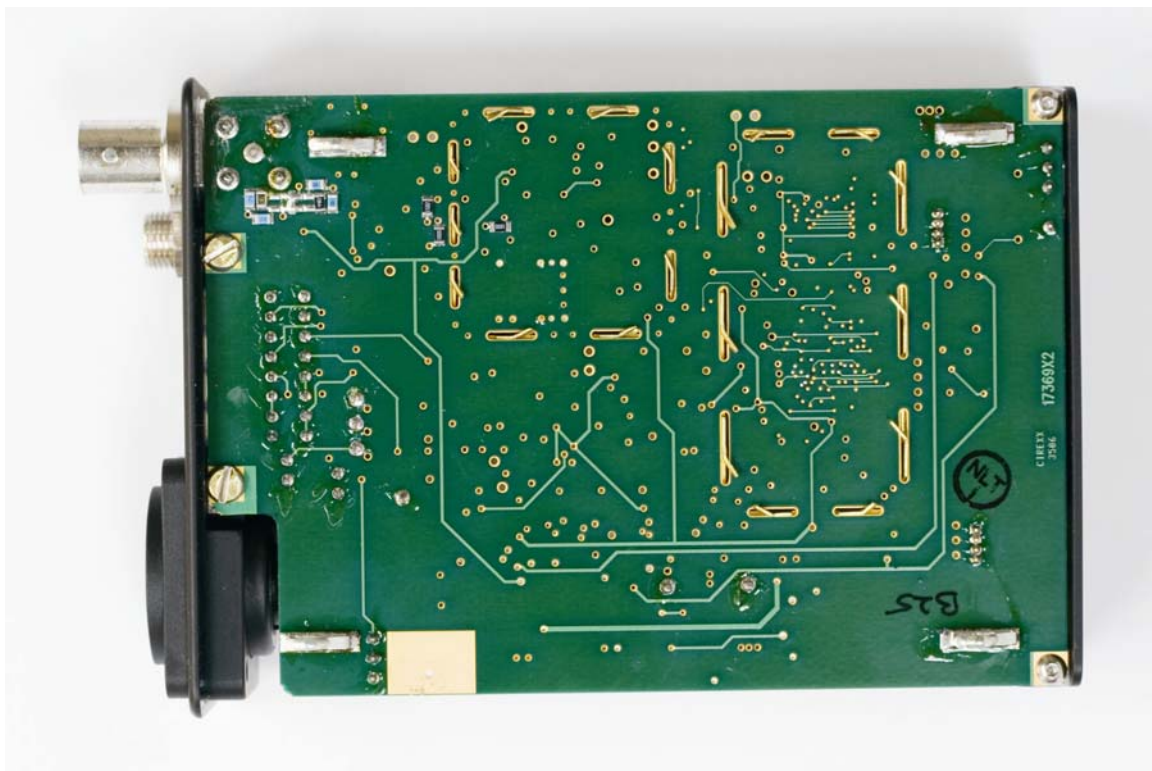
LectroSonics Inc.  
 MODEL: IFBT4  
 Test #: 061017A  
 Test to: FCC Parts 2 and 74

FCCID#: DBZIFBT4M  
 S/N:P452

Page 2 of 3



Assembly of IFBT4 with shields



Assembly of IFBT4

ROGERS LABS, INC.  
4405 W. 259th Terrace  
Louisburg, KS 66053  
Phone/Fax: (913) 837-3214

LectroSonics Inc.  
MODEL: IFBT4  
Test #: 061017A  
Test to: FCC Parts 2 and 74

FCCID#: DBZIFBT4M  
S/N:P452