




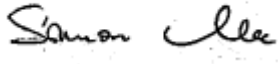
# SAR EVALUATION REPORT

For

## Lectrosonics, Inc.

581 Laser Road NE, P.O. Box 15900,  
Rio Rancho, NM 87124, USA

**FCC ID: DBZHMAB1**  
**IC: 8024A-HMAB1**

<b>Report Type:</b> Original Report	<b>Product Type:</b> Wireless Microphone Transmitter
<b>Prepared By:</b> Jin Yang Test Engineer	
<b>Report Number:</b> R1509257-SAR	
<b>Report Date:</b> 2016-03-11	
<b>Reviewed By:</b> Simon Ma Test Engineer	
Bay Area Compliance Laboratories Corp. 1274 Anvilwood Avenue, Sunnyvale, CA 94089, USA Tel: (408) 732-9162 Fax: (408) 732 9164	

Note: This test report is prepared for the customer shown above and for the device described herein. It may not be duplicated or used in part without prior written consent from Bay Area Compliance Laboratories Corp. This report must not be used by the customer to claim product certification, approval, or endorsement by A2LA\* or any agency of the Federal Government. \* This report may contain data that are not covered by the A2LA accreditation and are marked with an asterisk "\*" (Rev.3)

<b>Summary of Test Results</b>			
Rule Part(s):	FCC §2.1093 IC RSS-102, Issue 5		
Test Procedure(s):	FCC KDB 447498 D01; RSS-102 Issue 5; FCC KDB 702432		
Device Category: Exposure Category:	General Population/Uncontrolled Exposure		
Device Type:	Portable Device		
Modulation Type:	FM		
TX Frequency Range:	537.6-608 MHz & 614-614.375 MHz		
Maximum Conducted Power Tested:	19.90 dBm		
Antenna Type(s) Tested:	External Antenna		
Body-Worn Accessories:	Pouch		
Face-Head Accessories:	None		
Battery Type (s) Tested:	Two AA Batteries		
Max. SAR Level (s) Measured:	<b>Configuration</b>	<b>Position</b>	<b>Level (W/Kg)</b>
	Body-worn	Belt Clip Back Side Touch	0.085
	Hand-held	Right Side Touch	0.40

## TABLE OF CONTENTS

<b>1</b>	<b>GENERAL DESCRIPTION .....</b>	<b>6</b>
1.1	PRODUCT DESCRIPTION FOR EQUIPMENT UNDER TEST (EUT).....	6
1.2	EUT TECHNICAL SPECIFICATION .....	6
<b>2</b>	<b>TEST FACILITY.....</b>	<b>7</b>
<b>3</b>	<b>REFERENCE, STANDARDS AND GUIDELINES.....</b>	<b>9</b>
3.1	SAR LIMITS.....	10
<b>4</b>	<b>EQUIPMENT LIST AND CALIBRATION.....</b>	<b>11</b>
4.1	EQUIPMENT LIST & CALIBRATION INFO.....	11
<b>5</b>	<b>SAR MEASUREMENT SYSTEM VERIFICATION .....</b>	<b>12</b>
5.1	SYSTEM ACCURACY VERIFICATION.....	12
5.2	SYSTEM SETUP BLOCK DIAGRAM.....	12
5.3	LIQUID AND SYSTEM VALIDATION.....	13
<b>6</b>	<b>EUT TEST STRATEGY AND METHODOLOGY.....</b>	<b>14</b>
6.1	TEST POSITIONS FOR DEVICE OPERATING NEXT TO A PERSON’S EAR.....	14
6.2	CHEEK/TOUCH POSITION .....	15
6.3	EAR/TILT POSITION.....	15
6.4	TEST POSITIONS FOR BODY-WORN AND OTHER CONFIGURATIONS .....	17
6.5	SAR EVALUATION PROCEDURE.....	18
6.6	TEST METHODOLOGY .....	18
<b>7</b>	<b>DASY4 SAR EVALUATION PROCEDURE .....</b>	<b>19</b>
7.1	POWER REFERENCE MEASUREMENT.....	19
7.2	AREA SCAN.....	19
7.3	ZOOM SCAN.....	20
7.4	POWER DRIFT MEASUREMENT .....	20
7.5	Z-SCAN.....	20
<b>8</b>	<b>DESCRIPTION OF TEST SYSTEM.....</b>	<b>21</b>
8.1	IEEE SCC-34/SC-2 P1528 RECOMMENDED TISSUE DIELECTRIC PARAMETERS.....	22
8.2	MEASUREMENT SYSTEM DIAGRAM .....	22
8.3	SYSTEM COMPONENTS.....	23
<b>9</b>	<b>SAR MEASUREMENT CONSIDERATION AND REDUCTION.....</b>	<b>31</b>
9.1	SAR CONSIDERATION.....	31
9.2	SAR REDUCTION .....	32
<b>10</b>	<b>SAR MEASUREMENT RESULTS .....</b>	<b>34</b>
10.1	TEST ENVIRONMENTAL CONDITIONS.....	34
10.2	TEST RESULTS .....	34
<b>11</b>	<b>APPENDIX A – MEASUREMENT UNCERTAINTY.....</b>	<b>36</b>
<b>12</b>	<b>APPENDIX B – PROBE CALIBRATION CERTIFICATES .....</b>	<b>37</b>
<b>12</b>	<b>APPENDIX C – DIPOLE CALIBRATION CERTIFICATES .....</b>	<b>48</b>
<b>13</b>	<b>APPENDIX D - TEST SYSTEM VERIFICATIONS SCANS.....</b>	<b>56</b>

<b>14</b>	<b>APPENDIX E - EUT SCAN RESULTS.....</b>	<b>57</b>
<b>15</b>	<b>APPENDIX F- CONDUCTED OUTPUT POWER MEASUREMENT.....</b>	<b>66</b>
15.1	TEST BLOCK DIAGRAM AND PROCEDURE .....	66
15.2	CONDUCTED OUTPUT POWER .....	66
<b>16</b>	<b>APPENDIX G – TEST SETUP PHOTOS .....</b>	<b>67</b>
16.1	BELT CLIP BACK TOUCH TO THE FLAT PHANTOM .....	67
16.2	CONFIGURATION A TOUCH TO THE FLAT PHANTOM .....	67
16.3	CONFIGURATION B TOUCH TO THE FLAT PHANTOM.....	68
<b>17</b>	<b>APPENDIX H – EUT PHOTOS.....</b>	<b>69</b>
17.1	EUT-FRONT VIEW .....	69
17.2	EUT-REAR VIEW .....	69
17.3	EUT-RIGHT SIDE VIEW .....	70
17.4	EUT-LEFT SIDE VIEW .....	70
17.5	EUT-TOP SIDE VIEW .....	71
17.6	EUT-BOTTOM SIDE VIEW.....	71
17.7	MCA-TPOWER CABLE ADAPTER .....	72
17.8	MICROPHONE.....	72
17.9	HMA AUDIO LOGIC TOP VIEW.....	73
17.10	HMA AUDIO LOGIC BOTTOM VIEW .....	73
17.11	HMA B1 RADIO TOP VIEW .....	74
17.12	HMA B1 RADIO BOTTOM VIEW.....	74
<b>18</b>	<b>APPENDIX I - INFORMATIVE REFERENCES .....</b>	<b>75</b>

**DOCUMENT REVISION HISTORY**

<b>Revision Number</b>	<b>Report Number</b>	<b>Description of Revision</b>	<b>Date of Revision</b>
0	R1509257-SAR	Original Report	2016-03-11

# 1 General Description

---

## 1.1 Product Description for Equipment under Test (EUT)

This test and measurement report was prepared on behalf of *Lectrosonics Inc.*, and their product, FCC ID: DBZHMAB1, IC: 8024A-HMAB1, model: *HMA-B1*, or the "EUT" as referred to in this report, is a Wireless Microphone Transmitter.

## 1.2 EUT Technical Specification

Item	Description
Modulation	FM
Frequency Range	537.6-608 MHz and 614-614.375 MHz
Maximum conducted power	19.90 dBm
Dimensions (L*W*H)	10.8 cm (L) x 4.1 cm (W) x 3.5 cm (H)
Power Source	Two AA Batteries
Weight	0.211 kg
Normal Operation	Body-worn, Hand-held

The test data gathered are from typical production sample, serial number: 2 provided by manufacturer.

## 2 Test Facility

---

Bay area compliance Laboratories Corp. (BACL) is:

1- An independent Commercial Test Laboratory accredited to **ISO 17025: 2005** by **A2LA**, in the fields of: Electromagnetic Compatibility & Telecommunications covering Emissions, Immunity, Radio, RF Exposure, Safety and Telecom. This includes NEBS (Network Equipment Building System), Wireless RF, Telecommunications Terminal Equipment (TTE); Network Equipment; Information Technology Equipment (ITE); Medical Electrical Equipment; Industrial, Commercial, and Medical Test Equipment; Professional Audio and Video Equipment; Electronic (Digital) Products; Industrial and Scientific Instruments; Cabled Distribution Systems and Energy Efficiency Lighting.

2- An ENERGY STAR Recognized Laboratory, for the LM80 Testing, a wide variety of Luminaires and Computers.

3- A NIST Designated Phase-I and Phase-II CAB including: ACMA (Australian Communication and Media Authority), BSMI (Bureau of Standards, Metrology and Inspection of Taiwan), IDA (Infocomm Development Authority of Singapore), IC(Industry Canada), Korea (Ministry of Communications Radio Research Laboratory), NCC (Formerly DGT; Directorate General of Telecommunication of Chinese Taipei) OFTA (Office of the Telecommunications Authority of Hong Kong), Vietnam, VCCI - Voluntary Control Council for Interference of Japan and a designated EU CAB (Conformity Assessment Body) (Notified Body) for the EMC and R&TTE Directives.

4- A Product Certification Body accredited to **ISO Guide 65: 1996** by **A2LA** to certify:

- 1- Unlicensed, Licensed radio frequency devices and Telephone Terminal Equipment for the FCC. Scope A1, A2, A3, A4, B1, B2, B3, B4 & C.
2. Radio Standards Specifications (RSS) in the Category I Equipment Standards List and All Broadcasting Technical Standards (BETS) in Category I Equipment Standards List for Industry Canada.
3. Radio Communication Equipment for Singapore.
4. Radio Equipment Specifications, GMDSS Marine Radio Equipment Specifications, and Fixed Network Equipment Specifications for Hong Kong.
5. Japan MIC Telecommunication Business Law (A1, A2) and Radio Law (B1, B2 and B3).
6. Audio/Video, Battery Charging Systems, Computers, Displays, Enterprise Servers, Imaging Equipment, Set-Top Boxes, Telephony, Televisions, Ceiling Fans, CFLs (Including GU24s), Decorative Light Strings, Integral LED Lamps, Luminaires, Residential Ventilating Fans.

The test site used by BACL Corp. to collect radiated and conducted emissions measurement data is located at its facility in Sunnyvale, California, USA.

The test site at BACL Corp. has been fully described in reports submitted to the Federal Communication Commission (FCC) and Voluntary Control Council for Interference (VCCI). The details of these reports have been found to be in compliance with the requirements of Section 2.948 of the FCC Rules on February 11 and December 10, 1997, and Article 8 of the VCCI regulations on December 25, 1997. The test site also complies with the test methods and procedures set forth in CISPR 22:2008 §10.4 for measurements below 1 GHz and §10.6 for measurements above 1 GHz as well as ANSI C63.4-2009, ANSI C63.4-2009, TIA/EIA-603 & CISPR 24:2010.

The Federal Communications Commission and Voluntary Control Council for Interference have the reports on file and they are listed under FCC registration number: 90464 and VCCI Registration No.: A-0027. The test site has been approved by the FCC and VCCI for public use and is listed in the FCC Public Access Link (PAL) database.

Additionally, BACL Corp. is an American Association for Laboratory Accreditation (A2LA) accredited laboratory (Lab Code 3297-02). The current scope of accreditations can be found at

<http://www.a2la.org/scopepdf/3297-02.pdf?CFID=1132286&CFTOKEN=e42a3240dac3f6ba-6DE17DCB-1851-9E57-477422F667031258&jsessionid=8430d44f1f47cf2996124343c704b367816b>



### 3 Reference, Standards and Guidelines

---

**FCC:**

The Report and Order requires routine SAR evaluation prior to equipment authorization of portable transmitter devices, including portable telephones. For consumer products, the applicable limit is 1.6 mW/g as recommended by the ANSI/IEEE standard C95.1-1992 [6] for an uncontrolled environment (Paragraph 65). The report is tested according to KDB 447498: General RF Exposure Guidance v05.

This report describes the methodology and results of experiments performed on wireless data terminal. The objective was to determine if there is RF radiation and if radiation is found, what is the extent of radiation with respect to safety limits. SAR (Specific Absorption Rate) is the measure of RF exposure determined by the amount of RF energy absorbed by human body (or its parts) – to determine how the RF energy couples to the body or head which is a primary health concern for body worn devices. The limit below which the exposure to RF is considered safe by regulatory bodies in North America is 1.6 mW/g average over 1 gram of tissue mass.

**CE:**

The CE requires routine SAR evaluation prior to equipment authorization of portable transmitter devices, including portable telephones. For consumer products, the applicable limit is 2 mW/g as recommended by the EN50360 for an uncontrolled environment. According to the Standard, the device should be evaluated at maximum output power (radiated from the antenna) under “worst-case” conditions for normal or intended use, incorporating normal antenna operating positions, device peak performance frequencies and positions for maximum RF energy coupling.

This report describes the methodology and results of experiments performed on wireless data terminal. The objective was to determine if there is RF radiation and if radiation is found, what is the extent of radiation with respect to safety limits? SAR (Specific Absorption Rate) is the measure of RF exposure determined by the amount of RF energy absorbed by human body (or its parts) – to determine how the RF energy couples to the body or head which is a primary health concern for body worn devices. The limit below which the exposure to RF is considered safe by regulatory bodies in Europe is 2 mW/g average over 10 gram of tissue mass.

The test configurations were laid out on a specially designed test fixture to ensure the reproducibility of measurements. Each configuration was scanned for SAR. Analysis of each scan was carried out to characterize the above effects in the device.

### 3.1 SAR Limits

#### FCC Limit (1g Tissue)

EXPOSURE LIMITS	SAR (W/kg)	
	(General Population / Uncontrolled Exposure Environment)	(Occupational / Controlled Exposure Environment)
Spatial Average (averaged over the whole body)	0.08	0.4
Spatial Peak (averaged over any 1 g of tissue)	1.60	8.0
Spatial Peak (hands/wrists/feet/ankles averaged over 10 g)	4.0	20.0

#### CE Limit (10g Tissue)

EXPOSURE LIMITS	SAR (W/kg)	
	(General Population / Uncontrolled Exposure Environment)	(Occupational / Controlled Exposure Environment)
Spatial Average (averaged over the whole body)	0.08	0.4
Spatial Peak (averaged over any 10 g of tissue)	2.0	10
Spatial Peak (hands/wrists/feet/ankles averaged over 10 g)	4.0	20.0

Population/Uncontrolled Environments are defined as locations where there is the exposure of individual who have no knowledge or control of their exposure.

Occupational/Controlled Environments are defined as locations where there is exposure that may be incurred by people who are aware of the potential for exposure (i.e. as a result of employment or occupation).

General Population/Uncontrolled environments Spatial Peak limit 1.6W/kg (FCC) & 2 W/kg (CE) applied to the EUT.

## 4 Equipment List and Calibration

### 4.1 Equipment List & Calibration Info

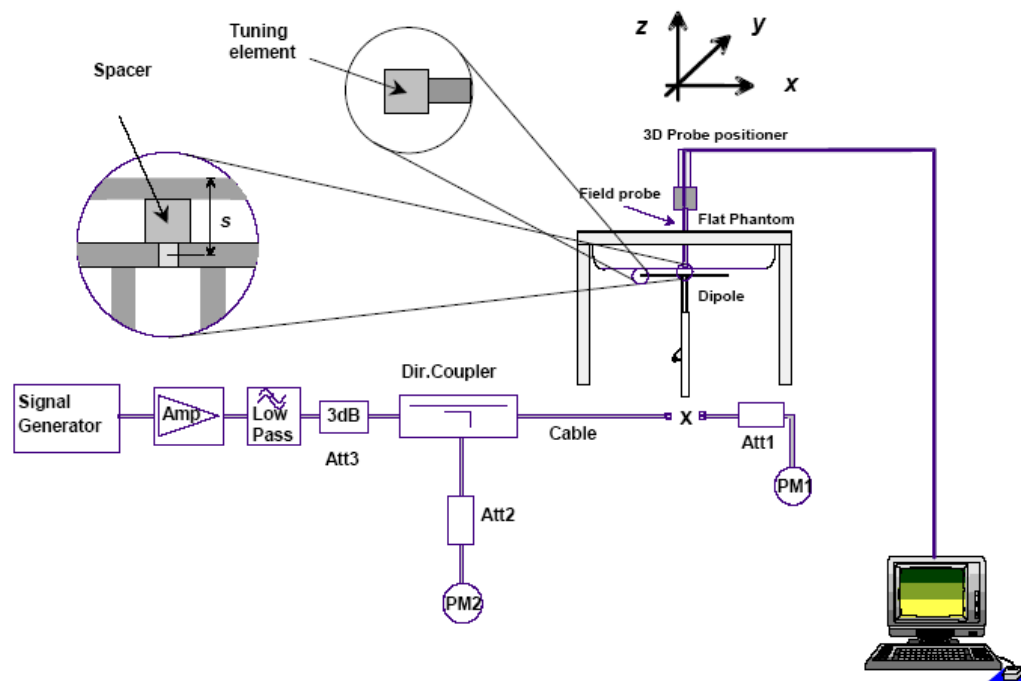
Type/Model	Cal. Due Date	S/N
DASY4 Professional Dosimetric System	N/A	N/A
Robot RX60L	N/A	CS7MBSP/467
Robot Controller	N/A	F01/5J72A1/A/01
Dell Computer Dimension 3000	N/A	N/A
SPEAG EDC3	N/A	N/A
SPEAG DAE4	2016-08-18	530
DASY4 Measurement Server	N/A	1176
SPEAG E-Field Probe, EX3DV4	2016-10-20	3619
Antenna, Dipole, D600V3	2019-02-11	1010
SPEAG Flat Phantom	N/A	1004
Body Equivalent Matter (600 MHz)	Each Time	N/A
Power Sensor Agilent E9304A	2016-08-14	MY54280008
Power Sensor Agilent E9304A	2016-08-14	MY54280006
Dielectric Probe Kit HP85070A	2016-03-10	US99360201
HP, Signal Generator, 83650B	2016-08-18	3614A00276
HP, Directional Coupler 778D	N/A	17442
SMA cable, C0001	Each time	-
SMA cable, C0002	Each time	-
SMA cable, C0003	Each time	-

## 5 SAR Measurement System Verification

### 5.1 System Accuracy Verification

SAR system verification is required to confirm measurement accuracy. The system verification must be performed for each frequency band. System verification must be performed before each series of SAR measurements.

### 5.2 System Setup Block Diagram



#### Procedure:

- 1) The SAR system verification measurements were performed in the flat section of TWIN SAM or flat phantom with shell thickness of  $2 \pm 0.2$  mm filled with head or body liquid.
- 2) The depth of liquid in phantom must be  $\geq 15$  cm for SAR measurement less than 3 GHz and  $\geq 10$  cm for SAR measurement above 3 GHz.
- 3) The dipole was mounted below the center of flat phantom, and oriented parallel to the Y-Axis. The standard measurement distance is 15 mm (below 1 GHz) and 10 mm (above 1 GHz) from dipole center to the liquid surface.
- 4) The dipole input power was 250 mW or 100 mW.
- 5) The SAR results are normalized to 1 Watt input power.
- 6) Compared the normalized the SAR results to the dipole calibration results.

### 5.3 Liquid and System Validation

Date	Simulant	Freq. [MHz]	Parameters	Liquid Temp [°C]	Target Value	Measured Value	Deviation [%]	Limits [%]
2016-02-19	Body	600	$\epsilon_r$	22	56.1	57	1.6	$\pm 5$
			$\sigma$	22	0.95	0.954	0.4	$\pm 5$
			1g SAR	22	6.66	6.72	0.9	$\pm 10$

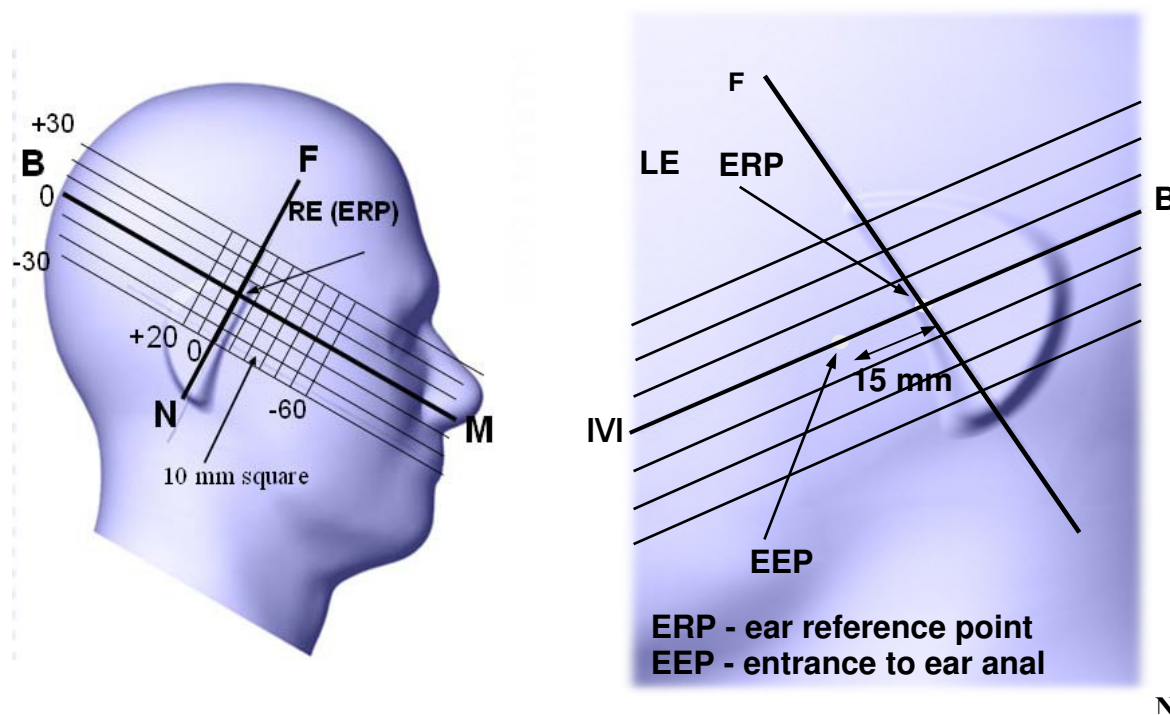
$\epsilon_r$  = relative permittivity,  $\sigma$  = conductivity and  $\rho=1000 \text{ kg/m}^3$

## 6 EUT Test Strategy and Methodology

### 6.1 Test Positions for Device Operating Next to a Person's Ear

This category includes most wireless handsets with fixed, retractable or internal antennas located toward the top half of the device, with or without a foldout, sliding or similar keypad cover. The handset should have its earpiece located within the upper  $\frac{1}{4}$  of the device, either along the centerline or off-centered, as perceived by its users. This type of handset should be positioned in a normal operating position with the “test device reference point” located along the “vertical centerline” on the front of the device aligned to the “ear reference point”. The “test device reference point” should be located at the same level as the center of the earpiece region. The “vertical centerline” should bisect the front surface of the handset at its top and bottom edges. An “ear reference point” is located on the outer surface of the head phantom on each ear spacer. It is located 1.5 cm above the center of the ear canal entrance in the “phantom reference plane” defined by the three lines joining the center of each “ear reference point” (left and right) and the tip of the mouth.

A handset should be initially positioned with the earpiece region pressed against the ear spacer of a head phantom. For the SCC-34/SC-2 head phantom, the device should be positioned parallel to the “N-F” line defined along the base of the ear spacer that contains the “ear reference point”. For interim head phantoms, the device should be positioned parallel to the cheek for maximum RF energy coupling. The “test device reference point” is aligned to the “ear reference point” on the head phantom and the “vertical centerline” is aligned to the “phantom reference plane”. This is called the “initial ear position”. While maintaining these three alignments, the body of the handset is gradually adjusted to each of the following positions for evaluating SAR:



## 6.2 Cheek/Touch Position

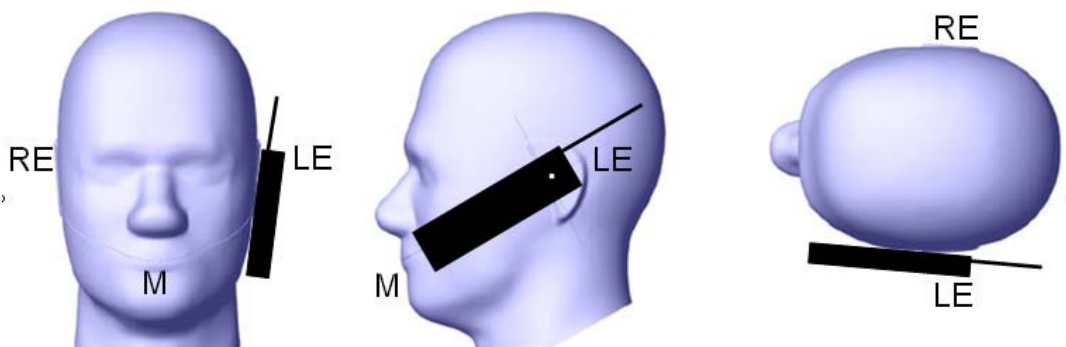
The device is brought toward the mouth of the head phantom by pivoting against the “ear reference point” or along the “N-F” line for the SCC-34/SC-2 head phantom.

This test position is established:

- When any point on the display, keypad or mouthpiece portions of the handset is in contact with the phantom.
- (or) When any portion of a foldout, sliding or similar keypad cover opened to its intended self-adjusting normal use position is in contact with the cheek or mouth of the phantom.

For existing head phantoms – when the handset loses contact with the phantom at the pivoting point, rotation should continue until the device touches the cheek of the phantom or breaks its last contact from the ear spacer.

### Cheek /Touch Position



## 6.3 Ear/Tilt Position

With the handset aligned in the “Cheek/Touch Position”:

1) If the earpiece of the handset is not in full contact with the phantom’s ear spacer (in the “Cheek/Touch position”) and the peak SAR location for the “Cheek/Touch” position is located at the ear spacer region or corresponds to the earpiece region of the handset, the device should be returned to the “initial ear position” by rotating it away from the mouth until the earpiece is in full contact with the ear spacer.

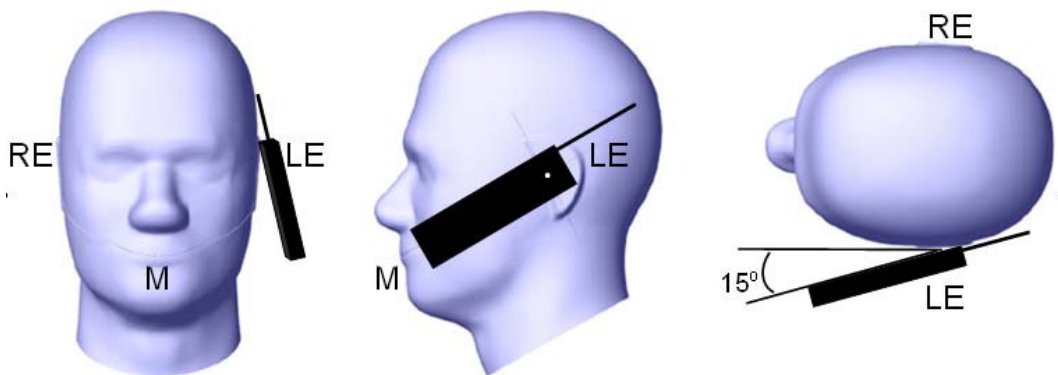
2) (otherwise) The handset should be moved (translated) away from the cheek perpendicular to the line passes through both “ear reference points” (note: one of these ear reference points may not physically exist on a split head model) for approximate 2-3 cm. While it is in this position, the device handset is tilted away from the mouth with respect to the “test device reference point” until the inside angle between the vertical centerline on the front surface of the phone and the horizontal line passing through the ear reference point is by 15 80°. After the tilt, it is then moved (translated) back toward the head perpendicular to the line passes through both “ear reference points” until the device touches the phantom or the ear spacer. If the antenna touches the head first, the positioning process should be repeated with a tilt angle less than 15 80° so that the device and its antenna would touch the phantom simultaneously. This test position may require a device holder or positioner to achieve the translation and tilting with acceptable positioning repeatability.

If a device is also designed to transmit with its keypad cover closed for operating in the head position, such positions should also be considered in the SAR evaluation. The device should be tested on the left

and right side of the head phantom in the “Cheek/Touch” and “Ear/Tilt” positions. When applicable, each configuration should be tested with the antenna in its fully extended and fully retracted positions. These test configurations should be tested at the high, middle and low frequency channels of each operating mode; for example, AMPS, CDMA, and TDMA. If the SAR measured at the middle channel

for each test configuration (left, right, Cheek/Touch, Tile/Ear, extended and retracted) is at least 2.0 dB lower than the SAR limit, testing at the high and low channels is optional for such test configuration(s). If the transmission band of the test device is less than 10 MHz, testing at the high and low frequency channels is optional.

### Ear /Tilt 15° Position

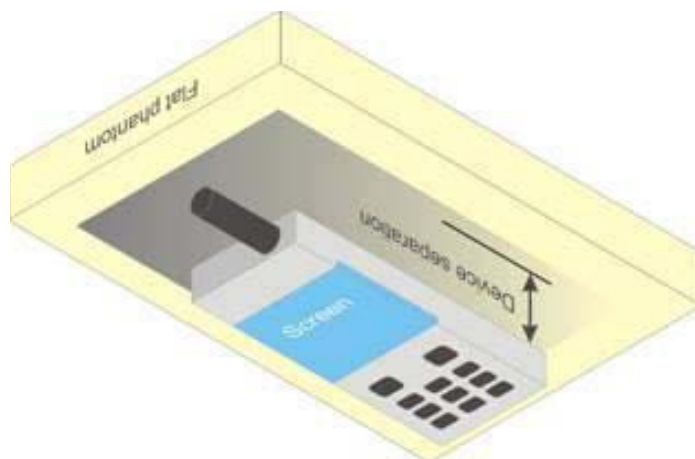




#### 6.4 Test positions for body-worn and other configurations

Body-worn operating configurations should be tested with the belt-clips and holsters attached to the device and positioned against a flat phantom in normal use configurations. Devices with a headset output should be tested with a headset connected to the device. When multiple accessories that do not contain metallic components are supplied with the device, the device may be tested with only the accessory that dictates the closest spacing to the body. When multiple accessories that contain metallic components are supplied with the device, the device must be tested with each accessory that contains a unique metallic component. If multiple accessories share an identical metallic component (e.g., the same metallic belt-clip used with different holsters with no other metallic components), only the accessory that dictates the closest spacing to the body must be tested.

Body-worn accessories may not always be supplied or available as options for some devices that are intended to be authorized for body-worn use. A separation distance of 1.5 cm between the back of the device and a flat phantom is recommended for testing body-worn SAR compliance under such circumstances. Other separation distances may be used, but they should not exceed 2.5 cm. In these cases, the device may use body-worn accessories that provide a separation distance greater than that tested for the device provided however that the accessory contains no metallic components.



## 6.5 SAR Evaluation Procedure

The evaluation was performed with the following procedure:

**Step 1:** Measurement of the SAR value at a fixed location above the ear point or central position was used as a reference value for assessing the power drop. The SAR at this point is measured at the start of the test and then again at the end of the testing.

**Step 2:** The SAR distribution at the exposed side of the head was measured at a distance of 4 mm from the inner surface of the shell. The area covered the entire dimension of the head or EUT and the horizontal grid spacing was 15 mm x 15 mm. Based on these data, the area of the maximum absorption was determined by line interpolation. The first Area Scan covers the entire dimension of the EUT to ensure that the hotspot was correctly identified.

**Step 3:** Around this point, a volume of 30 mm x 30 mm x 21 mm was assessed by measuring 5 x 5 x 7 points. On the basis of this data set, the spatial peak SAR value was evaluated under the following procedure:

1. The data at the surface were extrapolated, since the center of the dipoles is 1.2 mm away from the tip of the probe and the distance between the surface and the lowest measuring point is 1.3 mm. The extrapolation was based on a least square algorithm. A polynomial of the fourth order was calculated through the points in z-axis. This polynomial was then used to evaluate the points between the surface and the probe tip.
2. The maximum interpolated value was searched with a straightforward algorithm. Around this maximum the SAR values averaged over the spatial volumes (1 g or 10 g) were computed by the 3D-Spline interpolation algorithm. The 3D-Spline is composed of three one dimensional splines with the "Not a knot"-condition (in x, y and z-directions). The volume was integrated with the trapezoidal-algorithm. One thousand points (10 x 10 x 10) were interpolated to calculate the averages.
3. All neighboring volumes were evaluated until no neighboring volume with a higher average value was found.

**Step 4:** Re-measurement of the SAR value at the same location as in Step 1. If the value changed by more than 5%, the evaluation was repeated.

## 6.6 Test Methodology

The tests documented in this report were performed in accordance with 447498 D01, IC RSS 102 Issue 5 and following specific FCC Test Procedure.

- KDB 447498 D01 General RF Exposure Guidance v06

## 7 DASY4 SAR Evaluation Procedure

### 7.1 Power Reference Measurement

The Power Reference Measurement and Power Drift Measurement jobs are useful jobs for monitoring the power drift of the device under test in the batch process. Both jobs measure the field at a specified reference position, at a selectable distance from the phantom surface. The reference position can be either the selected section's grid reference point or a user point in this section. The reference job projects the selected point onto the phantom surface, orients the probe perpendicularly to the surface, and approaches the surface using the selected detection method. The Minimum distance of probe sensors to surface determines the closest measurement point to phantom surface. By default, the Minimum distance of probe sensors to surface is 4mm. This distance can be modified by the user, but cannot be smaller than the Distance of sensor calibration points to probe tip as defined in the probe properties (for example, 2.7mm for an ET3DV6 probe type).

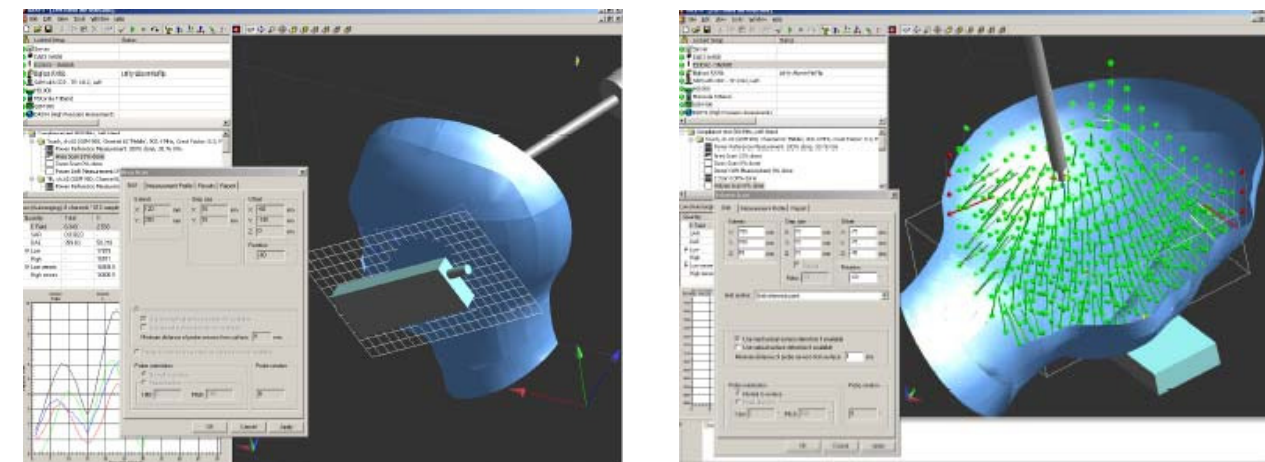
### 7.2 Area Scan

The Area Scan is used as a fast scan in two dimensions to find the area of high field values, before doing a finer measurement around the hot spot. The sophisticated interpolation routines implemented in DASY4 software can find the maximum locations even in relatively coarse grids.

The scanning area is defined by an editable grid. This grid is anchored at the grid reference point of the selected section in the phantom. When the Area Scan's property sheet is brought-up, grid settings can be edited by a user.

When an Area Scan has measured all reachable points, it computes the field maxima found in the scanned area, within a range of the global maximum. The range (in dB) is specified in the standards for compliance testing. For example, a 2 dB range is required in IEEE 1528-2003, EN 50361 and IEC 62209 standards, whereby 3 dB is a requirement when compliance is assessed in accordance with the ARIB standard (Japan). If only one Zoom Scan follows the Area Scan, then only the absolute maximum will be taken as reference. For cases where multiple maximums are detected, the number of Zoom Scans has to be increased accordingly.

After measurement is completed, all maxima and their coordinates are listed in the Results property page. The maximum selected in the list is highlighted in the 3-D view. For the secondary maxima returned from an Area Scan, the user can specify a lower limit (peak SAR value), in addition to the Find secondary maxima within x dB condition. Only the primary maximum and any secondary maxima within x dB from the primary maximum and above this limit will be measured.



### 7.3 Zoom Scan

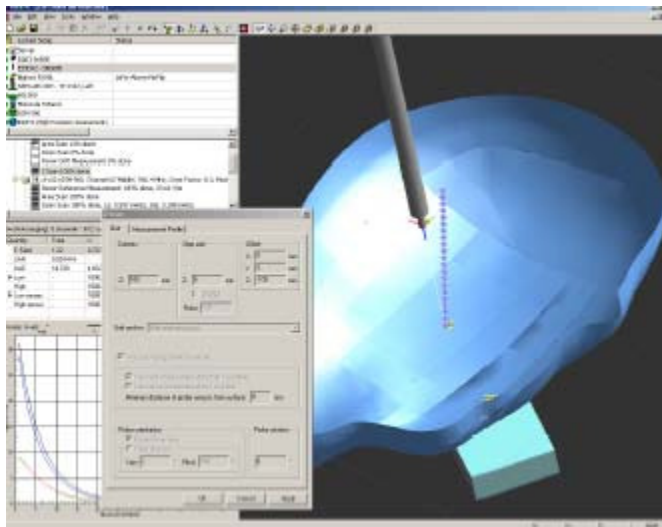
Zoom Scans are used to assess the peak spatial SAR values within a cubic averaging volume containing 1 g and 10 g of simulated tissue. The default Zoom Scan measures 5 x 5 x 7 points within a cube whose base faces are centered around the maxima found in a preceding area scan job within the same procedure. When the measurement is done, the Zoom Scan evaluates the averaged SAR for 1 g and 10 g and displays these values next to the job's label.

### 7.4 Power drift measurement

The Power Drift Measurement job measures the field at the same location as the most recent power reference measurement job within the same procedure, and with the same settings. The Power Drift Measurement gives the field difference in dB from the reading conducted within the last Power Reference Measurement. Several drift measurements are possible for one reference measurement. This allows a user to monitor the power drift of the device under test within a batch process. The measurement procedure is the same as Step 1.

### 7.5 Z-Scan

The Z Scan job measures points along a vertical straight line. The line runs along the Z axis of a one-dimensional grid. A user can anchor the grid to the section reference point, to any defined user point or to the current probe location. As with any other grids, the local Z axis of the anchor location establishes the Z axis of the grid.



## 8 Description of Test System

These measurements were performed with the automated near-field scanning system DASY4 from Schmid & Partner Engineering AG (SPEAG) which is the fourth generation of the system shown in the figure hereinafter:



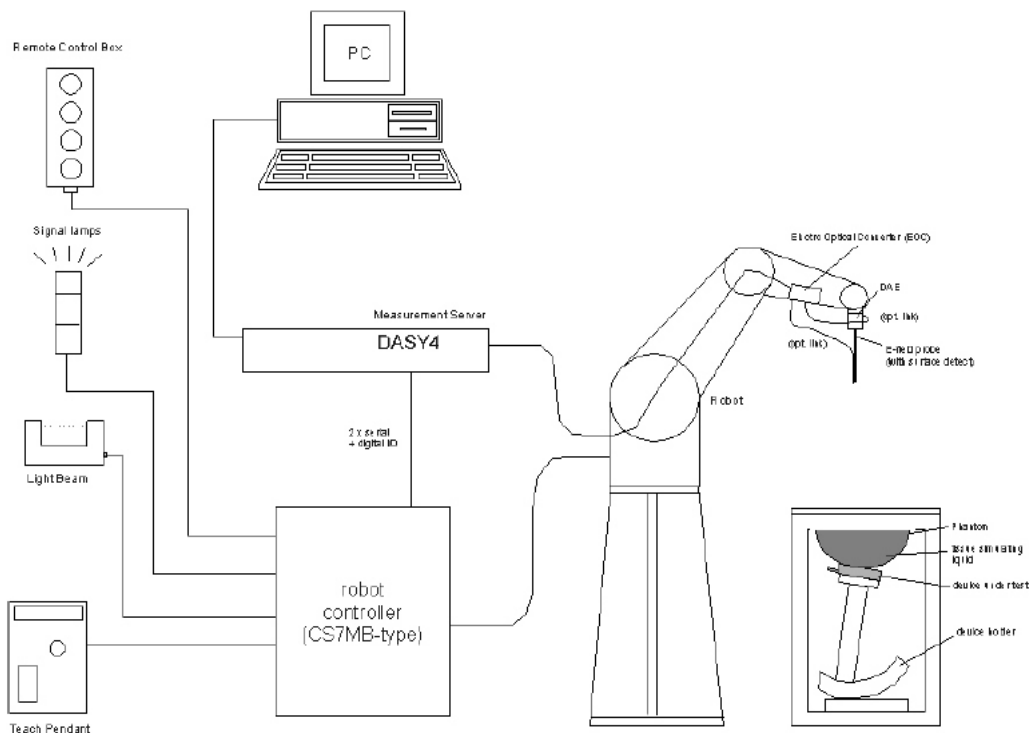
The system is based on a high precision robot (working range greater than 0.9m), which positions the probes with a positional repeatability of better than  $\pm 0.02\text{mm}$ . Special E- and H-field probes have been developed for measurements close to material discontinuity, the sensors of which are directly loaded with a Schottky diode and connected via highly resistive lines to the data acquisition unit.

The SAR measurements were conducted with the dosimetric probe ET3DV6 SN: 1604 (manufactured by SPEAG), designed in the classical triangular configuration and optimized for dosimetric evaluation. The probe has been calibrated according to the procedure with accuracy of better than  $\pm 10\%$ . The spherical isotropy was evaluated with the procedure and found to be better than  $\pm 0.25\text{dB}$ .

### 8.1 IEEE SCC-34/SC-2 P1528 Recommended Tissue Dielectric Parameters

Frequency (MHz)	Head Tissue		Body Tissue	
	$\epsilon_r$	$\sigma$ (S/m)	$\epsilon_r$	$\sigma$ (S/m)
150	52.3	0.76	61.9	0.80
300	45.3	0.87	58.2	0.92
450	43.5	0.87	56.7	0.94
835	41.5	0.90	55.2	0.97
900	41.5	0.97	55.0	1.05
915	41.5	0.98	55.0	1.06
1450	40.5	1.20	54.0	1.30
1610	40.3	1.29	53.8	1.40
1800-2000	40.0	1.40	53.3	1.52
2450	39.2	1.80	52.7	1.95
3000	38.5	2.40	52.0	2.73
5800	35.3	5.27	48.2	6.00

### 8.2 Measurement System Diagram



The DASY4 system for performing compliance tests consists of the following items:

- A standard high precision 6-axis robot (Stäubli RX family) with controller, teach pendant and software. An arm extension for accommodating the data acquisition electronics (DAE).
- A dosimetric probe, i.e., an isotropic E-field probe optimized and calibrated for usage in tissue simulating liquid. The probe is equipped with an optical surface detector system.
- A data acquisition electronics (DAE) which performs the signal amplification, signal multiplexing, AD-conversion, offset measurements, mechanical surface detection, collision detection, etc. The unit is battery powered with standard or rechargeable batteries. The signal is optically transmitted to the EOC.
- The Electro-optical converter (EOC) performs the conversion between optical and electrical of the signals for the digital communication to the DAE and for the analog signal from the optical surface detection. The EOC is connected to the measurement server.
- The function of the measurement server is to perform the time critical tasks such as signal filtering, control of the robot operation and fast movement interrupts.
- A probe alignment unit which improves the (absolute) accuracy of the probe positioning.
- A computer operating Windows 2000 or Windows XP.
- DASY4 software.
- Remote control with teach pendant and additional circuitry for robot safety such as warning lamps, etc.
- The SAM twin phantom enabling testing left-hand and right-hand usage.
- The device holder for handheld mobile phones.
- Tissue simulating liquid mixed according to the given recipes.
- Validation dipole kits allowing system validation.

### **8.3 System Components**

- DASY4 Measurement Server
- Data Acquisition Electronics
- Probes
- Light Beam Unit
- Medium
- SAM Twin Phantom
- Device Holder for SAM Twin Phantom
- System Validation Kits
- Robot



## DASY4 Measurement Server

The DASY4 measurement server is based on a PC/104 CPU board with a 166MHz low-power Pentium, 32MB chip disk and 64MB RAM. The necessary circuits for communication with either the DAE4 (or DAE3) electronic box as well as the 16-bit AD-converter system for optical detection and digital I/O interface are contained on the DASY4 I/O-board, which is directly connected to the PC/104 bus of the CPU board.



The measurement server performs all real-time data evaluation for field measurements and surface detection, controls robot movements and handles safety operation. The PC-operating system cannot interfere with these time critical processes. All connections are supervised by a watchdog, and disconnection of any of the cables to the measurement server will automatically disarm the robot and disable all program-controlled robot movements. Furthermore, the measurement server is equipped with two expansion slots which are reserved for future applications. Please note that the expansion slots do not have a standardized pin out and therefore only the expansion cards provided by SPEAG can be inserted. Expansion cards from any other supplier could seriously damage the measurement server.

## Data Acquisition Electronics

The data acquisition electronics DAE3 consists of a highly sensitive electrometer grade preamplifier with auto-zeroing, a channel and gain-switching multiplexer, a fast 16 bit AD-converter and a command decoder and control logic unit. Transmission to the measurement server is accomplished through an optical downlink for data and status information as well as an optical uplink for commands and the clock.



## Probes

The DASY system can support many different probe types.

**Dosimetric Probes:** These probes are specially designed and calibrated for use in liquids with high permittivities. They should not be used in air, since the spherical isotropy in air is poor ( $\pm 2$  dB). The dosimetric probes have special calibrations in various liquids at different frequencies.

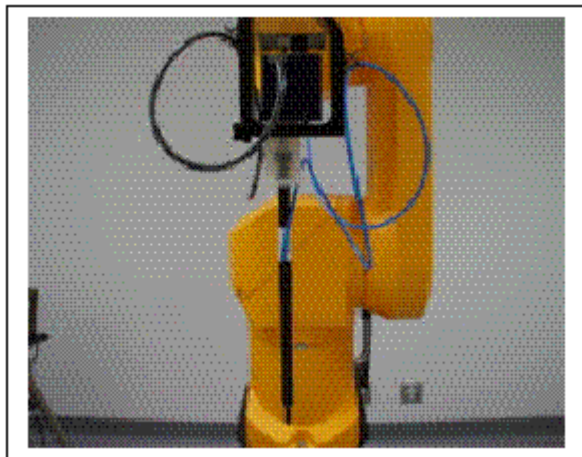
**Free Space Probes:** These are electric and magnetic field probes specially designed for measurements in free space. The z-sensor is aligned to the probe axis and the rotation angle of the x-sensor is specified. This allows the DASY system to automatically align the probe to the measurement grid for field component measurement. The free space probes are generally not calibrated in liquid. (The H-field probes can be used in liquids without any change of parameters.)

**Temperature Probes:** Small and sensitive temperature probes for general use. They use a completely different parameter set and different evaluation procedures. Temperature rise features allow direct SAR evaluations with these probes.



### ET3DV6 Probe Specification

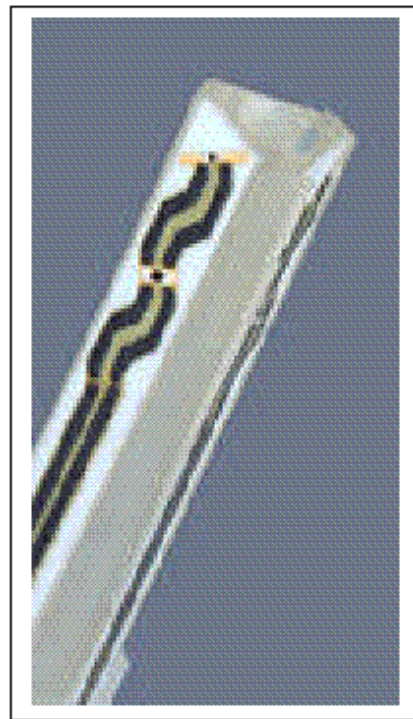
Construction Symmetrical design with triangular core  
 Built-in optical fiber for surface detection System  
 Built-in shielding against static charges  
 Calibration In air from 10 MHz to 2.5 GHz  
 In brain and muscle simulating tissue at  
 Frequencies of 450 MHz, 900 MHz and  
 1.8 GHz (accuracy  $\pm 8\%$ )  
 Frequency 10 MHz to  $> 6$  GHz; Linearity:  $\pm 0.2$  dB  
 (30 MHz to 3 GHz)  
 Directivity  $\pm 0.2$  dB in brain tissue (rotation around  
 probe axis)  
 $\pm 0.4$  dB in brain tissue (rotation normal probe axis)  
 Dynamic 5 mW/g to  $> 100$  mW/g;  
 Range Linearity:  $\pm 0.2$  dB  
 Surface  $\pm 0.2$  mm repeatability in air and clear liquids  
 Detection over diffuse reflecting surfaces.  
 Dimensions Overall length: 330 mm  
 Tip length: 16 mm



Photograph of the probe

Body diameter: 12 mm  
 Tip diameter: 6.8 mm  
 Distance from probe tip to dipole centers: 2.7 mm  
 Application General dosimetric up to 3 GHz  
 Compliance tests of mobile phones  
 Fast automatic scanning in arbitrary phantoms

The SAR measurements were conducted with the dosimetric probe ET3DV6 designed in the classical triangular configuration and optimized for dosimetric evaluation. The probe is constructed using the thick film technique; with printed resistive lines on ceramic substrates. The probe is equipped with an optical multi-fiber line ending at the front of the probe tip. It is connected to the EOC box on the robot arm and provides an automatic detection of the phantom surface. Half of the fibers are connected to a pulsed infrared transmitter, the other half to a synchronized receiver. As the probe approaches the surface, the reflection from the surface produces a coupling from the transmitting to the receiving fibers. This reflection increases first during the approach, reaches maximum and then decreases. If the probe is flatly touching the surface, the coupling is zero. The distance of the coupling maximum to the surface is independent of the surface reflectivity and largely independent of the surface to probe angle. The DASY3 software reads the reflection during a software approach and looks for the maximum using a 2nd order fitting. The approach is stopped when reaching the maximum.



Inside view of  
 ET3DV6 E-field Probe

### E-Field Probe Calibration Process

Each probe is calibrated according to a dosimetric assessment procedure described in [6] with accuracy better than +/- 10%. The spherical isotropy was evaluated with the procedure described in [7] and found to be better than +/-0.25dB. The sensitivity parameters (NormX, NormY, NormZ), the diode compression parameter (DCP) and the conversion factor (ConvF) of the probe are tested.

The free space E-field from amplified probe outputs is determined in a test chamber. This is performed in a TEM cell for frequencies below 1 GHz, and in a waveguide above 1 GHz for free space. For the free space calibration, the probe is placed in the volumetric center of the cavity and at the proper orientation with the field. The probe is then rotated 360 degrees.

E-field temperature correlation calibration is performed in a flat phantom filled with the appropriate simulated brain tissue. The measured free space E-field in the medium correlates to temperature rise in dielectric medium. For temperature correlation calibration a RF transparent thermistor-based temperature probe is used in conjunction with the E-field probe.

### Data Evaluation

The DASY4 post-processing software (SEMCAD) automatically executes the following procedures to calculate the field units from the microvolt readings at the probe connector. The parameters used in the evaluation are stored in the configuration modules of the software:

Probe parameters:	- Sensitivity	Normi, ai0, ai1, ai2
	- Conversion factor	ConvFi
	- Diode compression point	dcp <sub>i</sub>
Device parameters:	- Frequency	f
	- Crest factor	cf
Media parameters:	- Conductivity	σ
	- Density	ρ

These parameters must be set correctly in the software. They can be found in the component documents or they can be imported into the software from the configuration files issued for the DASY components. In the direct measuring mode of the multimeter option, the parameters of the actual system setup are used. In the scan visualization and export modes, the parameters stored in the corresponding document files are used.

The first step of the evaluation is a linearization of the filtered input signal to account for the compression characteristics of the detector diode. The compensation depends on the input signal, the diode type and the DC-transmission factor from the diode to the evaluation electronics. If the exciting field is pulsed, the crest factor of the signal must be known to correctly compensate for peak power. The formula for each channel can be given as:

$$V_i = U_i + U_i^2 \cdot \frac{cf}{dcp_i}$$

With  $V_i$  = compensated signal of channel i (i=x, y, z)  
 $U_i$  = input signal of channel i (i=x, y, z)  
 cf = crest factor of exciting field (DASY parameter)  
 dcp<sub>i</sub> = diode compression point (DASY parameter)

From the compensated input signals the primary field data for each channel can be evaluated:

$$\text{E - fieldprobes : } E_i = \sqrt{\frac{V_i}{\text{Norm}_i \cdot \text{ConuF}}}$$

$$\text{H - fieldprobes : } H_i = \sqrt{V_i} \cdot \frac{a_{i0} + a_{i1}f + a_{i2}f^2}{f}$$

With  $V_i$  = compensated signal of channel i (i=x, y, z)  
 $\text{Norm}_i$  = sensor sensitivity of channel i (i=x, y, z)  
 $\mu\text{V}/(\text{V/m})^2$  for E-field probes  
 $\text{ConF}$  = sensitivity enhancement in solution  
 $a_{ij}$  = sensor sensitivity factors for H-field probes  
 $f$  = carrier frequency [GHz]  
 $E_i$  = electric field strenggy of channel i in V/m  
 $H_i$  = diode compression point (DASY parameter)

The RSS value of the field components gives the total field strength (Hermitian magnitude):

$$E_{tot} = \sqrt{E_x^2 + E_y^2 + E_z^2}$$

The primary field data are used to calculate the derived field units.

$$\text{SAR} = E_{tot}^2 \cdot \frac{\sigma}{\rho \cdot 1'000}$$

With  $\text{SAR}$  = local specific absorption rate in mW/g  
 $E_{tot}$  = total field strength in V/m  
 $\sigma$  = conductivity in [mho/meter] or [Siemens/meter]  
 $\rho$  = equivalent tissue density in  $\text{g/cm}^3$

Note that the density is normally set to 1, to account for actual brain density rather than the density of the simulation liquid.

### Light Beam Unit

The light beam switch allows automatic “tooling” of the probe. During the process, the actual position of the probe tip with respect to the robot arm is measured, as well as the probe length and the horizontal probe offset. The software then corrects all movements, so that the robot coordinates are valid for the probe tip. The repeatability of this process is better than 0.1 mm. If a position has been taught with an aligned probe, the same position will be reached with another aligned probe within 0.1 mm, even if the other probe has different dimensions. During probe rotations, the probe tip will keep its actual position.

## Medium

### Parameters

The parameters of the tissue simulating liquid strongly influence the SAR in the liquid. The parameters for the different frequencies are defined in the corresponding compliance standards (e.g., EN 50361, IEEE 1528-2003).

### Parameter measurements

Several measurement systems are available for measuring the dielectric parameters of liquids:

- The open coax test method (e.g., HP85070 dielectric probe kit) is easy to use, but has only moderate accuracy. It is calibrated with open, short, and deionized water and the calibrations a critical process.
- The transmission line method (e.g., model 1500T from DAMASKOS, INC.) measures the transmission and reflection in a liquid filled high precision line. It needs standard two port calibration and is probably more accurate than the open coax method.
- The reflection line method measures the reflection in a liquid filled shorted precision lined. The method is not suitable for these liquids because of its low sensitivity.
- The slotted line method scans the field magnitude and phase along a liquid filled line. The evaluation is straight forward and only needs a simple response calibration. The method is very accurate, but can only be used in high loss liquids and at frequencies above 100 to 200MHz. Cleaning the line can be tedious.

## SAM Twin Phantom

The SAM twin phantom is a fiberglass shell phantom with 2mm shell thickness (except the ear region where shell thickness increases to 6mm). It has three measurement areas:

- Left hand
- Right hand
- Flat phantom

The phantom table comes in two sizes: A 100 x 50 x 85 cm (L x W x H) table for use with free standing robots (DASY4 professional system option) or as a second phantom and a 100 x 75 x 85 cm (L x W x H) table with reinforcements for table mounted robots (DASY4 compact system option).

The bottom plate contains three pair of bolts for locking the device holder. The device holder positions are adjusted to the standard measurement positions in the three sections. Only one device holder is necessary if two phantoms are used (e.g., for different liquids) A white cover is provided to tap the phantom during o<sub>-</sub>periods to prevent water evaporation and changes in the liquid parameters. Free space



scans of devices on the cover are possible. On the phantom top, three reference markers are provided to identify the phantom position with respect to the robot.

The phantom can be used with the following tissue simulating liquids:

- Water-sugar based liquids can be left permanently in the phantom. Always cover the liquid if the system is not used, otherwise the parameters will change due to water evaporation.
- Glycol based liquids should be used with care. As glycol is a softener for most plastics, the liquid should be taken out of the phantom and the phantom should be dried when the system is not used (desirable at least once a week).
- Do not use other organic solvents without previously testing the phantom's compatibility.

### Device Holder for SAM Twin Phantom

The SAR in the phantom is approximately inversely proportional to the square of the distance between the source and the liquid surface. For a source in 5mm distance, a positioning uncertainty of  $\pm 0.5\text{mm}$  would produce a SAR uncertainty of  $\pm 20\%$ . An accurate device positioning is therefore crucial for accurate and repeatable measurements. The positions, in which the devices must be measured, are defined by the standards.

The DASY device holder is designed to cope with different positions given in the standard. It has two scales for the device rotation (with respect to the body axis) and the device inclination (with respect to the line between the ear reference points). The rotation centers for both scales is the ear reference point ERP). Thus the device needs no repositioning when changing the angles.



The DASY device holder has been made out of low-loss POM material having the following dielectric parameters: relative permittivity  $\epsilon_r=3$  and loss tangent  $\tan \delta=0.02$ . The amount of dielectric material has been reduced in the closest vicinity of the device, since measurements have suggested that the influence of the clamp on the test results could thus be lowered.

## System Validation Kits

Each DASY system is equipped with one or more system validation kits. These units, together with the predefined measurement procedures within the DASY software, enable the user to conduct the system performance check and system validation. For that purpose a well-defined SAR distribution in the flat section of the SAM twin phantom is produced.

System validation kit includes a dipole, tripod holder to fix it underneath the flat phantom and a corresponding distance holder. Dipoles are available for the variety of frequencies between 300MHz and 6 GHz (dipoles for other frequencies or media and other calibration conditions are available upon request).

The dipoles are highly symmetric and matched at the center frequency for the specified liquid and distance to the flat phantom (or flat section of the SAM-twin phantom). The accurate distance between the liquid surface and the dipole center is achieved with a distance holder that snaps on the dipole.

## Robot

The DASY4 system uses the high precision industrial robots RX60L, RX90 and RX90L, as well as the RX60BL and RX90BL types out of the newer series from Stäubli SA (France). The RX robot series offers many features that are important for our application:

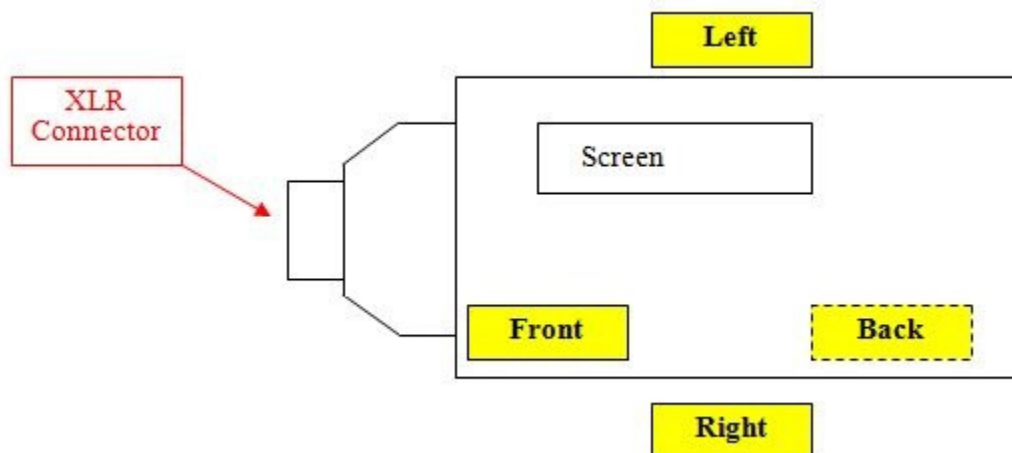
- High precision (repeatability 0.02mm)
- High reliability (industrial design)
- Low maintenance costs (virtually maintenance-free due to direct drive gears; no belt drives)
- Jerk-free straight movements (brushless synchronous motors; no stepper motors)
- Low ELF interference (the closed metallic construction shields against motor control fields)

For the newly delivered DASY4 systems as well as for the older DASY3 systems delivered since 1999, the CS7MB robot controller version from Stäubli is used. Previously delivered systems have either a CS7 or CS7M controller; the differences to the CS7MB are mainly in the hardware, but some procedures in the robot software from Stäubli are also not completely the same. The following descriptions about robot hard- and software correspond to CS7MB controller with software version 13.1 (edit S5). The actual commands, procedures and configurations, also including details in hardware, might differ if an older robot controller is in use. In this case please also refer to the Stäubli manuals for further information.



## 9 SAR Measurement Consideration and Reduction

### 9.1 SAR Consideration



EUT Front View

#### 9.1.1 Body-worn configuration

A leather pouch with belt clip will be included with transmitter at purchase. This accessory will enable body-worn configuration and the body SAR was tested. The EUT was placed in the pouch and tested with the belt clip touching the flat phantom surface. Microphone was connected to the EUT via MCA-TPOWER cable adapter; the cable was held in parallel with the phantom during scan.

#### 9.1.2 Hand-held configuration

The RF output from the transmitter's PCB will be connected to the shell of the XLR connector. When the transmitter attach to the microphone via XLR connection, the body of the microphone will be acting as the transmitting antenna. Thus, hand-held configuration was considered for SAR evaluation.

As instructed by FCC in KDB 702432, the EUT was evaluated for the following configurations:

- a. With the device connected to the microphone; place the device in contact with the flat phantom and the top half of the microphone outside of the phantom boundary. SAR was measured in four configurations – with each of the flat surfaces of the transmitter module against the phantom.
- b. Repeat a) with the device connected to the microphone and placed in contact with the flat phantom. SAR was measured in four configurations too.

## 9.2 SAR Reduction

Note<sup>1</sup>: According to KDB 447498 D01, when the frequency channels required for SAR testing are not specified in the published RF exposure KDB procedures, the following should be applied to determine the number of required test channels. The test channels should be evenly spread across the transmission frequency band of each wireless mode.

$N_c = \text{Round} \{ [100(f_{\text{high}} - f_{\text{low}}) / f_c]^{0.5} \times (f_c / 100)^{0.2} \}$ , where

$N_c$  is the number of test channels, rounded to the nearest integer;

$f_{\text{high}}$  and  $f_{\text{low}}$  are the highest and lowest channel frequencies within the transmission band;

$f_c$  is the mid-band channel frequency;

All frequencies are in MHz.

Note<sup>2</sup>: According to KDB 447498 D01,

### Reduced

When the mid channel or the highest output power channel is less than 0.8 W/kg, when the transmission band is less than 100MHz, other channels are not required; When the middle channel or the highest output power channel is less than 0.6 W/kg, when the transmission band is between 100MHz and 200MHz, other channels are not required.



Configuration	Side	Channel	Result
Body-worn	Back	Channel-537.6 MHz	Reduced
		Channel-556.8 MHz	Reduced
		Channel-576.0 MHz	Tested
		Channel-595.1 MHz	Reduced
		Channel-614.3 MHz	Reduced
Hand-held a & Hand-held b	Front	Channel-537.6 MHz	Reduced
		Channel-556.8 MHz	Reduced
		Channel-576.0 MHz	Tested
		Channel-595.1 MHz	Reduced
		Channel-614.3 MHz	Reduced
	Back	Channel-537.6 MHz	Reduced
		Channel-556.8 MHz	Reduced
		Channel-576.0 MHz	Tested
		Channel-595.1 MHz	Reduced
		Channel-614.3 MHz	Reduced
	Left	Channel-537.6 MHz	Reduced
		Channel-556.8 MHz	Reduced
		Channel-576.0 MHz	Tested
		Channel-595.1 MHz	Reduced
		Channel-614.3 MHz	Reduced
	Right	Channel-537.6 MHz	Reduced
		Channel-556.8 MHz	Reduced
		Channel-576.0 MHz	Tested
		Channel-595.1 MHz	Reduced
		Channel-614.3 MHz	Reduced

## 10 SAR Measurement Results

This page summarizes the results of the performed dosimetric evaluation. The plots with the corresponding SAR distributions, which reveal information about the location of the maximum SAR with respect to the device, could be found in Appendix E.

### 10.1 Test Environmental Conditions

<b>Temperature:</b>	23° C
<b>Relative Humidity:</b>	43 %
<b>ATM Pressure:</b>	101.3 kPa

Testing was performed by Jin Yang on 2016-02-19 in SAR chamber.

### 10.2 Test Results

Test Channel	EUT Position	Frequency (MHz)	Liquid Type	Output Power (dBm)	Max. Rated Power (dBm)	Scale Factor	Measured SAR (W/kg) 1g Tissue	Scaled SAR (W/kg) 1g Tissue	Corrected SAR	Limit (W/kg) 1g Tissue	Plot #
<b>Body-worn with Belt Clip</b>											
Middle	Back Touch	576	Body	19.9	20	1.02	0.083	<b>0.085</b>	/	1.6	1
<b>Hand-held Configuration a</b>											
Middle	Front Touch	576	Body	19.9	20	1.02	0.331	0.34	/	1.6	2
Middle	Back Touch	576	Body	19.9	20	1.02	0.370	0.38	/	1.6	3
Middle	Left Touch	576	Body	19.9	20	1.02	0.195	0.20	/	1.6	4
Middle	Right Touch	576	Body	19.9	20	1.02	0.251	0.26	/	1.6	5
<b>Hand-held Configuration b</b>											
Middle	Front Touch	576	Body	19.9	20	1.02	0.367	0.37	/	1.6	6
Middle	Back Touch	576	Body	19.9	20	1.02	0.300	0.31	/	1.6	7
Middle	Left Touch	576	Body	19.9	20	1.02	0.357	0.36	/	1.6	8
Middle	Right Touch	576	Body	19.9	20	1.02	0.394	<b>0.40</b>	/	1.6	9

## Corrected SAR Evaluation Table

Frequency (MHz)	Liquid Type	$C_\epsilon$	$\Delta\epsilon_r$	$C_\delta$	$\Delta\delta$	$\Delta\text{SAR}$
576	Body	-0.21542	0.0141	0.773071	0.0042	0.000209

$$\Delta\text{SAR} = c_\epsilon \Delta\epsilon_r + c_\sigma \Delta\sigma$$

$$c_\epsilon = -7,854 \times 10^{-4} f^3 + 9,402 \times 10^{-3} f^2 - 2,742 \times 10^{-2} f - 0,2026$$

$$c_\sigma = 9,804 \times 10^{-3} f^3 - 8,661 \times 10^{-2} f^2 + 2,981 \times 10^{-2} f + 0,7829$$

where

$f$  is the frequency in GHz.

*Note 1: According NOTICE 2012-DRS0529, if the correction  $\Delta\text{SAR}$  has a negative sign, the measured SAR result should be corrected, and has a positive sign, the measured SAR result shall not be corrected.*

## 11 Appendix A – Measurement Uncertainty

The uncertainty budget has been determined for the DASY4 measurement system and is given in the following Table.

300 MHz to 3 GHz

DASY4 Uncertainty Budget According to IEEE 1528								
Error Description	Uncertainty Value	Prob. Dist.	Div.	(c i) 1g	(c i) 10g	Std. Unc. (1g)	Std. Unc. (10g)	(v i) veff
<b>Measurement System</b>								
Probe Calibration	± 6.55 %	N	1	1	1	± 6.55 %	± 6.55 %	∞
Axial Isotropy	± 0.25 %	R	$\sqrt{3}$	0.7	0.7	± 0.1 %	± 0.1 %	∞
Hemispherical Isotropy	± 1.3%	R	$\sqrt{3}$	0.7	0.7	± 0.53 %	± 0.53 %	∞
Boundary Effects	± 2.0 %	R	$\sqrt{3}$	1	1	± 1.2 %	± 1.2 %	∞
Linearity	± 0.3 %	R	$\sqrt{3}$	1	1	± 0.17 %	± 0.17 %	∞
System Detection Limits	± 1.0 %	R	$\sqrt{3}$	1	1	± 0.6 %	± 0.6 %	∞
Modulation Response	± 1.9 %	R	$\sqrt{3}$	1	1	± 1.1%	± 1.1%	∞
Readout Electronics	± 0.3 %	N	1	1	1	± 0.3 %	± 0.3 %	∞
Response Time	0	R	$\sqrt{3}$	1	1	0	0	∞
Integration Time	0	R	$\sqrt{3}$	1	1	0	0	∞
RF Ambient Noise	± 3.0 %	R	$\sqrt{3}$	1	1	± 1.7 %	± 1.7 %	∞
RF Ambient Conditions	± 3.0 %	R	$\sqrt{3}$	1	1	± 1.7 %	± 1.7 %	∞
Probe Positioner	± 0.8 %	R	$\sqrt{3}$	1	1	± 0.5 %	± 0.5 %	∞
Probe Positioning	± 2.9 %	R	$\sqrt{3}$	1	1	± 1.7 %	± 1.7 %	∞
Max. SAR Eval.	± 1.0 %	R	$\sqrt{3}$	1	1	± 0.6 %	± 0.6 %	∞
<b>Test Sample Related</b>								
Device Positioning	± 2.9 %	N	1	1	1	± 2.9 %	± 2.9 %	145
Device Holder	± 3.6 %	N	1	1	1	± 3.6 %	± 2.6 %	5
Power Drift	± 5.0 %	R		1	1	± 2.9 %	± 2.9 %	∞
<b>Phantom and Setup</b>								
Phantom Uncertainty	± 4.0 %	R	$\sqrt{3}$	1	1	± 2.3 %	± 2.3 %	∞
Liquid Conductivity (Target)	± 5.0 %	R	$\sqrt{3}$	0.64	0.43	± 1.8 %	± 1.2 %	∞
Liquid Conductivity (meas.)	± 2.5 %	N	1	0.64	0.43	± 1.6 %	± 1.1 %	∞
Liquid Permittivity (Target)	± 5.0 %	R	$\sqrt{3}$	0.6	0.49	± 1.7 %	± 1.4 %	∞
Liquid Permittivity (meas.)	± 2.5 %	N	1	0.6	0.49	± 1.5 %	± 1.2 %	∞
Combined Std. Uncertainty	-	RSS	-	-	-	± 9.7 %	± 9.6 %	330
Expanded STD Uncertainty	-	2	-	-	-	± 19.4 %	± 19.2 %	-

## 12 Appendix B – Probe Calibration Certificates

Calibration Laboratory of  
Schmid & Partner  
Engineering AG  
Zeughausstrasse 43, 8004 Zurich, Switzerland



S Schweizerischer Kalibrierdienst  
C Service suisse d'étalonnage  
S Servizio svizzero di taratura  
S Swiss Calibration Service

Accredited by the Swiss Accreditation Service (SAS)  
The Swiss Accreditation Service is one of the signatories to the EA  
Multilateral Agreement for the recognition of calibration certificates

Accreditation No.: SCS 0108

Client **BACL**

Certificate No: EX3-3619\_Oct15

### CALIBRATION CERTIFICATE

Object **EX3DV4 - SN:3619**

Calibration procedure(s) **QA CAL-01.v9, QA CAL-12.v9, QA CAL-14.v4, QA CAL-23.v5,  
QA CAL-25.v6  
Calibration procedure for dosimetric E-field probes**

Calibration date: **October 20, 2015**

This calibration certificate documents the traceability to national standards, which realize the physical units of measurements (SI).  
The measurements and the uncertainties with confidence probability are given on the following pages and are part of the certificate.

All calibrations have been conducted in the closed laboratory facility: environment temperature ( $22 \pm 3$ )°C and humidity < 70%.

Calibration Equipment used (M&TE critical for calibration)

Primary Standards	ID	Cal Date (Certificate No.)	Scheduled Calibration
Power meter E4419B	GB41293874	01-Apr-15 (No. 217-02128)	Mar-16
Power sensor E4412A	MY41498087	01-Apr-15 (No. 217-02128)	Mar-16
Reference 3 dB Attenuator	SN: S5054 (3c)	01-Apr-15 (No. 217-02129)	Mar-16
Reference 20 dB Attenuator	SN: S5277 (20x)	01-Apr-15 (No. 217-02132)	Mar-16
Reference 30 dB Attenuator	SN: S5129 (30b)	01-Apr-15 (No. 217-02133)	Mar-16
Reference Probe ES3DV2	SN: 3013	30-Dec-14 (No. ES3-3013_Dec14)	Dec-15
DAE4	SN: 660	14-Jan-15 (No. DAE4-660_Jan15)	Jan-16
Secondary Standards	ID	Check Date (in house)	Scheduled Check
RF generator HP 8648C	US3642U01700	4-Aug-99 (in house check Apr-13)	In house check: Apr-16
Network Analyzer HP 8753E	US37390585	18-Oct-01 (in house check Oct-15)	In house check: Oct-16

	Name	Function	Signature
Calibrated by:	Israe Elnaouq	Laboratory Technician	
Approved by:	Katja Pokovic	Technical Manager	

Issued: October 22, 2015

This calibration certificate shall not be reproduced except in full without written approval of the laboratory.

Certificate No: EX3-3619\_Oct15

Page 1 of 11

**Calibration Laboratory of  
Schmid & Partner  
Engineering AG**  
Zeughausstrasse 43, 8004 Zurich, Switzerland



**S** Schweizerischer Kalibrierdienst  
**C** Service suisse d'étalonnage  
**S** Servizio svizzero di taratura  
**S** Swiss Calibration Service

Accredited by the Swiss Accreditation Service (SAS)

The Swiss Accreditation Service is one of the signatories to the EA  
Multilateral Agreement for the recognition of calibration certificates

Accreditation No.: **SCS 0108**

#### Glossary:

TSL	tissue simulating liquid
NORM <sub>x,y,z</sub>	sensitivity in free space
ConvF	sensitivity in TSL / NORM <sub>x,y,z</sub>
DCP	diode compression point
CF	crest factor (1/duty_cycle) of the RF signal
A, B, C, D	modulation dependent linearization parameters
Polarization $\varphi$	$\varphi$ rotation around probe axis
Polarization $\vartheta$	$\vartheta$ rotation around an axis that is in the plane normal to probe axis (at measurement center), i.e., $\vartheta = 0$ is normal to probe axis
Connector Angle	information used in DASY system to align probe sensor X to the robot coordinate system

#### Calibration is Performed According to the Following Standards:

- IEEE Std 1528-2013, "IEEE Recommended Practice for Determining the Peak Spatial-Averaged Specific Absorption Rate (SAR) in the Human Head from Wireless Communications Devices: Measurement Techniques", June 2013
- IEC 62209-1, "Procedure to measure the Specific Absorption Rate (SAR) for hand-held devices used in close proximity to the ear (frequency range of 300 MHz to 3 GHz)", February 2005
- IEC 62209-2, "Procedure to determine the Specific Absorption Rate (SAR) for wireless communication devices used in close proximity to the human body (frequency range of 30 MHz to 6 GHz)", March 2010
- KDB 865664, "SAR Measurement Requirements for 100 MHz to 6 GHz"

#### Methods Applied and Interpretation of Parameters:

- NORM<sub>x,y,z</sub>**: Assessed for E-field polarization  $\vartheta = 0$  ( $f \leq 900$  MHz in TEM-cell;  $f > 1800$  MHz: R22 waveguide). NORM<sub>x,y,z</sub> are only intermediate values, i.e., the uncertainties of NORM<sub>x,y,z</sub> does not affect the E<sup>2</sup>-field uncertainty inside TSL (see below ConvF).
- NORM(f)<sub>x,y,z</sub> = NORM<sub>x,y,z</sub> \* frequency\_response** (see Frequency Response Chart). This linearization is implemented in DASY4 software versions later than 4.2. The uncertainty of the frequency response is included in the stated uncertainty of ConvF.
- DCP<sub>x,y,z</sub>**: DCP are numerical linearization parameters assessed based on the data of power sweep with CW signal (no uncertainty required). DCP does not depend on frequency nor media.
- PAR**: PAR is the Peak to Average Ratio that is not calibrated but determined based on the signal characteristics
- A<sub>x,y,z</sub>; B<sub>x,y,z</sub>; C<sub>x,y,z</sub>; D<sub>x,y,z</sub>; VR<sub>x,y,z</sub>**: A, B, C, D are numerical linearization parameters assessed based on the data of power sweep for specific modulation signal. The parameters do not depend on frequency nor media. VR is the maximum calibration range expressed in RMS voltage across the diode.
- ConvF and Boundary Effect Parameters**: Assessed in flat phantom using E-field (or Temperature Transfer Standard for  $f \leq 800$  MHz) and inside waveguide using analytical field distributions based on power measurements for  $f > 800$  MHz. The same setups are used for assessment of the parameters applied for boundary compensation (alpha, depth) of which typical uncertainty values are given. These parameters are used in DASY4 software to improve probe accuracy close to the boundary. The sensitivity in TSL corresponds to NORM<sub>x,y,z</sub> \* ConvF whereby the uncertainty corresponds to that given for ConvF. A frequency dependent ConvF is used in DASY version 4.4 and higher which allows extending the validity from  $\pm 50$  MHz to  $\pm 100$  MHz.
- Spherical isotropy (3D deviation from isotropy)**: in a field of low gradients realized using a flat phantom exposed by a patch antenna.
- Sensor Offset**: The sensor offset corresponds to the offset of virtual measurement center from the probe tip (on probe axis). No tolerance required.
- Connector Angle**: The angle is assessed using the information gained by determining the NORM<sub>x</sub> (no uncertainty required).

EX3DV4 – SN:3619

October 20, 2015

# Probe EX3DV4

## SN:3619

Manufactured: July 3, 2007  
Calibrated: October 20, 2015

Calibrated for DASY/EASY Systems  
(Note: non-compatible with DASY2 system!)

---

Certificate No: EX3-3619\_Oct15

Page 3 of 11

EX3DV4- SN:3619

October 20, 2015

### DASY/EASY - Parameters of Probe: EX3DV4 - SN:3619

#### Basic Calibration Parameters

	Sensor X	Sensor Y	Sensor Z	Unc (k=2)
Norm ( $\mu\text{V}/(\text{V}/\text{m})^2$ ) <sup>A</sup>	0.45	0.38	0.41	± 10.1 %
DCP (mV) <sup>B</sup>	99.0	99.2	98.8	

#### Modulation Calibration Parameters

UID	Communication System Name		A dB	B dB/μV	C	D dB	VR mV	Unc <sup>E</sup> (k=2)
0	CW	X	0.0	0.0	1.0	0.00	157.0	±3.8 %
		Y	0.0	0.0	1.0		142.9	
		Z	0.0	0.0	1.0		147.3	

The reported uncertainty of measurement is stated as the standard uncertainty of measurement multiplied by the coverage factor k=2, which for a normal distribution corresponds to a coverage probability of approximately 95%.

<sup>A</sup> The uncertainties of Norm X,Y,Z do not affect the E<sup>2</sup>-field uncertainty inside TSL (see Pages 5 and 6).  
<sup>B</sup> Numerical linearization parameter: uncertainty not required.  
<sup>E</sup> Uncertainty is determined using the max. deviation from linear response applying rectangular distribution and is expressed for the square of the field value.



EX3DV4- SN:3619

October 20, 2015

## DASY/EASY - Parameters of Probe: EX3DV4 - SN:3619

### Calibration Parameter Determined in Head Tissue Simulating Media

f (MHz) <sup>c</sup>	Relative Permittivity <sup>f</sup>	Conductivity (S/m) <sup>f</sup>	ConvF X	ConvF Y	ConvF Z	Alpha <sup>g</sup>	Depth <sup>g</sup> (mm)	Unc (k=2)
600	42.7	0.88	8.67	8.67	8.67	0.10	1.15	± 13.3 %
5250	35.9	4.71	4.26	4.26	4.26	0.35	1.80	± 13.1 %
5600	35.5	5.07	3.68	3.68	3.68	0.50	1.80	± 13.1 %
5800	35.3	5.27	3.77	3.77	3.77	0.50	1.80	± 13.1 %

<sup>c</sup> Frequency validity above 300 MHz of ± 100 MHz only applies for DASY v4.4 and higher (see Page 2), else it is restricted to ± 50 MHz. The uncertainty is the RSS of the ConvF uncertainty at calibration frequency and the uncertainty for the indicated frequency band. Frequency validity below 300 MHz is ± 10, 25, 40, 50 and 70 MHz for ConvF assessments at 30, 64, 128, 150 and 220 MHz respectively. Above 5 GHz frequency validity can be extended to ± 110 MHz.

<sup>f</sup> At frequencies below 3 GHz, the validity of tissue parameters ( $\epsilon$  and  $\sigma$ ) can be relaxed to ± 10% if liquid compensation formula is applied to measured SAR values. At frequencies above 3 GHz, the validity of tissue parameters ( $\epsilon$  and  $\sigma$ ) is restricted to ± 5%. The uncertainty is the RSS of the ConvF uncertainty for indicated target tissue parameters.

<sup>g</sup> Alpha/Depth are determined during calibration. SPEAG warrants that the remaining deviation due to the boundary effect after compensation is always less than ± 1% for frequencies below 3 GHz and below ± 2% for frequencies between 3-6 GHz at any distance larger than half the probe tip diameter from the boundary.

EX3DV4- SN:3619

October 20, 2015

## DASY/EASY - Parameters of Probe: EX3DV4 - SN:3619

### Calibration Parameter Determined in Body Tissue Simulating Media

f (MHz) <sup>C</sup>	Relative Permittivity <sup>F</sup>	Conductivity (S/m) <sup>F</sup>	ConvF X	ConvF Y	ConvF Z	Alpha <sup>G</sup>	Depth <sup>G</sup> (mm)	Unc (k=2)
600	56.1	0.95	8.65	8.65	8.65	0.10	1.15	± 13.3 %
5250	48.9	5.36	3.80	3.80	3.80	0.50	1.90	± 13.1 %
5600	48.5	5.77	3.23	3.23	3.23	0.55	1.90	± 13.1 %
5800	48.2	6.00	3.54	3.54	3.54	0.55	1.90	± 13.1 %

<sup>C</sup> Frequency validity above 300 MHz of ± 100 MHz only applies for DASY v4.4 and higher (see Page 2), else it is restricted to ± 50 MHz. The uncertainty is the RSS of the ConvF uncertainty at calibration frequency and the uncertainty for the indicated frequency band. Frequency validity below 300 MHz is ± 10, 25, 40, 50 and 70 MHz for ConvF assessments at 30, 64, 128, 150 and 220 MHz respectively. Above 5 GHz frequency validity can be extended to ± 110 MHz.

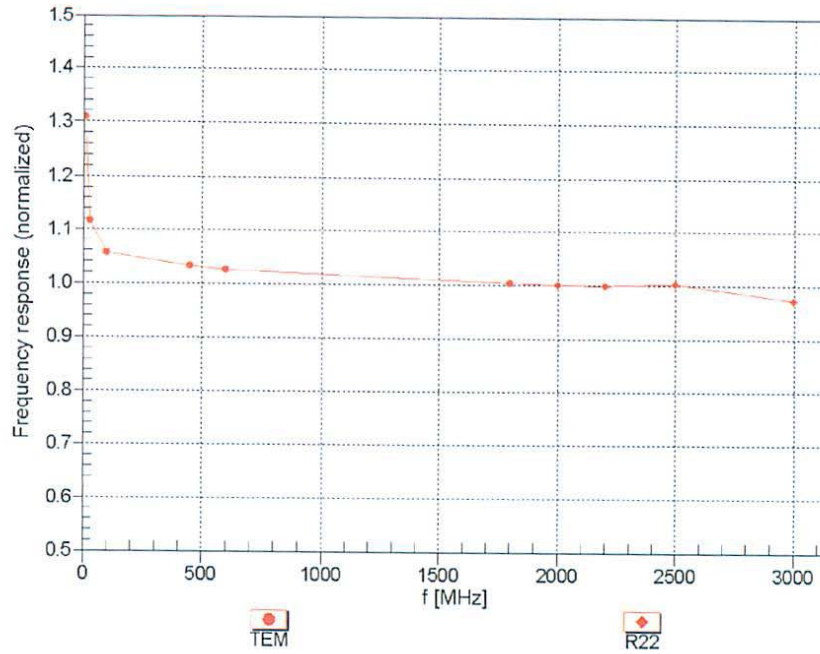
<sup>F</sup> At frequencies below 3 GHz, the validity of tissue parameters ( $\epsilon$  and  $\sigma$ ) can be relaxed to ± 10% if liquid compensation formula is applied to measured SAR values. At frequencies above 3 GHz, the validity of tissue parameters ( $\epsilon$  and  $\sigma$ ) is restricted to ± 5%. The uncertainty is the RSS of the ConvF uncertainty for indicated target tissue parameters.

<sup>G</sup> Alpha/Depth are determined during calibration. SPEAG warrants that the remaining deviation due to the boundary effect after compensation is always less than ± 1% for frequencies below 3 GHz and below ± 2% for frequencies between 3-6 GHz at any distance larger than half the probe tip diameter from the boundary.

EX3DV4- SN:3619

October 20, 2015

### Frequency Response of E-Field (TEM-Cell: ifi110 EXX, Waveguide: R22)



Uncertainty of Frequency Response of E-field:  $\pm 6.3\%$  (k=2)

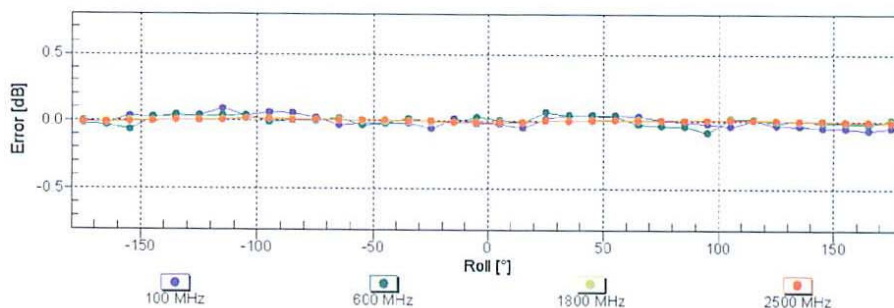
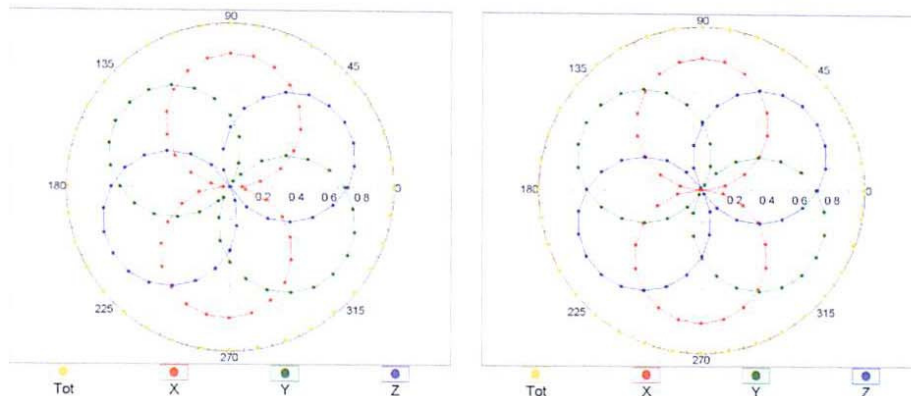
EX3DV4- SN:3619

October 20, 2015

### Receiving Pattern ( $\phi$ ), $\theta = 0^\circ$

f=600 MHz,TEM

f=1800 MHz,R22

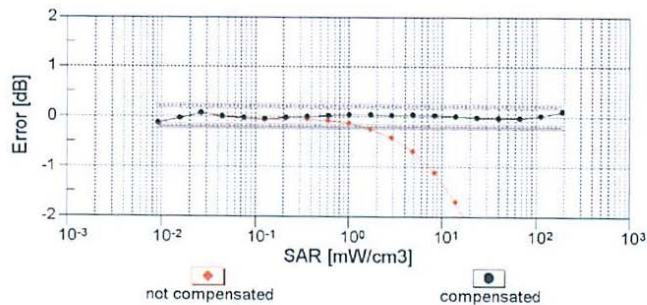
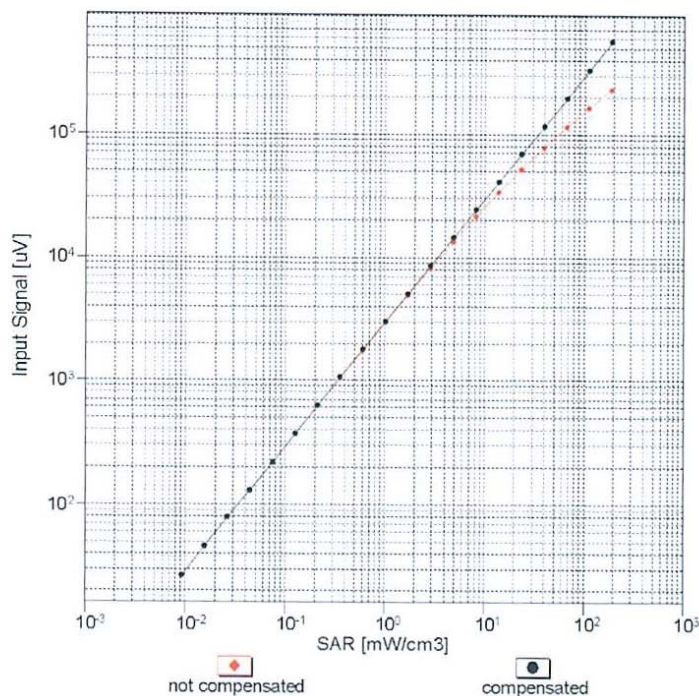


Uncertainty of Axial Isotropy Assessment:  $\pm 0.5\%$  (k=2)

EX3DV4- SN:3619

October 20, 2015

### Dynamic Range $f(SAR_{head})$ (TEM cell, $f_{eval} = 1900$ MHz)

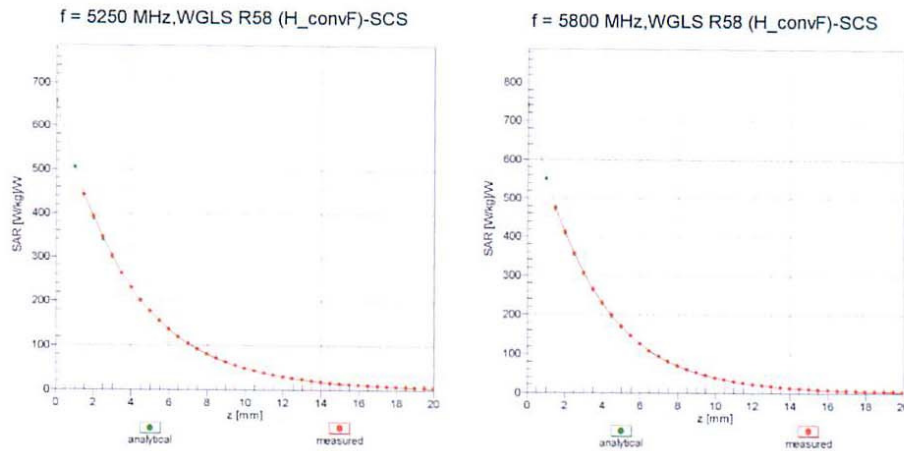


Uncertainty of Linearity Assessment:  $\pm 0.6\%$  ( $k=2$ )

EX3DV4- SN:3619

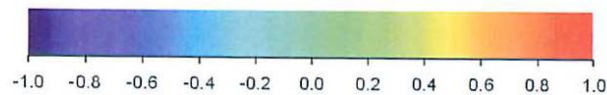
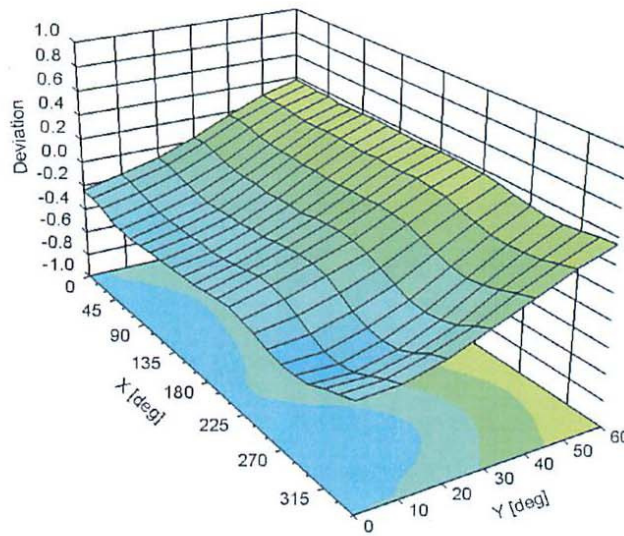
October 20, 2015

### Conversion Factor Assessment



### Deviation from Isotropy in Liquid

Error ( $\phi, \theta$ ),  $f = 900$  MHz



Uncertainty of Spherical Isotropy Assessment:  $\pm 2.6\%$  ( $k=2$ )

EX3DV4- SN:3619

October 20, 2015

**DASY/EASY - Parameters of Probe: EX3DV4 - SN:3619****Other Probe Parameters**

Sensor Arrangement	Triangular
Connector Angle (°)	25.3
Mechanical Surface Detection Mode	enabled
Optical Surface Detection Mode	disabled
Probe Overall Length	337 mm
Probe Body Diameter	10 mm
Tip Length	9 mm
Tip Diameter	2.5 mm
Probe Tip to Sensor X Calibration Point	1 mm
Probe Tip to Sensor Y Calibration Point	1 mm
Probe Tip to Sensor Z Calibration Point	1 mm
Recommended Measurement Distance from Surface	1.4 mm



## 12 Appendix C – Dipole Calibration Certificates

**Calibration Laboratory of  
Schmid & Partner  
Engineering AG**  
Zeughausstrasse 43, 8004 Zurich, Switzerland



**S** Schweizerischer Kalibrierdienst  
**C** Service suisse d'étalonnage  
**S** Servizio svizzero di taratura  
**S** Swiss Calibration Service

Accredited by the Swiss Accreditation Service (SAS)  
The Swiss Accreditation Service is one of the signatories to the EA  
Multilateral Agreement for the recognition of calibration certificates

Accreditation No.: **SCS 0108**

Client **BACL**

Certificate No: **D600V3-1010\_Feb16**

### CALIBRATION CERTIFICATE

Object **D600V3 - SN: 1010**

Calibration procedure(s) **QA CAL-15.v8**  
Calibration procedure for dipole validation kits below 700 MHz

Calibration date: **February 11, 2016**

This calibration certificate documents the traceability to national standards, which realize the physical units of measurements (SI).  
The measurements and the uncertainties with confidence probability are given on the following pages and are part of the certificate.

All calibrations have been conducted in the closed laboratory facility: environment temperature ( $22 \pm 3$ )°C and humidity < 70%.

Calibration Equipment used (M&TE critical for calibration)

Primary Standards	ID #	Cal Date (Certificate No.)	Scheduled Calibration
Power meter E4419B	GB41293874	01-Apr-15 (No. 217-02128)	Mar-16
Power sensor E4412A	MY41496087	01-Apr-15 (No. 217-02128)	Mar-16
Reference 3 dB Attenuator	SN: S5054 (3c)	01-Apr-15 (No. 217-02129)	Mar-16
Reference 20 dB Attenuator	SN: S5058 (20k)	01-Apr-15 (No. 217-02131)	Mar-16
Type-N mismatch combination	SN: 5047.2 / 06327	01-Apr-15 (No. 217-02134)	Mar-16
Reference Probe ET3DV6	SN: 1507	31-Dec-15 (No. ET3-1507_Dec15)	Dec-16
DAE4	SN: 654	08-Jul-15 (No. DAE4-654_Jul15)	Jul-16
Secondary Standards	ID #	Check Date (in house)	Scheduled Check
RF generator HP 8648C	US3642U01700	04-Aug-99 (in house check Apr-13)	In house check: Apr-16
Network Analyzer HP 8753E	US37390585 S4206	18-Oct-01 (in house check Oct-15)	In house check: Oct-16

	Name	Function	Signature
Calibrated by:	Jeton Kastrati	Laboratory Technician	
Approved by:	Katja Pokovic	Technical Manager	

Issued: February 11, 2016

This calibration certificate shall not be reproduced except in full without written approval of the laboratory.

Certificate No: **D600V3-1010\_Feb16**

Page 1 of 8



**Calibration Laboratory of  
Schmid & Partner  
Engineering AG**  
Zeughausstrasse 43, 8004 Zurich, Switzerland



**S** Schweizerischer Kalibrierdienst  
**C** Service suisse d'étalonnage  
**S** Servizio svizzero di taratura  
**S** Swiss Calibration Service

Accredited by the Swiss Accreditation Service (SAS)  
The Swiss Accreditation Service is one of the signatories to the EA  
Multilateral Agreement for the recognition of calibration certificates

Accreditation No.: **SCS 0108**

#### Glossary:

TSL tissue simulating liquid  
ConvF sensitivity in TSL / NORM x,y,z  
N/A not applicable or not measured

#### Calibration is Performed According to the Following Standards:

- IEEE Std 1528-2013, "IEEE Recommended Practice for Determining the Peak Spatial-Averaged Specific Absorption Rate (SAR) in the Human Head from Wireless Communications Devices: Measurement Techniques", June 2013
- IEC 62209-1, "Procedure to measure the Specific Absorption Rate (SAR) for hand-held devices used in close proximity to the ear (frequency range of 300 MHz to 3 GHz)", February 2005
- IEC 62209-2, "Procedure to determine the Specific Absorption Rate (SAR) for wireless communication devices used in close proximity to the human body (frequency range of 30 MHz to 6 GHz)", March 2010
- KDB 865664, "SAR Measurement Requirements for 100 MHz to 6 GHz"

#### Additional Documentation:

- DASY4/5 System Handbook

#### Methods Applied and Interpretation of Parameters:

- Measurement Conditions:** Further details are available from the Validation Report at the end of the certificate. All figures stated in the certificate are valid at the frequency indicated.
- Antenna Parameters with TSL:** The dipole is mounted with the spacer to position its feed point exactly below the center marking of the flat phantom section, with the arms oriented parallel to the body axis.
- Feed Point Impedance and Return Loss:** These parameters are measured with the dipole positioned under the liquid filled phantom. The impedance stated is transformed from the measurement at the SMA connector to the feed point. The Return Loss ensures low reflected power. No uncertainty required.
- Electrical Delay:** One-way delay between the SMA connector and the antenna feed point. No uncertainty required.
- SAR measured:** SAR measured at the stated antenna input power.
- SAR normalized:** SAR as measured, normalized to an input power of 1 W at the antenna connector.
- SAR for nominal TSL parameters:** The measured TSL parameters are used to calculate the nominal SAR result.

The reported uncertainty of measurement is stated as the standard uncertainty of measurement multiplied by the coverage factor  $k=2$ , which for a normal distribution corresponds to a coverage probability of approximately 95%.

**Measurement Conditions**

DASY system configuration, as far as not given on page 1.

DASY Version	DASY5	V52.8.8
Extrapolation	Advanced Extrapolation	
Phantom	ELI4 Flat Phantom	Shell thickness: $2 \pm 0.2$ mm
Distance Dipole Center - TSL	15 mm	with Spacer
Zoom Scan Resolution	dx, dy, dz = 5 mm	
Frequency	600 MHz $\pm$ 1 MHz	

**Head TSL parameters**

The following parameters and calculations were applied.

	Temperature	Permittivity	Conductivity
Nominal Head TSL parameters	22.0 °C	42.7	0.88 mho/m
Measured Head TSL parameters	(22.0 $\pm$ 0.2) °C	42.7 $\pm$ 6 %	0.86 mho/m $\pm$ 6 %
Head TSL temperature change during test	< 0.5 °C	----	----

**SAR result with Head TSL**

SAR averaged over 1 cm <sup>3</sup> (1 g) of Head TSL	Condition	
SAR measured	250 mW input power	1.59 W/kg
SAR for nominal Head TSL parameters	normalized to 1W	6.47 W/kg $\pm$ 18.1 % (k=2)

SAR averaged over 10 cm <sup>3</sup> (10 g) of Head TSL	condition	
SAR measured	250 mW input power	1.04 W/kg
SAR for nominal Head TSL parameters	normalized to 1W	4.22 W/kg $\pm$ 17.6 % (k=2)

**Body TSL parameters**

The following parameters and calculations were applied.

	Temperature	Permittivity	Conductivity
Nominal Body TSL parameters	22.0 °C	56.1	0.95 mho/m
Measured Body TSL parameters	(22.0 $\pm$ 0.2) °C	55.8 $\pm$ 6 %	0.93 mho/m $\pm$ 6 %
Body TSL temperature change during test	< 0.5 °C	----	----

**SAR result with Body TSL**

SAR averaged over 1 cm <sup>3</sup> (1 g) of Body TSL	Condition	
SAR measured	250 mW input power	1.64 W/kg
SAR for nominal Body TSL parameters	normalized to 1W	6.66 W/kg $\pm$ 18.1 % (k=2)

SAR averaged over 10 cm <sup>3</sup> (10 g) of Body TSL	condition	
SAR measured	250 mW input power	1.07 W/kg
SAR for nominal Body TSL parameters	normalized to 1W	4.34 W/kg $\pm$ 17.6 % (k=2)

**Appendix (Additional assessments outside the scope of SCS 0108)****Antenna Parameters with Head TSL**

Impedance, transformed to feed point	56.9 $\Omega$ - 4.0 j $\Omega$
Return Loss	- 22.5 dB

**Antenna Parameters with Body TSL**

Impedance, transformed to feed point	52.5 $\Omega$ - 7.5 j $\Omega$
Return Loss	- 22.3 dB

**General Antenna Parameters and Design**

Electrical Delay (one direction)	1.151 ns
----------------------------------	----------

After long term use with 100W radiated power, only a slight warming of the dipole near the feedpoint can be measured.

The dipole is made of standard semirigid coaxial cable. The center conductor of the feeding line is directly connected to the second arm of the dipole. The antenna is therefore short-circuited for DC-signals. On some of the dipoles, small end caps are added to the dipole arms in order to improve matching when loaded according to the position as explained in the "Measurement Conditions" paragraph. The SAR data are not affected by this change. The overall dipole length is still according to the Standard.

No excessive force must be applied to the dipole arms, because they might bend or the soldered connections near the feedpoint may be damaged.

**Additional EUT Data**

Manufactured by	SPEAG
Manufactured on	December 22, 2015

**DASY5 Validation Report for Head TSL**

Date: 11.02.2016

Test Laboratory: SPEAG, Zurich, Switzerland

**DUT: Dipole 600 MHz; Type: D600V3; Serial: D600V3 - SN: 1010**

Communication System: UID 0 - CW; Frequency: 600 MHz

Medium parameters used:  $f = 600$  MHz;  $\sigma = 0.86$  S/m;  $\epsilon_r = 42.7$ ;  $\rho = 1000$  kg/m<sup>3</sup>

Phantom section: Flat Section

Measurement Standard: DASY5 (IEEE/IEC/ANSI C63.19-2011)

DASY52 Configuration:

- Probe: ET3DV6 - SN1507; ConvF(6.54, 6.54, 6.54); Calibrated: 31.12.2015;
- Sensor-Surface: 4mm (Mechanical Surface Detection)
- Electronics: DAE4 Sn654; Calibrated: 08.07.2015
- Phantom: ELI v4.0; Type: QDOVA001BB; Serial: TP:1003
- DASY52 52.8.8(1258); SEMCAD X 14.6.10(7372)

**Dipole Calibration for Head Tissue/Pin=250 mW, d=15mm/Zoom Scan (7x7x7)/Cube 0:**

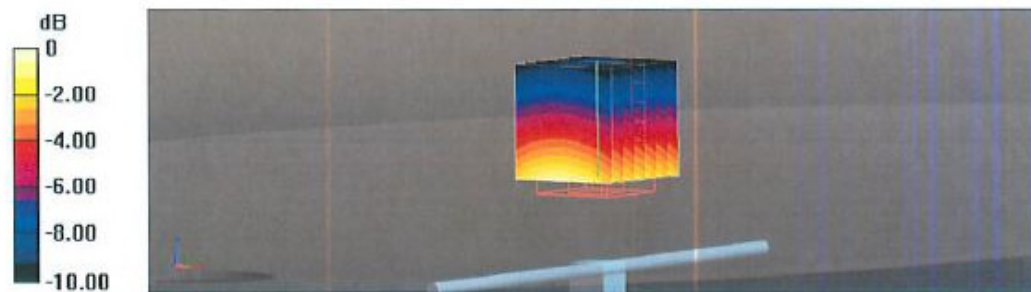
Measurement grid: dx=5mm, dy=5mm, dz=5mm

Reference Value = 45.65 V/m; Power Drift = -0.01 dB

Peak SAR (extrapolated) = 2.53 W/kg

**SAR(1 g) = 1.59 W/kg; SAR(10 g) = 1.04 W/kg**

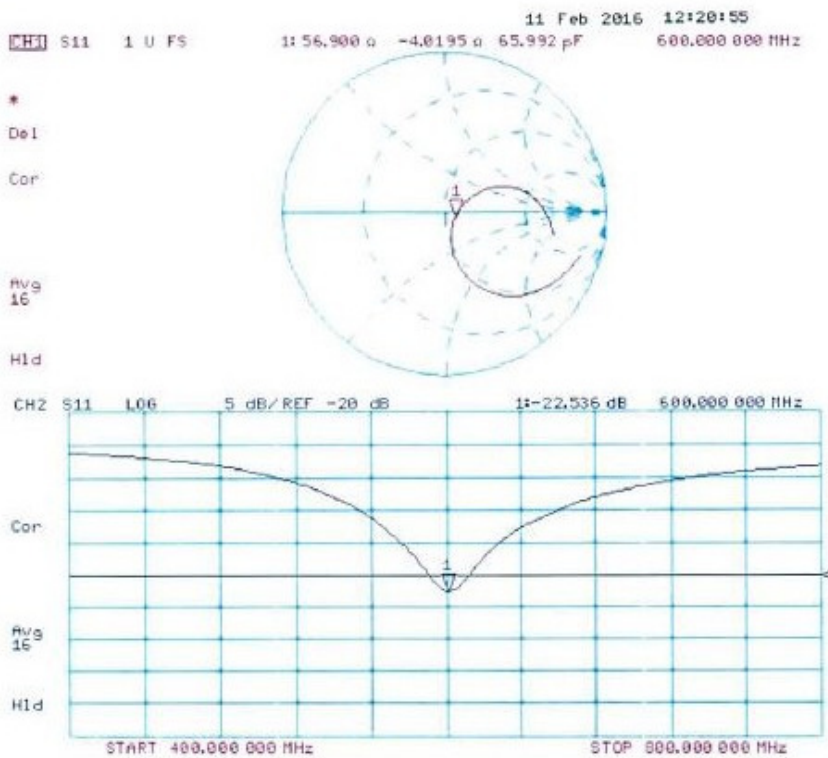
Maximum value of SAR (measured) = 1.70 W/kg



0 dB = 1.70 W/kg = 2.30 dBW/kg



### Impedance Measurement Plot for Head TSL



**DASY5 Validation Report for Body TSL**

Date: 11.02.2016

Test Laboratory: SPEAG, Zurich, Switzerland

**DUT: Dipole 600 MHz; Type: D600V3; Serial: D600V3 - SN: 1010**

Communication System: UID 0 - CW; Frequency: 600 MHz

Medium parameters used:  $f = 600$  MHz;  $\sigma = 0.93$  S/m;  $\epsilon_r = 55.8$ ;  $\rho = 1000$  kg/m<sup>3</sup>

Phantom section: Flat Section

Measurement Standard: DASY5 (IEEE/IEC/ANSI C63.19-2011)

DASY52 Configuration:

- Probe: ET3DV6 - SN1507; ConvF(6.5, 6.5, 6.5); Calibrated: 31.12.2015;
- Sensor-Surface: 4mm (Mechanical Surface Detection)
- Electronics: DAE4 Sn654; Calibrated: 08.07.2015
- Phantom: ELI v4.0; Type: QDOVA001BB; Serial: TP:1003
- DASY52 52.8.8(1258); SEMCAD X 14.6.10(7372)

**Dipole Calibration for Body Tissue/Pin=250 mW, d=15mm/Zoom Scan (7x7x7)/Cube 0:**

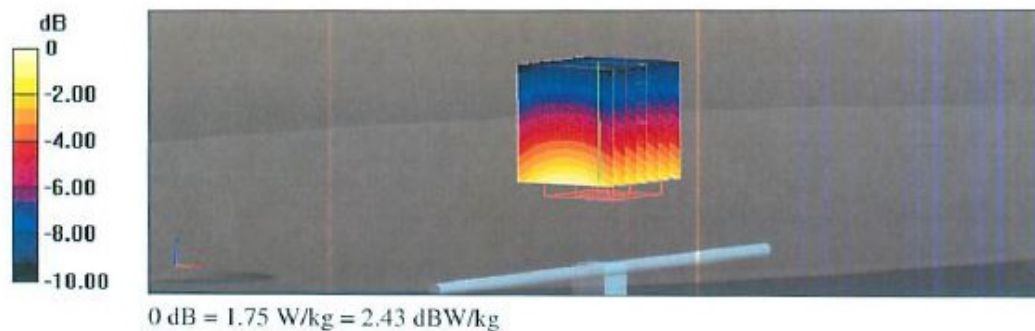
Measurement grid: dx=5mm, dy=5mm, dz=5mm

Reference Value = 44.43 V/m; Power Drift = -0.03 dB

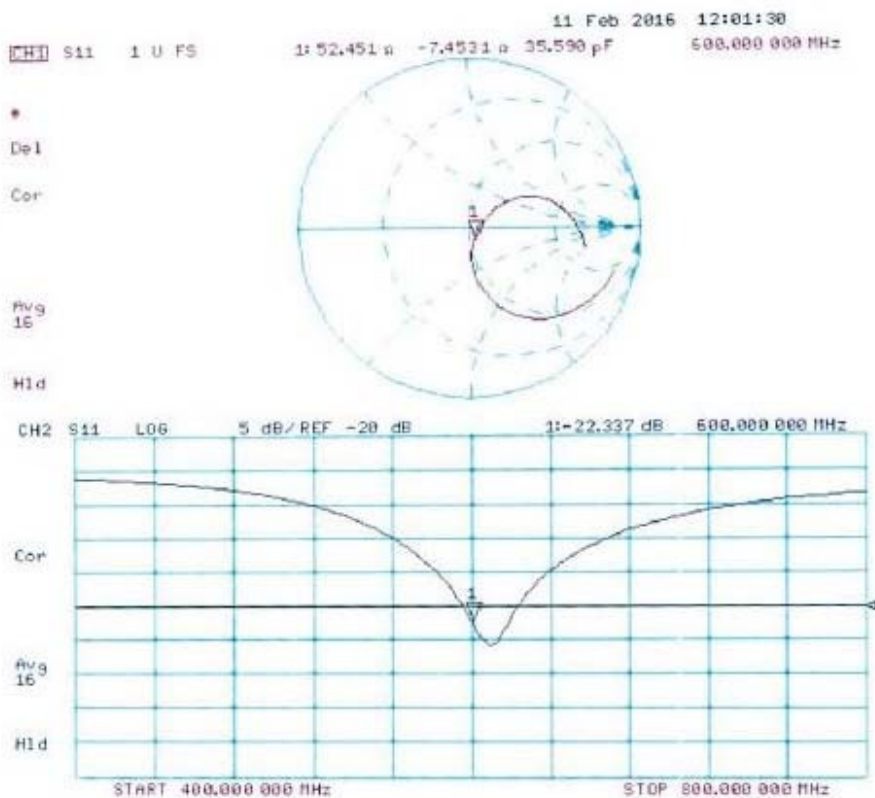
Peak SAR (extrapolated) = 2.61 W/kg

**SAR(1 g) = 1.64 W/kg; SAR(10 g) = 1.07 W/kg**

Maximum value of SAR (measured) = 1.75 W/kg



### Impedance Measurement Plot for Body TSL



## 13 Appendix D - Test System Verifications Scans

**Test Laboratory: Bay Area Compliance Lab Corp. (BACL)**

**600 MHz Body System Validation**

**DUT: Dipole 600 MHz; Type: D600V3; Serial: 1010**

Communication System: CW; Frequency: 600 MHz; Duty Cycle: 1:1

Medium parameters used:  $f = 600$  MHz;  $\sigma = 0.954$  mho/m;  $\epsilon_r = 57$ ;  $\rho = 1000$  kg/m<sup>3</sup>

Phantom section: Flat Section

DASY4 Configuration:

- Probe: EX3DV4 - SN3619; ConvF(8.65, 8.65, 8.65); Calibrated: 10/20/2015

- Sensor-Surface: 4mm (Mechanical Surface Detection)

- Electronics: DAE4 Sn530; Calibrated: 8/18/2015

- Phantom: SAM with CRP; Type: Twin SAM; Serial: TP-1032

- Measurement SW: DASY4, V4.7 Build 71; Postprocessing SW: SEMCAD, V1.8 Build 186

**d = 15 mm, Pin = 20 dBm/Area Scan (111x251x1):** Measurement grid: dx=8mm, dy=8mm

Maximum value of SAR (interpolated) = 0.740 mW/g

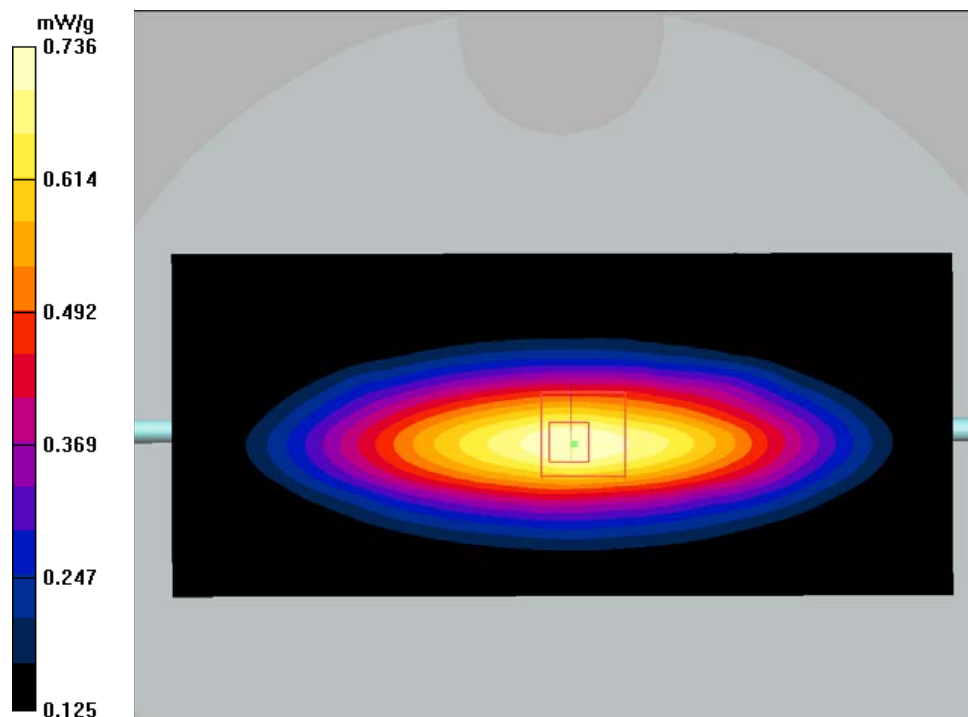
**d = 15 mm, Pin = 20 dBm/Zoom Scan (4x4x5)/Cube 0:** Measurement grid: dx=8mm, dy=8mm, dz=5mm

Reference Value = 27.3 V/m; Power Drift = 0.164 dB

Peak SAR (extrapolated) = 1.01 W/kg

**SAR (1 g) = 0.672 mW/g; SAR (10 g) = 0.432 mW/g**

Maximum value of SAR (measured) = 0.736 mW/g





## 14 Appendix E - EUT Scan Results

**Test Laboratory: Bay Area Compliance Lab Corp. (BACL)**

**Belt Clip Back Touch B1 Middle Channel 576 MHz**

**DUT: HMA-B1; Type: UHF Plug-on Transmitter; Serial: 2**

Communication System: 600 MHz; Frequency: 576 MHz; Duty Cycle: 1:1  
Medium parameters used:  $f = 576$  MHz;  $\sigma = 0.95$  mho/m;  $\epsilon_r = 57$ ;  $\rho = 1000$  kg/m<sup>3</sup>  
Phantom section: Flat Section

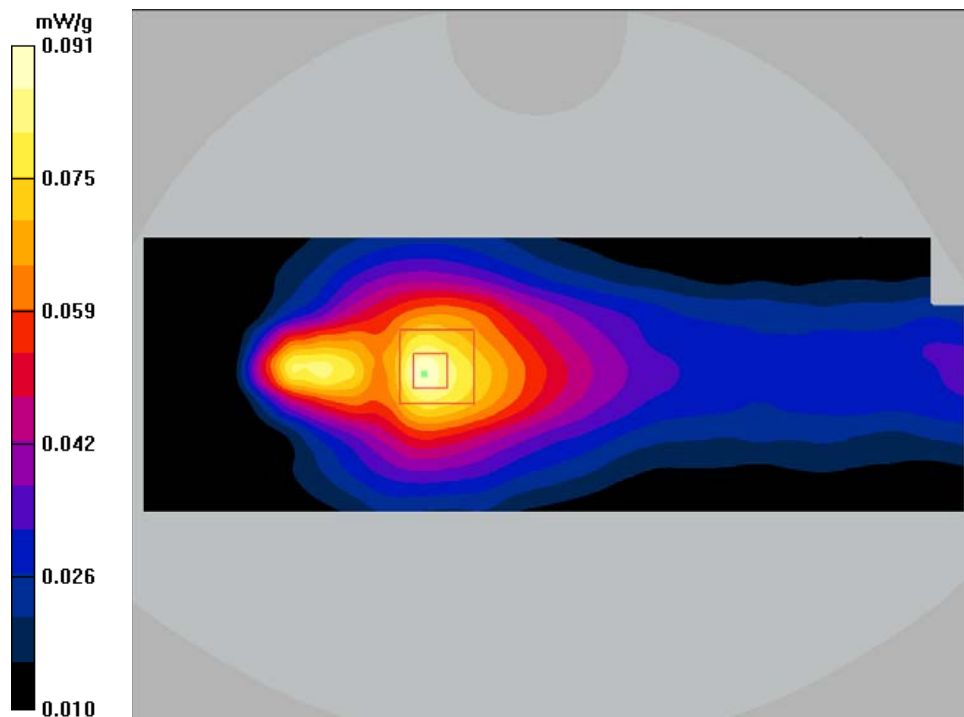
DASY4 Configuration:

- Probe: EX3DV4 - SN3619; ConvF(8.65, 8.65, 8.65); Calibrated: 10/20/2015
- Sensor-Surface: 4mm (Mechanical Surface Detection)
- Electronics: DAE4 Sn530; Calibrated: 8/18/2015
- Phantom: SAM with CRP; Type: Twin SAM; Serial: TP-1032
- Measurement SW: DASY4, V4.7 Build 71; Postprocessing SW: SEMCAD, V1.8 Build 186

**Back Touch Middle Channel/Area Scan (81x241x1):** Measurement grid: dx=10mm, dy=10mm  
Maximum value of SAR (interpolated) = 0.091 mW/g

**Back Touch Middle Channel/Zoom Scan (7x7x7)/Cube 0:** Measurement grid: dx=5mm, dy=5mm, dz=5mm  
Reference Value = 8.32 V/m; Power Drift = -0.574 dB  
Peak SAR (extrapolated) = 0.126 W/kg

**SAR (1 g) = 0.083 mW/g; SAR (10 g) = 0.056 mW/g**  
Maximum value of SAR (measured) = 0.091 mW/g



#1

**Test Laboratory: Bay Area Compliance Lab Corp. (BACL)**

**Configuration a - Front Touch B1 Middle Channel 576 MHz**

**DUT: HMA-B1; Type: UHF Plug-on Transmitter; Serial: 2**

Communication System: 600 MHz FM; Frequency: 576 MHz; Duty Cycle: 1:1  
Medium parameters used:  $f = 576$  MHz;  $\sigma = 0.95$  mho/m;  $\epsilon_r = 57$ ;  $\rho = 1000$  kg/m<sup>3</sup>  
Phantom section: Flat Section

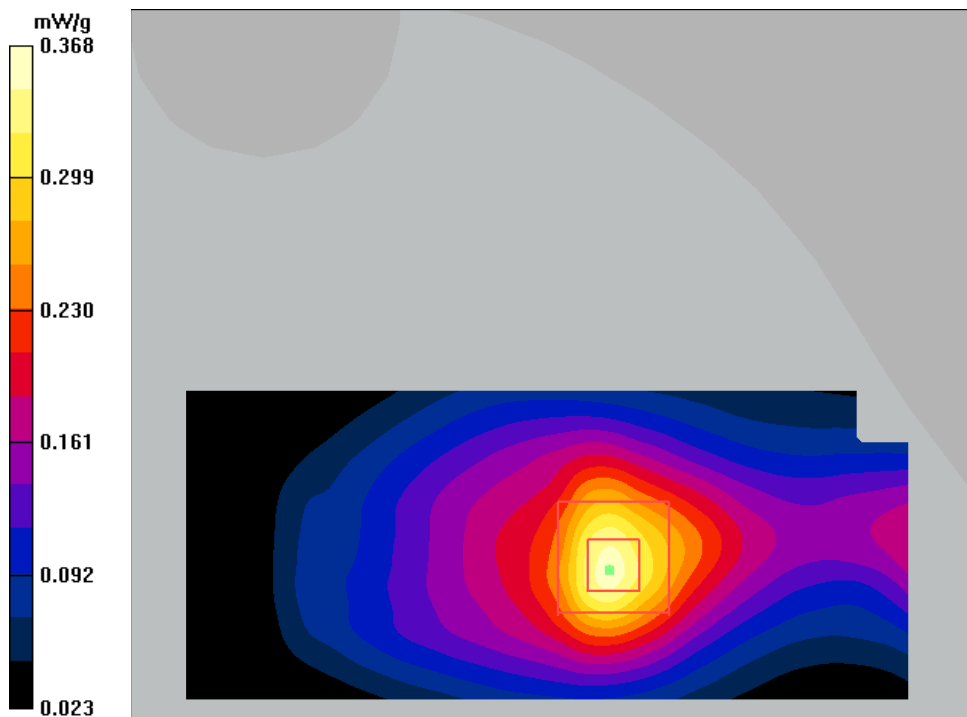
DASY4 Configuration:

- Probe: EX3DV4 - SN3619; ConvF(8.65, 8.65, 8.65); Calibrated: 10/20/2015
- Sensor-Surface: 4mm (Mechanical Surface Detection)
- Electronics: DAE4 Sn530; Calibrated: 8/18/2015
- Phantom: SAM with CRP; Type: Twin SAM; Serial: TP-1032
- Measurement SW: DASY4, V4.7 Build 71; Postprocessing SW: SEMCAD, V1.8 Build 186

**Front Touch Middle Channel/Area Scan (61x141x1):** Measurement grid: dx=10mm, dy=10mm  
Maximum value of SAR (interpolated) = 0.356 mW/g

**Front Touch Middle Channel/Zoom Scan (7x7x7)/Cube 0:** Measurement grid: dx=5mm, dy=5mm, dz=5mm  
Reference Value = 6.71 V/m; Power Drift = 0.086 dB  
Peak SAR (extrapolated) = 0.589 W/kg

**SAR (1 g) = 0.331 mW/g; SAR (10 g) = 0.197 mW/g**  
Maximum value of SAR (measured) = 0.368 mW/g



#2

**Test Laboratory: Bay Area Compliance Lab Corp. (BACL)****Configuration a - Back Touch B1 Middle Channel 576 MHz****DUT: HMA-B1; Type: UHF Plug-on Transmitter; Serial: 2**

Communication System: 600 MHz FM; Frequency: 576 MHz; Duty Cycle: 1:1  
Medium parameters used:  $f = 576$  MHz;  $\sigma = 0.95$  mho/m;  $\epsilon_r = 57$ ;  $\rho = 1000$  kg/m<sup>3</sup>  
Phantom section: Flat Section

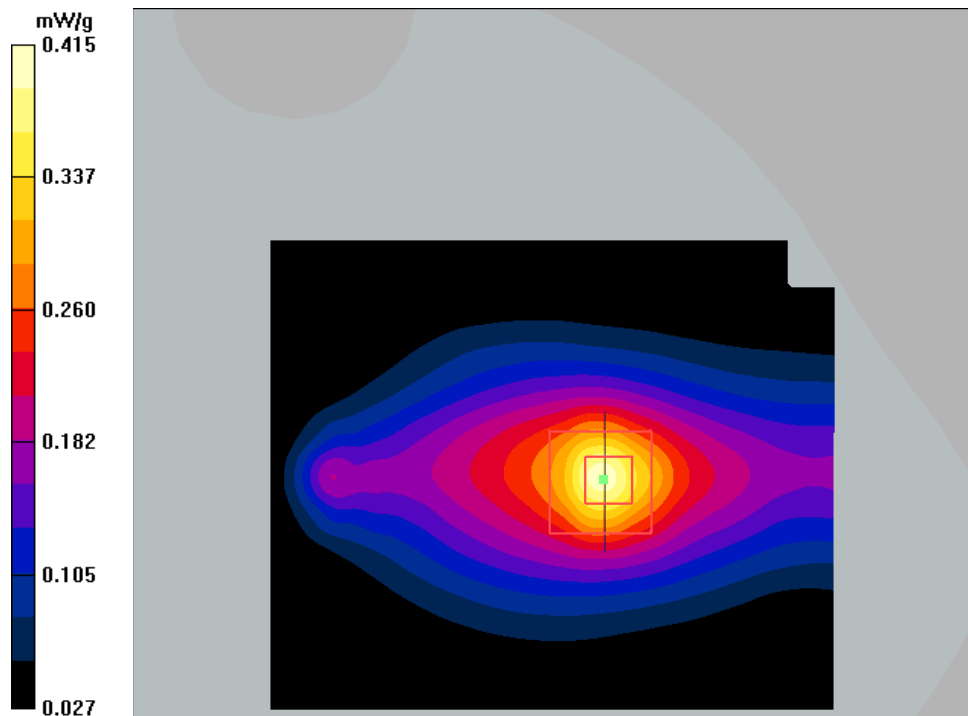
## DASY4 Configuration:

- Probe: EX3DV4 - SN3619; ConvF(8.65, 8.65, 8.65); Calibrated: 10/20/2015
- Sensor-Surface: 4mm (Mechanical Surface Detection)
- Electronics: DAE4 Sn530; Calibrated: 8/18/2015
- Phantom: SAM with CRP; Type: Twin SAM; Serial: TP-1032
- Measurement SW: DASY4, V4.7 Build 71; Postprocessing SW: SEMCAD, V1.8 Build 186

**Back Touch Middle Channel/Area Scan (101x121x1):** Measurement grid: dx=10mm, dy=10mm  
Maximum value of SAR (interpolated) = 0.403 mW/g

**Back Touch Middle Channel/Zoom Scan (7x7x7)/Cube 0:** Measurement grid: dx=5mm, dy=5mm, dz=5mm  
Reference Value = 9.90 V/m; Power Drift = -0.409 dB  
Peak SAR (extrapolated) = 0.668 W/kg

**SAR (1 g) = 0.370 mW/g; SAR (10 g) = 0.216 mW/g**  
Maximum value of SAR (measured) = 0.415 mW/g



#3

**Test Laboratory: Bay Area Compliance Lab Corp. (BACL)****Configuration a - Left Touch B1 Middle Channel 576 MHz****DUT: HMA-B1; Type: UHF Plug-on Transmitter; Serial: 2**

Communication System: 600 MHz FM; Frequency: 576 MHz; Duty Cycle: 1:1  
Medium parameters used:  $f = 576$  MHz;  $\sigma = 0.95$  mho/m;  $\epsilon_r = 57$ ;  $\rho = 1000$  kg/m<sup>3</sup>  
Phantom section: Flat Section

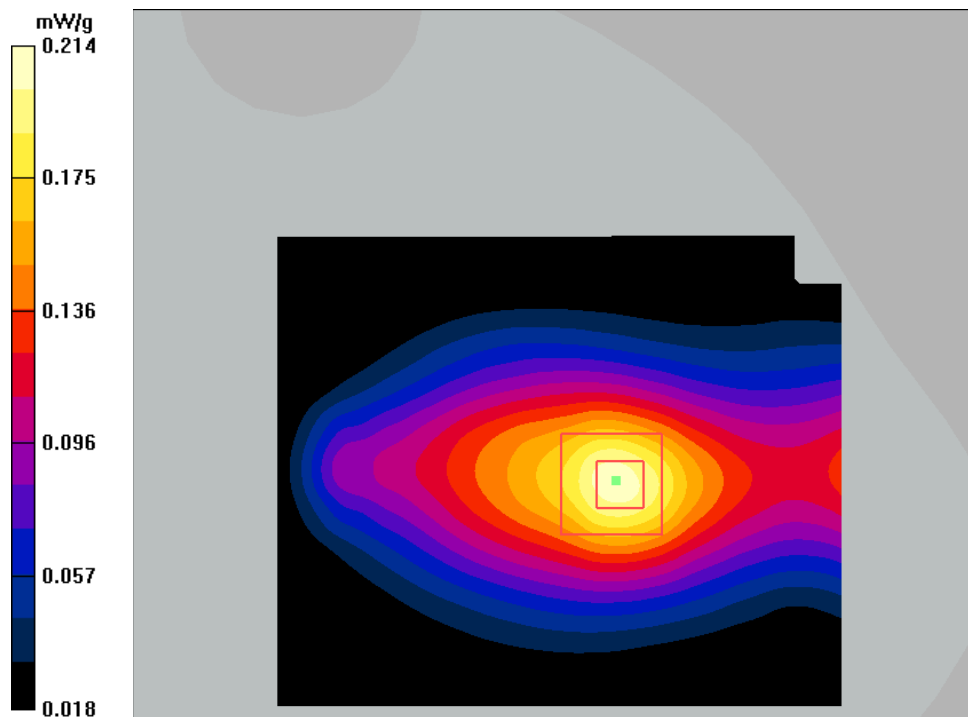
## DASY4 Configuration:

- Probe: EX3DV4 - SN3619; ConvF(8.65, 8.65, 8.65); Calibrated: 10/20/2015
- Sensor-Surface: 4mm (Mechanical Surface Detection)
- Electronics: DAE4 Sn530; Calibrated: 8/18/2015
- Phantom: SAM with CRP; Type: Twin SAM; Serial: TP-1032
- Measurement SW: DASY4, V4.7 Build 71; Postprocessing SW: SEMCAD, V1.8 Build 186

**Left Touch Middle Channel/Area Scan (101x121x1):** Measurement grid: dx=10mm, dy=10mm  
Maximum value of SAR (interpolated) = 0.209 mW/g

**Left Touch Middle Channel/Zoom Scan (7x7x7)/Cube 0:** Measurement grid: dx=5mm, dy=5mm, dz=5mm  
Reference Value = 6.87 V/m; Power Drift = 0.177 dB  
Peak SAR (extrapolated) = 0.304 W/kg

**SAR (1 g) = 0.195 mW/g; SAR (10 g) = 0.126 mW/g**  
Maximum value of SAR (measured) = 0.214 mW/g



#4

**Test Laboratory: Bay Area Compliance Lab Corp. (BACL)**

**Configuration a - Right Touch B1 Middle Channel 576 MHz**

**DUT: HMA-B1; Type: UHF Plug-on Transmitter; Serial: 2**

Communication System: 600 MHz FM; Frequency: 576 MHz; Duty Cycle: 1:1  
 Medium parameters used:  $f = 576$  MHz;  $\sigma = 0.95$  mho/m;  $\epsilon_r = 57$ ;  $\rho = 1000$  kg/m<sup>3</sup>  
 Phantom section: Flat Section

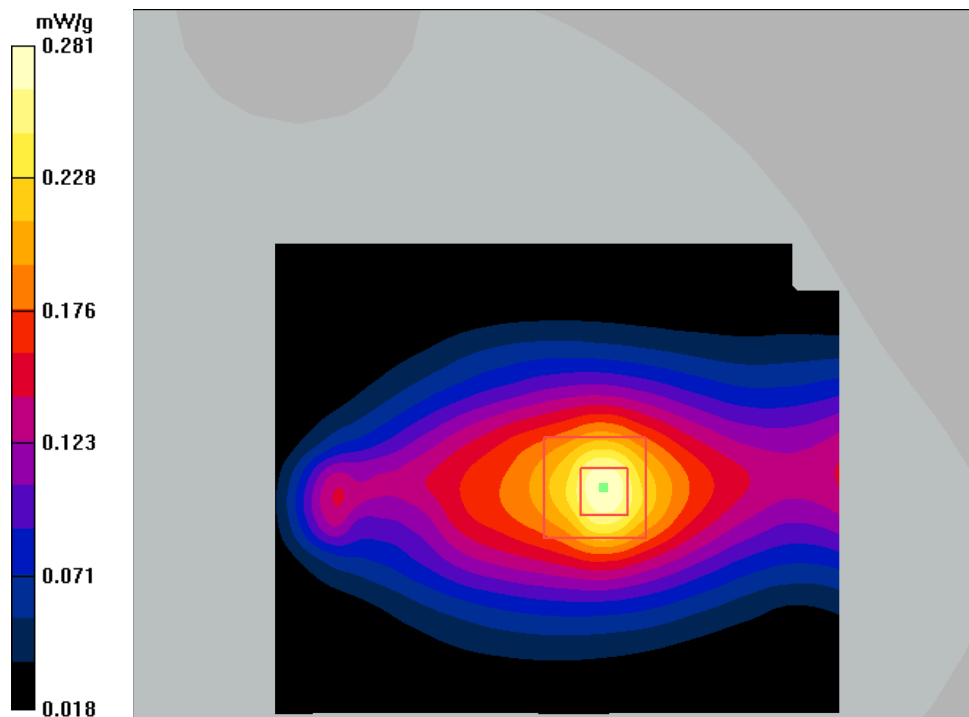
DASY4 Configuration:

- Probe: EX3DV4 - SN3619; ConvF(8.65, 8.65, 8.65); Calibrated: 10/20/2015
- Sensor-Surface: 4mm (Mechanical Surface Detection)
- Electronics: DAE4 Sn530; Calibrated: 8/18/2015
- Phantom: SAM with CRP; Type: Twin SAM; Serial: TP-1032
- Measurement SW: DASY4, V4.7 Build 71; Postprocessing SW: SEMCAD, V1.8 Build 186

**Right Touch Middle Channel/Area Scan (101x121x1):** Measurement grid: dx=10mm, dy=10mm  
 Maximum value of SAR (interpolated) = 0.280 mW/g

**Right Touch Middle Channel/Zoom Scan (7x7x7)/Cube 0:** Measurement grid: dx=5mm, dy=5mm, dz=5mm  
 Reference Value = 8.68 V/m; Power Drift = 0.670 dB  
 Peak SAR (extrapolated) = 0.434 W/kg

**SAR (1 g) = 0.251 mW/g; SAR (10 g) = 0.152 mW/g**  
 Maximum value of SAR (measured) = 0.281 mW/g



#5

**Test Laboratory: Bay Area Compliance Lab Corp. (BACL)**

**Configuration b - Front Touch B1 Middle Channel 576 MHz**

**DUT: HMA-B1; Type: UHF Plug-on Transmitter; Serial: 2**

Communication System: 600 MHz FM; Frequency: 576 MHz; Duty Cycle: 1:1  
 Medium parameters used:  $f = 576 \text{ MHz}$ ;  $\sigma = 0.95 \text{ mho/m}$ ;  $\epsilon_r = 57$ ;  $\rho = 1000 \text{ kg/m}^3$   
 Phantom section: Flat Section

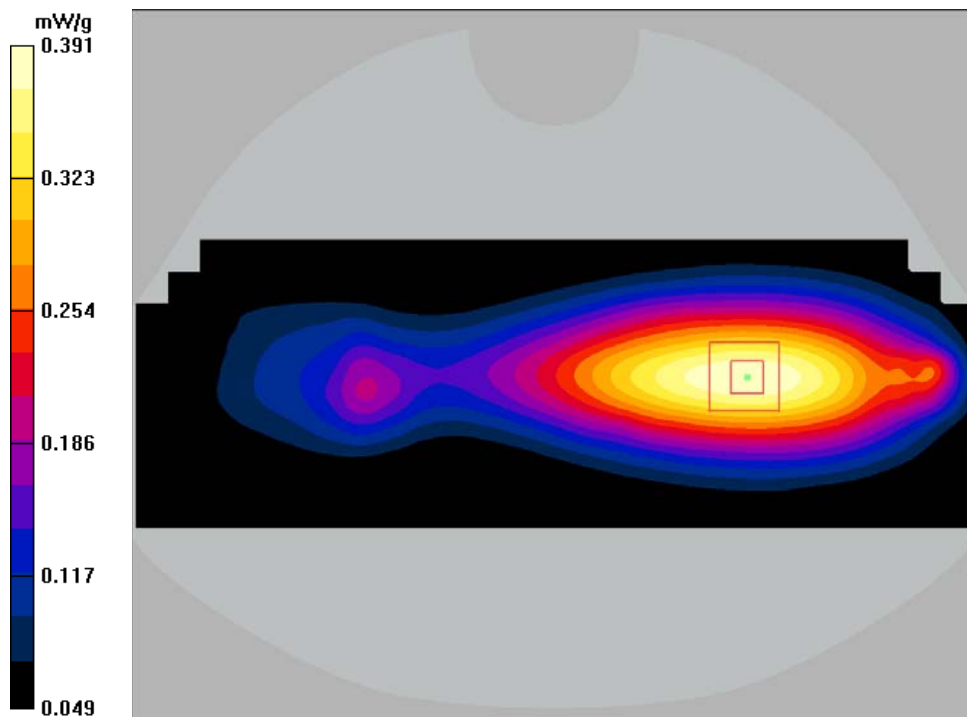
DASY4 Configuration:

- Probe: EX3DV4 - SN3619; ConvF(8.65, 8.65, 8.65); Calibrated: 10/20/2015
- Sensor-Surface: 4mm (Mechanical Surface Detection)
- Electronics: DAE4 Sn530; Calibrated: 8/18/2015
- Phantom: SAM with CRP; Type: Twin SAM; Serial: TP-1032
- Measurement SW: DASY4, V4.7 Build 71; Postprocessing SW: SEMCAD, V1.8 Build 186

**Front Touch Middle Channel/Area Scan (91x261x1):** Measurement grid:  $dx=10\text{mm}$ ,  $dy=10\text{mm}$   
 Maximum value of SAR (interpolated) = 0.390 mW/g

**Front Touch Middle Channel/Zoom Scan (7x7x7)/Cube 0:** Measurement grid:  $dx=5\text{mm}$ ,  $dy=5\text{mm}$ ,  $dz=5\text{mm}$   
 Reference Value = 15.5 V/m; Power Drift = 0.070 dB  
 Peak SAR (extrapolated) = 0.515 W/kg

**SAR (1 g) = 0.367 mW/g; SAR (10 g) = 0.255 mW/g**  
 Maximum value of SAR (measured) = 0.391 mW/g



#6

**Test Laboratory: Bay Area Compliance Lab Corp. (BACL)**

**Configuration b - Back Touch B1 Middle Channel 576 MHz**

**DUT: HMA-B1; Type: UHF Plug-on Transmitter; Serial: 2**

Communication System: 600 MHz FM; Frequency: 576 MHz; Duty Cycle: 1:1  
Medium parameters used:  $f = 576 \text{ MHz}$ ;  $\sigma = 0.95 \text{ mho/m}$ ;  $\epsilon_r = 57$ ;  $\rho = 1000 \text{ kg/m}^3$   
Phantom section: Flat Section

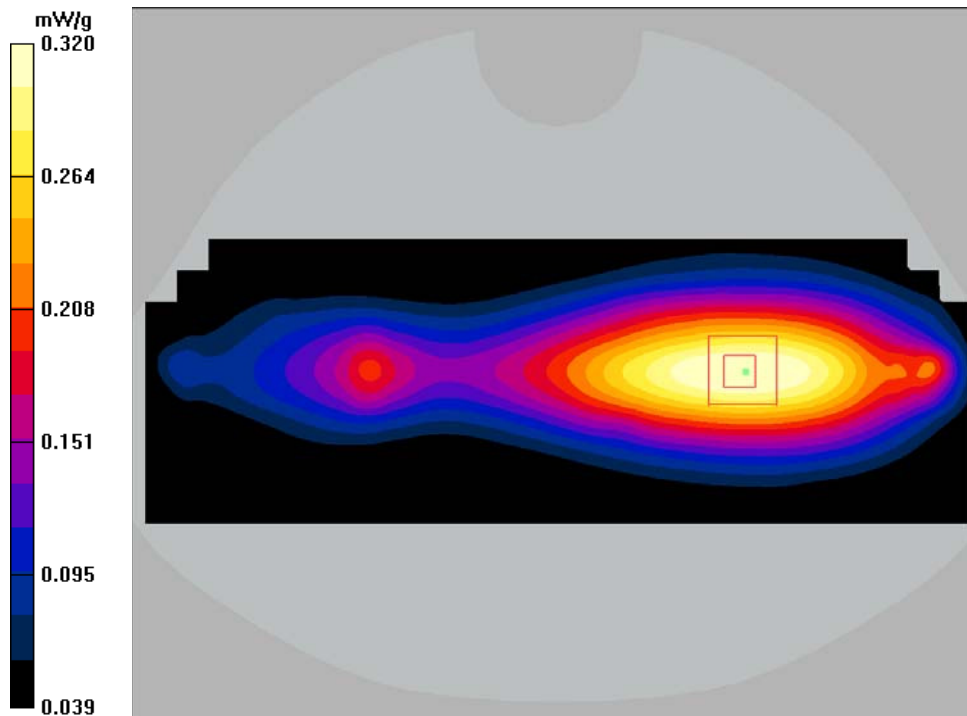
DASY4 Configuration:

- Probe: EX3DV4 - SN3619; ConvF(8.65, 8.65, 8.65); Calibrated: 10/20/2015
- Sensor-Surface: 4mm (Mechanical Surface Detection)
- Electronics: DAE4 Sn530; Calibrated: 8/18/2015
- Phantom: SAM with CRP; Type: Twin SAM; Serial: TP-1032
- Measurement SW: DASY4, V4.7 Build 71; Postprocessing SW: SEMCAD, V1.8 Build 186

**Back Touch Middle Channel/Area Scan (91x261x1):** Measurement grid:  $dx=10\text{mm}$ ,  $dy=10\text{mm}$   
Maximum value of SAR (interpolated) = 0.325 mW/g

**Back Touch Middle Channel/Zoom Scan (7x7x7)/Cube 0:** Measurement grid:  $dx=5\text{mm}$ ,  $dy=5\text{mm}$ ,  $dz=5\text{mm}$   
Reference Value = 16.5 V/m; Power Drift = -1.17 dB  
Peak SAR (extrapolated) = 0.423 W/kg

**SAR (1 g) = 0.300 mW/g; SAR (10 g) = 0.208 mW/g**  
Maximum value of SAR (measured) = 0.320 mW/g



#7

**Test Laboratory: Bay Area Compliance Lab Corp. (BACL)****Configuration b - Left Touch B1 Middle Channel 576 MHz****DUT: HMA-B1; Type: UHF Plug-on Transmitter; Serial: 2**

Communication System: 600 MHz FM; Frequency: 576 MHz; Duty Cycle: 1:1  
Medium parameters used:  $f = 576$  MHz;  $\sigma = 0.95$  mho/m;  $\epsilon_r = 57$ ;  $\rho = 1000$  kg/m<sup>3</sup>  
Phantom section: Flat Section

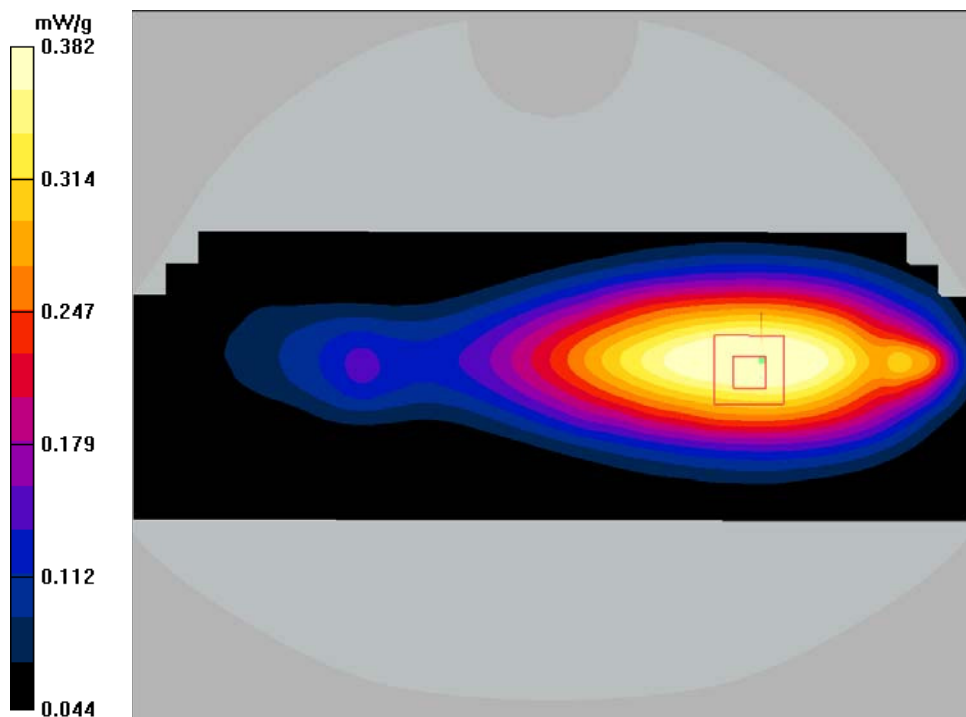
## DASY4 Configuration:

- Probe: EX3DV4 - SN3619; ConvF(8.65, 8.65, 8.65); Calibrated: 10/20/2015
- Sensor-Surface: 4mm (Mechanical Surface Detection)
- Electronics: DAE4 Sn530; Calibrated: 8/18/2015
- Phantom: SAM with CRP; Type: Twin SAM; Serial: TP-1032
- Measurement SW: DASY4, V4.7 Build 71; Postprocessing SW: SEMCAD, V1.8 Build 186

**Left Touch Middle Channel/Area Scan (91x261x1):** Measurement grid: dx=10mm, dy=10mm  
Maximum value of SAR (interpolated) = 0.407 mW/g

**Left Touch Middle Channel/Zoom Scan (7x7x7)/Cube 0:** Measurement grid: dx=5mm, dy=5mm, dz=5mm  
Reference Value = 15.6 V/m; Power Drift = -0.198 dB  
Peak SAR (extrapolated) = 0.498 W/kg

**SAR (1 g) = 0.357 mW/g; SAR (10 g) = 0.250 mW/g**  
Maximum value of SAR (measured) = 0.382 mW/g



#8



**Test Laboratory: Bay Area Compliance Lab Corp. (BACL)**

**Configuration b - Right Touch B1 Middle Channel 576 MHz**

**DUT: HMA-B1; Type: UHF Plug-on Transmitter; Serial: 2**

Communication System: 600 MHz FM; Frequency: 576 MHz; Duty Cycle: 1:1  
 Medium parameters used:  $f = 576$  MHz;  $\sigma = 0.95$  mho/m;  $\epsilon_r = 57$ ;  $\rho = 1000$  kg/m<sup>3</sup>  
 Phantom section: Flat Section

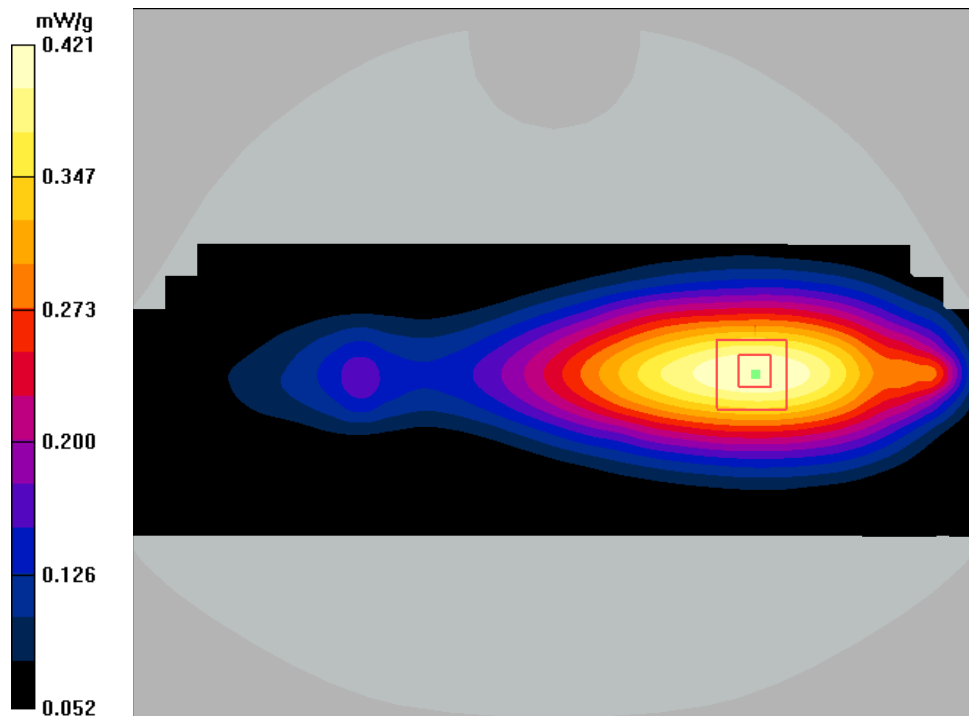
DASY4 Configuration:

- Probe: EX3DV4 - SN3619; ConvF(8.65, 8.65, 8.65); Calibrated: 10/20/2015
- Sensor-Surface: 4mm (Mechanical Surface Detection)
- Electronics: DAE4 Sn530; Calibrated: 8/18/2015
- Phantom: SAM with CRP; Type: Twin SAM; Serial: TP-1032
- Measurement SW: DASY4, V4.7 Build 71; Postprocessing SW: SEMCAD, V1.8 Build 186

**Right Touch Middle Channel/Area Scan (91x261x1):** Measurement grid: dx=10mm, dy=10mm  
 Maximum value of SAR (interpolated) = 0.421 mW/g

**Right Touch Middle Channel/Zoom Scan (7x7x7)/Cube 0:** Measurement grid: dx=5mm, dy=5mm, dz=5mm  
 Reference Value = 15.7 V/m; Power Drift = 0.041 dB  
 Peak SAR (extrapolated) = 0.553 W/kg

**SAR (1 g) = 0.394 mW/g; SAR (10 g) = 0.275 mW/g**  
 Maximum value of SAR (measured) = 0.421 mW/g

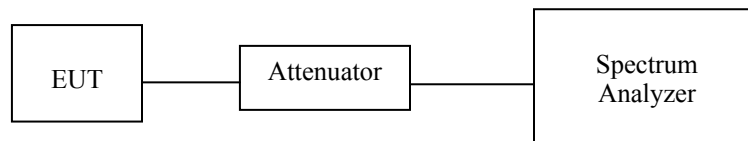


#9

## 15 Appendix F– Conducted Output Power Measurement

### 15.1 Test Block Diagram and Procedure

The RF output of the transmitter was connected to the input of the spectrum analyzer through sufficient attenuation.



### 15.2 Conducted Output Power

Channel	Frequency (MHz)	Conducted Output Power (dBm)	Rated Power (mW/dBm)
Low	537.6	16.76	50/17
		19.90	100/20
Middle	576	16.91	50/17
		19.90	100/20
High	614.3	16.74	50/17
		19.62	100/20