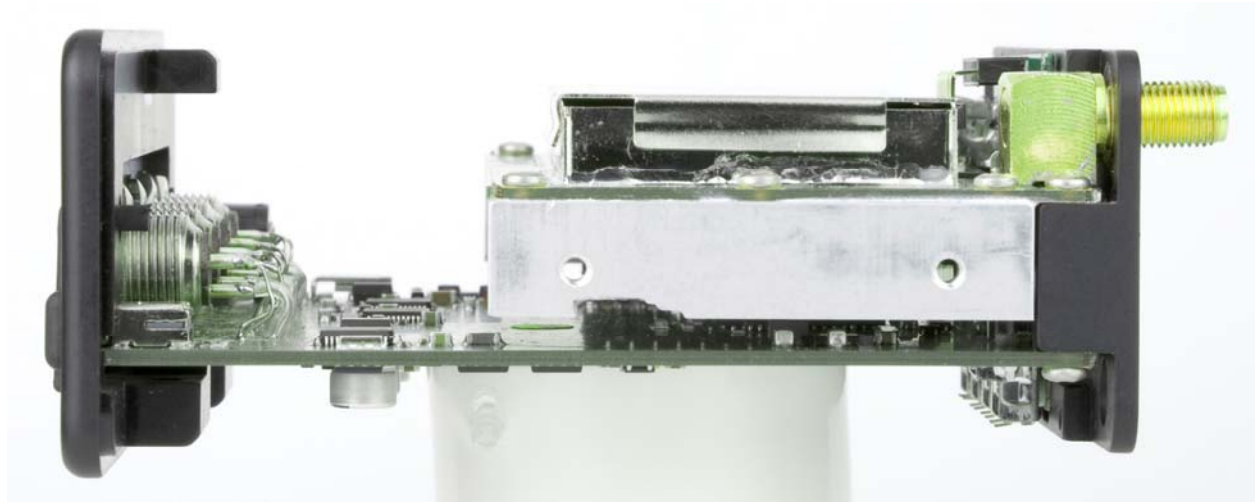


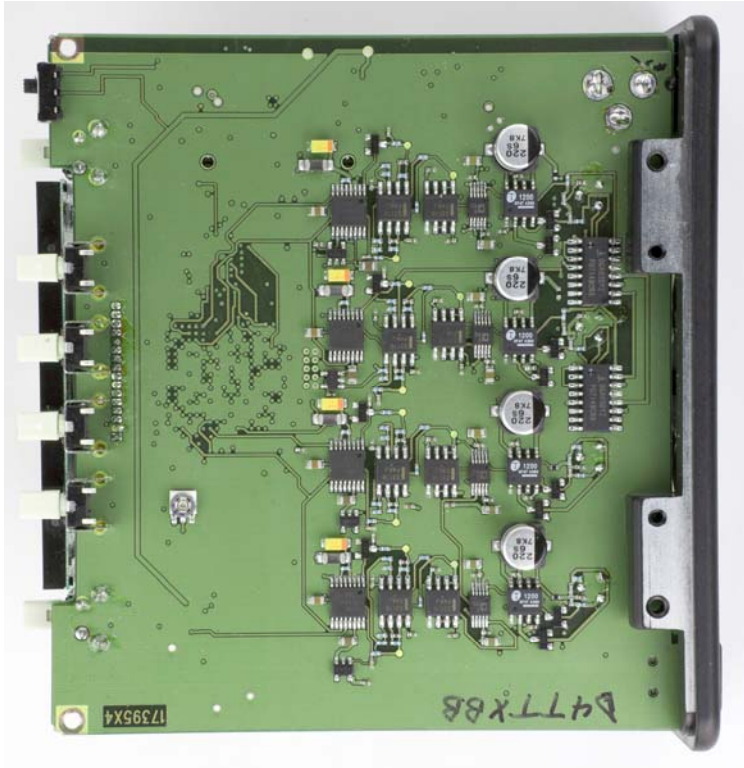
Internal photographs of board positions for D4T



RF Board with shield



Base Board

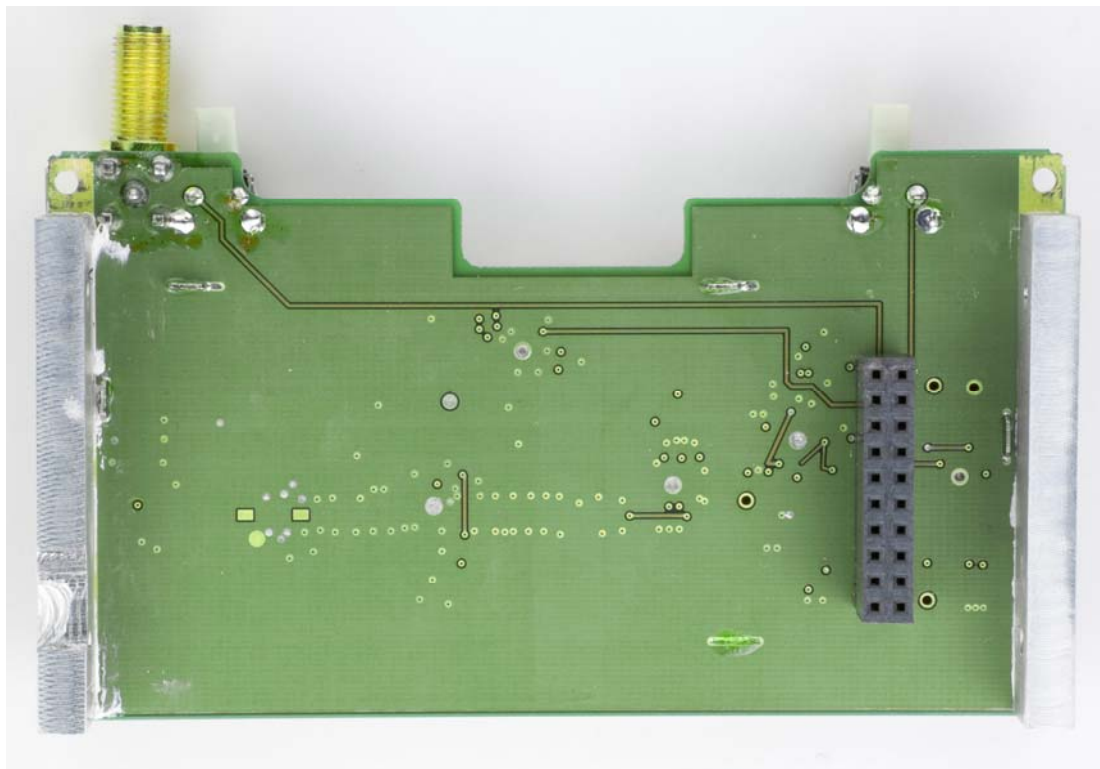
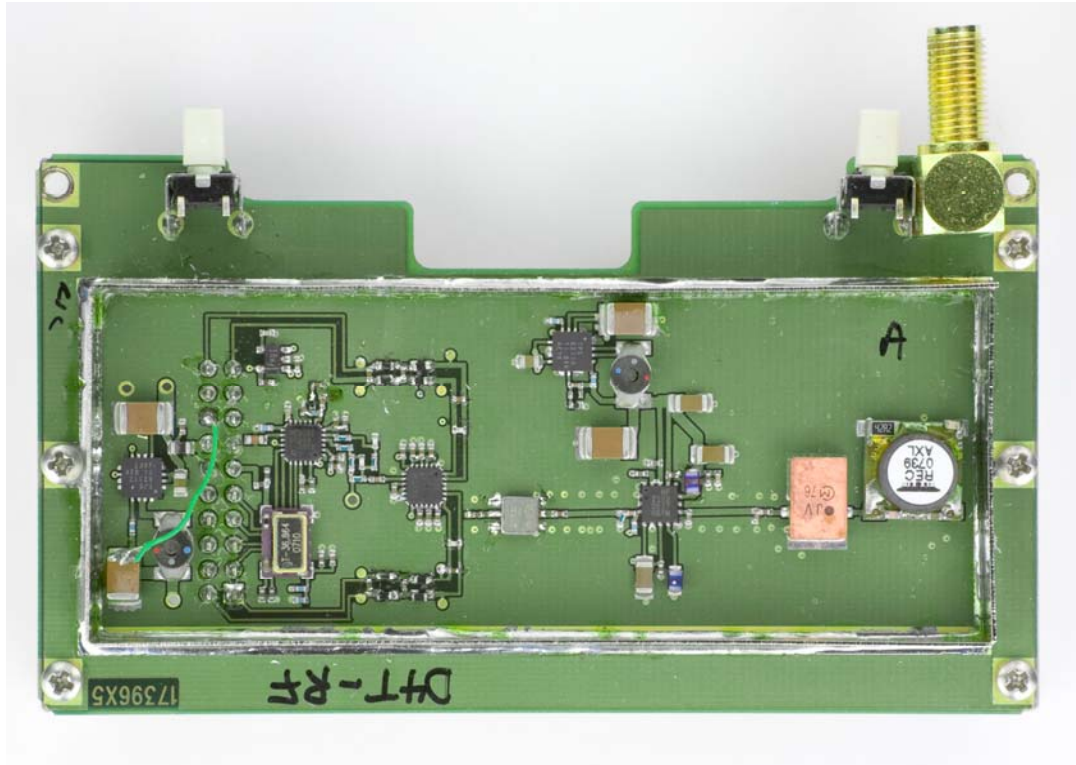


Rogers Labs, Inc.
4405 W. 259th Terrace
Louisburg, KS 66053
Phone/Fax: (913) 837-3214
Revision 1

Lectrosonics, Inc.
Model: D4T
Test #:090122T
Test to: CR47 Parts 2 and 15C, RSS-210
File: IntPho D4T

IC: 8024A-D4T
FCC ID: DBZD4T
SN: 005
Page 2 of 3
Date: 3/2/2009

RF Board



Rogers Labs, Inc.
4405 W. 259th Terrace
Louisburg, KS 66053
Phone/Fax: (913) 837-3214
Revision 1

Lectrosonics, Inc.
Model: D4T
Test #:090122T
Test to: CR47 Parts 2 and 15C, RSS-210
File: IntPho D4T

IC: 8024A-D4T
FCC ID: DBZD4T
SN: 005
Page 3 of 3
Date: 3/2/2009