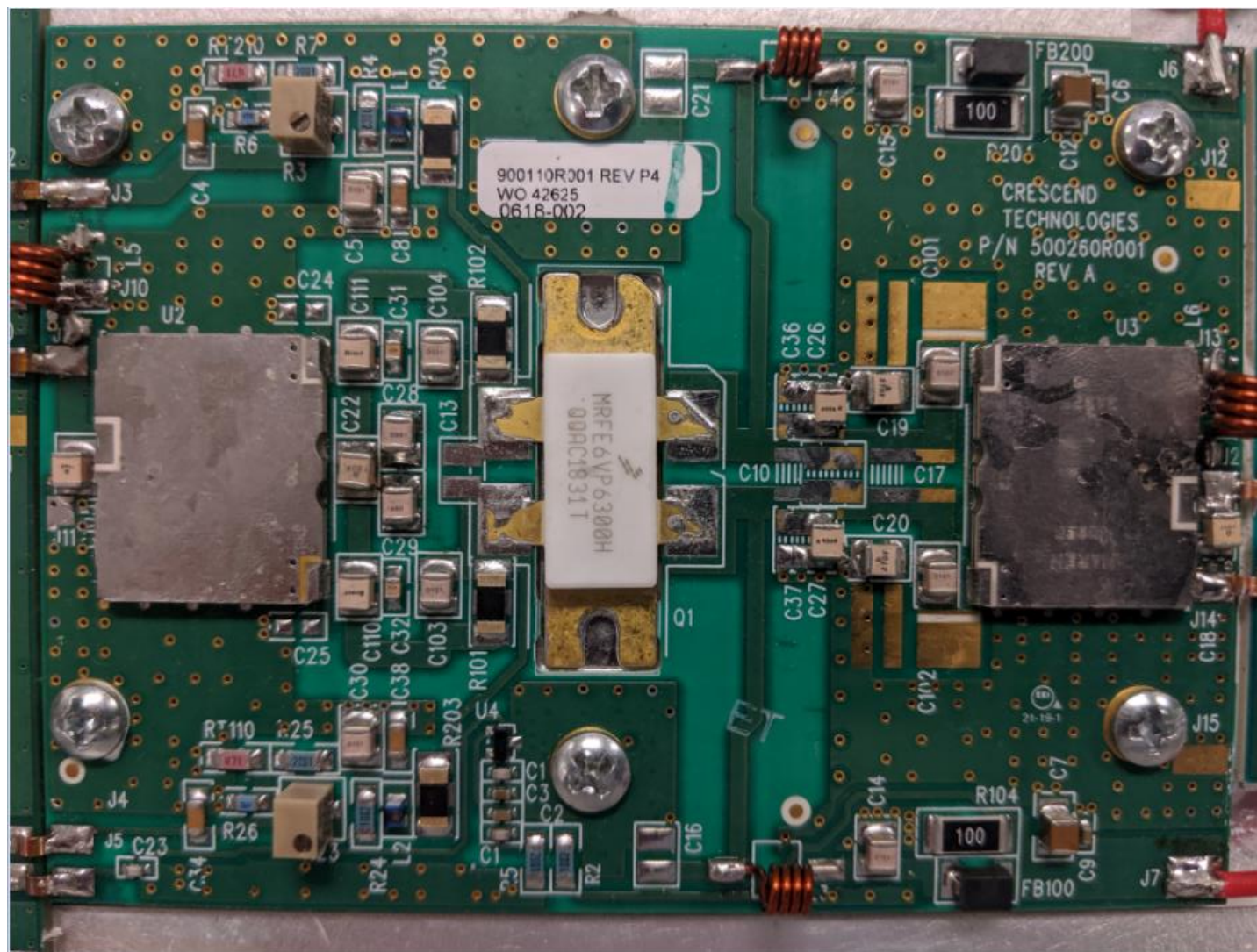
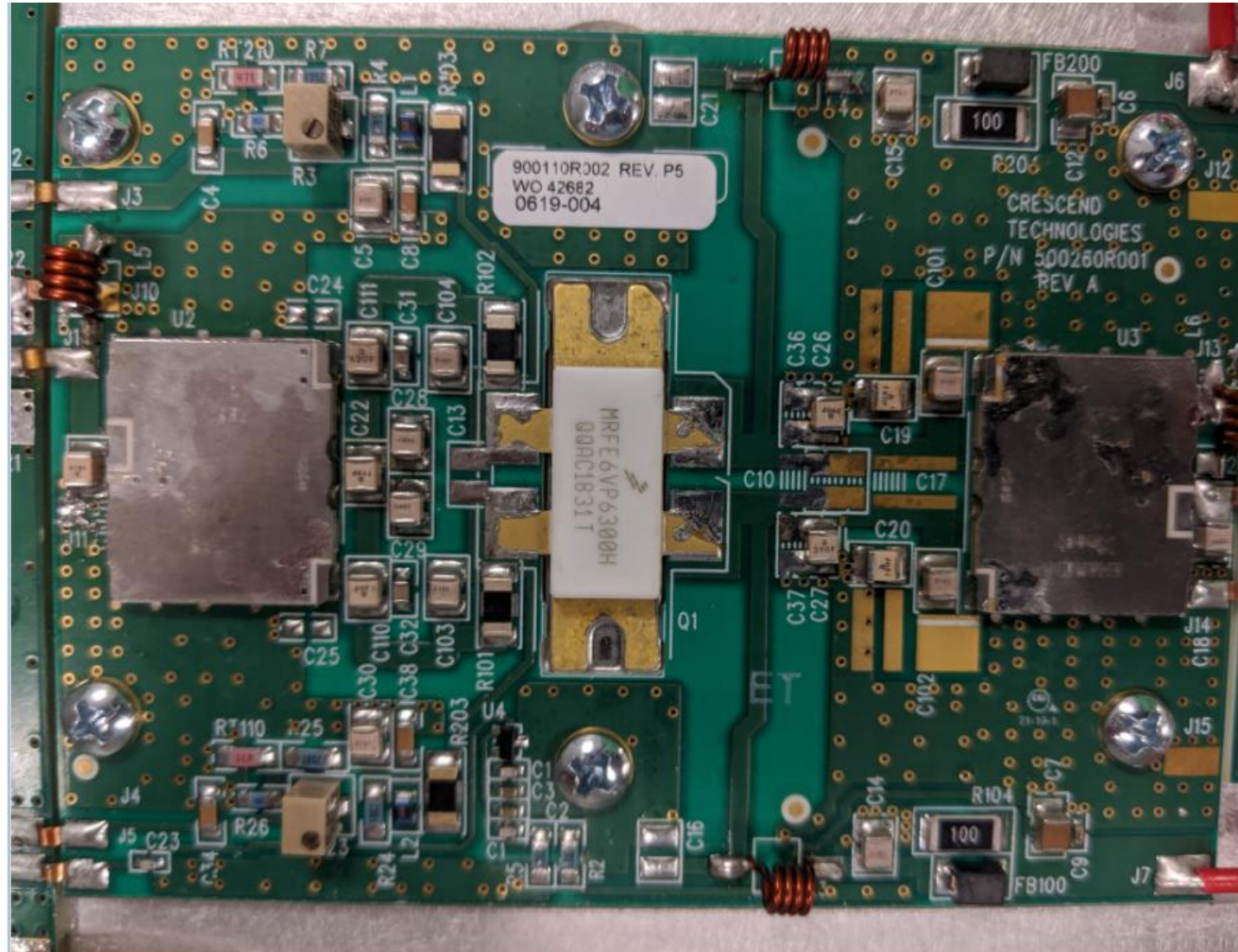


P25 UHF Low Band (406 – 420MHz) Pallet Board Top Side



## P25 UHF High Band (450 – 470MHz) Pallet Board Top Side

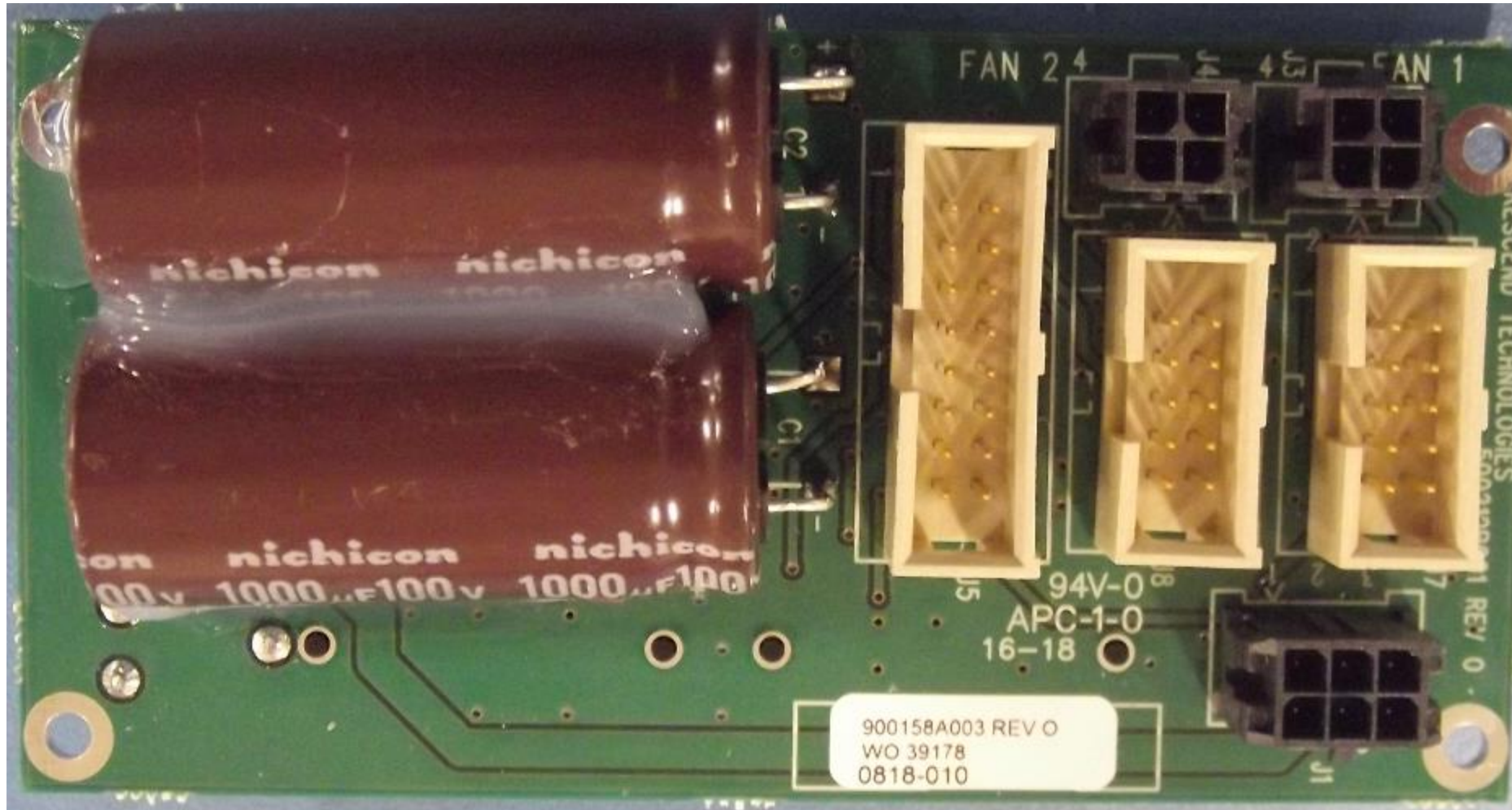


The two parts (to the left and the right) that appear to be metal shields are not - they are combiner/splitter components

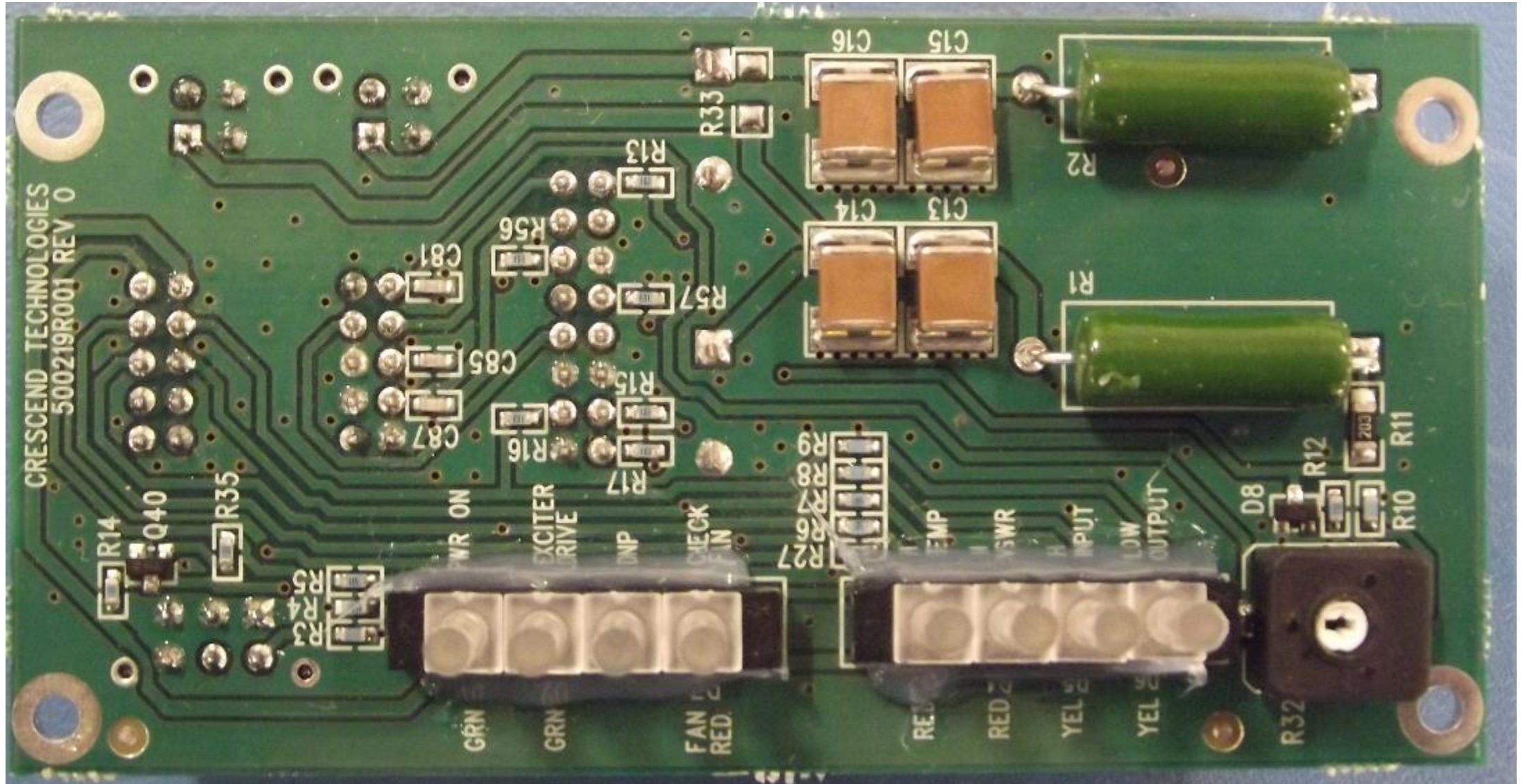
P25 UHF High & Low Band Pallet Board Bottom Side



P25 UHF High & Low Fan / LED Board Top Side



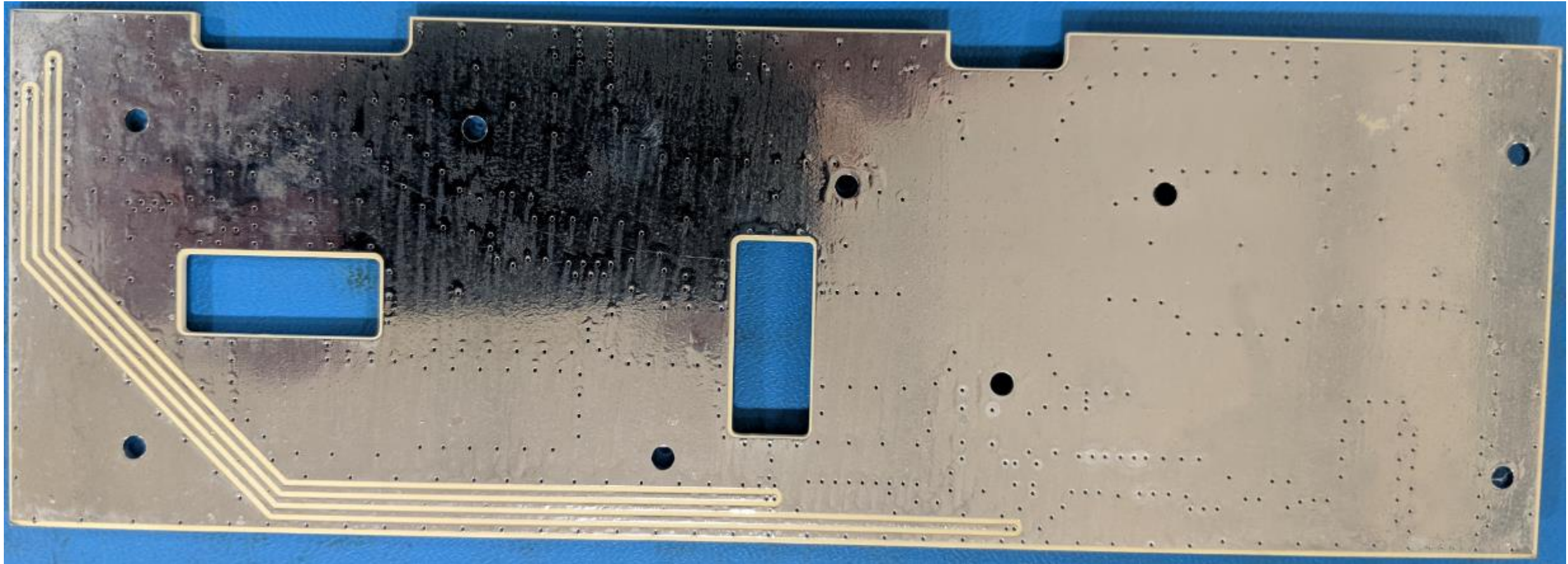
P25 UHF High & Low Fan / LED Board Bottom Side



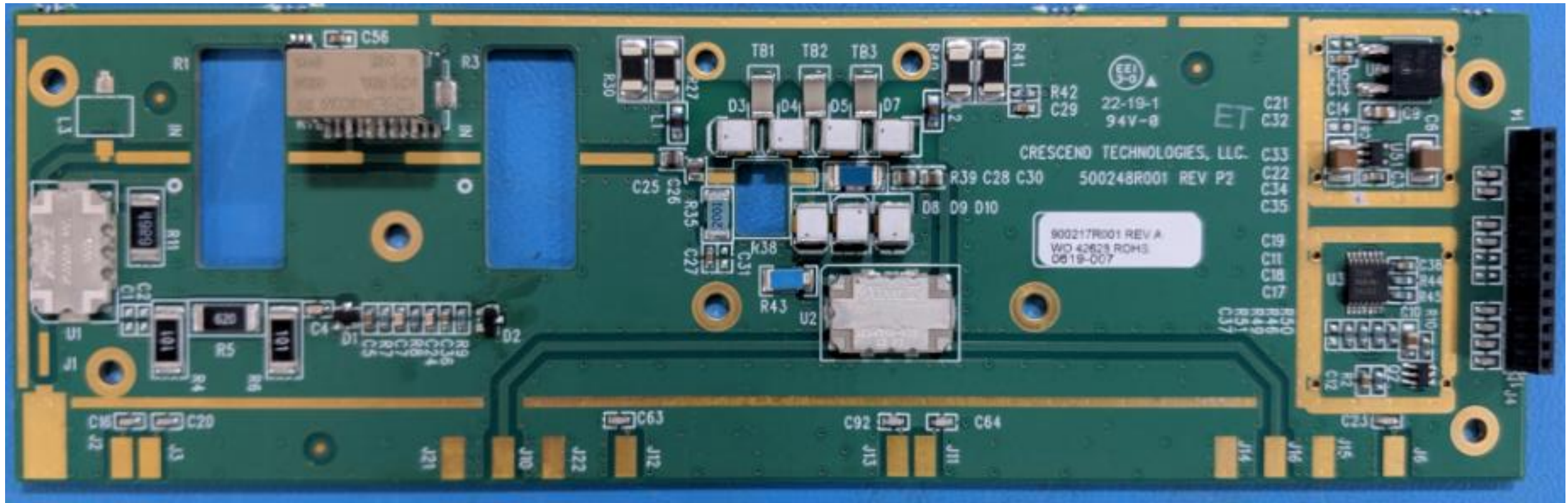
P25 UHF High & Low Output Board Top Side



P25 UHF High & Low Output Board Bottom Side

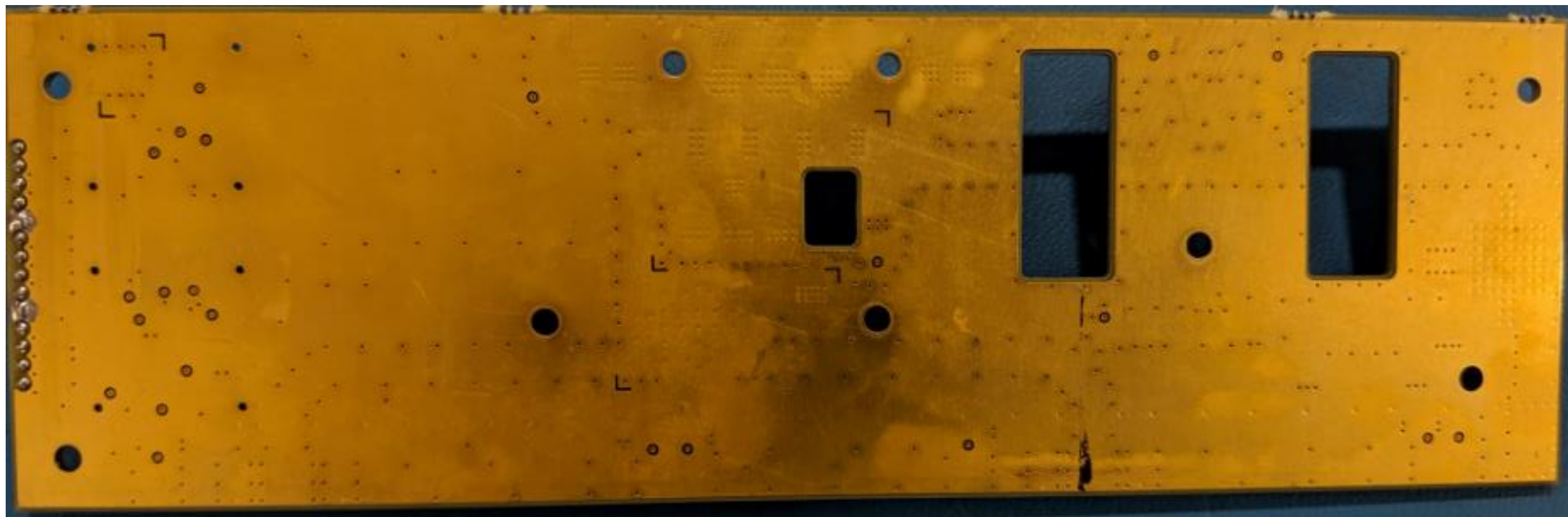


P25 UHF High & Low Input Board Top Side

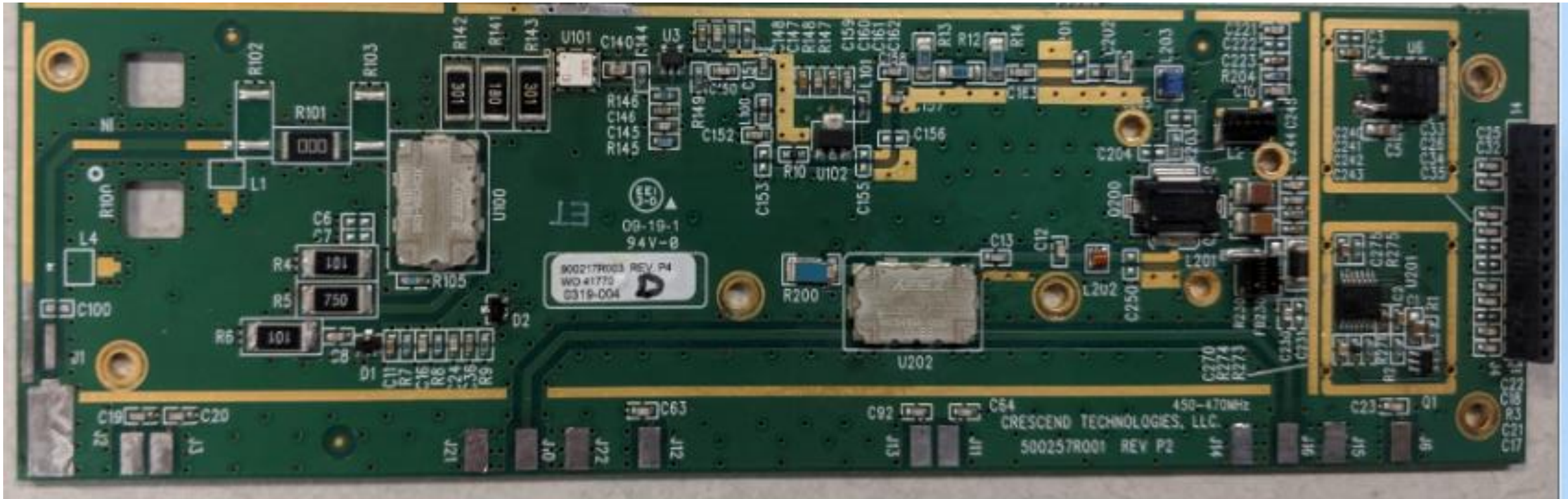




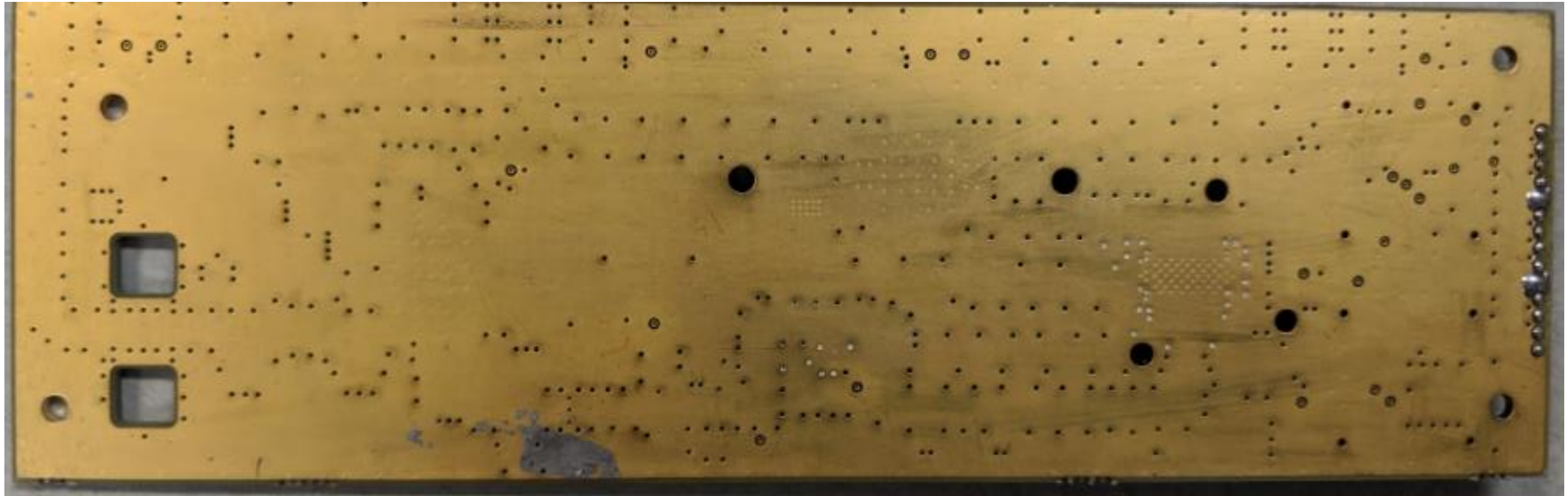
P25 UHF High & Low Input Board Bottom Side



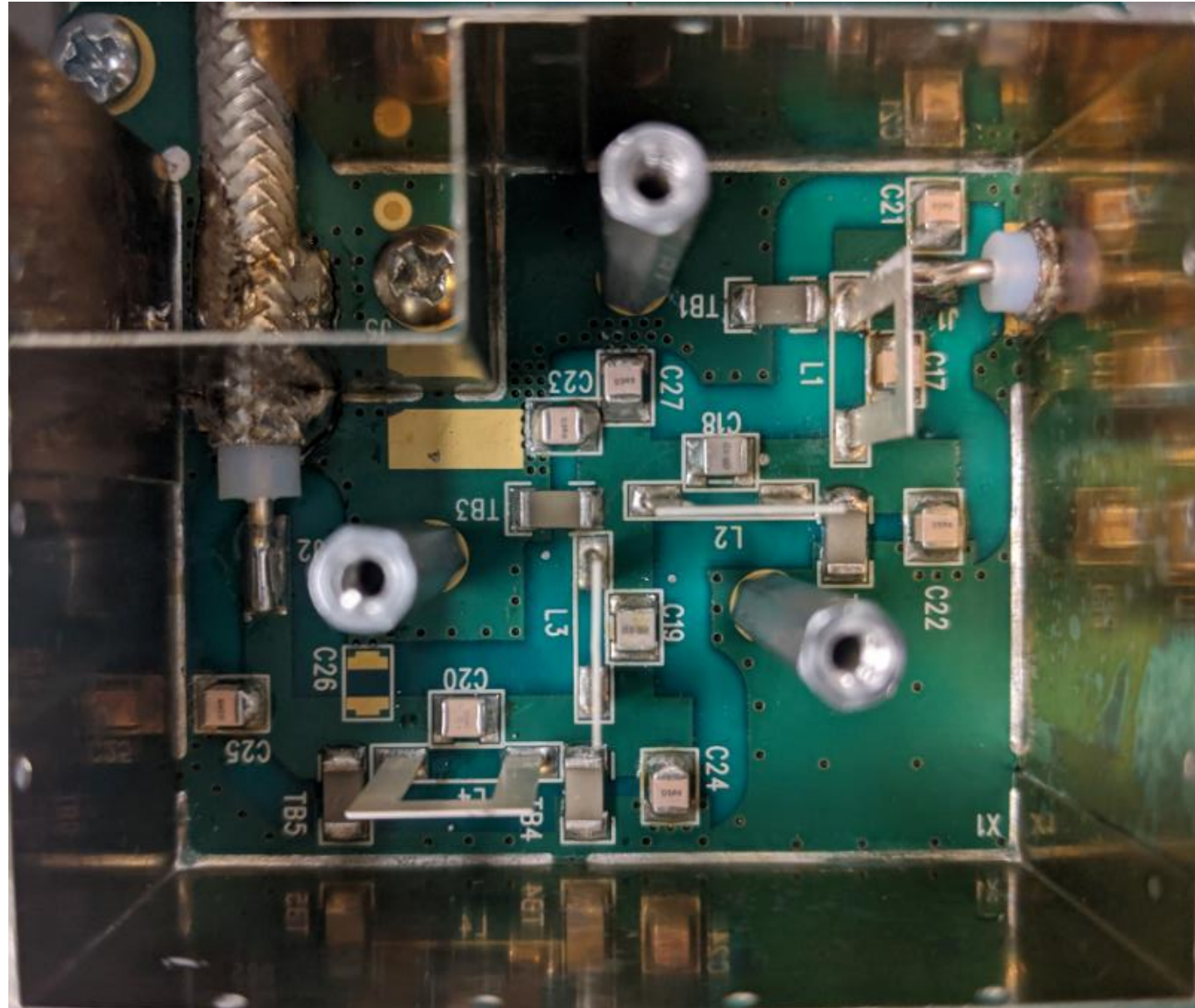
# P25 UHF High Band (450 – 470MHz) Driver Board Top Side



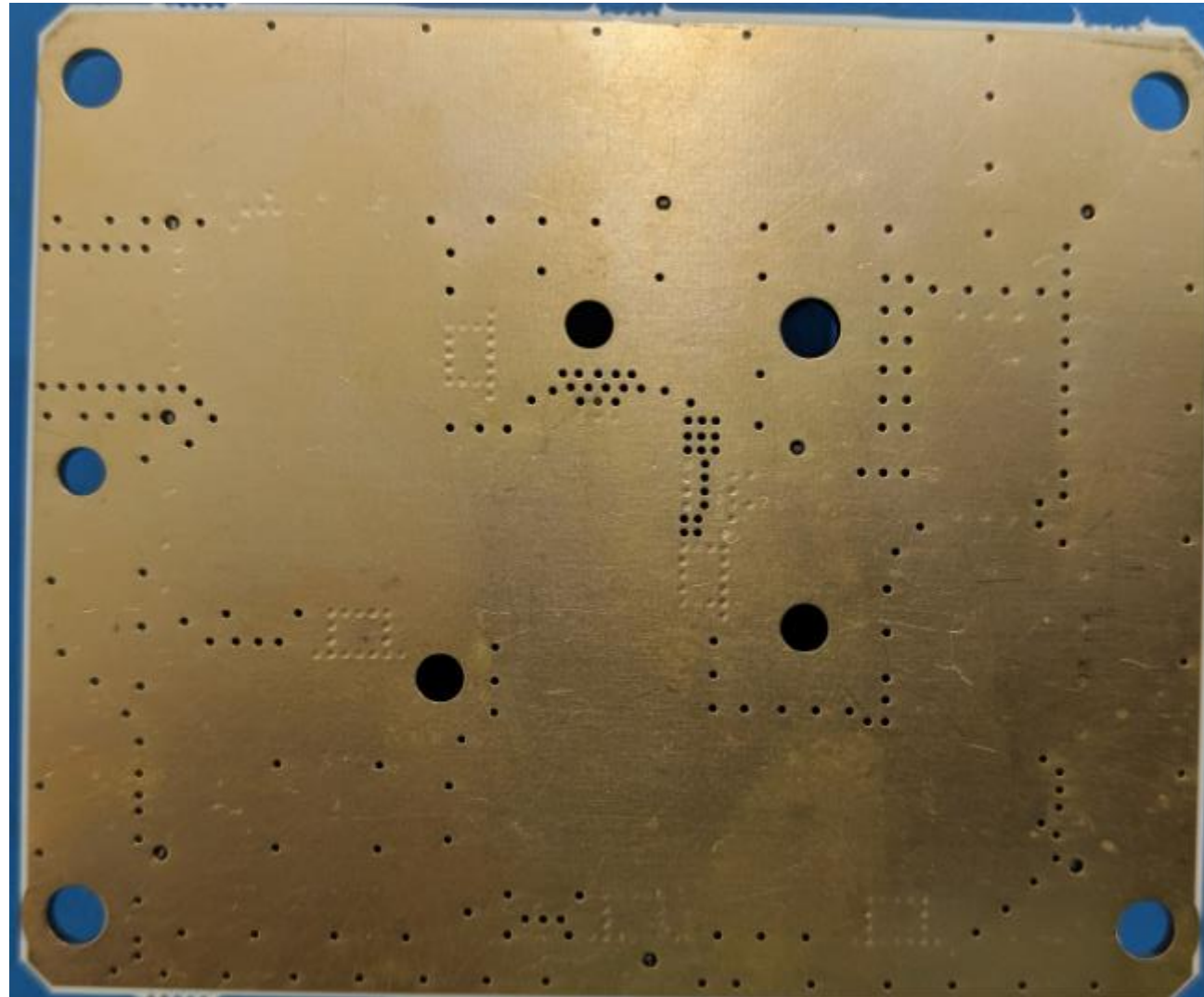
P25 UHF High Band (450 – 470MHz) Driver Board Bottom Side



P25 UHF High & Low Band Low Pass Filter Board Top Side



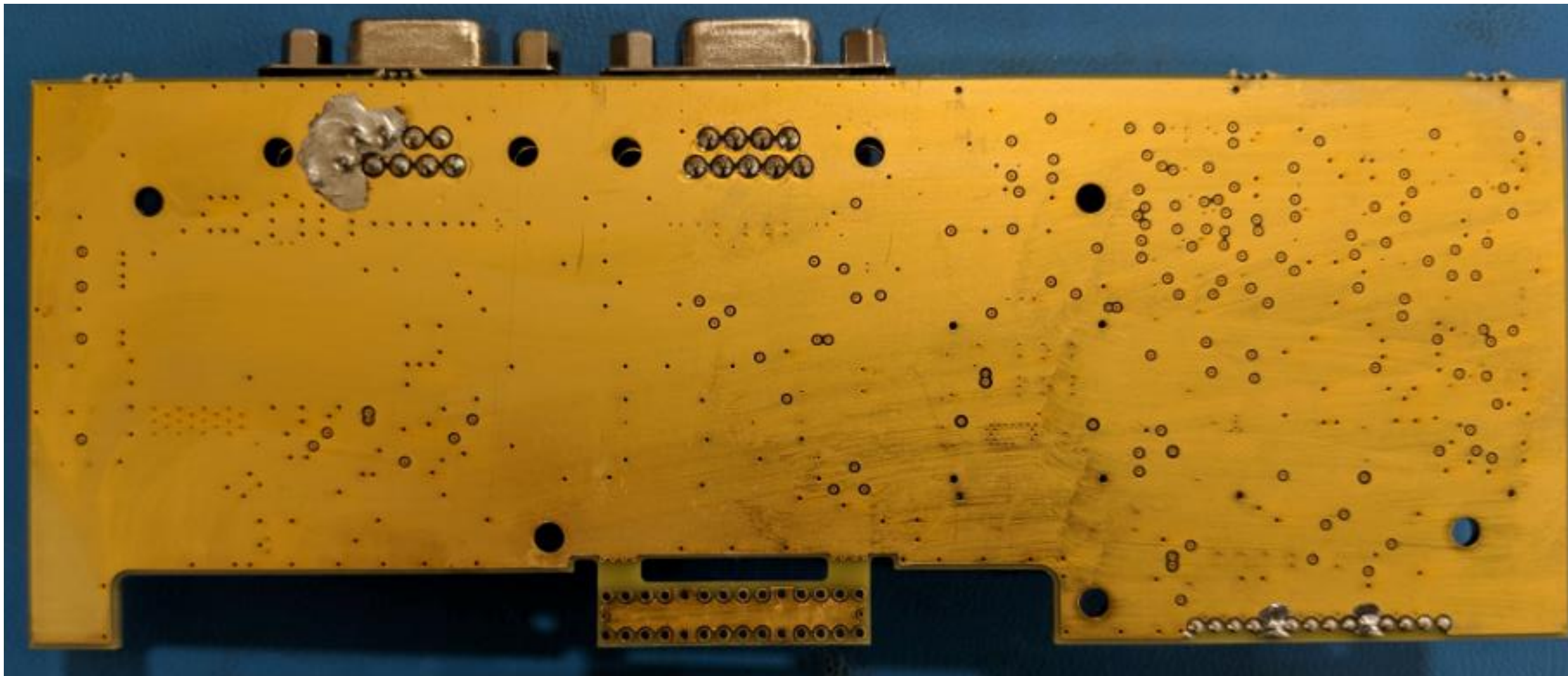
P25 UHF High & Low Band Low Pass Filter Board Bottom Side



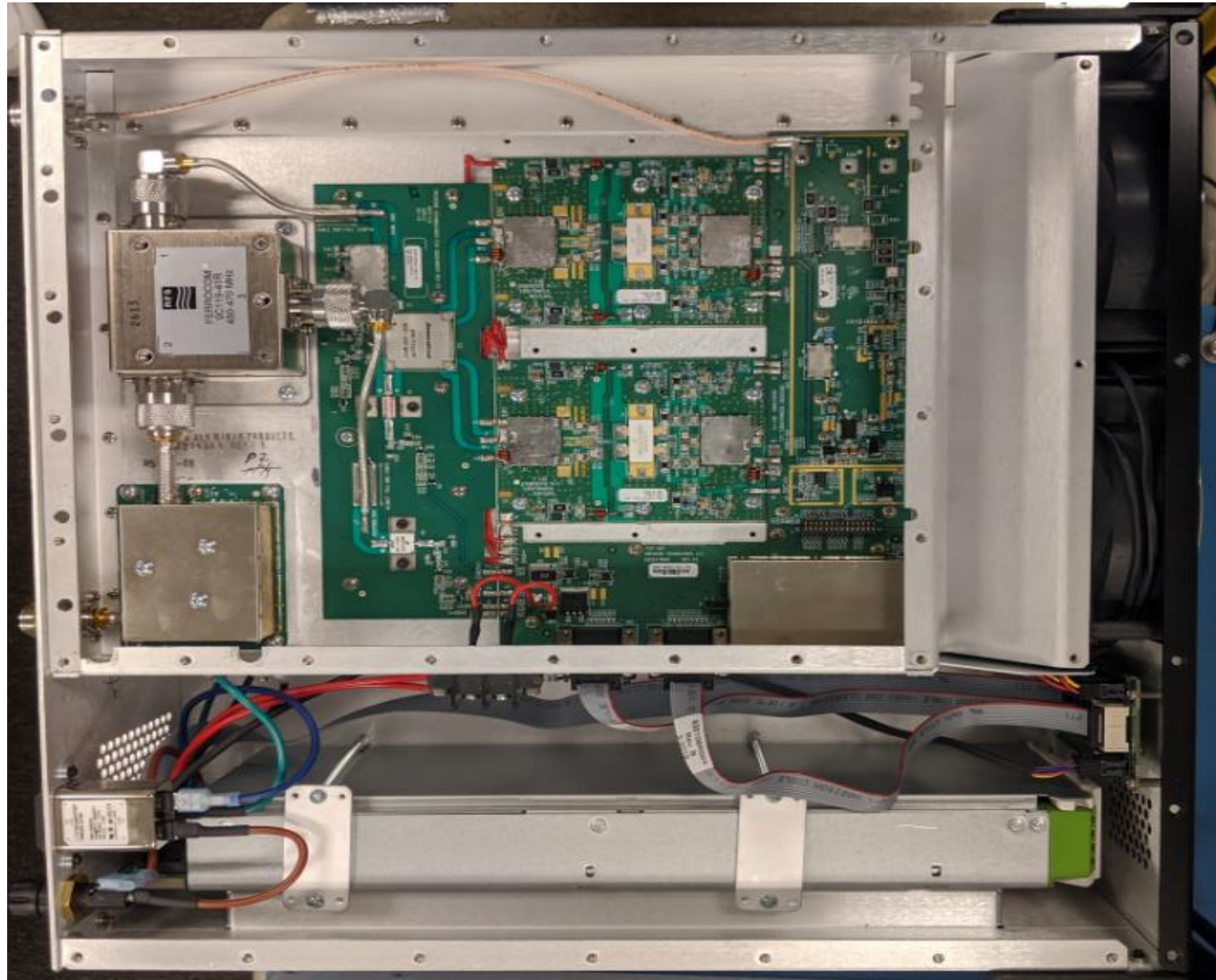
P25 UHF High & Low Band Control Board Top Side



P25 UHF High & Low Band Control Board Bottom Side



P25 UHF High Band (450 – 470MHz) Full Amplifier





# P25 UHF Low Band (406 – 420MHz) Full Amplifier

