

REVISIONS				
REV	ECN NUMBER	DESCRIPTION	DATE	APPROVED
A	23663	INITIAL RELEASE	26-Jun-15	J. PORTER
B-R1	23850	Adding Item 48 P/N 66-5968-57 to BOM.	7/28/2015	P.UY
C-R1	23903	ADD 91-0509 FOR FCC ID AND IC ID MARKINGS, ADD NOTE 5, REMOVE RoHS NOTE.		

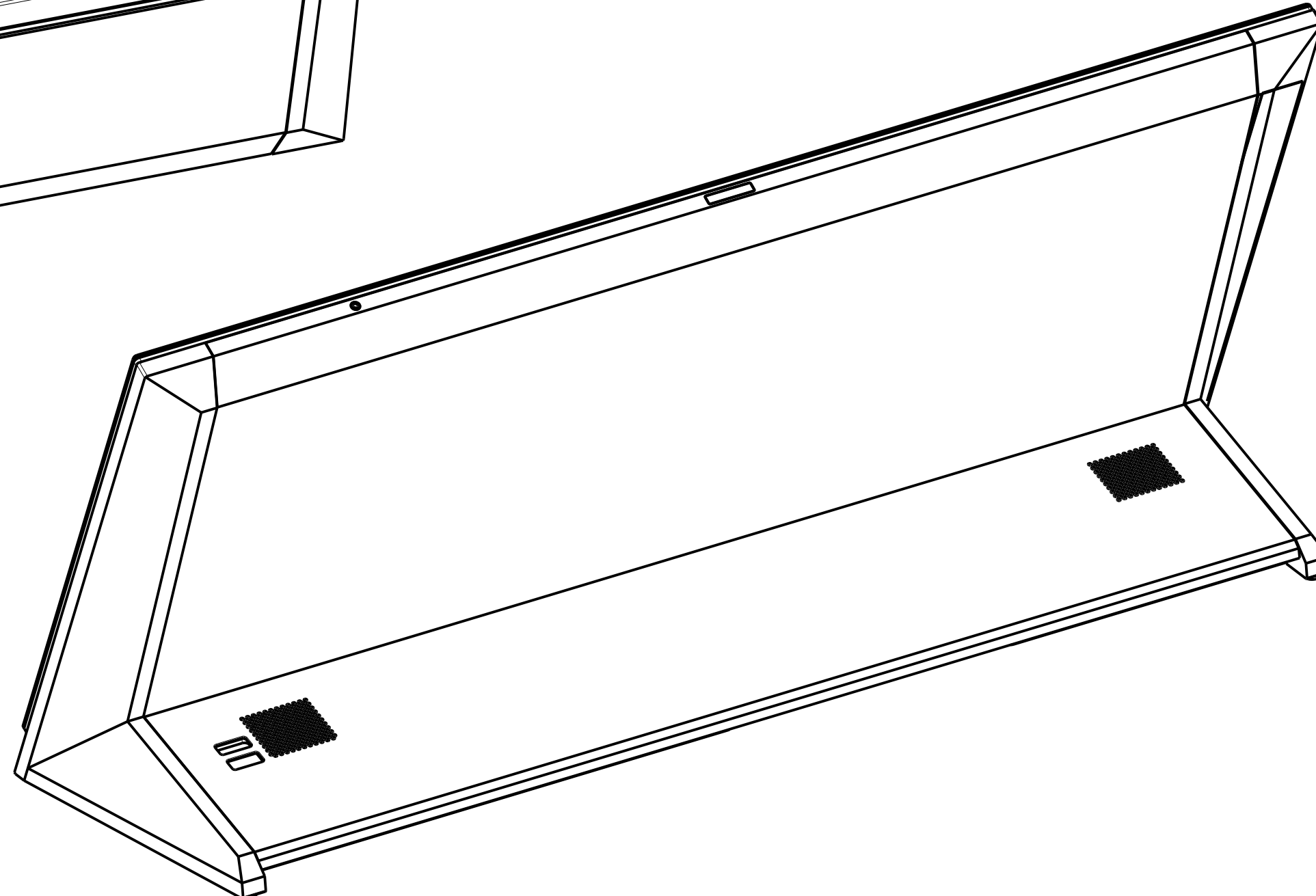
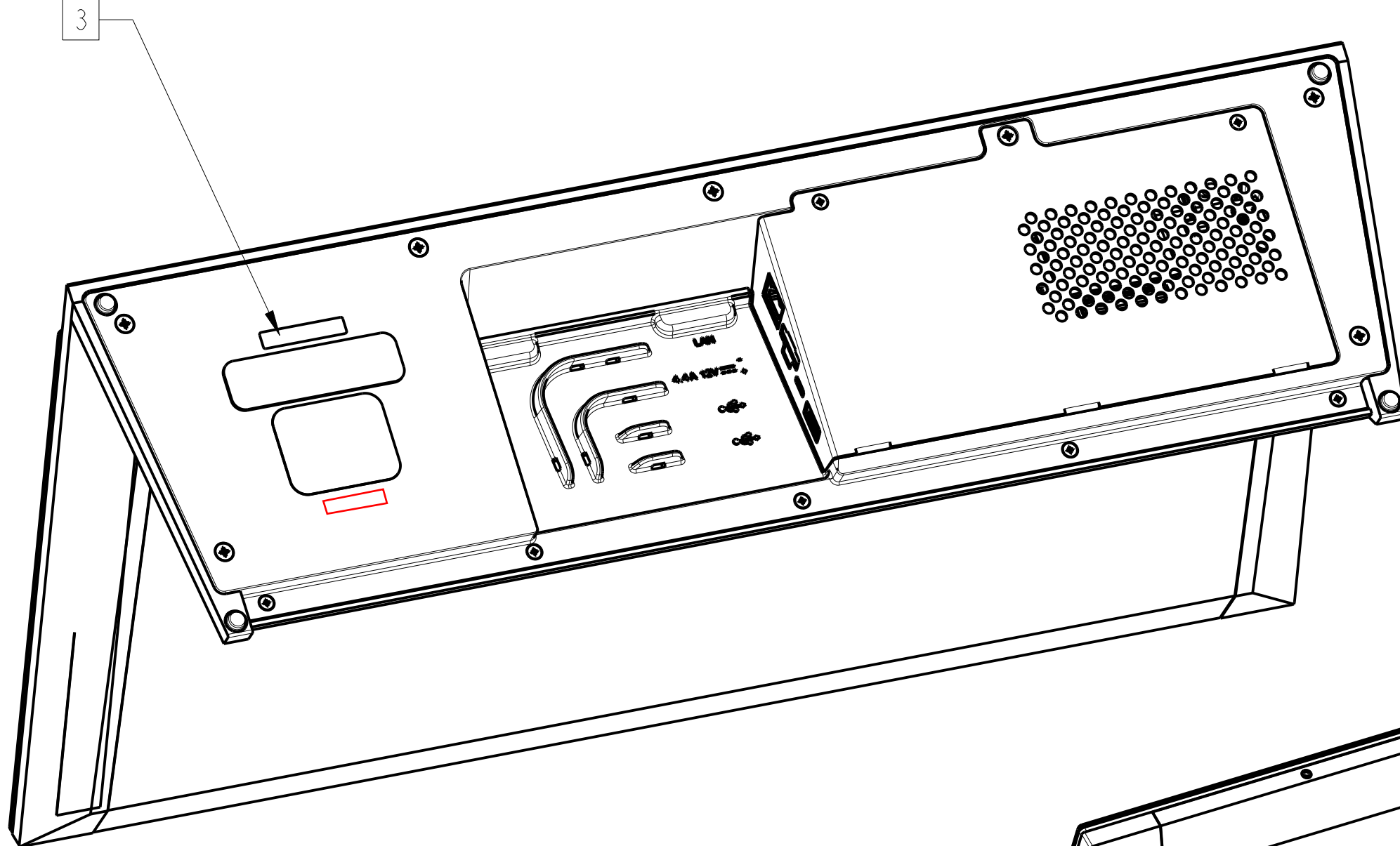
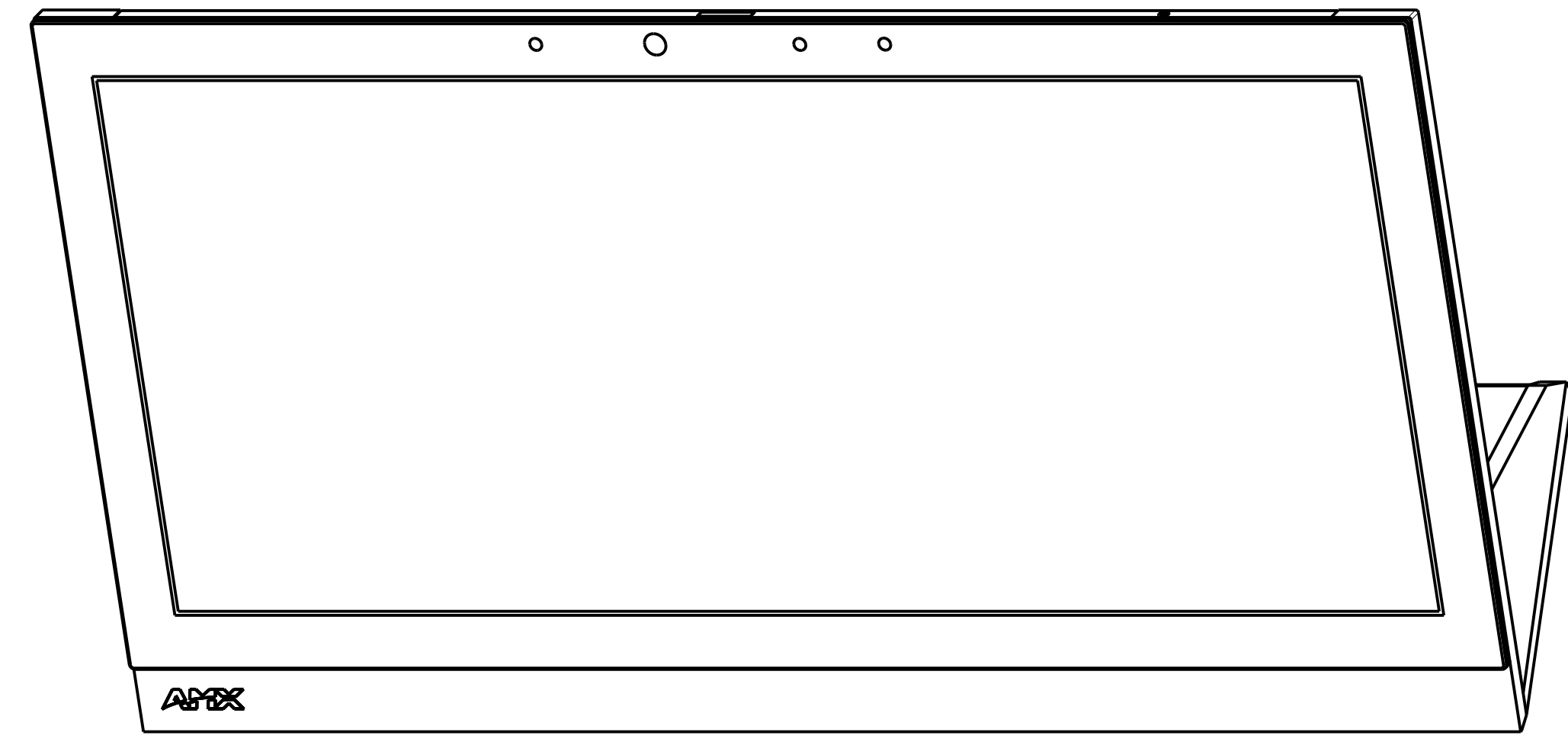
NOTES: UNLESS OTHERWISE SPECIFIED

~~RoHS COMPLIANCE:  
THIS PRODUCT MUST MEET THE REQUIREMENTS OF DIRECTIVE 2002/95/EC OF THE EUROPEAN PARLIAMENT AND OF THE COUNCIL OF JANUARY 27, 2003 ON THE RESTRICTION OF THE USE OF CERTAIN HAZARDOUS SUBSTANCES IN ELECTRICAL AND ELECTRONIC EQUIPMENT AND ITS AMENDMENTS (RoHS). USE OF MERCURY, CADMIUM, LEAD, CHROMIUM VI, PBB AND PBDE IN ANY MATERIALS USED TO CONSTRUCT THIS COMPONENT OR ASSEMBLY SHALL NOT EXCEED THE MAXIMUM CONCENTRATION VALUES SPECIFIED EXCEPT IN EXEMPTED APPLICATIONS.~~

1. ALL DIMENSIONS IN INCHES AND DIMENSIONS IN [ ] ARE IN MILLIMETERS.
2. TORQUE SCREWS AS DEFINED IN THE TORQUE TABLE. THE TORQUE VALUES APPLY TO CLEAN AND DRY PARTS.
3. PLACE EXTRA 91-0512 FROM SAA5968-01 HERE.
4. SEE AB15968-24 FOR PLACEMENT OF ITEM 39

5. MARK LABEL WITH: CONTAINS FCC ID: CWU-SAA596807  
CONTAINS IC: 5078B-SAA596807

TORQUE TABLE	
ITEM NO	TORQUE (IN-LBS)
27	2 ± .2
28	4 ± .5
29	.8 ± .2
30	8 ± .5
31	8 ± .5
32	8 ± .5
33	4 ± .5



BOM CONTINUED ON SHEET 2

25	2	EA	ECA5968-04	ENGINEERING CABLE ASSEMBLY, STRAP, GROUND, W/TERMINAL RING	
24	1	EA	ECA-5968-03	ENGINEERING CABLE ASSEMBLY, USB, CAMERA	
23	1	EA	64-0704-SA	CABLE, SENSOR BOARD, 19.4"/20.3" TABLE, MODERO X SERIES	
22	1	EA	ECA-5968-01	ENGINEERING CABLE ASSEMBLY, 30 PIN LVDS, 7.9" LONG	
21	1	EA	64-0716-SA	CABLE, 10 PIN SHIELDED FFC, IMM PITCH, 368MM LENGTH, TOUCH	
20	1	EA	64-0700-SA	CABLE, DISPLAY LED, 19.4"/20.3" TABLE, MODERO X SERIES	
19	1	EA	62-5968-13	COVER, ELECTRONICS, 20.3" TABLE, MODERO X SERIES	
18	1	EA	60-5968-11	COVER, BASE, 20.3", MODERO X SERIES	
17	1	EA	SAA5968-11	SUB-ASSY, MXT-PAN SOM W/IGB MEMORY	
16	1	EA	SAA5968-02	PCB ASSEMBLY, INTERFACE BOARD	
15	1	EA	60-5968-10	PLATE, BASE, 20.3", MODERO X SERIES	
14	4	EA	45-0028	FOOT, RUBBER, BLACK, 8MM DIA X 2.8MM TALL	
13	1	EA	EMA5968-02	ENGINEERING MECHANICAL ASSEMBLY, DISPLAY COVER W/BUTTON, 20.3" TABLE	
12	1	EA	23-0700-SA	SPEAKER, W/CABLE, HIBOX P063Z-1G	
11	2	EA	60-5968-19	WASHER, SPEAKER, 19.4"/20.3" TABLE, MODERO X SERIES	
10	1	EA	23-0701-SA	MICROPHONE W/CABLE	
9	1	EA	60-5968-25	BOOT, MICROPHONE 20.3"/19.4" TABLE MODERO X SERIES	
8	1	EA	25-0700-SA	PCB ASSEMBLY, CAMERA MODULE	
7	1	EA	66-5968-10	SHIELD, LIGHT, PROXIMITY SENSOR	
6	1	EA	SAA5968-03	PCB ASSEMBLY, SENSOR BOARD	
5	1	EA	62-5968-14	BRACKET, RIGHT, DISPLAY, 20.3" TABLE, MODERO X SERIES	
4	1	EA	62-5968-15	BRACKET, LEFT, DISPLAY, 20.3" TABLE, MODERO X SERIES	
3	1	EA	66-5968-11	GASKET, DISPLAY, 20.3" TABLE, MODERO X SERIES	
2	1	EA	69-5968-24B	DISPLAY, OVERLAY BONDING, 20.3"	
1	1	EA	EMA5968-01	ENGINEERING MECHANICAL ASSEMBLY, FRAME W/LEGS, 20.3" TABLE	
ITEM NO	QTY	UOM	PART NUMBER	DESCRIPTION	NOTES

MECHANICAL COMPONENTS (FOR DESIGN REFERENCE ONLY)

NOTICE: This drawing is the property of AMX LLC. All information contained herein this is not generally known shall be confidential except to the extent the information had been previously established. This drawings may not be copied, reproduced, or used as the basis for manufacture or sale without written permission.	UNLESS OTHERWISE SPECIFIED TOLERANCE ON DECIMAL DIMENSIONS: .x = ±0.1 .xx = ±0.02 .xxx = ±0.010 ANGLES: ±1.0	AMX LLC 3000 RESEARCH DRIVE RICHARDSON, TX 75082
	SURFACE FLATNESS .003 TIR PER LINEAR INCH ALL DIMENSIONS IN INCHES. DO NOT SCALE DRAWING	
THIRD ANGLE PROJECTION		SIZE D DRAWING NUMBER MD5968-87 SCALE 1:2 SHEET 1 OF 5

UNLESS OTHERWISE STATED, THE ARTICLE SPECIFIED SHALL BE RoHS COMPLIANT PER EU DIRECTIVE 2002/95/EC

REF. PRO/E ASSEM FILE = MA5968-87  
REF. PRO/E ASSEM REV. = A

ITEM NO	QTY	UOM	PART NUMBER	DESCRIPTION	NOTES
<b>MECHANICAL COMPONENTS (FOR DESIGN REFERENCE ONLY)</b>					
49	1	EA	91-0509	LABEL, MATTE WH. PERM. POLY, 1.0 X .187	
48	6	EA	66-5968-57	FORMEX WASHER, BRACKET WASHER FOR 19"/20" TABLE UNIT	
47	2	EA	66-5968-43	PLASTIC SHIM, W/ 3M 468MP ADHESIVE 0.060 THICK X 0.40 DIA	
46	14	IN	66-2265-26	TAPE, 3M 4914 VHB, .140" WIDTH X .010" THICK X 36YD	
45	2	EA	80-0281	SCREW 6-32 X 3/8" LONG, SILVER	
44	1	EA	60-5968-02	FOAM O-RING WITH ADHESIVE FOR CAMERA BOARD 25-0700-SA	
43	1	EA	66-5968-20	FOAM, .188 WIDE X .25 LG X .25 HEIGHT	
42	6	EA	80-0309	WASHER, #4, FLAT	
41	1	EA	91-0750	LABEL, CLASS B, FCC/CE	
40	1	EA	91-5968-88	LABEL, MODERO X, CCC, INPUT: 13.5VDC, 4.5A, 1.75 X 1.40	
39	BLK	INCH	66-0025	TAPE, KAPTON, 1/2" WIDE POLYIMIDE FILM	
38	17	INCH	66-0011	TAPE, KAPTON, 1/4" WIDE POLYIMIDE FILM	
37	1	EA	66-5968-07	DIFFUSER, LED	
36	1	EA	66-5968-04	ABSORBER, EMI, 3M AB5100, 1.5" X 3"	
35	6	INCH	66-5968-01	TAPE, COPPER, 1" WIDE	
34	1	EA	91-5976-33	LABEL, AMX LOGO, .283" ELECTROFORM, STICK-ON, MODERO X	
33	7	EA	80-0111-02	SCREW, #4-40 X .250, PFH, 82DG, BLACK ZINC	
32	7	EA	80-0137-03	SCREW, #6-32 X .375 PFH, UNDERCUT 82, BLK	
31	5	EA	80-0114-08	SCREW, #4-20 X .250LG, PPH, PLASTITE-BLK ZINC	
30	2	EA	80-0114-09	SCREW, #4-20 X .625 LG, PLASTITE, PPH, BLK	
29	2	EA	80-0283-01	SCREW, M2-0.4 X 3MM PHILLIPS PAN HEAD MACHINE STAINLESS	
28	11	EA	80-0109-01	SCREW, #4-40 X .187, PPH, BLACK	
27	4	EA	80-0282-01	SCREW, MACHINE, FLAT HEAD, M2.6 X 5MM LONG, ZN	
26	BLK	INCH	66-5968-03	TAPE, 3M468MP, .75" WIDE X 15.75" LONG, 5 MIL THICK	

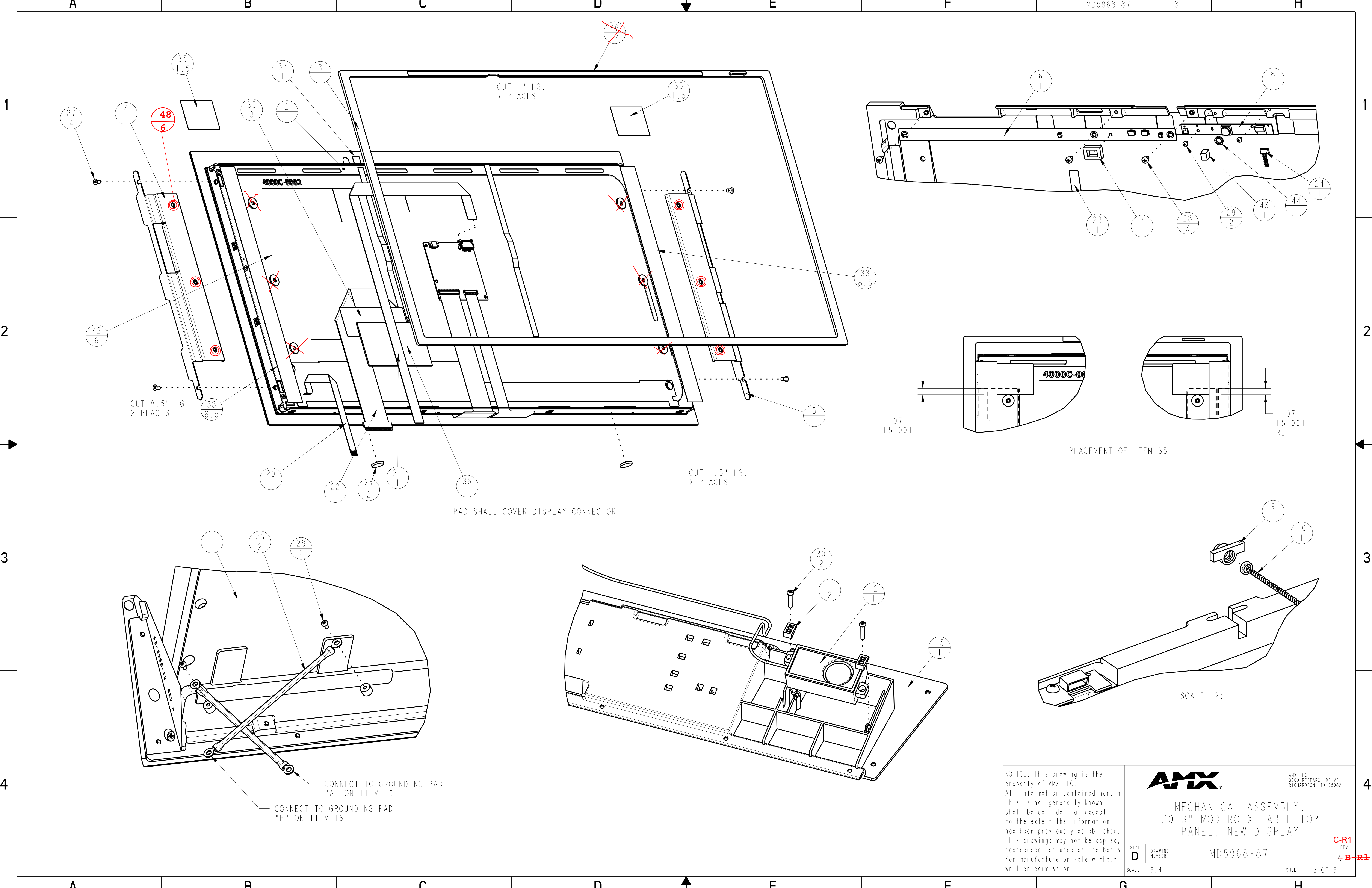
NOTICE: This drawing is the property of AMX LLC. All information contained herein this is not generally known shall be confidential except to the extent the information had been previously established. This drawings may not be copied, reproduced, or used as the basis for manufacture or sale without written permission.

**AMX**  
 AMX LLC  
 3000 RESEARCH DRIVE  
 RICHARDSON, TX 75082

MECHANICAL ASSEMBLY,  
 20.3" MODERO X TABLE TOP  
 PANEL, NEW DISPLAY

SIZE: **D**  
 DRAWING NUMBER: MD5968-87  
 SCALE: 1:2

REV: **C-R1**  
~~A-B-R1~~  
 SHEET 2 OF 5



CUT 1" LG.  
7 PLACES

CUT 8.5" LG.  
2 PLACES

CUT 1.5" LG.  
X PLACES

PAD SHALL COVER DISPLAY CONNECTOR

PLACEMENT OF ITEM 35

SCALE 2:1

CONNECT TO GROUNDING PAD  
"A" ON ITEM 16  
CONNECT TO GROUNDING PAD  
"B" ON ITEM 16

NOTICE: This drawing is the property of AMX LLC. All information contained herein shall be confidential except to the extent the information had been previously established. This drawings may not be copied, reproduced, or used as the basis for manufacture or sale without written permission.

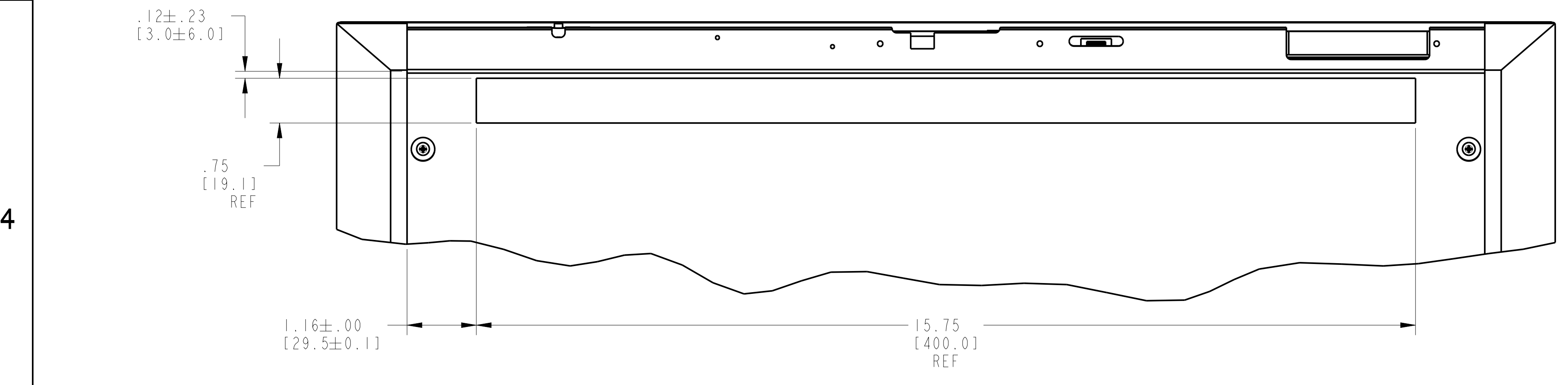
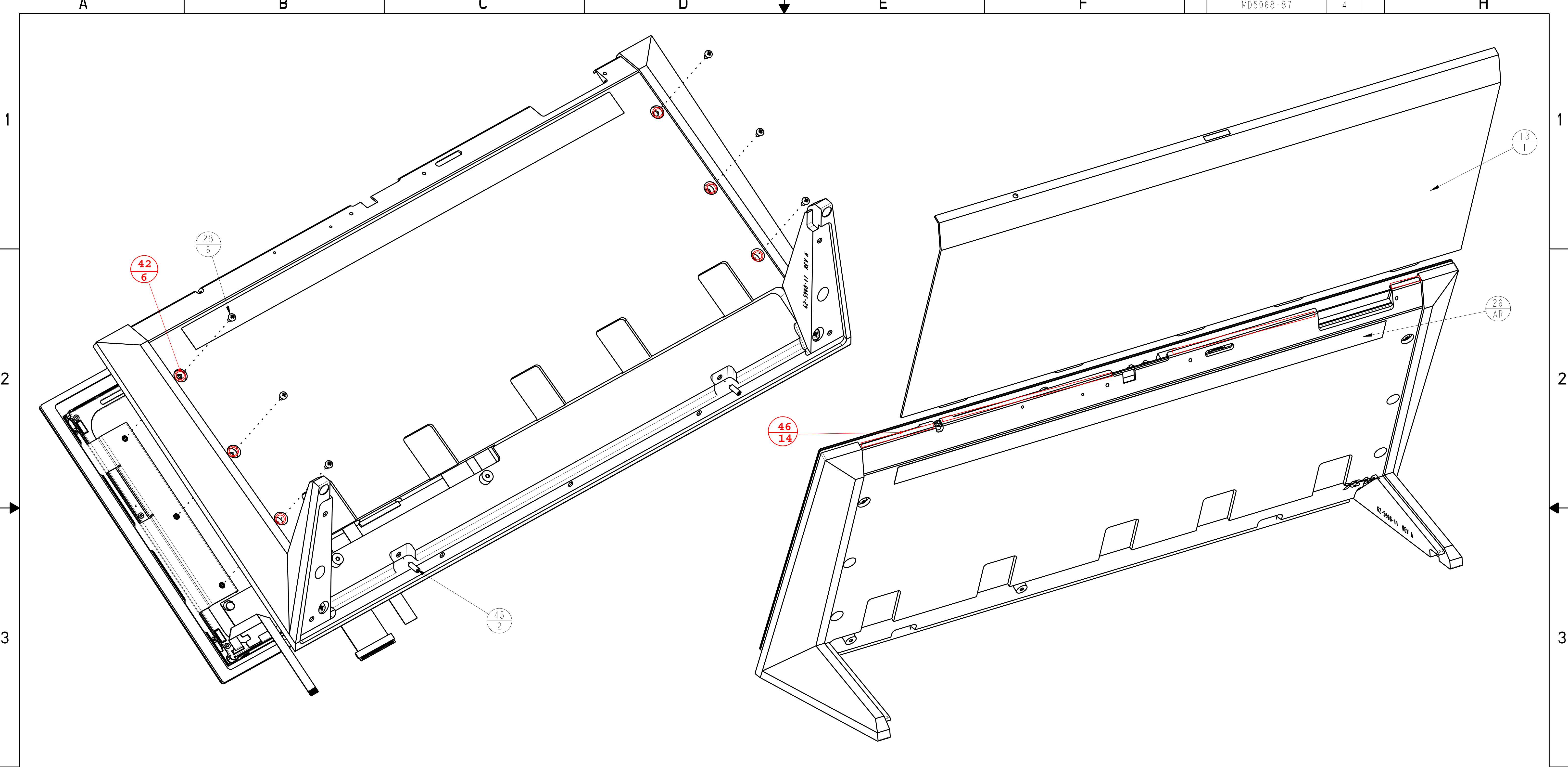


AMX LLC  
3000 RESEARCH DRIVE  
RICHARDSON, TX 75082

MECHANICAL ASSEMBLY,  
20.3" MODERO X TABLE TOP  
PANEL, NEW DISPLAY

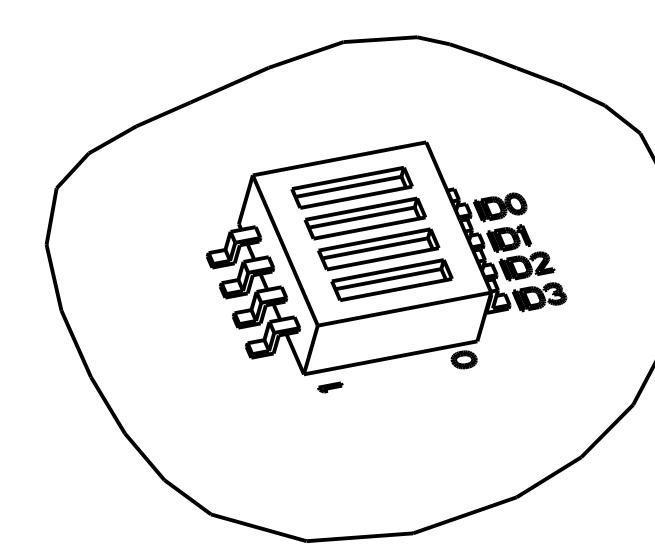
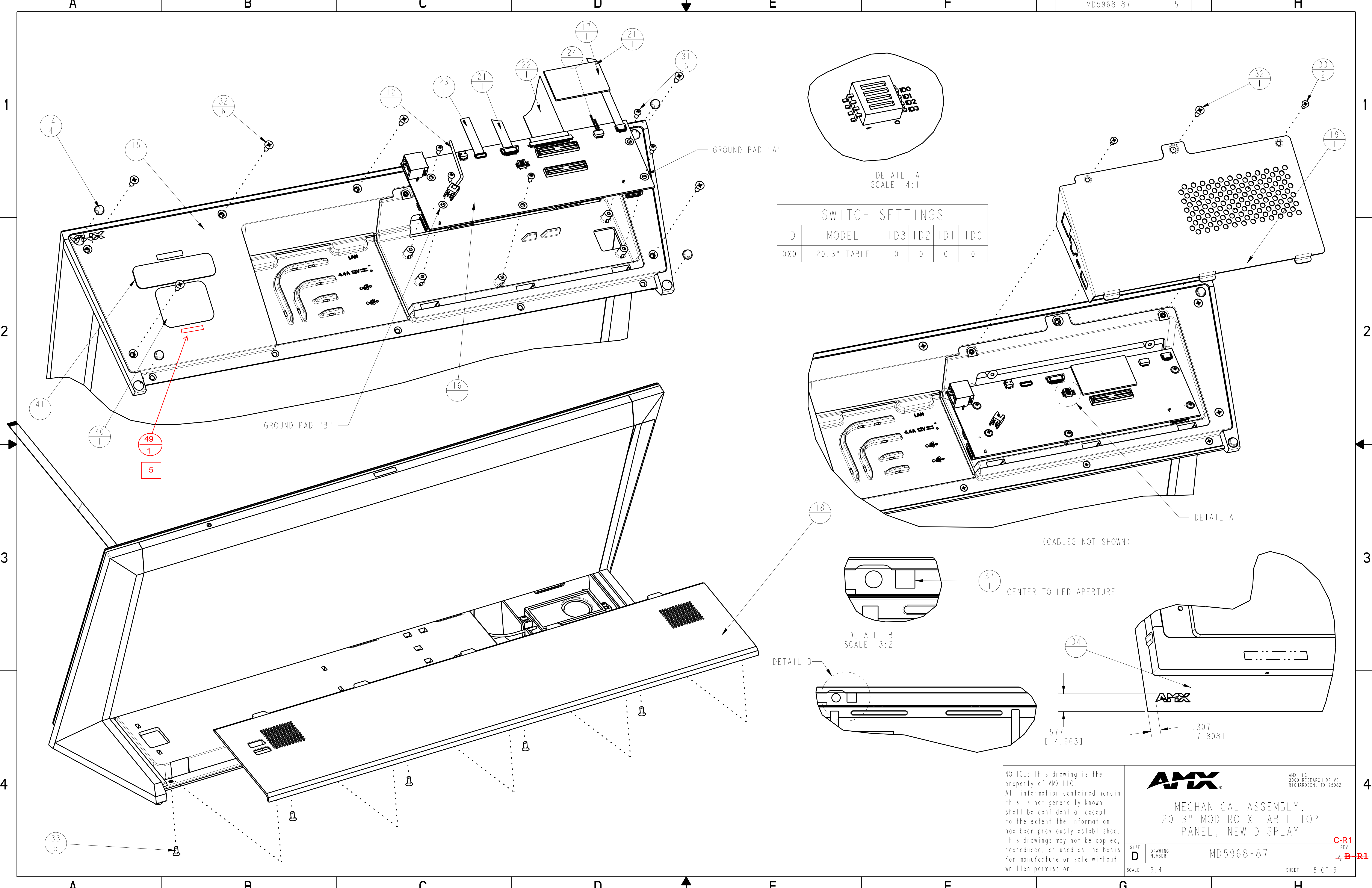
SIZE <b>D</b>	DRAWING NUMBER MD5968-87	REV <b>C-R1</b>
SCALE 3:4	SHEET 3 OF 5	

~~B-R1~~



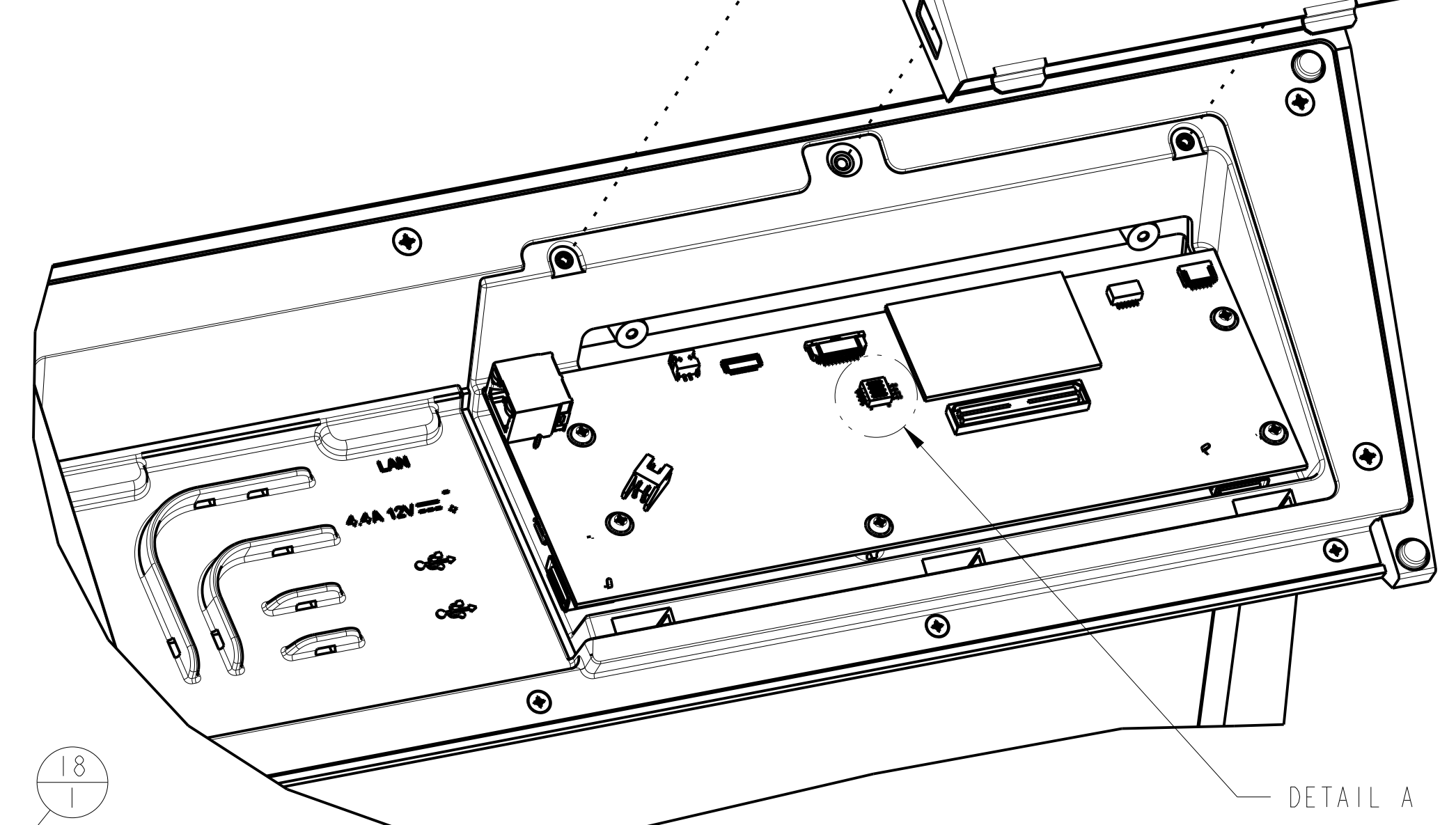
NOTICE: This drawing is the property of AMX LLC. All information contained herein this is not generally known shall be confidential except to the extent the information had been previously established. This drawings may not be copied, reproduced, or used as the basis for manufacture or sale without written permission.

<b>AMX</b>		AMX LLC 3000 RESEARCH DRIVE RICHARDSON, TX 75082
MECHANICAL ASSEMBLY, 20.3" MODERO X TABLE TOP PANEL, NEW DISPLAY		
SIZE <b>D</b>	DRAWING NUMBER MD5968-87	REV <b>C-R1</b>
SCALE 3:4	SHEET 4 OF 5	



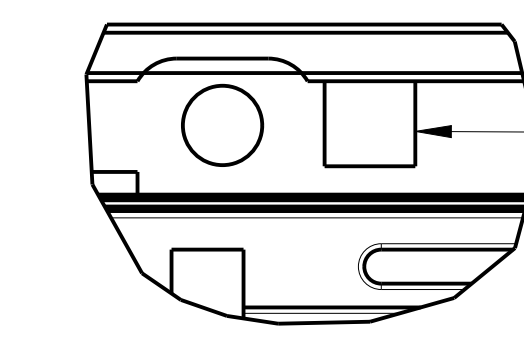
DETAIL A  
SCALE 4:1

ID	MODEL	ID3	ID2	ID1	ID0
0X0	20.3" TABLE	0	0	0	0



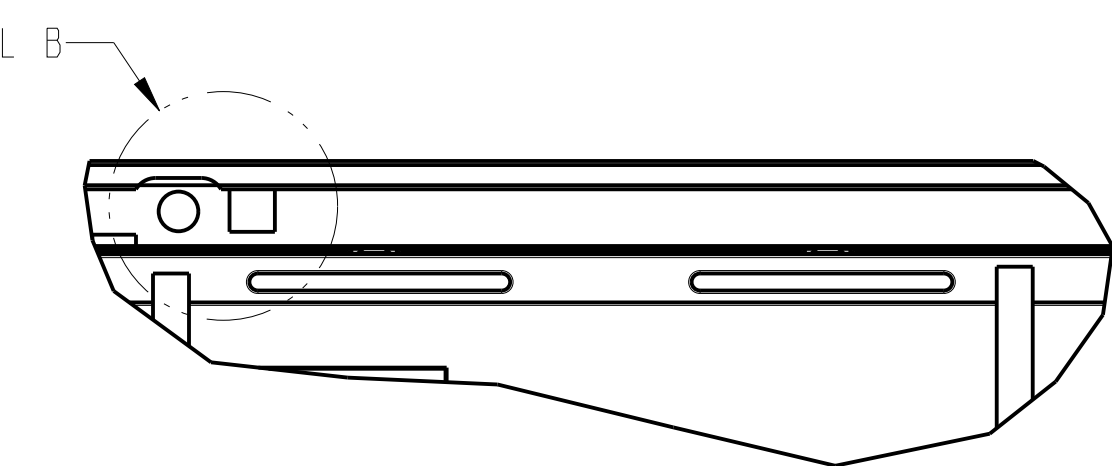
DETAIL A

(CABLES NOT SHOWN)

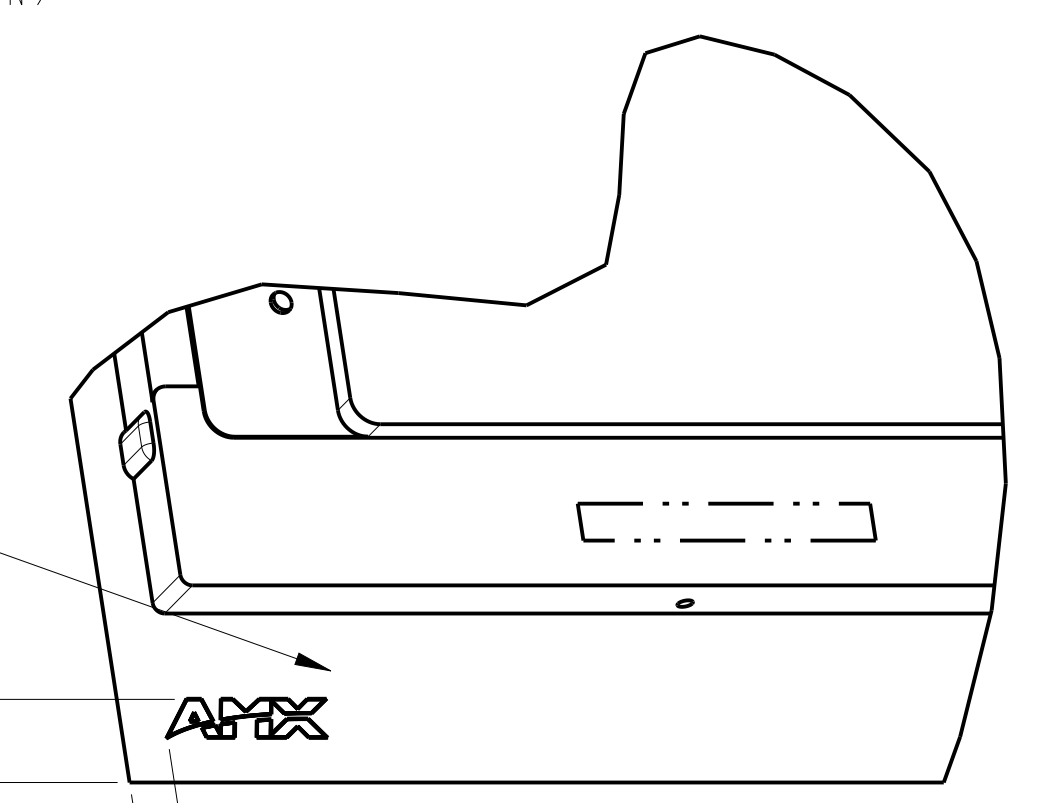


37 CENTER TO LED APERTURE

DETAIL B  
SCALE 3:2



34  
 .577 [14.663]  
 .307 [7.808]



AMX LLC  
3000 RESEARCH DRIVE  
RICHARDSON, TX 75082

NOTICE: This drawing is the property of AMX LLC. All information contained herein this is not generally known shall be confidential except to the extent the information had been previously established. This drawings may not be copied, reproduced, or used as the basis for manufacture or sale without written permission.

<p><b>AMX</b></p> <p>MECHANICAL ASSEMBLY, 20.3" MODERO X TABLE TOP PANEL, NEW DISPLAY</p>		<p>C-R1 REV</p>
<p>SIZE <b>D</b></p>	<p>DRAWING NUMBER MD5968-87</p>	<p>REV <b>A B-R1</b></p>
<p>SCALE 3:4</p>	<p>SHEET 5 OF 5</p>	