

Internal Photos



Rear of unit with cover removed showing main board with display board behind it

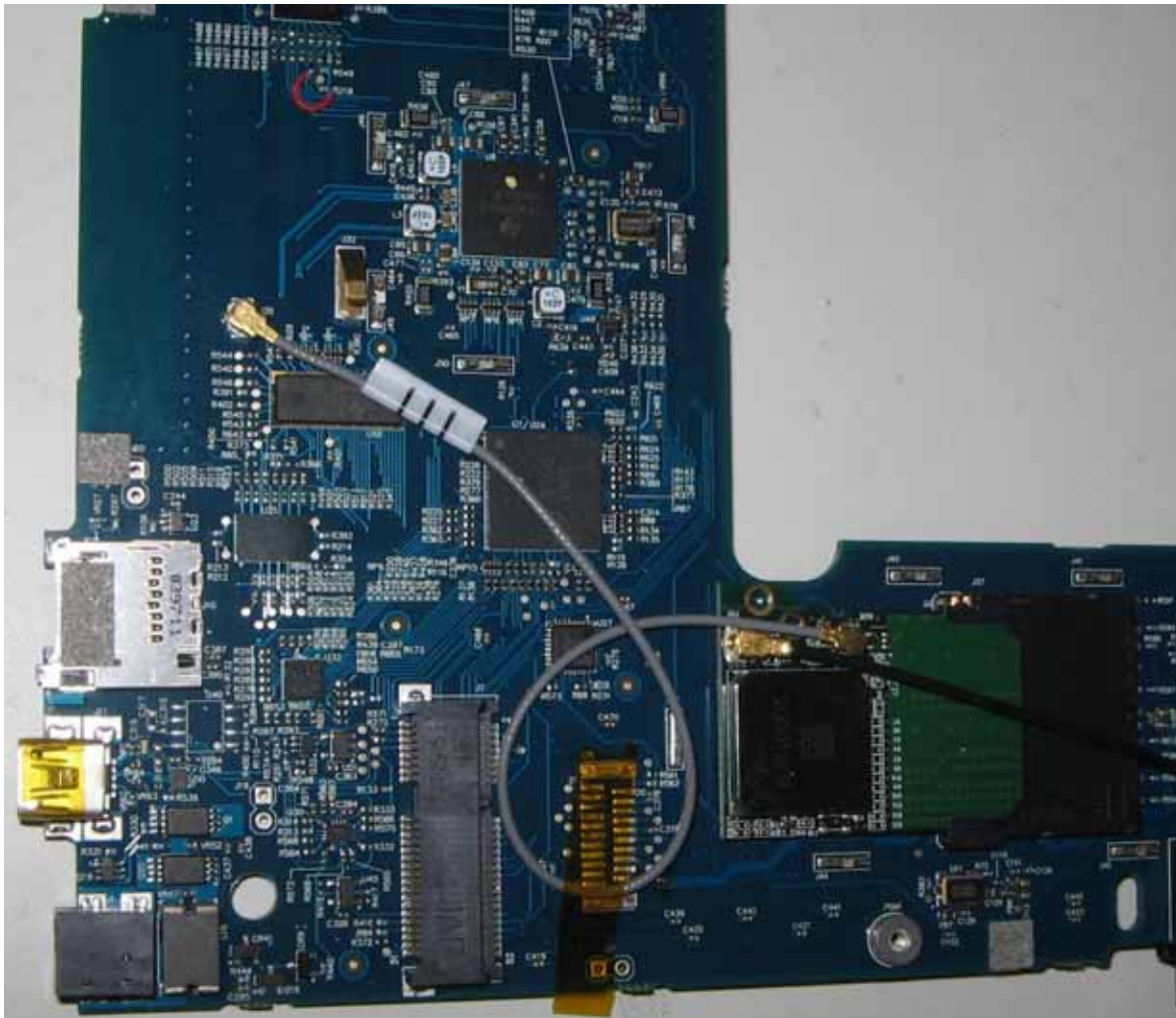
Radio Card
Additional photos showing top and bottom are provided following the antenna close-up shots.

Main Board

Antennas
Close-ups are provided on the next page

Display Board

Display and main boards – assembly view



Integrated circuit board antenna (top) and Skycross antenna (bottom)





Top and Bottom of WiFi radio card used in the system

This card is a radio module, but FCC modular approval is not being used when installed in the host device.

