



EMI TEST REPORT

Test Report No. : 32KE0010-HO-01-C

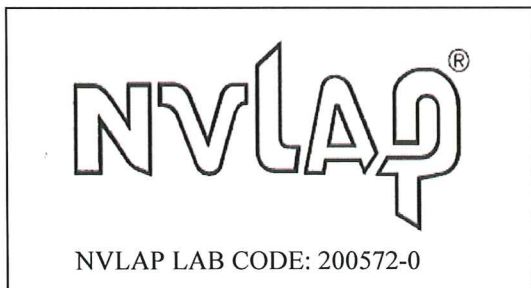
Applicant : Alps Electric Co., Ltd.
Type of Equipment : UNIT ASSY IMMOBI & KEYLESS
Model No. : TWD1U827
Test regulation : FCC Part 15 Subpart B: 2012
FCC ID : CWTWD1U827
Test Result : Complied

1. This test report shall not be reproduced in full or partial, without the written approval of UL Japan, Inc.
2. The results in this report apply only to the sample tested.
3. This sample tested is in compliance with the limits of the above regulation.
4. The test results in this test report are traceable to the national or international standards.
5. This test report must not be used by the customer to claim product certification, approval, or endorsement by NVLAP, NIST, or any agency of the Federal Government.

Date of test: June 22, 2012

Representative test engineer: T. Nakagawa
Tomohisa Nakagawa
Engineer of WiSE Japan,
UL Verification Service

Approved by: T. Hatakeda
Takahiro Hatakeda
Leader of WiSE Japan,
UL Verification Service



This laboratory is accredited by the NVLAP LAB CODE 200572-0, U.S.A. The tests reported herein have been performed in accordance with its terms of accreditation. *As for the range of Accreditation in NVLAP, you may refer to the WEB address, <http://www.ul.com/japan/jpn/pages/services/emc/about/mar1/index.jsp#nvlap>

CONTENTS	PAGE
SECTION 1: Customer information	3
SECTION 2: Equipment under test (E.U.T.)	3
SECTION 3: Test specification, procedures & results	4
SECTION 4: Operation of E.U.T. during testing	6
SECTION 5: Radiated Emission	7
APPENDIX 1: Data of EMI test	8
Radiated Emission.....	8
APPENDIX 2: Test instruments	10
APPENDIX 3: Photographs of test setup.....	11
Radiated Emission.....	11
Worst Case Position (Horizontal: X-axis/ Vertical:X-axis)	12

SECTION 1: Customer information

Company Name : Alps Electric Co., Ltd.
Address : 6-3-36, Nakazato, Furukawa, Osaki-city, Miyagi-pref, 989-6181, Japan
Telephone Number : +81-229-23-5111
Facsimile Number : +81-229-22-3755
Contact Person : Toru Kinoshita

SECTION 2: Equipment under test (E.U.T.)

2.1 Identification of E.U.T.

Type of Equipment : UNIT ASSY IMMOBI & KEYLESS
Model No. : TWD1U827
Serial No. : Refer to Clause 4.2
Receipt Date of Sample : Refer to Section 4, Clause 4.2
Country of Mass-production : June 20, 2012
Condition of EUT : Japan
Modification of EUT : Engineering prototype
(Not for Sale: This sample is equivalent to mass-produced items.)

2.2 Product description

Model No: TWD1U827 (referred to as the EUT in this report) is the UNIT ASSY IMMOBI & KEYLESS.

General Specification

Clock frequency(ies) in the system : 8MHz, 16MHz, 29.4014MHz

Radio Specification

(Immobilizer System: LF Transceiving function) *1)

Equipment Type : Transceiver
Frequency of Operation : 125kHz
Type of Modulation : ASK
Mode of Operation : Half duplex
Antenna Type : Loop Antenna
Method of Frequency Generation : Ceramic resonator
Operating voltage (inner) : DC 12.0V
Operating Temperature : -40 deg. C to +85 deg. C

(Keyless Entry System: RF Receiving function)

Equipment type : Receiver
Frequency of operation : 313.85MHz
Type of modulation : FSK
Antenna Type : Metallic Antenna
Method of Frequency Generation : Crystal + PLL IC
Local frequency : 313.65MHz
IF frequency : 220 kHz
Operating voltage (inner) : DC 12.0V
Operating Temperature : -40 deg. C to +85 deg. C

*1) Reference: EUT also has this function. Please refer to No. 32KE0010-HO-01-B.

FCC15.111(b)

The receiving antenna (of this EUT) is installed inside the EUT and cannot be removed (permanently attached). Therefore, Radiated emission test was performed.

UL Japan, Inc.

Head Office EMC Lab.

4383-326 Asama-cho, Ise-shi, Mie-ken 516-0021 JAPAN

Telephone : +81 596 24 8116

Facsimile : +81 596 24 8124

SECTION 3: Test specification, procedures & results

3.1 Test specification

Test Specification : FCC Part 15 Subpart B: 2012, final revised on March 30, 2012 and effective April 30, 2012

Title : FCC 47CFR Part15 Radio Frequency Device
Subpart B Unintentional Radiators

3.2 Procedures and results

Item	Test Procedure	Limits	Deviation	Worst margin	Result
Conducted emission	FCC: ANSI C63.4: 2003 7. AC powerline conducted emission measurements	FCC:Part 15 Subpart B 15.107(a)	N/A *1)	N/A	N/A
Radiated emission	FCC: ANSI C63.4: 2003 8. Radiated emission measurements	FCC: Part 15 Subpart B 15.109(a)	N/A	23.2dB 612.667MHz Horizontal, QP	Complied

*Note: UL Japan, Inc's EMI Work Procedure 13-EM-W0420.

*1) The test is not applicable since the EUT is not the device that is designed to be connected to the public utility (AC) power line.

3.3 Addition to standard

No addition, exclusion nor deviation has been made from the standard.

3.4 Uncertainty

EMI

The following uncertainties have been calculated to provide a confidence level of 95% using a coverage factor k=2.

Test room (semi- anechoic chamber)	Radiated emission						
	(3m*)(+dB)			(1m*)(+dB)		(0.5m*)(+dB)	
	9kHz -30MHz	30MHz -300MHz	300MHz -1GHz	1GHz -10GHz	10GHz -18GHz	18GHz -26.5GHz	26.5GHz -40GHz
No.1	4.2dB	5.0dB	5.1dB	4.7dB	5.7dB	4.4dB	4.3dB
No.2	4.1dB	5.2dB	5.1dB	4.8dB	5.6dB	4.3dB	4.2dB
No.3	4.5dB	5.0dB	5.2dB	4.8dB	5.6dB	4.5dB	4.2dB
No.4	4.7dB	5.2dB	5.2dB	4.8dB	5.6dB	5.1dB	4.2dB

*3m/1m/0.5m = Measurement distance

Radiated emission test(3m)

The data listed in this test report has enough margin, more than the site margin.

UL Japan, Inc.

Head Office EMC Lab.

4383-326 Asama-cho, Ise-shi, Mie-ken 516-0021 JAPAN

Telephone : +81 596 24 8116

Facsimile : +81 596 24 8124

3.5 Test Location

UL Japan, Inc. Head Office EMC Lab. *NVLAP Lab. code: 200572-0
4383-326 Asama-cho, Ise-shi, Mie-ken 516-0021 JAPAN
Telephone : +81 596 24 8116 Facsimile : +81 596 24 8124

	FCC Registration Number	IC Registration Number	Width x Depth x Height (m)	Size of reference ground plane (m) / horizontal conducting plane	Other rooms
No.1 semi-anechoic chamber	313583	2973C-1	19.2 x 11.2 x 7.7m	7.0 x 6.0m	No.1 Power source room
No.2 semi-anechoic chamber	655103	2973C-2	7.5 x 5.8 x 5.2m	4.0 x 4.0m	-
No.3 semi-anechoic chamber	148738	2973C-3	12.0 x 8.5 x 5.9m	6.8 x 5.75m	No.3 Preparation room
No.3 shielded room	-	-	4.0 x 6.0 x 2.7m	N/A	-
No.4 semi-anechoic chamber	134570	2973C-4	12.0 x 8.5 x 5.9m	6.8 x 5.75m	No.4 Preparation room
No.4 shielded room	-	-	4.0 x 6.0 x 2.7m	N/A	-
No.5 semi-anechoic chamber	-	-	6.0 x 6.0 x 3.9m	6.0 x 6.0m	-
No.6 shielded room	-	-	4.0 x 4.5 x 2.7m	4.75 x 5.4 m	-
No.6 measurement room	-	-	4.75 x 5.4 x 3.0m	4.75 x 4.15 m	-
No.7 shielded room	-	-	4.7 x 7.5 x 2.7m	4.7 x 7.5m	-
No.8 measurement room	-	-	3.1 x 5.0 x 2.7m	N/A	-
No.9 measurement room	-	-	8.0 x 4.5 x 2.8m	2.0 x 2.0m	-
No.10 measurement room	-	-	2.6 x 2.8 x 2.5m	2.4 x 2.4m	-
No.11 measurement room	-	-	3.1 x 3.4 x 3.0m	2.4 x 3.4m	-

* Size of vertical conducting plane (for Conducted Emission test) : 2.0 x 2.0m for No.1, No.2, No.3, and No.4 semi-anechoic chambers and No.3 and No.4 shielded rooms.

3.6 Data of EMI, Test instruments, and Test set up

Refer to APPENDIX.

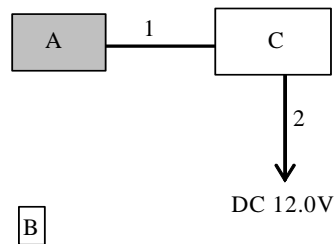
SECTION 4: Operation of E.U.T. during testing

4.1 Operating modes

Mode	Remarks
Receiving mode	* UNIT ASSY IMMOBI & KEYLESS was operated manually by a test engineer and the test was performed with the EUT receiving 313.85MHz.

*The test signal level was confirmed to be sufficient to stabilize the local oscillator of the EUT.

4.2 Configuration and peripherals



* Cabling and setup were taken into consideration and test data was taken under worse case conditions.

Description of EUT and Support equipment

No.	Item	Model number	Serial number	Manufacturer	Remarks
A	UNIT ASSY IMMOBI & KEYLESS	TWD1U827	2012061803	Alps Electric Co., Ltd.	EUT
B	TRANSMITTER ASSY KEYLESS (Hand Unit)	TWB1U859	No.20120618 No.3	Alps Electric Co., Ltd.	-
C	Checker Bench	-	No.24	-	-

List of cables used

No.	Name	Length (m)	Shield		Remark
			Cable	Connector	
1	Signal and Power Cable	3.0	Unshielded	Unshielded	-
2	DC Cable	1.0	Unshielded	Unshielded	-

UL Japan, Inc.

Head Office EMC Lab.

4383-326 Asama-cho, Ise-shi, Mie-ken 516-0021 JAPAN

Telephone : +81 596 24 8116

Facsimile : +81 596 24 8124

SECTION 5: Radiated Emission

5.1 Operating environment

Test place : No.2 semi anechoic chamber
Temperature : See data
Humidity : See data

5.2 Test configuration

EUT was placed on a urethane platform of nominal size, 1.0m by 1.5m, raised 0.8m above the conducting ground plane. The EUT was set on the center/edge of the tabletop.
Test was made with the antenna positioned in both the horizontal and vertical planes of polarization. The measurement antenna was varied in height above the conducting ground plane to obtain the maximum signal strength. Photographs of the set up are shown in Appendix 3.

5.3 Test conditions

Frequency range : 30MHz-300MHz (Biconical antenna) / 300MHz-1000MHz (Logperiodic antenna)
1000MHz - 2000MHz (Horn antenna)
Test distance : 3m
EUT position : Table top
EUT operation mode : See Clause 4.1

5.4 Test procedure

The height of the measuring antenna varied between 1 and 4m and EUT was rotated a full revolution in order to obtain the maximum value of the electric field intensity.
The measurements were performed for both vertical and horizontal antenna polarization with the Test Receiver, or the Spectrum Analyzer.
The radiated emission measurements were made with the following detector function of the test receiver and the Spectrum analyzer.

Frequency	Below 1GHz	Above 1GHz
Instrument used	Test Receiver	Spectrum Analyzer
IF Bandwidth	QP: BW 120kHz	PK: RBW:1MHz/VBW: 3MHz AV *1): RBW:1MHz/VBW:10Hz

*1) When using Spectrum analyzer, the test was made with adjusting span to zero by using peak hold.

The noise levels were confirmed at each position of X, Y and Z axes of EUT to see the position of maximum noise, and the test was made at representative X-axis since no difference was found among each position.

5.5 Test result

Summary of the test results: Pass

*The limit is rounded down to one decimal place.

*The test result is rounded off to one or two decimal places, so some differences might be observed.

Date: June 22, 2012

Test engineer: Tomohisa Nakagawa

UL Japan, Inc.

Head Office EMC Lab.

4383-326 Asama-cho, Ise-shi, Mie-ken 516-0021 JAPAN

Telephone : +81 596 24 8116

Facsimile : +81 596 24 8124

APPENDIX 1: Data of EMI test

Radiated Emission

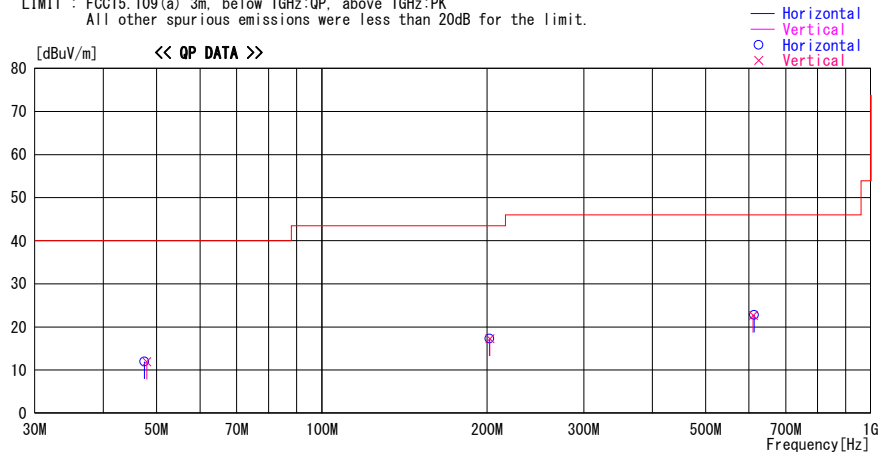
DATA OF RADIATED EMISSION TEST

UL Japan, Inc. Head Office EMC Lab. No.2 Semi Anechoic Chamber
Date : 2012/06/22

Report No. : 32KE0010-HO-01
Temp./Humi. : 23deg. C / 56% RH
Engineer : Tomohisa Nakagawa

Mode / Remarks : Rx 313.85MHz

LIMIT : FCC15.109(a) 3m, below 1GHz:QP, above 1GHz:PK
All other spurious emissions were less than 20dB for the limit.



Frequency [MHz]	Reading [dBuV]	DET	Antenna	Loss&	Level	Angle	Height	Polar.	Limit	Margin	Comment
			Factor	Gain							
			[dB/m]	[dB]	[dBuV/m]	[Deg]	[cm]		[dBuV/m]	[dB]	
47.550	21.7	QP	11.9	-21.6	12.0	0	100	Hori.	40.0	28.0	
48.000	21.8	QP	11.7	-21.6	11.9	0	100	Vert.	40.0	28.1	
201.899	20.8	QP	16.3	-19.8	17.3	0	100	Hori.	43.5	26.2	
202.349	20.8	QP	16.3	-19.8	17.3	0	100	Vert.	43.5	26.2	
610.333	21.3	QP	19.9	-18.5	22.7	0	100	Vert.	46.0	23.3	
612.667	21.4	QP	19.9	-18.5	22.8	0	100	Hori.	46.0	23.2	

CHART: WITH FACTOR ANT TYPE: -30MHz: LOOP, 30-300MHz: BICONICAL, 300MHz-1000MHz: LOGPERIODIC, 1000MHz-: HORN
CALCULATION: RESULT = READING + ANT FACTOR + LOSS (CABLE+ATTEN.) - GAIN (AMP)

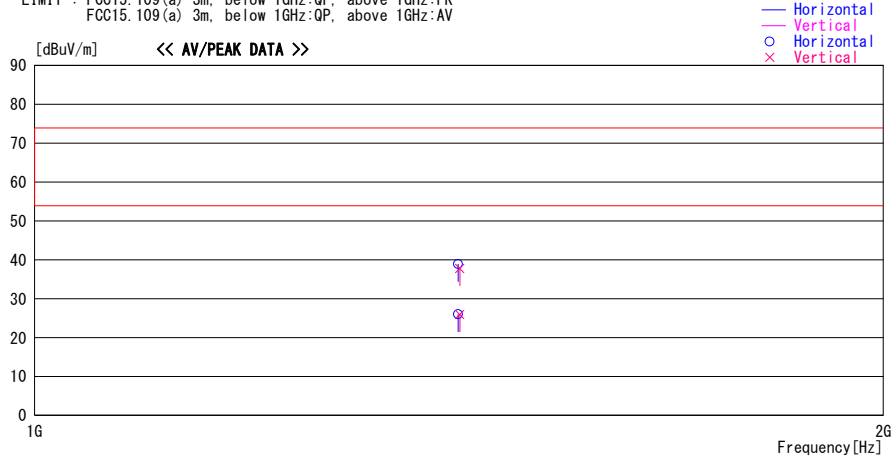
Radiated Emission

DATA OF RADIATED EMISSION TEST

UL Japan, Inc. Head Office EMC Lab. No.2 Semi Anechoic Chamber
Date : 2012/06/22

Report No. : 32KE0010-HO-01
Temp./Humi. : 23deg. C / 56% RH
Engineer : Tomohisa Nakagawa

LIMIT : FCC15.109(a) 3m, below 1GHz:QP, above 1GHz:PK
FCC15.109(a) 3m, below 1GHz:QP, above 1GHz:AV



Frequency [MHz]	Reading [dBuV]	DET	Antenna	Loss&	Level	Angle	Height	Polar.	Limit	Margin	Comment
			Factor	Gain							
			[dB/m]	[dB]	[dBuV/m]	[Deg]	[cm]		[dBuV/m]	[dB]	
1413.324	46.6	PK	26.1	-33.8	38.9	0	100	Hori.	73.9	35.0	
1413.324	33.7	AV	26.1	-33.8	26.0	0	100	Hori.	53.9	27.9	
1414.991	45.5	PK	26.1	-33.8	37.8	0	100	Vert.	73.9	36.1	
1414.991	33.7	AV	26.1	-33.8	26.0	0	100	Vert.	53.9	27.9	

CHART: WITH FACTOR ANT TYPE: -30MHz: LOOP, 30-300MHz: BICONICAL, 300MHz-1000MHz: LOGPERIODIC, 1000MHz-: HORN
CALCULATION: RESULT = READING + ANT FACTOR + LOSS(CABLE+ATTEN.) - GAIN(AMP)

APPENDIX 2: Test instruments

EMI test equipment

Control No.	Instrument	Manufacturer	Model No	Serial No	Test Item	Calibration Date * Interval(month)
MAEC-02	Semi Anechoic Chamber(NSA)	TDK	Semi Anechoic Chamber 3m	DA-06902	RE	2011/06/21 * 12
MOS-22	Thermo-Hygrometer	Custom	CTH-201	0003	RE	2012/02/06 * 12
MJM-14	Measure	KOMELON	KMC-36	-	RE	-
COTS-MEMI	EMI measurement program	TSJ	TEPTO-DV	-	RE	-
MSA-04	Spectrum Analyzer	Agilent	E4448A	US44300523	RE	2012/04/06 * 12
MTR-03	Test Receiver	Rohde & Schwarz	ESCI	100300	RE	2012/04/03 * 12
MBA-02	Biconical Antenna	Schwarzbeck	BBA9106	VHA91032008	RE	2011/10/23 * 12
MLA-02	Logperiodic Antenna	Schwarzbeck	USLP9143	201	RE	2011/10/23 * 12
MCC-12	Coaxial Cable	Fujikura/Agilent	-	-	RE	2012/02/16 * 12
MAT-07	Attenuator(6dB)	Weinschel Corp	2	BK7970	RE	2011/11/02 * 12
MPA-09	Pre Amplifier	Agilent	8447D	2944A10845	RE	2011/09/26 * 12
MHA-06	Horn Antenna 1-18GHz	Schwarzbeck	BBHA9120D	254	RE	2012/02/22 * 12
MPA-10	Pre Amplifier	Agilent	8449B	3008A02142	RE	2012/01/25 * 12
MCC-132	Microwave Cable	HUBER+SUHNER	SUCOFLEX104	336161/4(1m) / 340639(5m)	RE	2011/09/06 * 12

The expiration date of the calibration is the end of the expired month.

All equipment is calibrated with valid calibrations. Each measurement data is traceable to the national or international standards.

As for some calibrations performed after the tested dates, those test equipment have been controlled by means of an unbroken chains of calibrations.

Test Item:

RE: Radiated emission

UL Japan, Inc.

Head Office EMC Lab.

4383-326 Asama-cho, Ise-shi, Mie-ken 516-0021 JAPAN

Telephone : +81 596 24 8116

Facsimile : +81 596 24 8124