

Safety Information

Hereby, Summit Global Group declares that this Instant Mobile Printer is in compliance with the essential requirements and other relevant provisions of Directive 1999/5/EC.

Changes or modifications not expressly approved by the party responsible for compliance could void the user's authority to operate the equipment.

NOTICE

This equipment has been tested and found to comply with the limits for a Class B digital device, pursuant to part 15 of the FCC Rules. These limits are designed to provide reasonable protection against harmful interference in a residential installation.

This equipment generates, uses, and can radiate radio frequency energy and, if not installed and used in accordance with the instructions, may cause harmful interference to radio communications. However, there is no guarantee that interference will not occur in a particular installation. If this equipment does not cause harmful interference to radio or television reception, which can be determined by turning the equipment off and on, the user is encouraged to try to correct the interference by one or more of the following measures:

- Reorient or relocate the receiving antenna
- Increase the separation between the equipment and receiver
- Connect the equipment into an outlet on a circuit different from that to which the receiver is connected
- Consult the dealer or an experienced radio/TV technician for help.

This transmitter must not be co-located or operated in conjunction with any other antenna or transmitter.

This equipment complies with the FCC/IC radiation exposure limits sent forth for uncontrolled equipment and meets the FCC radio frequency (RF) Exposure Guidelines in Supplement C to OET62 and RSS-102 for the IC radio frequency (RF) Exposure rules. This equipment has very low levels of RF energy that is deemed to comply without maximum permissive exposure evaluation (MPE). But it is desirable that is should be installed and operated with at least 20cm and more between the radiator and person's body (excluding extremities: hands, wrists, feet, and ankles).

This device complies with Part 15 of the FCC Rules and the RSS-Gen of IC Rules. Operation is subject to the following two conditions: (1) this device may not cause interference, and (2) this device must accept any interference, including interference that may cause undesired operation of this device.

CAUTION

RISK OF EXPLODING IF BATTERY IS REPLACED BY AN INCORRECT TYPE.

BATTERY CAUTIONS

1. Use only the provided charger with this product.
2. Only charge the battery as recommended by the instructions.
3. The battery provided with his product is intended for this product only.
4. Prolonged use of the printer will result in the battery becoming warm.

BATTERY WARNINGS

1. Avoid contact with leaking or a damaged battery.
2. Do not short battery terminals.
3. Adult supervision is recommended when product is used by young children.
4. Avoid areas of excessive heat or moisture.
5. Do not disassemble the battery.

This product contains electrical or electronic materials. The presence of these materials may, if not disposed of properly, have potential adverse effects on the environment and human health. Presence of this label on the product means it should not be disposed of as unsorted waste and must be collected separately. As a consumer, you are responsible for ensuring that this product is disposed of properly. To find out how to properly dispose of this product, please go to www.polaroid.com and click on "Company" or call the customer service number for your country listed in the instruction manual.



Product Diagram

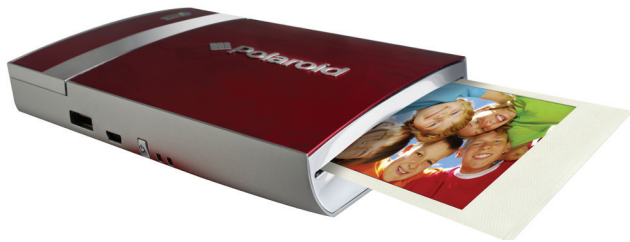


LED	Color	Action	Communication
	Green	Solid	Power on
	Orange	Solid	Power on, template enabled
	Green	Pulse	Receiving data, printing, cooling
	Orange	Pulse	Receiving data, printing, cooling - with template
	Red	Pulse (1x speed)	Out of paper, non-compatible paper, non-feed
	Red	Pulse (3x speed)	Paper jam
	Red	Solid	Template error
	Green	Solid	Fully charged
	Orange	Solid	Low battery
	Red	Solid	Out of battery
	Green	Pulse	Charging from AC adapter

Troubleshooting

PROBLEM	SOLUTION
The photo has streaks	DO NOT: <ul style="list-style-type: none">• Send another image to be printed. DO: <ul style="list-style-type: none">• Turn off the printer. Open the paper tray door and remove the photo paper. Place one sheet of photo paper upside down (with the watermark facing up) in the paper tray. Gently glide the photo paper under the print head. Close the paper tray door. The sheet of photo paper will automatically eject. Open the paper tray door and reload the photo paper.
The paper jammed before printing (nothing has been ejected)	DO NOT: <ul style="list-style-type: none">• Send another image to be printed. DO: <ul style="list-style-type: none">• Open paper tray door.• Check to see if there is paper in the tray.• If so, ensure the paper is loaded correctly.• If not, add a new pack of Polaroid ZINK Photo Paper.
The paper jammed while printing (part of the image has already ejected)	DO NOT: <ul style="list-style-type: none">• Pull out paper. DO: <ul style="list-style-type: none">• Turn off the printer. Open the paper tray door and remove media. Place one sheet of photo paper upside down (with the watermark facing up) in the paper tray. Gently glide the photo paper under the print head. Close the paper tray door. The sheet of photo paper will automatically eject. Open the paper tray door and reload the photo paper. Close the paper tray door.
If all else fails...	DO: <ul style="list-style-type: none">• Turn off the printer. If the printer will not power off, remove the battery cover and the battery. Replace the battery and batter cover. Turn on the printer.

For additional troubleshooting and frequently asked questions, visit www.polaroid.com.

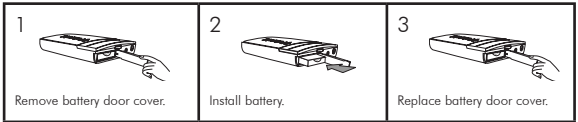


3x4" Instant Mobile Printer Quick Start Guide

For a complete user's manual and to download printer drivers, please visit www.polaroid.com.

Installing and Charging the Battery

To install the battery:

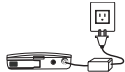


To charge the battery:

1. Install the battery (see above steps).
2. Connect the AC adapter to the printer and the power source.

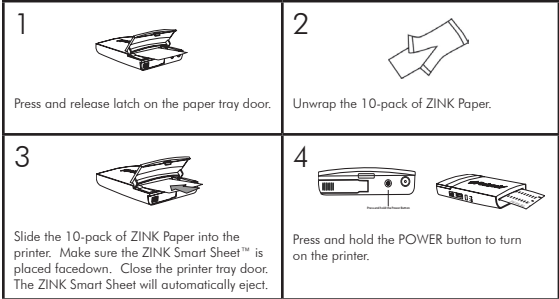
Notes:

- Before using the printer on battery power, fully charge the battery for 2.5 hours.
- You can print photos while plugged into the power source.



Installing ZINK Paper®

To install the Paper:



Notes:

- The printer must be empty before refilling. Do not fill the printer with more than one 10-pack of ZINK Paper. Having more than 10 sheets of paper may damage the printer.
- Avoid bending the ZINK Paper.
- Only hold the ZINK Paper by its edges; avoid touching the printing surface with your fingers.

Printing: Camera Cell Phone

Passcode: 6-0-0-0

For specific printing directions for your phone, visit www.polaroid.com.

The following is an example for connecting to the printer and print your images. The terminology used in your cell phone may be different.

1. Select the image you would like to print from the stored images on your camera cell phone. In the "options" menu, select "send via Bluetooth." Search for devices and select the Polaroid printer and print.
2. If you are unable to print from "send via Bluetooth," select "connectivity" or "Bluetooth" under the "settings" or "tools" menu. Search for devices and select the Polaroid printer. Once paired, go back to stored images and select the image you want to print. In the "options" menu, select "beam" or "send via Bluetooth". Select the Polaroid printer and print.
3. If your camera cell phone does not include "send via Bluetooth" under the "options" menu, select the image you want to print. Select the "options" menu and select "print via Bluetooth". Search for devices, select the Polaroid printer, and print.



Printing: Digital Camera

For specific print directions for your digital camera, please review your digital camera user's manual or manufacturer's website.

For additional troubleshooting for your camera, visit www.polaroid.com.

The following is an example for connecting to the printer and print your images. The terminology used in your camera may be different.

1. Connect your digital camera and printer to determine if a print option or printer icon is automatically displayed on the camera screen.
2. If no print option appears, select "menu" and navigate to confirm that PictBridge is enabled. Note: if "USB" is displayed under "settings" then PictBridge is NOT enabled.
3. Once PictBridge is enabled, select the image you want to print and follow the on-screen instructions to print.



Notes:

- Do not disconnect the USB cord until entire printing process is complete.
- Do not turn off the printer while printing.
- Do not open paper tray door while printing.
- To print the date on your photo, ensure the Date Stamp feature on your digital camera is enabled.