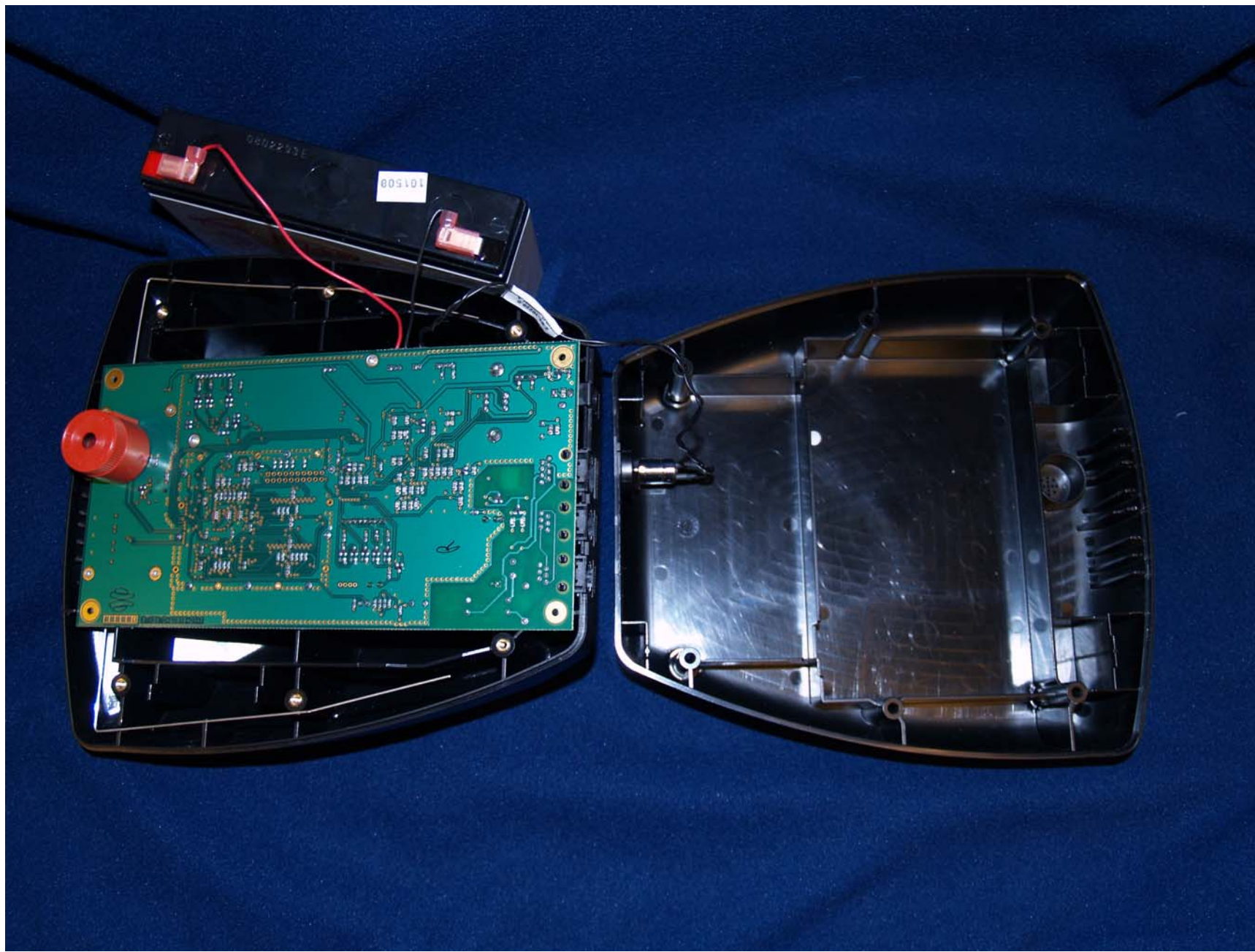


**Photo 1: HomeBase (HB-100) – Open showing Battery location to PCB**



**Photo 2: HomeBase (HB-100) – Open showing Battery out & connected**



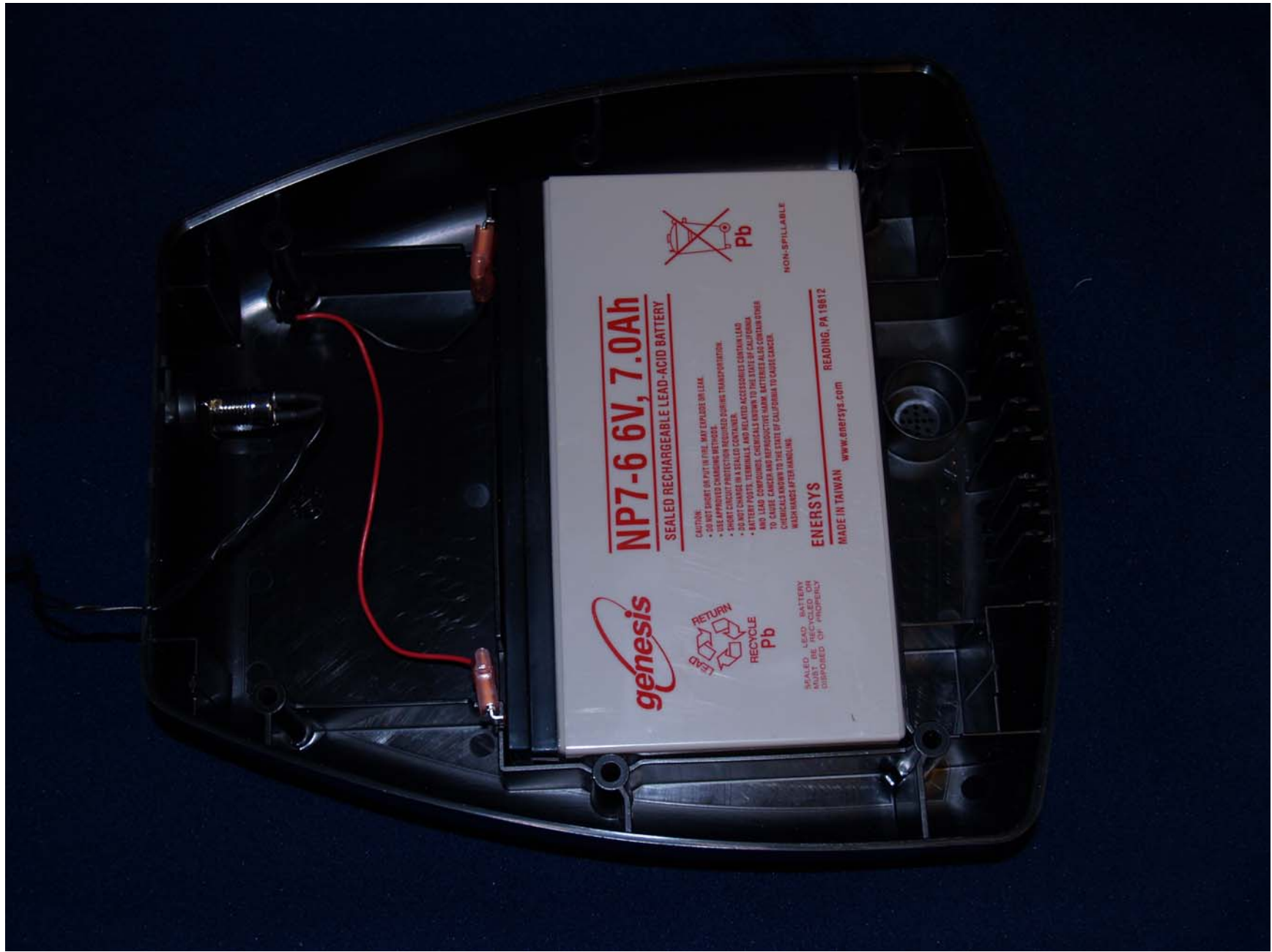
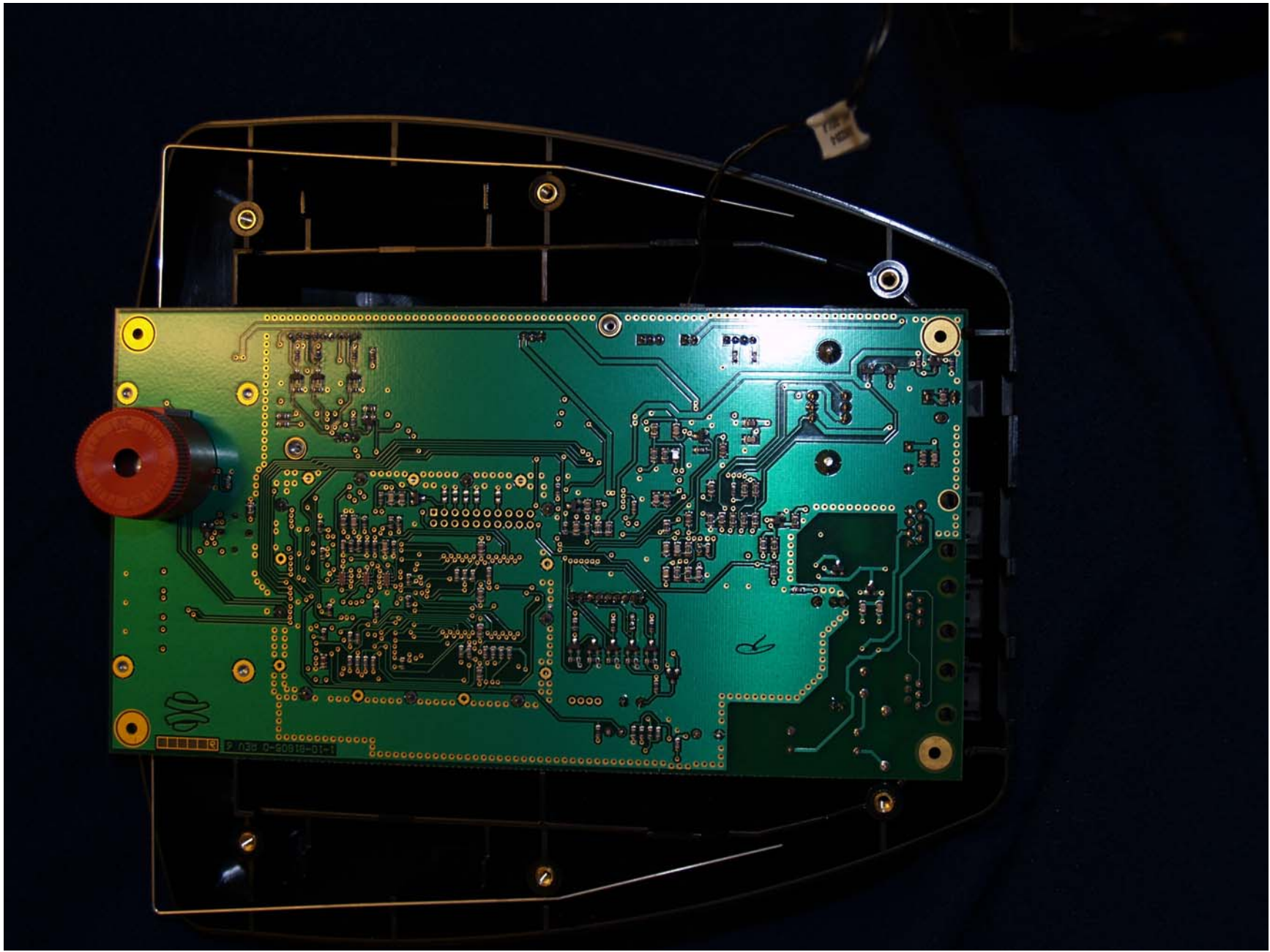


Photo 3: HomeBase (HB-100) – Open showing battery in enclosure (bottom case half)



**Photo 4: HomeBase (HB-100) – PCB (bottom view) in enclosure (top case half)**



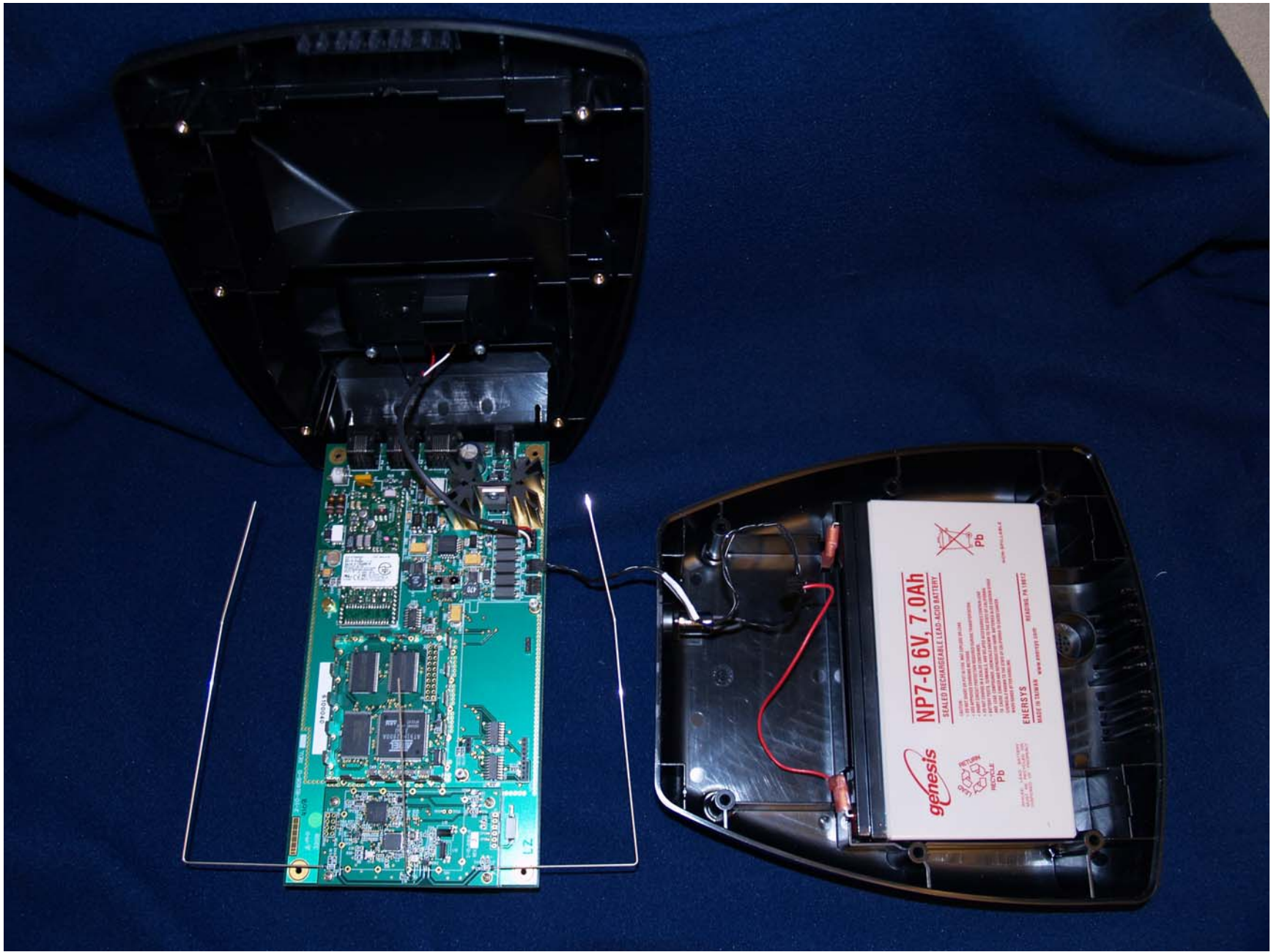


Photo 5: HomeBase (HB-100) – Open showing PCB out & connected

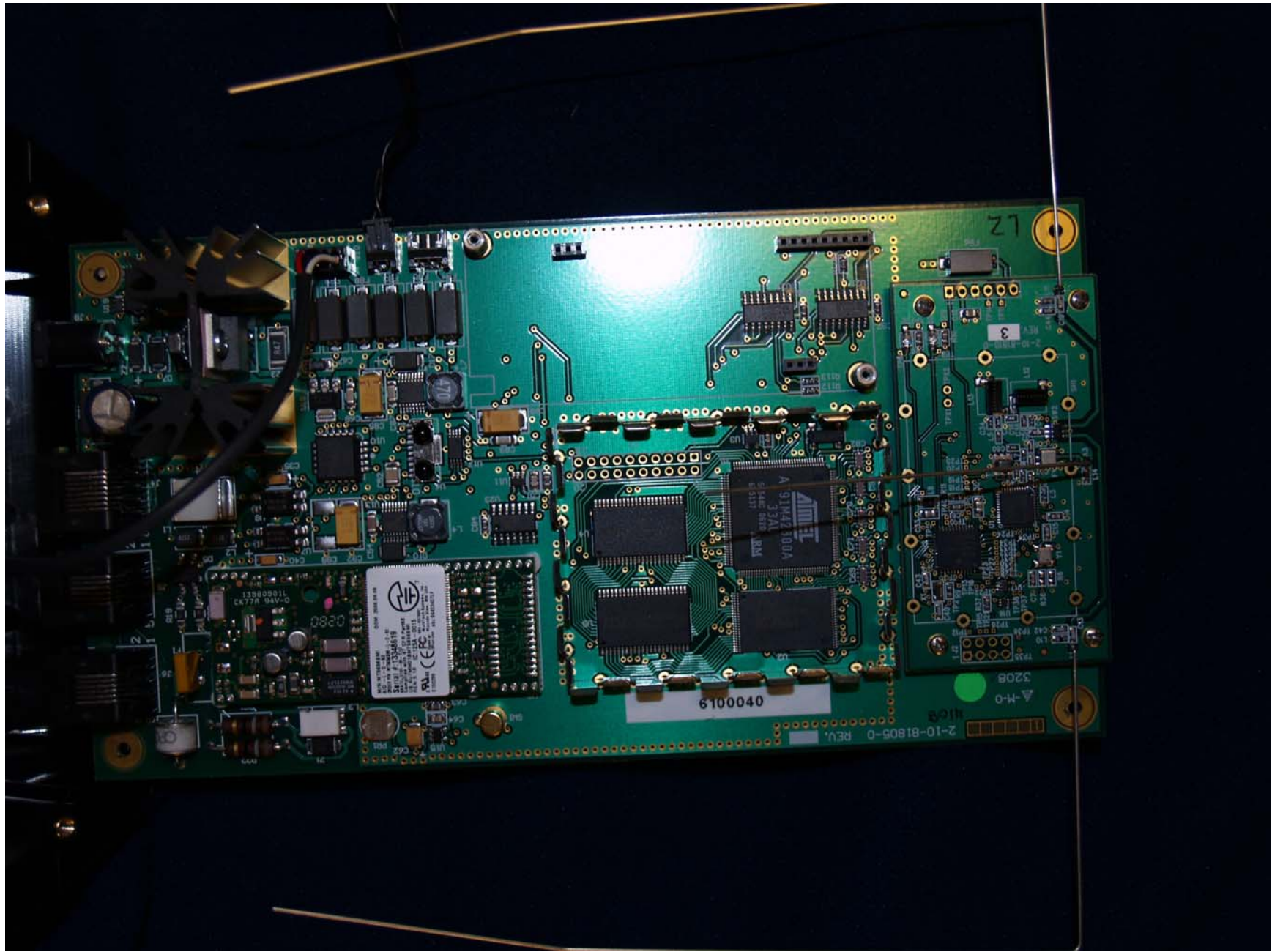


Photo 6: HomeBase (HB-100) – PCB top view





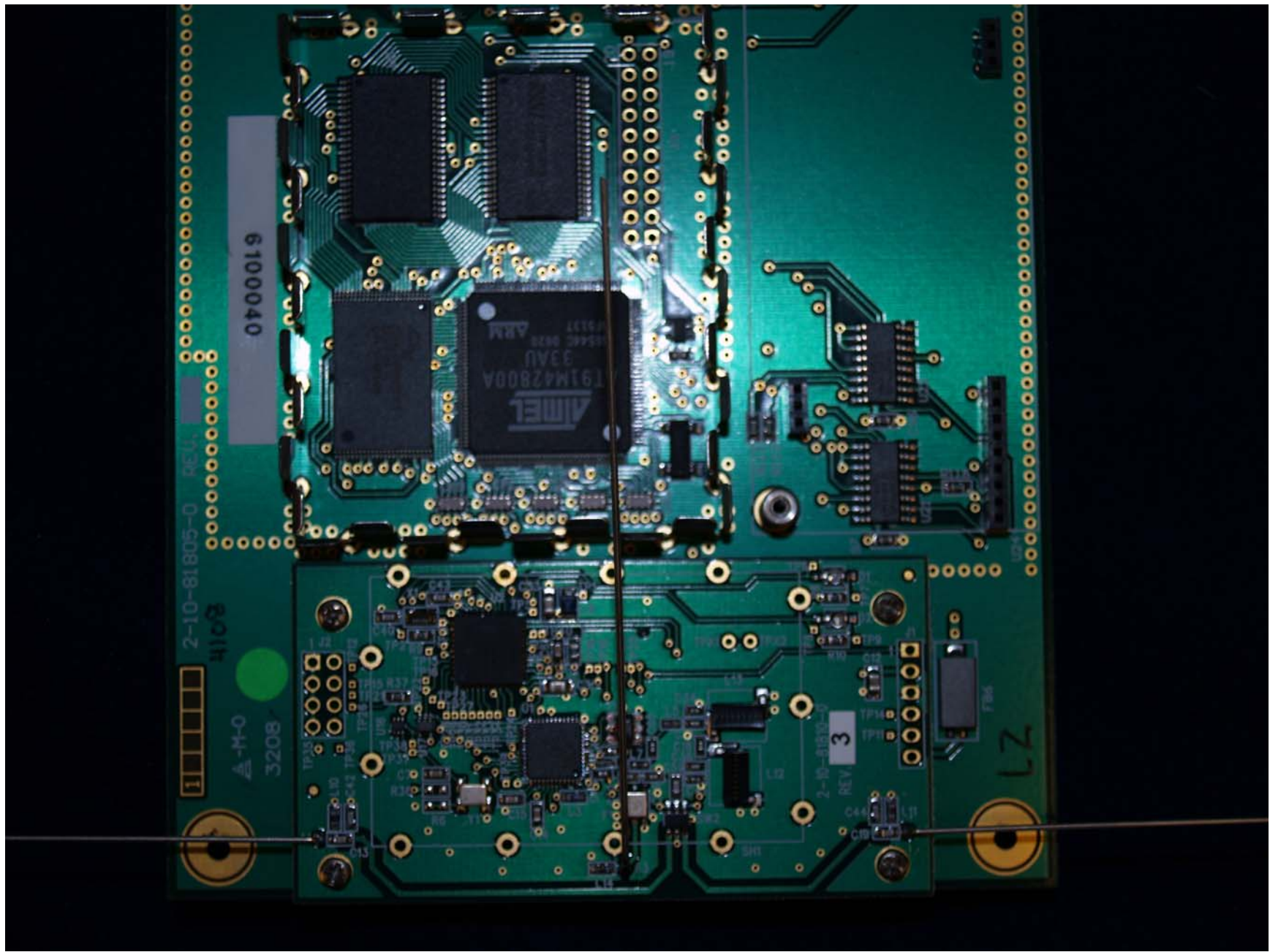


Photo 8: HomeBase (HB-100) – PCB (top view) close-up of front half



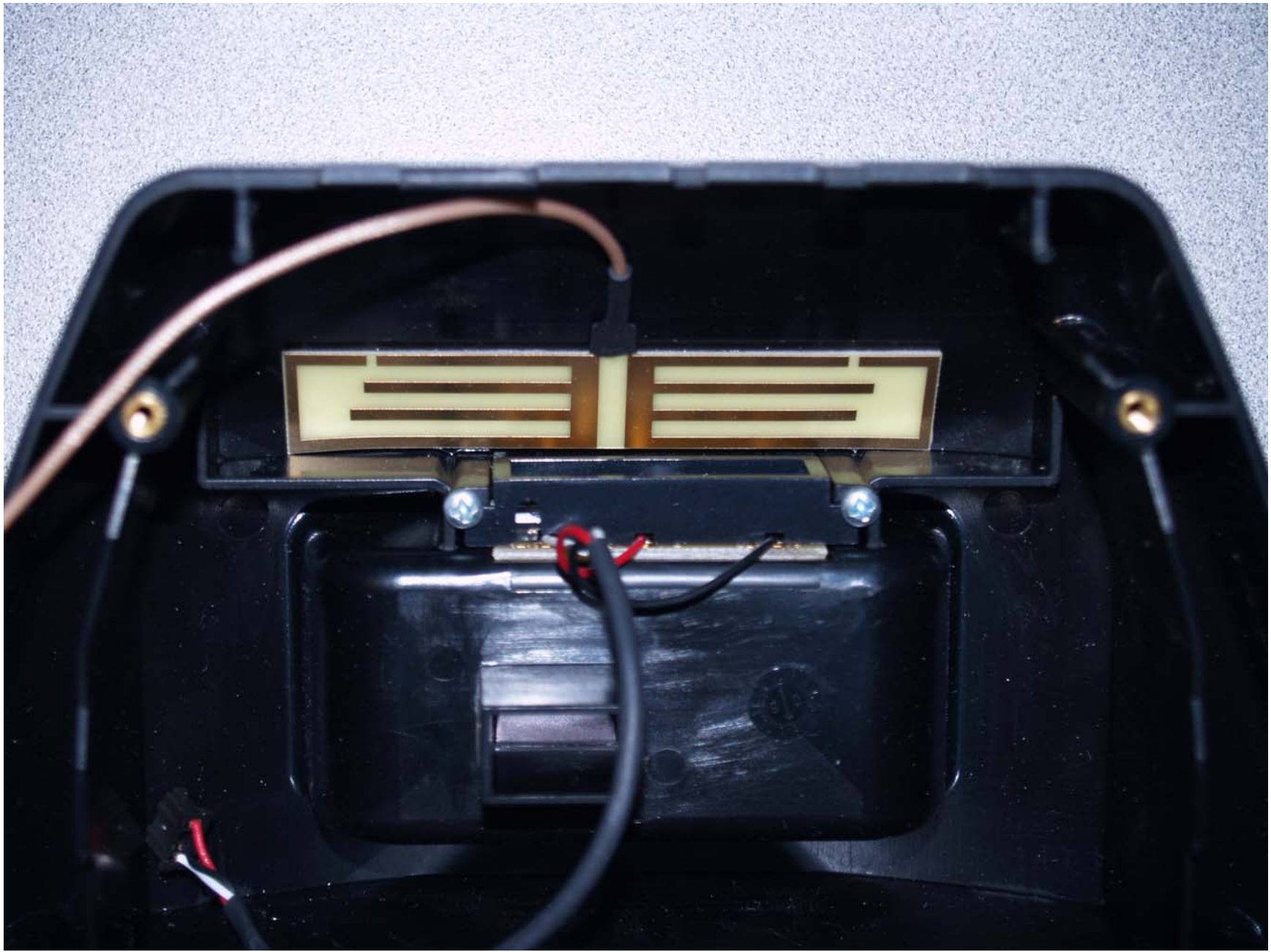
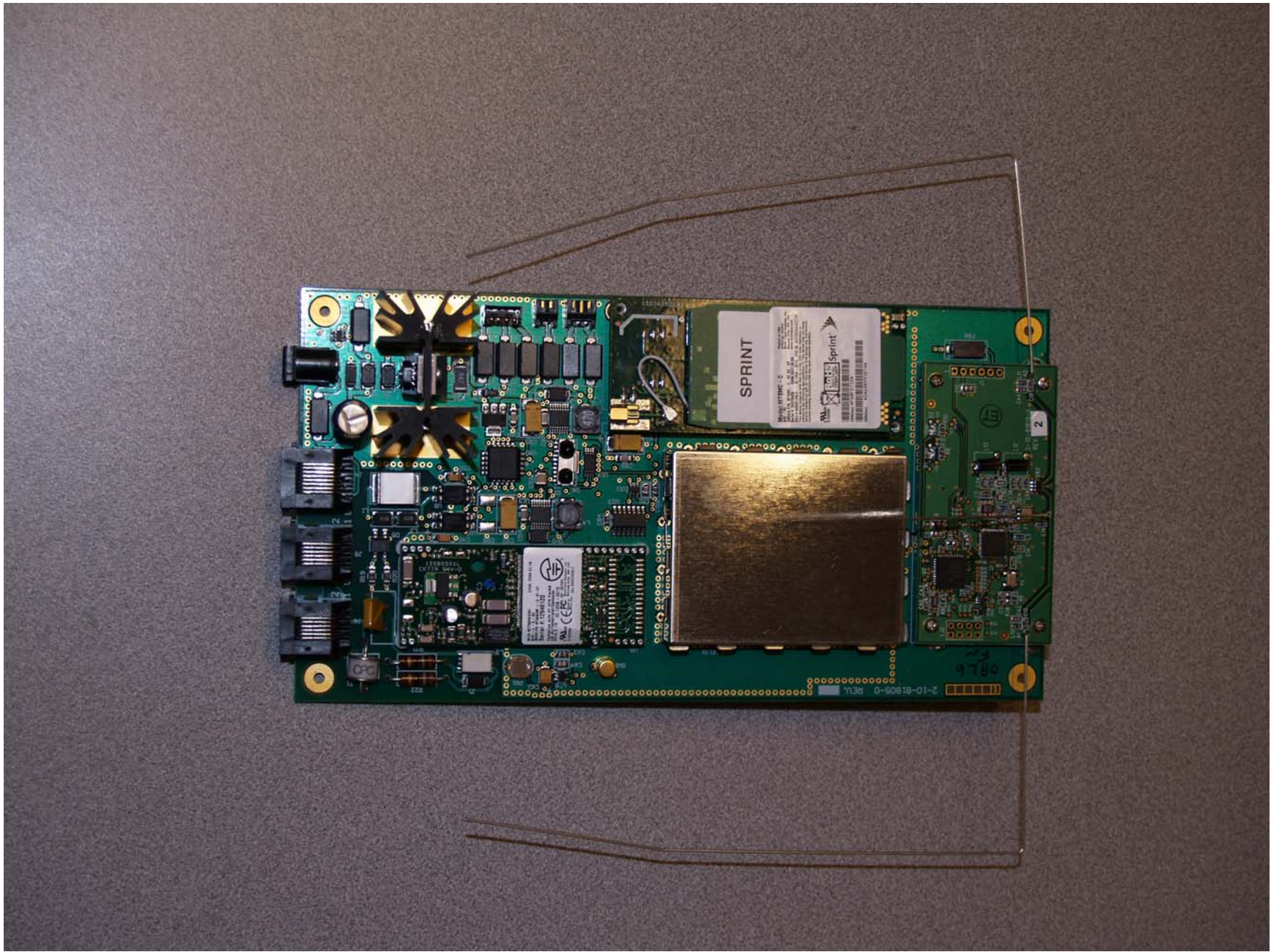


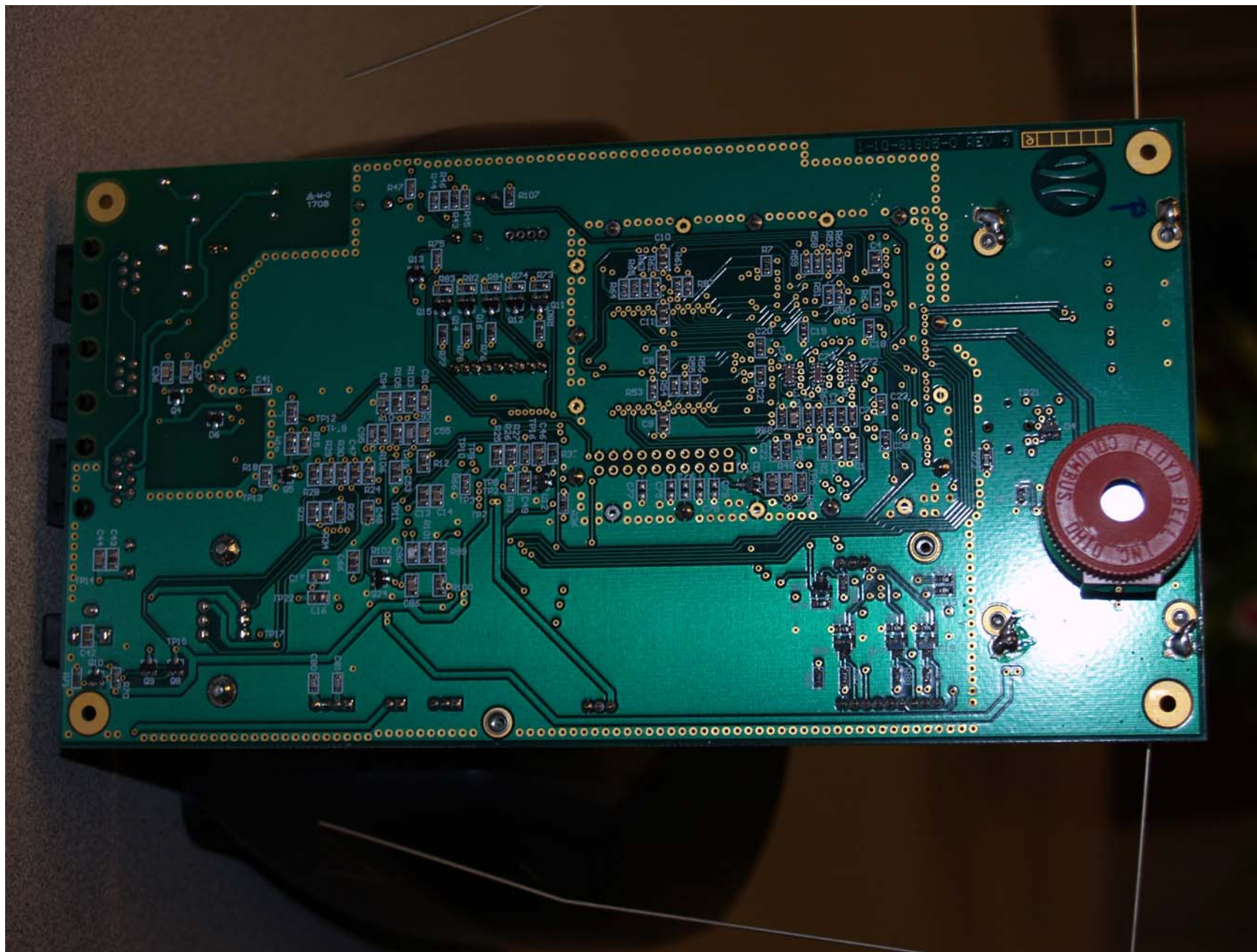
Photo 9: HomeBase (HB-100) – Inside top cover (antenna compartment)





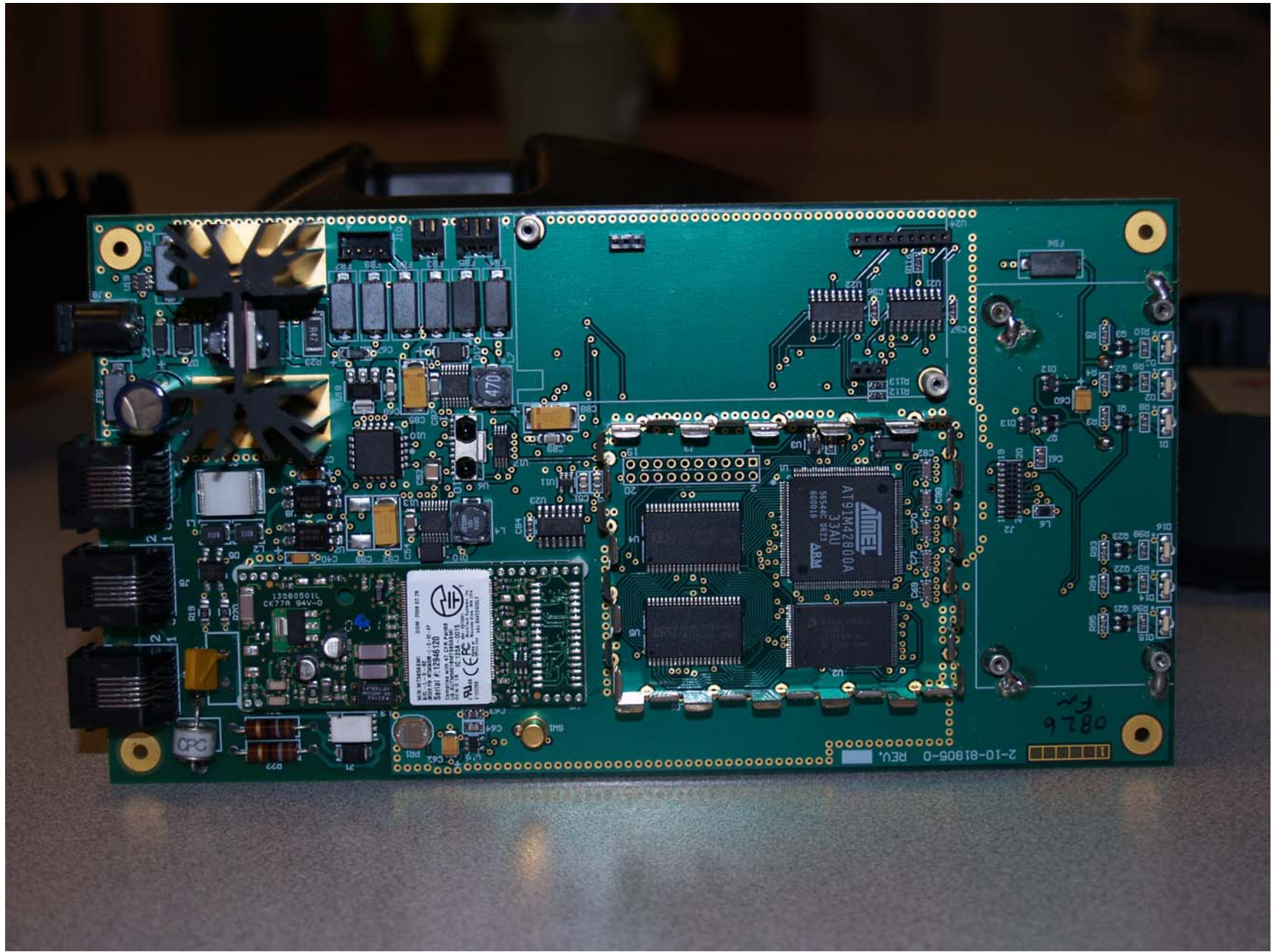
**Photo 10: HomeBase (HB-100) – DMFMD PCB (Main Board – top side) with antenna**





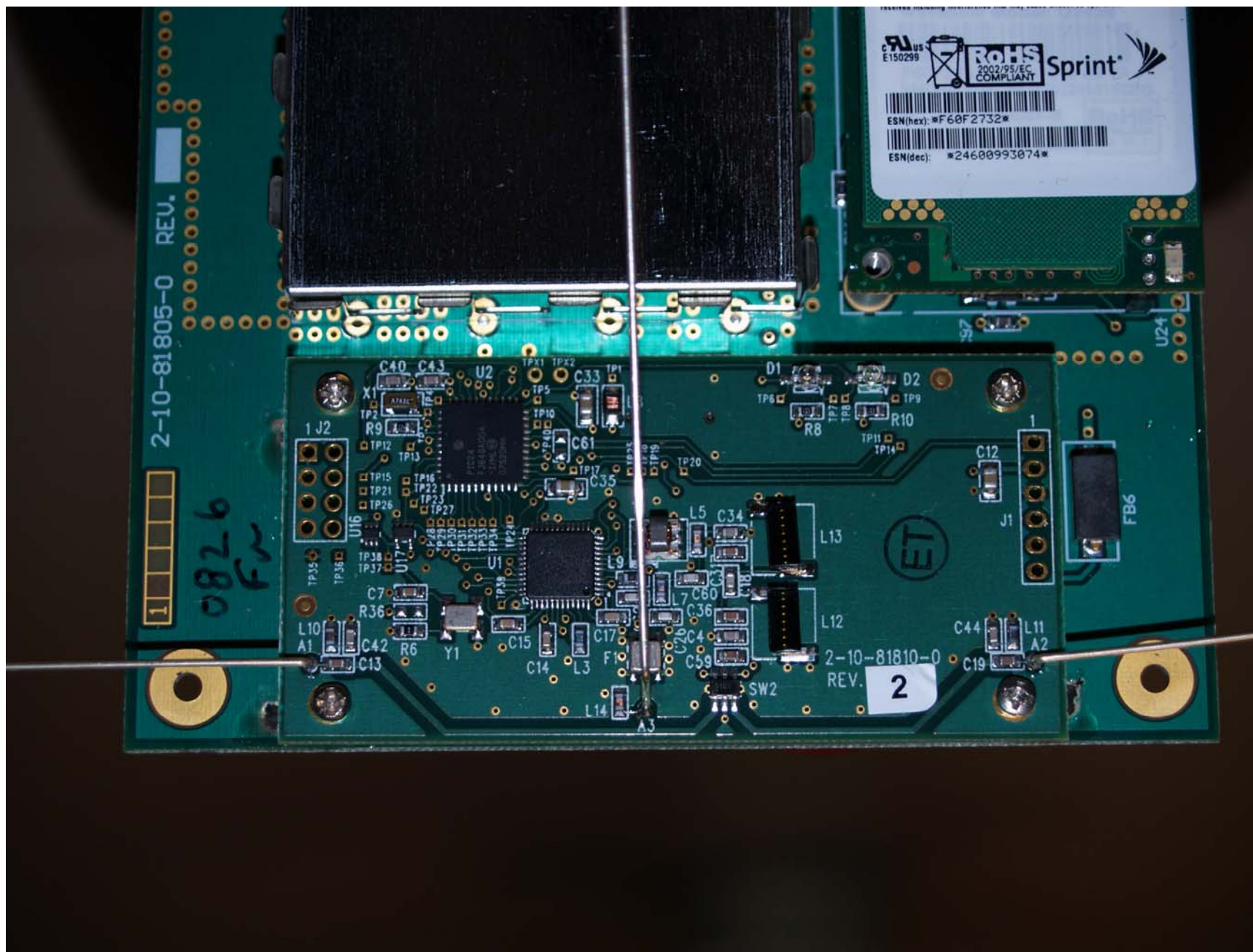
**Photo 11: HomeBase (HB-100) – DMFMD PCB (Main Board – bottom side) with antenna**



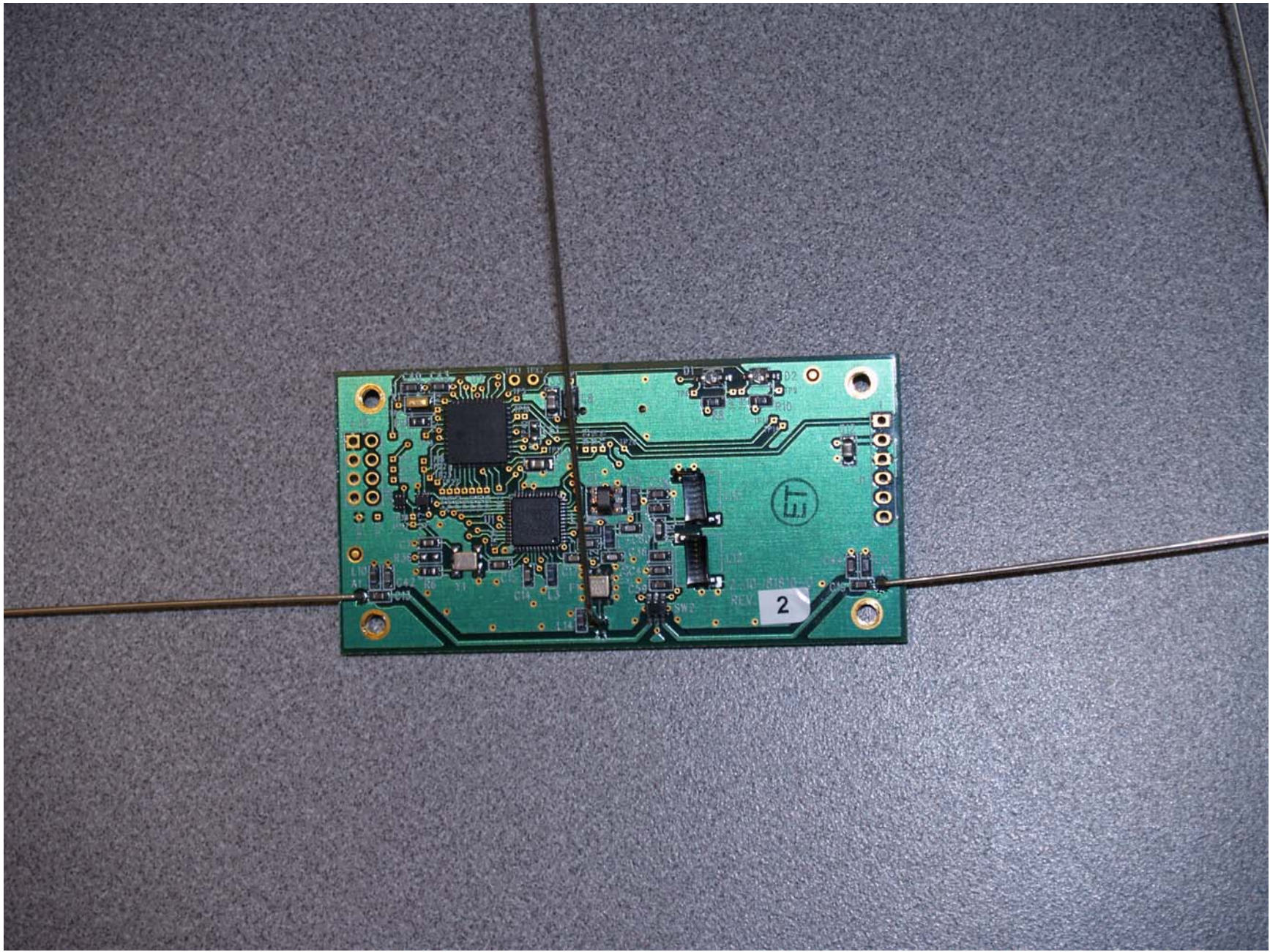


**Photo 12: HomeBase (HB-100) – DMFMD PCB (Main Board – top side) depopulated**



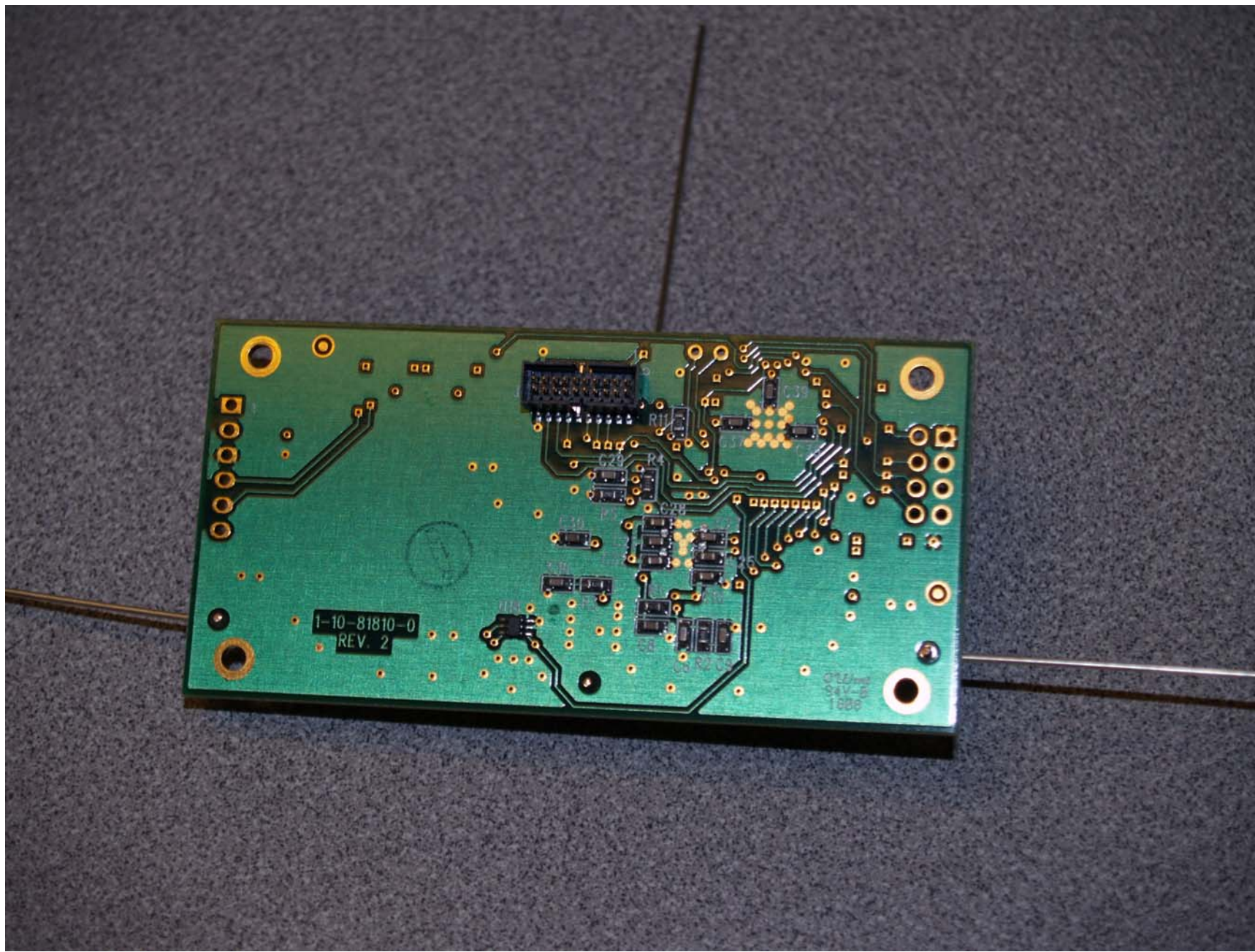






**Photo 14: HomeBase (HB-100) – DMFMD RF XCVR PCB – top side with antenna**





**Photo 15: HomeBase (HB-100) – DMFMD RF XCVR PCB – bottom side with antenna**



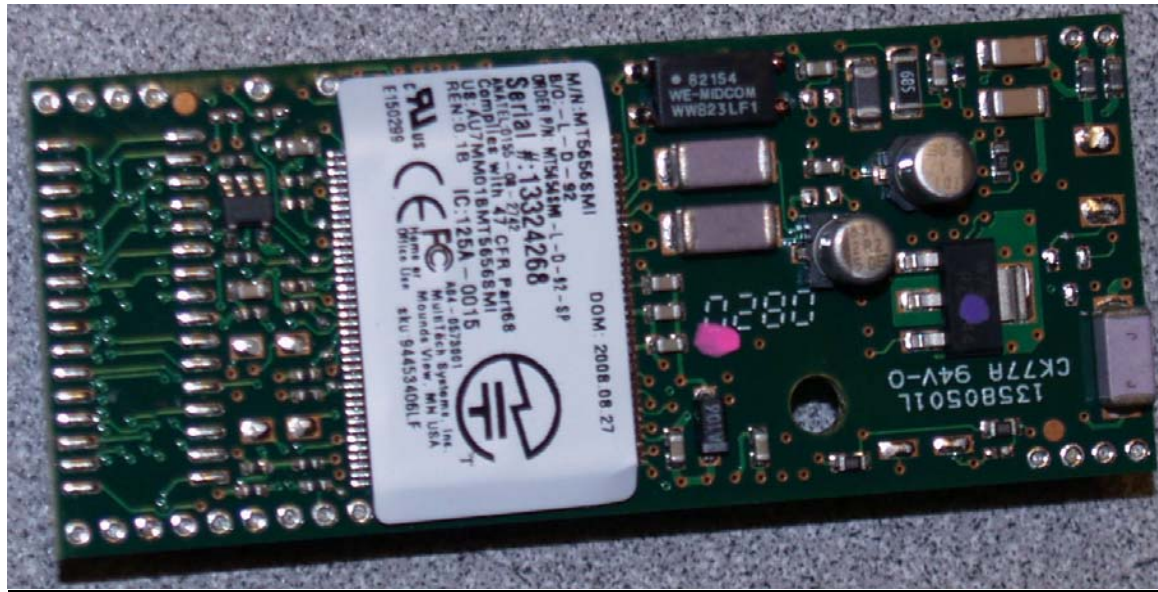


Photo 16: HomeBase (HB-100) – Modem PCB – top side

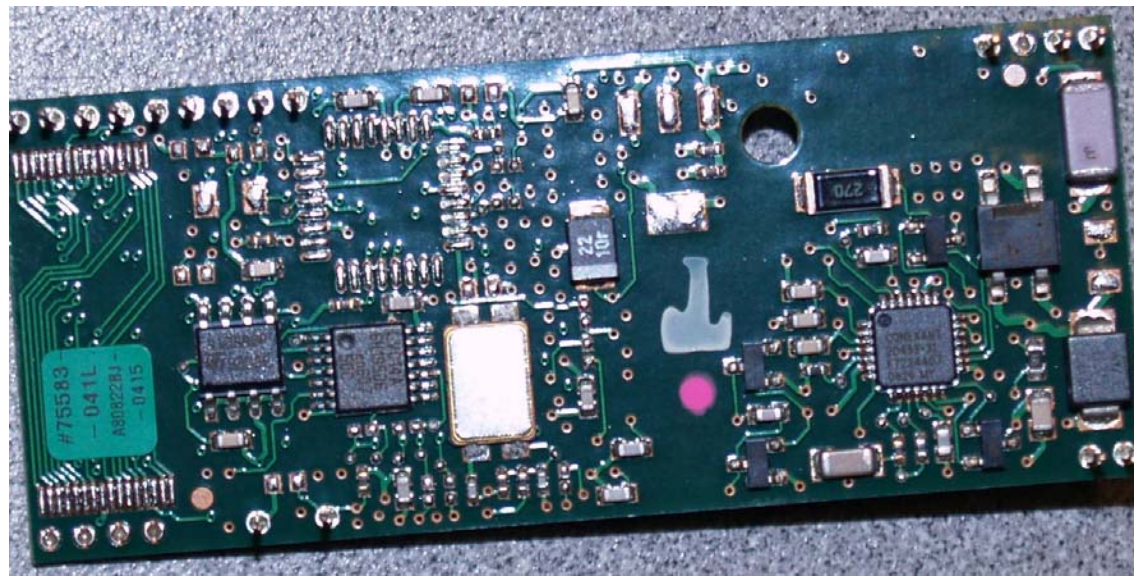


Photo 17: HomeBase (HB-100) – Modem PCB – bottom side





Photo 18: HomeBase (HB-100) – Sprint CDMA Modem PCB – top side

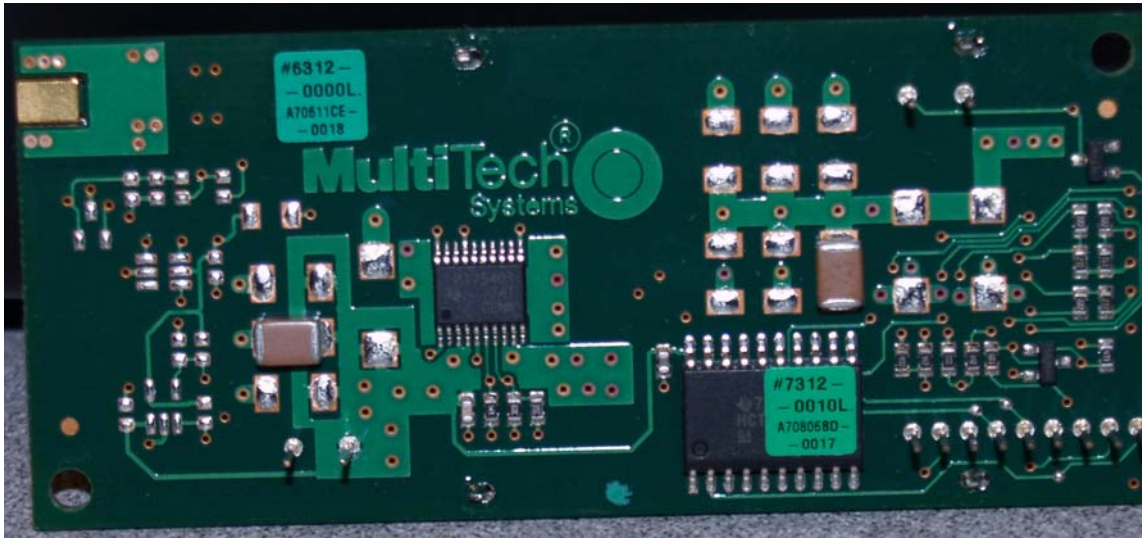


Photo 19: HomeBase (HB-100) – Sprint CDMA Modem PCB – bottom side



Photo 20: HomeBase (HB-100) – Verizon CDMA Modem PCB – top side

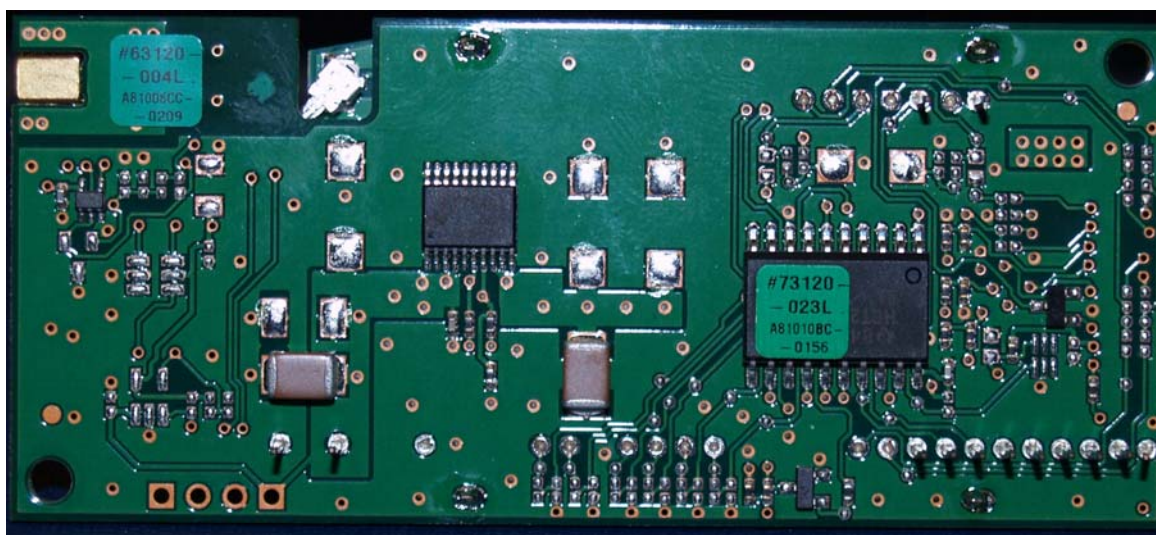


Photo 21: HomeBase (HB-100) – Verizon CDMA Modem PCB – bottom side