

SGS

# Test setup photos of EUT

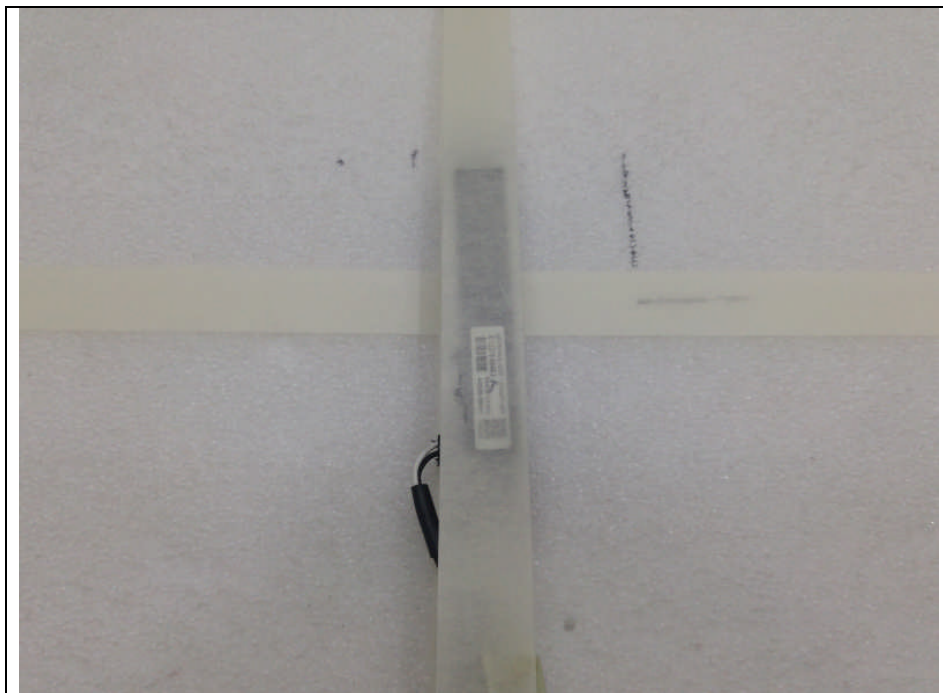
## 1. Orthogonal planes of EUT

- The testing was set in the below orthogonal plane and measured.

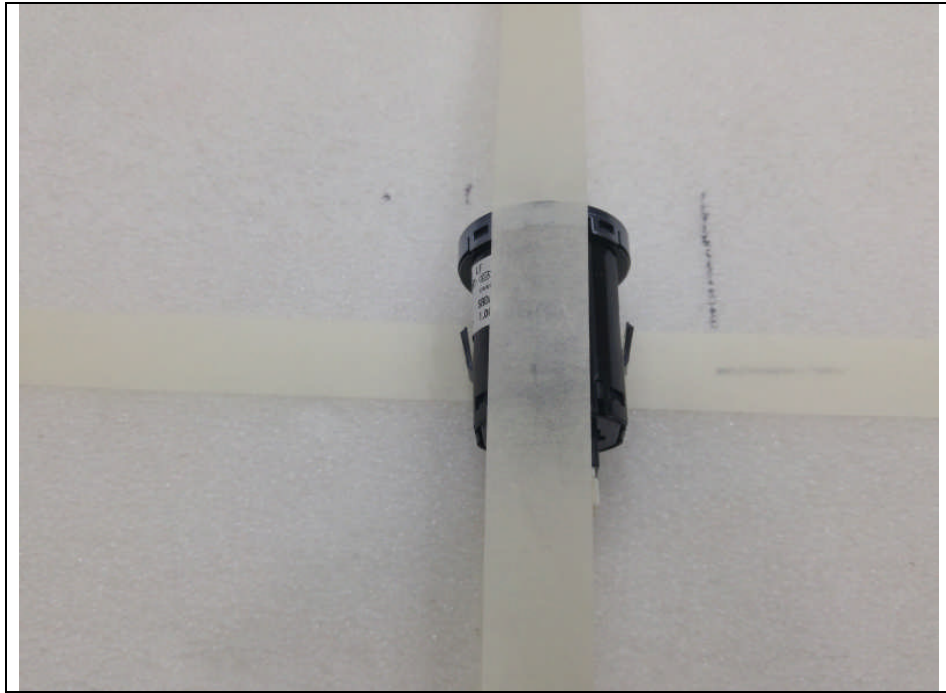
### X-axis: AST & DRV Antenna



### X-axis: BUM & INT & INT3 & TNK Antenna



## X-axis: SSB Antenna



## 2. Photo of Radiated Spurious Emission Test (Below 30 MHz)

