

Test Laboratory: Compliance Certification Services Inc.

System check 20120905_BSL2450

Communication System: CW; Frequency: 2450 MHz; Duty Cycle: 1:1

Medium parameters used: $f = 2450$ MHz; $\sigma = 1.96$ mho/m; $\epsilon_r = 51.8$; $\rho = 1000$ kg/m³

Phantom section: Flat Section

Air Temperature: 24.2 deg C; Liquid Temperature: 23.2 deg C

Area Scan Find Secondary Maximum Within 2dB and with a peak SAR value greater than 0.0012W/kg

DASY4 Configuration:

- Probe: EX3DV4 - SN3554; ConvF(6.18, 6.18, 6.18);
- Sensor-Surface: 2.5mm (Mechanical Surface Detection) Sensor-Surface: 0mm (Fix Surface)
- Electronics: DAE4 Sn558; Calibrated: 2012/7/19
- Phantom: Flat Phantom EL14.0; Type: QDOVA001BA; Serial: SN: 1052
- Measurement SW: DASY4, V4.7 Build 80; Postprocessing SW: SEMCAD, V1.8 Build 186

Pin=250mW, d=10mm/Area Scan (7x9x1): Measurement grid: dx=15mm, dy=15mm

Maximum value of SAR (measured) = 16.5 mW/g

Pin=250mW, d=10mm/Zoom Scan (7x7x7)/Cube 0: Measurement grid: dx=5mm, dy=5mm, dz=5mm

Reference Value = 93.4 V/m; Power Drift = -0.039 dB

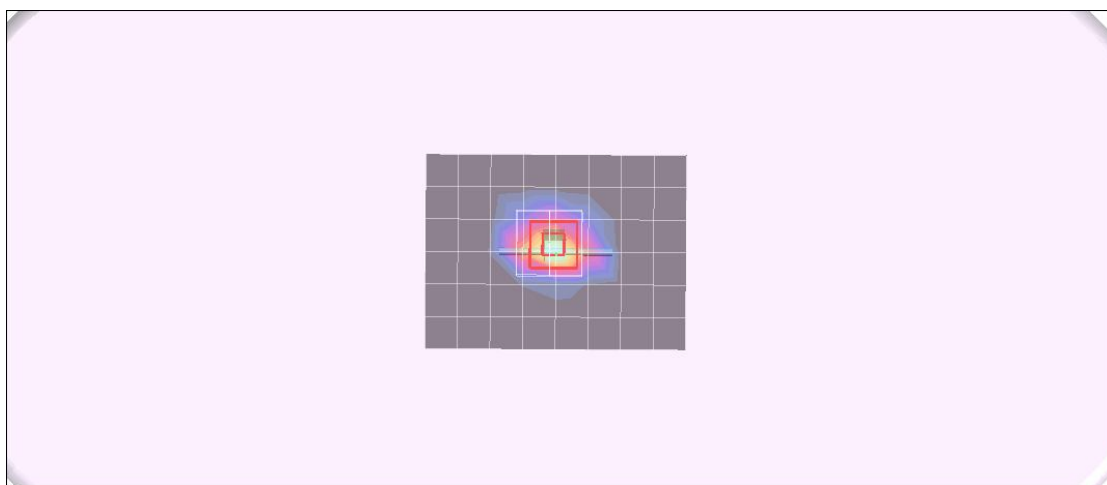
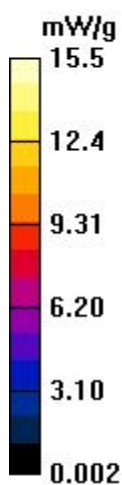
Peak SAR (extrapolated) = 27.1 W/kg

SAR(1 g) = 13.6 mW/g; SAR(10 g) = 6.43 mW/g

Maximum value of SAR (measured) = 19.0 mW/g

Pin=250mW, d=10mm/Z Scan (1x1x11): Measurement grid: dx=20mm, dy=20mm, dz=10mm

Maximum value of SAR (measured) = 15.5 mW/g



SAR(x,y,z,f0)

SAR; Z Scan: Value Along Z, X=0, Y=0

