

APPENDIX

01. Photographs of Test Setup



Fig.1 Photograph of the SAR measurement system

Photograph of the tissue simulant fluid liquid depth (Body)

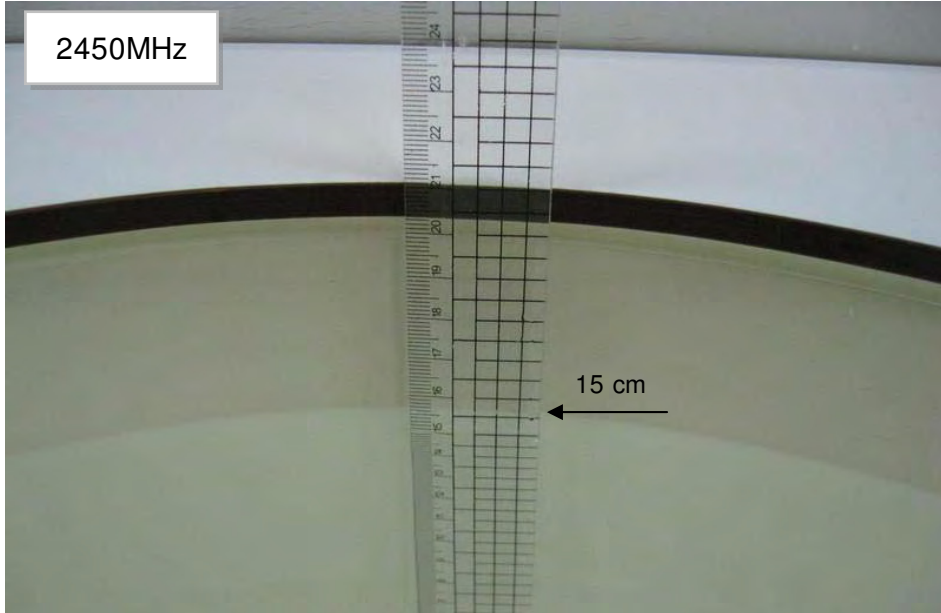


Fig.2.1

Body - distance between flat phantom and EUT is 0 mm

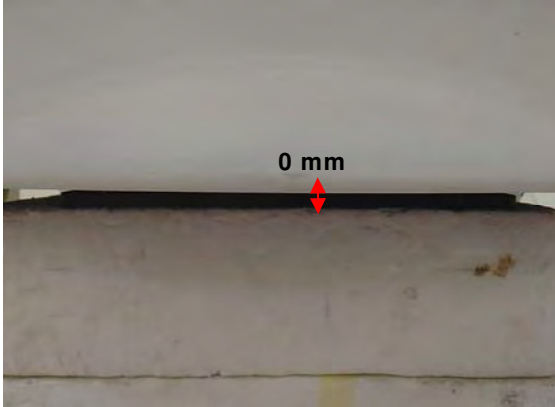


Fig.3 EUT Back side to flat phantom

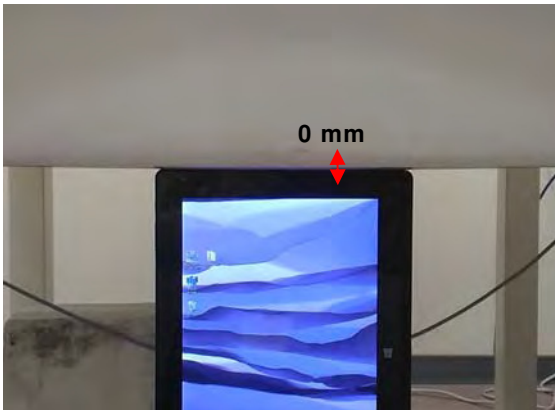


Fig.4 EUT Right side to flat phantom

11. Photographs of the EUT



Fig.5 Front view of EUT



Fig.6 Back view of EUT

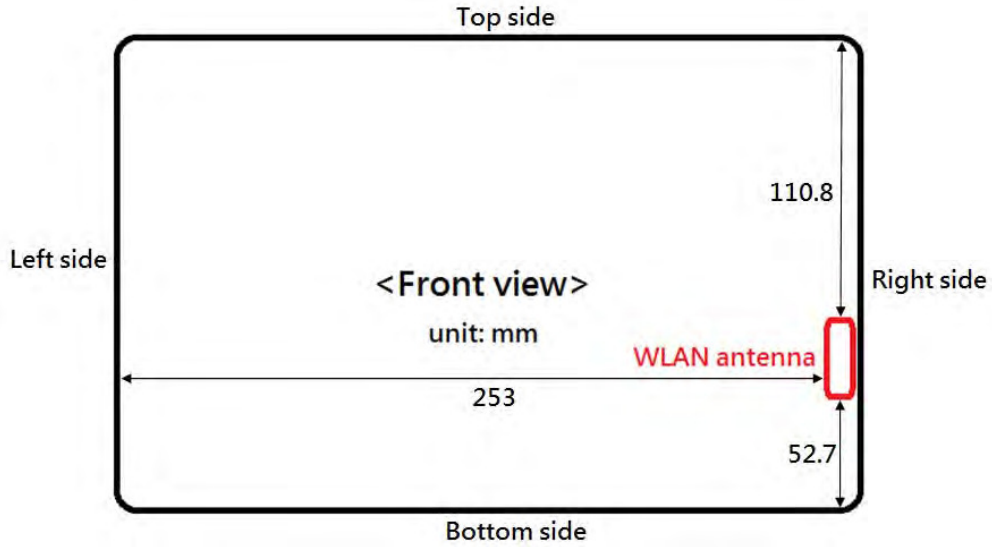


Fig.7 Antenna position of EUT (Front view)

- End of Report -