
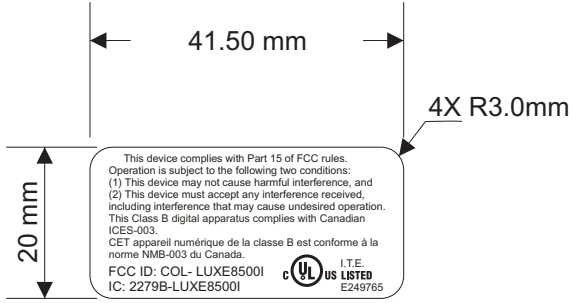


REVISIONS				
REV	ECO	DESCRIPTION	DATE	APPROVED
1		PRELIMINARY	09/27/16	TRN
2		Change to Class B	11/08/16	TRN


This device complies with Part 15 of FCC rules. Operation is subject to the following two conditions:
 (1) This device may not cause harmful interference, and
 (2) This device must accept any interference received, including interference that may cause undesired operation.
 This Class B digital apparatus complies with Canadian ICES-003.
 CET appareil numérique de la classe B est conforme à la norme NMB-003 du Canada.

FCC ID: COL- LUXE8500I
 IC: 2279B-LUXE8500I

This device complies with Part 15 of FCC rules. Operation is subject to the following two conditions:
 (1) This device may not cause harmful interference, and
 (2) This device must accept any interference received, including interference that may cause undesired operation.
 This Class B digital apparatus complies with Canadian ICES-003.
 CET appareil numérique de la classe B est conforme à la norme NMB-003 du Canada.

FCC ID: COL- LUXE8500I
 IC: 2279B-LUXE8500I



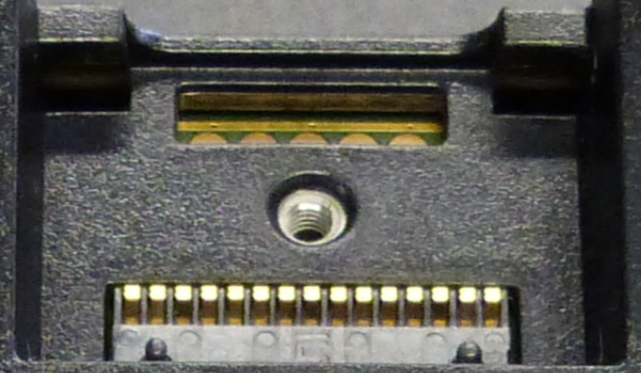
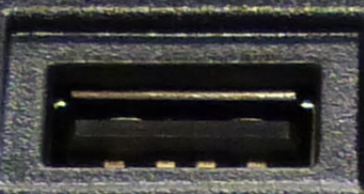
SCALE: 2/1

- THIS LABEL SHALL BE CONSTRUCTED BY A UL RECOGNIZED 'MARKING AND LABELING SYSTEMS' MANUFACTURER USING UL RECOGNIZED MATERIALS AND PROCESSES. A UL AUTHORIZED PRINTER USING UL RECOGNIZED MATERIALS AND PROCESSES MAY IMPRINT THIS LABEL. UL RECOGNIZED IDENTIFICATION MARKINGS (FINISHED LABEL SUPPLIER NAME AND LABEL DESIGNATION) SHALL BE PROVIDED ON THE SMALLEST BUNDLE OR UNIT CONTAINER IN WHICH THIS LABEL IS PACKAGED. THESE UL RECOGNITION MARKINGS SHALL BE RETAINED BY THE END SYSTEM MANUFACTURER IN A SPECIFIC FILE FOR PROOF OF UL RECOGNITION OF THIS LABEL.
- THIS LABEL SHALL BE IN CONFORMANCE WITH THE DURABILITY TEST DESCRIBED IN CLAUSE 1.7.13 OF IEC 60950-1.
- A CERTIFICATE OF CONFORMITY SHALL CONSPICUOUSLY ACCOMPANY EACH SHIPMENT THAT SHALL BE IN CONFORMANCE WITH THE Cofc SPECIFICATION, 950025-007E.
- THIS PART SHALL BE FULLY ROHS COMPLIANT. EVIDENCE OF ROHS COMPLIANCE PROVIDED BY SUPPLIERS SHALL BE IN CONFORMANCE WITH THE ROHS SUPPLIER DOCUMENTATION ACCEPTABILITY CRITERIA SPECIFICATION, 950212-002E.
- THIS LABEL SHALL NOT BE SUITABLE FOR ADDITIONAL PRINTING.

Notes (Unless Otherwise Specified):

1. Material: Polyester 2 Mil Matte Silver CP, Adhesive TS 523, With Release Liner.
2. This PDF document has been created as a Prepress PDF and is a EQUINOX approved artwork source.
3. Labels shall be Identified with EQUINOX Part Number and Rev, either Labeled or Printed Clearly on Inside of Carrier Core or On back of Sheet release liner.
4. Tolerance ± 0.35mm


PROPRIETARY NOTICE		EQUINOX		EQUINOX PAYMENTS, LLC www.equinoxpayments.com	
THIS DOCUMENT CONTAINS PROPRIETARY AND CONFIDENTIAL INFORMATION OF EQUINOX PAYMENTS AND SHALL NOT BE DISCLOSED TO OTHERS, IN WHOLE OR IN PART, WITHOUT THE EXPRESS WRITTEN CONSENT OF EQUINOX PAYMENTS.		TITLE: LABEL, COMPLIANCE 41.50 X 20.00MM LUXE 8500i			
CREATED BY: T. NELSON	DATE: 09/27/16	SIZE A	FILE NAME: 700519-002E_2	DWG NO. 700519-002E	REV 2
APPROVED BY: T. NELSON	DATE: 09/27/16	SCALE: 100%		SHEET 1 OF 1	



RESET



This device complies with Part 15 of FCC rules.
 Operation is subject to the following two conditions:
 (1) This device may not cause harmful interference, and
 (2) This device must accept any interference received,
 including interference that may cause undesired operation.
 This Class B digital apparatus complies with Canadian
 ICES-003.
 CET appareil numérique de la classe B est conforme à la
 norme NMB-003 du Canada.

FCC ID: COL- LUXE8500I  I.T.E. US LISTED E249765
 IC: 2279B-LUXE8500I



EQUINOX
 Model: Luxe 8500i
 P/N : 010390 - 002E 6E5
 Power: 9-12V --- 1.0A

MADE IN MALAYSIA



S/N : A1639003000023

