

LUXE™ 6200m FAMILY

INSTALLATION GUIDE

WARNING

- Only use the provided Equinox Payments A/C Power Adapter. Non-compliant power adapters may damage the device.
- Do not use if visibly damaged.
- Do not expose to temperatures below -10 °C or above 60 °C storage (not powered).
- Do not disassemble.
- Intended operating humidity range is 5% to 95% rh (non-condensing).
- This device is not designed or certified to be used in a flammable atmosphere such as a petrol station or chemical depot where there is a risk of explosion.
- Keep out of reach of children or pets.
- Do not incinerate or crush.

SAFETY INFORMATION

This device must be used within the operating conditions, electrical supply requirements, environmental conditions and connection requirements as specified below:

- Power Supply: These devices must be connected to the correct electrical supply. Connection to an inappropriate supply may damage or destroy this device(s), thereby invalidating its warranty(s).
- Only operate this device within the temperature range of 0 °C - 45 °C.
- Hazardous Environments: This device must NOT be installed in locations where there is danger of explosion.

COMPLIANCE

- FCC ID: COL-LUXE6200M
- IC: 2279B-LUXE6200M
- UL/cUL Listed E249765

This device complies with Part 15 of FCC Rules and Industry Canada license-exempt RSS standard(s). Operation is subject to the following two conditions:

- 1) This device may not cause interference, and
- 2) This device must accept any interference, including interference that may cause undesired operation of the device.

NOTE: This equipment has been tested and found to comply with the limits for a Class B digital device, pursuant to part 15 of the FCC Rules. These limits are designed to provide reasonable protection against harmful interference in a residential installation. This equipment generates, uses and can radiate radio frequency energy and, if not installed and used in accordance with the instructions, may cause harmful interference to radio communications. However, there is no guarantee that interference will not occur in a particular installation. If this equipment does cause harmful interference to radio or television reception, which can be determined by turning the equipment off and on, the user is encouraged to try to correct the interference by one or more of the following measures:

- Reorient or relocate the receiving antenna.
- Increase the separation between the equipment & receiver.
- Connect the equipment into an outlet on a circuit different from that to which the receiver is connected.
- Consult the dealer or an experienced radio/TV technician for help.

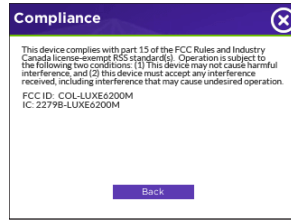
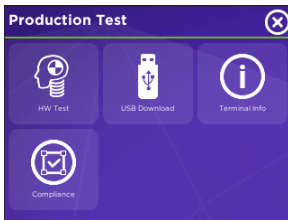
WARNING: Changes or modifications to the equipment that are not expressly approved by the responsible party for compliance could void the user's authority to operate the equipment.

If trouble is experienced with this device, please contact Equinox Payments at 1.877.497.3726 for repair or warranty information. If this device is causing harm to the telephone network, the telephone company may request that you disconnect.

TO OBTAIN FCC &ISED CERTIFICATION NUMBERS

From the Luxe terminal screen, click on the **Compliance** icon to display the FCC/IC information (see Compliance screen).

The Compliance screen displays the FCC/IC certification numbers applicable to the device.



NOTICES

If a power supply was NOT shipped with the Luxe terminal or if there is NOT an immediately available power supply to use with the Luxe terminal, use the following when selecting and using a suitable power supply:

- Must use Equinox P/N **870088-001E**
- Must use a suitably safety Listed power supply, output rated 9-12Vdc 2A or greater AND must be a certified Limited Power Source (marked "LPS").

CLEANING DEVICE



WARNING:

- Do NOT use industrial strength or an abrasive cleaner as it may damage or scratch the device/screen.
- Do NOT immerse device in any liquid.
- Do NOT spray water or cleaner into MSR or Smart Card Reader slots or ports.

Apply distilled water or mild cleaner on to a soft, lint free cloth. To clean, gently wipe down the terminal.

Equinox Payments
9045 E. Pima Center Pkwy, Suite 3, Scottsdale, AZ 85258, USA | Tel: +1.877.497.3726 | Fax: +1.480.551.7811 | www.EquinoxPayments.com

© 2018-19 Brookfield Equinox LLC (DBA Equinox Payments), all rights reserved. Equinox Payments & the Equinox Payments logo are registered trademarks of Equinox Payments. Information within this guide may not match the terminal device and its accessories exactly and thus are subject to change. 940663-001E Rev. D 01/19

LUXE™ 6200m FAMILY

INSTALLATION GUIDE



SHIPPING CONTENTS*



Luxe 6200m:

- Base device
- Communication Cable
- Power + Ethernet HUB
- Power Supply
- Power Cable
- Installation Guide

* Contents may not match exactly as shown.
Guide applies to 1 Luxe 6200m configuration: Base



9 4 0 6 6 3 - 0 0 1 E

EQUINOX

LUXE™ 6200m FAMILY INSTALLATION GUIDE

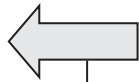
STEP 1: Unpack Terminal & Insert Cable End

STEP 2: Insert Data Cable Into HUB

STEP 3: Insert Power Cable into HUB and Plug Into Wall for Power



STEP 4
Press GREEN key to
POWER ON the device



STEP 1

Connect appropriate cable end into the appropriate HUB (as shown in the Accessories section):

- USB
- Ethernet
- Serial RS232)
- Power USB (PUSB)
- Dual Ethernet Switch
- Dial
- Ethernet + Dial
- Ethernet USB

STEP 2

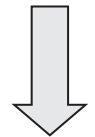


STEP 3

870088-001E Power Supply



810003-001 Power Cable



STEP 3



ACCESSORIES

Contact your Equinox Sales person or:
 • 1.877.497.3726
 • 480.551.7800
 • info@equinoxpayments.com



Power Cable (810003-001)
NOTE: Use with 870088-001E



Power Supply (870088-001E)
NOTE: Use with 810003-001



Power + Ethernet + Dial HUB (020400-304E)



Power + Ethernet + USB-B HUB (020400-303E)



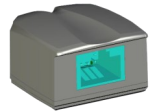
Power + Ethernet HUB (020400-302E)



Power + 2 Ethernets HUB (020400-301E)



Power + USB-B Mini HUB (020400-351E)



PUSB-B Mini HUB (020400-352E)