

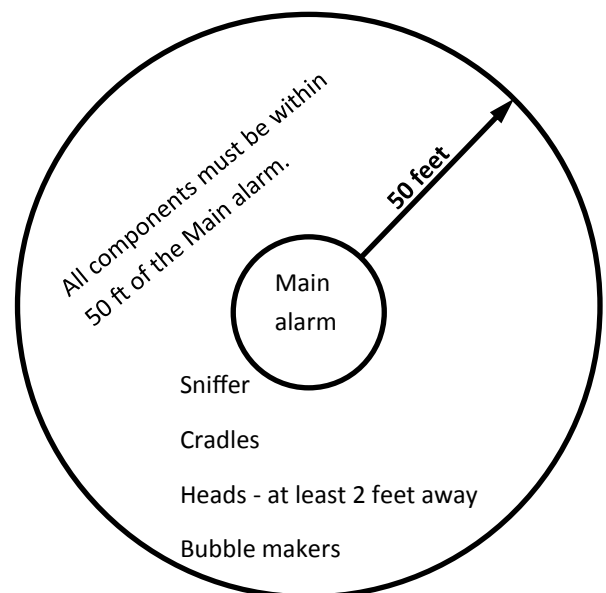
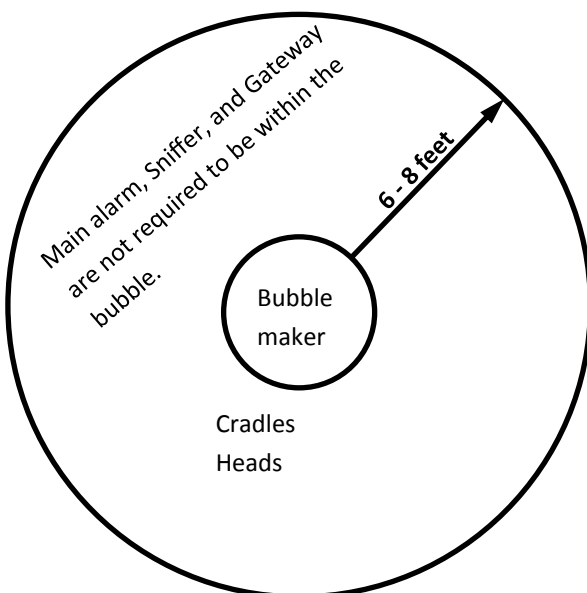
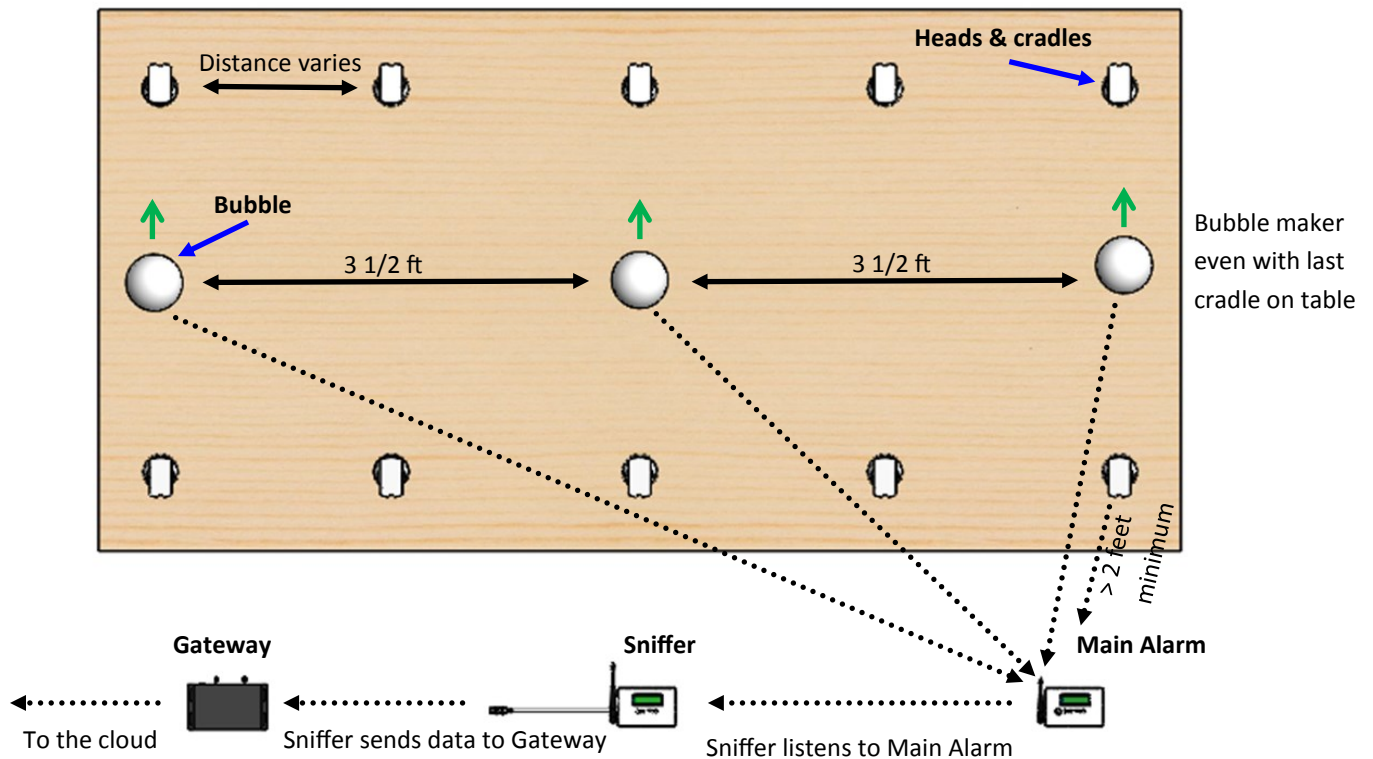
## Quick Start Instructions for Wireless Security System

### Power and alarm solution for mobile phones and tablets

(Code 120-002 Rev 3)

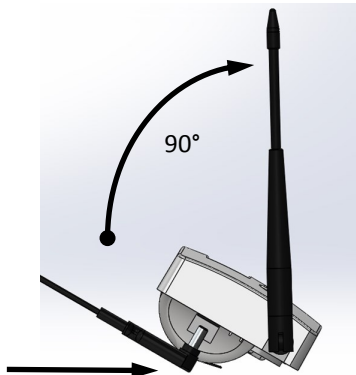


#### Example tabletop view of system setup



### Main alarm

1. Connect power cable



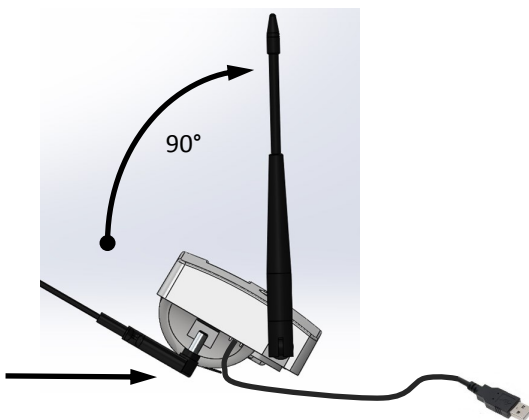
2. Turn antenna straight up 90°



3. Plug in power source

### Sniffer

1. Connect power cable



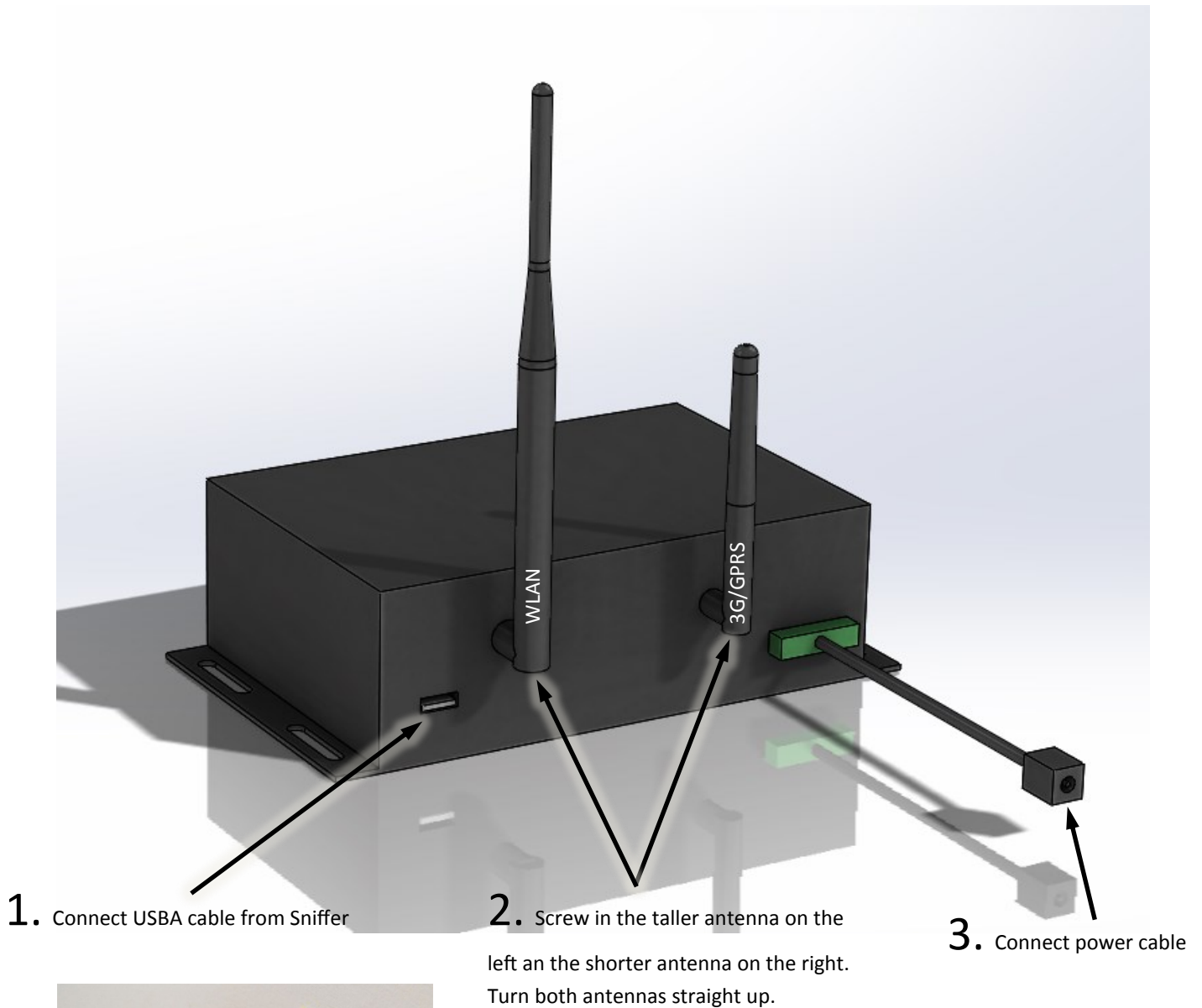
2. Turn antenna straight up 90°

3. Plug USB  
into Gateway



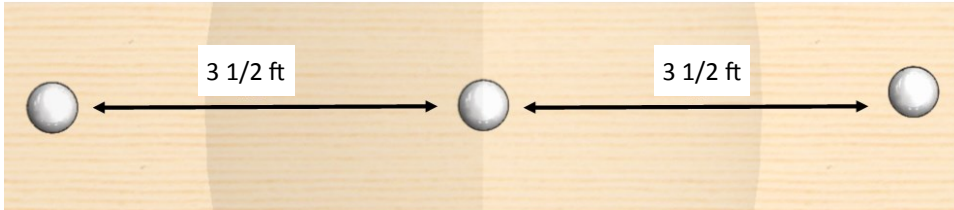
4. Plug in power source

### Cloud Gateway

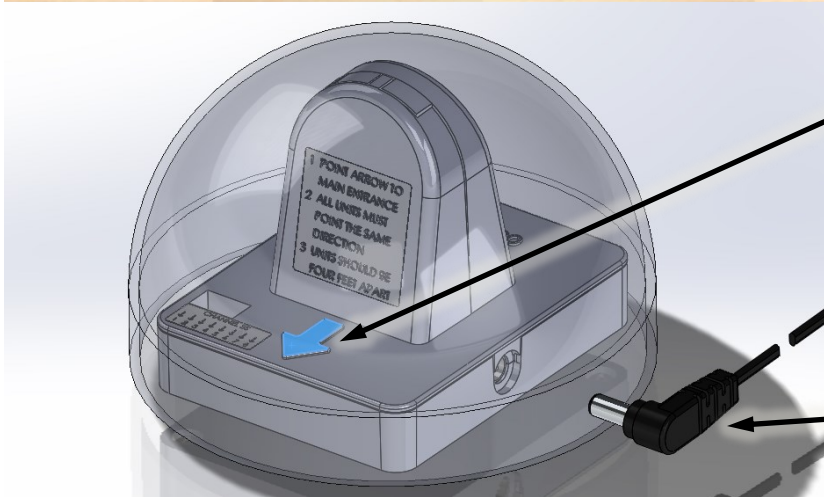


4. Plug in power source

### Bubble makers



1. Position bubble makers  
(NOTE: cannot be mounted upside down.)

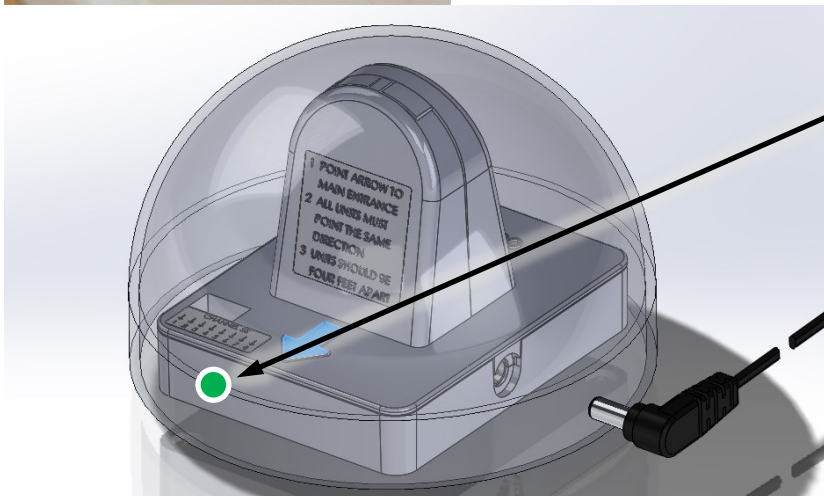


2. Point all arrows same direction

3. Connect power cable



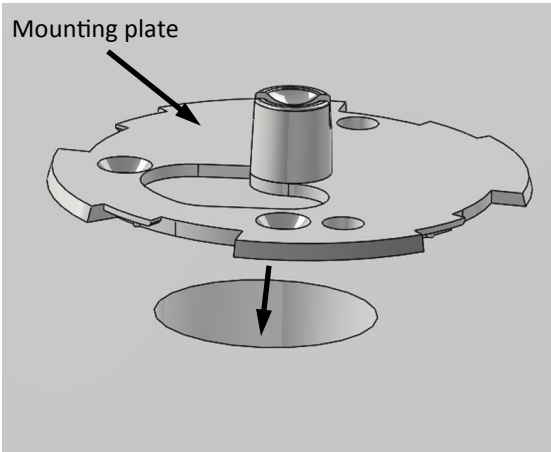
4. Plug in power source



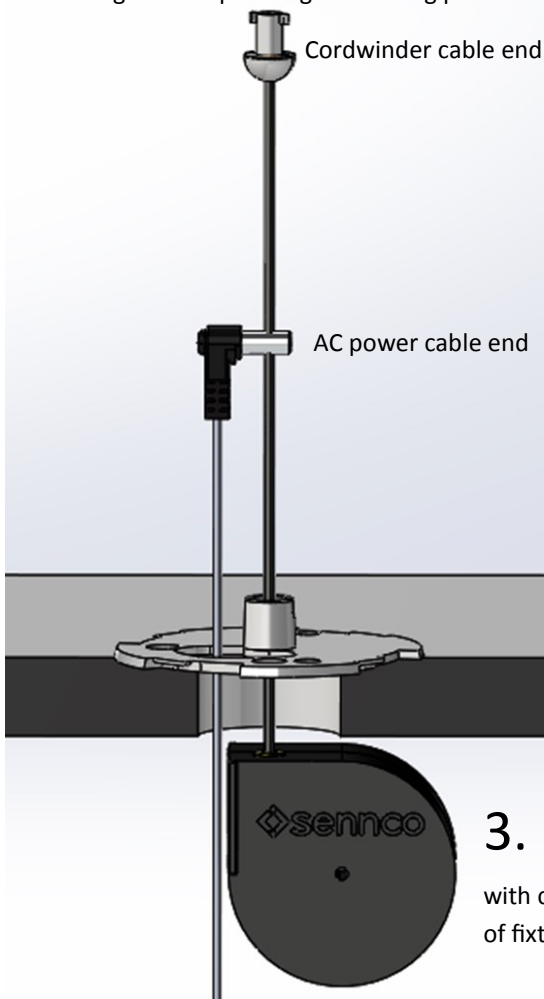
5. Check for green LED

## Cradles

1. Secure cradle mounting plate to fixture

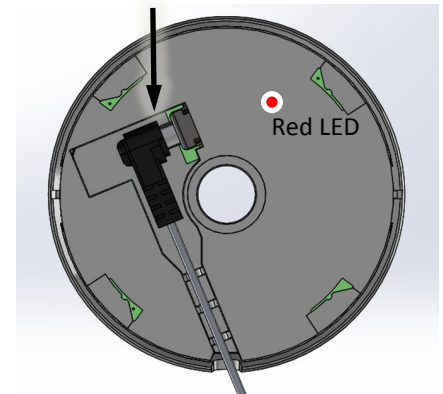


2. Bring cables up through mounting plate



3. Adhere mounting clip with cordwinder to underside of fixture

4. Connect power cable

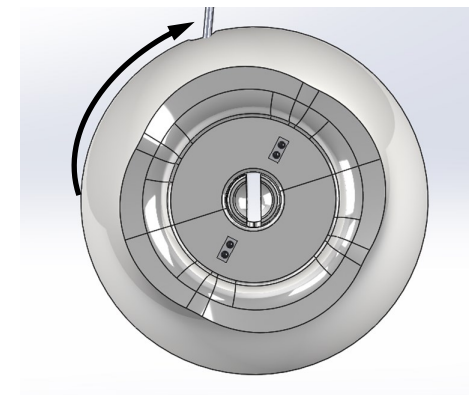


5. Plug in power source



6. Check that the red LED on the underside of the cradle is now on.

7. Place... twist... click

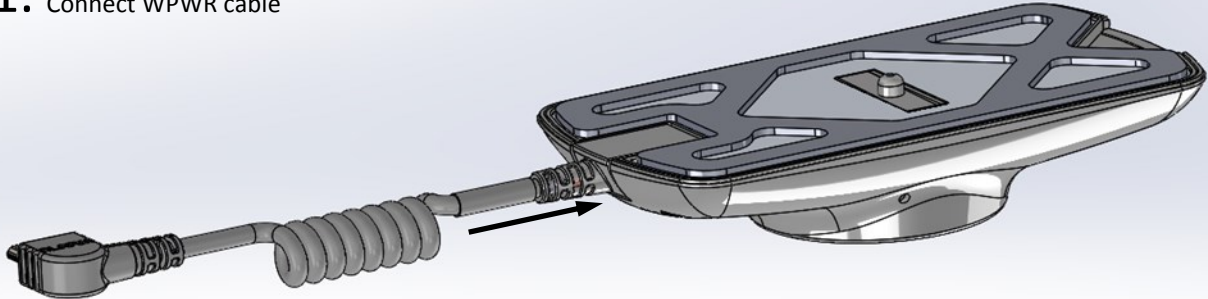




## Heads

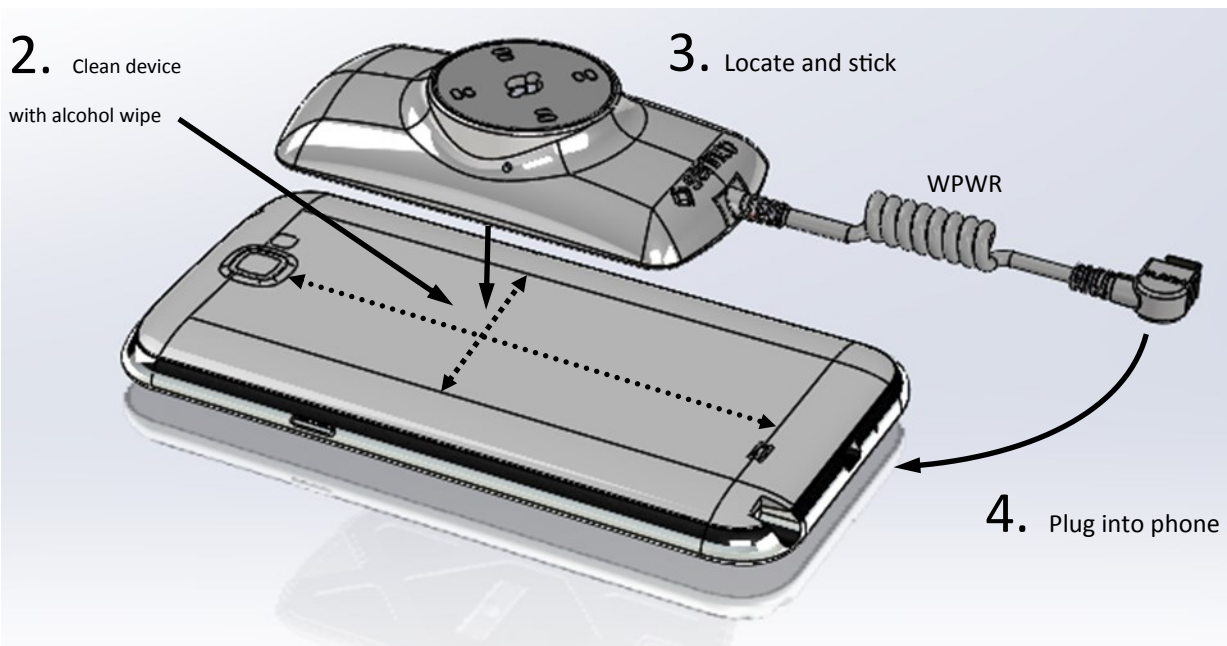
### 1. Connect WPWR cable

Shielding and adhesive applied

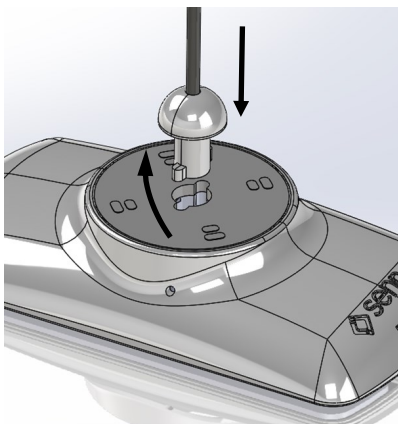


### 2. Clean device with alcohol wipe

### 3. Locate and stick



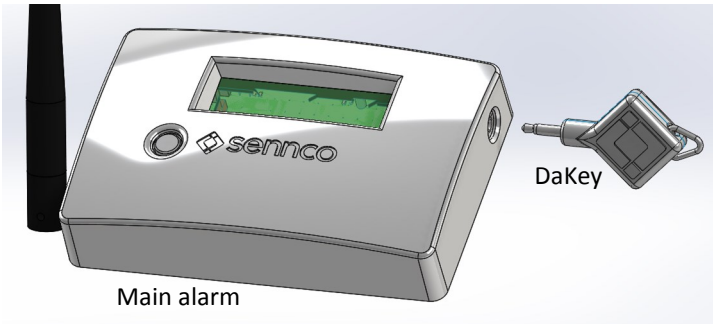
### 4. Plug into phone



### 5. Connect head to cordwinder cable end

- a) Into hole
- b) Twist
- c) "Click"
- d) Rest on cradle

### Teach keys

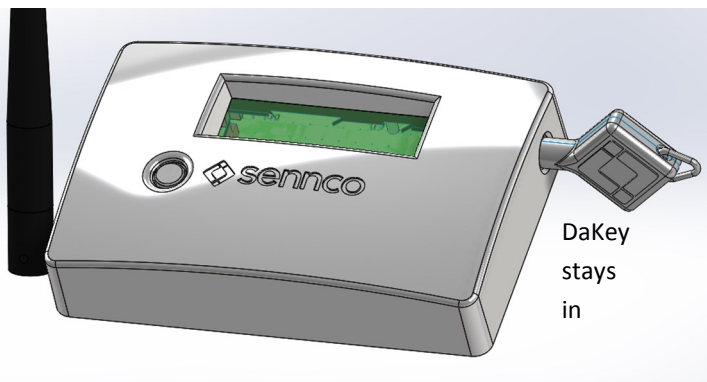


1. Gather all DaKeys
2. Insert DaKey
3. LCD reads "Key learned"
4. Remove DaKey and insert next within 5 seconds (Reinsert a "taught" DaKey again if 5 second window is missed.)
5. Repeat for up to 10 DaKeys

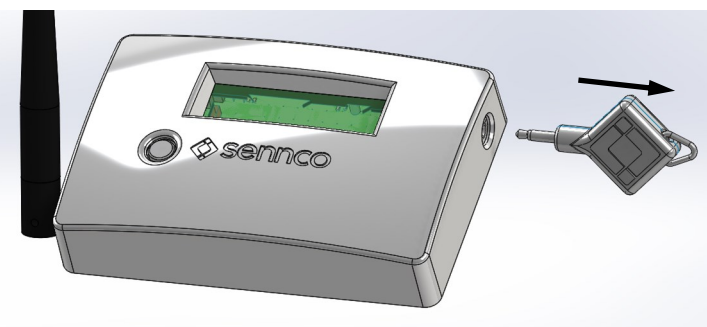
### Configure system



1. Insert a known DaKey
2. Press and hold button



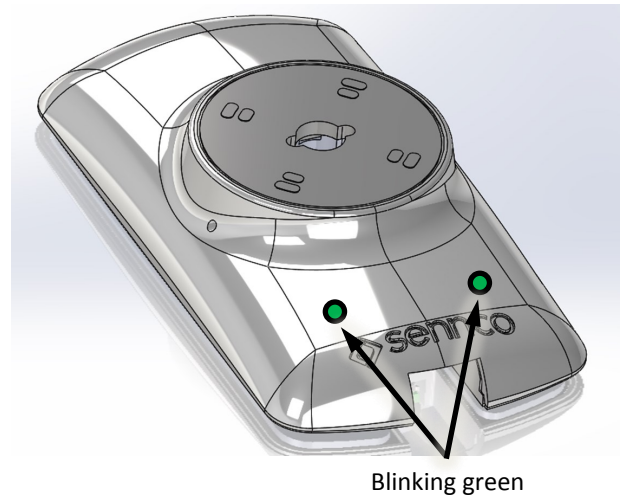
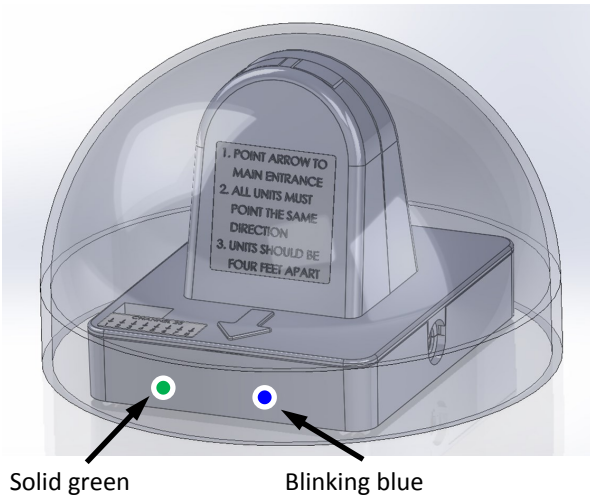
3. Release button when LCD reads "Release to configure"
4. Watch LCD  
LCD reads "Configuring devices 001" with count increasing as devices are configured.



5. Remove DaKey when prompted  
LCD reads "Configured. Devices found (quantity of devices). Remove key."
6. If the number of devices found differs from actual check all components and repeat configuration.

### Check LEDs

When powered and configured...



Refer to full Wireless Security System manual for any detailed instructions on how to use your system.

Questions? Please contact Sennco Solutions technical support at:

Toll free phone: 866-736-6261

Email: techsupport@sennco.com



### **Notifications**

#### **Patents:**

Patent No.: US 8,279,077 B1

Patent No.: US 8,558,714 B1

Sennco Solutions, Inc. is not held liable for any firmware or software changes implemented by the displayed product's manufacturer, distributor, or reseller.

Any changes/modifications to this equipment not approved by Sennco Solutions Inc. could void the user's authority to operate the equipment.

This device complies with Industry Canada license-exempt RSS standard(s). Operation is subject to the following two conditions: (1) this device may not cause interference, and (2) this device must accept any interference, including interference that may cause undesired operation of the device.

Le présent appareil est conforme aux CNR d'Industrie Canada applicables aux appareils radio exempts de licence. L'exploitation est autorisée aux deux conditions suivantes : (1) l'appareil ne doit pas produire de brouillage, et (2) l'utilisateur de l'appareil doit accepter tout brouillage radioélectrique subi, même si le brouillage est susceptible d'en compromettre le fonctionnement.

| <b><u>Component</u></b> | <b><u>Model</u></b> | <b><u>FCC ID</u></b> | <b><u>IC ID</u></b> |
|-------------------------|---------------------|----------------------|---------------------|
| Main alarm/Sniffer      | Model: 150001       | COI-150001           | 20574-150001        |
| Sensor head             | Model: 150003       | COI-150003           | 20574-150003        |
| Bubble maker            | Model: 150005       | COI-150005           | 20574-150005        |