

RadioSecure SLM Operation Manual

V1.01



ENVOTECH NETWORK SDN BHD (657306-W)

25, Jalan Kilang 2, Kawasan Perindustrian Jelapang (Taman Pertama),
30100 Jelapang, Ipoh, Perak, Malaysia.

Tel: +605 527 8287 / +605 527 9287 Fax: +605 526 1287

Email: info@envotech.com.my Website: www.envotech.com.my

Hardware Contents:

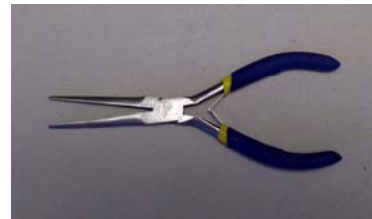


1. RadioSecure SLM Device
2. Stainless Steel wire rope with header
3. Horizontal bolt
4. Locking Barrel
5. Sim window cover

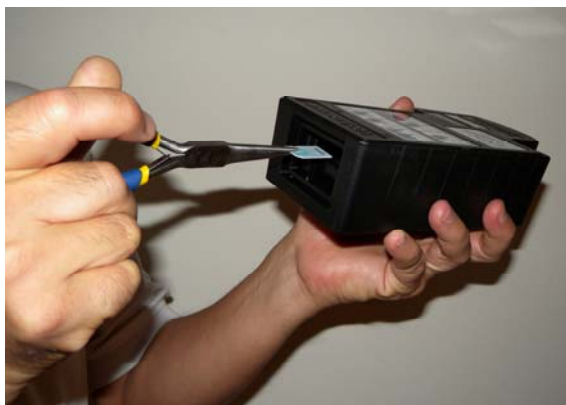
SIM Card installation

RadioSecure SLM is delivered with SIM Window Cover unattached. User is to follow the following procedure to insert SIM and subsequent closing the window to retain the IP67.

- Check that Green Reset Plug is inserted and secured.
- Use a pair of long nose plier or a pair of tweezer to grip the sim card.



- Hold the SLM at eye level and gently insert the sim card into the sim holder with the contact face down.



- Apply sufficient Silicon base adhesive such as Loctite 5607 to the groove around the SIM window.
- Align SIM window cover with arrow facing down and gently press to lock the SIM window cover.
- Leave it to cure according to manufacturer's instruction.



ENVOTECH NETWORK SDN BHD (657306-W)

25, Jalan Kilang 2, Kawasan Perindustrian Jelapang (Taman Pertama),
30100 Jelapang, Ipoh, Perak, Malaysia.

Tel: +605 527 8287 / +605 527 9287 Fax: +605 526 1287

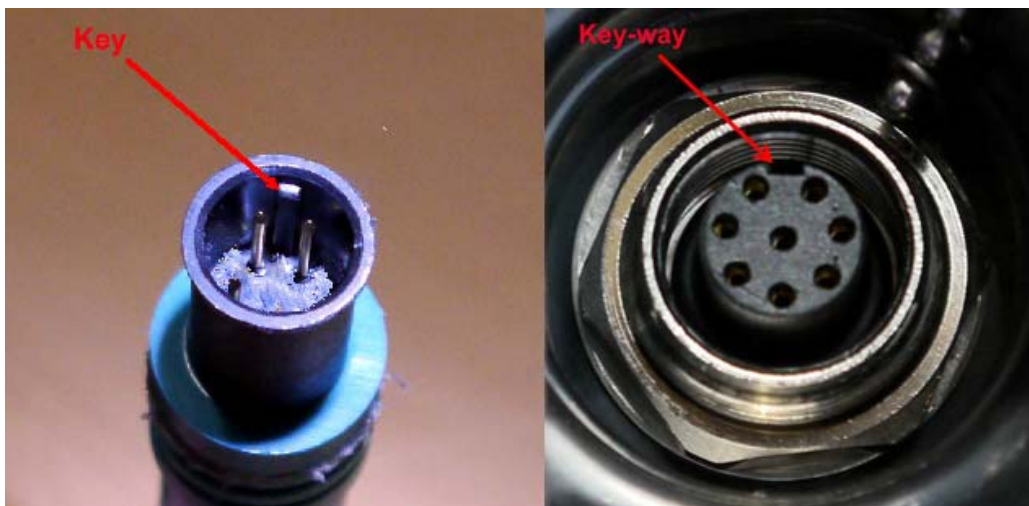
Email: info@envotech.com.my Website: www.envotech.com.my

Charging the RadioSecure SLM

RadioSecure SLM is delivered with the battery charged to approximately 25%. Before deploying the RadioSecure SLM, make a full charge of the battery with an appropriate charger. (3hrs with 4amp rapid charger).

To charge the battery,

- slide the interface connector sliding window to the left.
- unscrew green reset plug.
- Align charger receptacle to connector by aligning the key to the key-way and gently push down to mate.
- Switch on charger and leave it to charge for the required period. When fully charged, the charger indicator will turn green



ENVOTECH NETWORK SDN BHD (657306-W)

25, Jalan Kilang 2, Kawasan Perindustrian Jelapang (Taman Pertama),
30100 Jelapang, Ipoh, Perak, Malaysia.

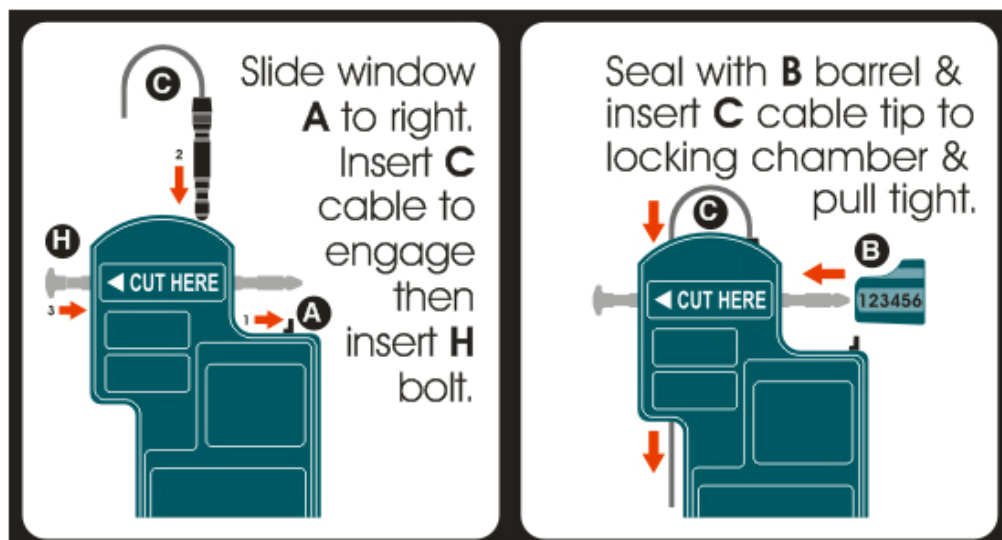
Tel: +605 527 8287 / +605 527 9287 Fax: +605 526 1287

Email: info@envotech.com.my Website: www.envotech.com.my

Preparing RadioSecure SLM for deployment:

RadioSecure SLM with fully charged battery is stored with reset plug inserted and securely tightens. The reset plug disconnects power supply to the CCA. The following procedure and visual observations should be observed in deploying the RadioSecure SLM.

1. Slide the interface connector window to left, unscrew green reset plug.
2. Red LED start blinking for approximately 45s (system initialization).
3. Red LED latched (system completed initialization).
4. Red and Green LED latched (GSM initialization).
5. Red LED latched, Green LED blink (GSM primary login).
6. Green LED latched (RadioSecure SLM ready for commissioning).
7. Insert header end of the stainless steel wire rope into the larger hole on the top of RadioSecure SLM.
8. Insert Horizontal Bolt and lock it with locking barrel.
9. Pass stainless steel wire rope through the hasp of object to be sealed and insert the taper end of the cable through the smaller hole.



10. Pull to seal tight.

ENVOTECH NETWORK SDN BHD (657306-W)

25, Jalan Kilang 2, Kawasan Perindustrian Jelapang (Taman Pertama),
30100 Jelapang, Ipoh, Perak, Malaysia.

Tel: +605 527 8287 / +605 527 9287 Fax: +605 526 1287

Email: info@envotech.com.my Website: www.envotech.com.my

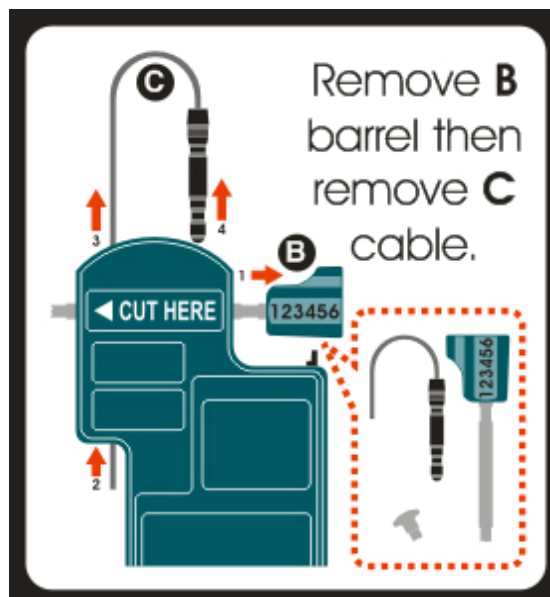
Unseal and Decommission the RadioSecure SLM

To end journey, the following procedure and observation should be observed.

1. pull the horizontal bolt to left.
2. use a sharp bolt cutter to cut the bolt at the recess area.



3. grip the locking barrel and pull out the remaining portion of the horizontal bolt.
4. pull the stainless steel wire rope out from the smaller hole (left).
5. un thread the stainless steel wire rope from the hasp.
6. pull out the remaining end (with the header) to access the interface connector.



ENVOTECH NETWORK SDN BHD (657306-W)

25, Jalan Kilang 2, Kawasan Perindustrian Jelapang (Taman Pertama),
30100 Jelapang, Ipoh, Perak, Malaysia.

Tel: +605 527 8287 / +605 527 9287 Fax: +605 526 1287

Email: info@envotech.com.my Website: www.envotech.com.my

7. align green reset plug to the interface connector and gently pressed while turning clockwise.
8. the RadioSecure SLM has successfully completed an assignment and is in deep sleep.



ENVOTECH NETWORK SDN BHD (657306-W)

25, Jalan Kilang 2, Kawasan Perindustrian Jelapang (Taman Pertama),
30100 Jelapang, Ipoh, Perak, Malaysia.

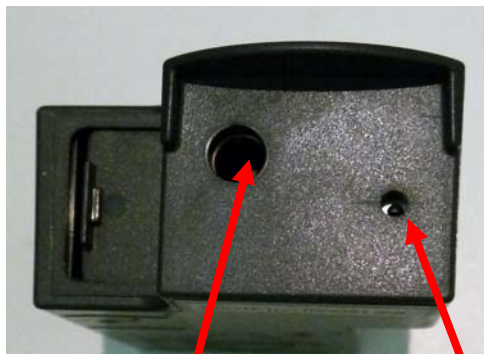
Tel: +605 527 8287 / +605 527 9287 Fax: +605 526 1287

Email: info@envotech.com.my Website: www.envotech.com.my

Maintaining the SLM

RadioSecure SLM has a delicate Floating Mechanism which requires maintenance. Maintenance schedule shall depend on usage environment. It is advisable to carry out monthly maintenance for normal usage. Usage in dusty environment may require more frequent maintenance.

1. Dust off any visible sludge or dust accumulated in or around the cable-header insertion hole, cable end insertion hole and the horizontal bolt insertion hole.
2. Spray light lubricant into these three holes.
3. Hold SLM with drain hole facing downward and in an angle where excess lubricant can be drained.

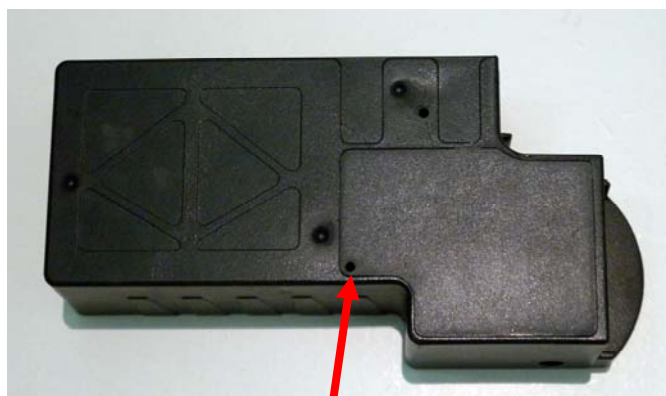


Cable header insertion hole



Horizontal bolt insertion hole

Cable end insertion hole



Drain Hole

ENVOTECH NETWORK SDN BHD (657306-W)

25, Jalan Kilang 2, Kawasan Perindustrian Jelapang (Taman Pertama),
30100 Jelapang, Ipoh, Perak, Malaysia.

Tel: +605 527 8287 / +605 527 9287 Fax: +605 526 1287

Email: info@envotech.com.my Website: www.envotech.com.my

4. In the event that force is applied to pull the cable out of the locking mechanism without removing the H-bolt, the locking cam will “bite” the cable resulting cable unable to be removed. To release the bite, push/pull cable downward, pull out H-bolt and then the cable. Spray lubricant into the cable inserting hole to remove metal filings.

ENVOTECH NETWORK SDN BHD (657306-W)

25, Jalan Kilang 2, Kawasan Perindustrian Jelapang (Taman Pertama),
30100 Jelapang, Ipoh, Perak, Malaysia.

Tel: +605 527 8287 / +605 527 9287 Fax: +605 526 1287

Email: info@envotech.com.my Website: www.envotech.com.my

FCC WARNING

This device complies with Part 15 of the FCC Rules. Operation is subject to the following two conditions:

- (1) This device may not cause harmful interference, and
- (2) this device must accept any interference received, including interference that may cause undesired operation.

This device must be installed to provide a separation distance of at least 20 cm from all persons and must not be collocated or operating in conjunction with any other antenna or transmitter.

NOTE 1: Any changes or modifications to this unit not expressly approved by the party responsible for compliance could void the user's authority to operate the equipment.