

Appendix II

Internal Photographs

For

Camera

MODEL: SPTM1



SPTM1 (Version S) front plate removed



SPTM1 (Version W) front plate removed



SPTM1 (Version S) heat sink removed



SPTM1 (Version W) heat sink removed



SPTM1(Version S) FPC removed



SPTM1(Version W) FPC removed



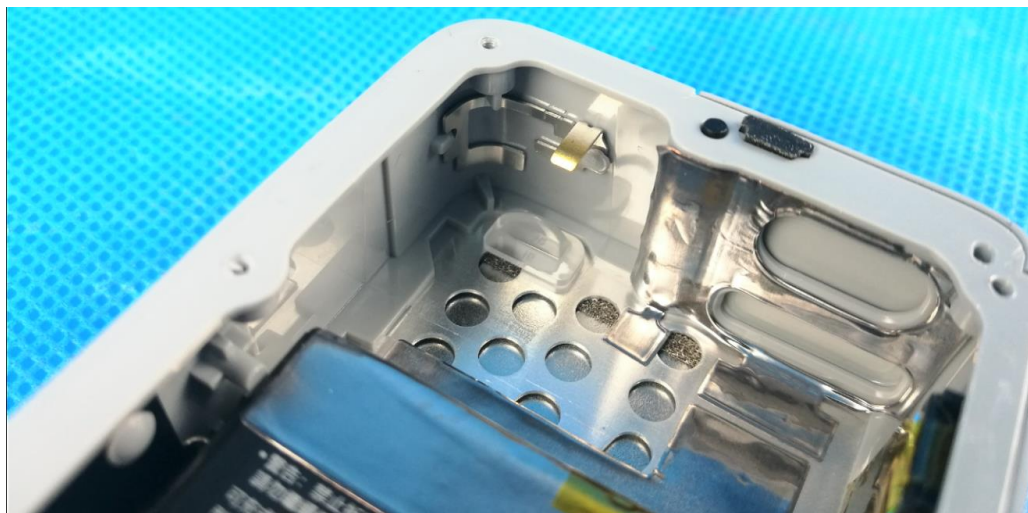
SPTM1(Version S) SD card module removed



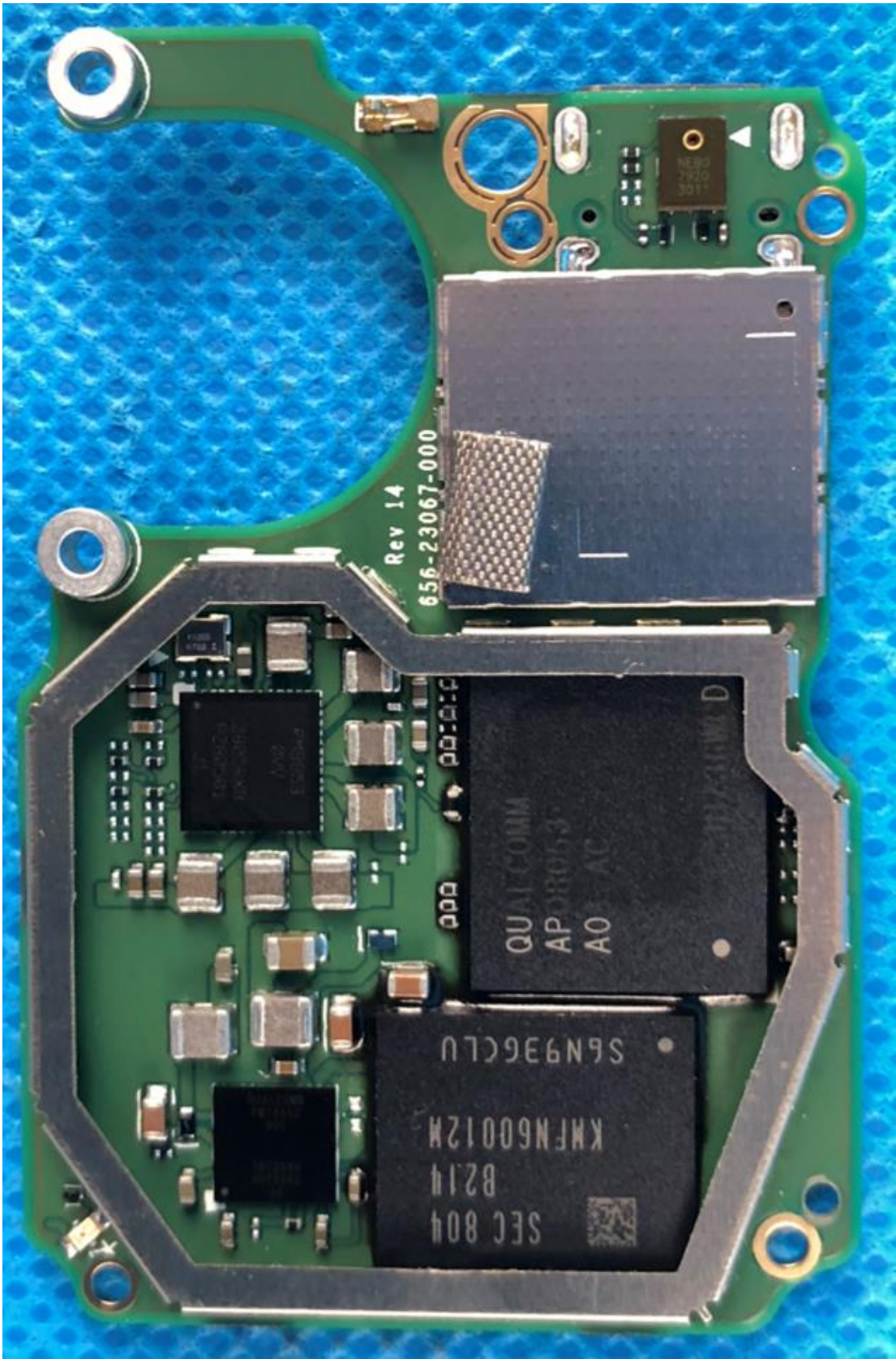
SPTM1(Version W) SD card module removed



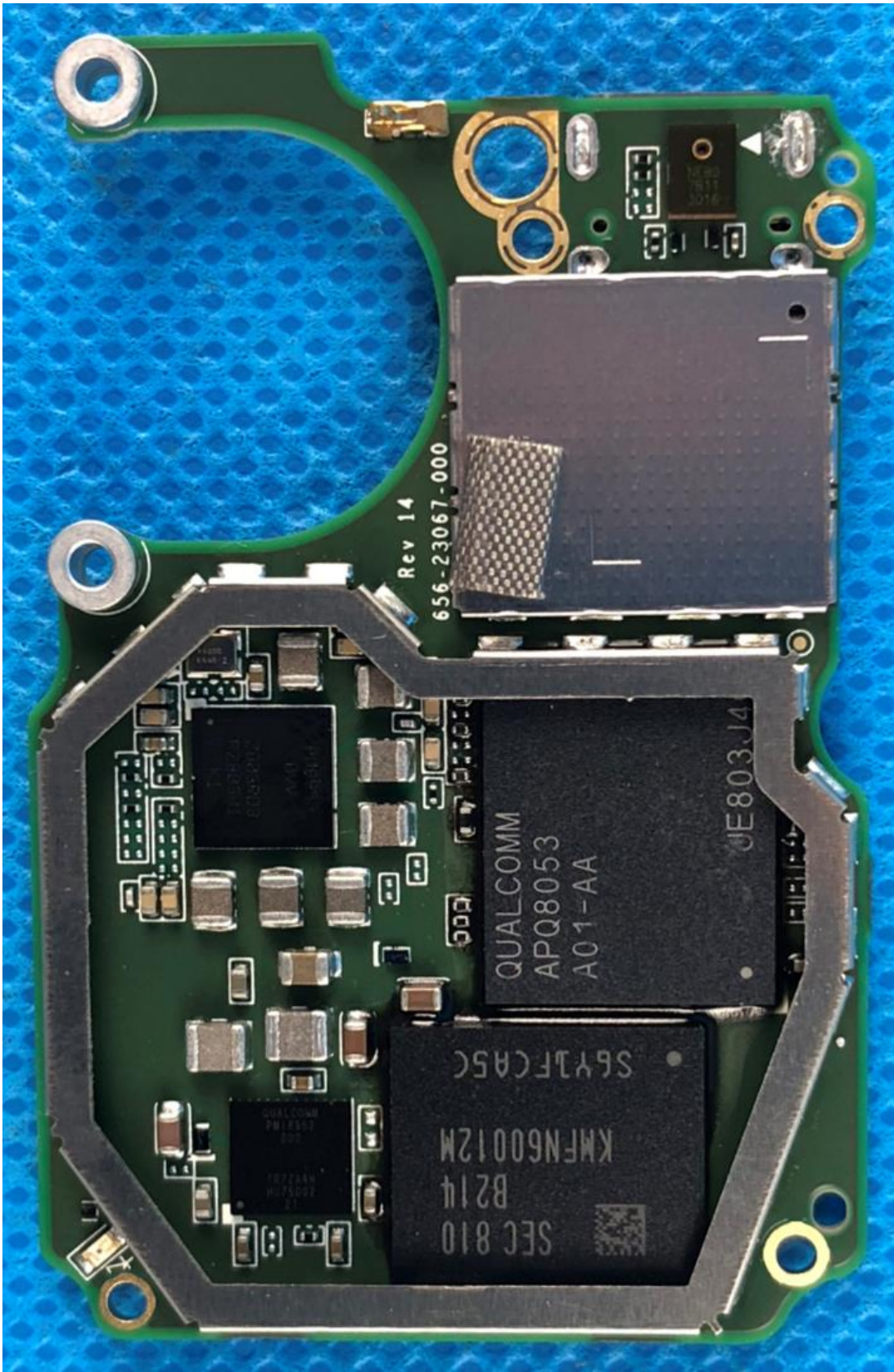
SPTM1 (Version S) antenna location



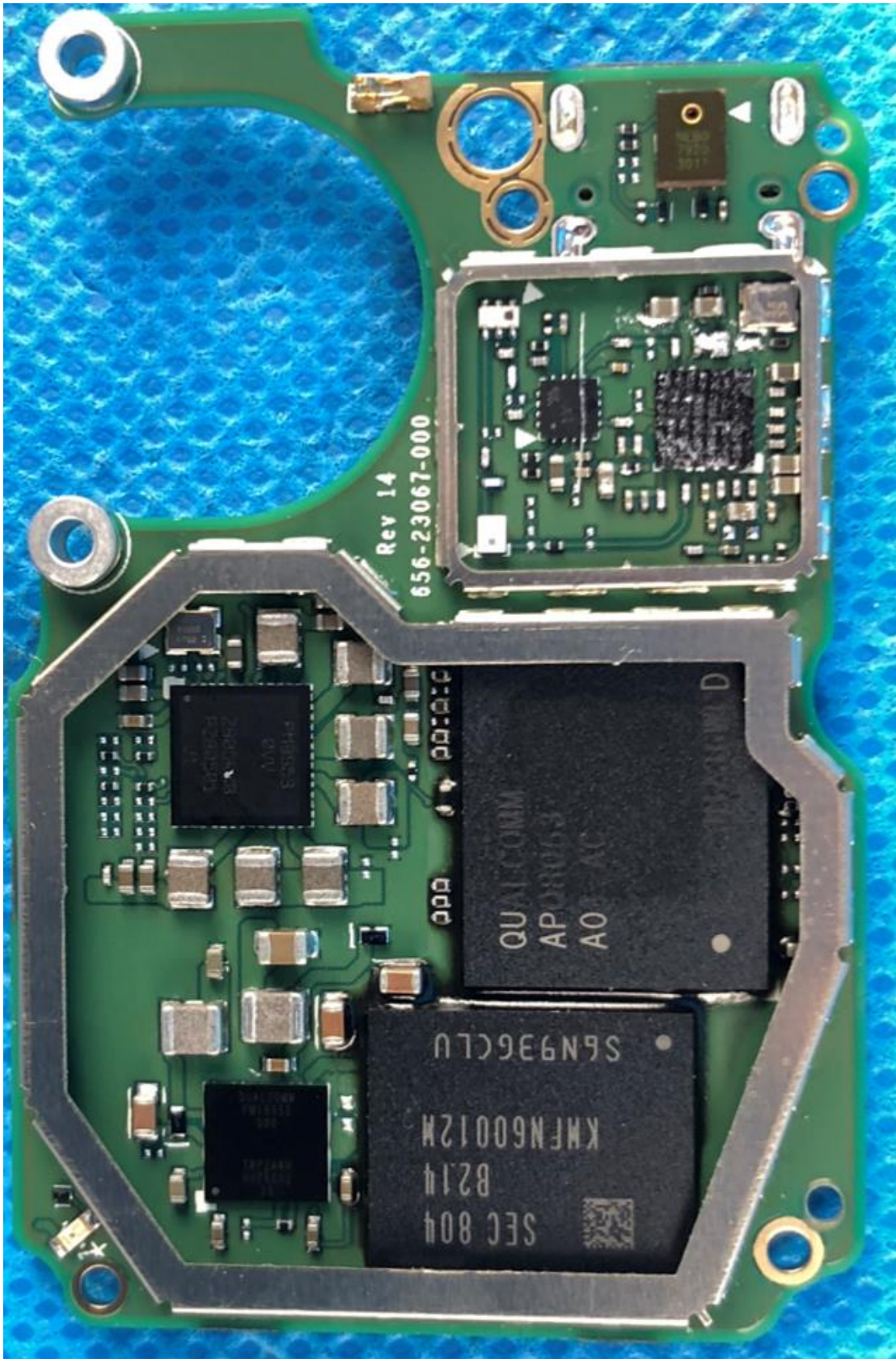
SPTM1 (Version W) antenna location



656-23067-000 PCBA, MAIN- SPTM1(Version S) -Front with shield



656-23067-000 PCBA, MAIN- SPTM1(Versoin W)- Front with shield



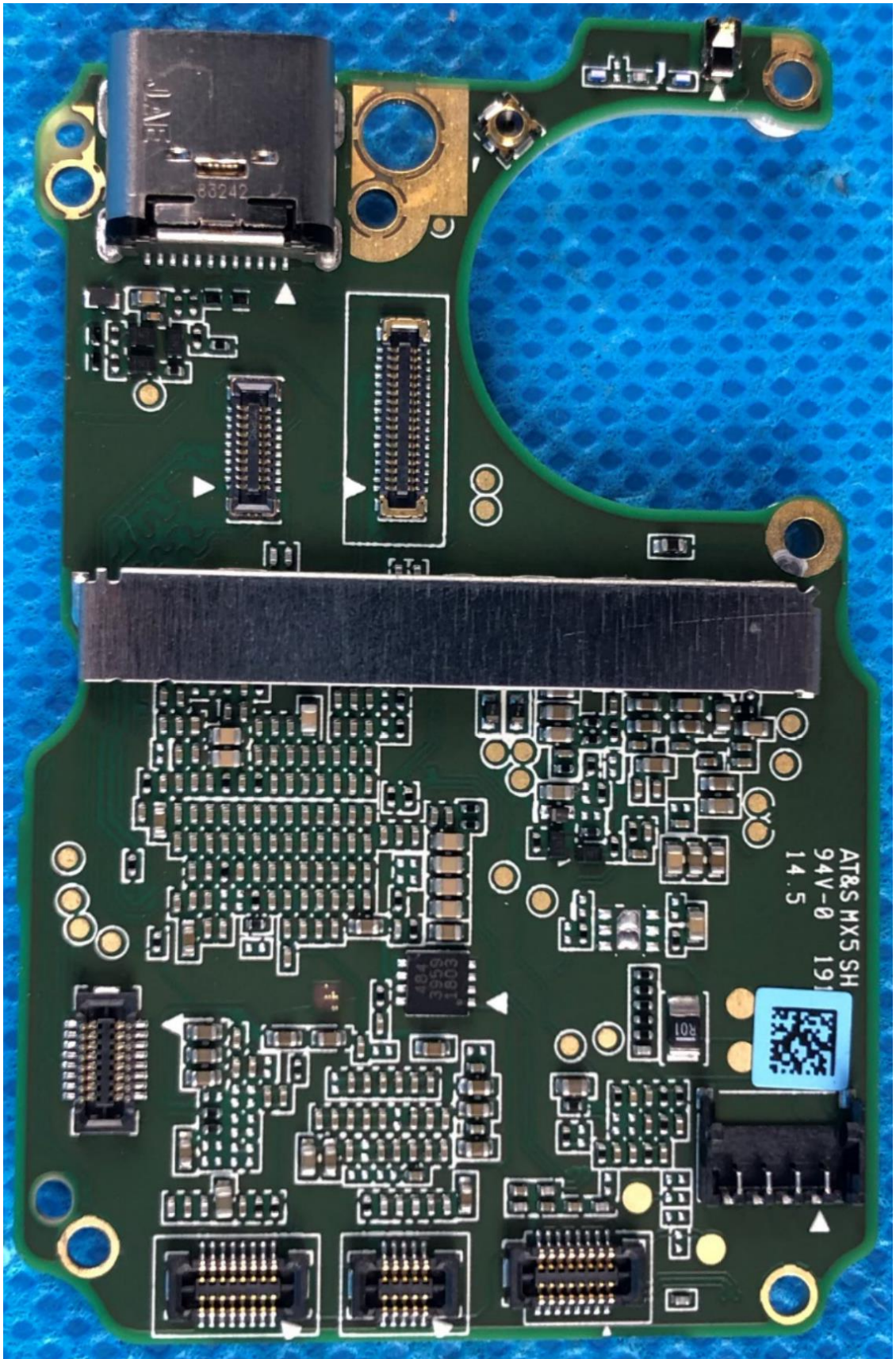
656-23067-000 PCBA, MAIN- SPTM1(Version S) -Front with shield removed



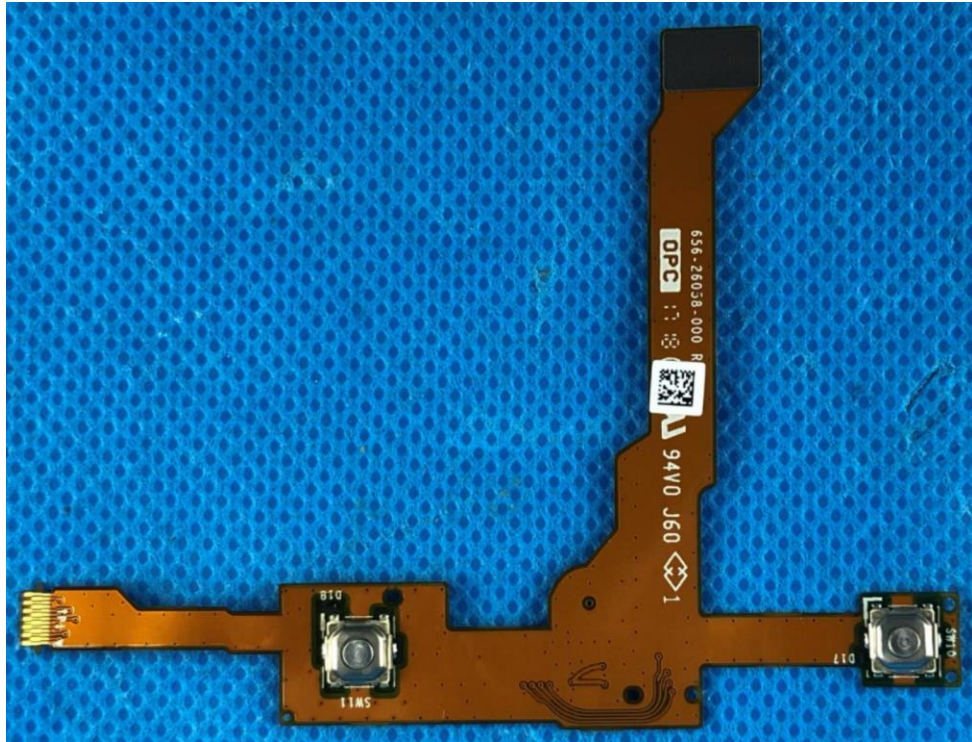
656-23067-000 PCBA, MAIN- SPTM1(Version W)- Front with shield removed



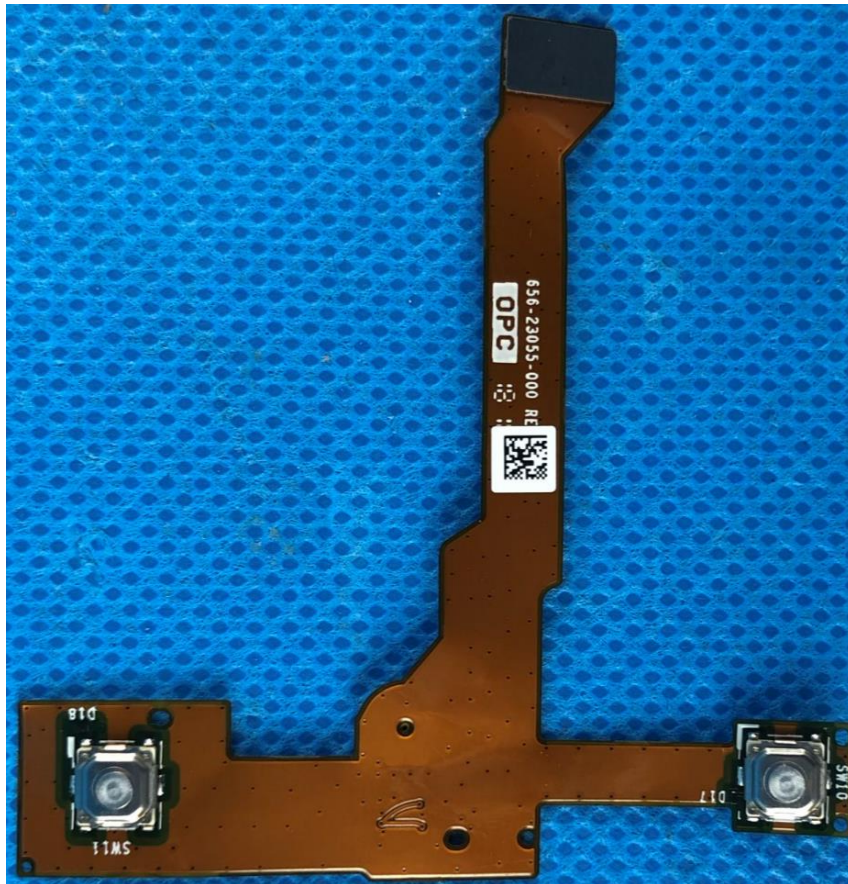
656-23067-000 PCBA, MAIN- SPTM1(Version S) -Back



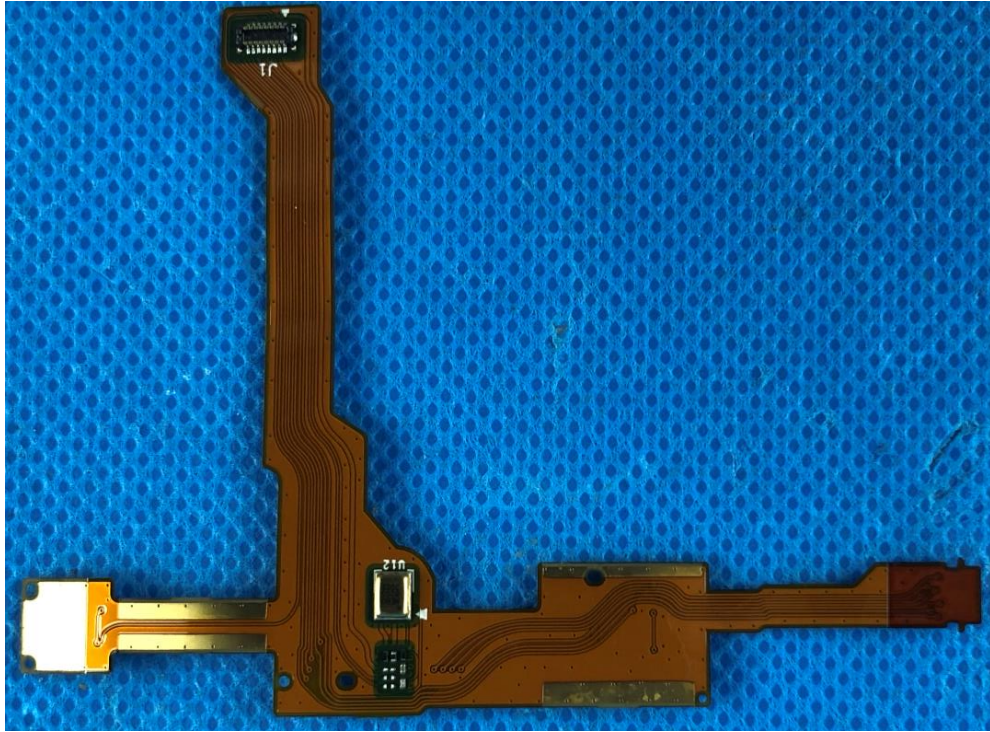
656-23067-000 PCBA, MAIN- SPTM1(Version W) -Back



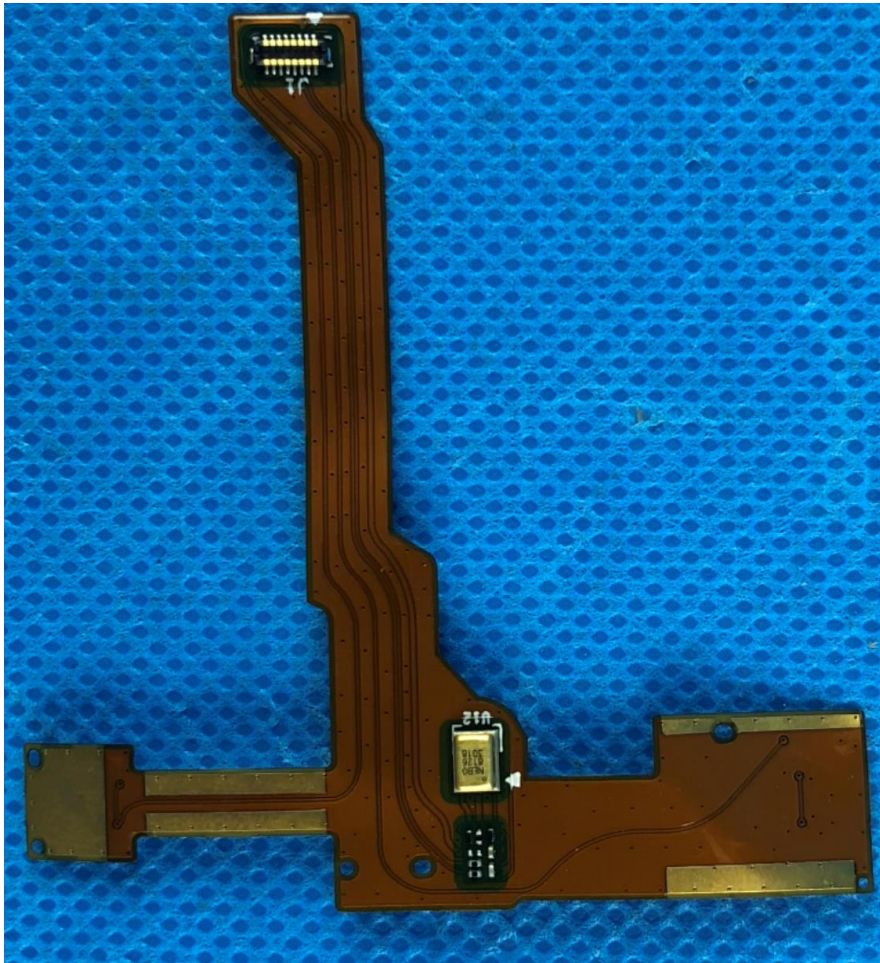
656-26058-000 FPC, MIC+BUTTON FLEX- SPTM1(Version S) -Front



656-23055-000 FPC, MIC+BUTTON FLEX- SPTM1(Version W) -Front



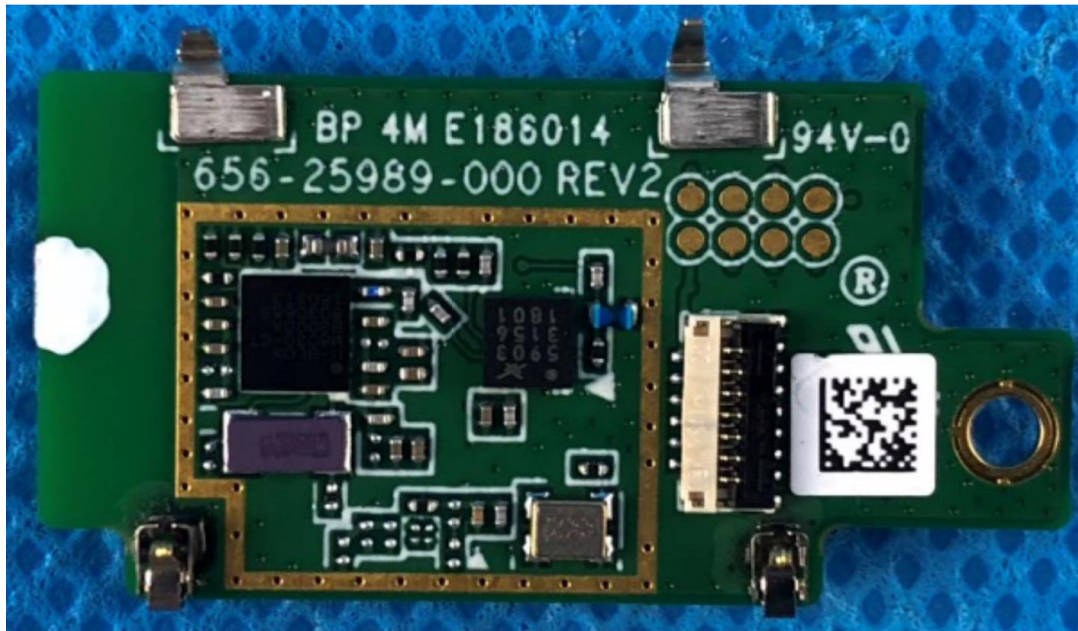
656-26058-000 FPC, MIC+BUTTON FLEX- SPTM1 (Version S) -Back



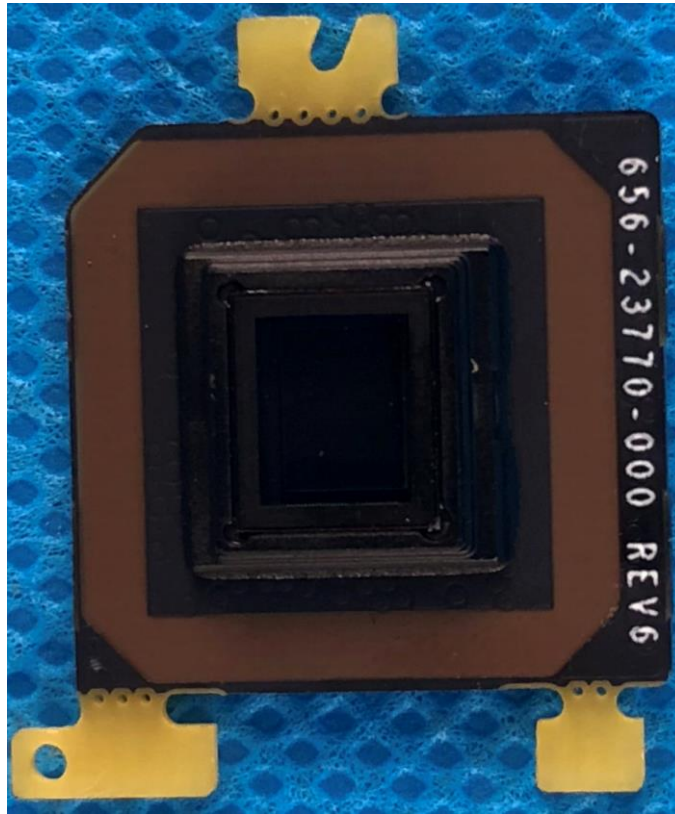
656-23055-000 FPC, MIC+BUTTON FLEX- SPTM1 (Version W) -Back



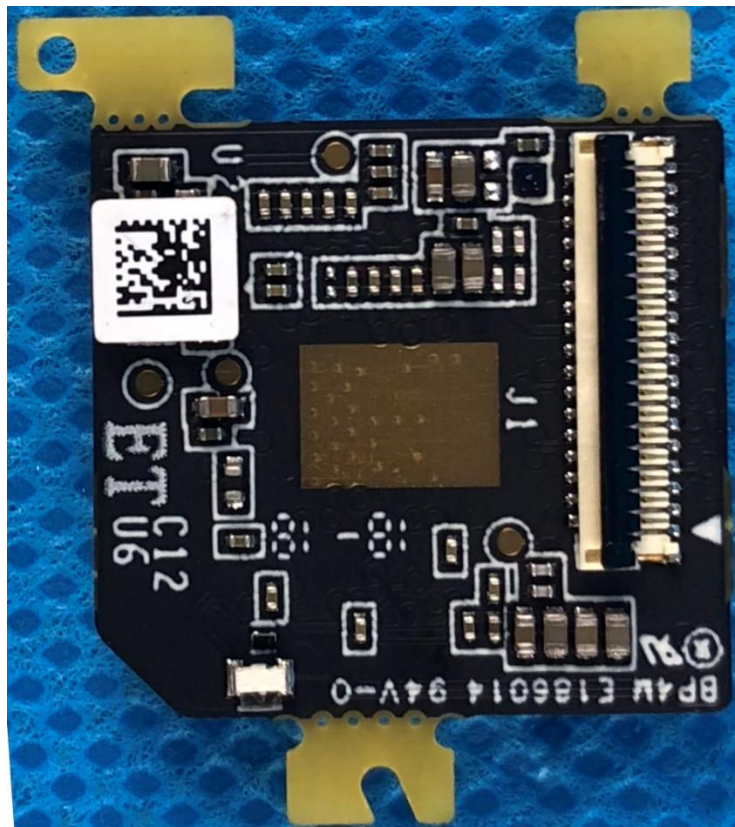
656-25989-000 PCB, GPS- SPTM1(Version S) -Front



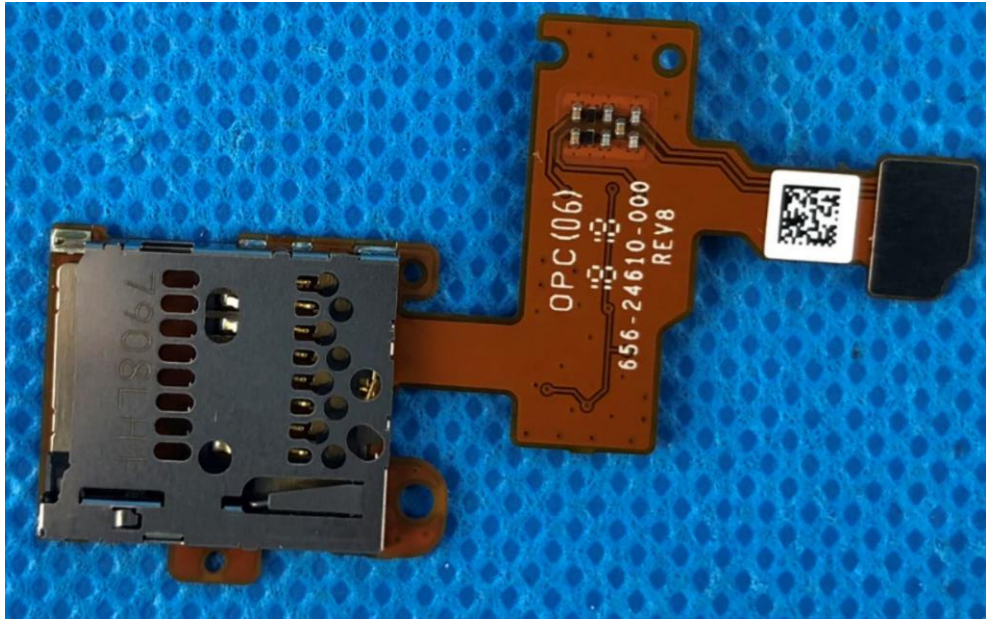
656-25989-000 PCB, GPS- SPTM1(Version S) -Back



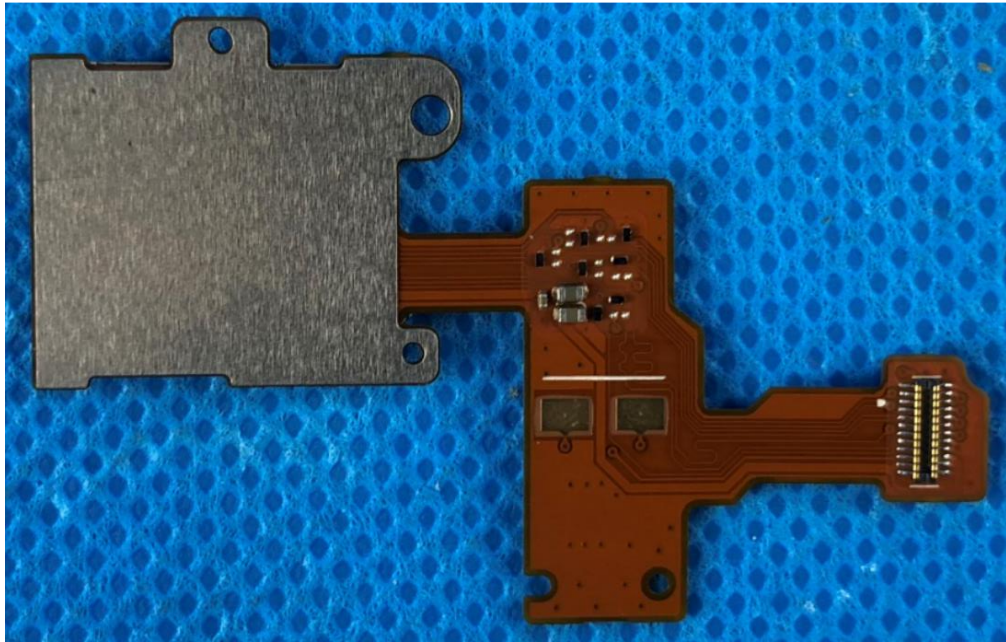
656-23770-000 PCB, SENSOR BOARD- SPTM1(Version S and Version W) -Front



656-23770-000 PCB, SENSOR BOARD- SPTM1(Version S and Version W) -Back



656-24610-000 FPC, SPEAKER- SPTM1(Version S and Version W) -Front



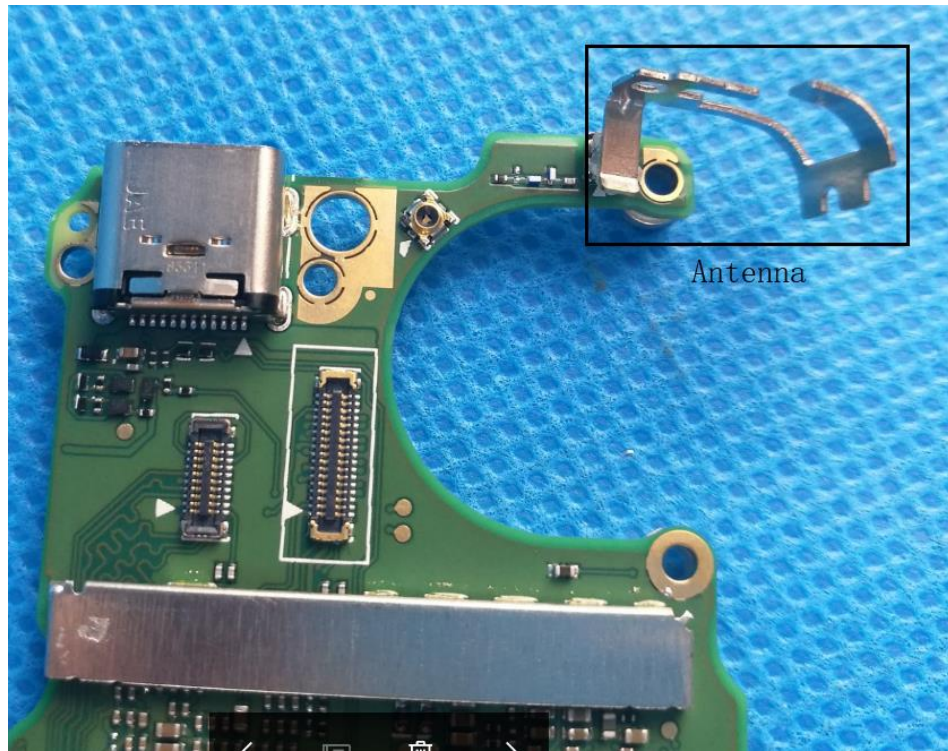
656-24610-000 FPC, SPEAKER- SPTM1(Version S and Version W) -Back



656-22984-000 FPC, JUMPER, IMAGE SENSOR- SPTM1(Version S and Version W) -Front



656-22984-000 FPC, JUMPER, IMAGE SENSOR- SPTM1(Version S and Version W) -Back



425-23449-000 ANTENNA, BT/WIFI- SPTM1(Version S and Version W)



SPTM1B, lithium battery- SPTM1(Version S and Version W) -Front



SPTM1B, lithium battery- SPTM1(Version S and Version W) -Back