

# Appendix II

## Internal Photographs

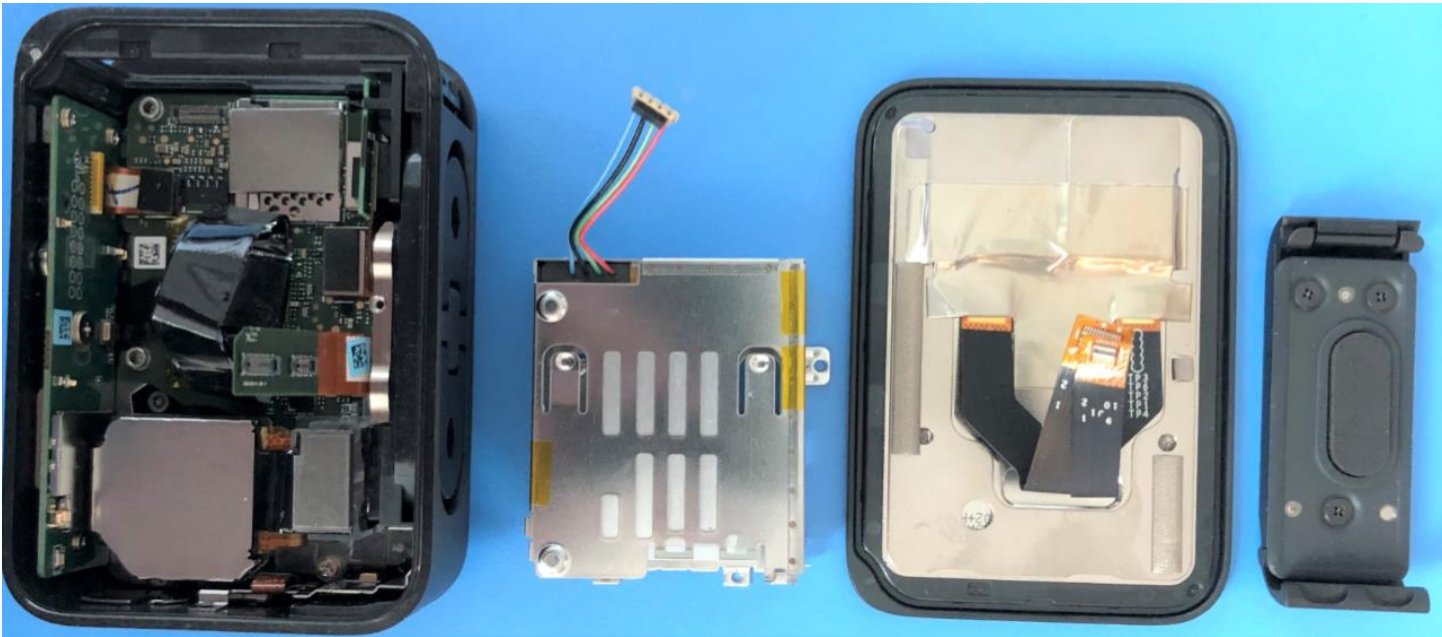
**For**

**Camera**

**MODEL: SPBL1**

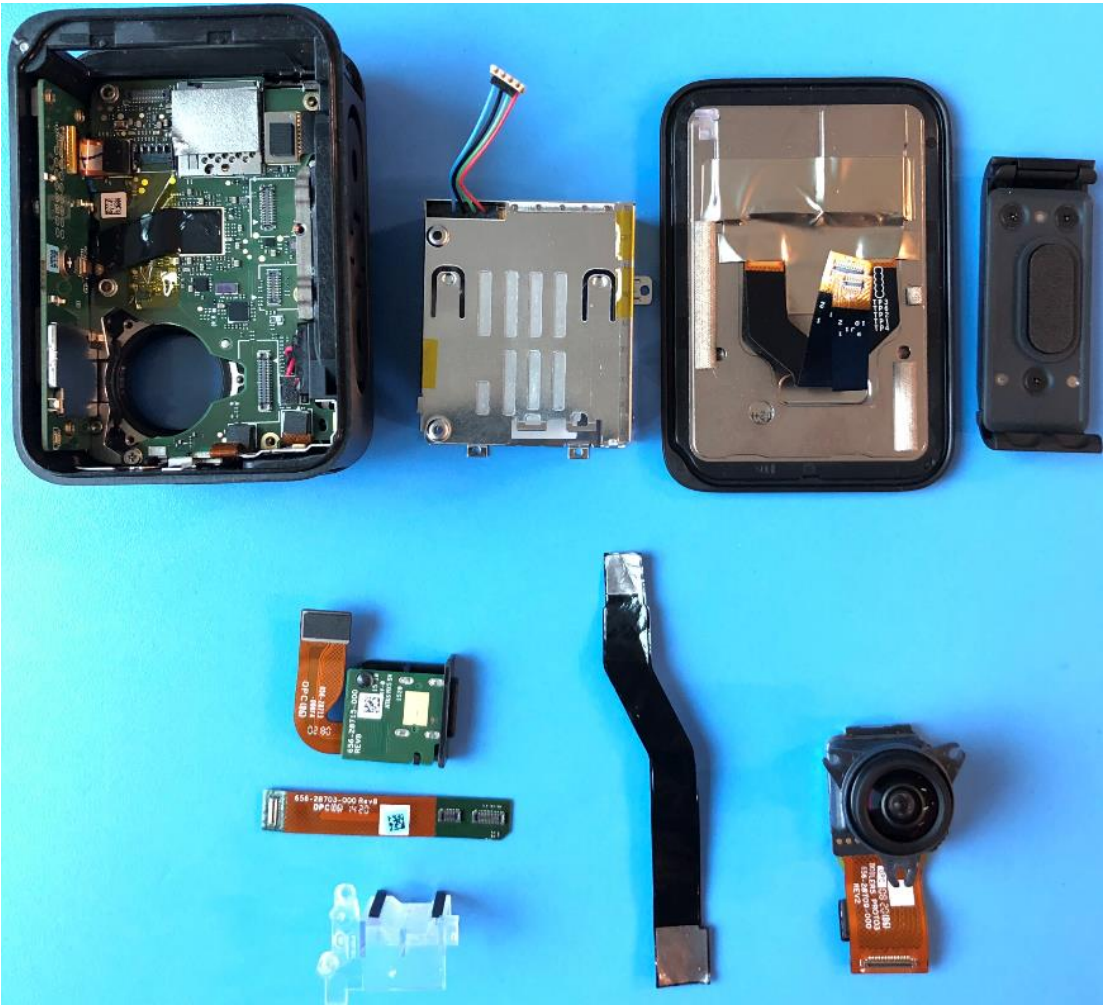
*This Report is the property of GoPro, Inc.  
No content may be copied, distributed,  
published, or used in any way, in whole or in  
part, without the express written  
permission of GoPro, Inc.*





Rear plate/rear LCD, battery counterpart, and battery door removed, SPBL1

NOTICE:  
 This Report is the property of GoPro, Inc.  
 No content may be copied, distributed,  
 published, or used in any way, in whole or in  
 part, without the express written  
 permission of GoPro, Inc.

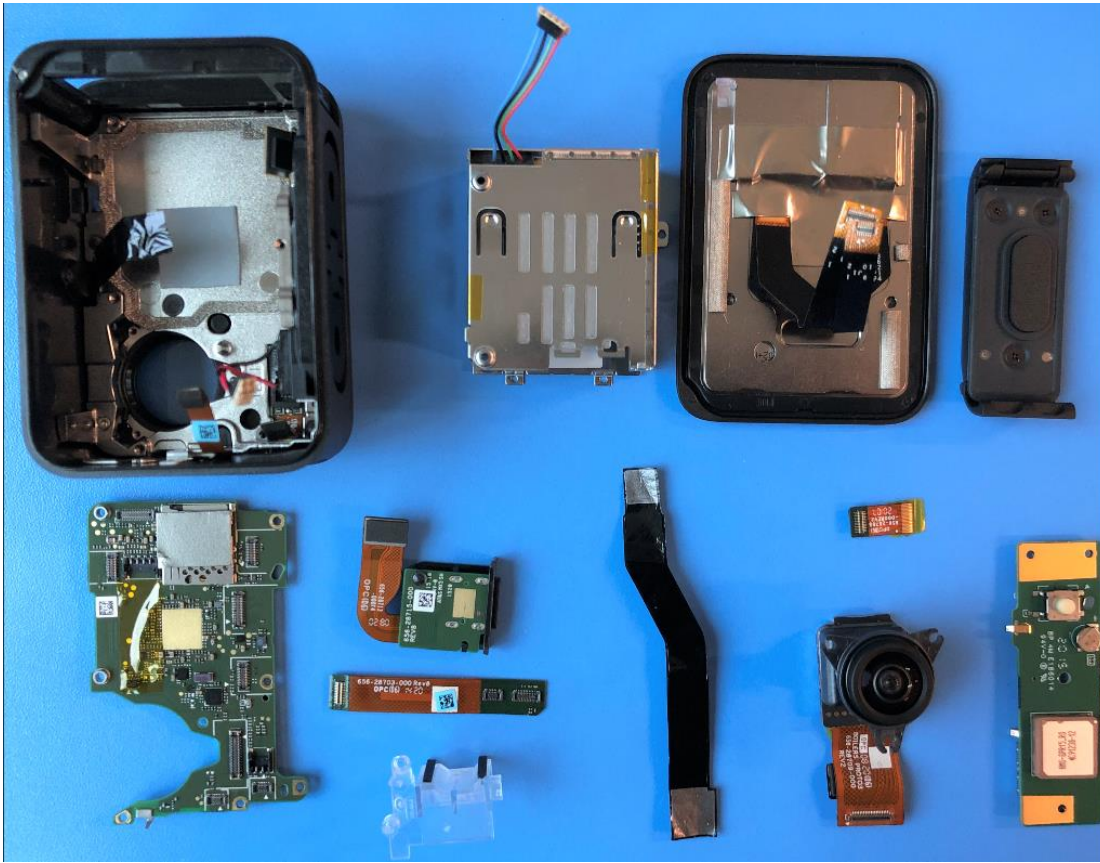


Rear plate/rear LCD, battery counterpart, battery door, Lens module, USB board and FPC removed, SPBL1

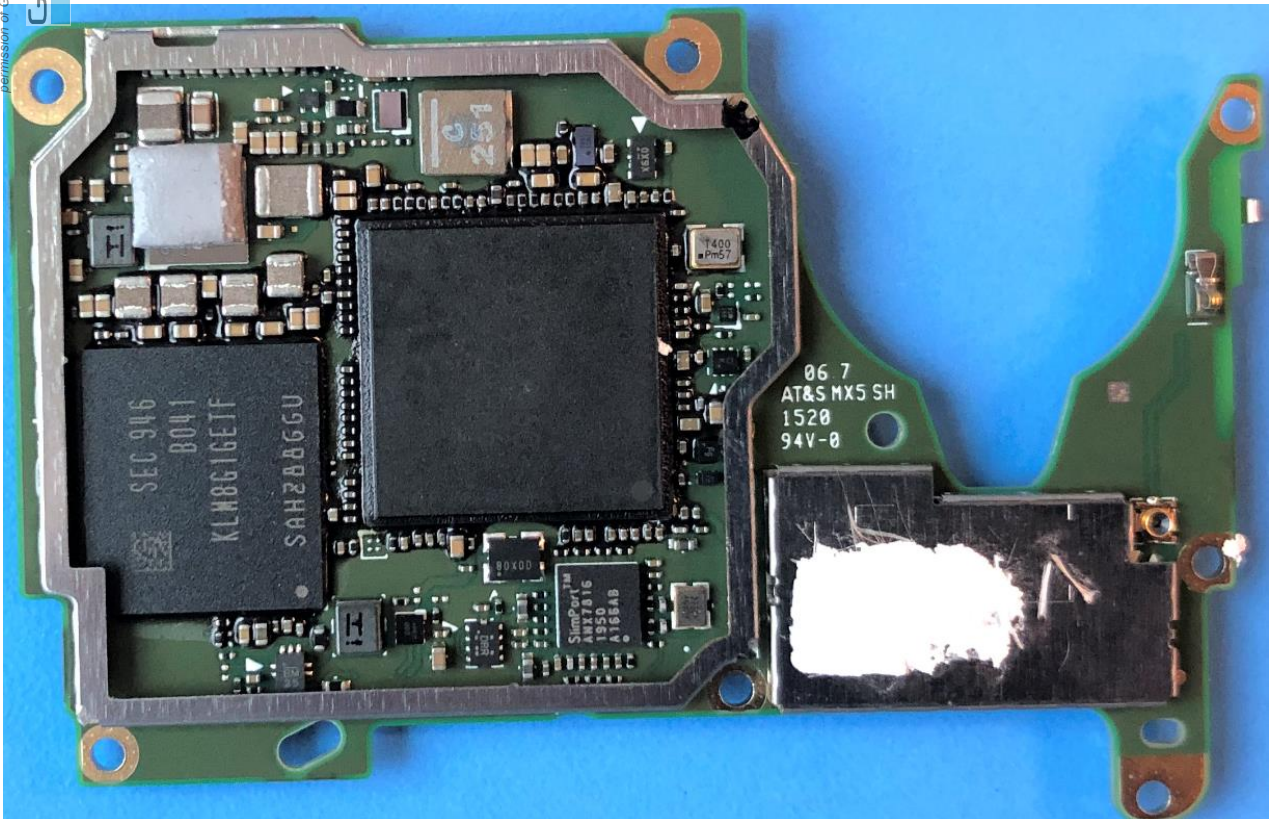


NOTICE:

This Report is the property of GoPro, Inc. No content may be copied, distributed, published, or used in any way, in whole or in part, without the express written permission of GoPro, Inc.



Rear plate/rear LCD, battery counterpart, battery door, Lens, USB board, FPC, Main board, speaker and GPS board removed, SPBL1

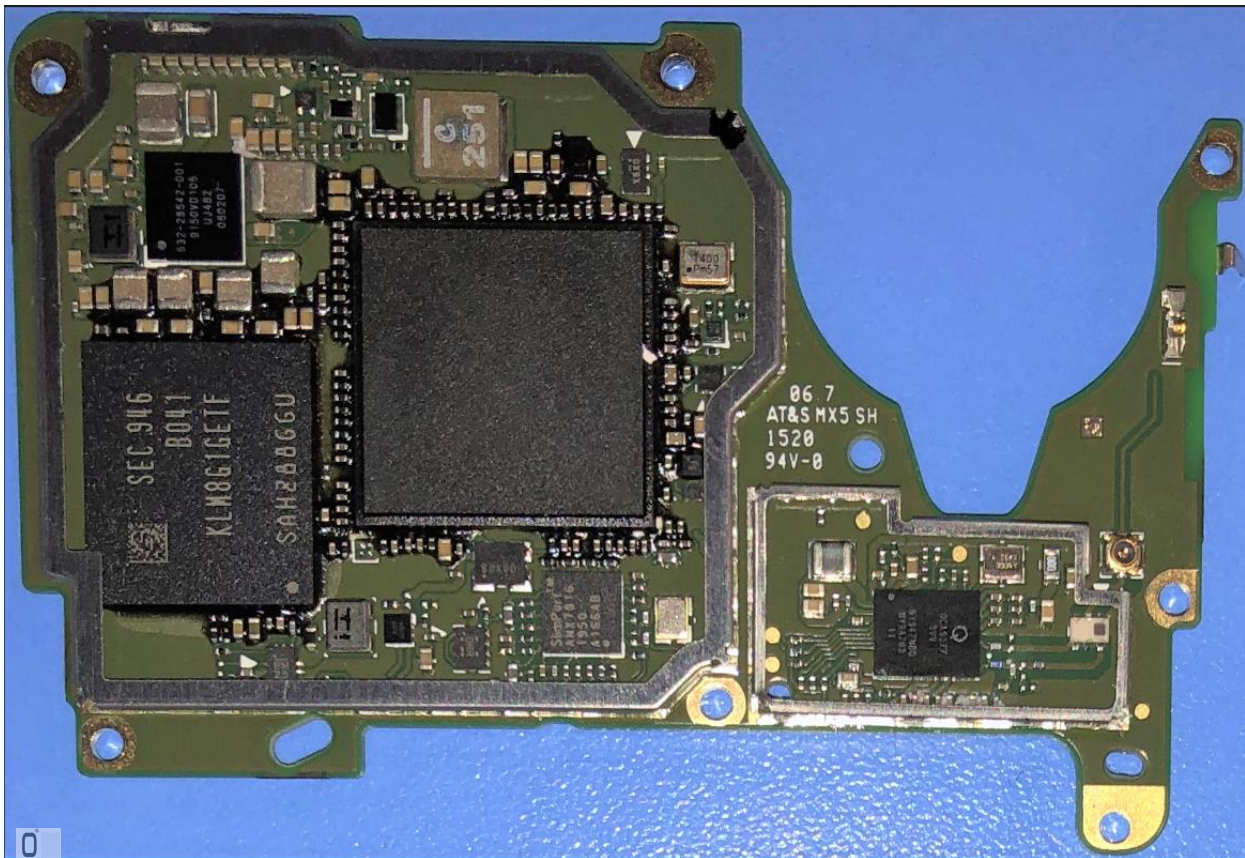


340-28698-000 PCBA, MAIN, -Front with shield, SPBL1

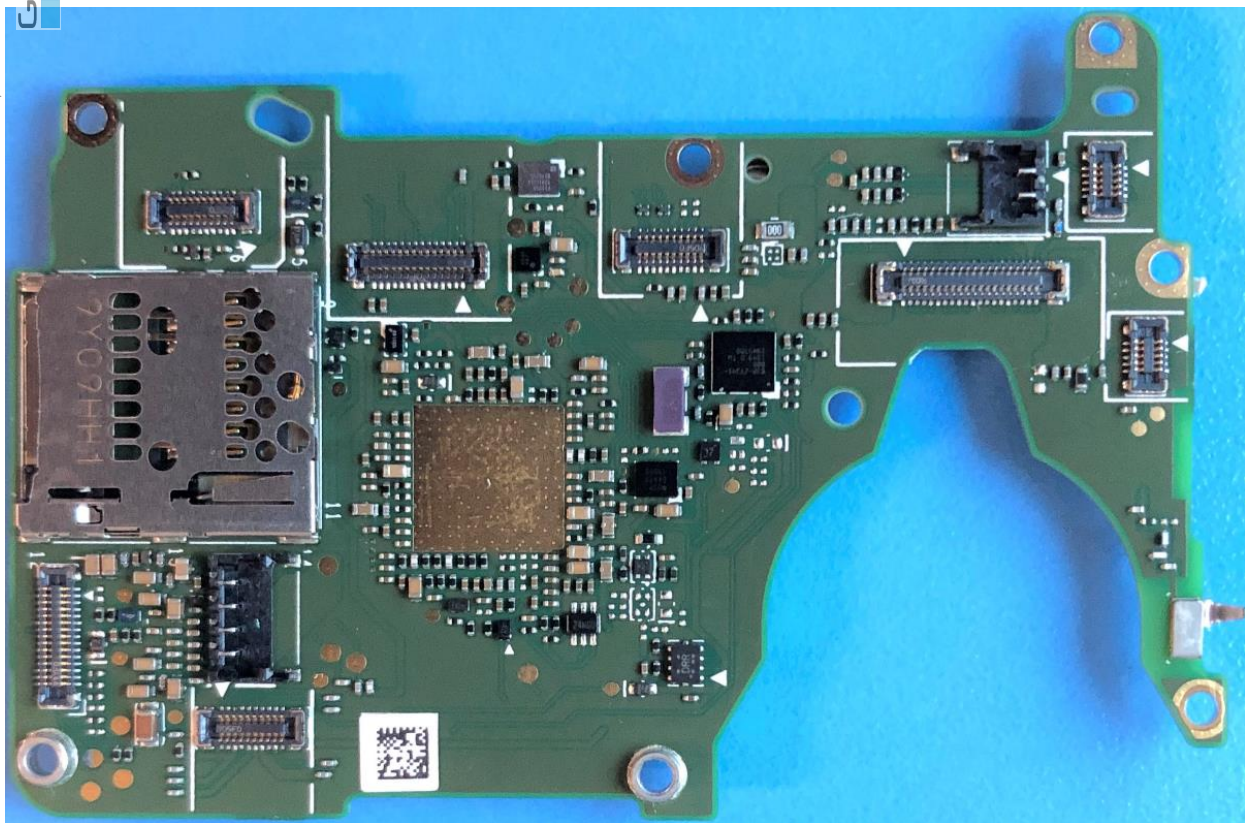


NOTICE:

This Report is the property of GoPro, Inc. No content may be copied, distributed, published, or used in any way, in whole or in part, without the express written permission of GoPro, Inc.



340-28698-000 PCBA, MAIN-Front with shield removed, SPBL1



340-28698-000 PCBA, MAIN-Back, SPBL1

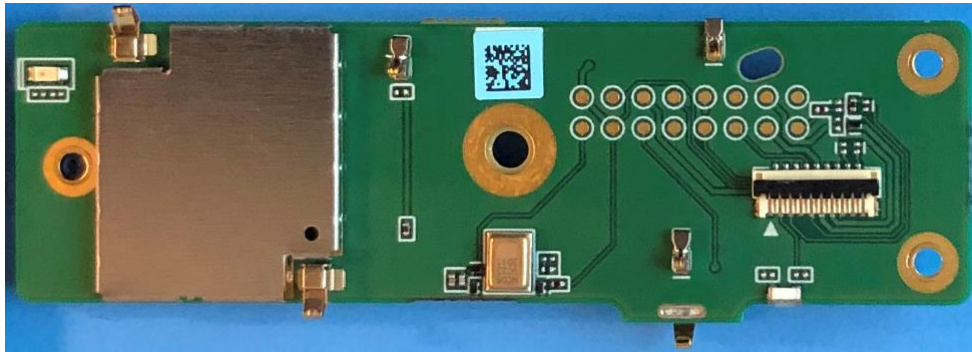


NOTICE:

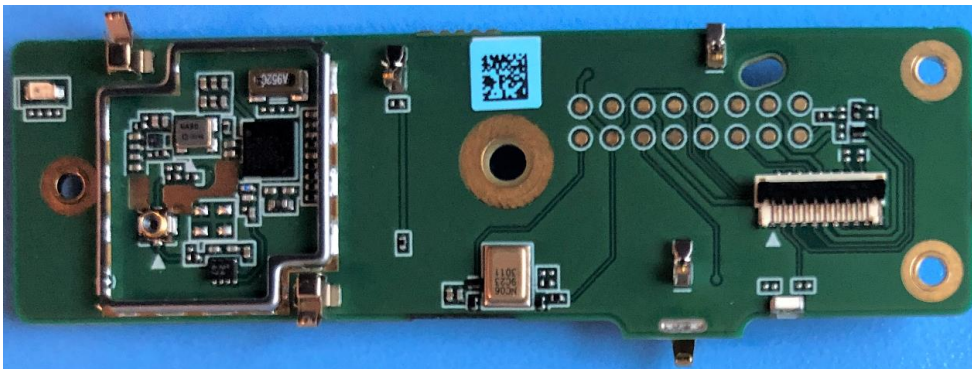
This Report is the property of GoPro, Inc. No content may be copied, distributed, published, or used in any way, in whole or in part, without the express written permission of GoPro, Inc.



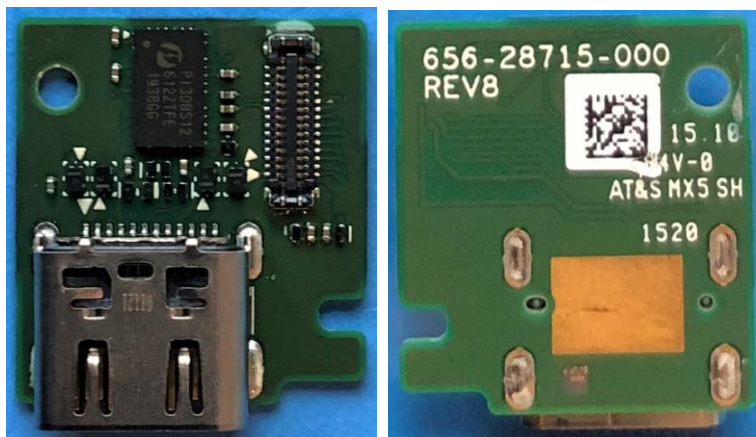
340-28700-000 PCBA, GPS-Front, SPBL1



340-28700-000 PCBA, GPS-Back with shield, SPBL1



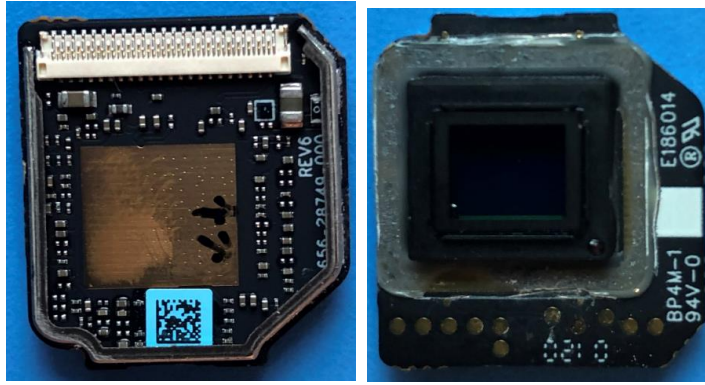
340-28700-000 PCBA, GPS-Back with shield removed, SPBL1



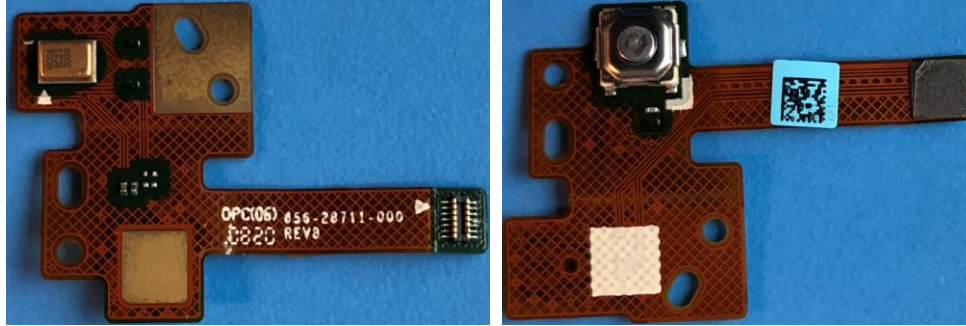
340-28714-000 PCBA, USB-C -Front, SPBL1

NOTICE:

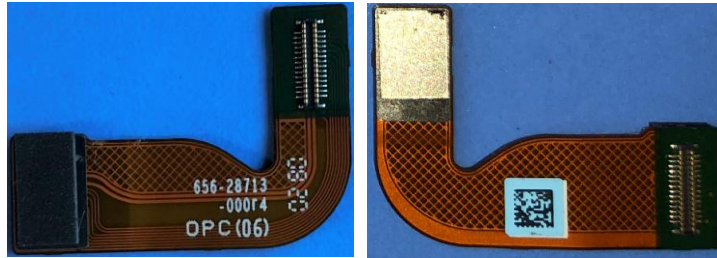
This Report is the property of GoPro, Inc. No content may be copied, distributed, published, or used in any way, in whole or in part, without the express written permission of GoPro, Inc.



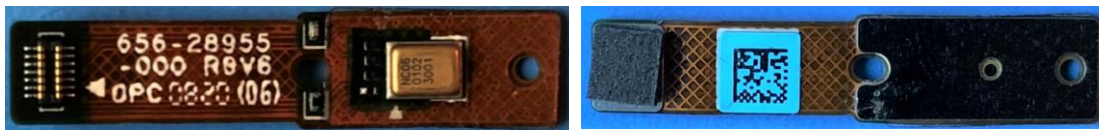
340-28748-000 PCBA, SENSOR, SPBL1



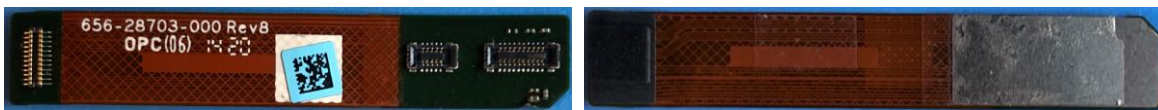
340-28710-000 ASSY, FPC, MODE, SPBL1



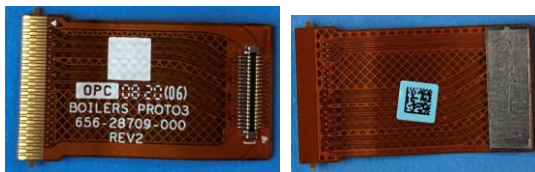
340-28712-000 ASSY, FPC, USB-C, SPBL1



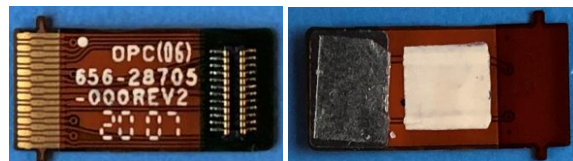
340-28954-000 ASSY, FPC, MIC, FRONT, SPBL1



340-28702-000 ASSY, FPC, LCD JUMPER, SPBL1

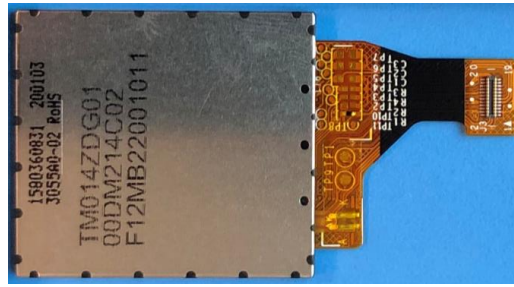
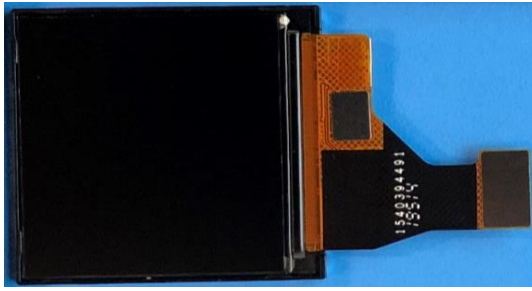


340-28708-000 ASSY, FPC, JUMPER, IMAGE SENSOR, SPBL1



340-28704-000 ASSY, FPC, GPS, SPBL1





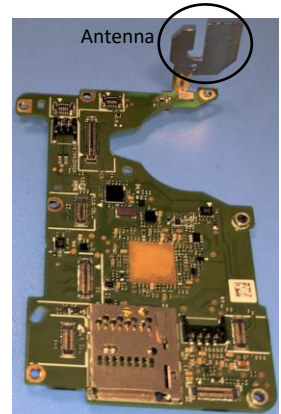
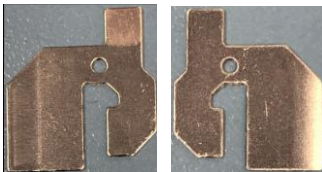
640-29088-000/640-29089-000, Front LCD module, SPBL1



640-28968-000/640-28967-000/640-28969-000, Rear LCD module, SPBL1

NOTICE:

This Report is the property of GoPro, Inc. No content may be copied, distributed, published, or used in any way, in whole or in part, without the express written permission of GoPro, Inc.



425-28809-000, ANTENNA, BT/WIFI, SPBL1

BT/WIFI antenna location, SPBL1



ATL Li-ion Battery Pack with blue tab, SPBL1B



ATL Li-ion Battery Pack with black tab, SPBL1B



BYD Li-ion Battery Pack with blue tab, , SPBL1B



BYD Li-ion Battery Pack with black tab, , SPBL1B