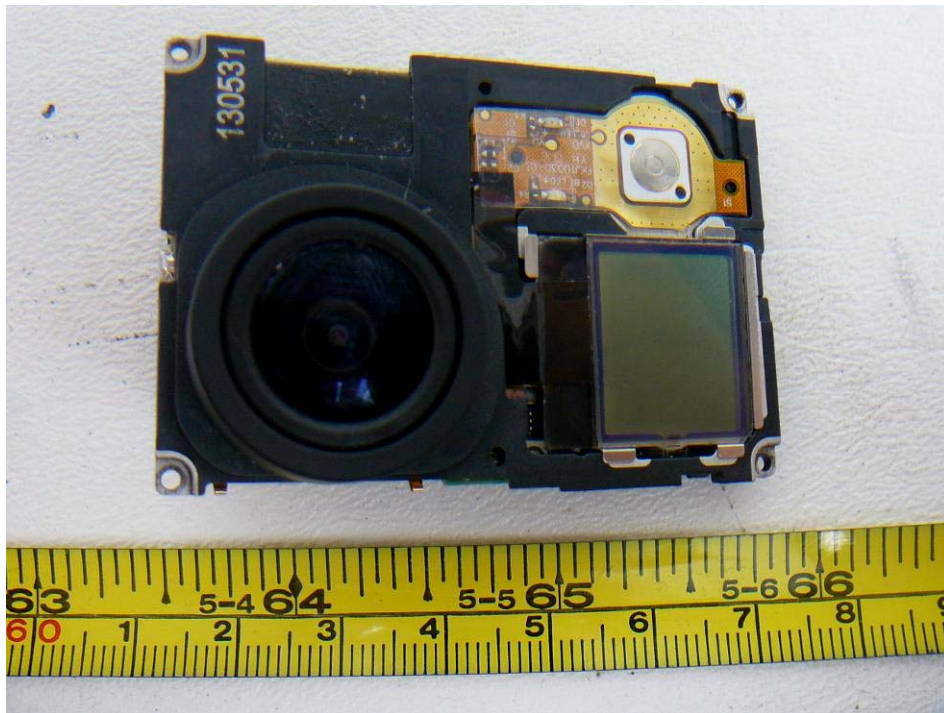
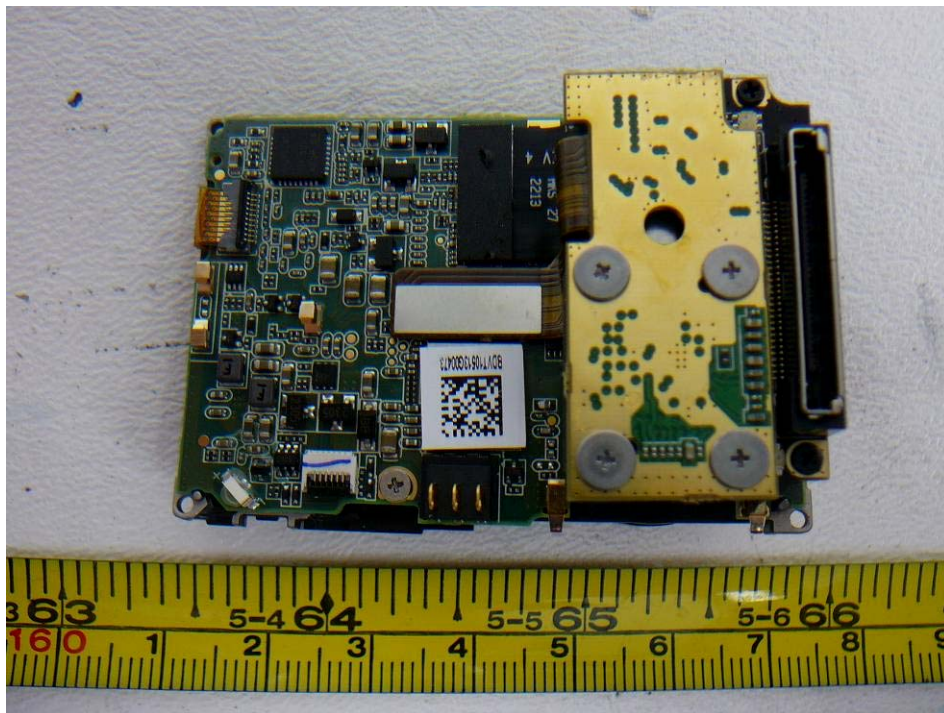


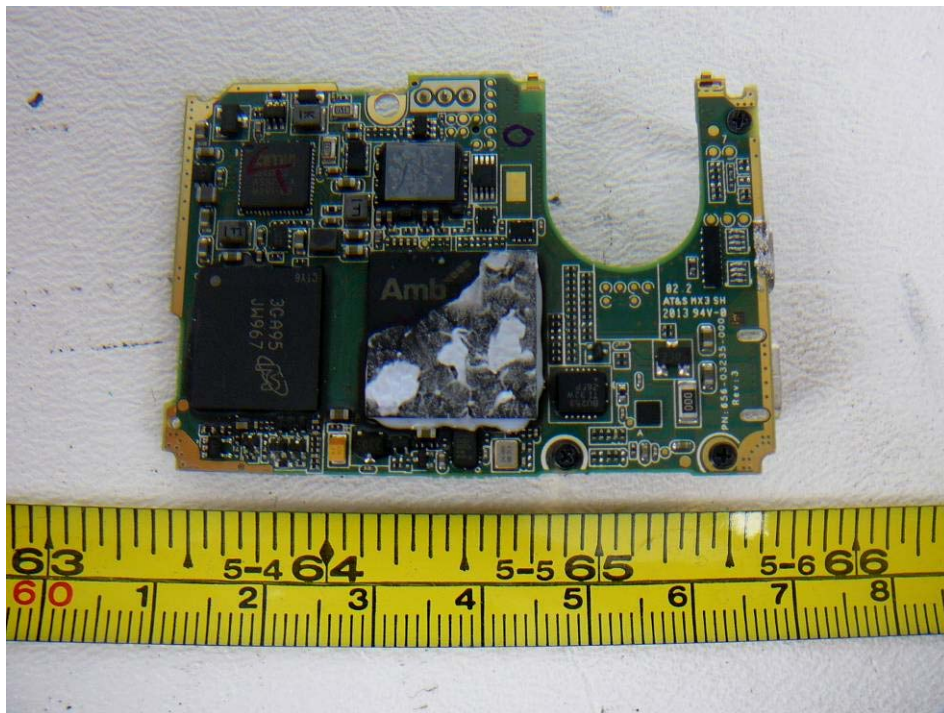
**16.7 EUT – Open case View**



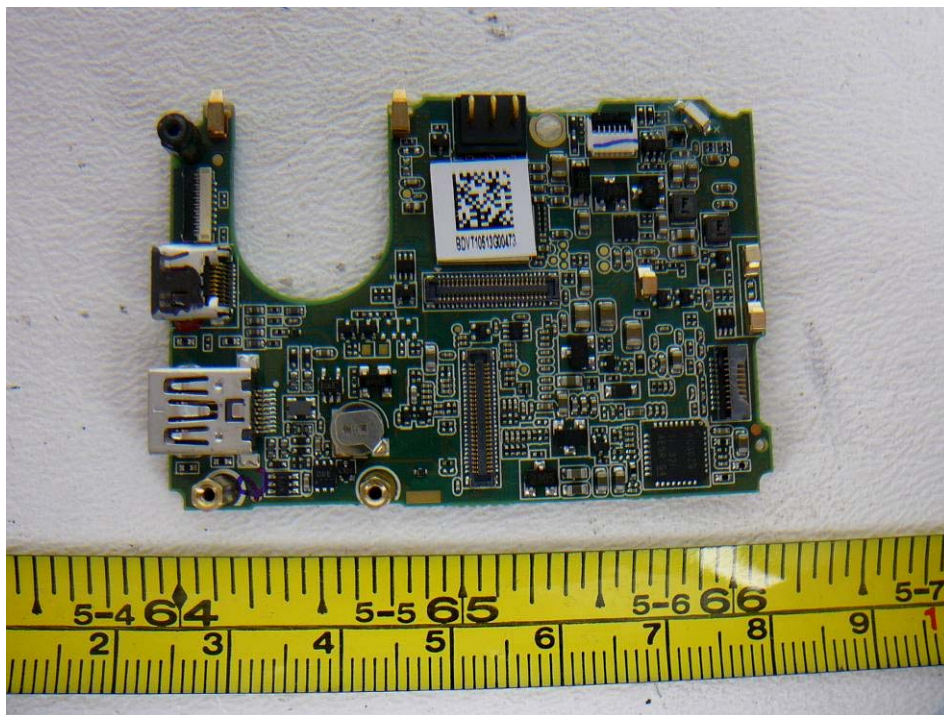
**16.8 EUT – PCB Assembled View**



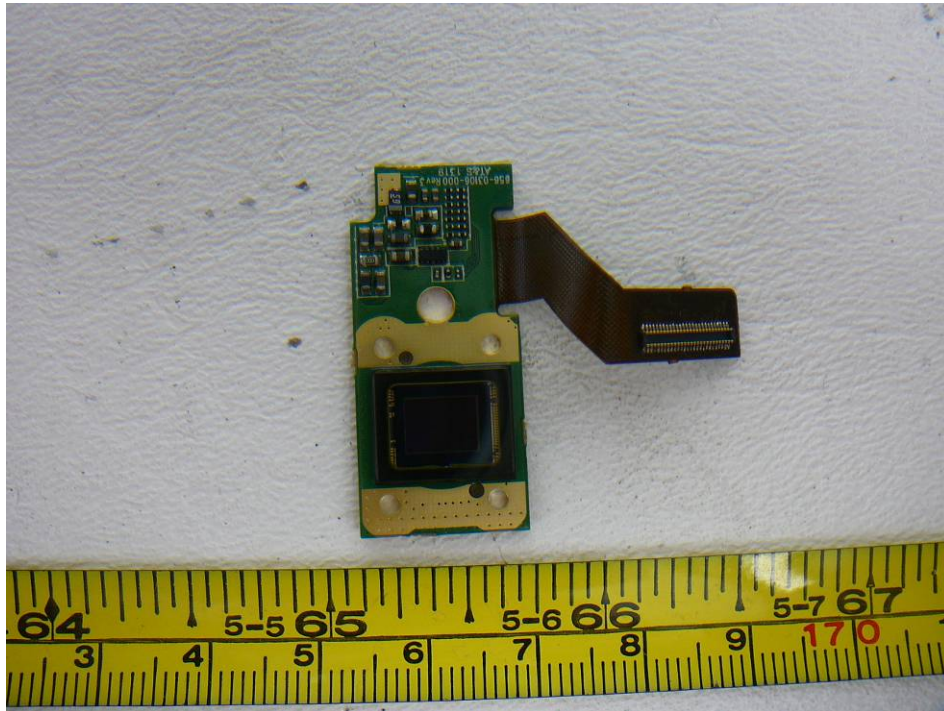
**16.9 EUT – Main PCB Top View**



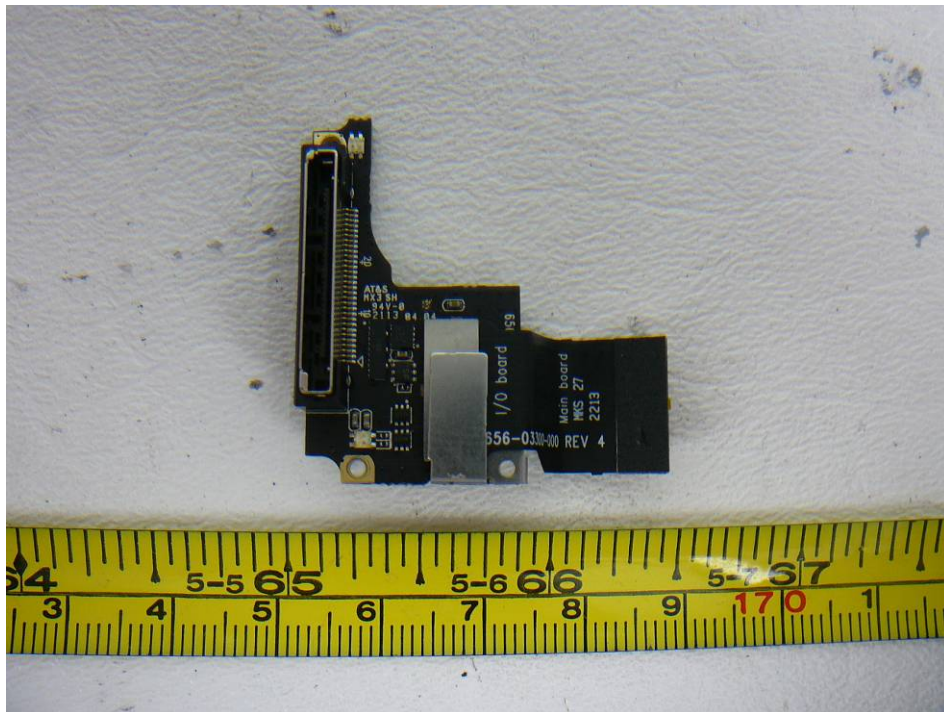
**16.10 EUT – Main PCB Bottom View**



**16.11 EUT – PCB 1 View**



**16.12 EUT – PCB 2 View**



**16.13 EUT – Battery view**



**16.14 EUT – AC/DC Adapter**



--- END OF REPORT ---