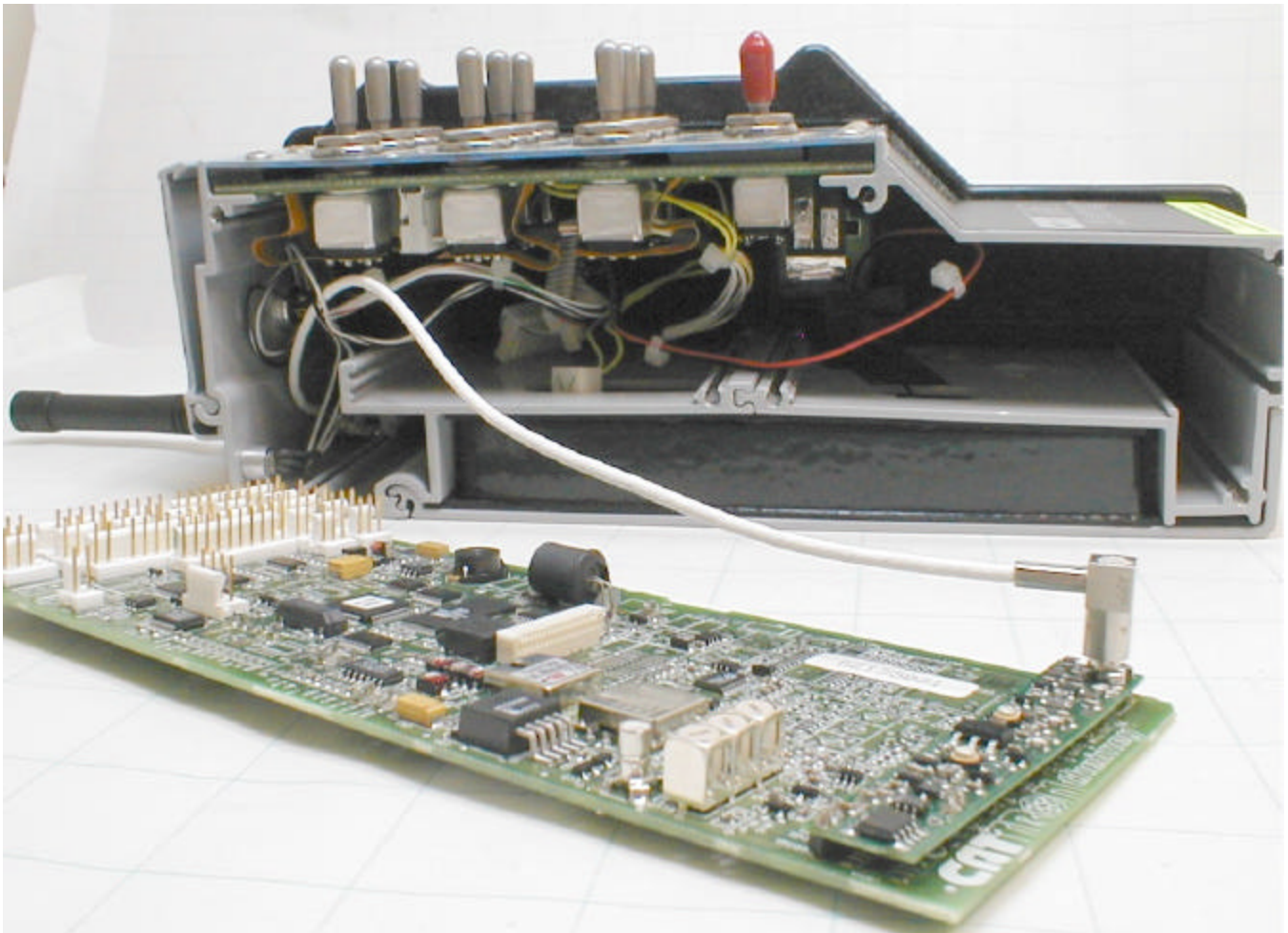
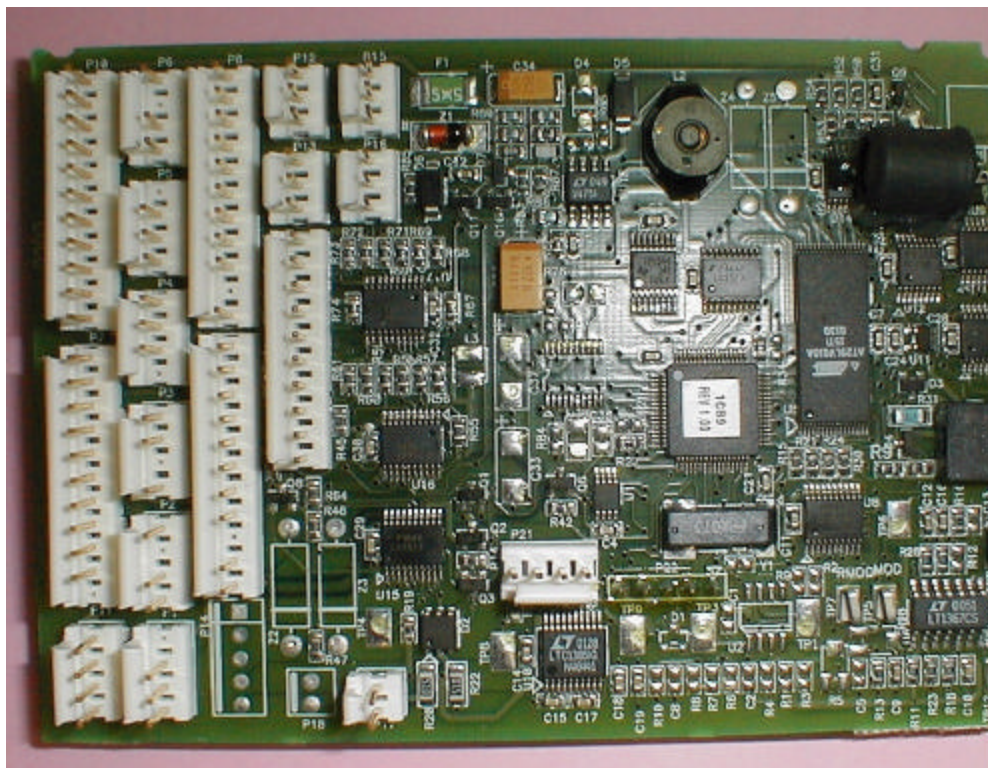


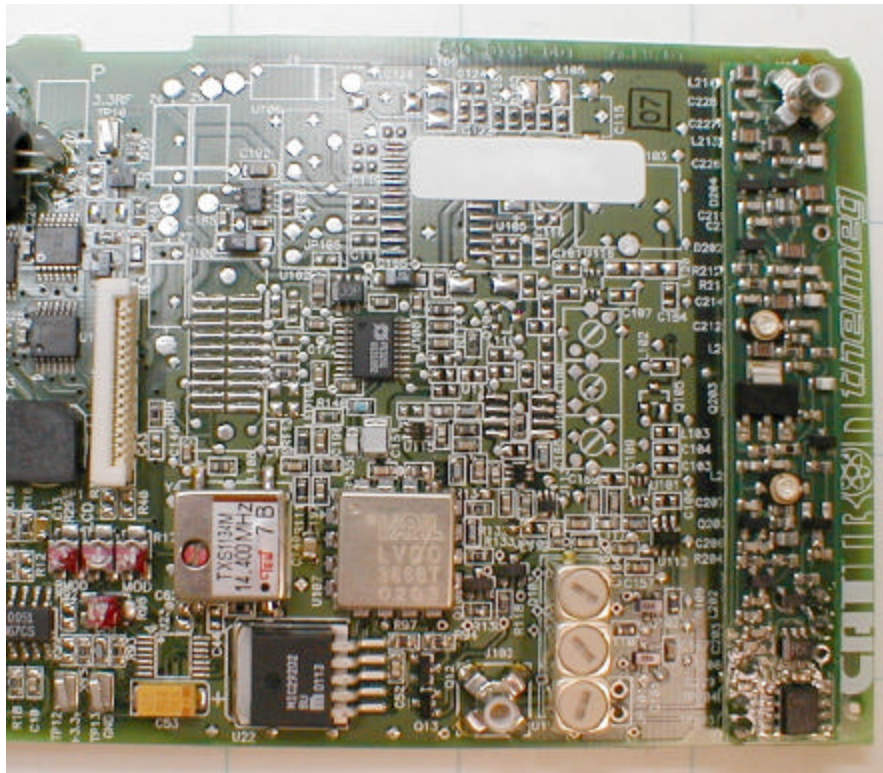
Side Cover Removed, Antenna Lead Connected to Amp Board



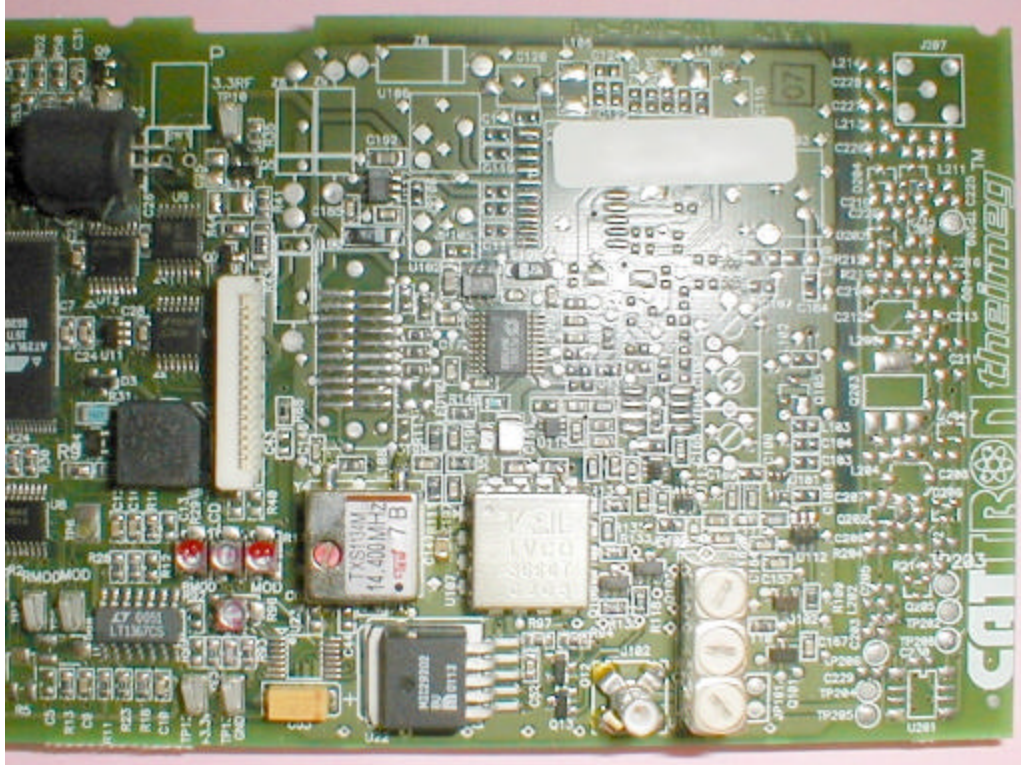
Top View of Board, Left Side



Top View of Board, Right Side



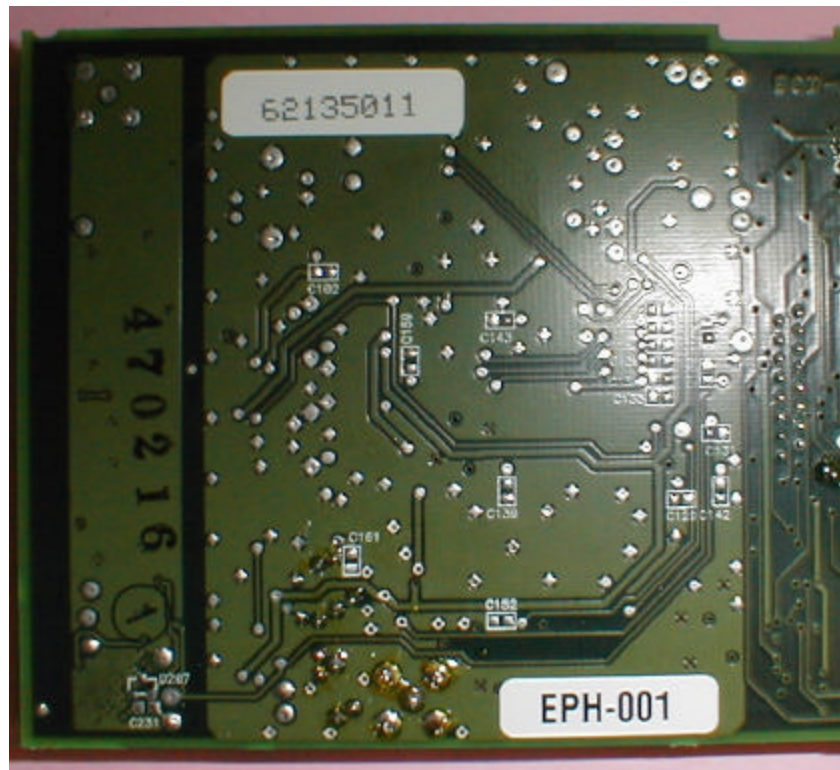
Top View of Board, Right Side, RF Amp Board Removed



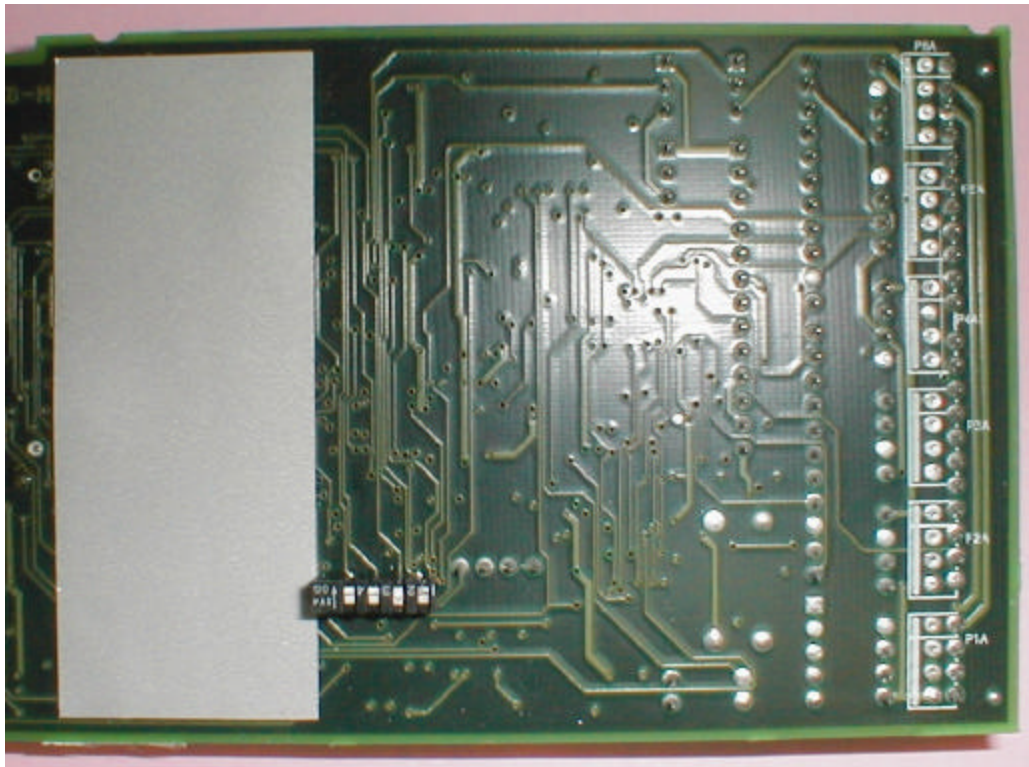
Bottom of Amp Board



Bottom View of PC Board, Left Side



Bottom View of PC Board, Right Side



Bottom View, Shield Removed

