

Internal Photos

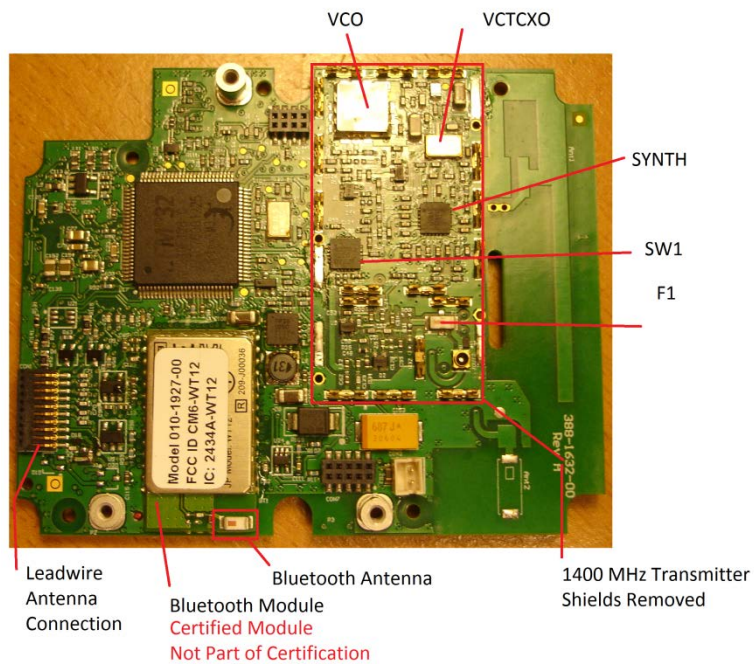


Figure 1: Annotated views of the Main PCBA Side A
The Main PCBA is Spacelabs P/N 670-1190-00

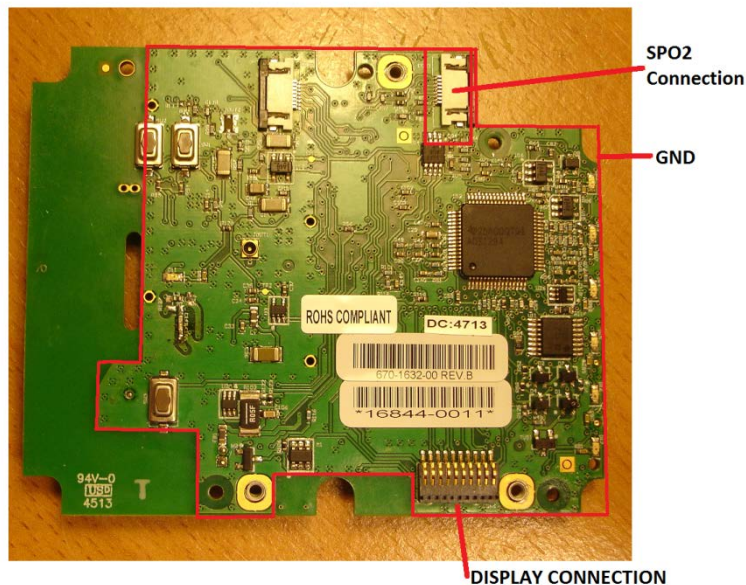


Figure 1: Annotated views of the Main PCBA Side B
The Main PCBA is Spacelabs P/N 670-1190-00

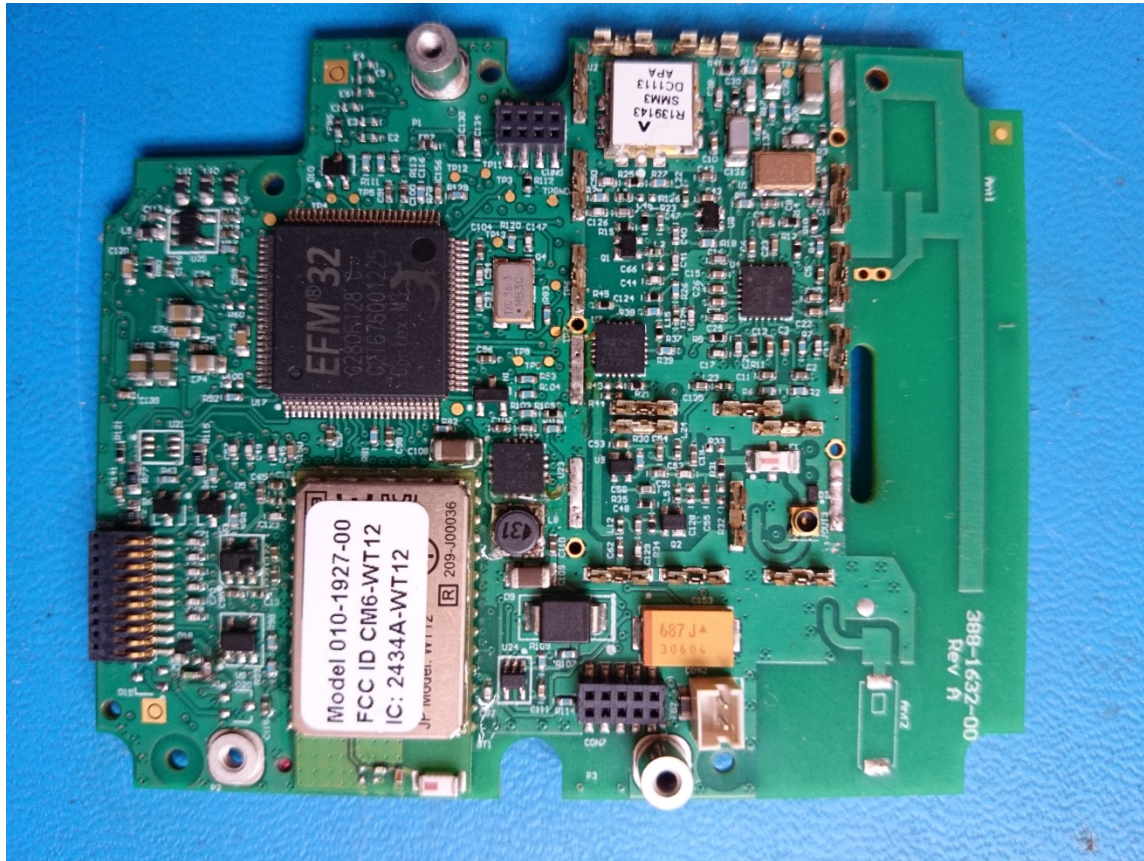


Figure 3: Detail view of the Main PCBA side A, with shields removed

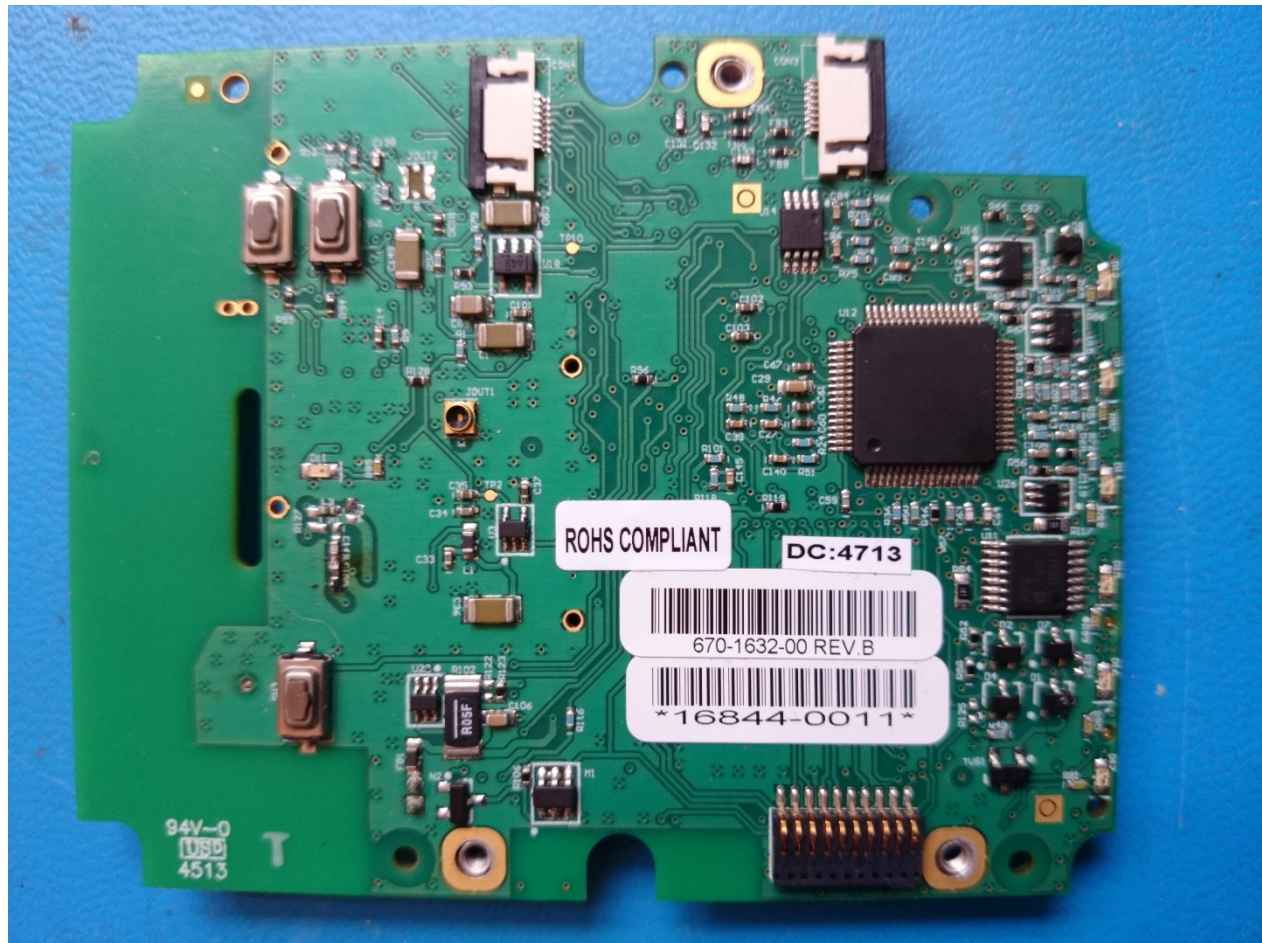


Figure 4: Detail view of the Main PCBA side B



Figure 5: Transmitter 96281-C with Display PCBA removed SPO2 board fitted



Figure 8: 96281-B components – Main PCBA and Display PCBA



Figure 9: 96281-A components – this option uses the Main PCBA only