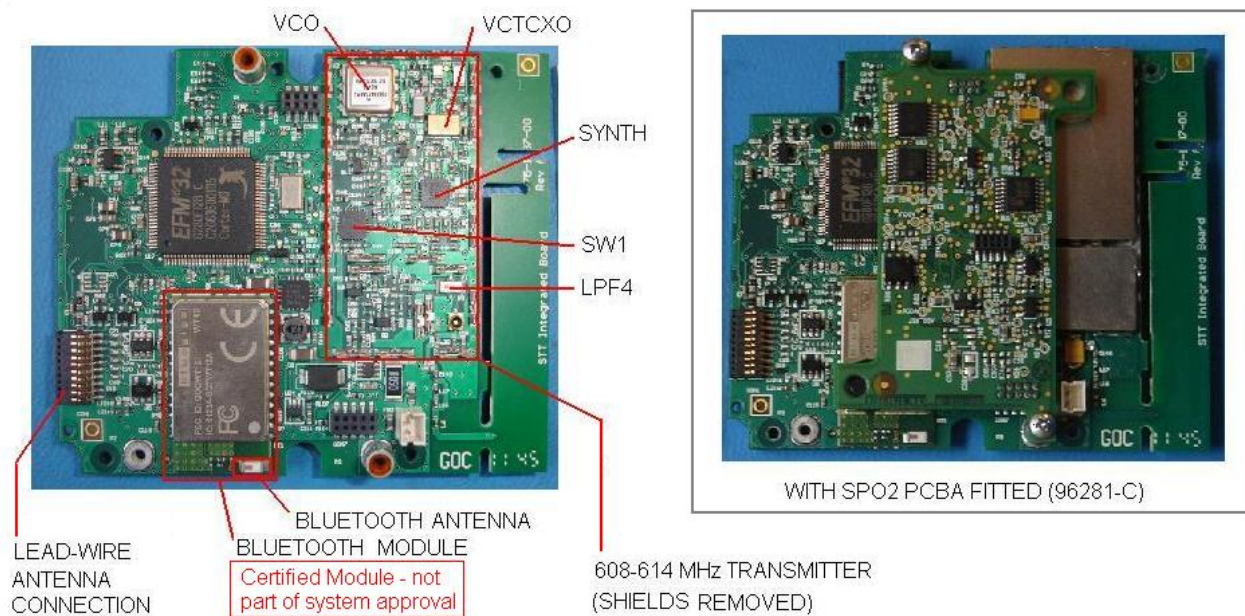
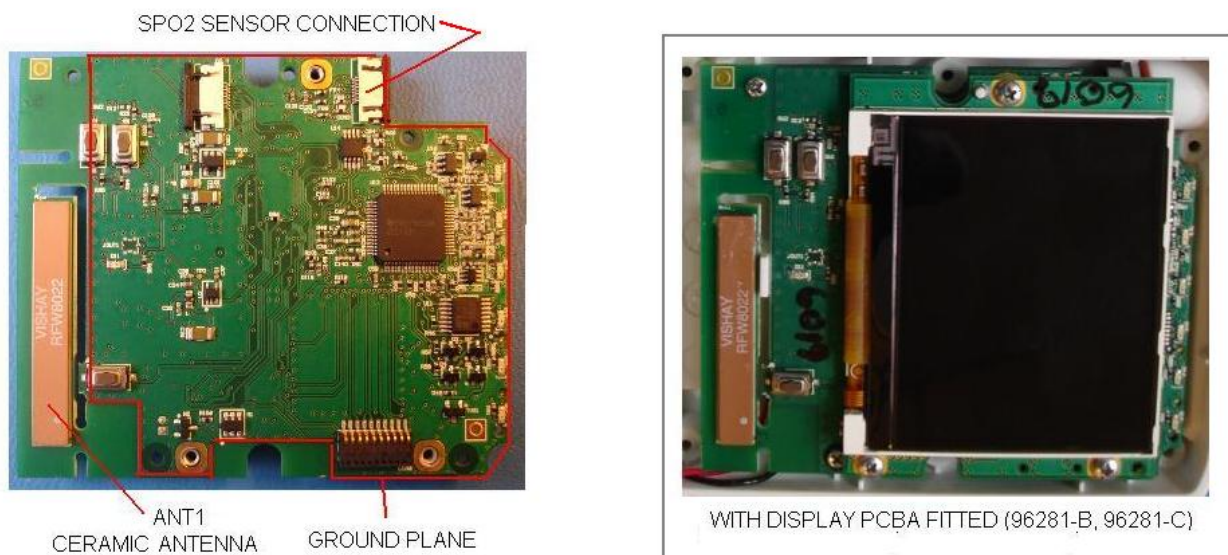


Internal Photos



96281-x05 Main Printed Circuit Board Assembly - Side A



96281-x05 Main Printed Circuit Board Assembly - Side B

Figure 1: Annotated views of the Main PCBA (see next page for detail views)  
The Main PCBA is Spacelabs P/N 670-1187-00

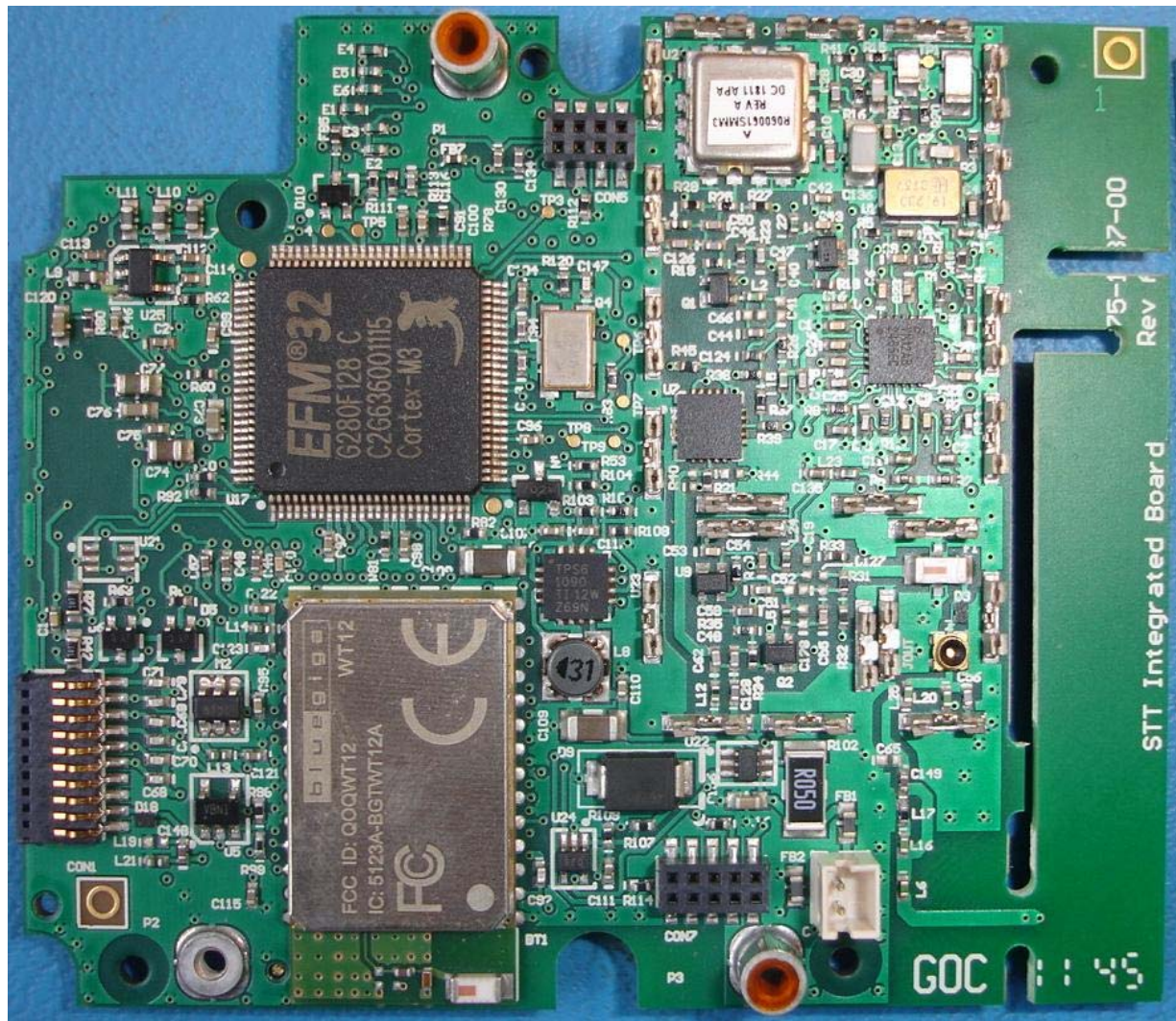


Figure 2: Detail view of the Main PCBA side A, with shields removed



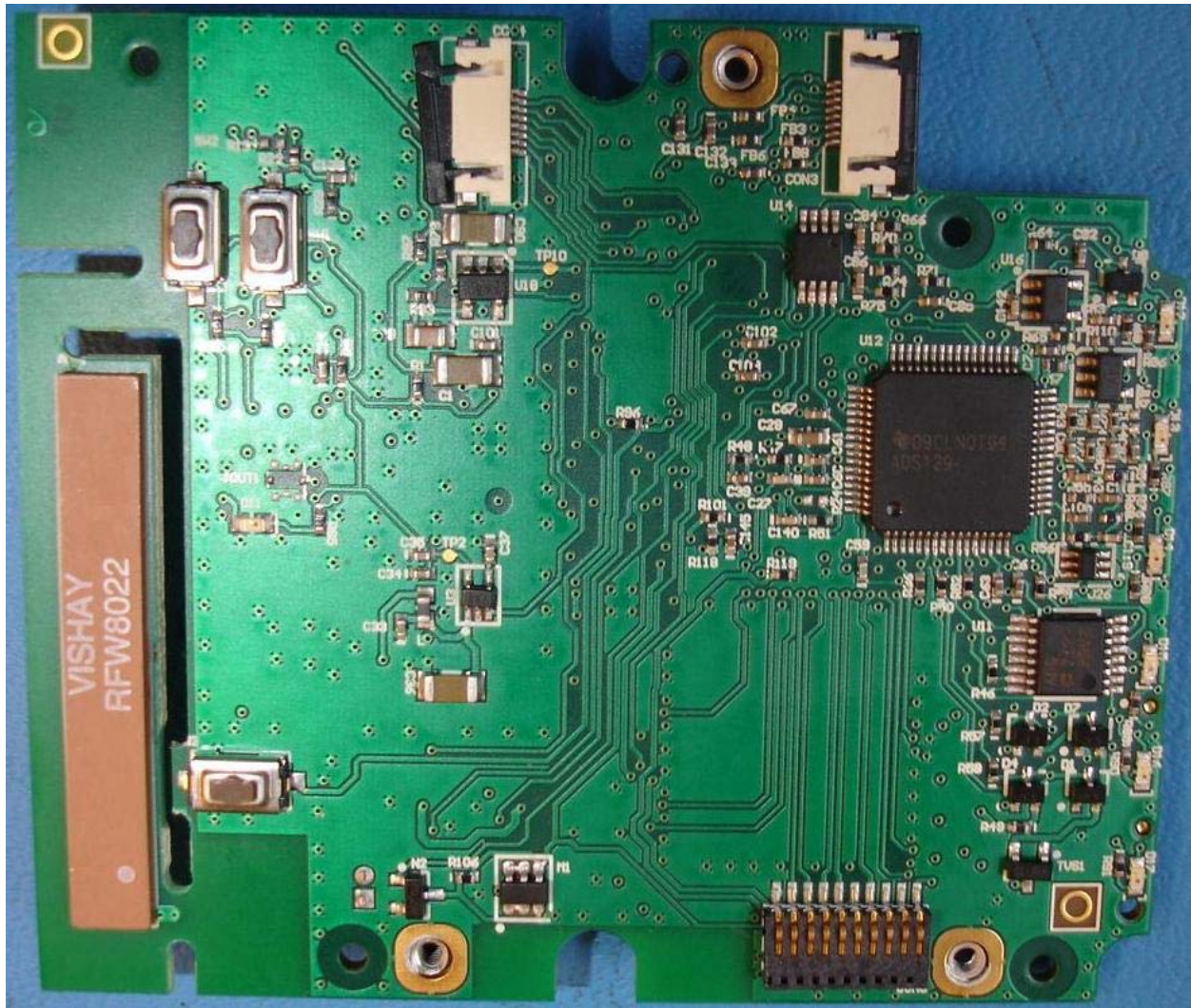


Figure 3: Detail view of the Main PCBA side B



Figure 4: Transmitter 96281-C assembly with front cover removed



Figure 5: Transmitter 96281-C with Display PCBA removed





Figure 6: Transmitter 96281-C with Main PCBA and Display PCBA removed



Figure 7: Transmitter 96281-C showing reverse side of PCBAs



Figure 8: 96281-B components – Main PCBA and Display PCBA



Figure 9: 96281-A components – this option uses the Main PCBA only