

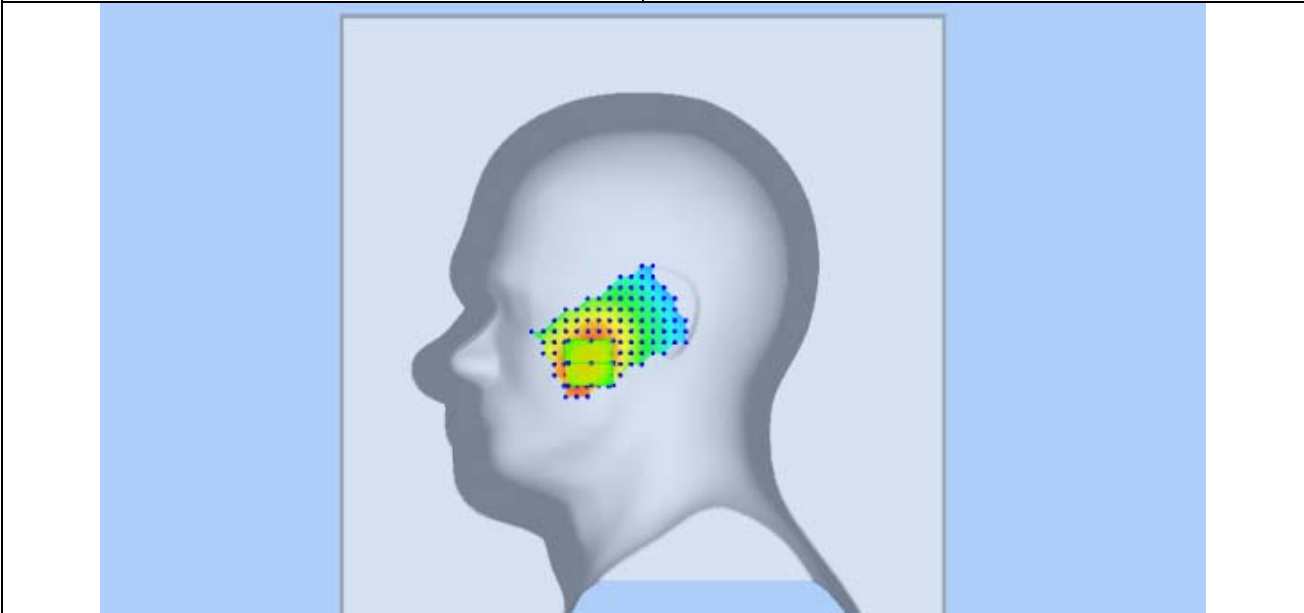
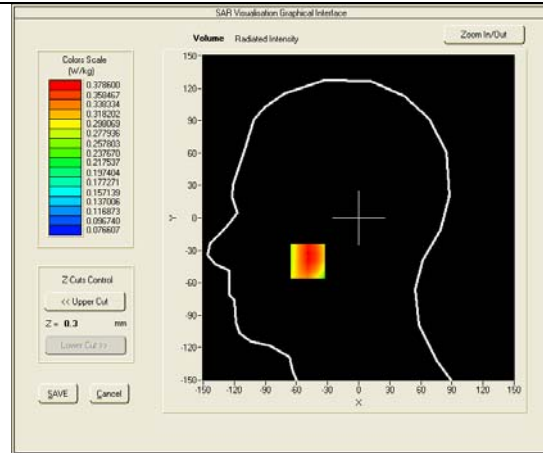
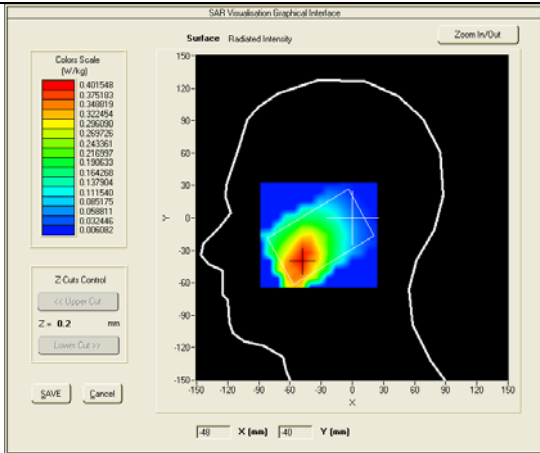
### SAR measurement Plots

Test mode: GSM850, Middle channel (Right Head Cheek)  
 Product Description: GSM/WCDMA MOBILE PHONE  
 Model: M4 SS1090  
 Test Date: May 25th, 2013

Medium(liquid type)	HSL_850
Frequency (MHz)	836.6000
Relative permittivity (real part)	40.777
Conductivity (S/m)	0.899
E-Field Probe	SN 18/11 EPG123
Crest factor	8.0
Conversion Factor	7.53
Sensor-Surface	4mm
Area Scan	dx=8mm dy=8mm
Zoom Scan	5x5x7,dx=8mm dy=8mm dz=5mm
Variation (%)	-1.98000
SAR 10g (W/Kg)	0.284203
SAR 1g (W/Kg)	0.375786

#### SURFACE SAR

#### VOLUME SAR

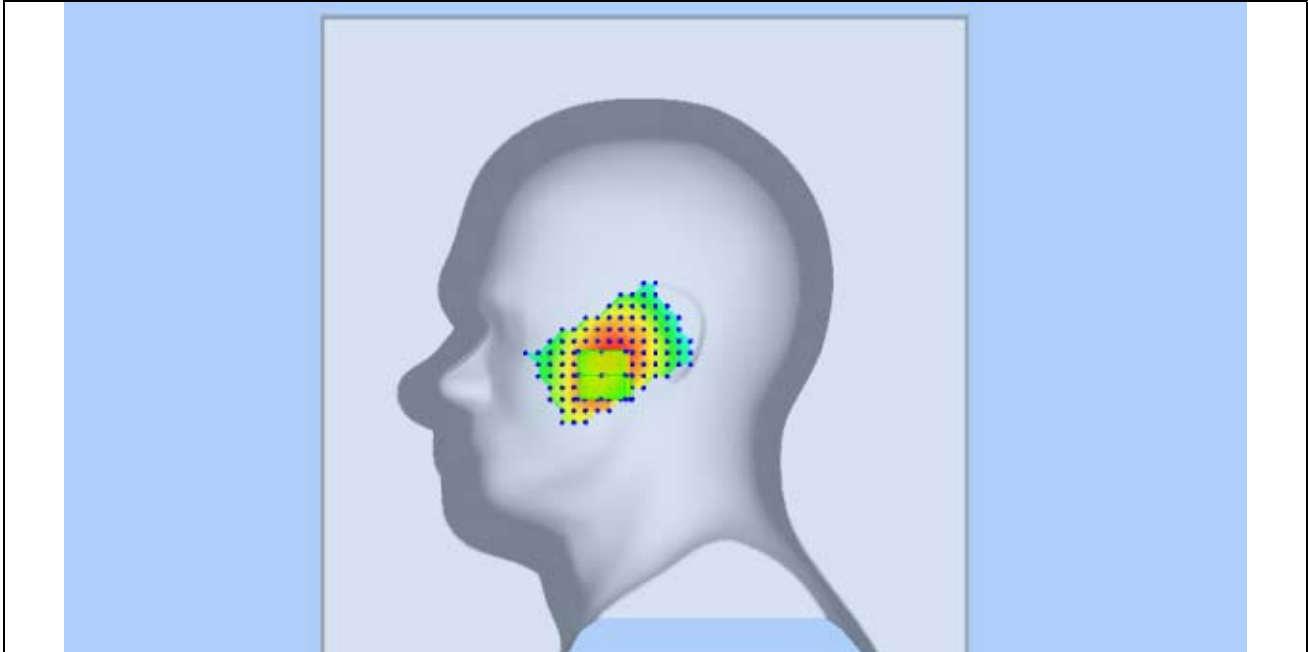
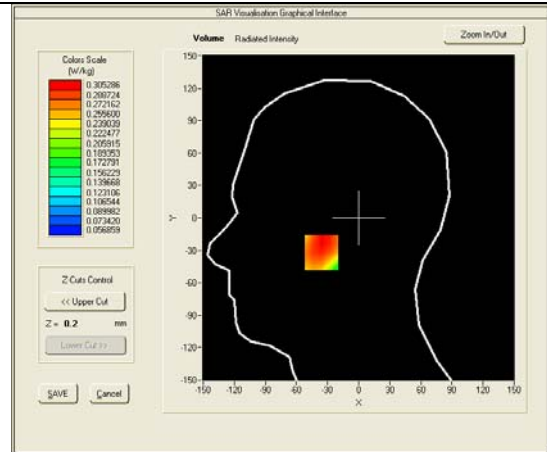
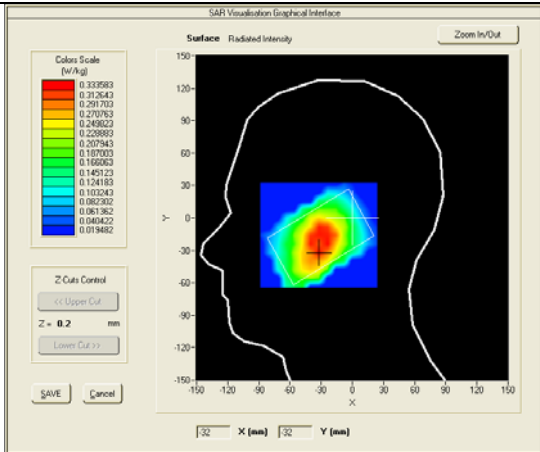


Test mode: GSM850, Middle channel (Right Head Tilt)  
 Product Description: GSM/WCDMA MOBILE PHONE  
 Model: M4 SS1090  
 Test Date: May 25th, 2013

Medium(liquid type)	HSL_850
Frequency (MHz)	836.6000
Relative permittivity (real part)	40.777
Conductivity (S/m)	0.899
E-Field Probe	SN 18/11 EPG123
Crest factor	8.0
Conversion Factor	7.53
Sensor-Surface	4mm
Area Scan	dx=8mm dy=8mm
Zoom Scan	5x5x7,dx=8mm dy=8mm dz=5mm
Variation (%)	-2.89000
SAR 10g (W/Kg)	0.230277
SAR 1g (W/Kg)	0.298165

**SURFACE SAR**

**VOLUME SAR**

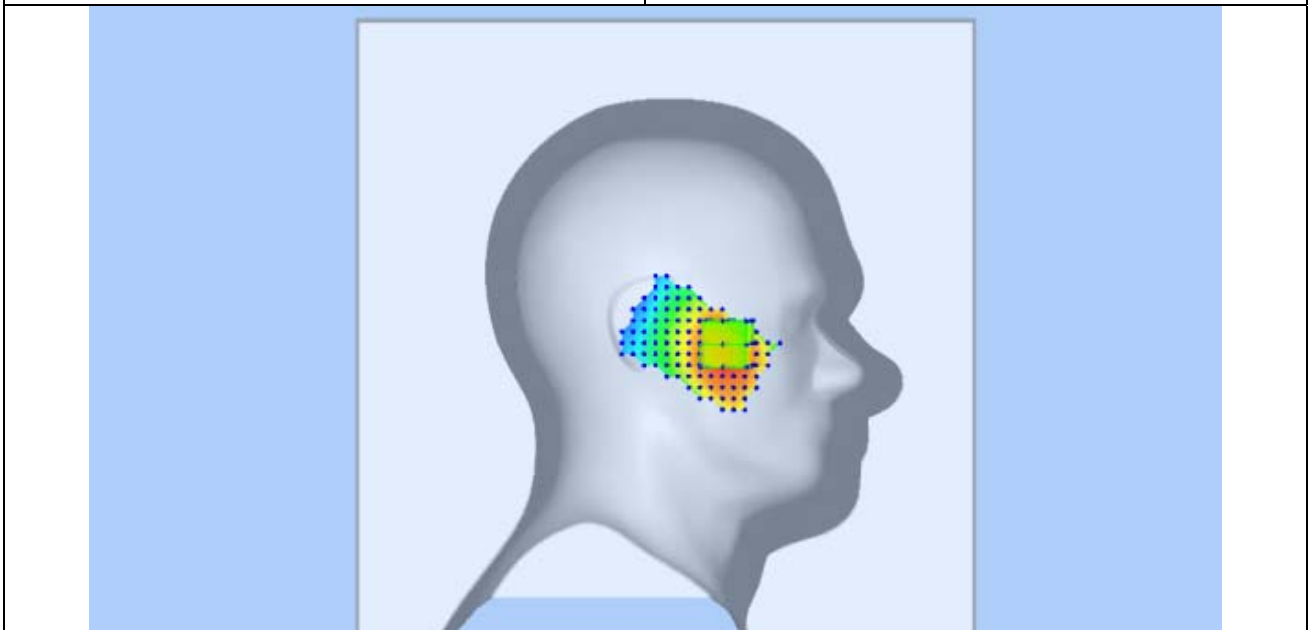
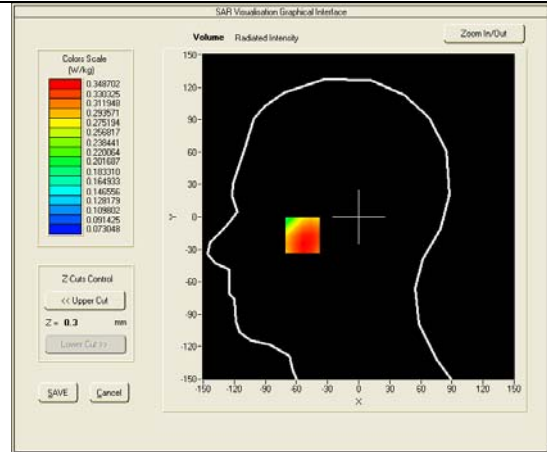
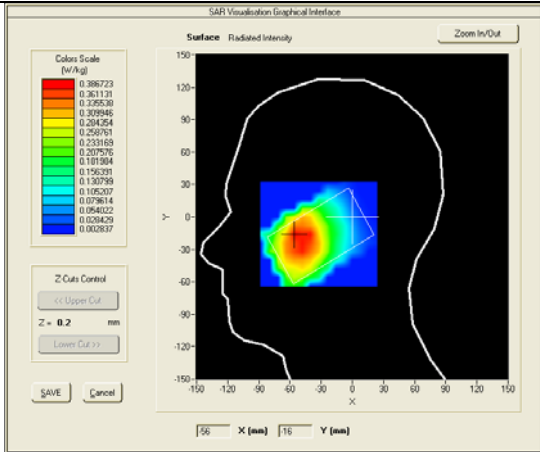


Test mode: GSM850, Middle channel (Left Head Cheek)  
 Product Description: GSM/WCDMA MOBILE PHONE  
 Model: M4 SS1090  
 Test Date: May 25th, 2013

Medium(liquid type)	HSL_850
Frequency (MHz)	836.6000
Relative permittivity (real part)	40.777
Conductivity (S/m)	0.899
E-Field Probe	SN 18/11 EPG123
Crest factor	8.0
Conversion Factor	7.53
Sensor-Surface	4mm
Area Scan	dx=8mm dy=8mm
Zoom Scan	5x5x7,dx=8mm dy=8mm dz=5mm
Variation (%)	2.55000
SAR 10g (W/Kg)	0.275614
SAR 1g (W/Kg)	0.341587

**SURFACE SAR**

**VOLUME SAR**

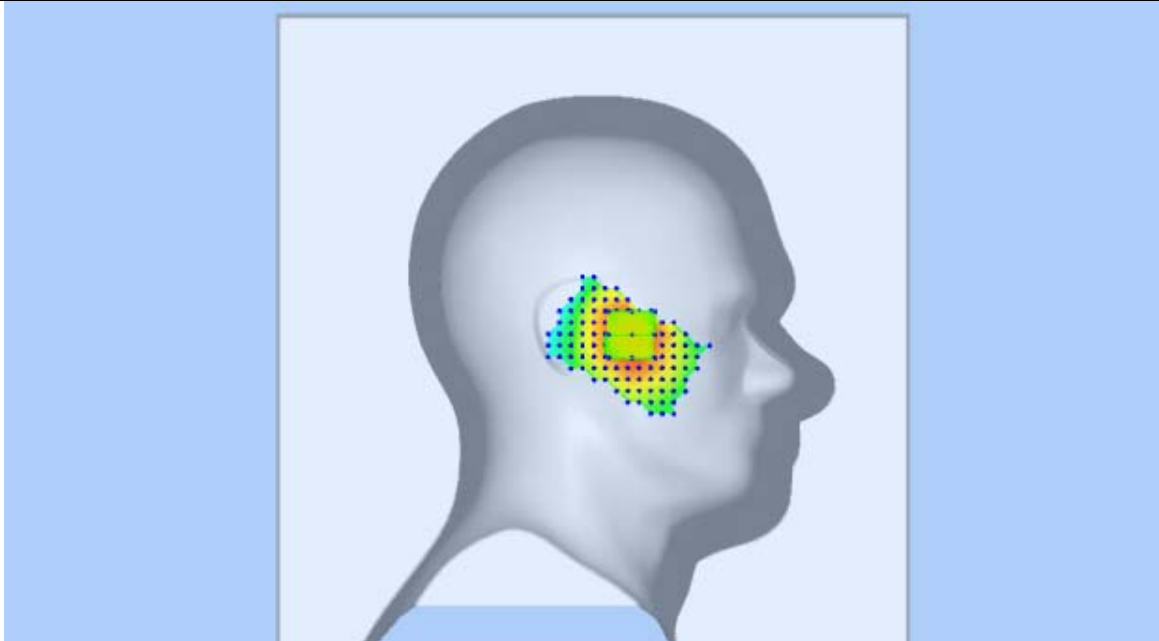
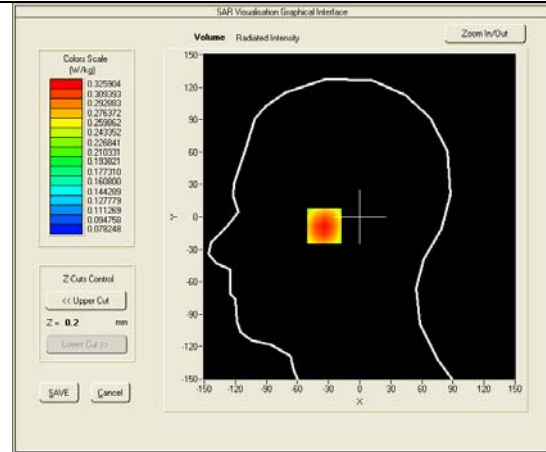
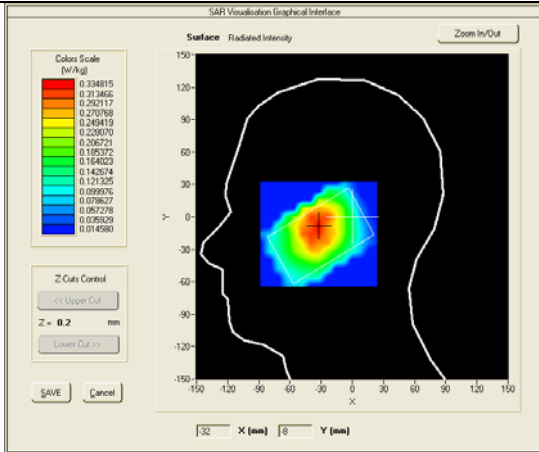


Test mode: GSM850, Middle channel (Left Head Tilt)  
 Product Description: GSM/WCDMA MOBILE PHONE  
 Model: M4 SS1090  
 Test Date: May 25th, 2013

Medium(liquid type)	HSL_850
Frequency (MHz)	836.6000
Relative permittivity (real part)	40.777
Conductivity (S/m)	0.899
E-Field Probe	SN 18/11 EPG123
Crest factor	8.0
Conversion Factor	7.53
Sensor-Surface	4mm
Area Scan	dx=8mm dy=8mm
Zoom Scan	5x5x7,dx=8mm dy=8mm dz=5mm
Variation (%)	-2.60000
SAR 10g (W/Kg)	0.236217
SAR 1g (W/Kg)	0.314245

**SURFACE SAR**

**VOLUME SAR**

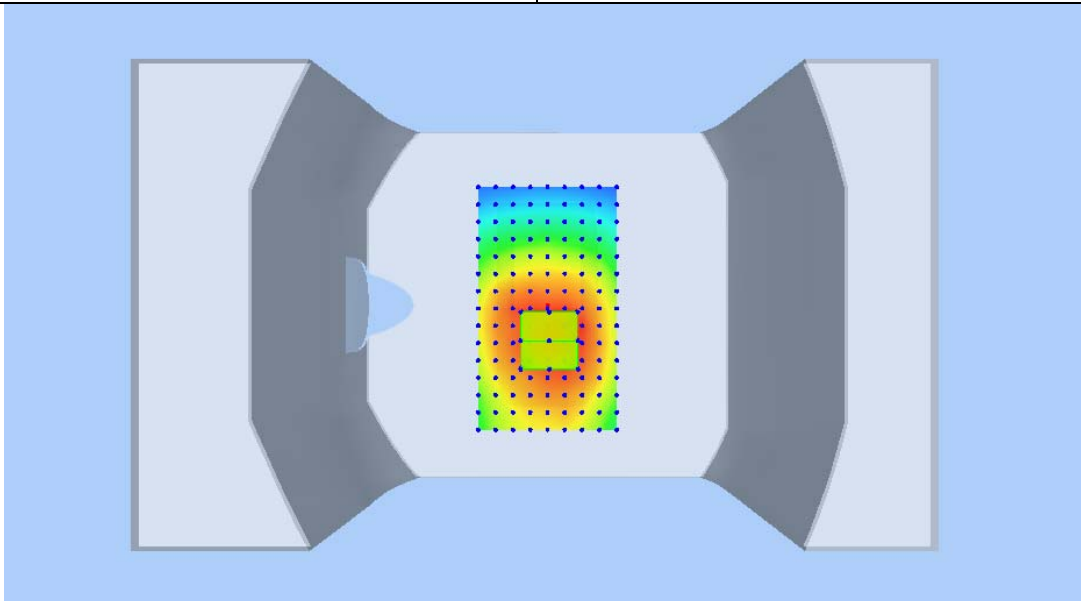
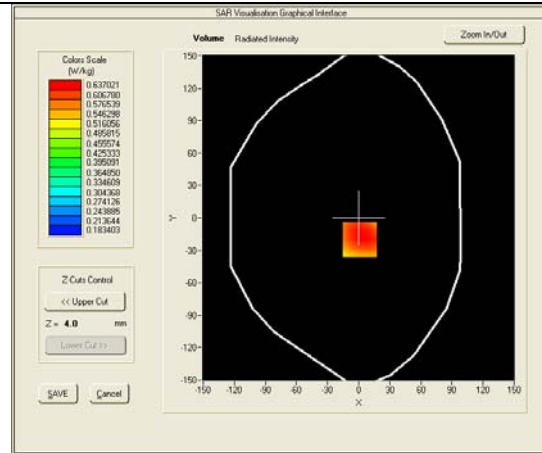
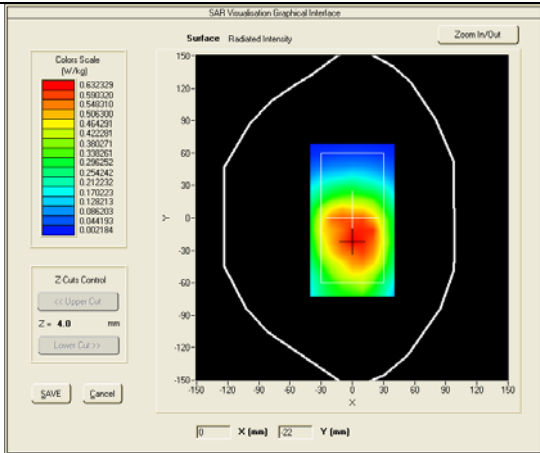


Test mode: GPRS850, Middle channel (Body-LCD UP, Edge front)  
 Product Description: GSM/WCDMA MOBILE PHONE  
 Model: M4 SS1090  
 Test Date: May 25th, 2013

Medium(liquid type)	MSL_850
Frequency (MHz)	836.6000
Relative permittivity (real part)	53.339
Conductivity (S/m)	0.981
E-Field Probe	SN 18/11 EPG123
Crest factor	2.0
Conversion Factor	7.75
Area Scan	dx=8mm dy=8mm
Zoom Scan	5x5x7, dx=8mm dy=8mm dz=5mm
Variation (%)	-2.18000
SAR 10g (W/Kg)	0.476124
SAR 1g (W/Kg)	0.630863

**SURFACE SAR**

**VOLUME SAR**

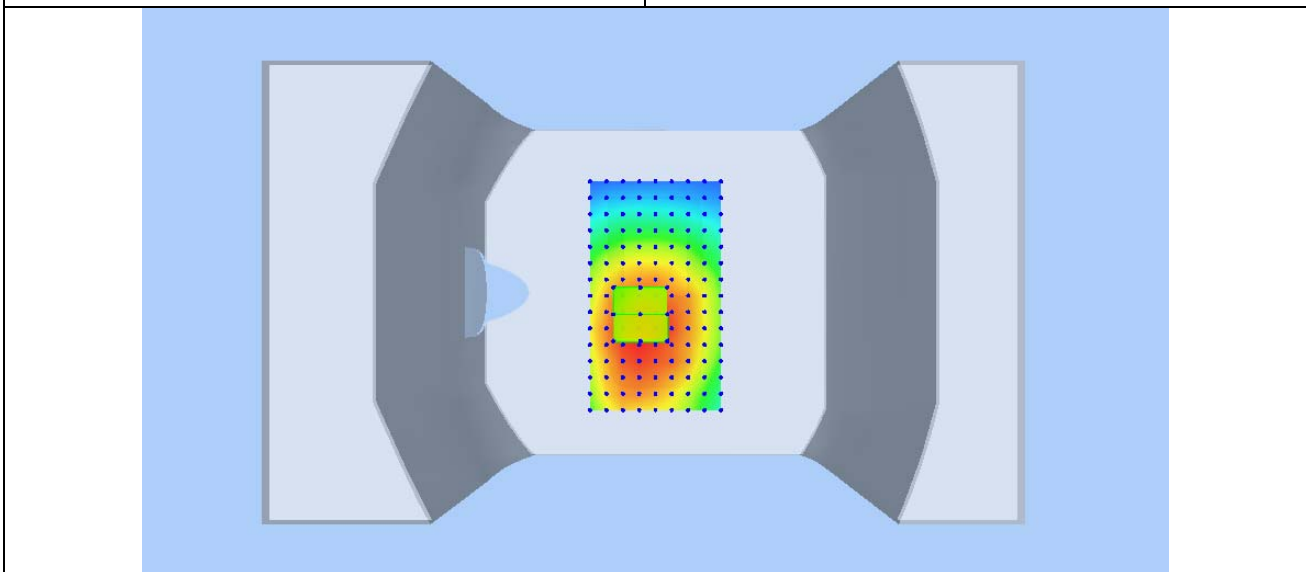
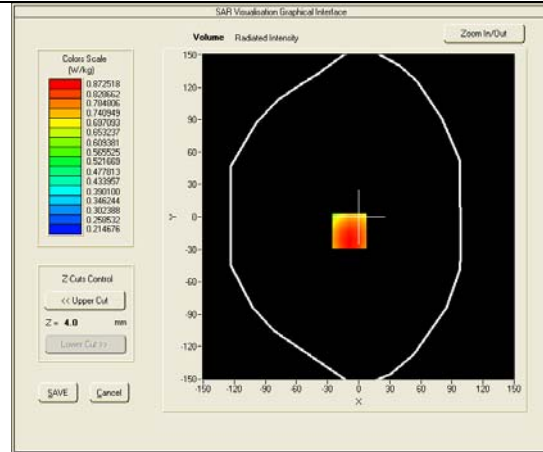
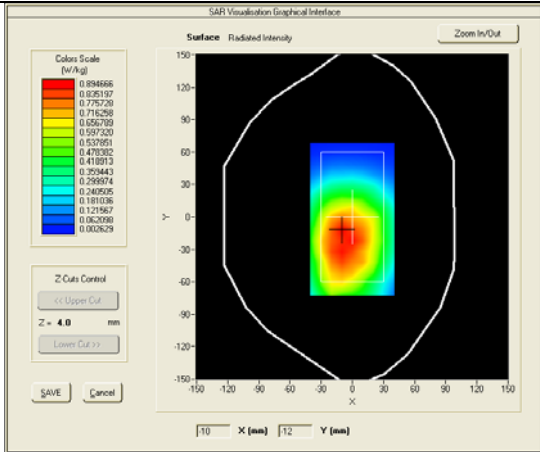


Test mode: GPRS850, low channel (Body-LCD DOWN, edge back)  
 Product Description: GSM/WCDMA MOBILE PHONE  
 Model: M4 SS1090  
 Test Date: May 25th, 2013

Medium(liquid type)	MSL_850
Frequency (MHz)	824.2000
Relative permittivity (real part)	53.339
Conductivity (S/m)	0.981
E-Field Probe	SN 18/11 EPG123
Crest factor	2.0
Conversion Factor	7.75
Sensor-Surface	4mm
Area Scan	dx=8mm dy=8mm
Zoom Scan	5x5x7, dx=8mm dy=8mm dz=5mm
Variation (%)	2.60000
SAR 10g (W/Kg)	0.655849
SAR 1g (W/Kg)	0.850656

**SURFACE SAR**

**VOLUME SAR**

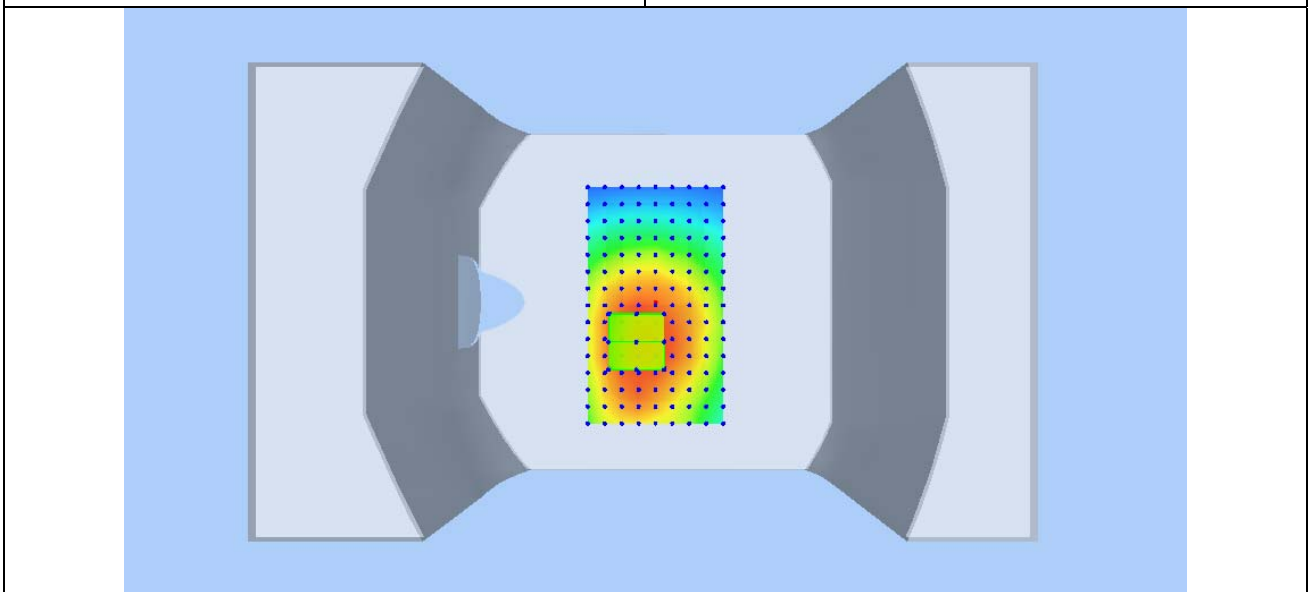
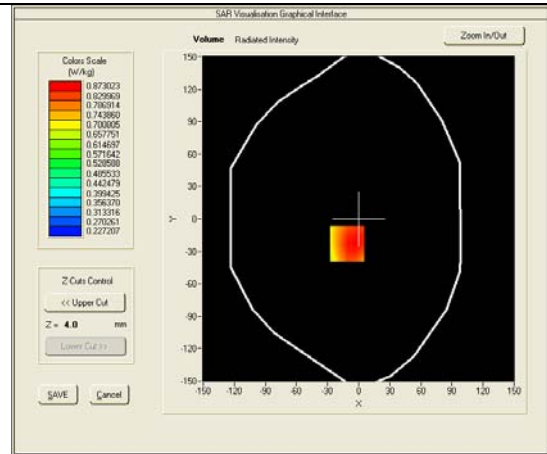
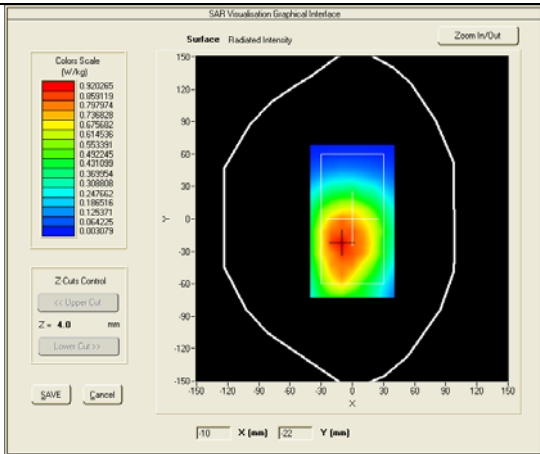


Test mode: GPRS850, Middle channel (Body-LCD DOWN, edge back)  
 Product Description: GSM/WCDMA MOBILE PHONE  
 Model: M4 SS1090  
 Test Date: May 25th, 2013

Medium(liquid type)	MSL_850
Frequency (MHz)	836.6000
Relative permittivity (real part)	53.339
Conductivity (S/m)	0.981
E-Field Probe	SN 18/11 EPG123
Crest factor	2.0
Conversion Factor	7.75
Sensor-Surface	4mm
Area Scan	dx=8mm dy=8mm
Zoom Scan	5x5x7, dx=8mm dy=8mm dz=5mm
Variation (%)	2.78000
SAR 10g (W/Kg)	0.657349
SAR 1g (W/Kg)	0.865750

**SURFACE SAR**

**VOLUME SAR**

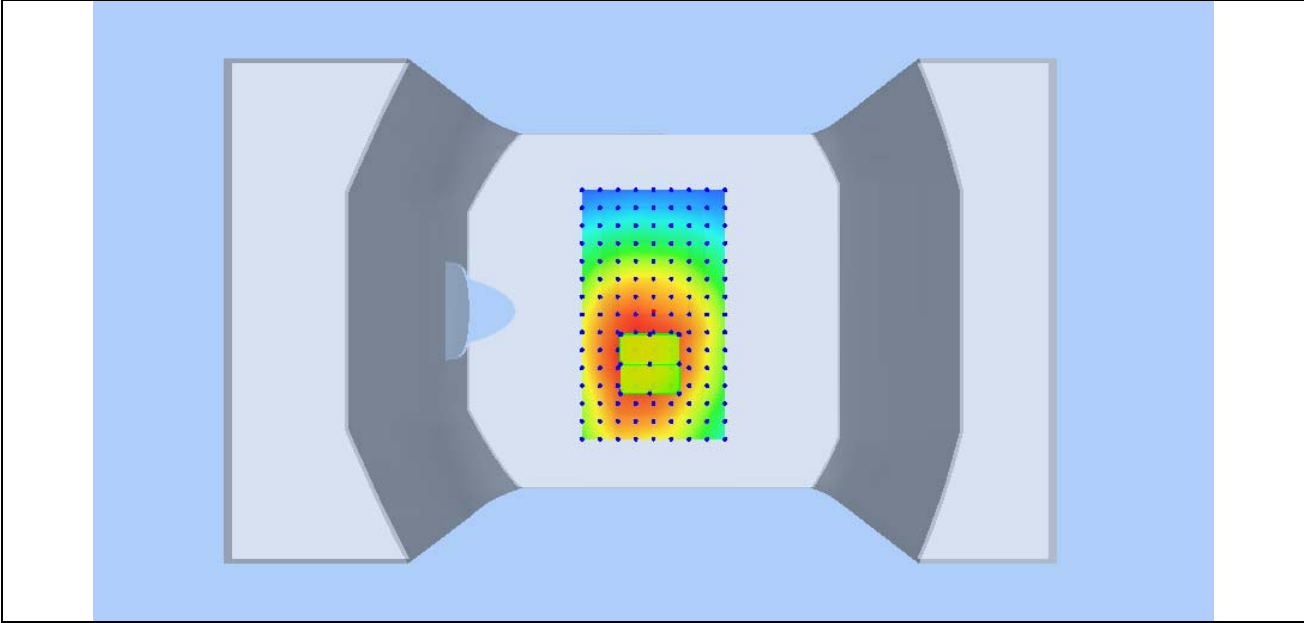
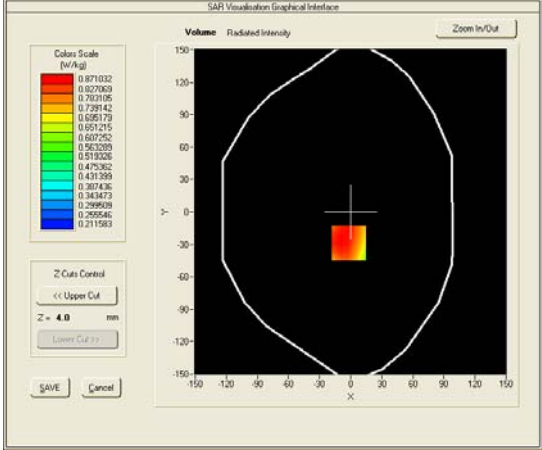
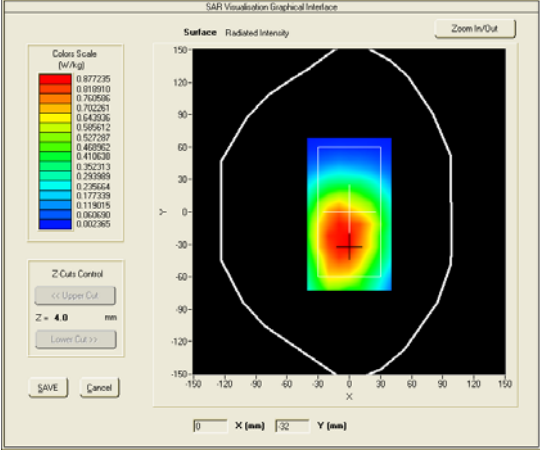


Test mode: GPRS850, Middle channel (Body-LCD DOWN, edge back), repeated measured  
 Product Description: GSM/WCDMA MOBILE PHONE  
 Model: M4 SS1090  
 Test Date: May 25th, 2013

Medium(liquid type)	MSL_850
Frequency (MHz)	836.6000
Relative permittivity (real part)	53.339
Conductivity (S/m)	0.981
E-Field Probe	SN 18/11 EPG123
Crest factor	2.0
Conversion Factor	7.75
Sensor-Surface	4mm
Area Scan	dx=8mm dy=8mm
Zoom Scan	5x5x7, dx=8mm dy=8mm dz=5mm
Variation (%)	0.43000
SAR 10g (W/Kg)	0.647239
SAR 1g (W/Kg)	0.867349

**SURFACE SAR**

**VOLUME SAR**



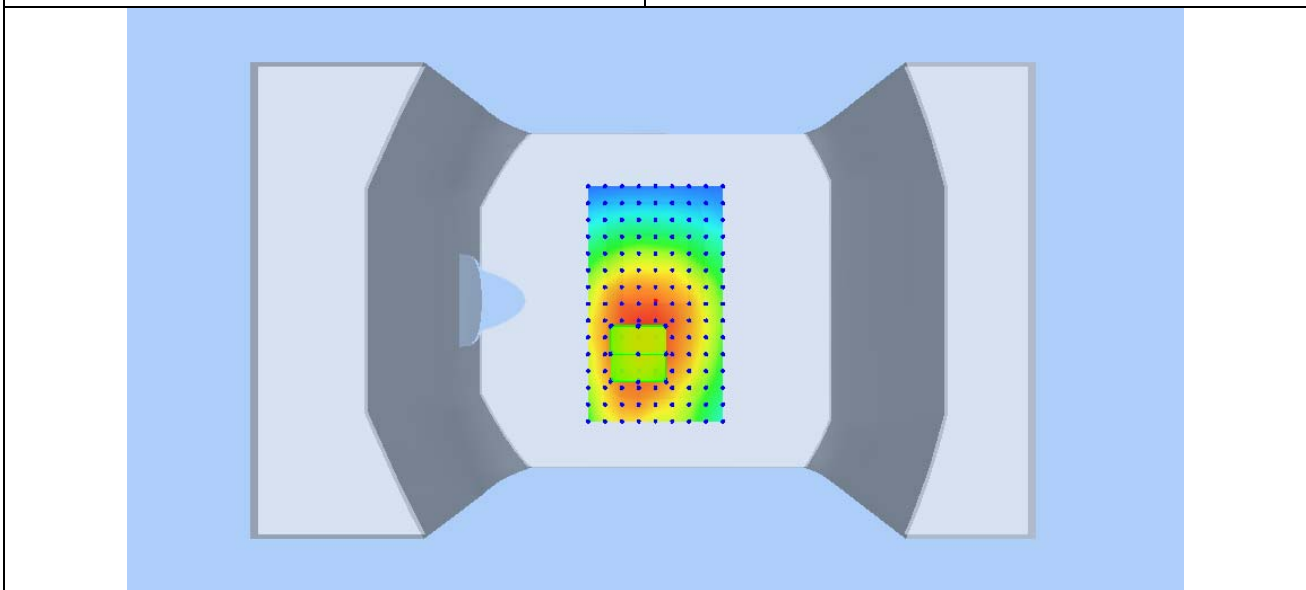
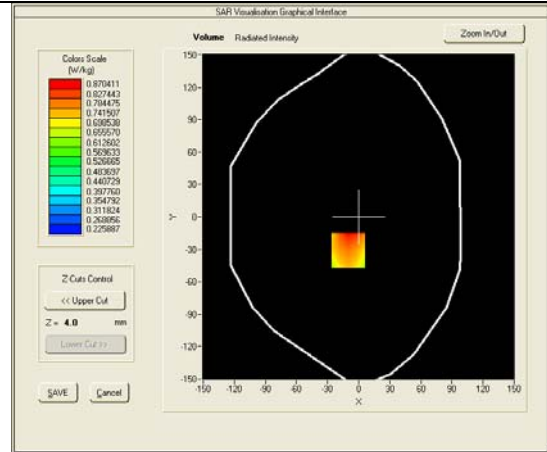
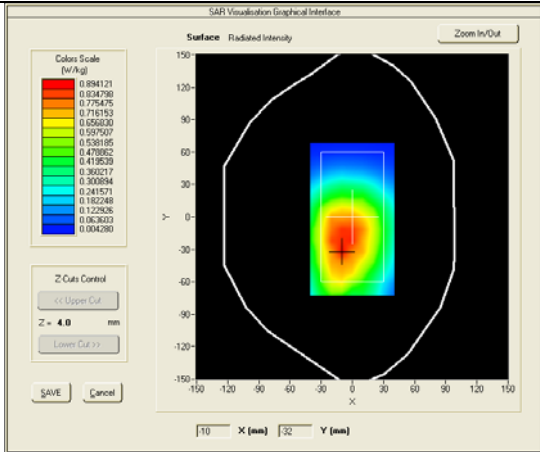


Test mode: GPRS850, high channel (Body-LCD DOWN, edge back)  
 Product Description: GSM/WCDMA MOBILE PHONE  
 Model: M4 SS1090  
 Test Date: May 25th, 2013

Medium(liquid type)	MSL_850
Frequency (MHz)	848.8000
Relative permittivity (real part)	53.339
Conductivity (S/m)	0.981
E-Field Probe	SN 18/11 EPG123
Crest factor	2.0
Conversion Factor	7.75
Sensor-Surface	4mm
Area Scan	dx=8mm dy=8mm
Zoom Scan	5x5x7, dx=8mm dy=8mm dz=5mm
Variation (%)	-0.38000
SAR 10g (W/Kg)	0.617999
SAR 1g (W/Kg)	0.833861

**SURFACE SAR**

**VOLUME SAR**

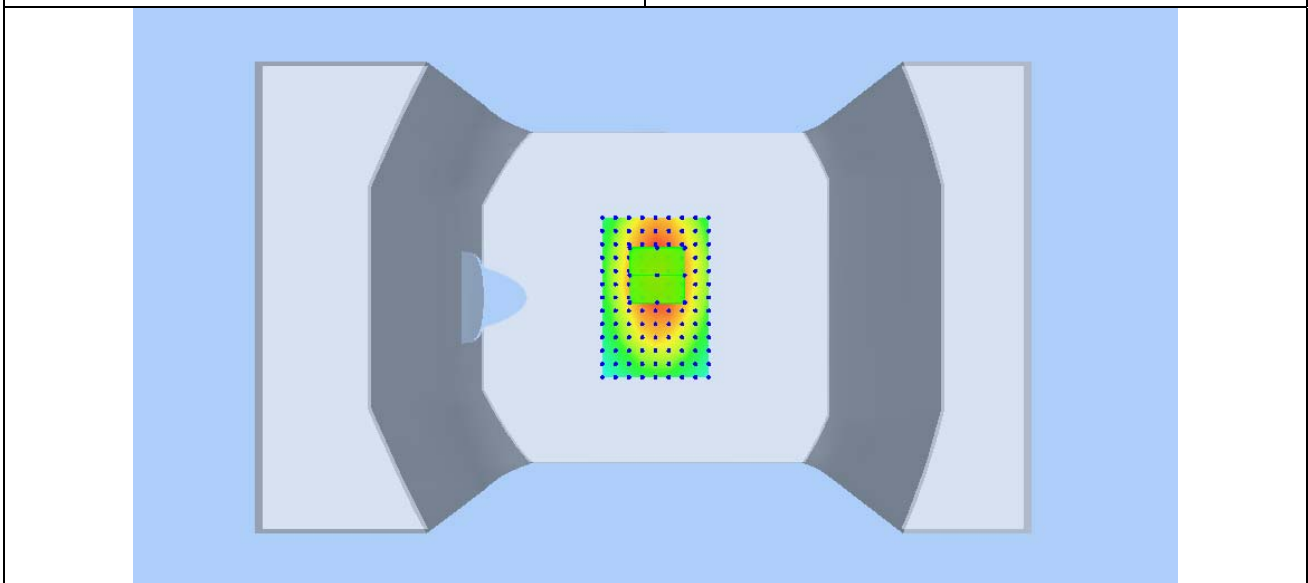
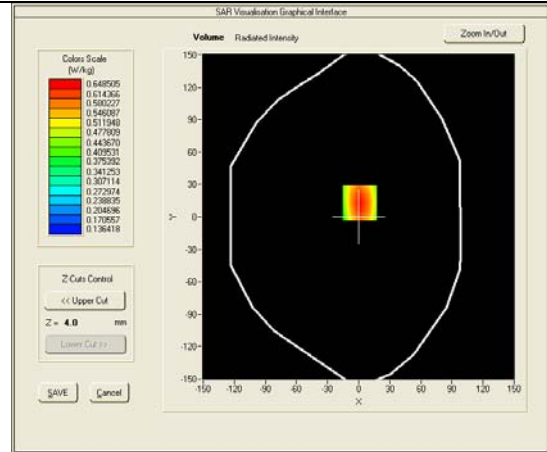
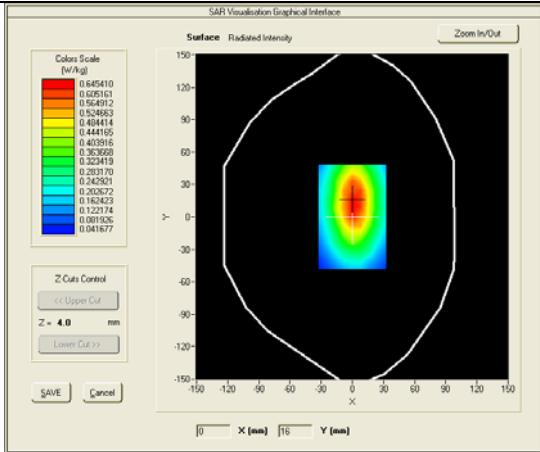


Test mode: GPRS850, Middle channel (Body- edge right)  
 Product Description: GSM/WCDMA MOBILE PHONE  
 Model: M4 SS1090  
 Test Date: May 25th, 2013

Medium(liquid type)	MSL_850
Frequency (MHz)	836.6000
Relative permittivity (real part)	53.339
Conductivity (S/m)	0.981
E-Field Probe	SN 18/11 EPG123
Crest factor	2.0
Conversion Factor	7.75
Sensor-Surface	4mm
Area Scan	dx=8mm dy=8mm
Zoom Scan	5x5x7, dx=8mm dy=8mm dz=5mm
Variation (%)	-3.32000
SAR 10g (W/Kg)	0.424948
SAR 1g (W/Kg)	0.628299

**SURFACE SAR**

**VOLUME SAR**

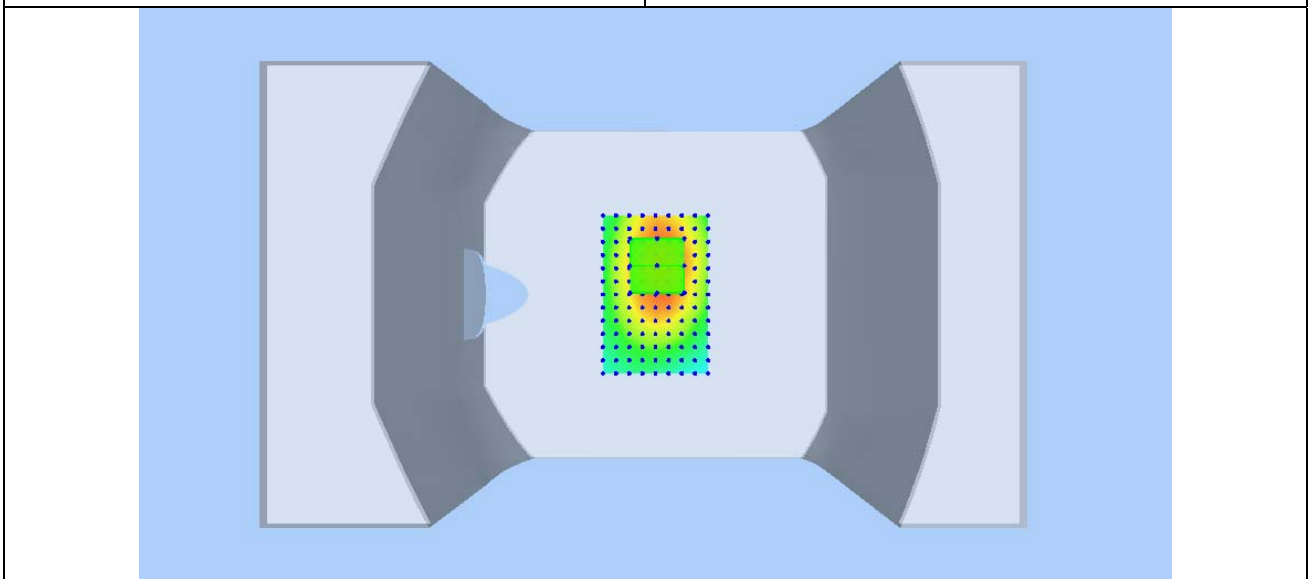
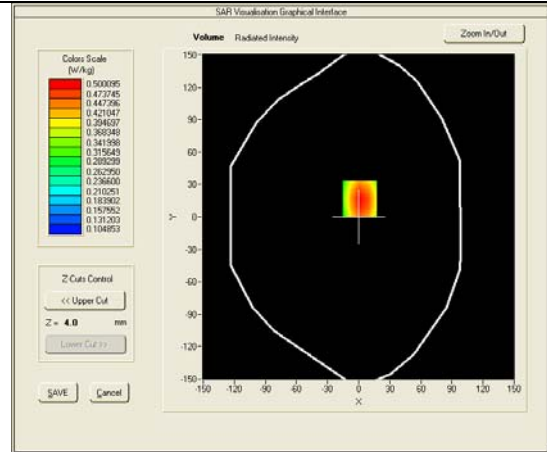
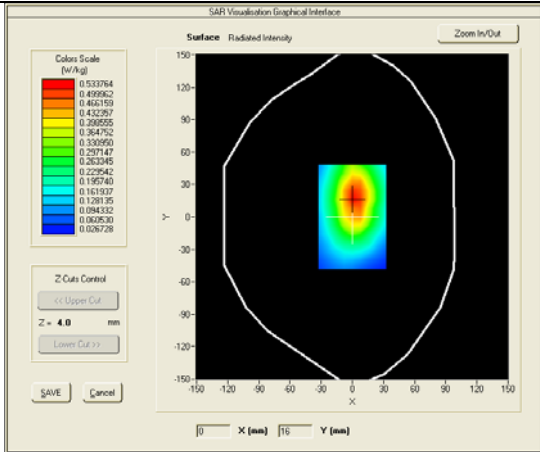


Test mode: GPRS850, Middle channel (Body-edge left)  
 Product Description: GSM/WCDMA MOBILE PHONE  
 Model: M4 SS1090  
 Test Date: May 25th, 2013

Medium(liquid type)	MSL_850
Frequency (MHz)	836.6000
Relative permittivity (real part)	53.339
Conductivity (S/m)	0.981
E-Field Probe	SN 18/11 EPG123
Crest factor	2.0
Conversion Factor	7.75
Sensor-Surface	4mm
Area Scan	dx=8mm dy=8mm
Zoom Scan	5x5x7, dx=8mm dy=8mm dz=5mm
Variation (%)	-2.07000
SAR 10g (W/Kg)	0.337113
SAR 1g (W/Kg)	0.485830

**SURFACE SAR**

**VOLUME SAR**

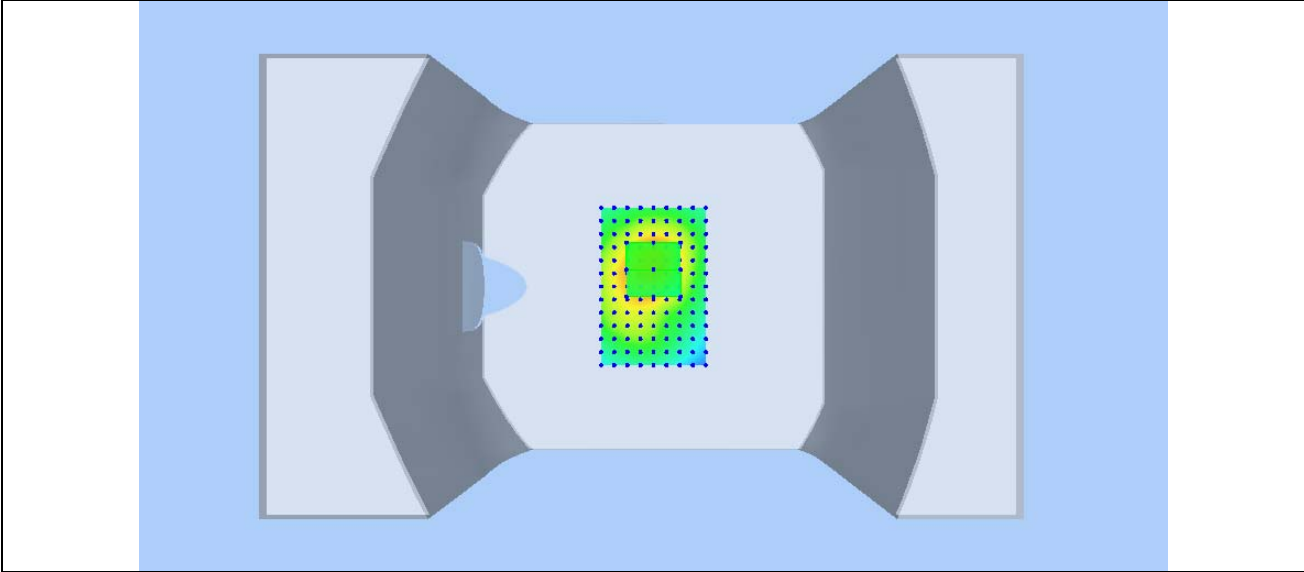
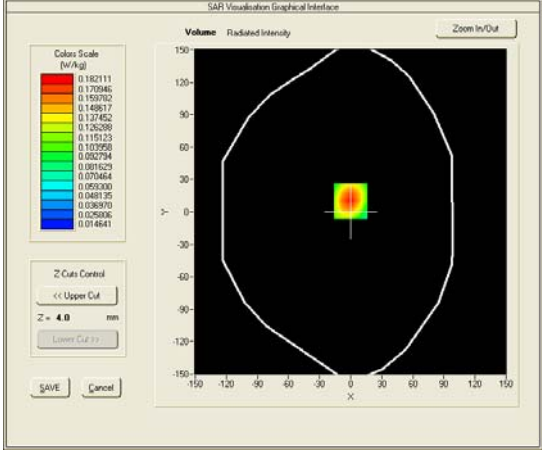
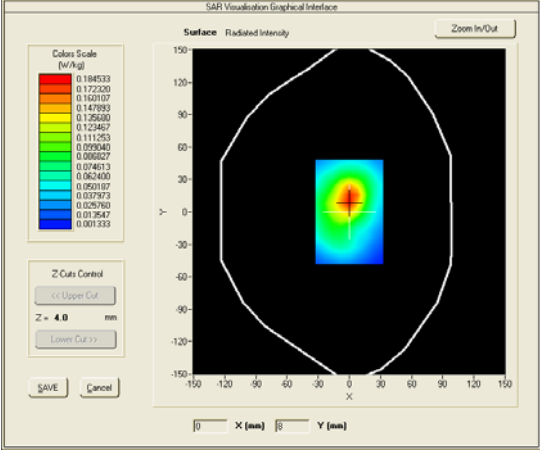


Test mode: GPRS850, Middle channel (Body-edge bottom)  
 Product Description: GSM/WCDMA MOBILE PHONE  
 Model: M4 SS1090  
 Test Date: May 25th, 2013

Medium(liquid type)	MSL_850
Frequency (MHz)	836.6000
Relative permittivity (real part)	53.339
Conductivity (S/m)	0.981
E-Field Probe	SN 18/11 EPG123
Crest factor	2.0
Conversion Factor	7.75
Sensor-Surface	4mm
Area Scan	dx=8mm dy=8mm
Zoom Scan	5x5x7, dx=8mm dy=8mm dz=5mm
Variation (%)	1.52000
SAR 10g (W/Kg)	0.108249
SAR 1g (W/Kg)	0.174223

**SURFACE SAR**

**VOLUME SAR**

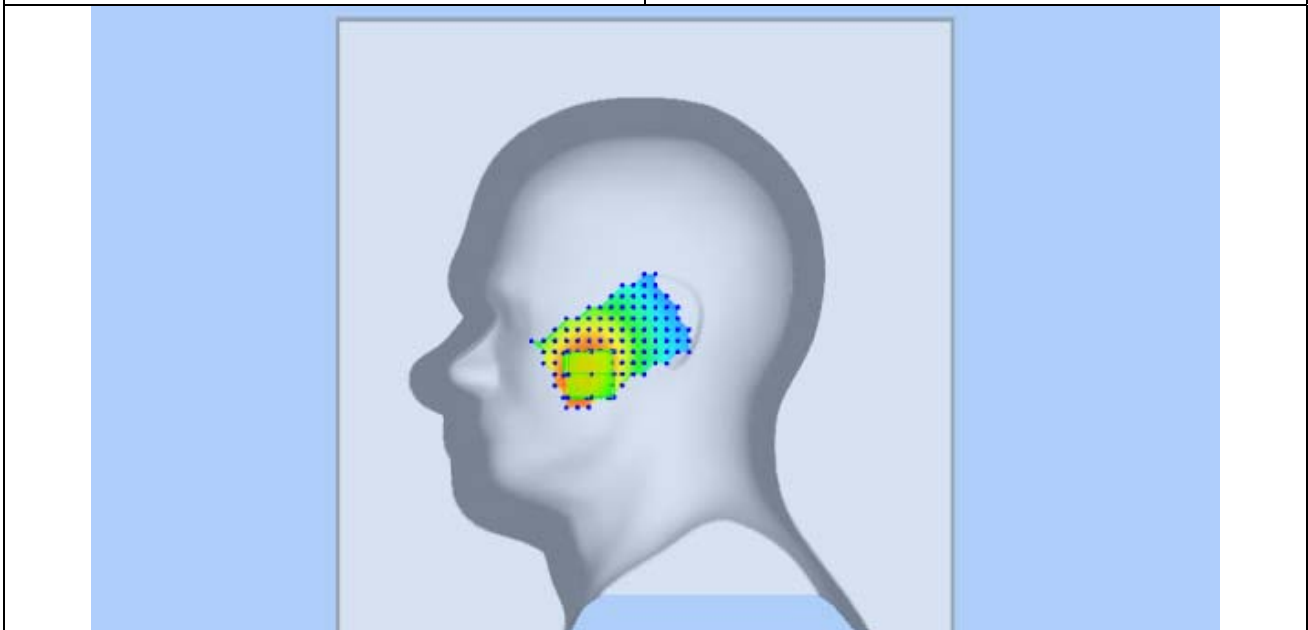
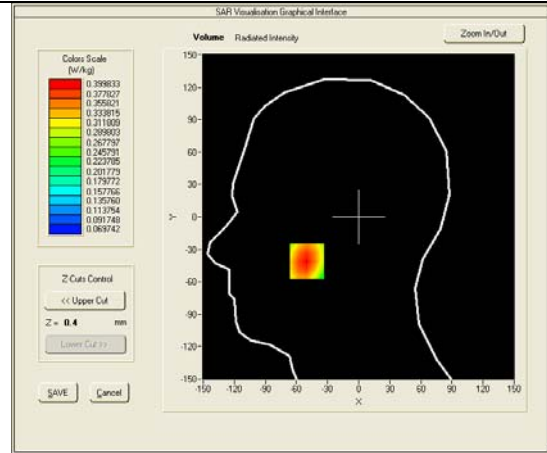
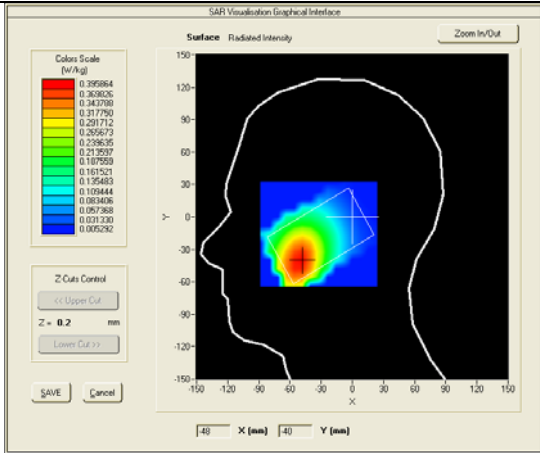


Test mode: WCDMA BAND V , middle channel (Right Head Cheek)  
 Product Description: GSM/WCDMA MOBILE PHONE  
 Model: M4 SS1090  
 Test Date: May 25th, 2013

Medium(liquid type)	HSL_850
Frequency (MHz)	835.0000
Relative permittivity (real part)	40.777
Conductivity (S/m)	0.899
E-Field Probe	SN 18/11 EPG123
Crest factor	1.0
Conversion Factor	8.78
Sensor-Surface	4mm
Area Scan	dx=8mm dy=8mm
Zoom Scan	5x5x7, dx=8mm dy=8mm dz=5mm
Variation (%)	0.05000
SAR 10g (W/Kg)	0.287764
SAR 1g (W/Kg)	0.385257

**SURFACE SAR**

**VOLUME SAR**

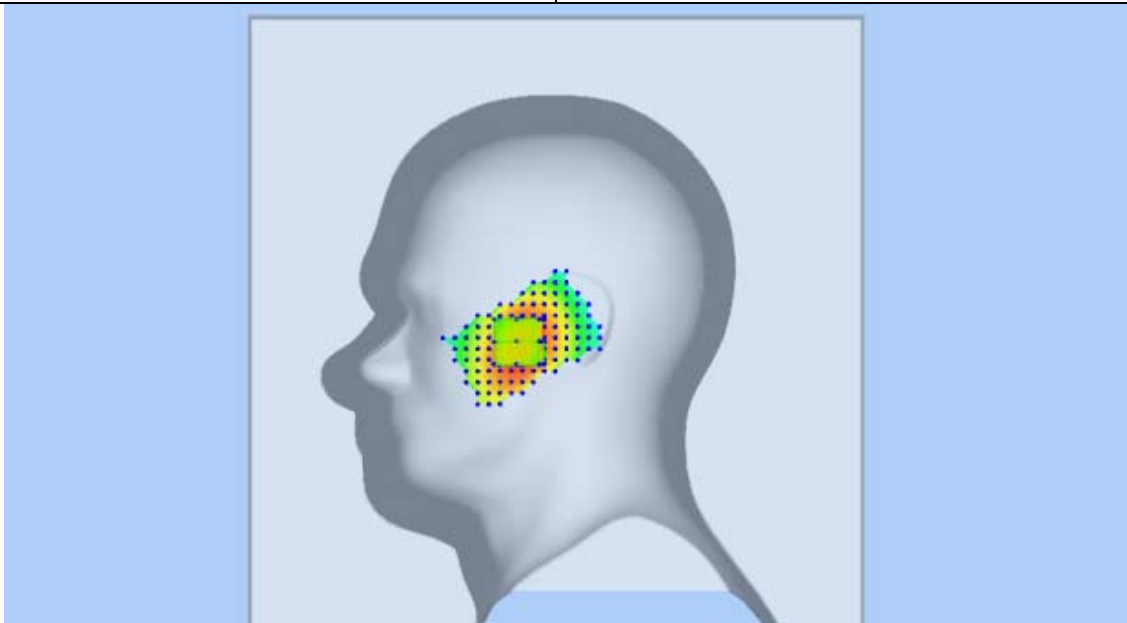
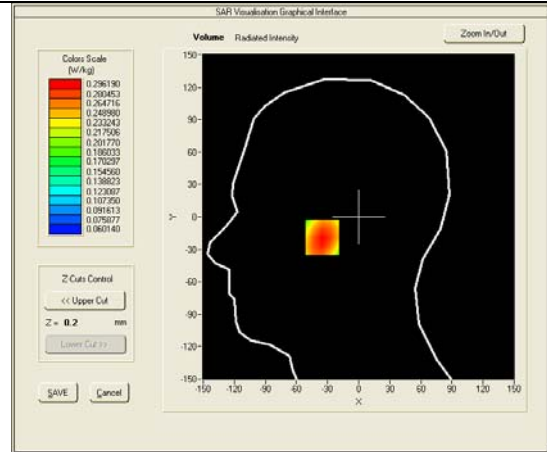
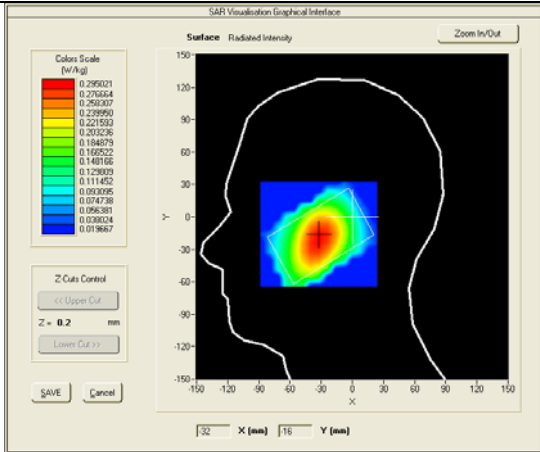


Test mode: WCDMA BAND V , middle channel (Right Head Tilt)  
 Product Description: GSM/WCDMA MOBILE PHONE  
 Model: M4 SS1090  
 Test Date: May 25th, 2013

Medium(liquid type)	HSL_850
Frequency (MHz)	835.0000
Relative permittivity (real part)	40.777
Conductivity (S/m)	0.899
E-Field Probe	SN 18/11 EPG123
Crest factor	1.0
Conversion Factor	8.78
Sensor-Surface	4mm
Area Scan	dx=8mm dy=8mm
Zoom Scan	5x5x7,dx=8mm dy=8mm dz=5mm
Variation (%)	0.11000
SAR 10g (W/Kg)	0.216921
SAR 1g (W/Kg)	0.286414

**SURFACE SAR**

**VOLUME SAR**

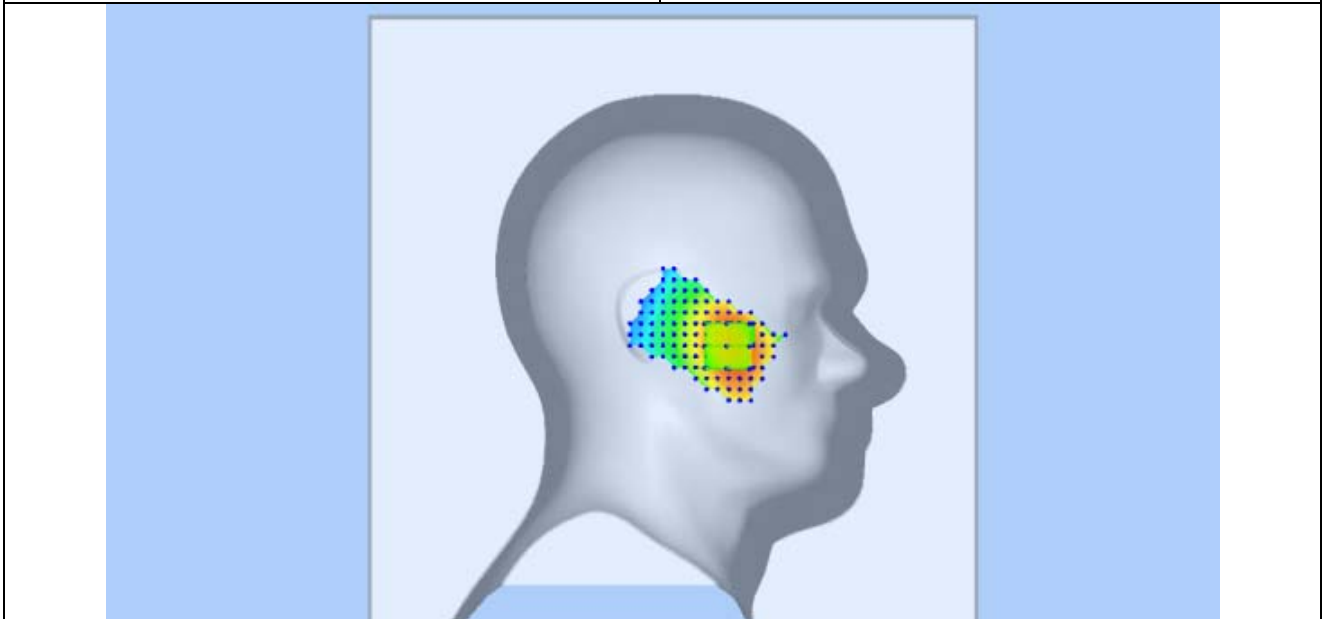
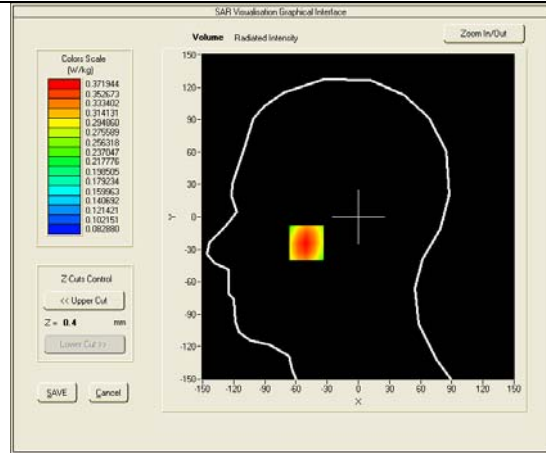
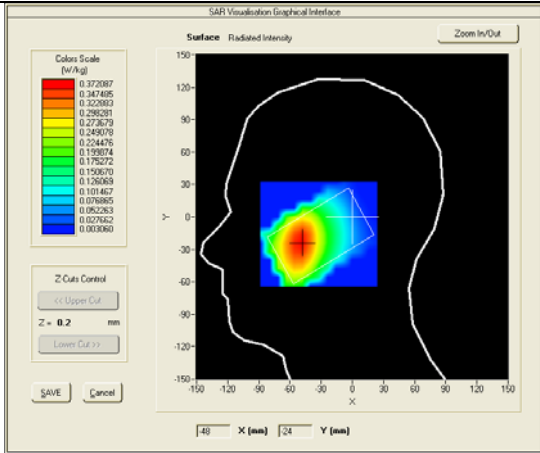


Test mode: WCDMA BAND V , middle channel (Left Head Cheek)  
 Product Description: GSM/WCDMA MOBILE PHONE  
 Model: M4 SS1090  
 Test Date: May 25th, 2013

Medium(liquid type)	HSL_850
Frequency (MHz)	835.0000
Relative permittivity (real part)	40.777
Conductivity (S/m)	0.899
E-Field Probe	SN 18/11 EPG123
Crest factor	1.0
Conversion Factor	8.78
Sensor-Surface	4mm
Area Scan	dx=8mm dy=8mm
Zoom Scan	5x5x7,dx=8mm dy=8mm dz=5mm
Variation (%)	0.09000
SAR 10g (W/Kg)	0.268860
SAR 1g (W/Kg)	0.358212

**SURFACE SAR**

**VOLUME SAR**

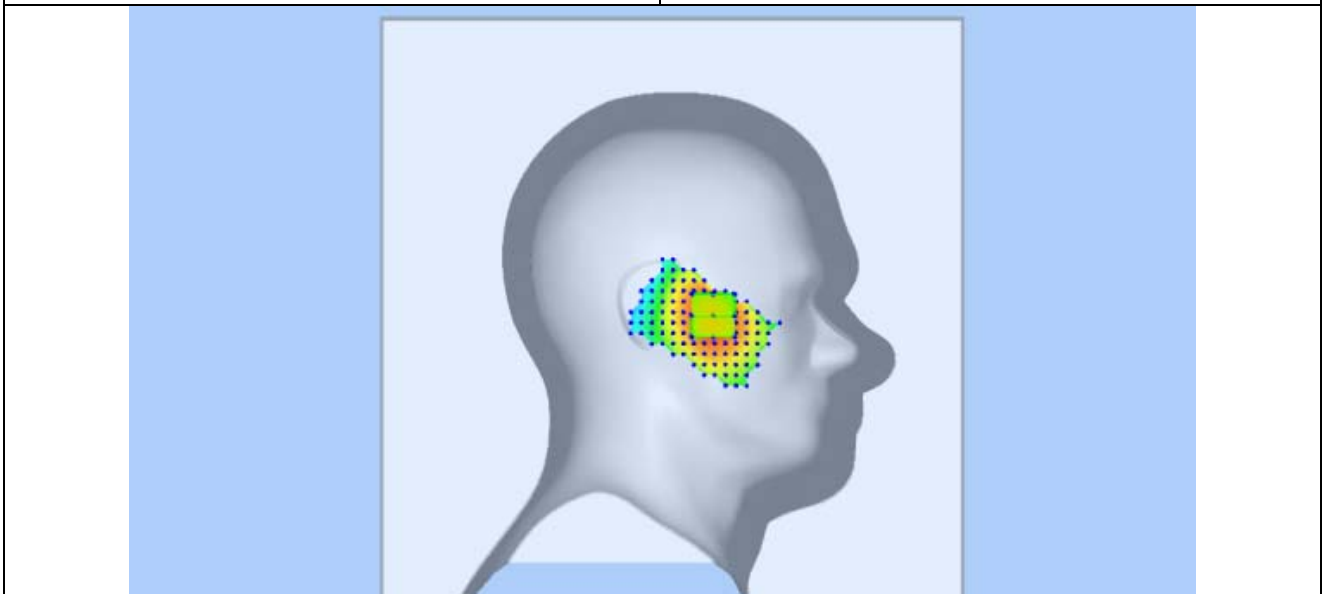
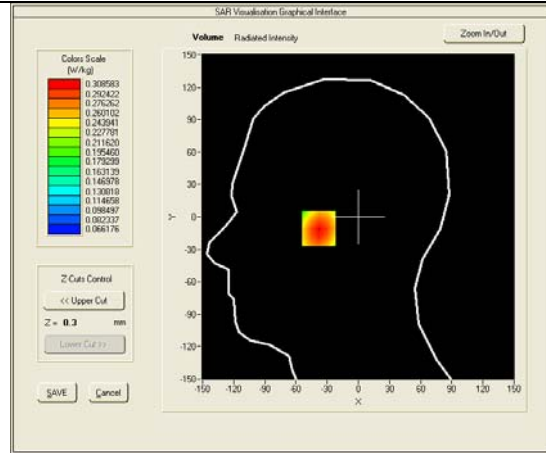
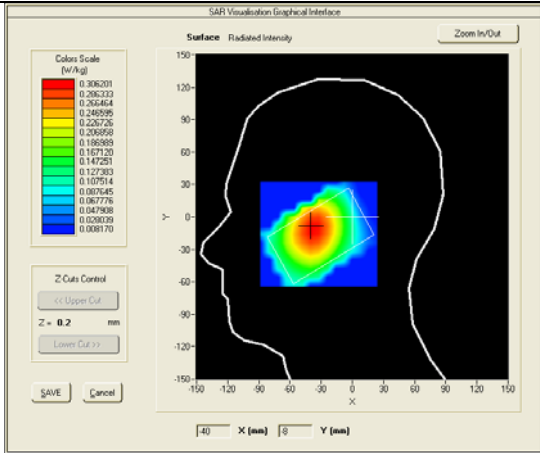


Test mode: WCDMA BAND V , middle channel (Left Head Tilt)  
 Product Description: GSM/WCDMA MOBILE PHONE  
 Model: M4 SS1090  
 Test Date: May 25th, 2013

Medium(liquid type)	HSL_850
Frequency (MHz)	835.0000
Relative permittivity (real part)	40.777
Conductivity (S/m)	0.899
E-Field Probe	SN 18/11 EPG123
Crest factor	1.0
Conversion Factor	8.78
Sensor-Surface	4mm
Area Scan	dx=8mm dy=8mm
Zoom Scan	5x5x7,dx=8mm dy=8mm dz=5mm
Variation (%)	-0.62000
SAR 10g (W/Kg)	0.226397
SAR 1g (W/Kg)	0.298163

**SURFACE SAR**

**VOLUME SAR**



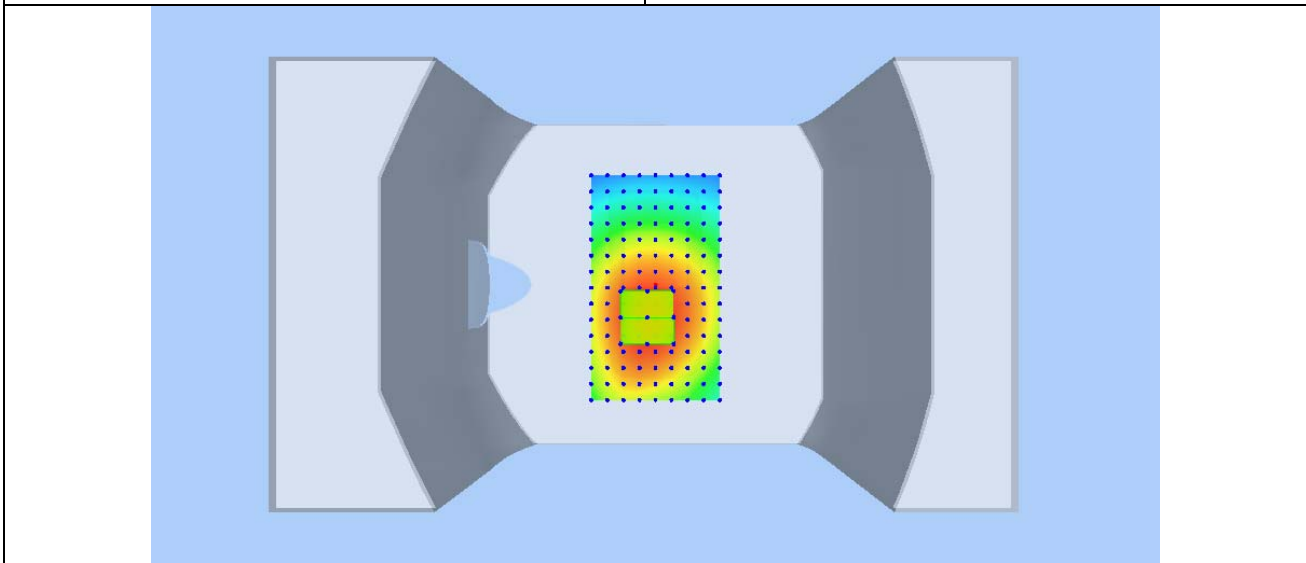
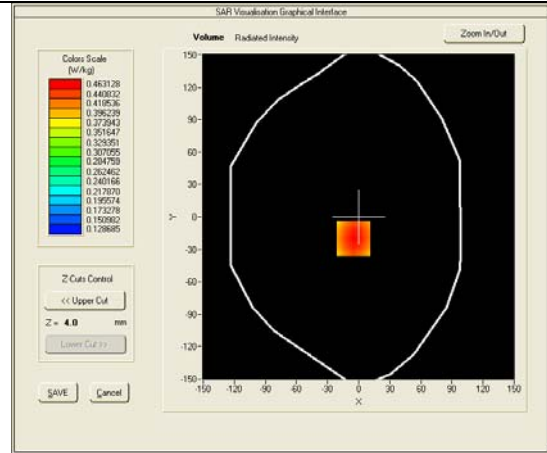
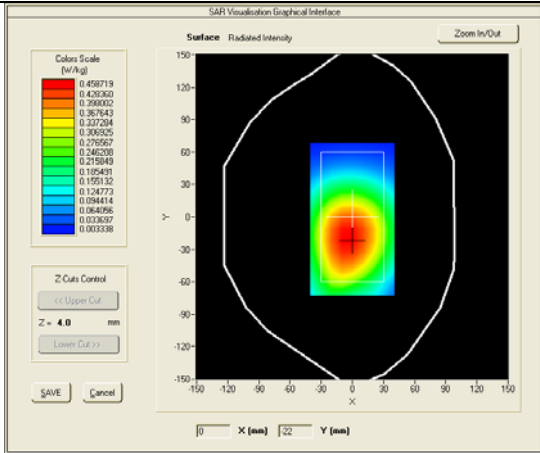


Test mode: WCDMA BAND V , middle channel (Body-LCD UP, edge front)  
 Product Description: GSM/WCDMA MOBILE PHONE  
 Model: M4 SS1090  
 Test Date: May 25th, 2013

Medium(liquid type)	MSL_850
Frequency (MHz)	835.0000
Relative permittivity (real part)	53.339
Conductivity (S/m)	0.981
E-Field Probe	SN 18/11 EPG123
Crest factor	1.0
Conversion Factor	9.07
Sensor-Surface	4mm
Area Scan	dx=8mm dy=8mm
Zoom Scan	5x5x7, dx=8mm dy=8mm dz=5mm
Variation (%)	-0.22000
SAR 10g (W/Kg)	0.364716
SAR 1g (W/Kg)	0.483062

**SURFACE SAR**

**VOLUME SAR**



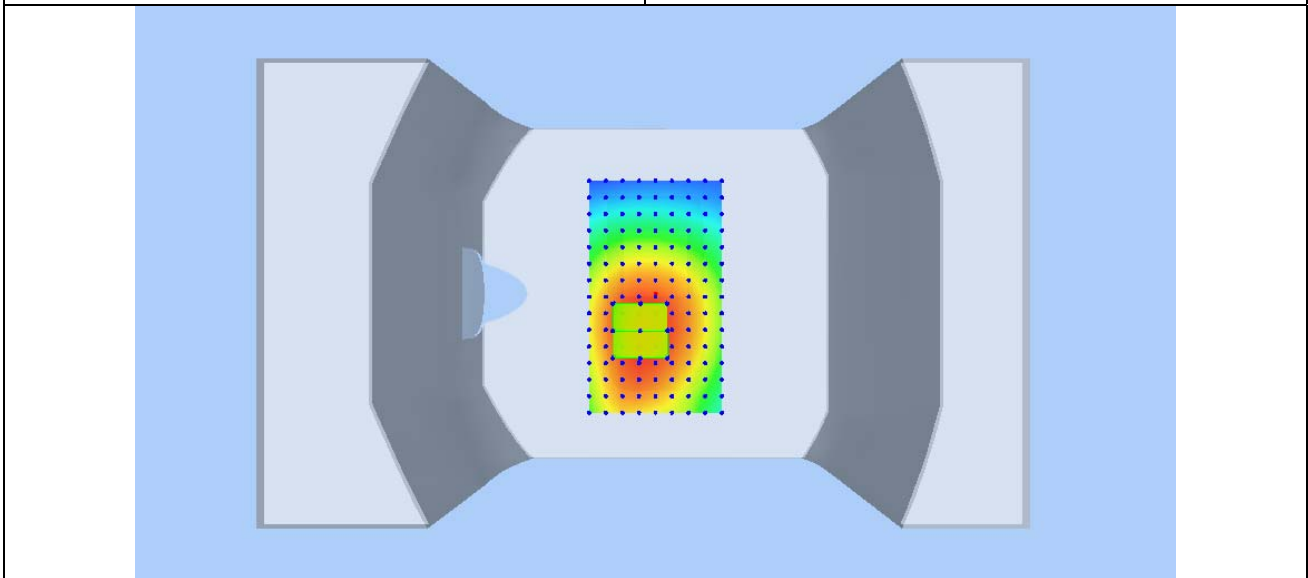
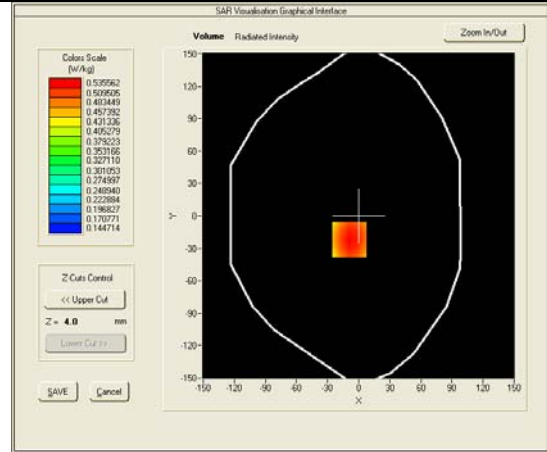
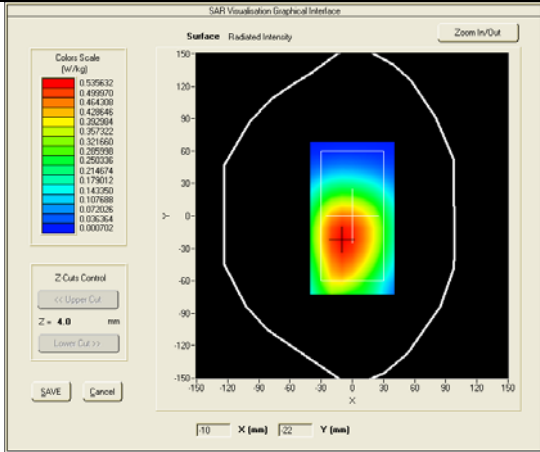
Test mode: WCDMA BAND V , middle channel (Body-LCD DOWN, edge back)

Product Description: GSM/WCDMA MOBILE PHONE

Model: M4 SS1090

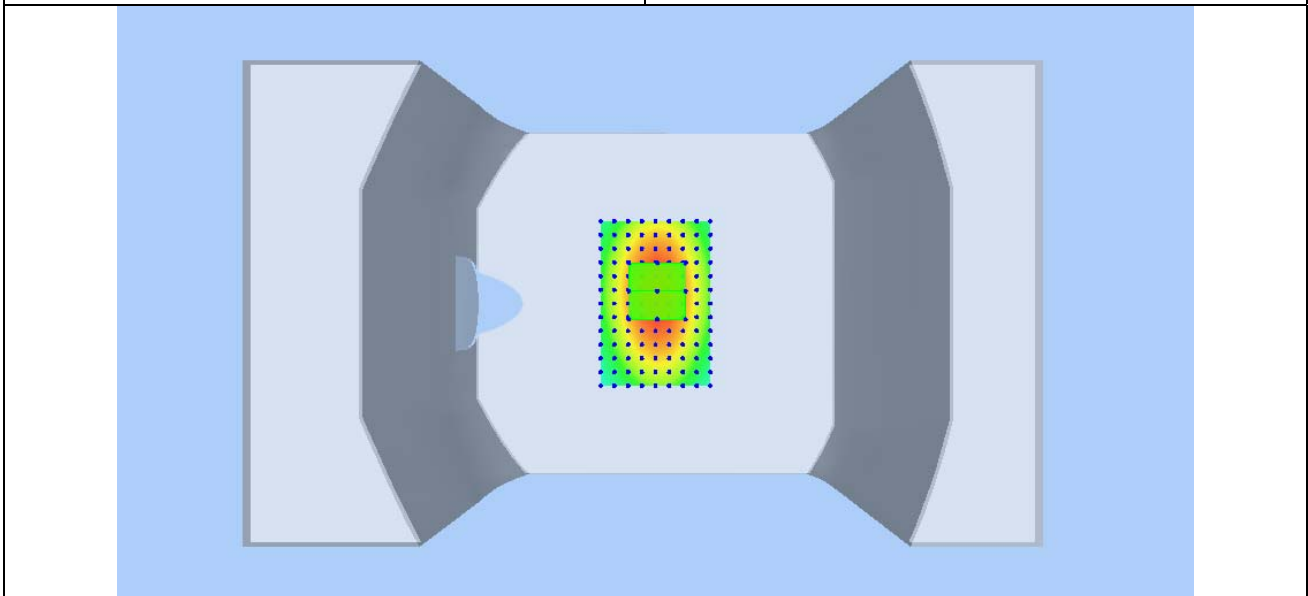
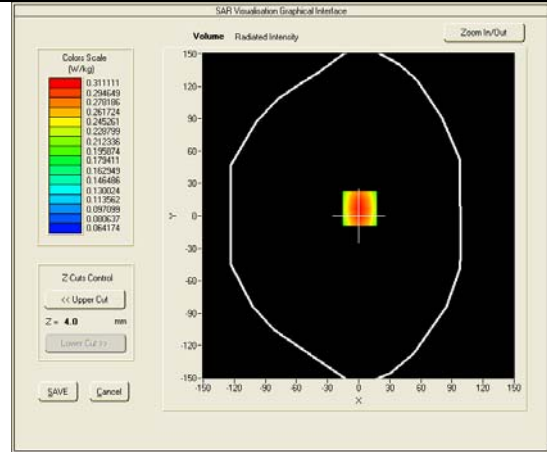
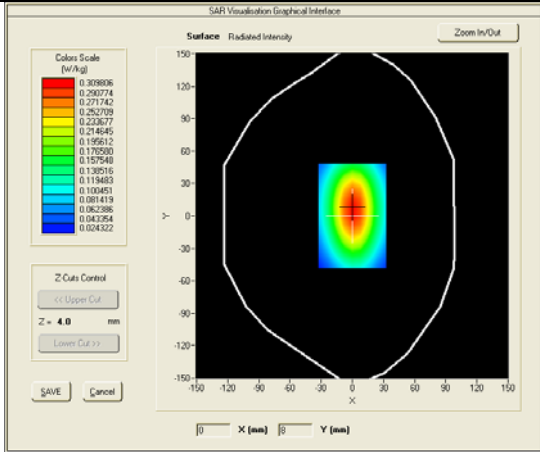
Test Date: May 25th, 2013

Medium(liquid type)	MSL_850
Frequency (MHz)	835.0000
Relative permittivity (real part)	53.339
Conductivity (S/m)	0.981
E-Field Probe	SN 18/11 EPG123
Crest factor	1.0
Conversion Factor	9.07
Sensor-Surface	4mm
Area Scan	dx=8mm dy=8mm
Zoom Scan	5x5x7,dx=8mm dy=8mm dz=5mm
Variation (%)	-0.26000
SAR 10g (W/Kg)	0.425459
SAR 1g (W/Kg)	0.559519
<b>SURFACE SAR</b>	<b>VOLUME SAR</b>



Test mode: WCDMA BAND V , middle channel (Body, edge right)  
 Product Description: GSM/WCDMA MOBILE PHONE  
 Model: M4 SS1090  
 Test Date: May 25th, 2013

Medium(liquid type)	MSL_850
Frequency (MHz)	835.0000
Relative permittivity (real part)	53.339
Conductivity (S/m)	0.981
E-Field Probe	SN 18/11 EPG123
Crest factor	1.0
Conversion Factor	9.07
Sensor-Surface	4mm
Area Scan	dx=8mm dy=8mm
Zoom Scan	5x5x7,dx=8mm dy=8mm dz=5mm
Variation (%)	0.22000
SAR 10g (W/Kg)	0.220270
SAR 1g (W/Kg)	0.320277
<b>SURFACE SAR</b>	<b>VOLUME SAR</b>

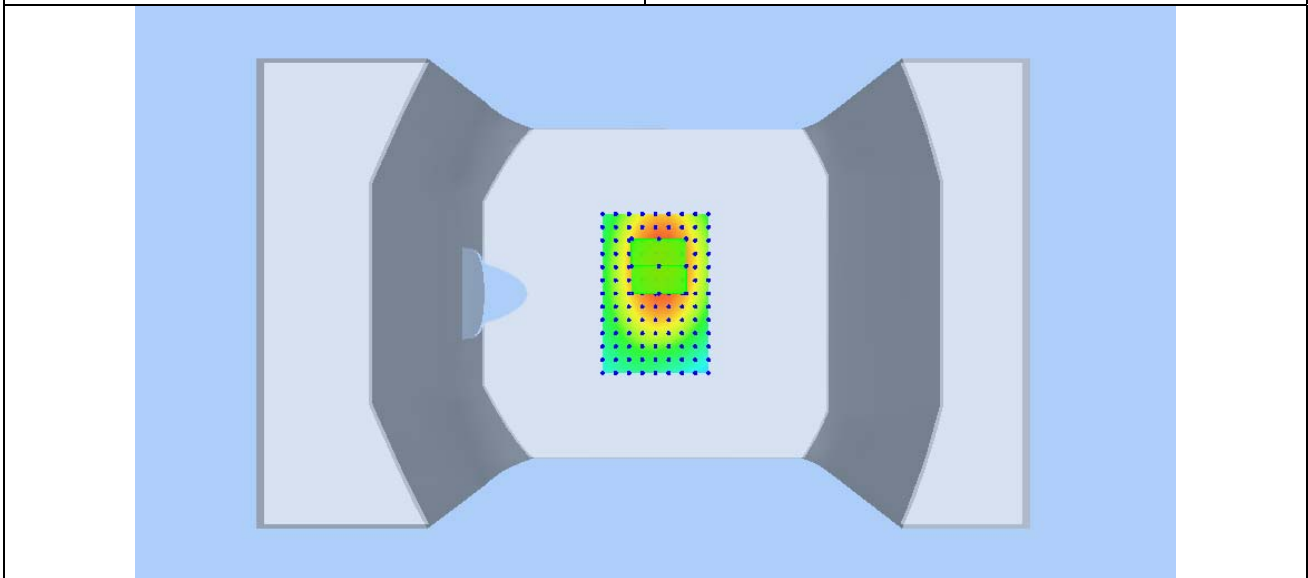
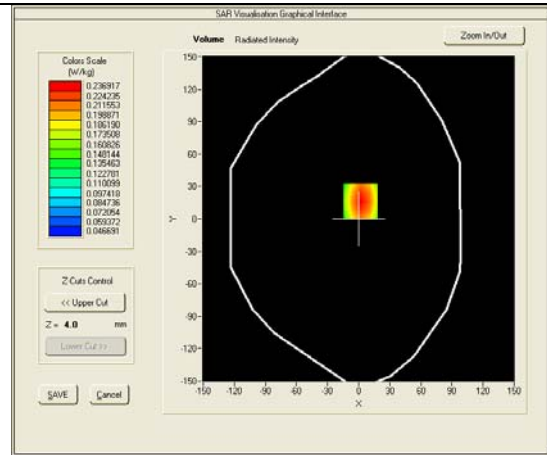
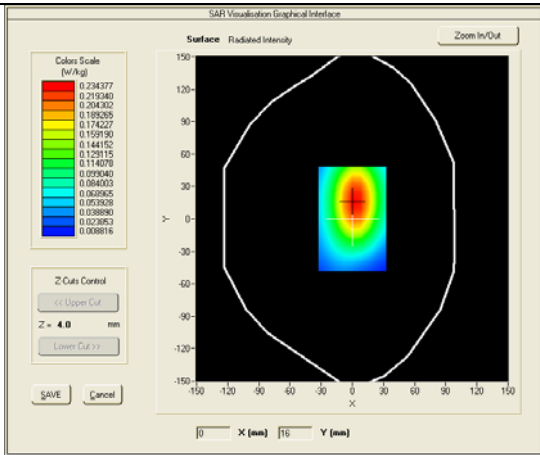


Test mode: WCDMA BAND V , middle channel (Body, edge left)  
 Product Description: GSM/WCDMA MOBILE PHONE  
 Model: M4 SS1090  
 Test Date: May 25th, 2013

Medium(liquid type)	MSL_850
Frequency (MHz)	835.0000
Relative permittivity (real part)	53.339
Conductivity (S/m)	0.981
E-Field Probe	SN 18/11 EPG123
Crest factor	1.0
Conversion Factor	9.07
Sensor-Surface	4mm
Area Scan	dx=8mm dy=8mm
Zoom Scan	5x5x7,dx=8mm dy=8mm dz=5mm
Variation (%)	-0.05000
SAR 10g (W/Kg)	0.166379
SAR 1g (W/Kg)	0.243856

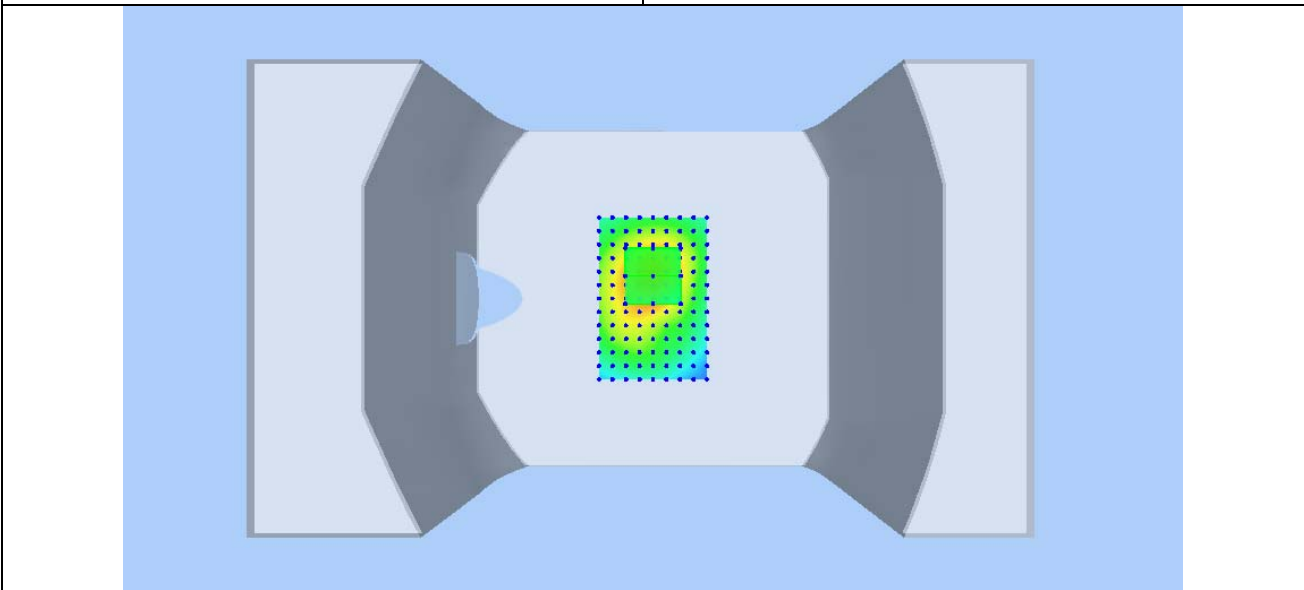
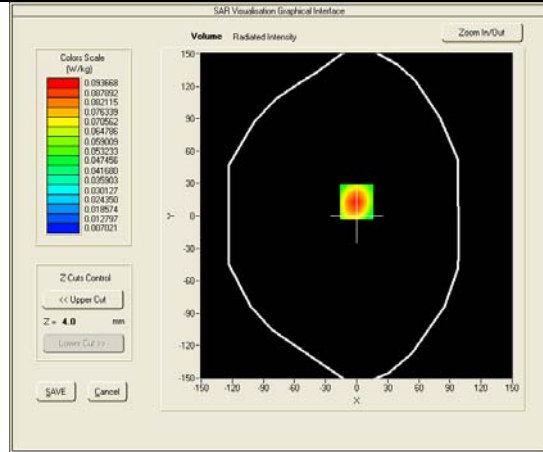
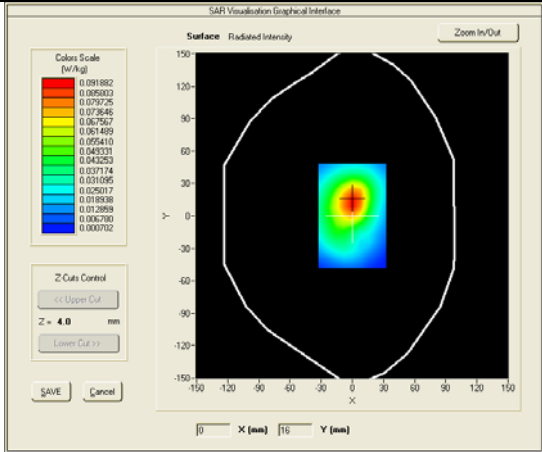
**SURFACE SAR**

**VOLUME SAR**



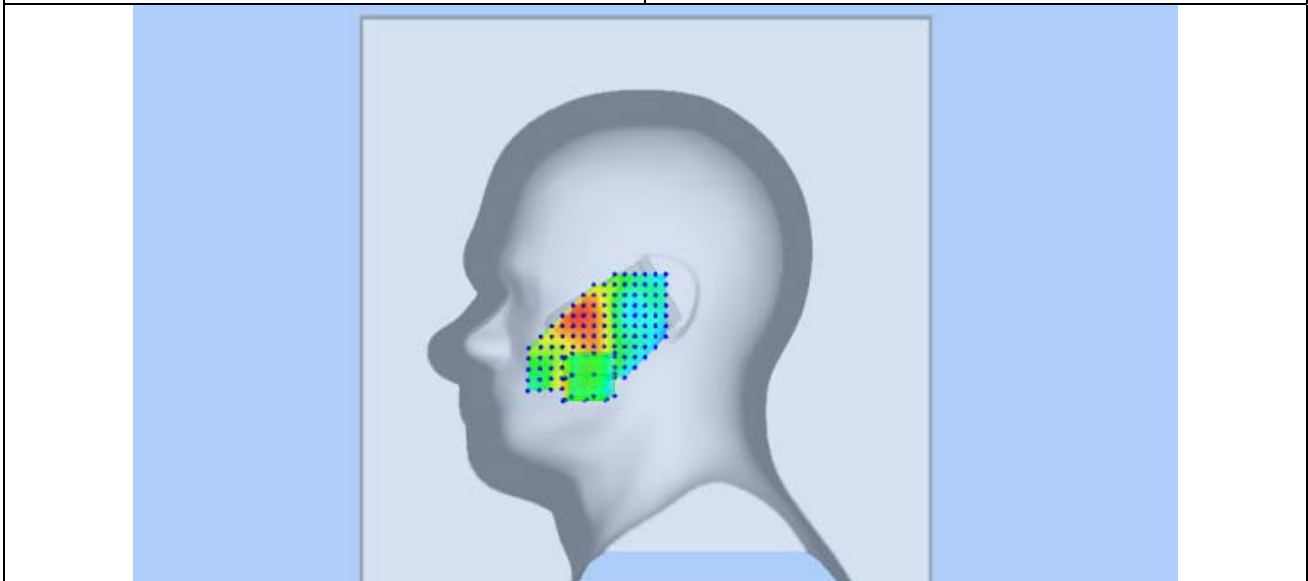
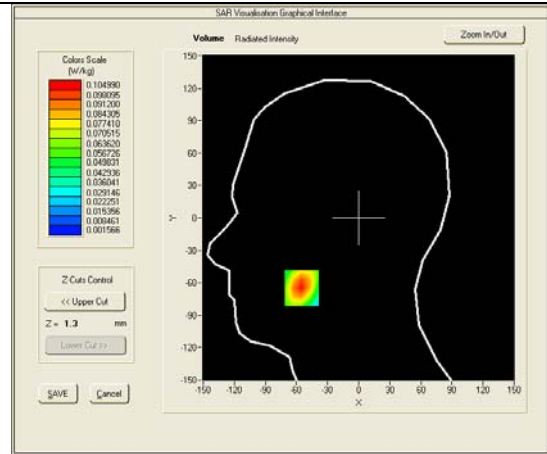
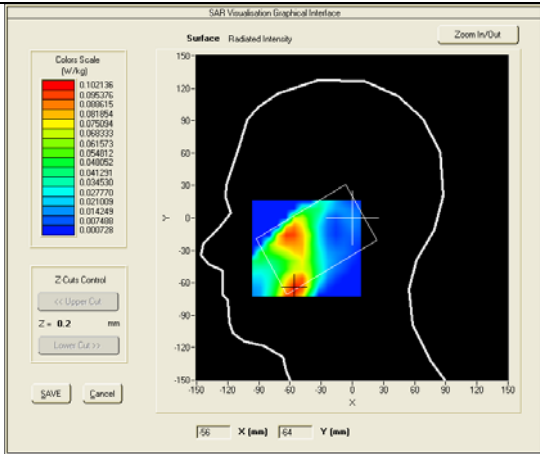
Test mode: WCDMA BAND V , middle channel (Body, edge bottom)  
 Product Description: GSM/WCDMA MOBILE PHONE  
 Model: M4 SS1090  
 Test Date: May 25th, 2013

Medium(liquid type)	MSL_850
Frequency (MHz)	835.0000
Relative permittivity (real part)	53.339
Conductivity (S/m)	0.981
E-Field Probe	SN 18/11 EPG123
Crest factor	1.0
Conversion Factor	9.07
Sensor-Surface	4mm
Area Scan	dx=8mm dy=8mm
Zoom Scan	5x5x7,dx=8mm dy=8mm dz=5mm
Variation (%)	0.03000
SAR 10g (W/Kg)	0.058838
SAR 1g (W/Kg)	0.095142
<b>SURFACE SAR</b>	<b>VOLUME SAR</b>



Test mode: GSM1900, Middle channel (Right Head Cheek)  
 Product Description: GSM/WCDMA MOBILE PHONE  
 Model: M4 SS1090  
 Test Date: May 26th, 2013

Medium(liquid type)	HSL_1900
Frequency (MHz)	1880.0000
Relative permittivity (real part)	41.115
Conductivity (S/m)	1.389
E-Field Probe	SN 18/11 EPG123
Crest factor	8.0
Conversion Factor	7.92
Sensor-Surface	4mm
Area Scan	dx=8mm dy=8mm
Zoom Scan	5x5x7,dx=8mm dy=8mm dz=5mm
Variation (%)	-1.14000
SAR 10g (W/Kg)	0.058493
SAR 1g (W/Kg)	0.098515
<b>SURFACE SAR</b>	<b>VOLUME SAR</b>

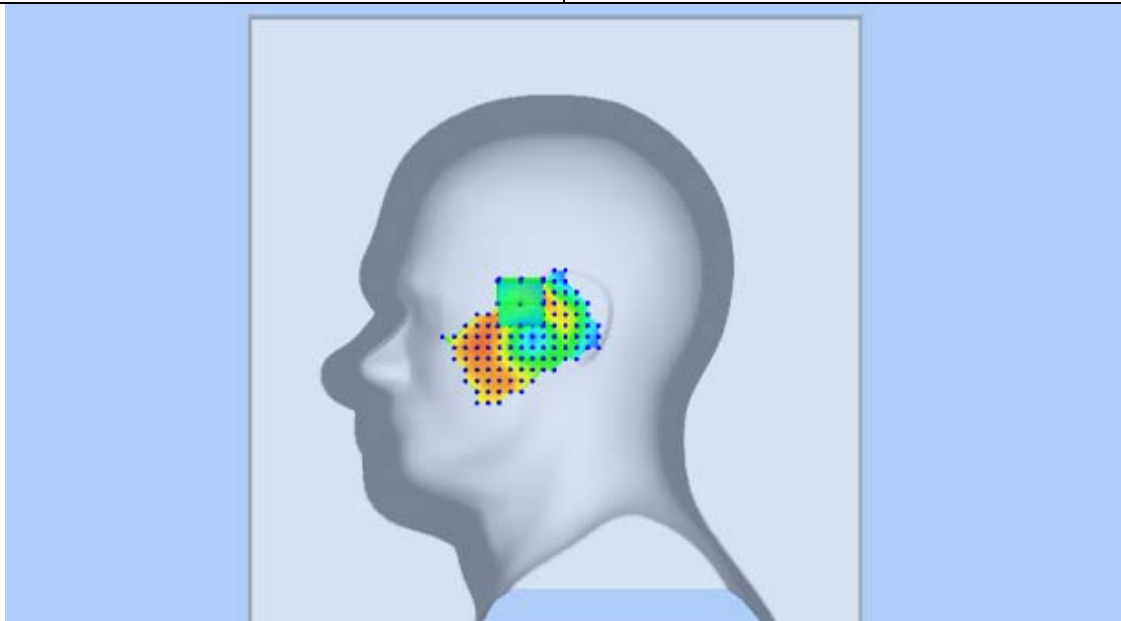
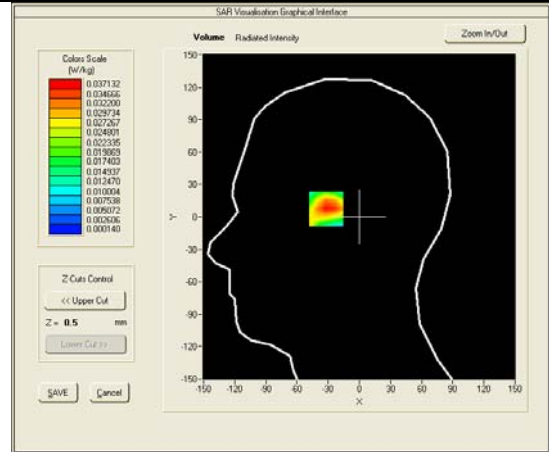
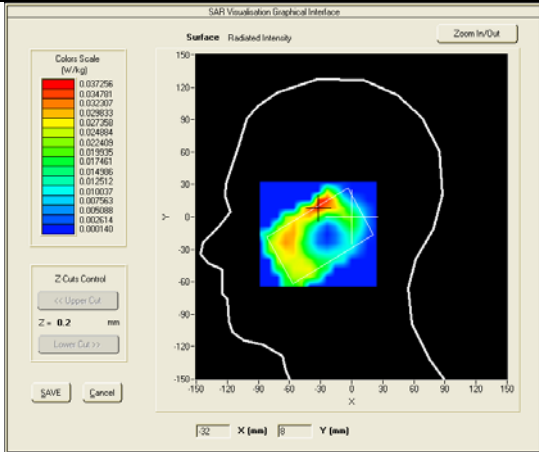


Test mode: GSM1900, Middle channel (Right Head Tilt)  
 Product Description: GSM/WCDMA MOBILE PHONE  
 Model: M4 SS1090  
 Test Date: May 26th, 2013

Medium(liquid type)	HSL_1900
Frequency (MHz)	1880.0000
Relative permittivity (real part)	41.115
Conductivity (S/m)	1.389
E-Field Probe	SN 18/11 EPG123
Crest factor	8.0
Conversion Factor	7.92
Sensor-Surface	4mm
Area Scan	dx=8mm dy=8mm
Zoom Scan	5x5x7,dx=8mm dy=8mm dz=5mm
Variation (%)	-3.20000
SAR 10g (W/Kg)	0.019793
SAR 1g (W/Kg)	0.034722

**SURFACE SAR**

**VOLUME SAR**

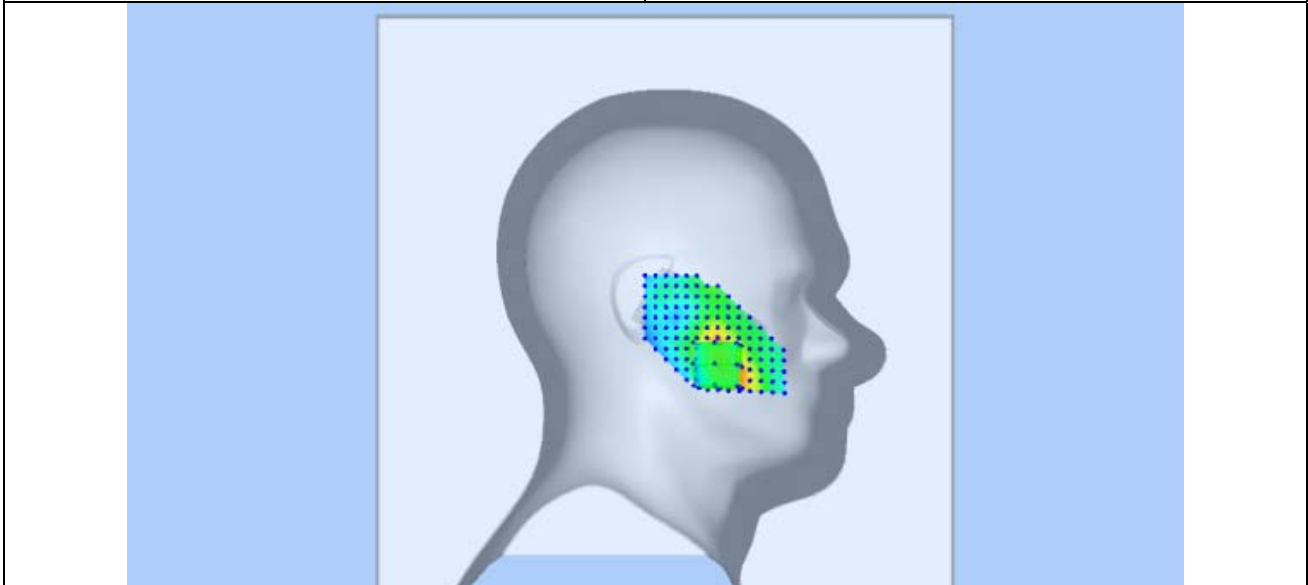
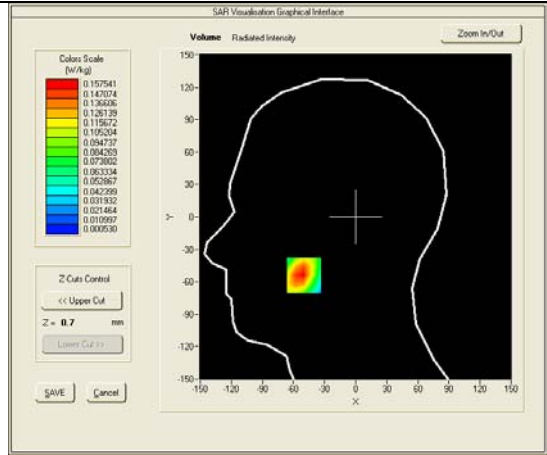
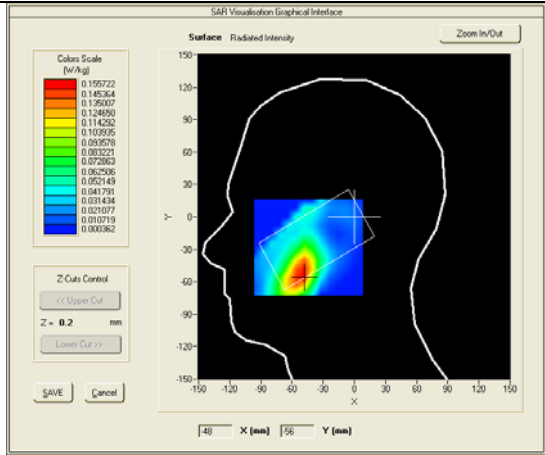


Test mode: GSM1900, Middle channel (Left Head Cheek)  
 Product Description: GSM/WCDMA MOBILE PHONE  
 Model: M4 SS1090  
 Test Date: May 26th, 2013

Medium(liquid type)	HSL_1900
Frequency (MHz)	1880.0000
Relative permittivity (real part)	41.115
Conductivity (S/m)	1.389
E-Field Probe	SN 18/11 EPG123
Crest factor	8.0
Conversion Factor	7.92
Sensor-Surface	4mm
Area Scan	dx=8mm dy=8mm
Zoom Scan	5x5x7, dx=8mm dy=8mm dz=5mm
Variation (%)	-3.10000
SAR 10g (W/Kg)	0.089248
SAR 1g (W/Kg)	0.149881

**SURFACE SAR**

**VOLUME SAR**



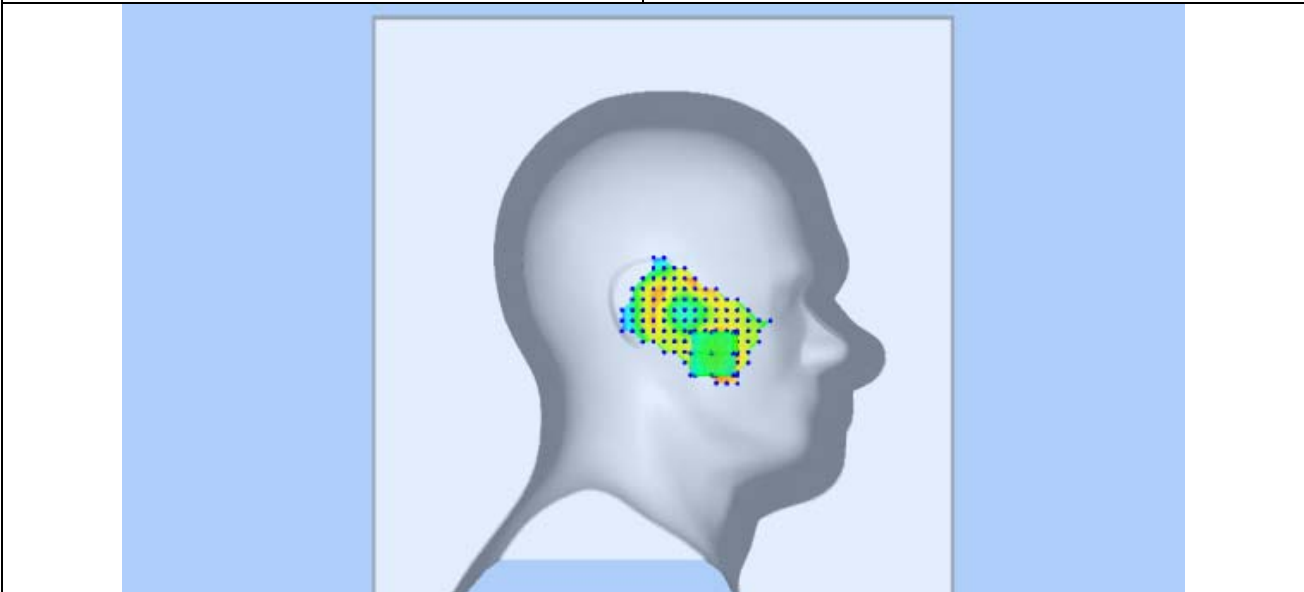
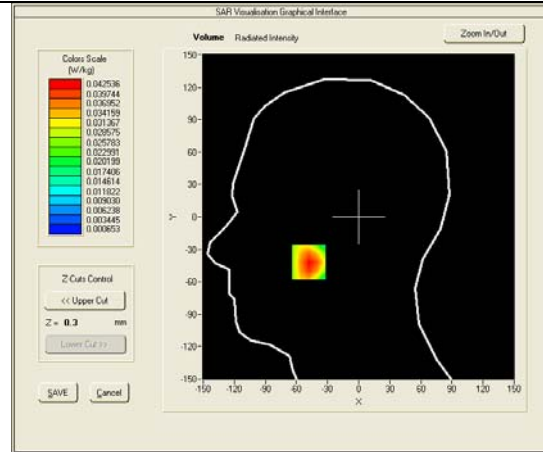
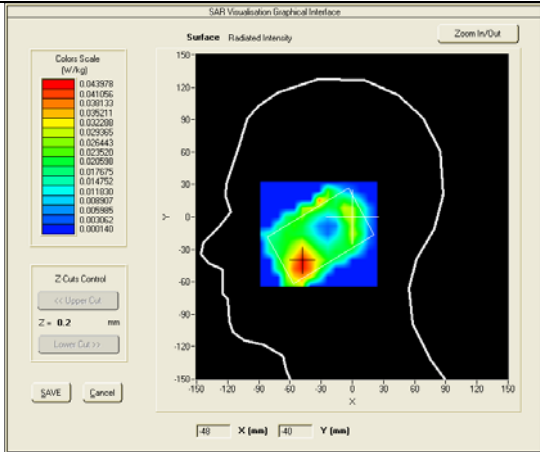


Test mode: GSM1900, Middle channel (Left Head Tilt)  
 Product Description: GSM/WCDMA MOBILE PHONE  
 Model: M4 SS1090  
 Test Date: May 26th, 2013

Medium(liquid type)	HSL_1900
Frequency (MHz)	1880.0000
Relative permittivity (real part)	41.115
Conductivity (S/m)	1.389
E-Field Probe	SN 18/11 EPG123
Crest factor	8.0
Conversion Factor	7.92
Sensor-Surface	4mm
Area Scan	dx=8mm dy=8mm
Zoom Scan	5x5x7,dx=8mm dy=8mm dz=5mm
Variation (%)	3.35000
SAR 10g (W/Kg)	0.024552
SAR 1g (W/Kg)	0.040379

**SURFACE SAR**

**VOLUME SAR**

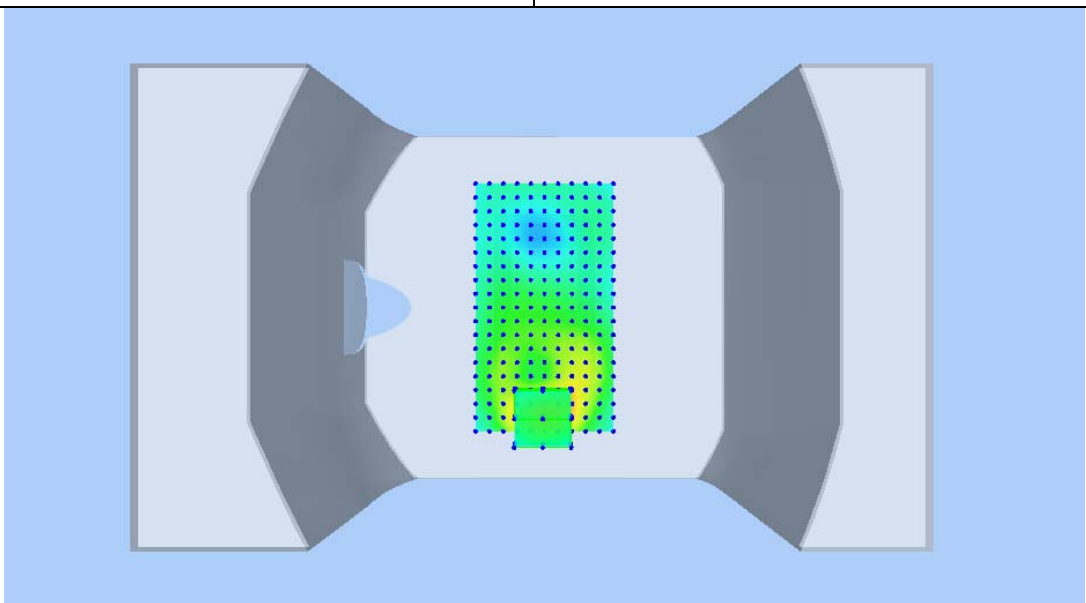
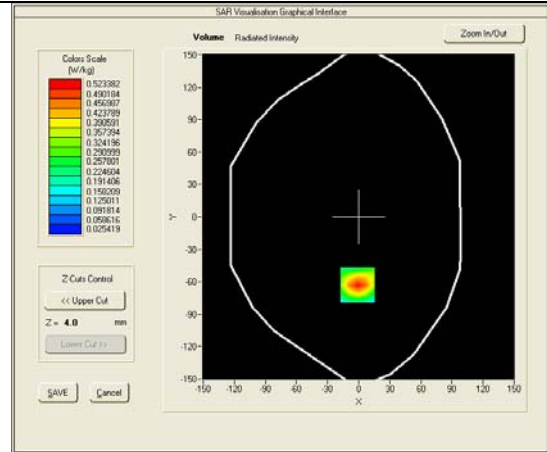
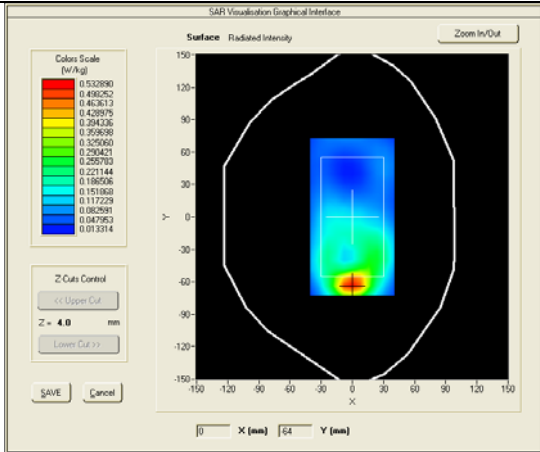


Test mode: GPRS1900, Middle channel (Body LCD-UP, edge front)  
 Product Description: GSM/WCDMA MOBILE PHONE  
 Model: M4 SS1090  
 Test Date: May 26th, 2013

Medium(liquid type)	HSL_1900
Frequency (MHz)	1880.0000
Relative permittivity (real part)	52.913
Conductivity (S/m)	1.47
E-Field Probe	SN 18/11 EPG123
Crest factor	2.0
Conversion Factor	8.18
Sensor-Surface	4mm
Area Scan	dx=8mm dy=8mm
Zoom Scan	5x5x7, dx=8mm dy=8mm dz=5mm
Variation (%)	-0.52000
SAR 10g (W/Kg)	0.282030
SAR 1g (W/Kg)	0.495643

**SURFACE SAR**

**VOLUME SAR**

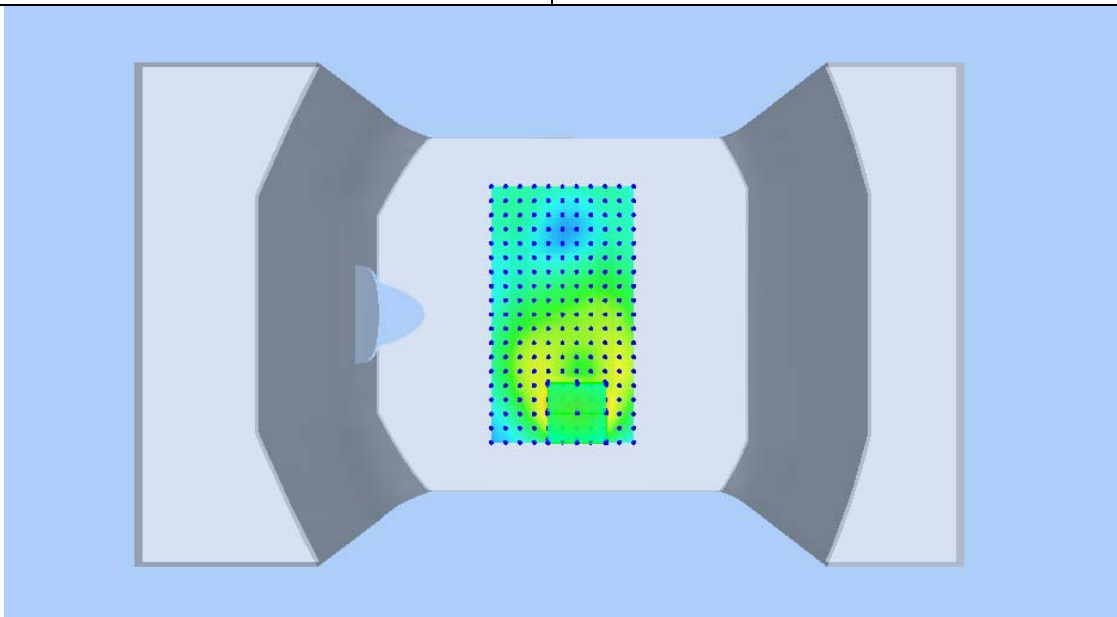
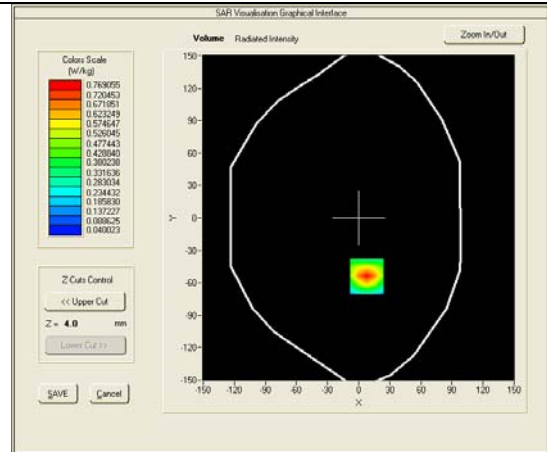
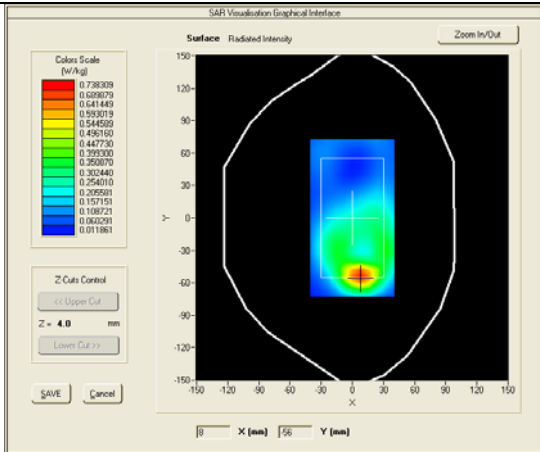


Test mode: GPRS1900, Middle channel (Body LCD-DOWN, edge back)  
 Product Description: GSM/WCDMA MOBILE PHONE  
 Model: M4 SS1090  
 Test Date: May 26th, 2013

Medium(liquid type)	MSL_1900
Frequency (MHz)	1880.00000
Relative permittivity (real part)	52.913
Conductivity (S/m)	1.47
E-Field Probe	SN 18/11 EPG123
Crest factor	2.0
Conversion Factor	8.18
Sensor-Surface	4mm
Area Scan	dx=8mm dy=8mm
Zoom Scan	5x5x7, dx=8mm dy=8mm dz=5mm
Variation (%)	1.86000
SAR 10g (W/Kg)	0.400906
SAR 1g (W/Kg)	0.725914

**SURFACE SAR**

**VOLUME SAR**

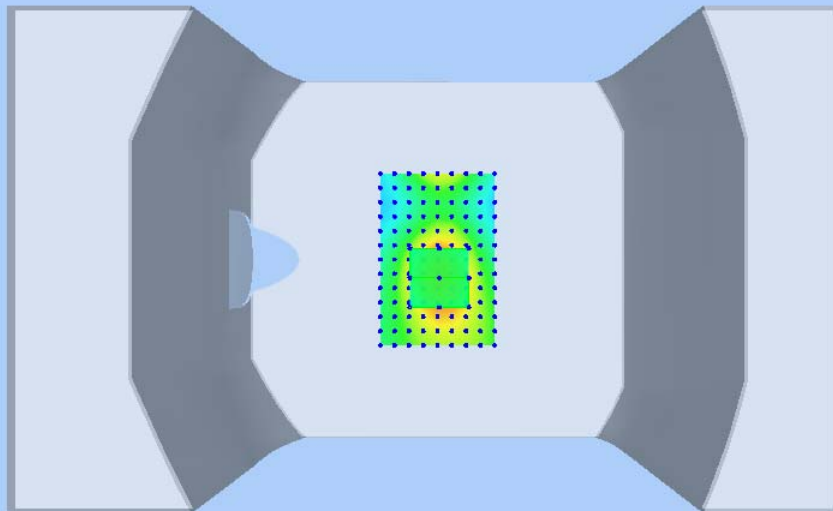
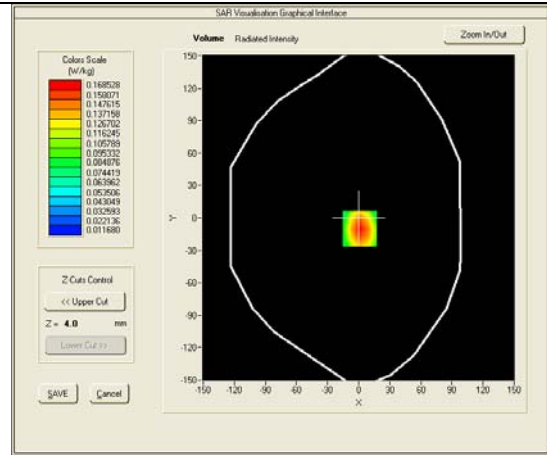
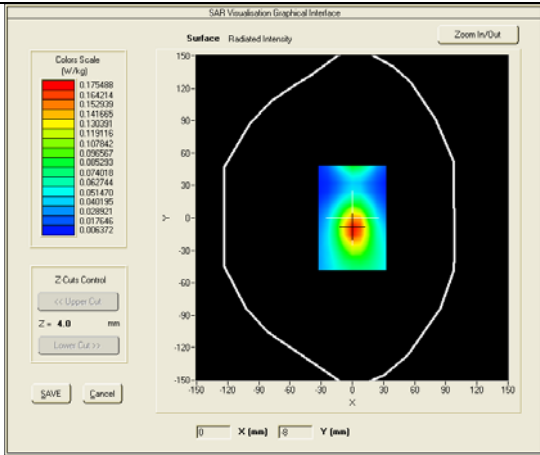


Test mode: GPRS1900, Middle channel (Body, edge right)  
 Product Description: GSM/WCDMA MOBILE PHONE  
 Model: M4 SS1090  
 Test Date: May 26th, 2013

Medium(liquid type)	MSL_1900
Frequency (MHz)	1880.00000
Relative permittivity (real part)	52.913
Conductivity (S/m)	1.47
E-Field Probe	SN 18/11 EPG123
Crest factor	2.0
Conversion Factor	8.18
Sensor-Surface	4mm
Area Scan	dx=8mm dy=8mm
Zoom Scan	5x5x7, dx=8mm dy=8mm dz=5mm
Variation (%)	0.88000
SAR 10g (W/Kg)	0.095289
SAR 1g (W/Kg)	0.162375

**SURFACE SAR**

**VOLUME SAR**

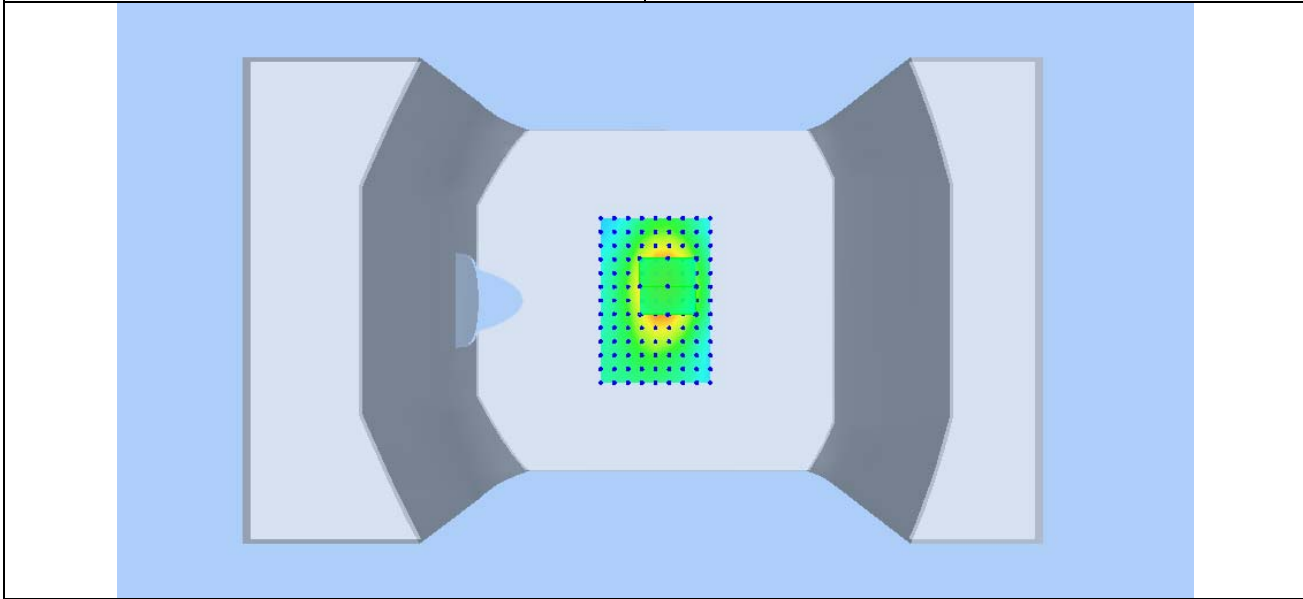
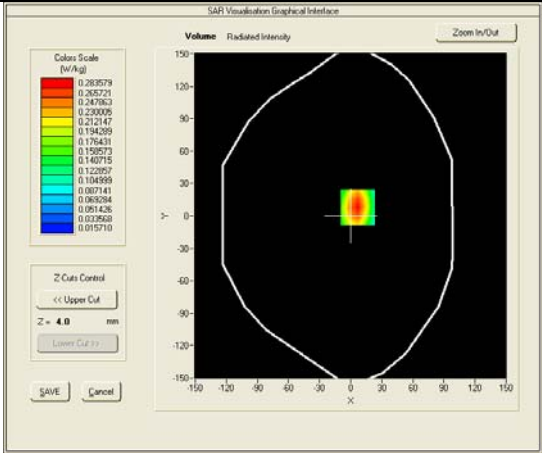
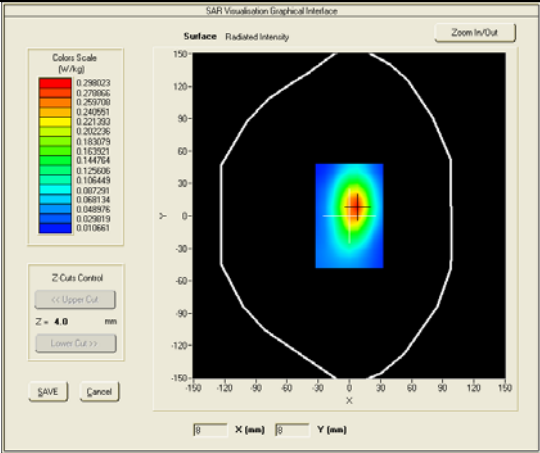


Test mode: GPRS1900, Middle channel (Body, edge left)  
 Product Description: GSM/WCDMA MOBILE PHONE  
 Model: M4 SS1090  
 Test Date: May 26th, 2013

Medium(liquid type)	MSL_1900
Frequency (MHz)	1880.00000
Relative permittivity (real part)	52.913
Conductivity (S/m)	1.47
E-Field Probe	SN 18/11 EPG123
Crest factor	2.0
Conversion Factor	8.18
Sensor-Surface	4mm
Area Scan	dx=8mm dy=8mm
Zoom Scan	5x5x7, dx=8mm dy=8mm dz=5mm
Variation (%)	1.72000
SAR 10g (W/Kg)	0.159013
SAR 1g (W/Kg)	0.272786

**SURFACE SAR**

**VOLUME SAR**

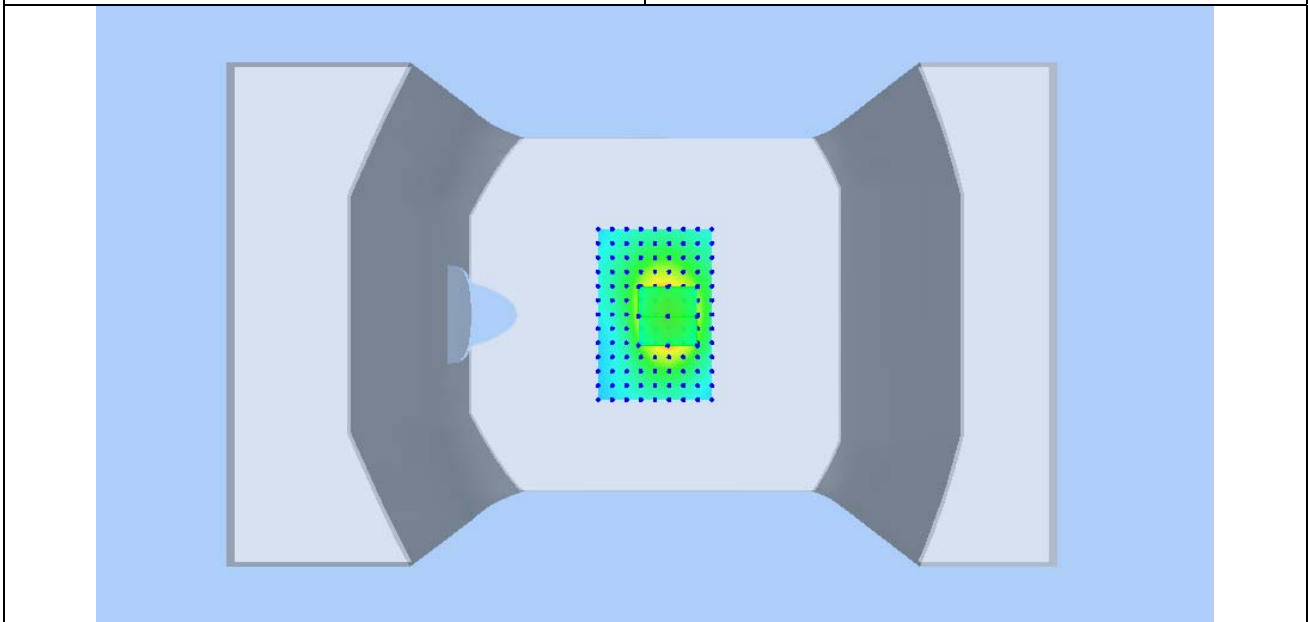
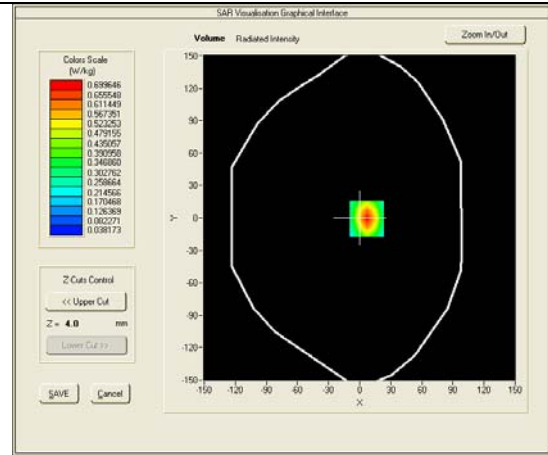
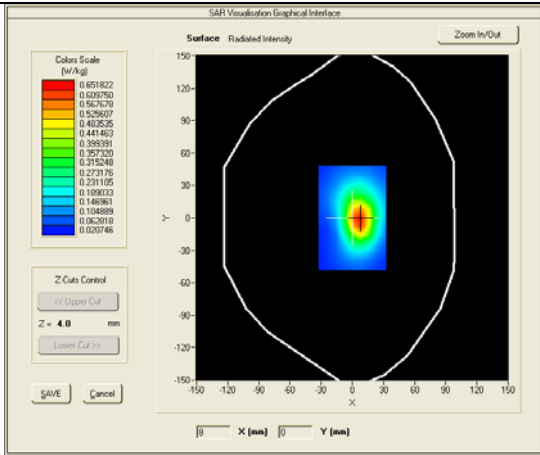


Test mode: GPRS1900, Middle channel (Body, edge bottom)  
 Product Description: GSM/WCDMA MOBILE PHONE  
 Model: M4 SS1090  
 Test Date: May 26th, 2013

Medium(liquid type)	MSL_1900
Frequency (MHz)	1880.00000
Relative permittivity (real part)	52.913
Conductivity (S/m)	1.47
E-Field Probe	SN 18/11 EPG123
Crest factor	2.0
Conversion Factor	8.18
Sensor-Surface	4mm
Area Scan	dx=8mm dy=8mm
Zoom Scan	5x5x7, dx=8mm dy=8mm dz=5mm
Variation (%)	-1.13000
SAR 10g (W/Kg)	0.368190
SAR 1g (W/Kg)	0.663144

**SURFACE SAR**

**VOLUME SAR**

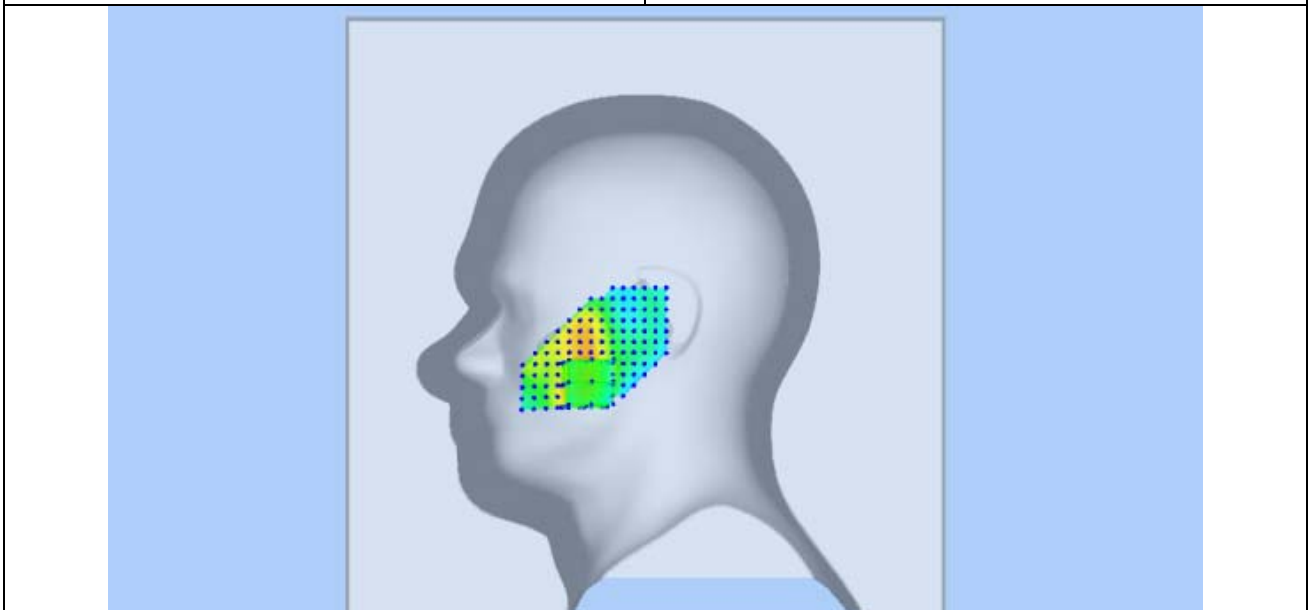
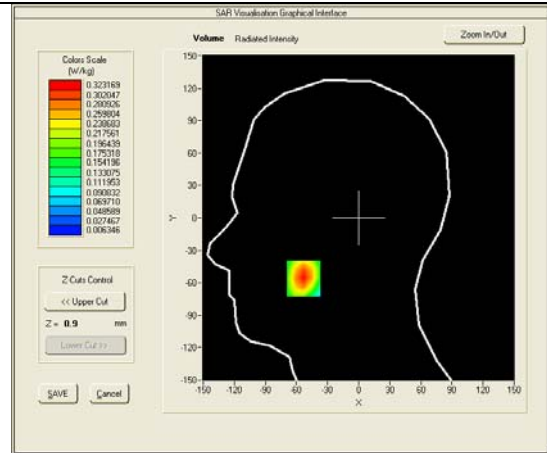
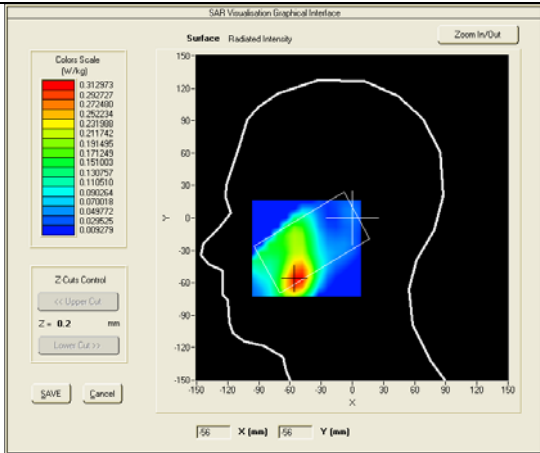


Test mode: WCDMA BAND II , middle channel (Right Head Cheek)  
 Product Description: GSM/WCDMA MOBILE PHONE  
 Model: M4 SS1090  
 Test Date: May 26th, 2013

Medium(liquid type)	HSL_1900
Frequency (MHz)	1880.0000
Relative permittivity (real part)	41.115
Conductivity (S/m)	1.389
E-Field Probe	SN 18/11 EPG123
Crest factor	1.0
Conversion Factor	9.09
Sensor-Surface	4mm
Area Scan	dx=8mm dy=8mm
Zoom Scan	5x5x7, dx=8mm dy=8mm dz=5mm
Variation (%)	-4.17000
SAR 10g (W/Kg)	0.187858
SAR 1g (W/Kg)	0.303486

**SURFACE SAR**

**VOLUME SAR**

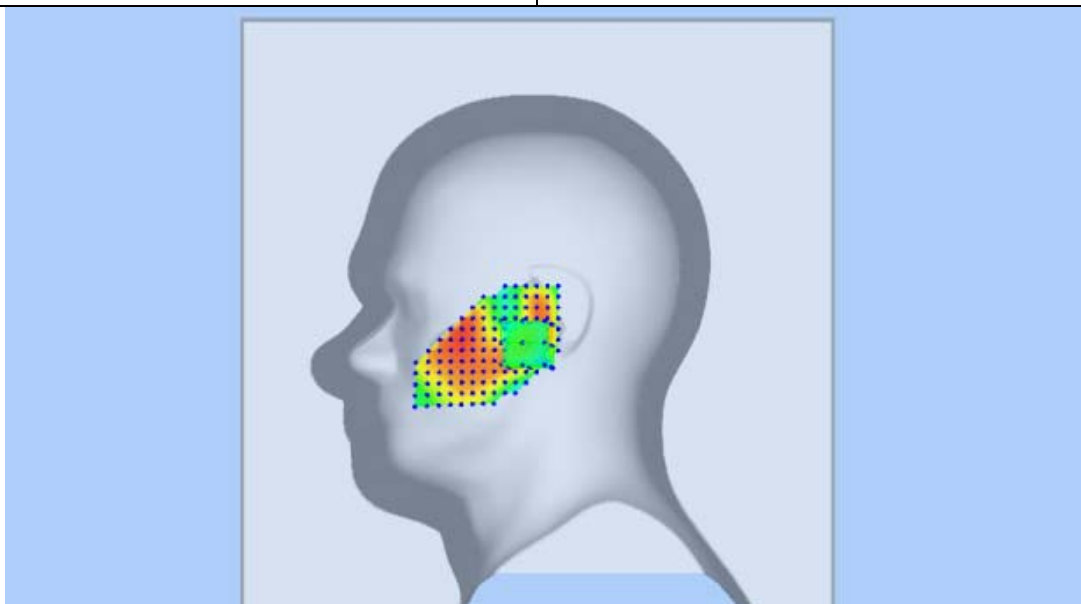
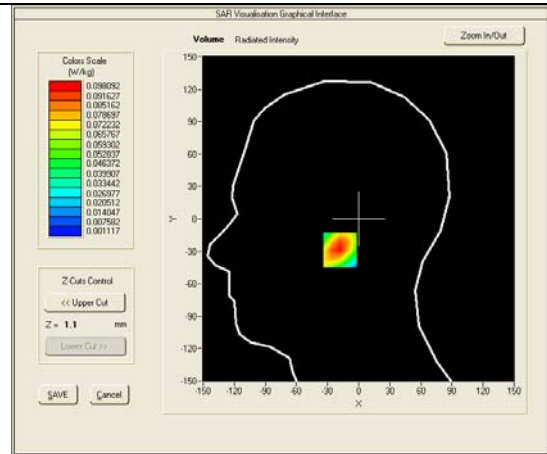
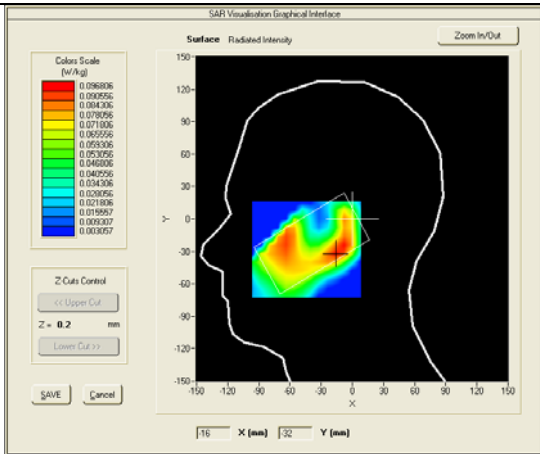


Test mode: WCDMA BAND II , middle channel (Right Head Tilt)  
 Product Description: GSM/WCDMA MOBILE PHONE  
 Model: M4 SS1090  
 Test Date: May 26th, 2013

Medium(liquid type)	HSL_1900
Frequency (MHz)	1880.0000
Relative permittivity (real part)	41.115
Conductivity (S/m)	1.389
E-Field Probe	SN 18/11 EPG123
Crest factor	1.0
Conversion Factor	9.09
Sensor-Surface	4mm
Area Scan	dx=8mm dy=8mm
Zoom Scan	5x5x7, dx=8mm dy=8mm dz=5mm
Variation (%)	0.81000
SAR 10g (W/Kg)	0.054973
SAR 1g (W/Kg)	0.093189

**SURFACE SAR**

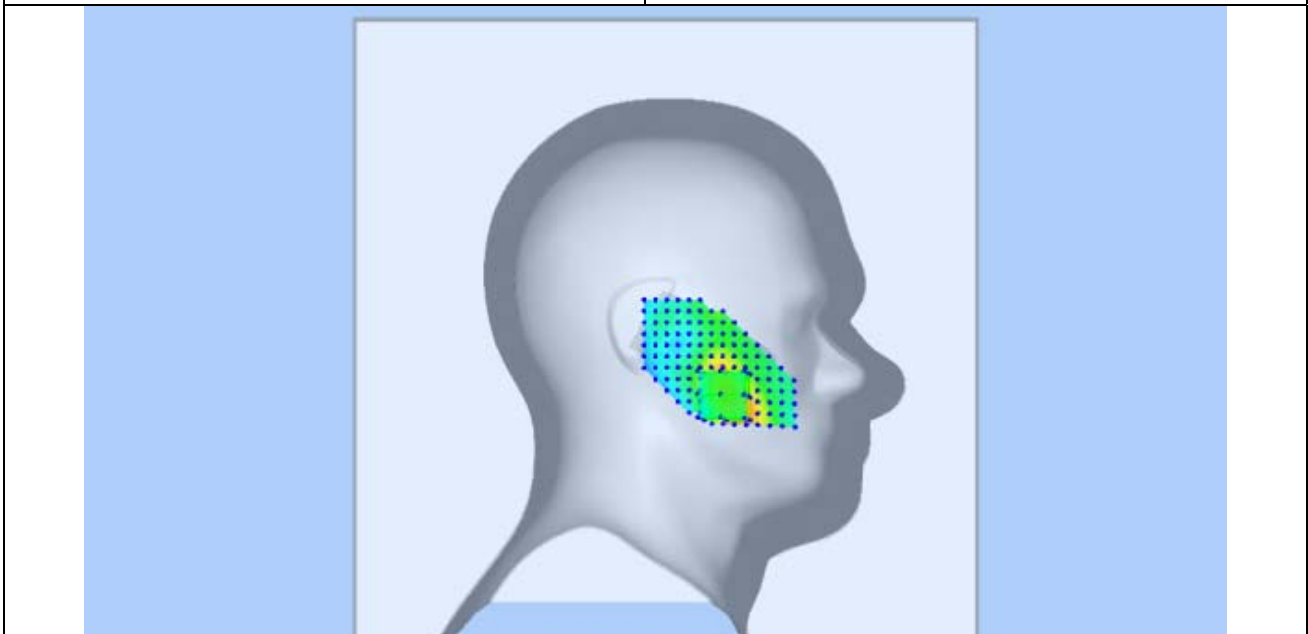
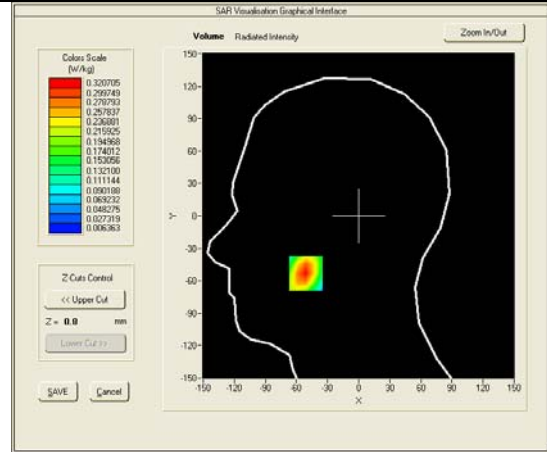
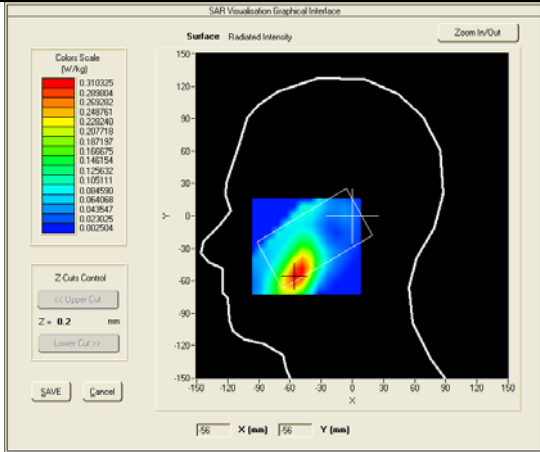
**VOLUME SAR**





Test mode: WCDMA BAND II , middle channel (left Head Cheek)  
 Product Description: GSM/WCDMA MOBILE PHONE  
 Model: M4 SS1090  
 Test Date: May 26th, 2013

Medium(liquid type)	HSL_1900
Frequency (MHz)	1880.0000
Relative permittivity (real part)	41.115
Conductivity (S/m)	1.389
E-Field Probe	SN 18/11 EPG123
Crest factor	1.0
Conversion Factor	9.09
Sensor-Surface	4mm
Area Scan	dx=8mm dy=8mm
Zoom Scan	5x5x7,dx=8mm dy=8mm dz=5mm
Variation (%)	2.28000
SAR 10g (W/Kg)	0.179933
SAR 1g (W/Kg)	0.300672
<b>SURFACE SAR</b>	<b>VOLUME SAR</b>

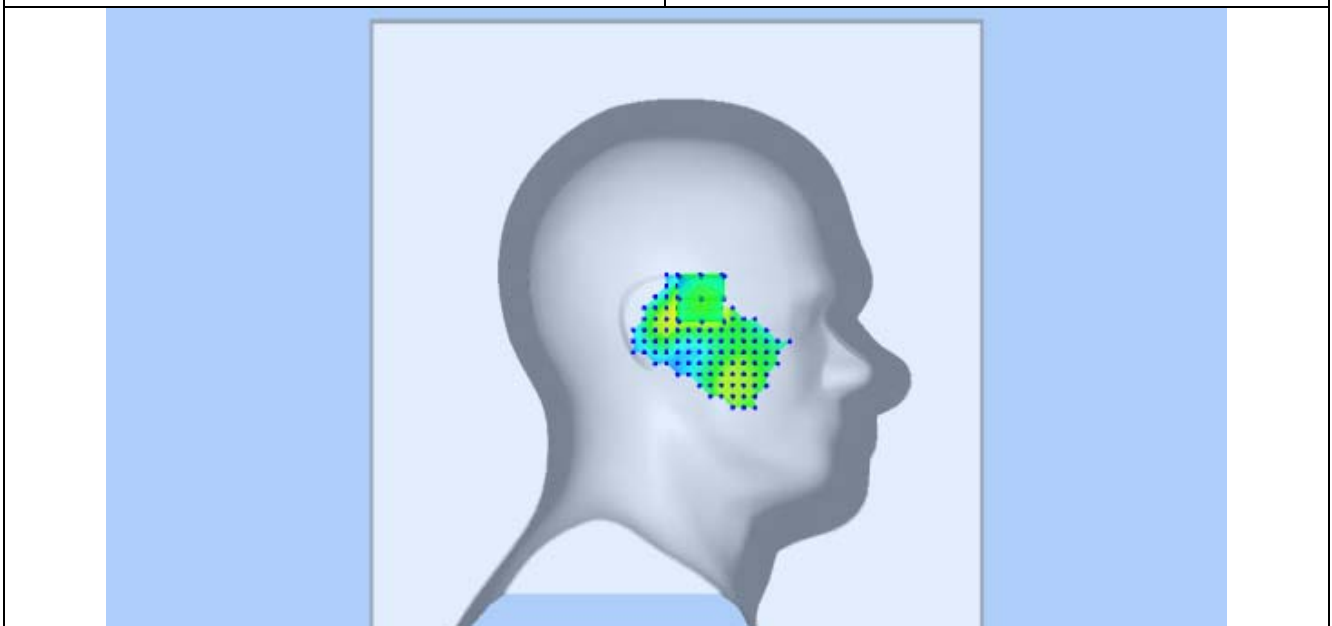
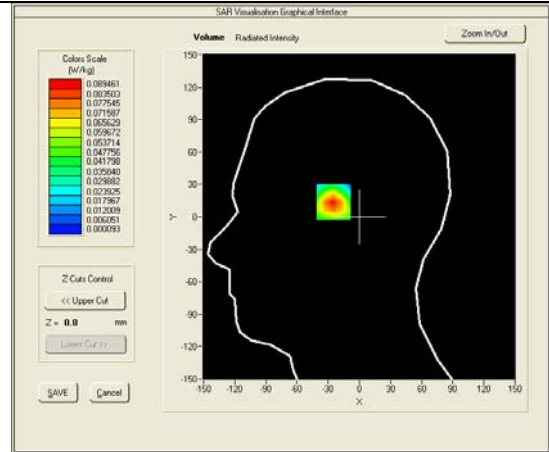
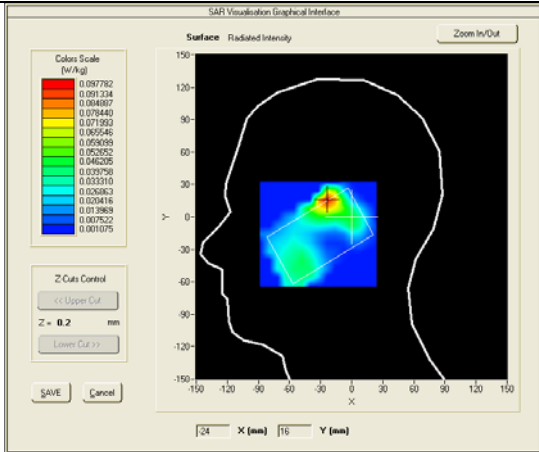


Test mode: WCDMA BAND II , middle channel (Left Head Tilt)  
 Product Description: GSM/WCDMA MOBILE PHONE  
 Model: M4 SS1090  
 Test Date: May 26th, 2013

Medium(liquid type)	HSL_1900
Frequency (MHz)	1880.0000
Relative permittivity (real part)	41.115
Conductivity (S/m)	1.389
E-Field Probe	SN 18/11 EPG123
Crest factor	1.0
Conversion Factor	9.09
Sensor-Surface	4mm
Area Scan	dx=8mm dy=8mm
Zoom Scan	5x5x7,dx=8mm dy=8mm dz=5mm
Variation (%)	-2.65000
SAR 10g (W/Kg)	0.064315
SAR 1g (W/Kg)	0.094120

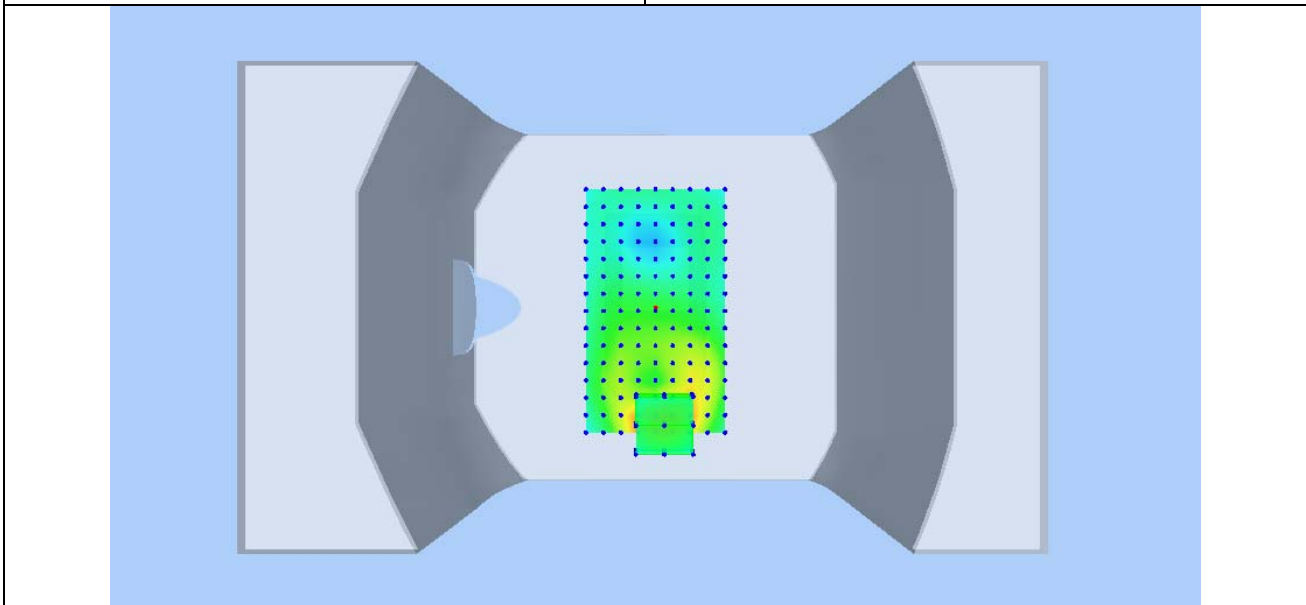
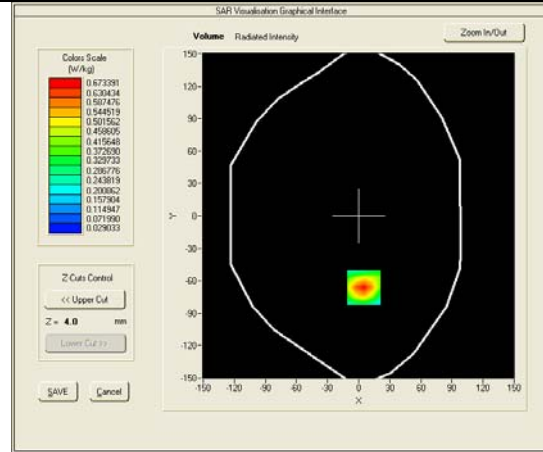
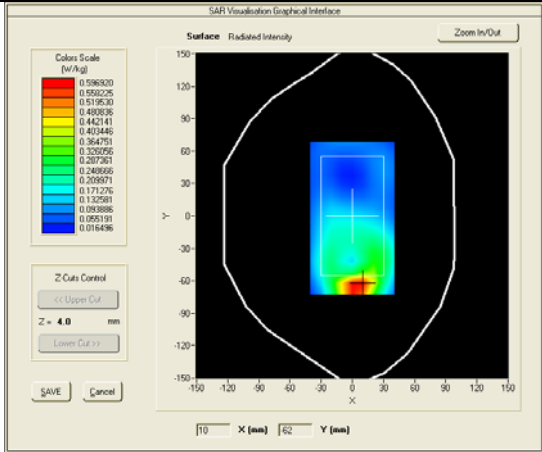
**SURFACE SAR**

**VOLUME SAR**



Test mode: WCDMA BAND II , middle channel (Body LCD-UP, edge front)  
 Product Description: GSM/WCDMA MOBILE PHONE  
 Model: M4 SS1090  
 Test Date: May 26th, 2013

Medium(liquid type)	MSL_1900
Frequency (MHz)	1880.0000
Relative permittivity (real part)	52.913
Conductivity (S/m)	1.511
E-Field Probe	SN 18/11 EPG123
Crest factor	1.0
Conversion Factor	9.32
Sensor-Surface	4mm
Area Scan	dx=8mm dy=8mm
Zoom Scan	5x5x7,dx=8mm dy=8mm dz=5mm
Variation (%)	-0.70000
SAR 10g (W/Kg)	0.378765
SAR 1g (W/Kg)	0.677160
<b>SURFACE SAR</b>	<b>VOLUME SAR</b>

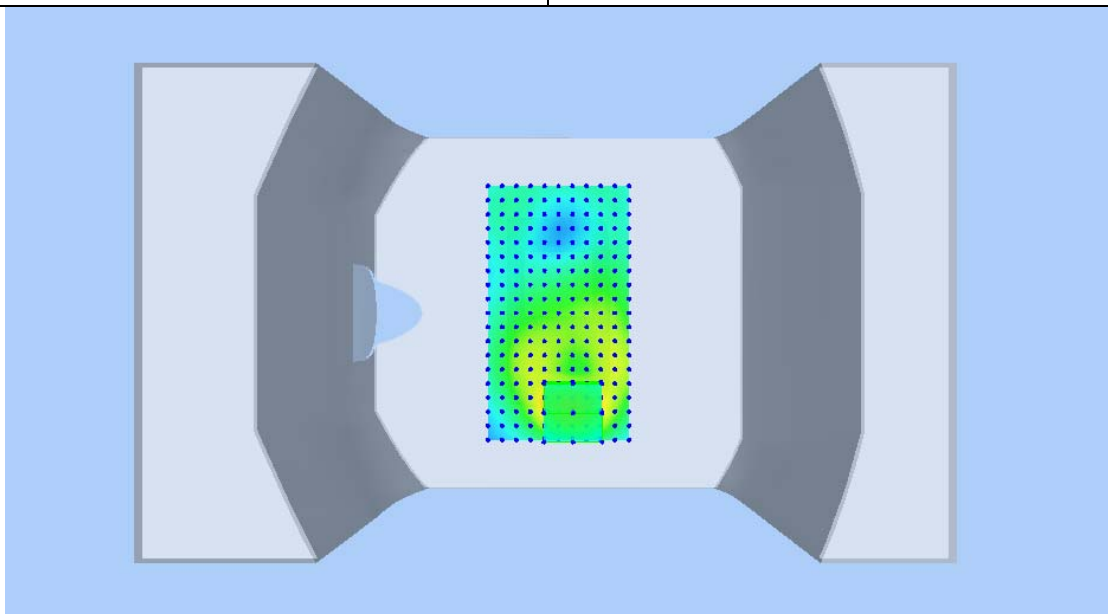
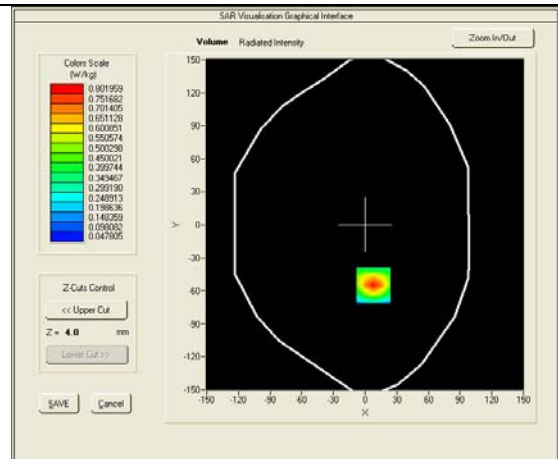
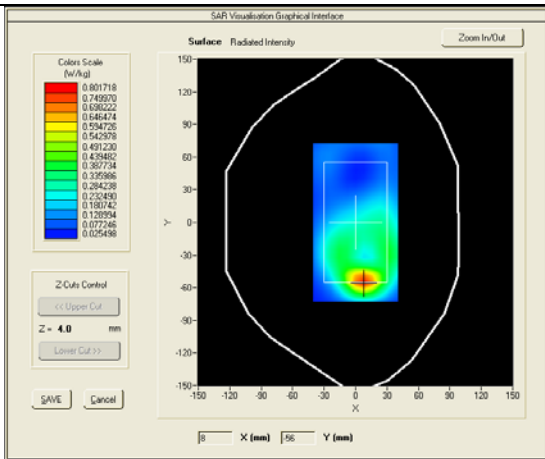


Test mode: WCDMA BAND II , middle channel (Body LCD-DOWN, edge back)  
 Product Description: GSM/WCDMA MOBILE PHONE  
 Model: M4 SS1090  
 Test Date: May 26th, 2013

Medium(liquid type)	MSL_1900
Frequency (MHz)	1880.0000
Relative permittivity (real part)	52.913
Conductivity (S/m)	1.511
E-Field Probe	SN 18/11 EPG123
Crest factor	1.0
Conversion Factor	9.32
Sensor-Surface	4mm
Area Scan	dx=8mm dy=8mm
Zoom Scan	5x5x7,dx=8mm dy=8mm dz=5mm
Variation (%)	-0.40000
SAR 10g (W/Kg)	0.405160
SAR 1g (W/Kg)	0.792170

**SURFACE SAR**

**VOLUME SAR**

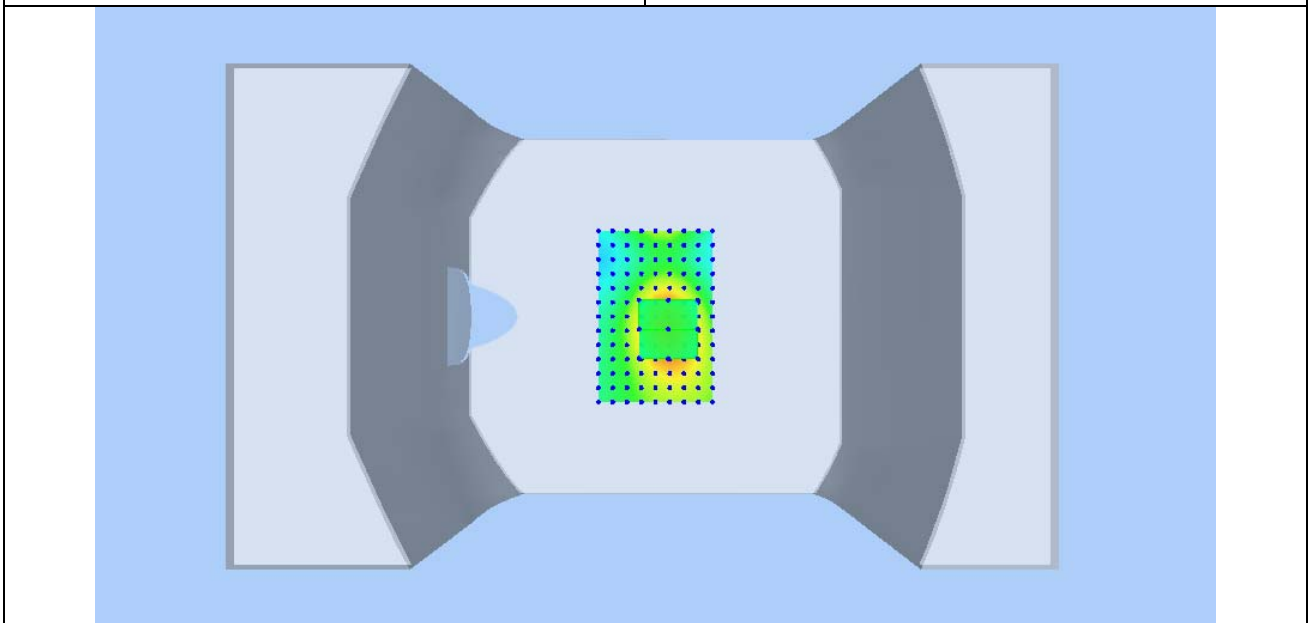
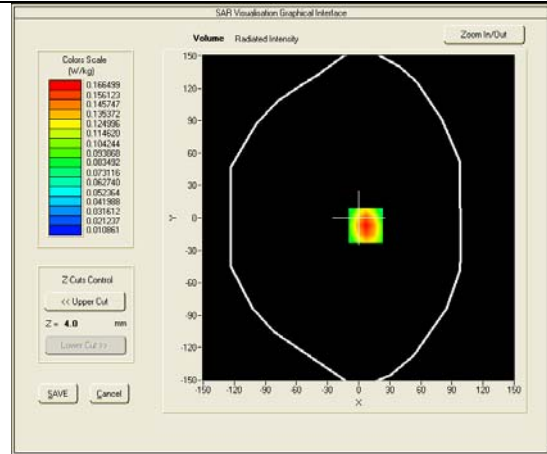
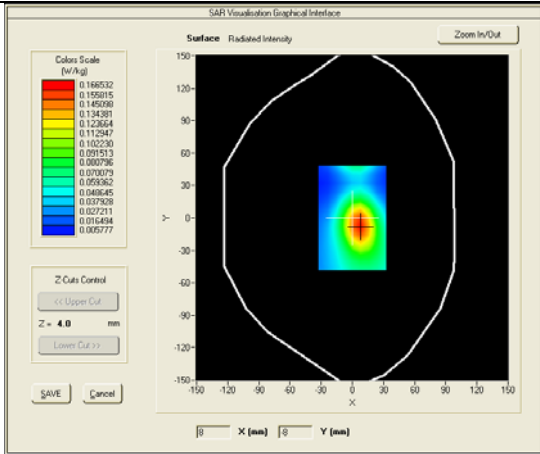


Test mode: WCDMA BAND II , middle channel (Body, edge right)  
 Product Description: GSM/WCDMA MOBILE PHONE  
 Model: M4 SS1090  
 Test Date: May 26th, 2013

Medium(liquid type)	MSL_1900
Frequency (MHz)	1880.0000
Relative permittivity (real part)	52.913
Conductivity (S/m)	1.511
E-Field Probe	SN 18/11 EPG123
Crest factor	1.0
Conversion Factor	9.32
Sensor-Surface	4mm
Area Scan	dx=8mm dy=8mm
Zoom Scan	5x5x7,dx=8mm dy=8mm dz=5mm
Variation (%)	-0.50000
SAR 10g (W/Kg)	0.100860
SAR 1g (W/Kg)	0.169709

**SURFACE SAR**

**VOLUME SAR**

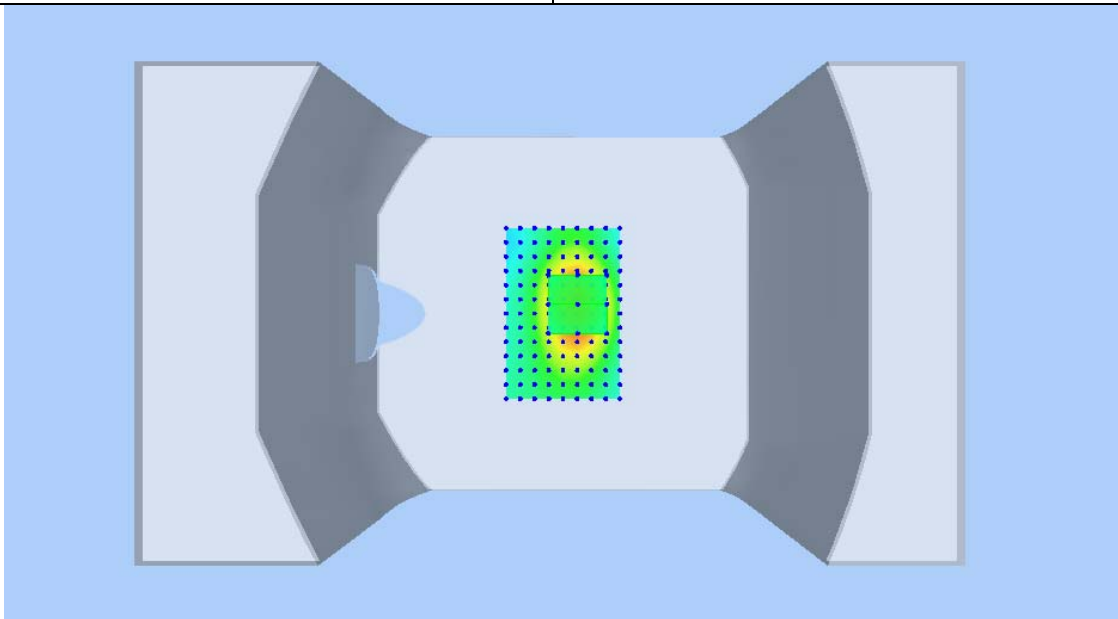
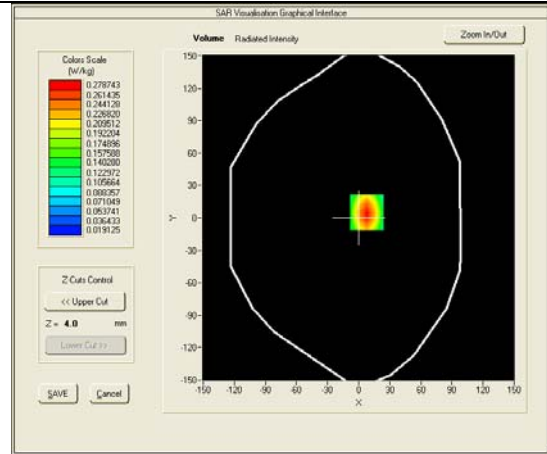
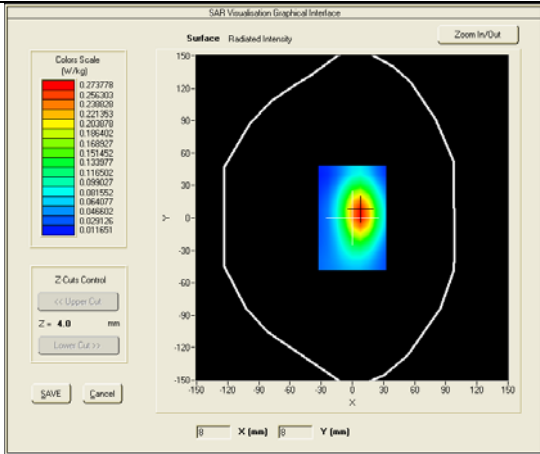


Test mode: WCDMA BAND II , middle channel (Body, edge left)  
 Product Description: GSM/WCDMA MOBILE PHONE  
 Model: M4 SS1090  
 Test Date: May 26th, 2013

Medium(liquid type)	MSL_1900
Frequency (MHz)	1880.0000
Relative permittivity (real part)	52.913
Conductivity (S/m)	1.511
E-Field Probe	SN 18/11 EPG123
Crest factor	1.0
Conversion Factor	9.32
Sensor-Surface	4mm
Area Scan	dx=8mm dy=8mm
Zoom Scan	5x5x7,dx=8mm dy=8mm dz=5mm
Variation (%)	0.04000
SAR 10g (W/Kg)	0.166700
SAR 1g (W/Kg)	0.283706

**SURFACE SAR**

**VOLUME SAR**

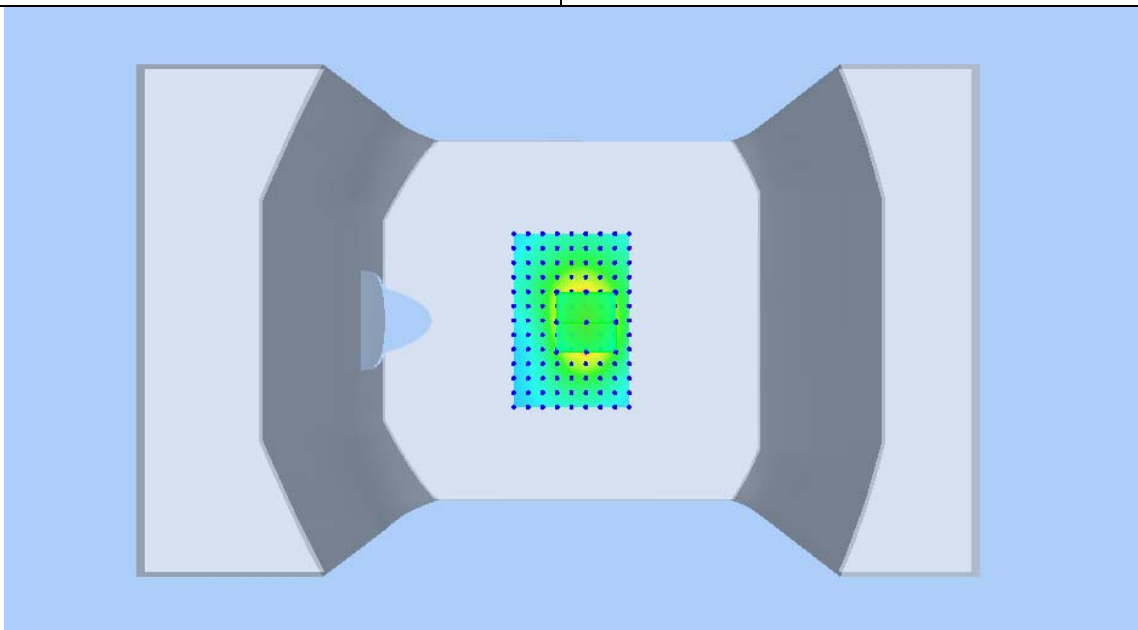
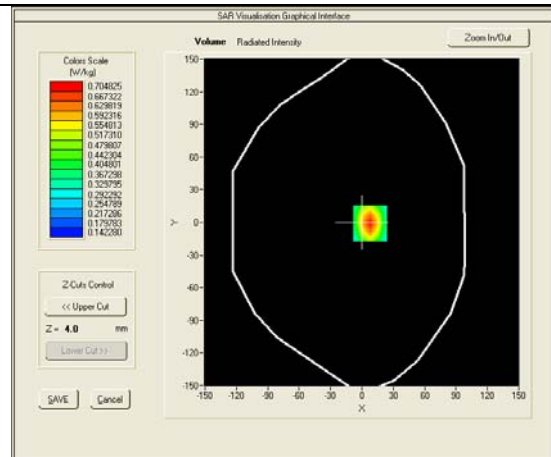
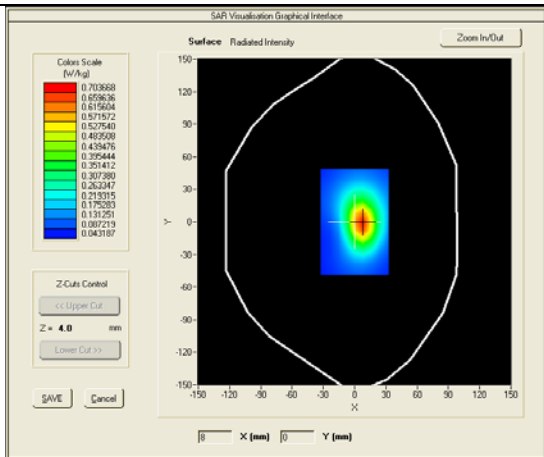


Test mode: WCDMA BAND II , middle channel (Body, edge bottom)  
 Product Description: GSM/WCDMA MOBILE PHONE  
 Model: M4 SS1090  
 Test Date: May 26th, 2013

Medium(liquid type)	MSL_1900
Frequency (MHz)	1880.0000
Relative permittivity (real part)	52.913
Conductivity (S/m)	1.511
E-Field Probe	SN 18/11 EPG123
Crest factor	1.0
Conversion Factor	9.32
Sensor-Surface	4mm
Area Scan	dx=8mm dy=8mm
Zoom Scan	5x5x7,dx=8mm dy=8mm dz=5mm
Variation (%)	0.20000
SAR 10g (W/Kg)	0.400900
SAR 1g (W/Kg)	0.706281

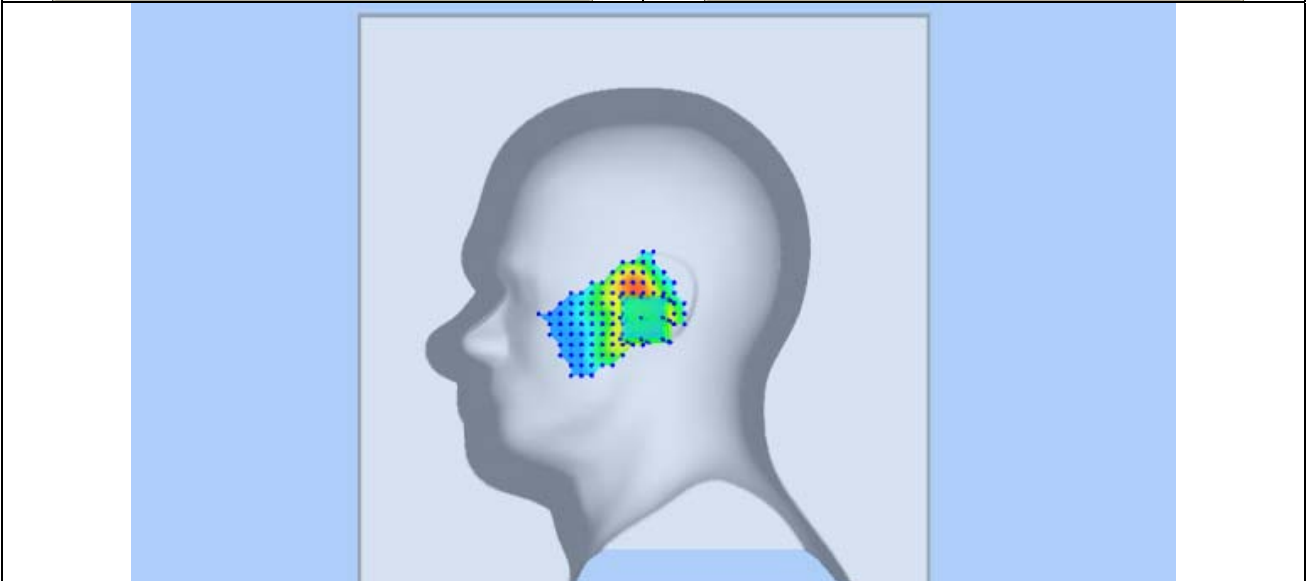
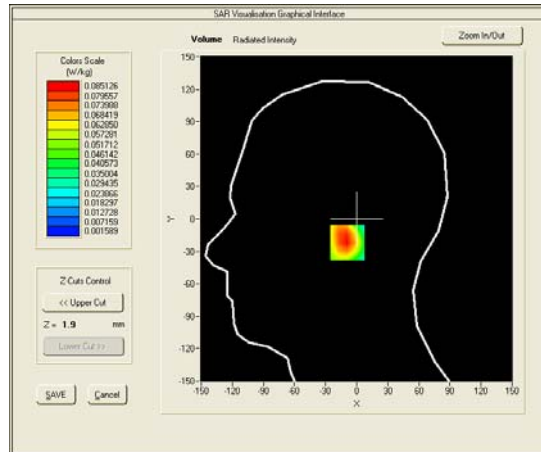
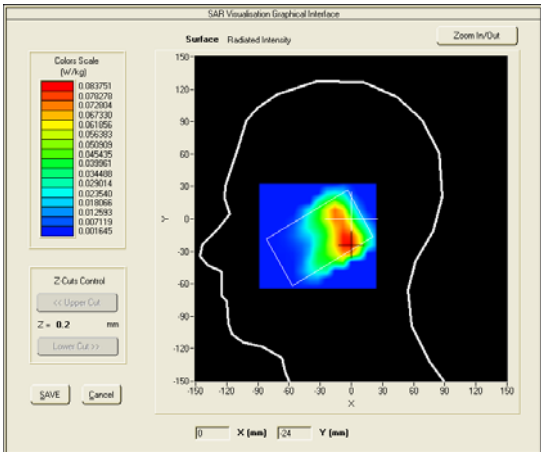
**SURFACE SAR**

**VOLUME SAR**



**Test mode: 802.11b, middle channel (Right -Cheek)**  
**Product Description: GSM/WCDMA MOBILE PHONE**  
**Model: M4 SS1090**  
**Test Date: May 27th, 2013**

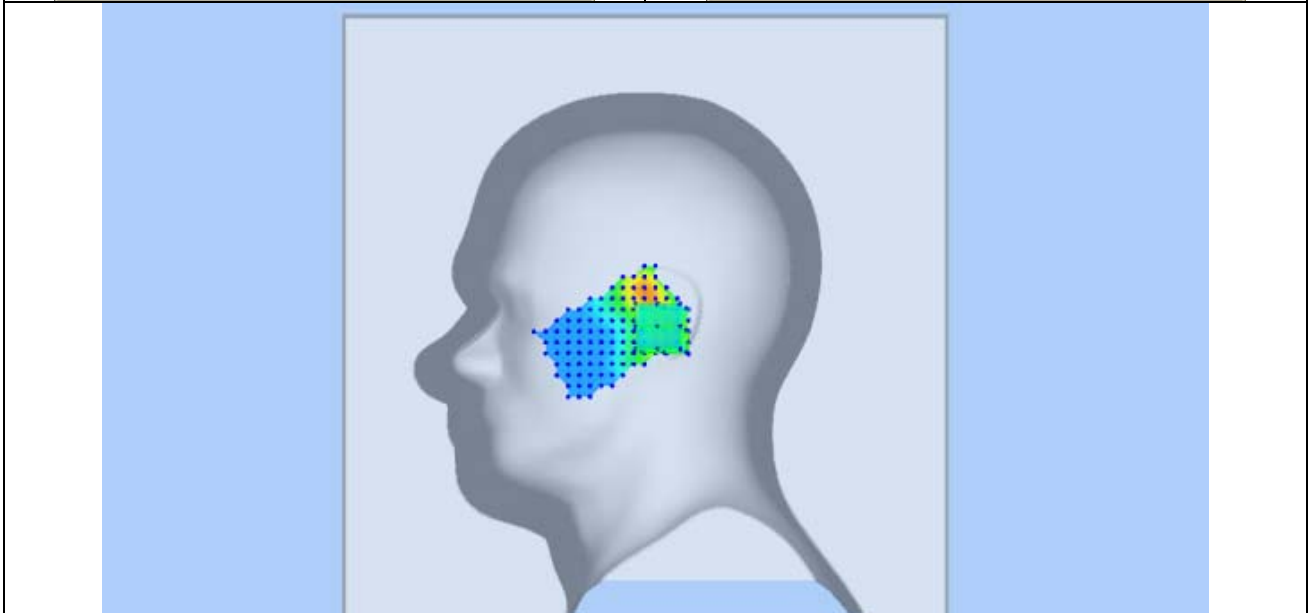
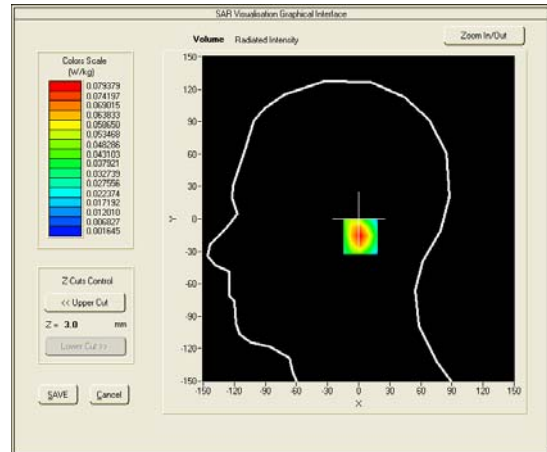
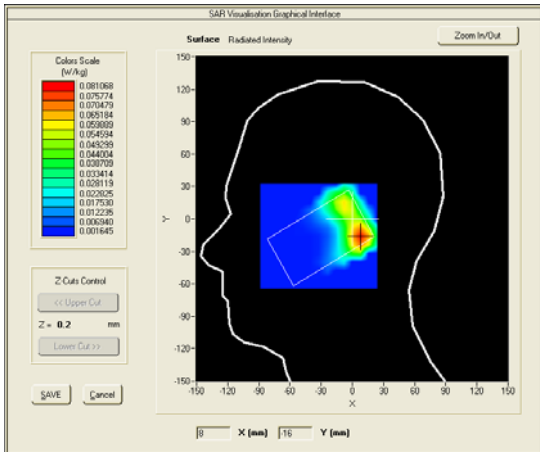
Medium(liquid type)	HSL_2450
Frequency (MHz)	2437.0000
Relative permittivity (real part)	39.511
Conductivity (S/m)	1.781
E-Field Probe	SN 18/11 EPG123
Crest factor	1.0
Conversion Factor	8.16
Sensor-Surface	4mm
Area Scan	dx=8mm dy=8mm
Zoom Scan	7x7x7,dx=5mm dy=5mm dz=5mm
Variation (%)	-0.80000
SAR 10g (W/Kg)	0.043001
SAR 1g (W/Kg)	0.080888
<b>SURFACE SAR</b>	<b>VOLUME SAR</b>





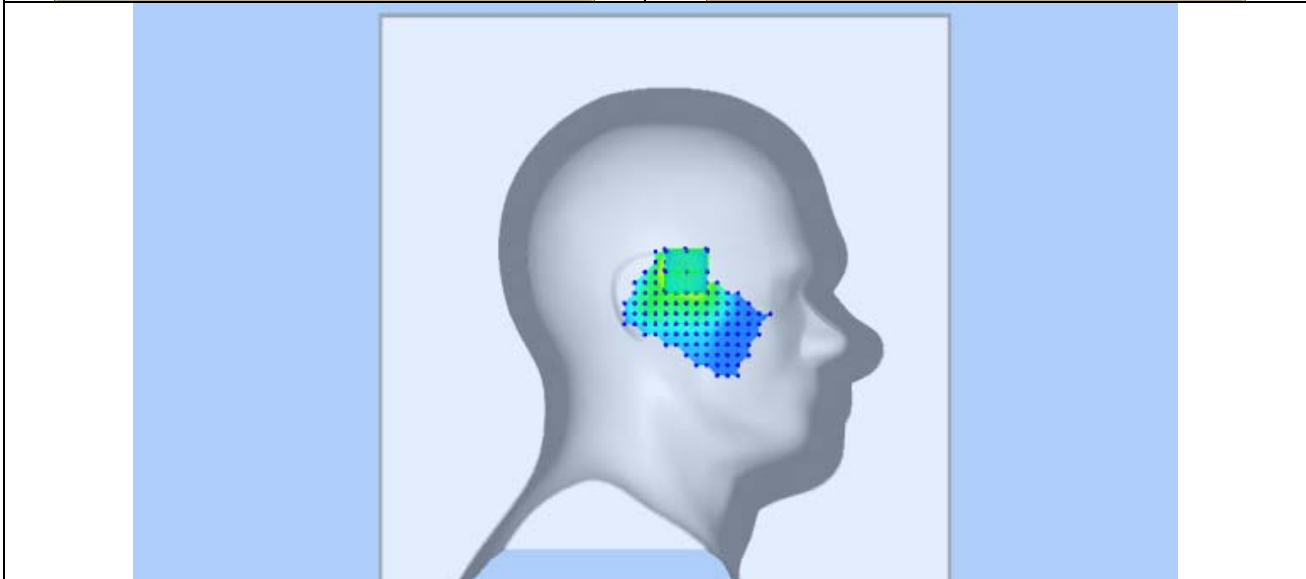
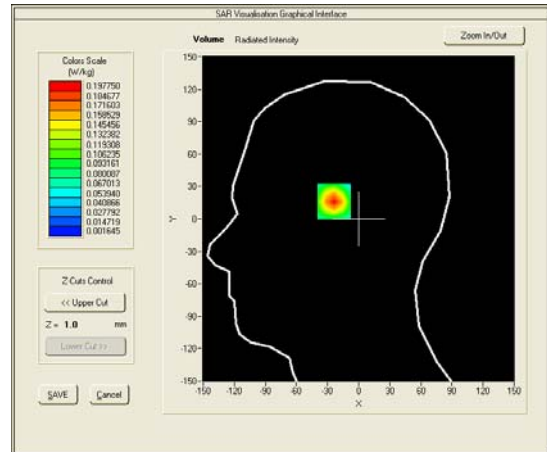
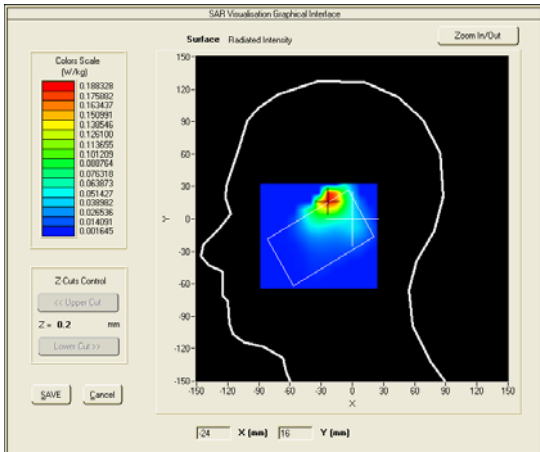
**Test mode: 802.11b, middle channel (Right-tilt)**  
**Product Description: GSM/WCDMA MOBILE PHONE**  
**Model: M4 SS1090**  
**Test Date: May 27th, 2013**

Medium(liquid type)	HSL_2450
Frequency (MHz)	2437.0000
Relative permittivity (real part)	39.511
Conductivity (S/m)	1.781
E-Field Probe	SN 18/11 EPG123
Crest factor	1.0
Conversion Factor	8.16
Sensor-Surface	4mm
Area Scan	dx=8mm dy=8mm
Zoom Scan	7x7x7,dx=5mm dy=5mm dz=5mm
Variation (%)	2.23000
SAR 10g (W/Kg)	0.037064
SAR 1g (W/Kg)	0.073635
<b>SURFACE SAR</b>	<b>VOLUME SAR</b>



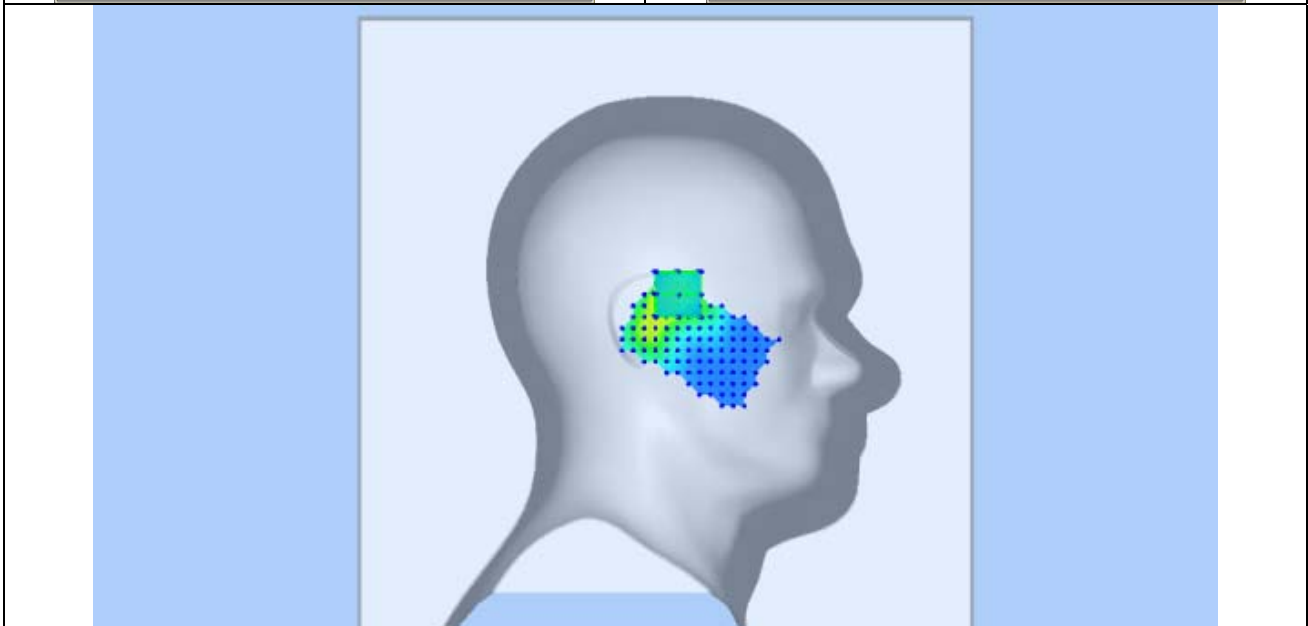
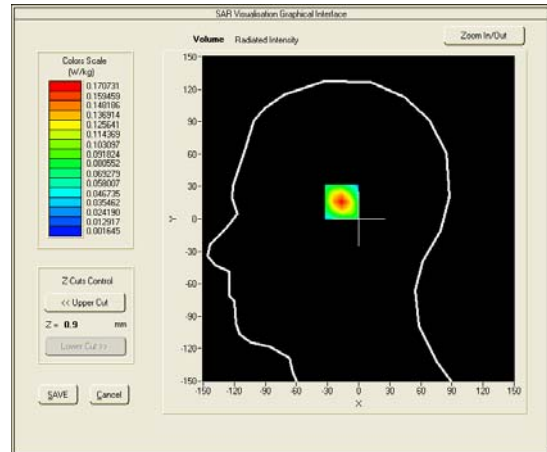
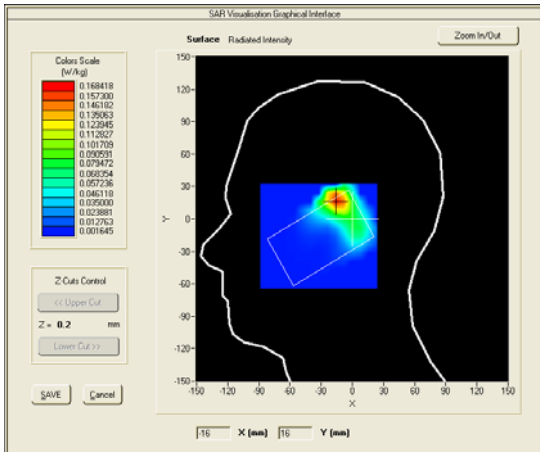
Test mode: 802.11b, middle channel (Left Cheek)  
 Product Description: GSM/WCDMA MOBILE PHONE  
 Model: M4 SS1090  
 Test Date: May 27th, 2013

Medium(liquid type)	HSL_2450
Frequency (MHz)	2437.0000
Relative permittivity (real part)	39.511
Conductivity (S/m)	1.781
E-Field Probe	SN 18/11 EPG123
Crest factor	1.0
Conversion Factor	8.16
Sensor-Surface	4mm
Area Scan	dx=8mm dy=8mm
Zoom Scan	7x7x7,dx=5mm dy=5mm dz=5mm
Variation (%)	0.09000
SAR 10g (W/Kg)	0.089778
SAR 1g (W/Kg)	0.182150
<b>SURFACE SAR</b>	<b>VOLUME SAR</b>



**Test mode: 802.11b, middle channel (Left Tilt)**  
**Product Description: GSM/WCDMA MOBILE PHONE**  
**Model: M4 SS1090**  
**Test Date: May 27th, 2013**

Medium(liquid type)	MSL_2450
Frequency (MHz)	2437.0000
Relative permittivity (real part)	39.511
Conductivity (S/m)	1.781
E-Field Probe	SN 18/11 EPG123
Crest factor	1.0
Conversion Factor	8.16
Sensor-Surface	4mm
Area Scan	dx=8mm dy=8mm
Zoom Scan	7x7x7,dx=5mm dy=5mm dz=5mm
Variation (%)	-2.27000
SAR 10g (W/Kg)	0.074814
SAR 1g (W/Kg)	0.156880
<b>SURFACE SAR</b>	<b>VOLUME SAR</b>



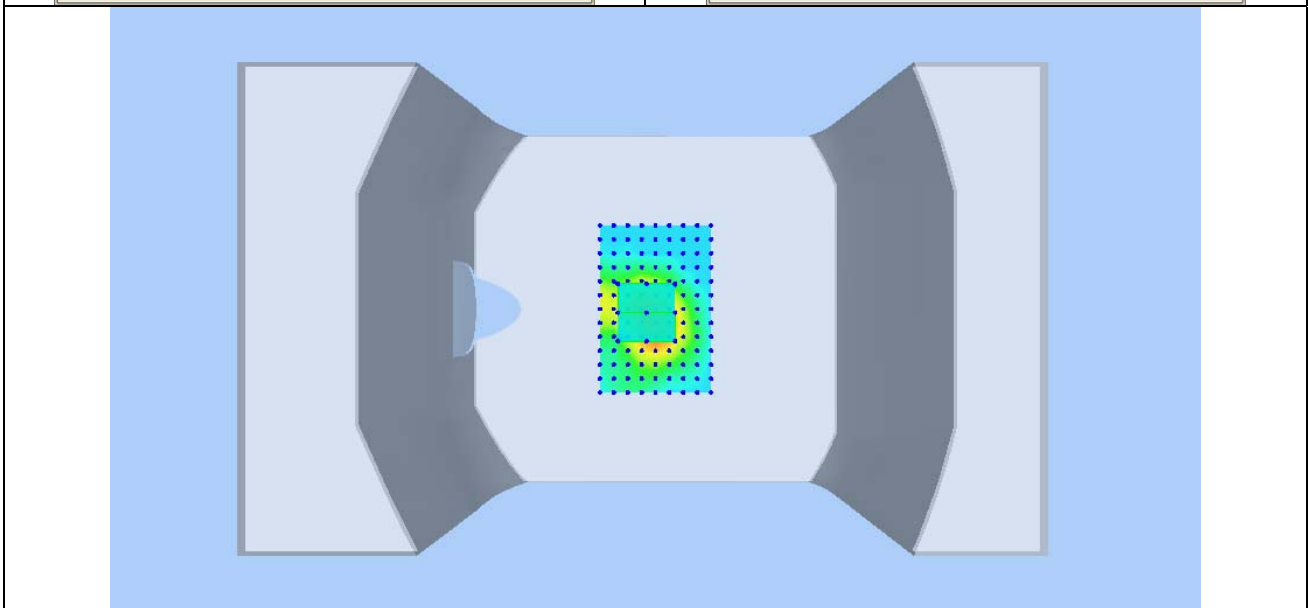
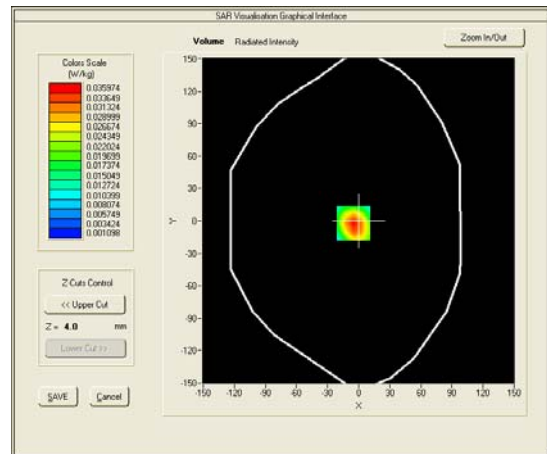
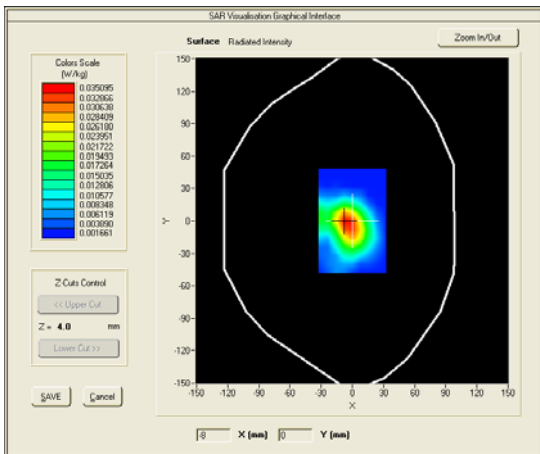
Test mode: 802.11b, middle channel (Body LCD UP, edge front)

Product Description: GSM/WCDMA MOBILE PHONE

Model: M4 SS1090

Test Date: May 27th, 2013

Medium(liquid type)	MSL_2450
Frequency (MHz)	2437.0000
Relative permittivity (real part)	53.793
Conductivity (S/m)	1.923
E-Field Probe	SN 18/11 EPG123
Crest factor	1.0
Conversion Factor	8.16
Sensor-Surface	4mm
Area Scan	dx=8mm dy=8mm
Zoom Scan	7x7x7,dx=5mm dy=5mm dz=5mm
Variation (%)	-0.75000
SAR 10g (W/Kg)	0.016801
SAR 1g (W/Kg)	0.035575
<b>SURFACE SAR</b>	<b>VOLUME SAR</b>



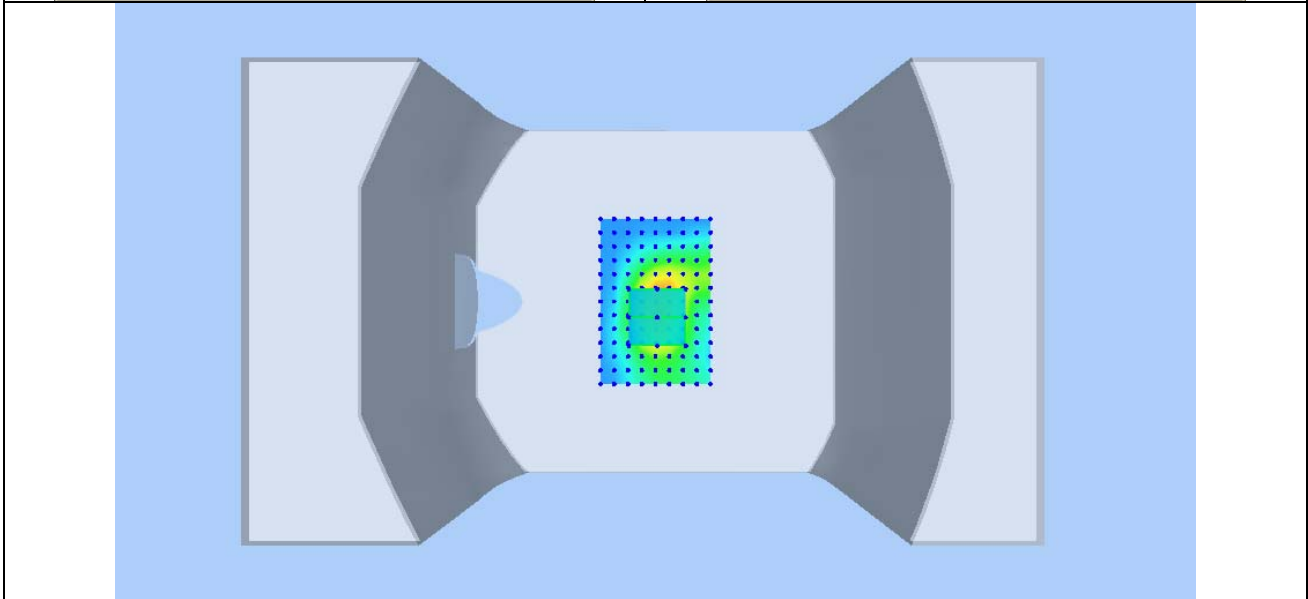
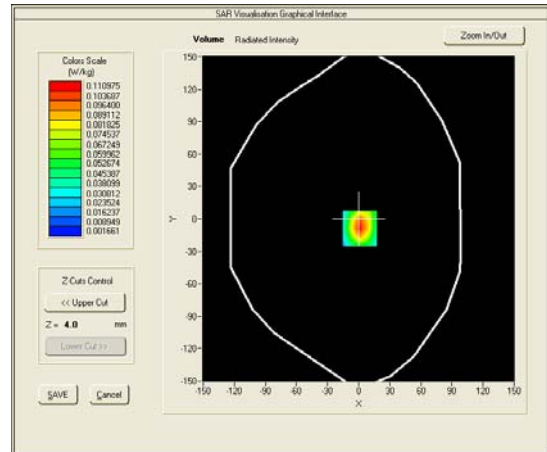
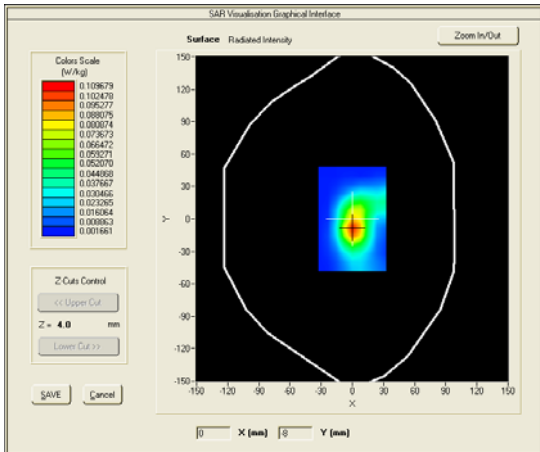
Test mode: 802.11b, middle channel (Body LCD Down, edge back)

Product Description: GSM/WCDMA MOBILE PHONE

Model: M4 SS1090

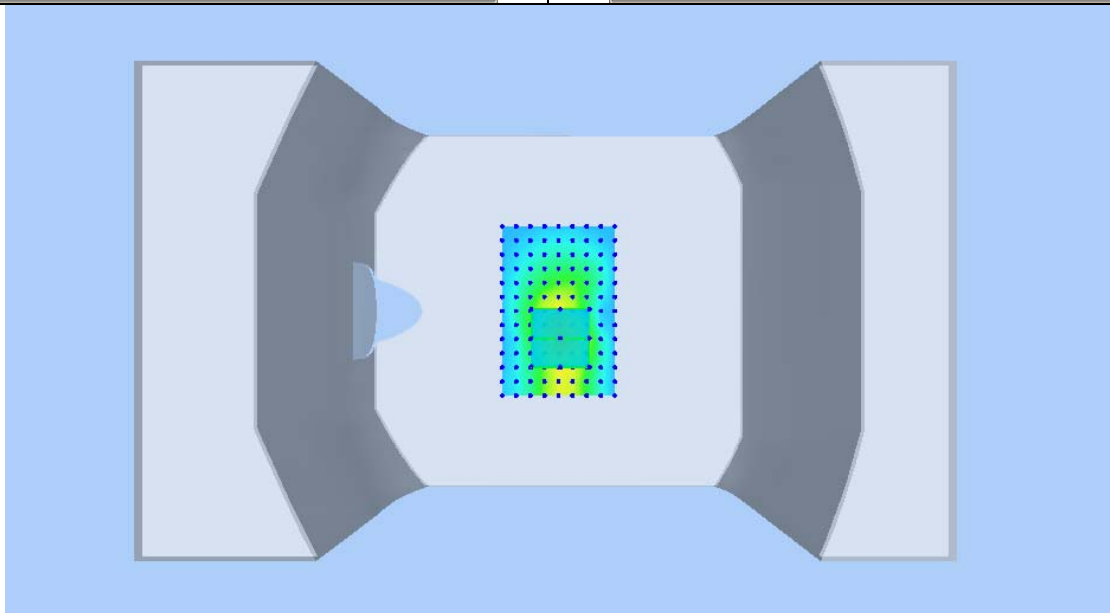
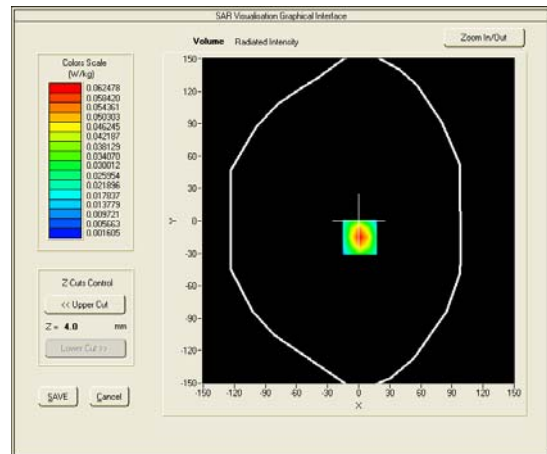
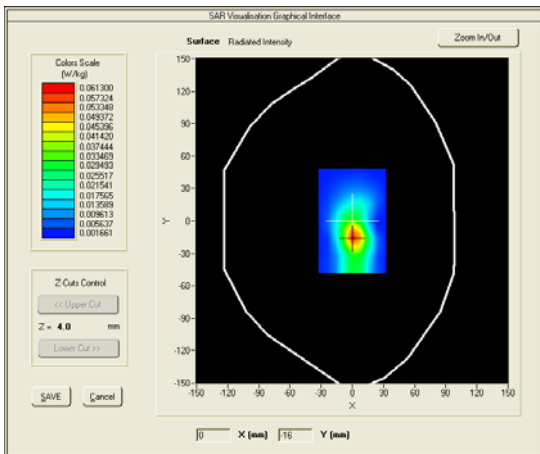
Test Date: May 27th, 2013

Medium(liquid type)	MSL_2450
Frequency (MHz)	2437.0000
Relative permittivity (real part)	53.793
Conductivity (S/m)	1.923
E-Field Probe	SN 18/11 EPG123
Crest factor	1.0
Conversion Factor	8.16
Sensor-Surface	4mm
Area Scan	dx=8mm dy=8mm
Zoom Scan	7x7x7,dx=5mm dy=5mm dz=5mm
Variation (%)	-0.39000
SAR 10g (W/Kg)	0.049351
SAR 1g (W/Kg)	0.106683
<b>SURFACE SAR</b>	<b>VOLUME SAR</b>



**Test mode: 802.11b, middle channel (Body, edge right)**  
**Product Description: GSM/WCDMA MOBILE PHONE**  
**Model: M4 SS1090**  
**Test Date: May 27th, 2013**

Medium(liquid type)	MSL_2450
Frequency (MHz)	2437.0000
Relative permittivity (real part)	53.793
Conductivity (S/m)	1.923
E-Field Probe	SN 18/11 EPG123
Crest factor	1.0
Conversion Factor	8.16
Sensor-Surface	4mm
Area Scan	dx=8mm dy=8mm
Zoom Scan	7x7x7,dx=5mm dy=5mm dz=5mm
Variation (%)	0.33000
SAR 10g (W/Kg)	0.027248
SAR 1g (W/Kg)	0.059529
<b>SURFACE SAR</b>	<b>VOLUME SAR</b>



Test mode: 802.11b, middle channel (Body, edge top)  
 Product Description: GSM/WCDMA MOBILE PHONE  
 Model: M4 SS1090  
 Test Date: May 27th, 2013

Medium(liquid type)	MSL_2450
Frequency (MHz)	2437.0000
Relative permittivity (real part)	53.793
Conductivity (S/m)	1.923
E-Field Probe	SN 18/11 EPG123
Crest factor	1.0
Conversion Factor	8.16
Sensor-Surface	4mm
Area Scan	dx=8mm dy=8mm
Zoom Scan	7x7x7,dx=5mm dy=5mm dz=5mm
Variation (%)	-3.95000
SAR 10g (W/Kg)	0.014382
SAR 1g (W/Kg)	0.030710
<b>SURFACE SAR</b>	<b>VOLUME SAR</b>

