

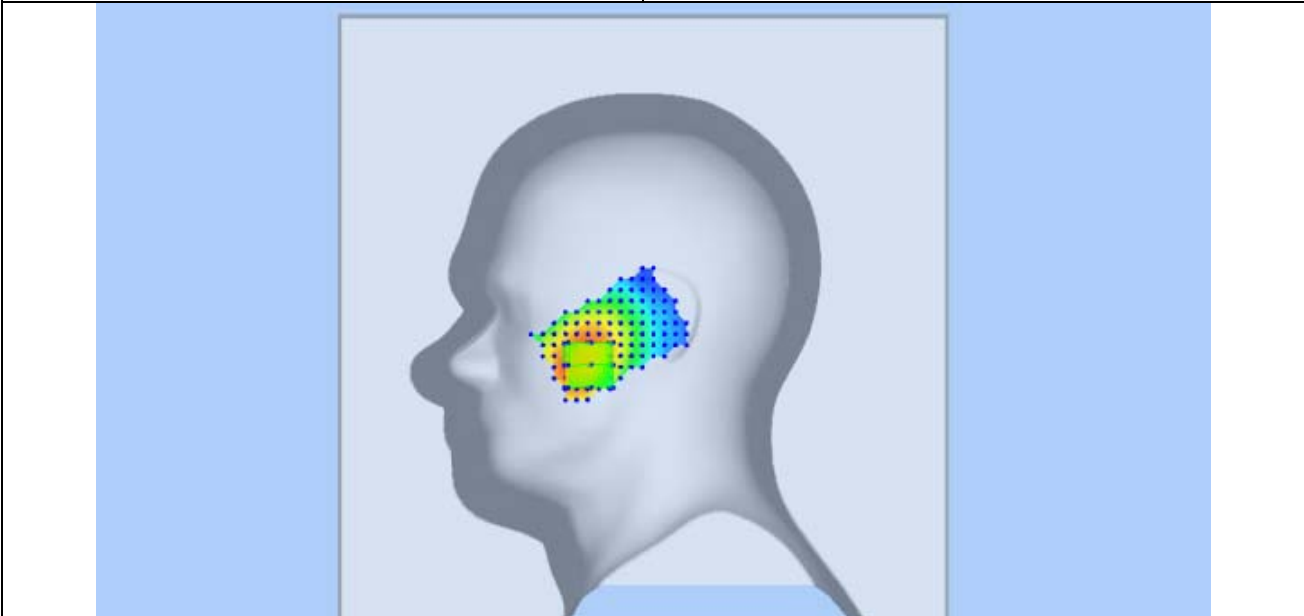
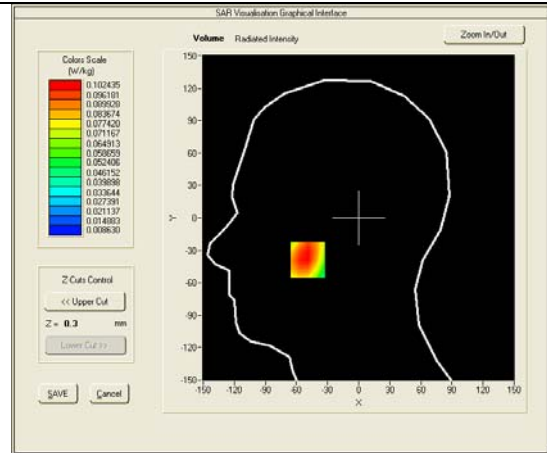
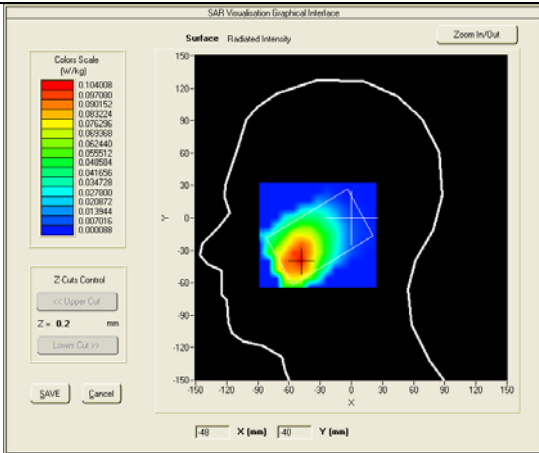
### SAR measurement Plots

Test mode: GSM850, Middle channel (Right Head Cheek)  
 Product Description: GSM/WCDMA MOBILE PHONE  
 Model: M4 SS1080  
 Test Date: May 25th, 2013

Medium(liquid type)	HSL_850
Frequency (MHz)	836.6000
Relative permittivity (real part)	40.777
Conductivity (S/m)	0.899
E-Field Probe	SN 18/11 EPG123
Crest factor	8.0
Conversion Factor	7.53
Sensor-Surface	4mm
Area Scan	dx=8mm dy=8mm
Zoom Scan	5x5x7,dx=8mm dy=8mm dz=5mm
Variation (%)	-4.41000
SAR 10g (W/Kg)	0.072762
SAR 1g (W/Kg)	0.100000

#### SURFACE SAR

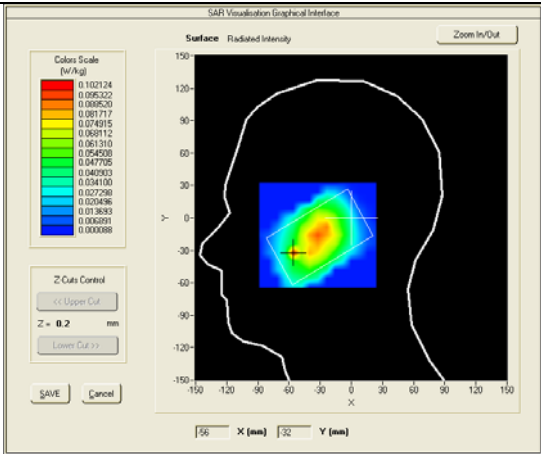
#### VOLUME SAR



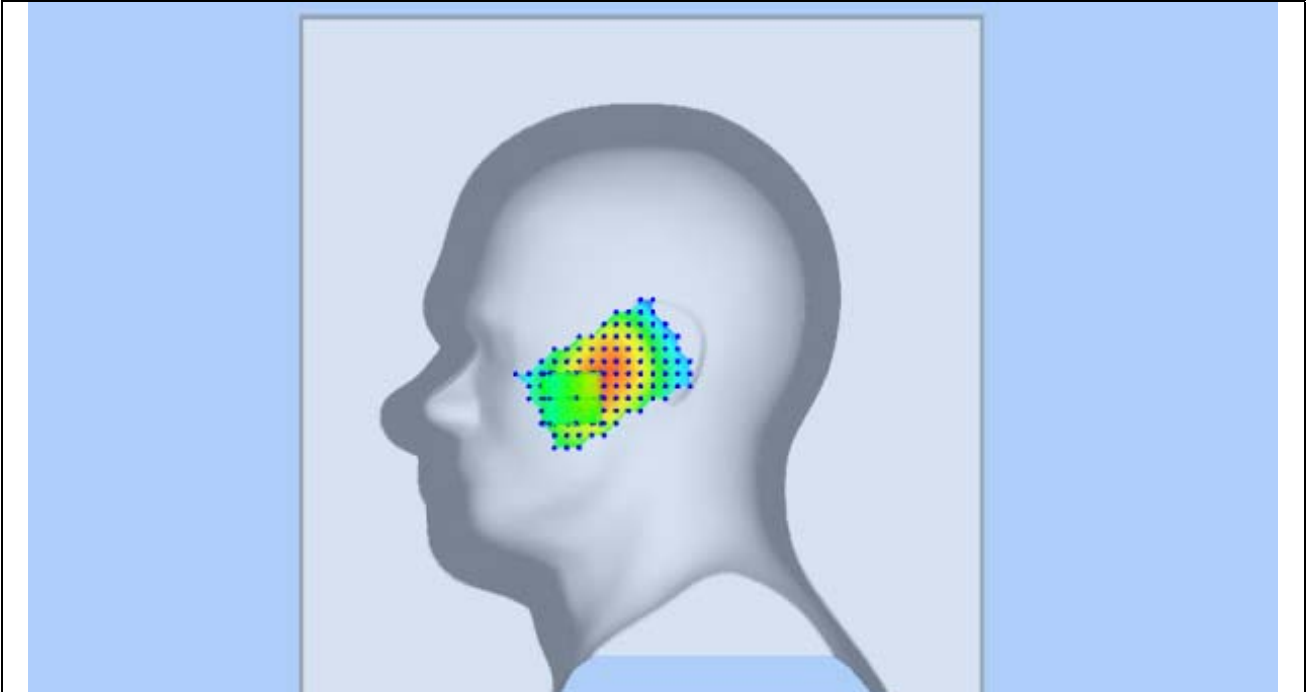
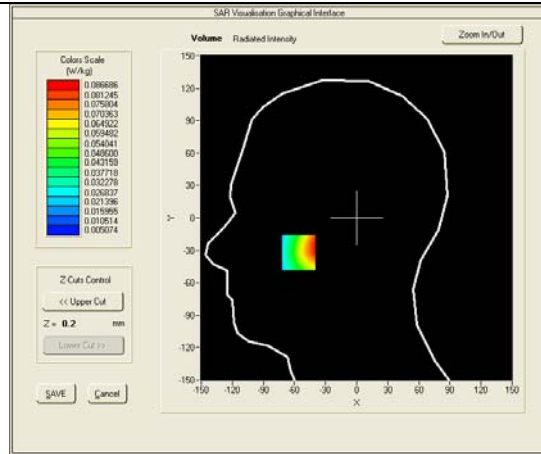
Test mode: GSM850, Middle channel (Right Head Tilt)  
 Product Description: GSM/WCDMA MOBILE PHONE  
 Model: M4 SS1080  
 Test Date: May 25th, 2013

Medium(liquid type)	HSL_850
Frequency (MHz)	836.6000
Relative permittivity (real part)	40.777
Conductivity (S/m)	0.899
E-Field Probe	SN 18/11 EPG123
Crest factor	8.0
Conversion Factor	7.53
Sensor-Surface	4mm
Area Scan	dx=8mm dy=8mm
Zoom Scan	5x5x7,dx=8mm dy=8mm dz=5mm
Variation (%)	0.44000
SAR 10g (W/Kg)	0.054246
SAR 1g (W/Kg)	0.080136

**SURFACE SAR**



**VOLUME SAR**

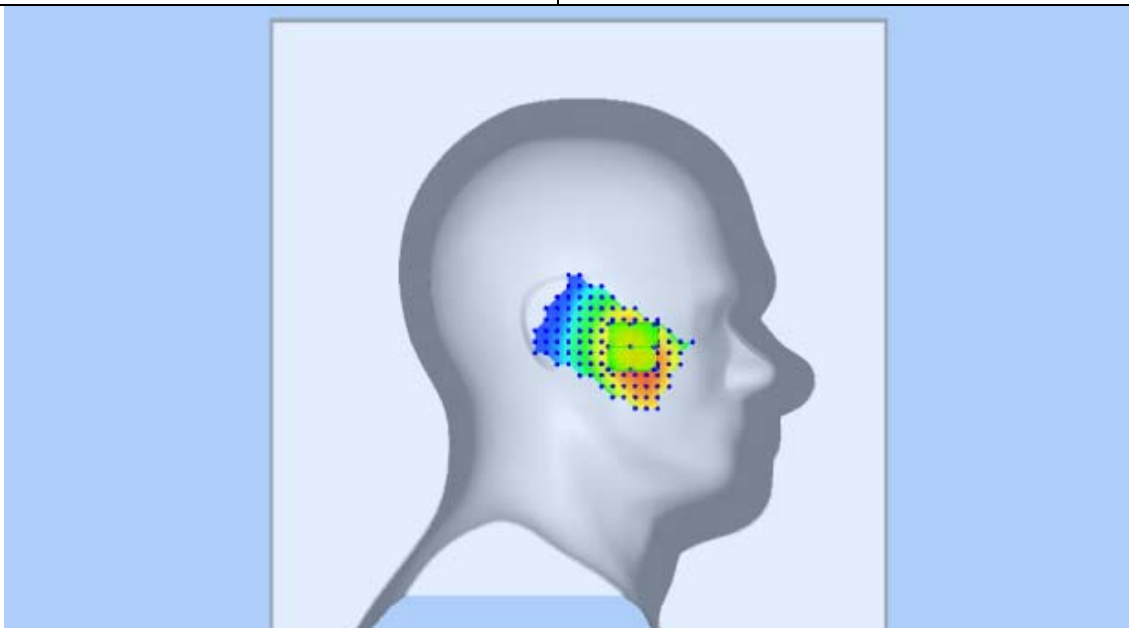
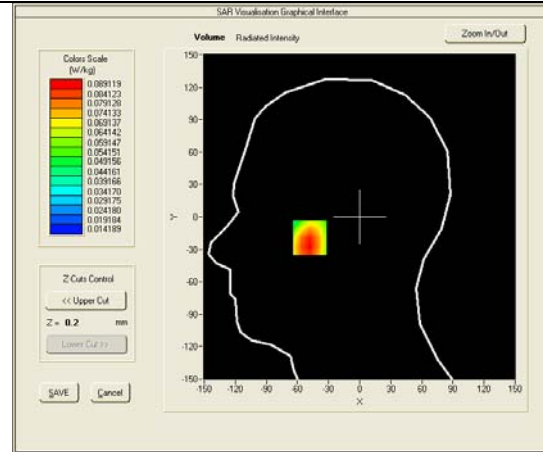
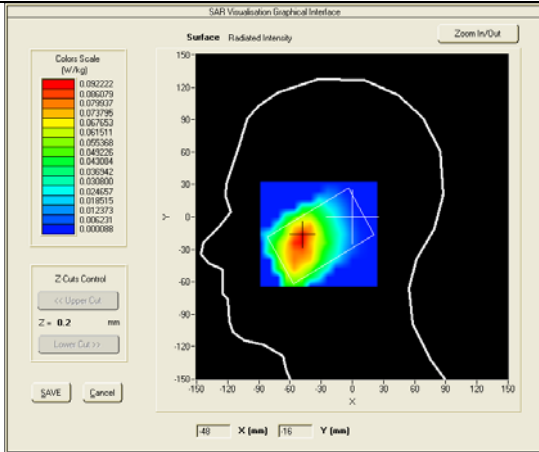


Test mode: GSM850, Middle channel (Left Head Cheek)  
 Product Description: GSM/WCDMA MOBILE PHONE  
 Model: M4 SS1080  
 Test Date: May 25th, 2013

Medium(liquid type)	HSL_850
Frequency (MHz)	836.6000
Relative permittivity (real part)	40.777
Conductivity (S/m)	0.899
E-Field Probe	SN 18/11 EPG123
Crest factor	8.0
Conversion Factor	7.53
Sensor-Surface	4mm
Area Scan	dx=8mm dy=8mm
Zoom Scan	5x5x7,dx=8mm dy=8mm dz=5mm
Variation (%)	-4.69000
SAR 10g (W/Kg)	0.063271
SAR 1g (W/Kg)	0.086009

**SURFACE SAR**

**VOLUME SAR**

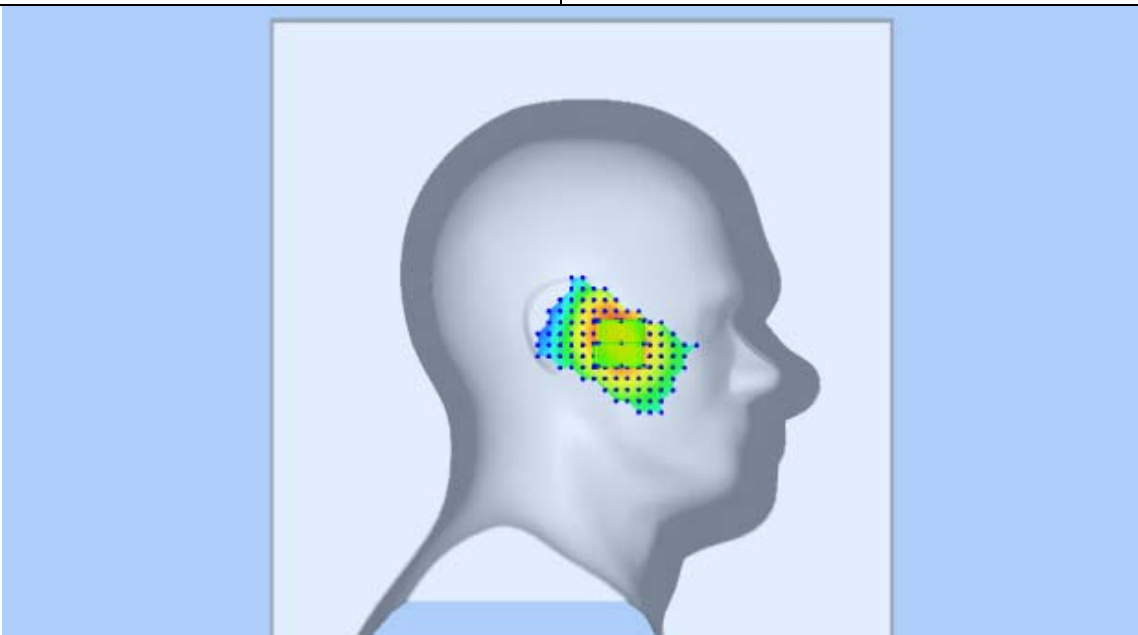
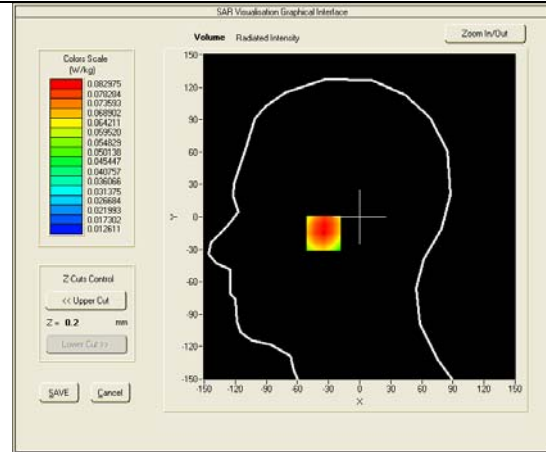
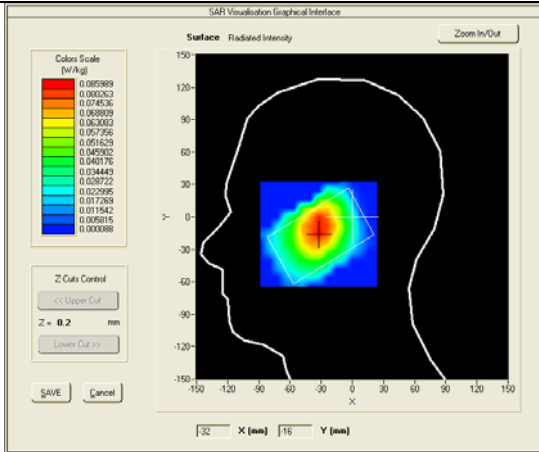


Test mode: GSM850, Middle channel (Left Head Tilt)  
 Product Description: GSM/WCDMA MOBILE PHONE  
 Model: M4 SS1080  
 Test Date: May 25th, 2013

Medium(liquid type)	HSL_850
Frequency (MHz)	836.6000
Relative permittivity (real part)	40.777
Conductivity (S/m)	0.899
E-Field Probe	SN 18/11 EPG123
Crest factor	8.0
Conversion Factor	7.53
Sensor-Surface	4mm
Area Scan	dx=8mm dy=8mm
Zoom Scan	5x5x7,dx=8mm dy=8mm dz=5mm
Variation (%)	2.52000
SAR 10g (W/Kg)	0.059170
SAR 1g (W/Kg)	0.080679

### SURFACE SAR

### VOLUME SAR

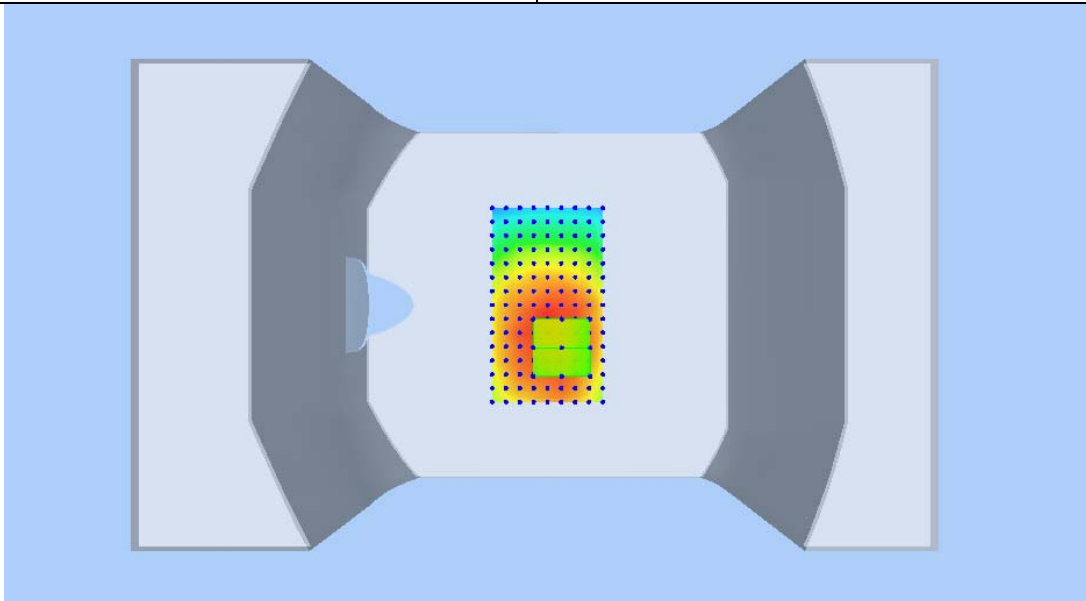
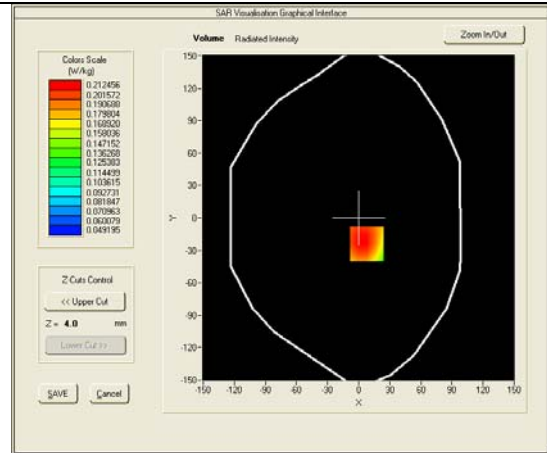
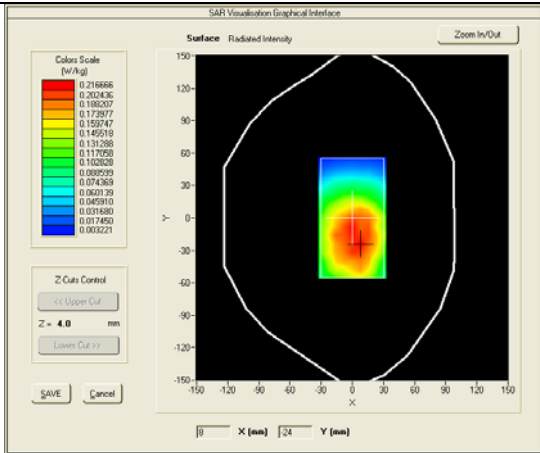


Test mode: GPRS850, Middle channel (Body-LCD UP, Edge front)  
 Product Description: GSM/WCDMA MOBILE PHONE  
 Model: M4 SS1080  
 Test Date: May 25th, 2013

Medium(liquid type)	MSL_850
Frequency (MHz)	836.6000
Relative permittivity (real part)	53.339
Conductivity (S/m)	0.981
E-Field Probe	SN 18/11 EPG123
Crest factor	2.0
Conversion Factor	7.75
Area Scan	dx=8mm dy=8mm
Zoom Scan	5x5x7,dx=8mm dy=8mm dz=5mm
Variation (%)	-2.39000
SAR 10g (W/Kg)	0.158112
SAR 1g (W/Kg)	0.211271

**SURFACE SAR**

**VOLUME SAR**

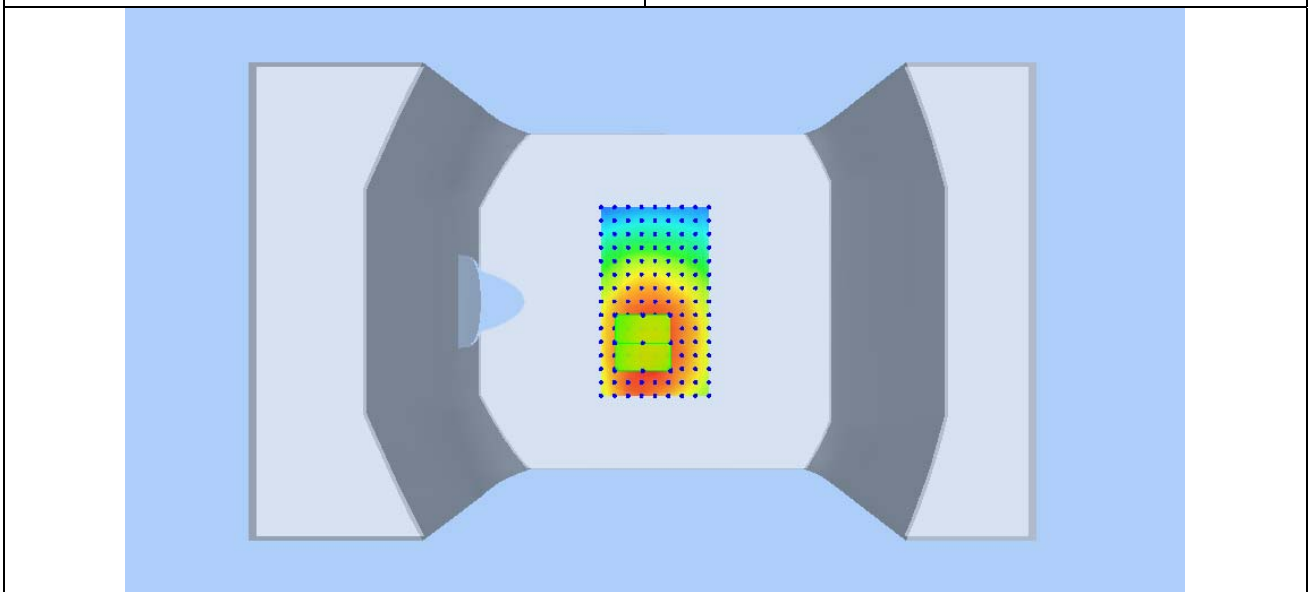
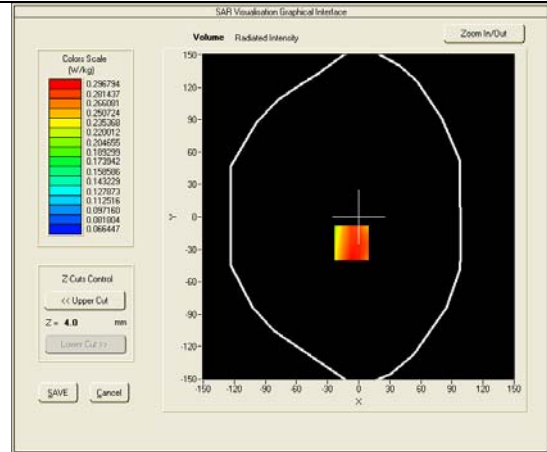
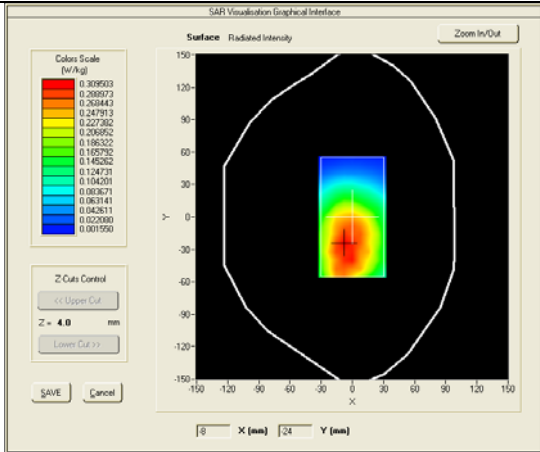


Test mode: GPRS850, Middle channel (Body-LCD DOWN, edge back)  
 Product Description: GSM/WCDMA MOBILE PHONE  
 Model: M4 SS1080  
 Test Date: May 25th, 2013

Medium(liquid type)	MSL_850
Frequency (MHz)	836.6000
Relative permittivity (real part)	53.339
Conductivity (S/m)	0.981
E-Field Probe	SN 18/11 EPG123
Crest factor	2.0
Conversion Factor	7.75
Sensor-Surface	4mm
Area Scan	dx=8mm dy=8mm
Zoom Scan	5x5x7, dx=8mm dy=8mm dz=5mm
Variation (%)	2.23000
SAR 10g (W/Kg)	0.219181
SAR 1g (W/Kg)	0.289668

**SURFACE SAR**

**VOLUME SAR**

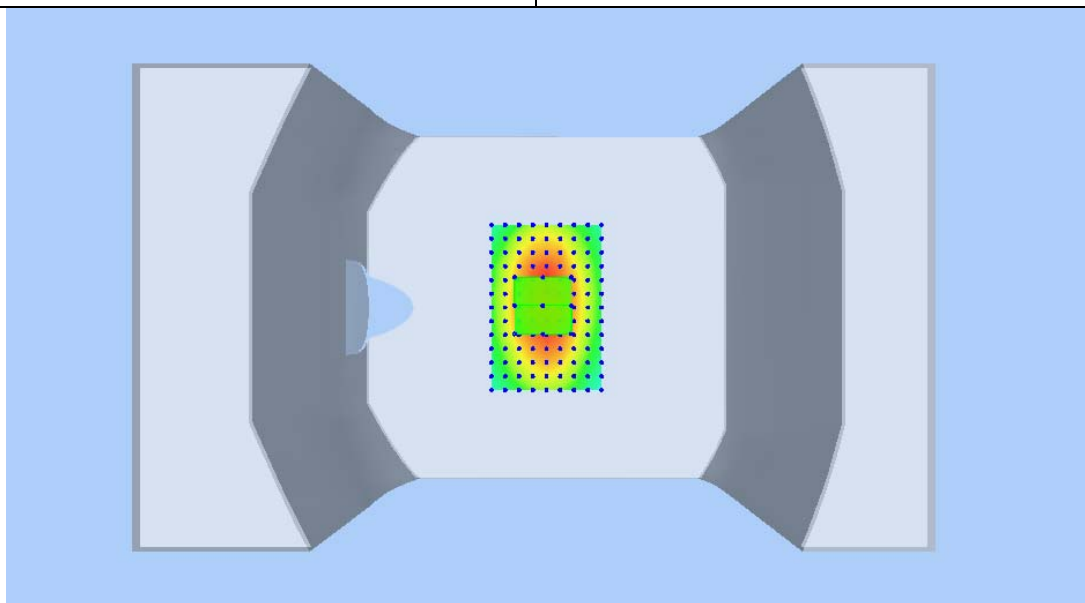
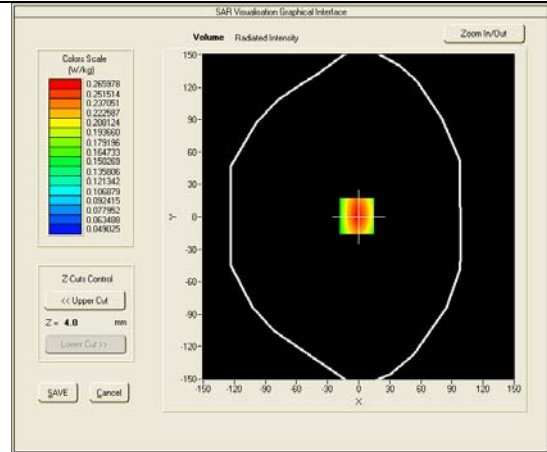
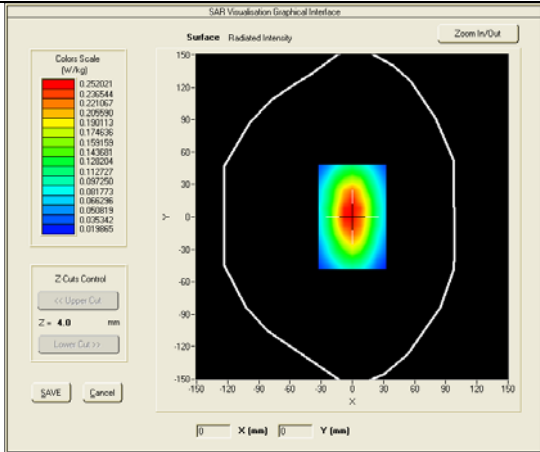


Test mode: GPRS850, Middle channel (Body- edge right)  
 Product Description: GSM/WCDMA MOBILE PHONE  
 Model: M4 SS1080  
 Test Date: May 25th, 2013

Medium(liquid type)	MSL_850
Frequency (MHz)	836.6000
Relative permittivity (real part)	53.339
Conductivity (S/m)	0.981
E-Field Probe	SN 18/11 EPG123
Crest factor	2.0
Conversion Factor	7.75
Sensor-Surface	4mm
Area Scan	dx=8mm dy=8mm
Zoom Scan	5x5x7, dx=8mm dy=8mm dz=5mm
Variation (%)	0.58000
SAR 10g (W/Kg)	0.171166
SAR 1g (W/Kg)	0.257272

**SURFACE SAR**

**VOLUME SAR**



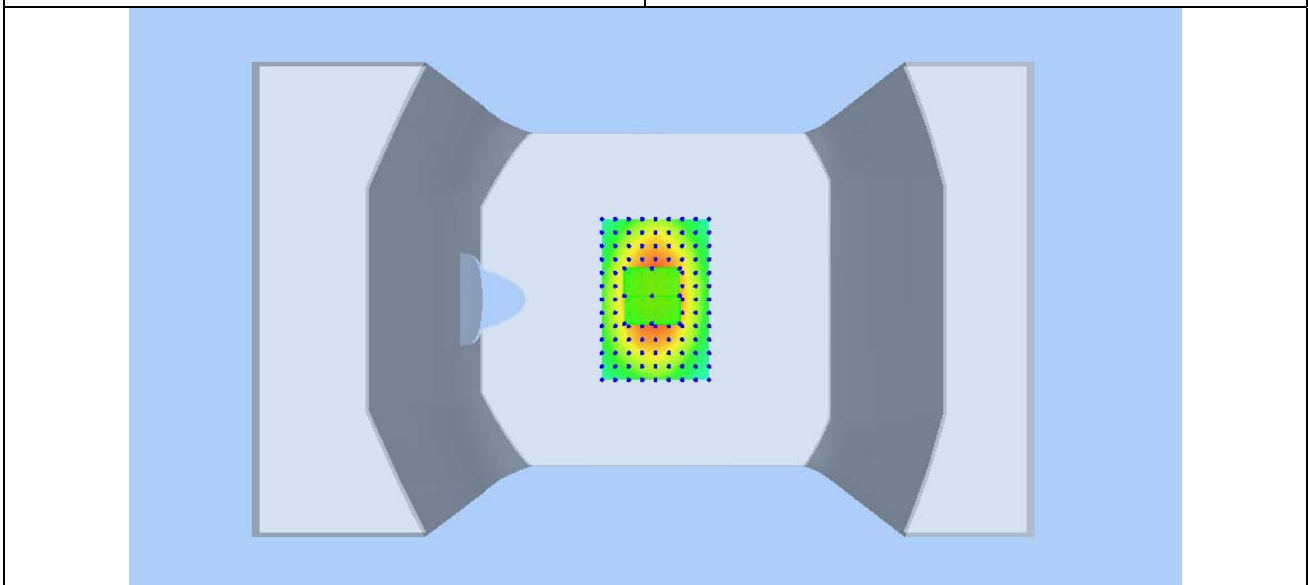
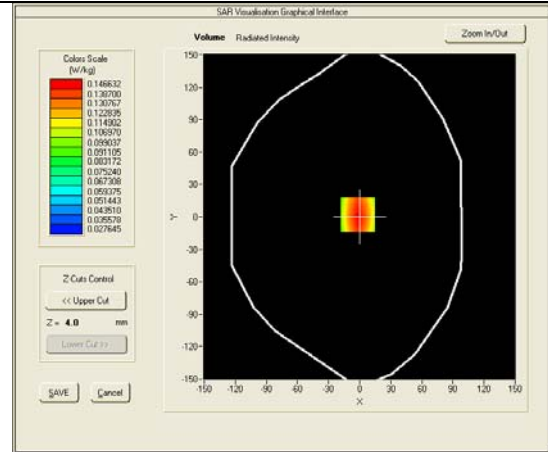
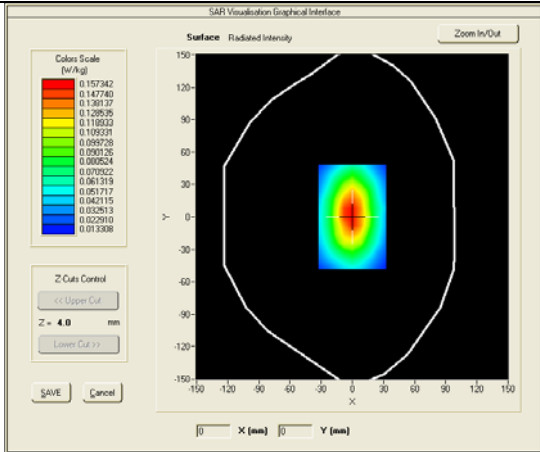


Test mode: GPRS850, Middle channel (Body-edge left)  
 Product Description: GSM/WCDMA MOBILE PHONE  
 Model: M4 SS1080  
 Test Date: May 25th, 2013

Medium(liquid type)	MSL_850
Frequency (MHz)	836.6000
Relative permittivity (real part)	53.339
Conductivity (S/m)	0.981
E-Field Probe	SN 18/11 EPG123
Crest factor	2.0
Conversion Factor	7.75
Sensor-Surface	4mm
Area Scan	dx=8mm dy=8mm
Zoom Scan	5x5x7, dx=8mm dy=8mm dz=5mm
Variation (%)	-2.08000
SAR 10g (W/Kg)	0.097631
SAR 1g (W/Kg)	0.142516

**SURFACE SAR**

**VOLUME SAR**



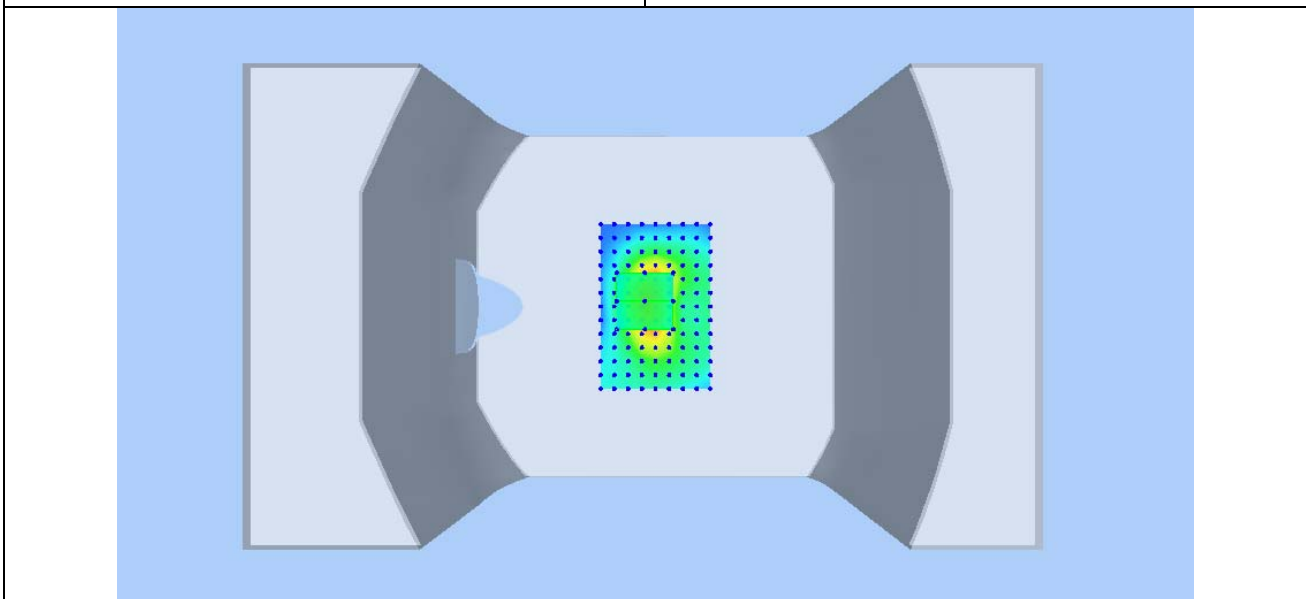
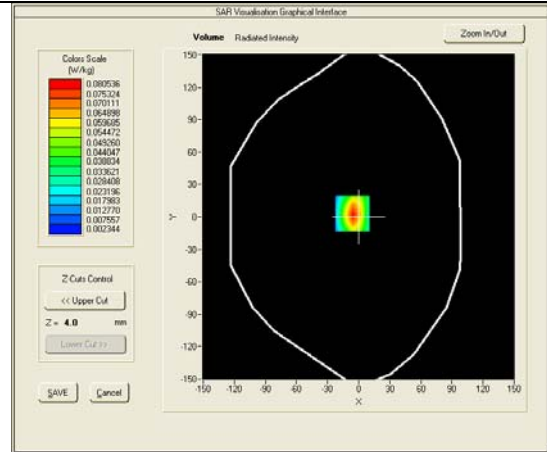
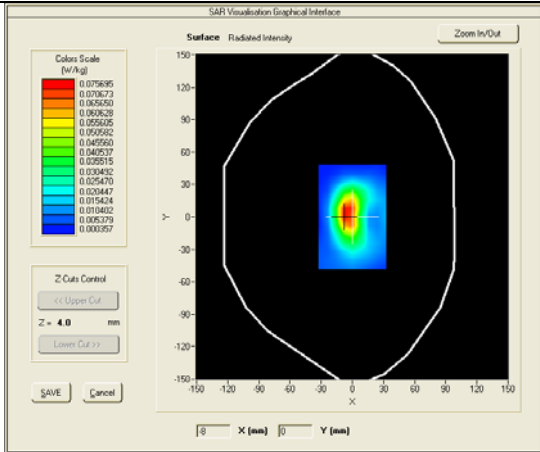


Test mode: GPRS850, Middle channel (Body-edge bottom)  
 Product Description: GSM/WCDMA MOBILE PHONE  
 Model: M4 SS1080  
 Test Date: May 25th, 2013

Medium(liquid type)	MSL_850
Frequency (MHz)	836.6000
Relative permittivity (real part)	53.339
Conductivity (S/m)	0.981
E-Field Probe	SN 18/11 EPG123
Crest factor	2.0
Conversion Factor	7.75
Sensor-Surface	4mm
Area Scan	dx=8mm dy=8mm
Zoom Scan	5x5x7, dx=8mm dy=8mm dz=5mm
Variation (%)	-2.76000
SAR 10g (W/Kg)	0.039949
SAR 1g (W/Kg)	0.074981

**SURFACE SAR**

**VOLUME SAR**

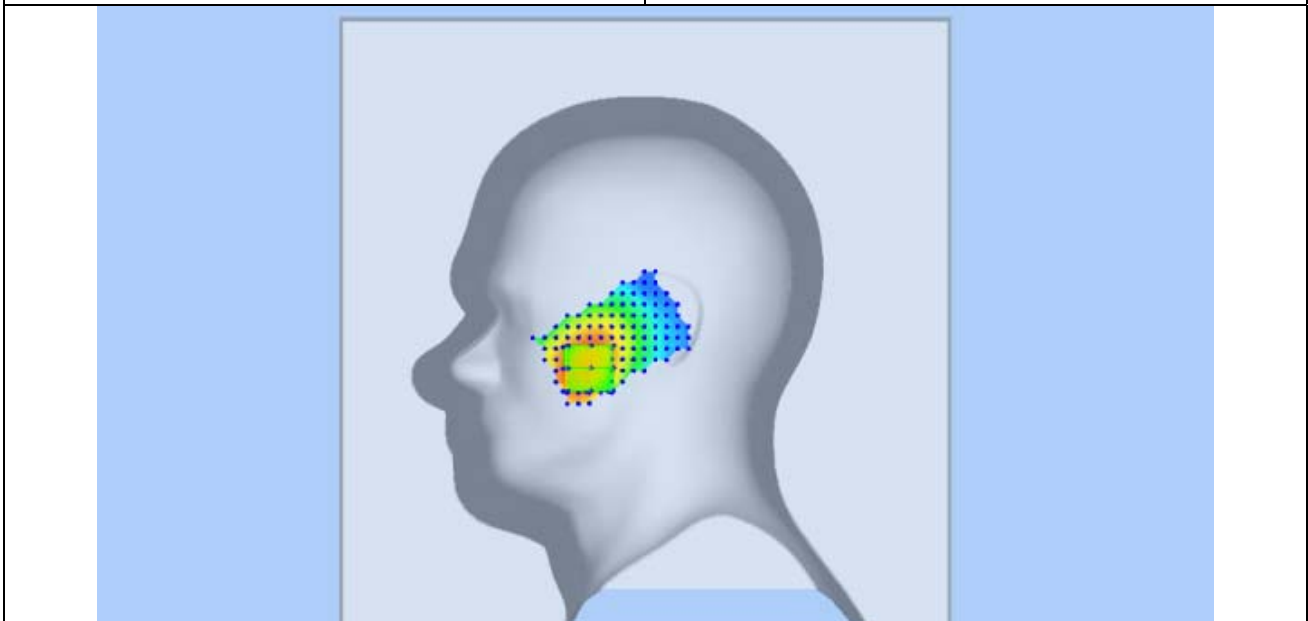
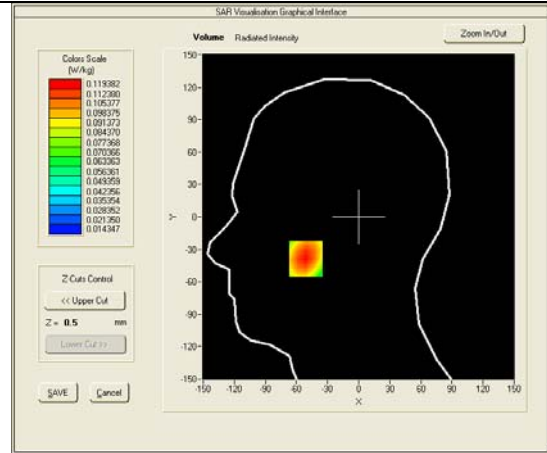
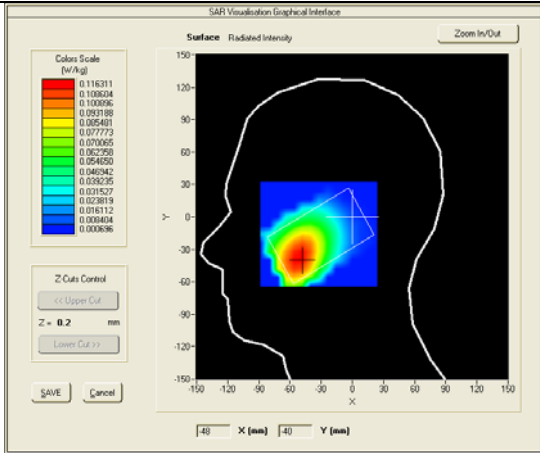


Test mode: WCDMA BAND V , middle channel (Right Head Cheek)  
 Product Description: GSM/WCDMA MOBILE PHONE  
 Model: M4 SS1080  
 Test Date: May 25th, 2013

Medium(liquid type)	HSL_850
Frequency (MHz)	835.0000
Relative permittivity (real part)	40.777
Conductivity (S/m)	0.899
E-Field Probe	SN 18/11 EPG123
Crest factor	1.0
Conversion Factor	8.78
Sensor-Surface	4mm
Area Scan	dx=8mm dy=8mm
Zoom Scan	5x5x7, dx=8mm dy=8mm dz=5mm
Variation (%)	1.97000
SAR 10g (W/Kg)	0.086502
SAR 1g (W/Kg)	0.115018

**SURFACE SAR**

**VOLUME SAR**

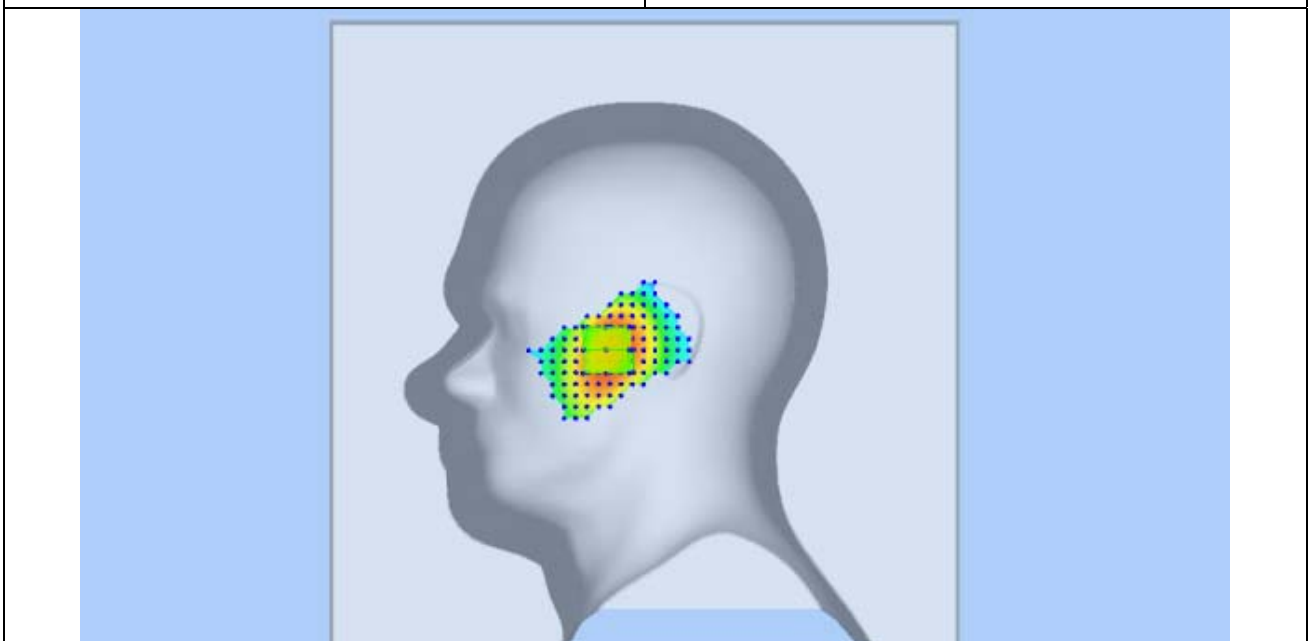
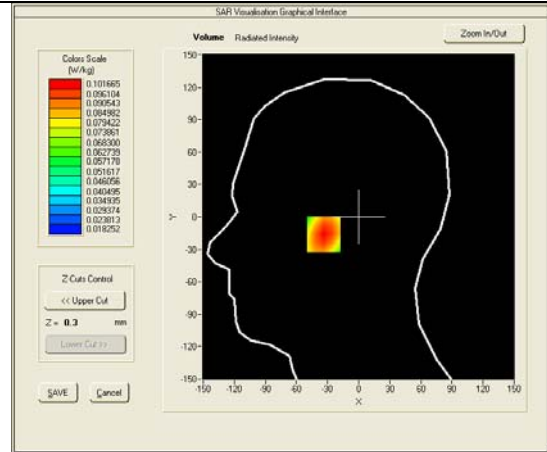
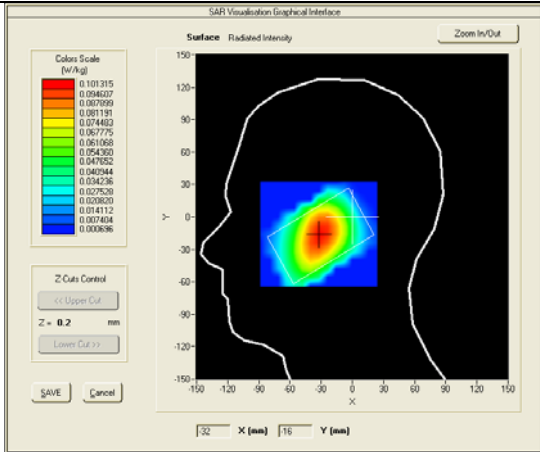


Test mode: WCDMA BAND V , middle channel (Right Head Tilt)  
 Product Description: GSM/WCDMA MOBILE PHONE  
 Model: M4 SS1080  
 Test Date: May 25th, 2013

Medium(liquid type)	HSL_850
Frequency (MHz)	835.0000
Relative permittivity (real part)	40.777
Conductivity (S/m)	0.899
E-Field Probe	SN 18/11 EPG123
Crest factor	1.0
Conversion Factor	8.78
Sensor-Surface	4mm
Area Scan	dx=8mm dy=8mm
Zoom Scan	5x5x7, dx=8mm dy=8mm dz=5mm
Variation (%)	0.48000
SAR 10g (W/Kg)	0.074301
SAR 1g (W/Kg)	0.098068

**SURFACE SAR**

**VOLUME SAR**

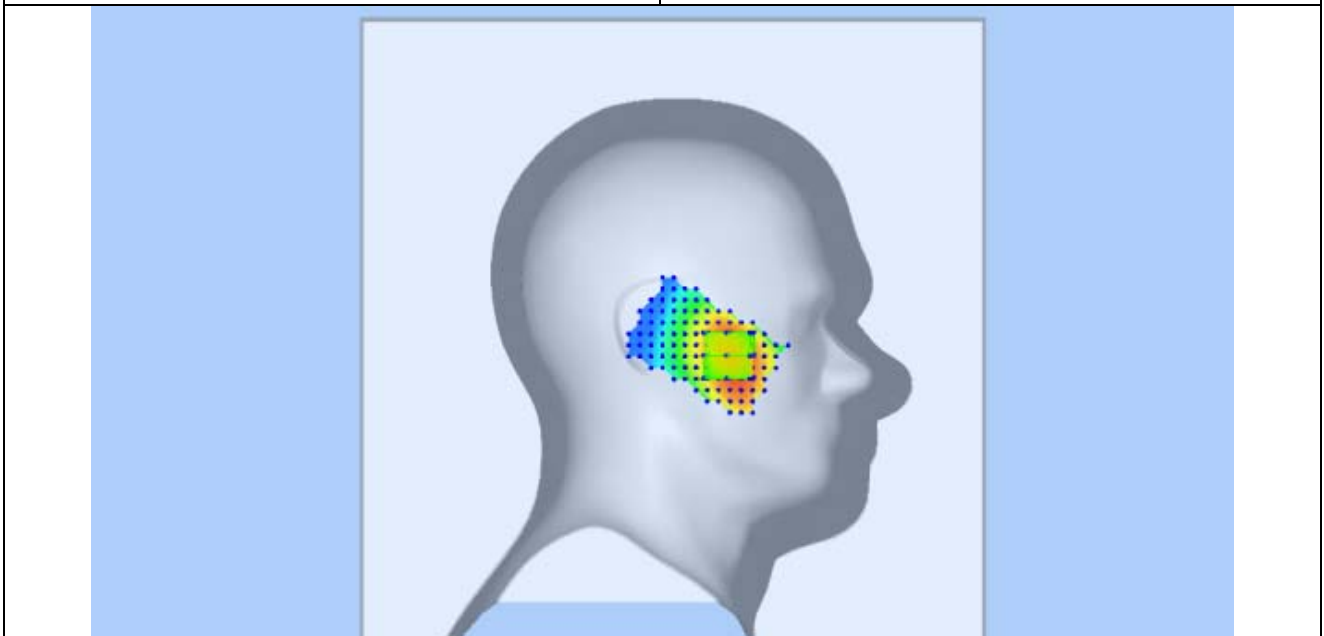
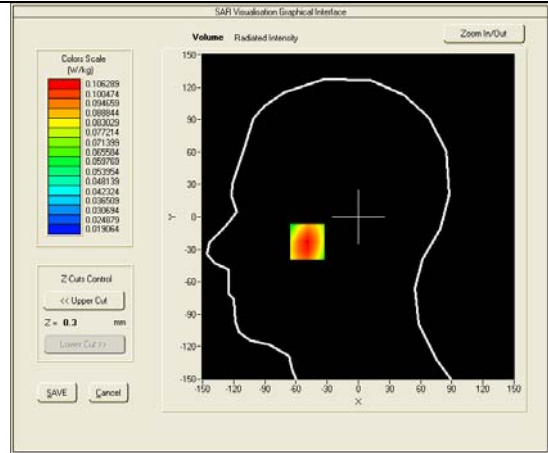
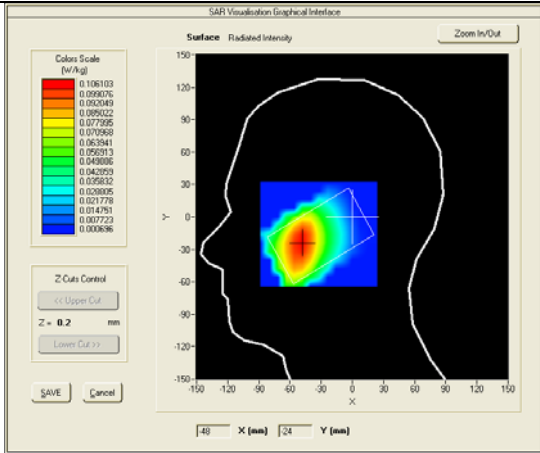


Test mode: WCDMA BAND V , middle channel (Left Head Cheek)  
 Product Description: GSM/WCDMA MOBILE PHONE  
 Model: M4 SS1080  
 Test Date: May 25th, 2013

Medium(liquid type)	HSL_850
Frequency (MHz)	835.0000
Relative permittivity (real part)	40.777
Conductivity (S/m)	0.899
E-Field Probe	SN 18/11 EPG123
Crest factor	1.0
Conversion Factor	8.78
Sensor-Surface	4mm
Area Scan	dx=8mm dy=8mm
Zoom Scan	5x5x7,dx=8mm dy=8mm dz=5mm
Variation (%)	0.91000
SAR 10g (W/Kg)	0.077545
SAR 1g (W/Kg)	0.102786

**SURFACE SAR**

**VOLUME SAR**

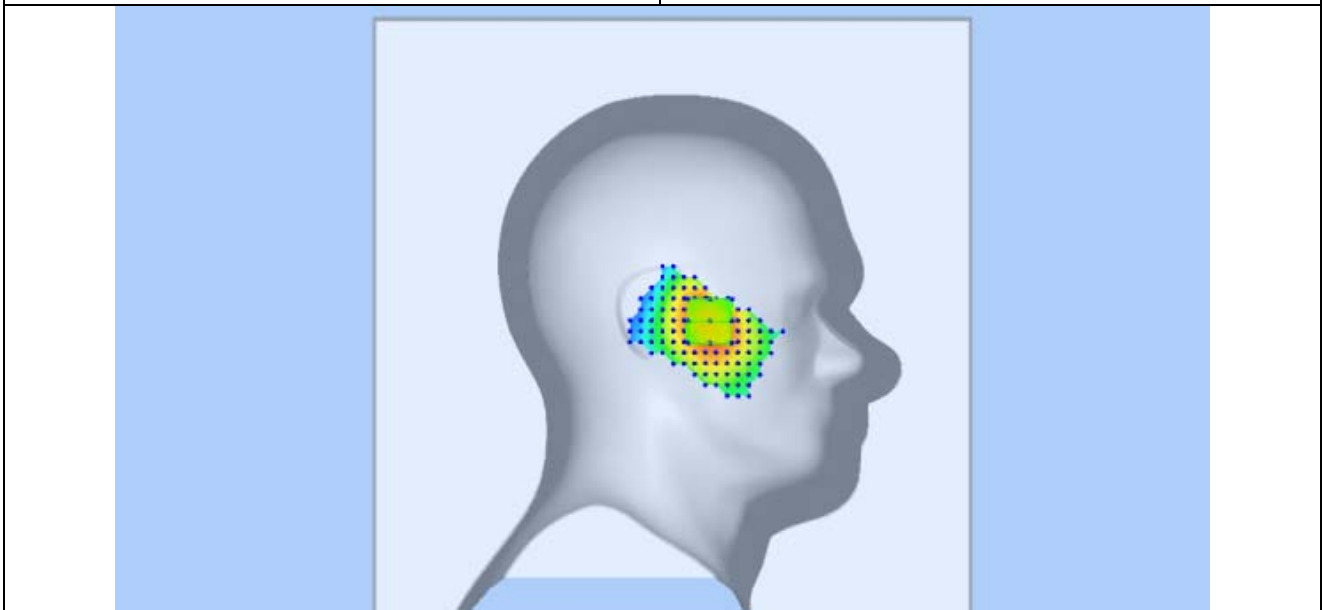
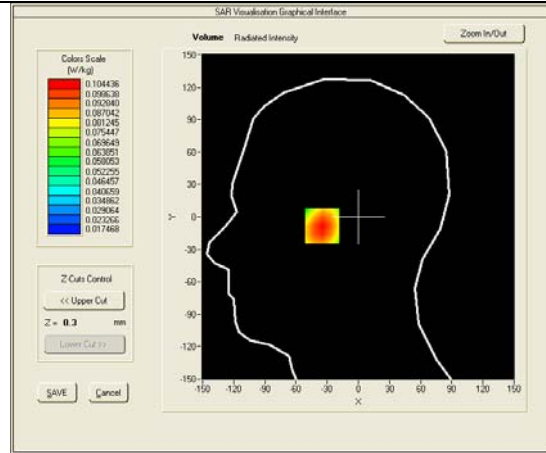
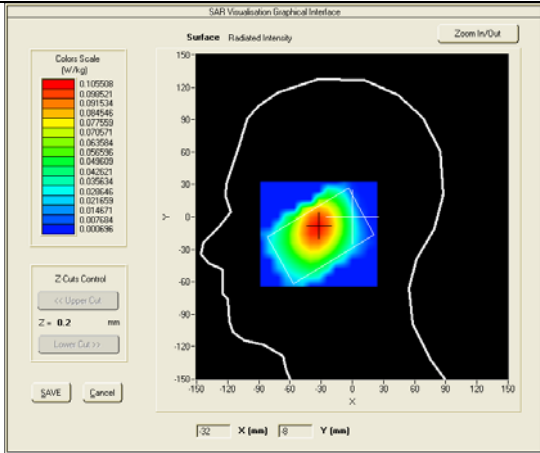


Test mode: WCDMA BAND V , middle channel (Left Head Tilt)  
 Product Description: GSM/WCDMA MOBILE PHONE  
 Model: M4 SS1080  
 Test Date: May 25th, 2013

Medium(liquid type)	HSL_850
Frequency (MHz)	835.0000
Relative permittivity (real part)	40.777
Conductivity (S/m)	0.899
E-Field Probe	SN 18/11 EPG123
Crest factor	1.0
Conversion Factor	8.78
Sensor-Surface	4mm
Area Scan	dx=8mm dy=8mm
Zoom Scan	5x5x7,dx=8mm dy=8mm dz=5mm
Variation (%)	-0.44000
SAR 10g (W/Kg)	0.076063
SAR 1g (W/Kg)	0.100730

**SURFACE SAR**

**VOLUME SAR**

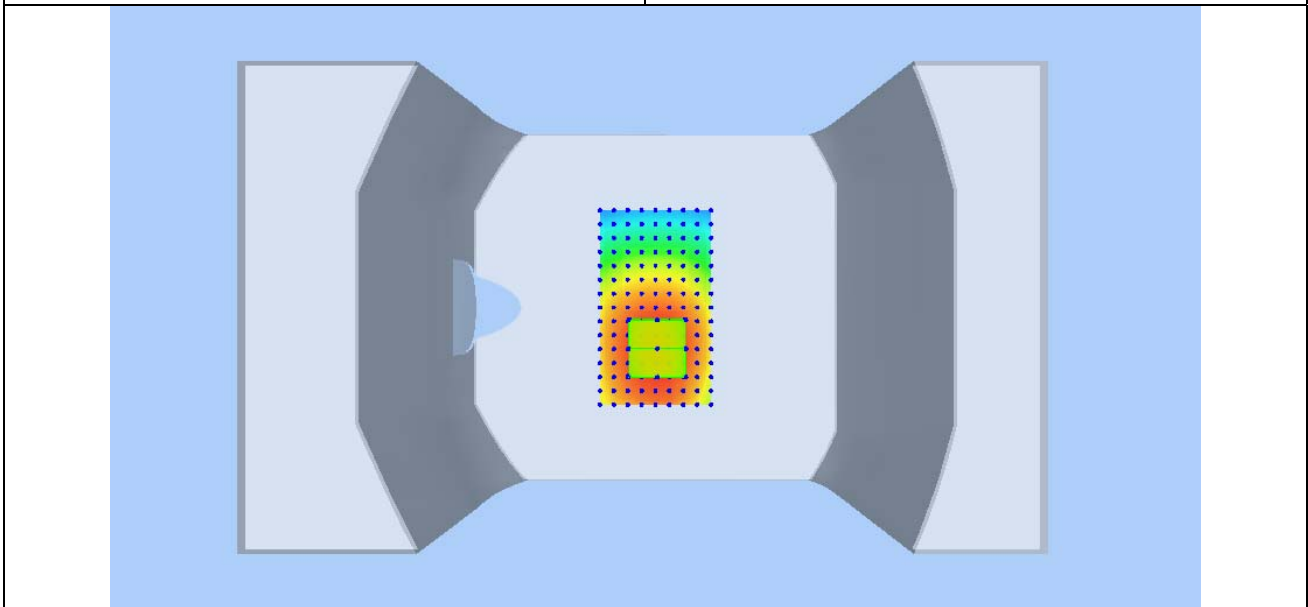
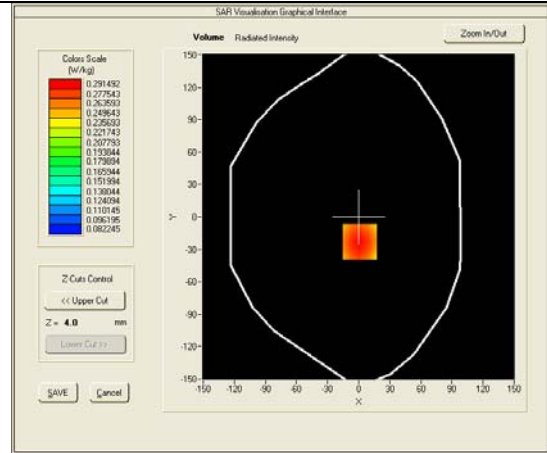
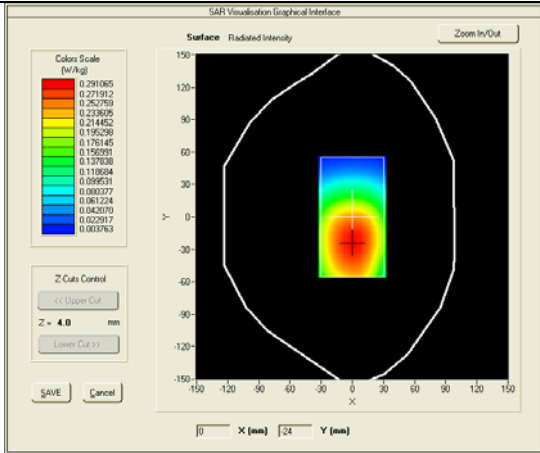


Test mode: WCDMA BAND V , middle channel (Body-LCD UP, edge front)  
 Product Description: GSM/WCDMA MOBILE PHONE  
 Model: M4 SS1080  
 Test Date: May 25th, 2013

Medium(liquid type)	MSL_850
Frequency (MHz)	835.0000
Relative permittivity (real part)	53.339
Conductivity (S/m)	0.981
E-Field Probe	SN 18/11 EPG123
Crest factor	1.0
Conversion Factor	9.07
Sensor-Surface	4mm
Area Scan	dx=8mm dy=8mm
Zoom Scan	5x5x7, dx=8mm dy=8mm dz=5mm
Variation (%)	0.13000
SAR 10g (W/Kg)	0.230928
SAR 1g (W/Kg)	0.304262

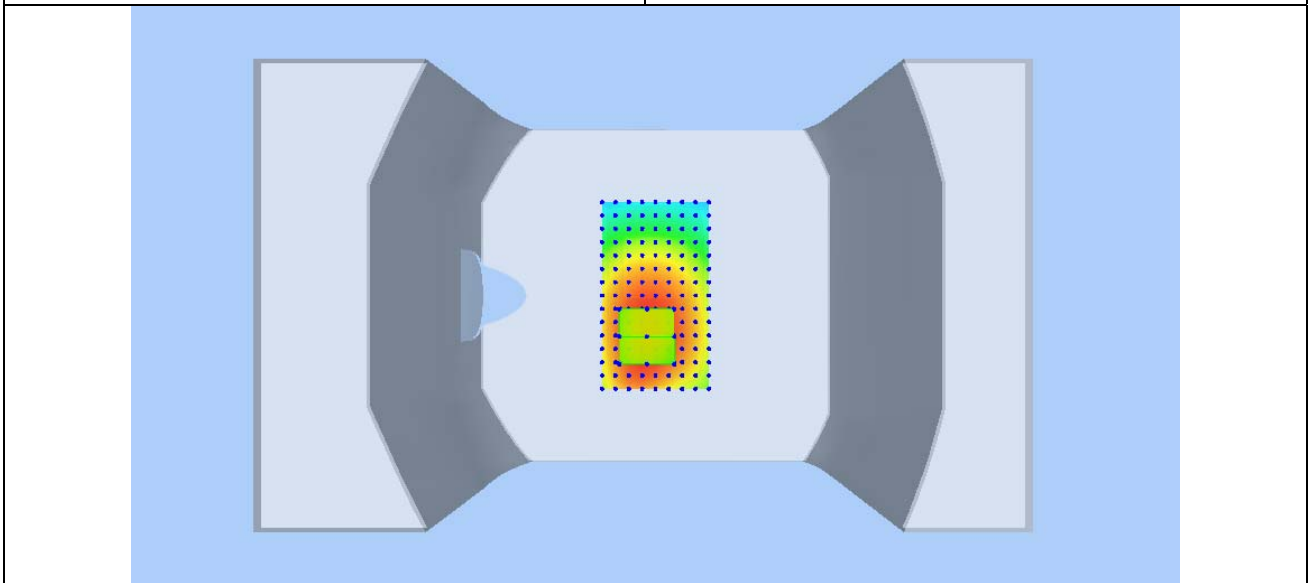
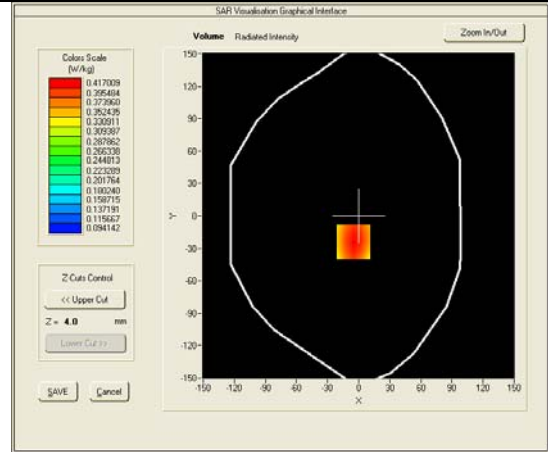
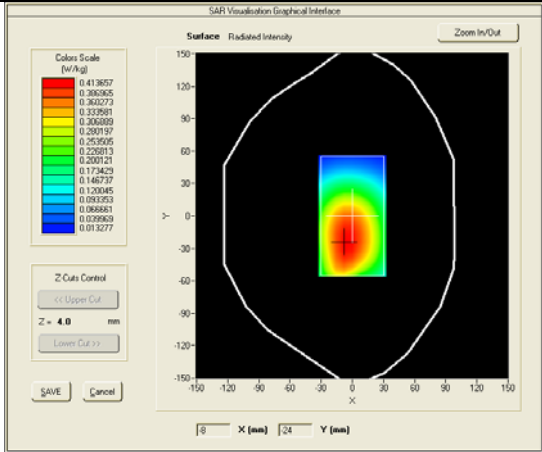
**SURFACE SAR**

**VOLUME SAR**



Test mode: WCDMA BAND V , middle channel (Body-LCD DOWN, edge back)  
 Product Description: GSM/WCDMA MOBILE PHONE  
 Model: M4 SS1080  
 Test Date: May 25th, 2013

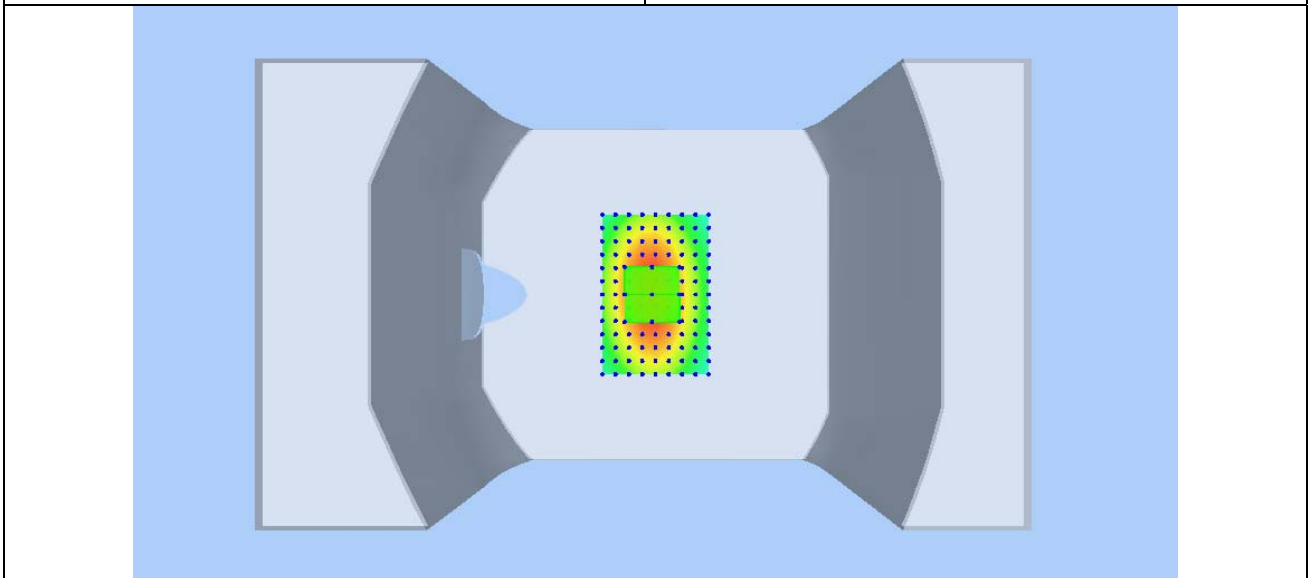
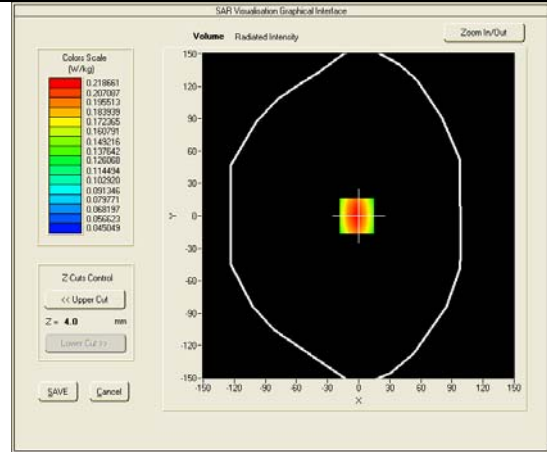
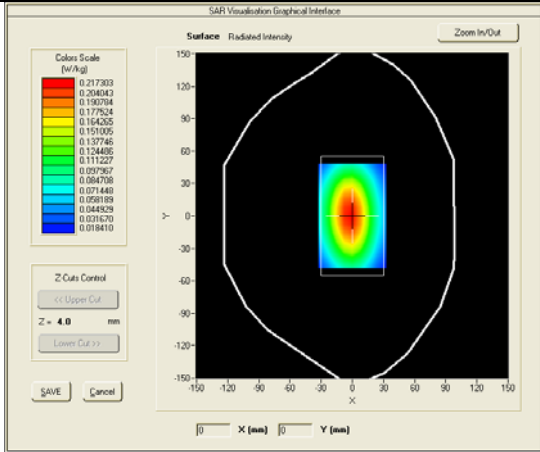
Medium(liquid type)	MSL_850
Frequency (MHz)	835.0000
Relative permittivity (real part)	53.339
Conductivity (S/m)	0.981
E-Field Probe	SN 18/11 EPG123
Crest factor	1.0
Conversion Factor	9.07
Sensor-Surface	4mm
Area Scan	dx=8mm dy=8mm
Zoom Scan	5x5x7,dx=8mm dy=8mm dz=5mm
Variation (%)	0.24000
SAR 10g (W/Kg)	0.327713
SAR 1g (W/Kg)	0.434791
<b>SURFACE SAR</b>	<b>VOLUME SAR</b>





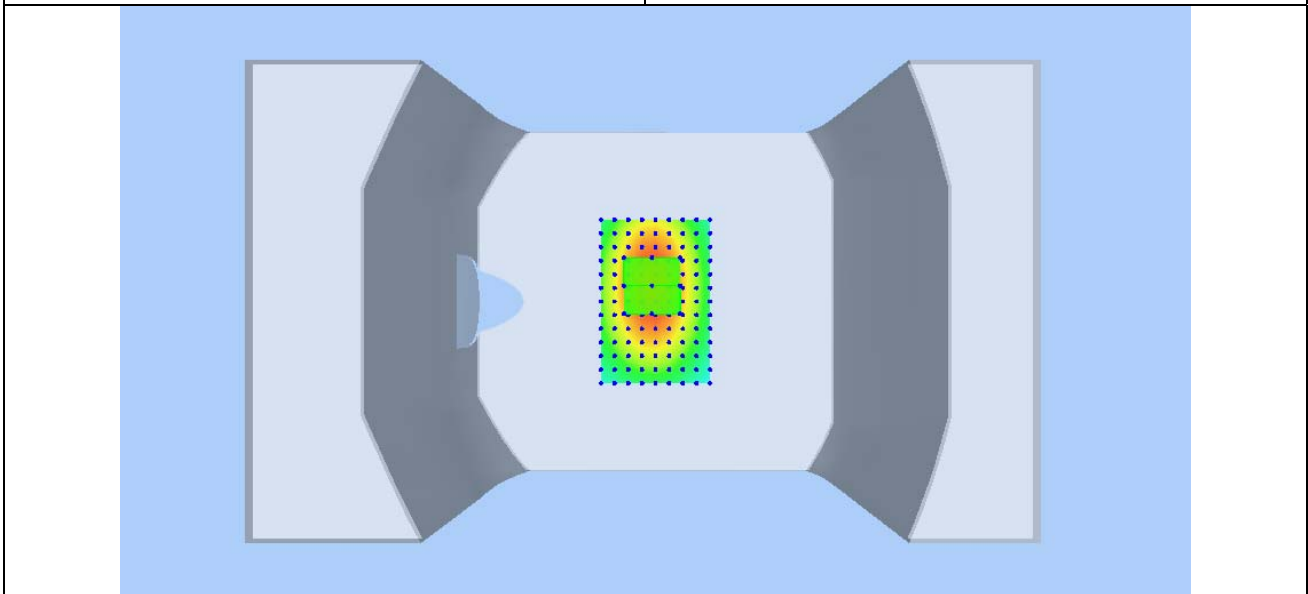
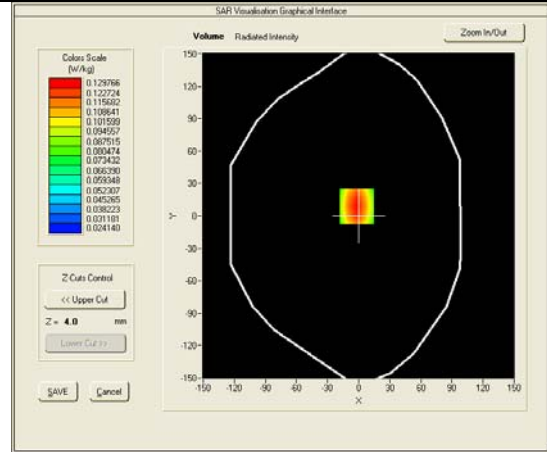
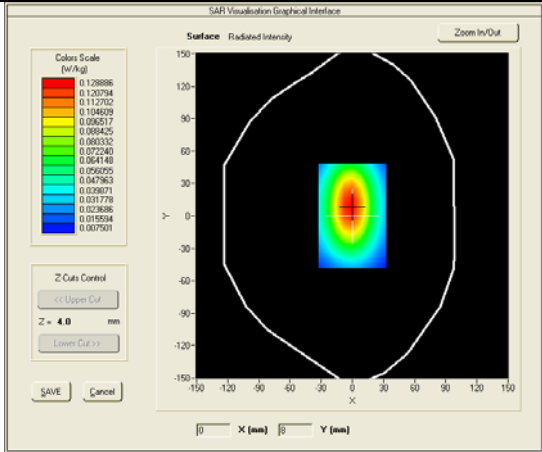
Test mode: WCDMA BAND V , middle channel (Body, edge right)  
 Product Description: GSM/WCDMA MOBILE PHONE  
 Model: M4 SS1080  
 Test Date: May 25th, 2013

Medium(liquid type)	MSL_850
Frequency (MHz)	835.0000
Relative permittivity (real part)	53.339
Conductivity (S/m)	0.981
E-Field Probe	SN 18/11 EPG123
Crest factor	1.0
Conversion Factor	9.07
Sensor-Surface	4mm
Area Scan	dx=8mm dy=8mm
Zoom Scan	5x5x7, dx=8mm dy=8mm dz=5mm
Variation (%)	0.39000
SAR 10g (W/Kg)	0.153679
SAR 1g (W/Kg)	0.224719
<b>SURFACE SAR</b>	<b>VOLUME SAR</b>



Test mode: WCDMA BAND V , middle channel (Body, edge left)  
 Product Description: GSM/WCDMA MOBILE PHONE  
 Model: M4 SS1080  
 Test Date: May 25th, 2013

Medium(liquid type)	MSL_850
Frequency (MHz)	835.0000
Relative permittivity (real part)	53.339
Conductivity (S/m)	0.981
E-Field Probe	SN 18/11 EPG123
Crest factor	1.0
Conversion Factor	9.07
Sensor-Surface	4mm
Area Scan	dx=8mm dy=8mm
Zoom Scan	5x5x7,dx=8mm dy=8mm dz=5mm
Variation (%)	-0.33000
SAR 10g (W/Kg)	0.090411
SAR 1g (W/Kg)	0.133320
<b>SURFACE SAR</b>	<b>VOLUME SAR</b>

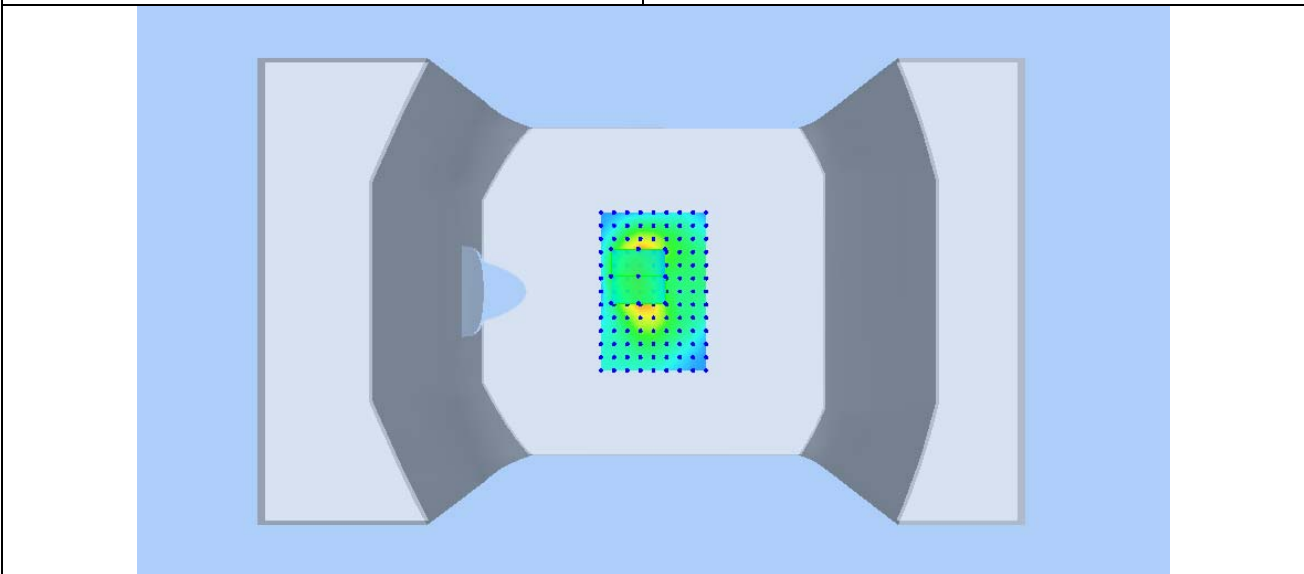
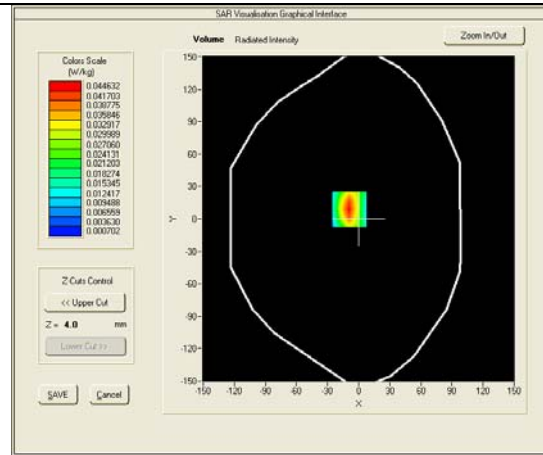
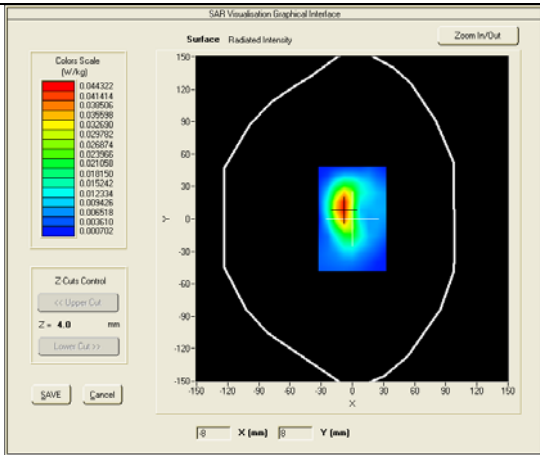


Test mode: WCDMA BAND V , middle channel (Body, edge bottom)  
 Product Description: GSM/WCDMA MOBILE PHONE  
 Model: M4 SS1080  
 Test Date: May 25th, 2013

Medium(liquid type)	MSL_850
Frequency (MHz)	835.0000
Relative permittivity (real part)	53.339
Conductivity (S/m)	0.981
E-Field Probe	SN 18/11 EPG123
Crest factor	1.0
Conversion Factor	9.07
Sensor-Surface	4mm
Area Scan	dx=8mm dy=8mm
Zoom Scan	5x5x7,dx=8mm dy=8mm dz=5mm
Variation (%)	0.10000
SAR 10g (W/Kg)	0.023498
SAR 1g (W/Kg)	0.044105

**SURFACE SAR**

**VOLUME SAR**

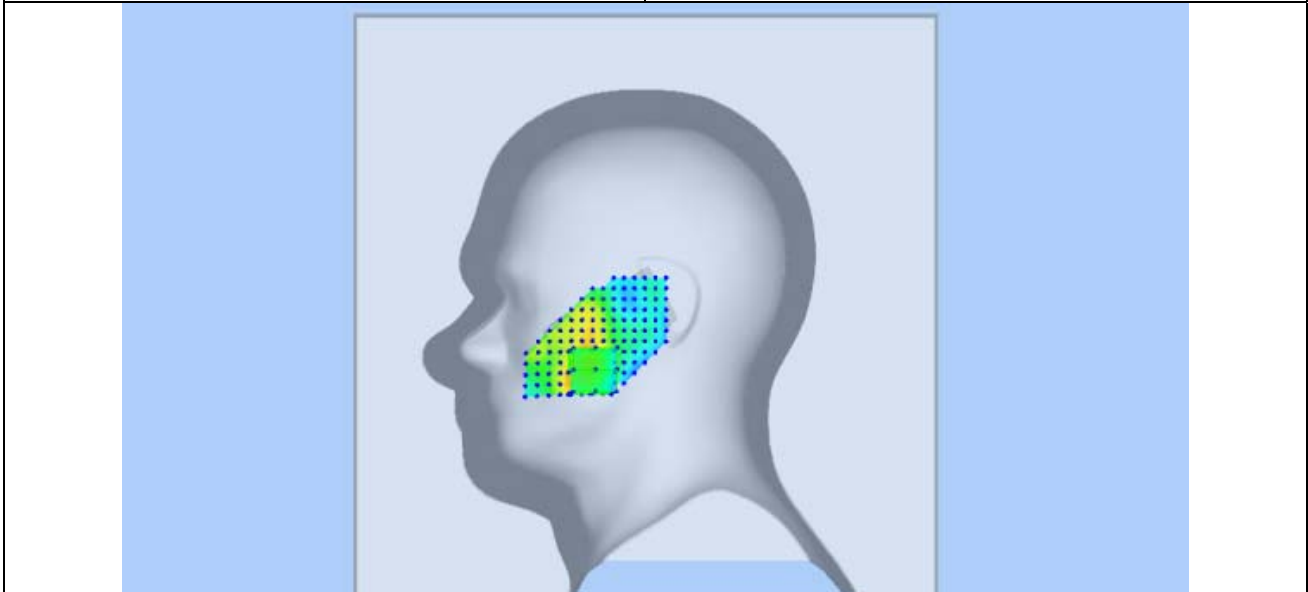
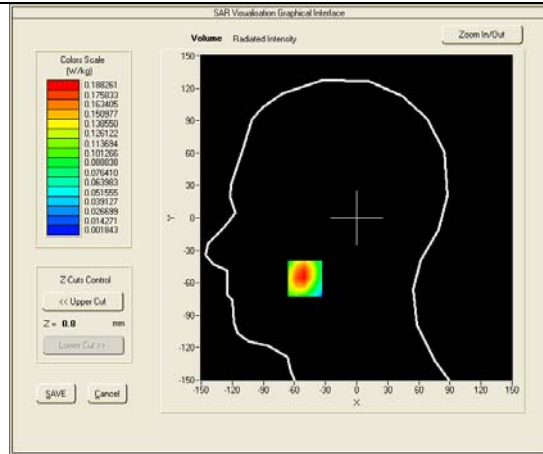
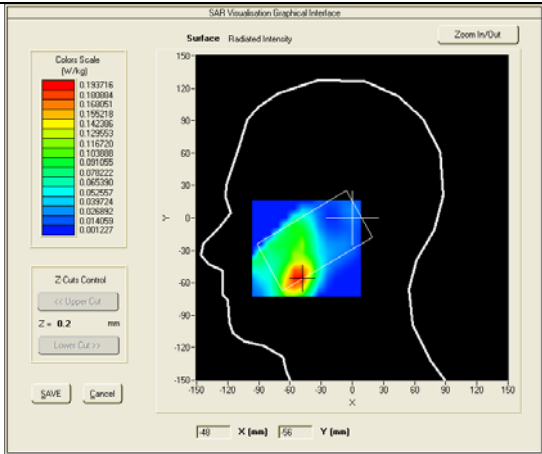


Test mode: GSM1900, Middle channel (Right Head Cheek)  
 Product Description: GSM/WCDMA MOBILE PHONE  
 Model: M4 SS1080  
 Test Date: May 26th, 2013

Medium(liquid type)	HSL_1900
Frequency (MHz)	1880.0000
Relative permittivity (real part)	41.115
Conductivity (S/m)	1.389
E-Field Probe	SN 18/11 EPG123
Crest factor	8.0
Conversion Factor	7.92
Sensor-Surface	4mm
Area Scan	dx=8mm dy=8mm
Zoom Scan	5x5x7,dx=8mm dy=8mm dz=5mm
Variation (%)	2.21000
SAR 10g (W/Kg)	0.109821
SAR 1g (W/Kg)	0.180124

**SURFACE SAR**

**VOLUME SAR**

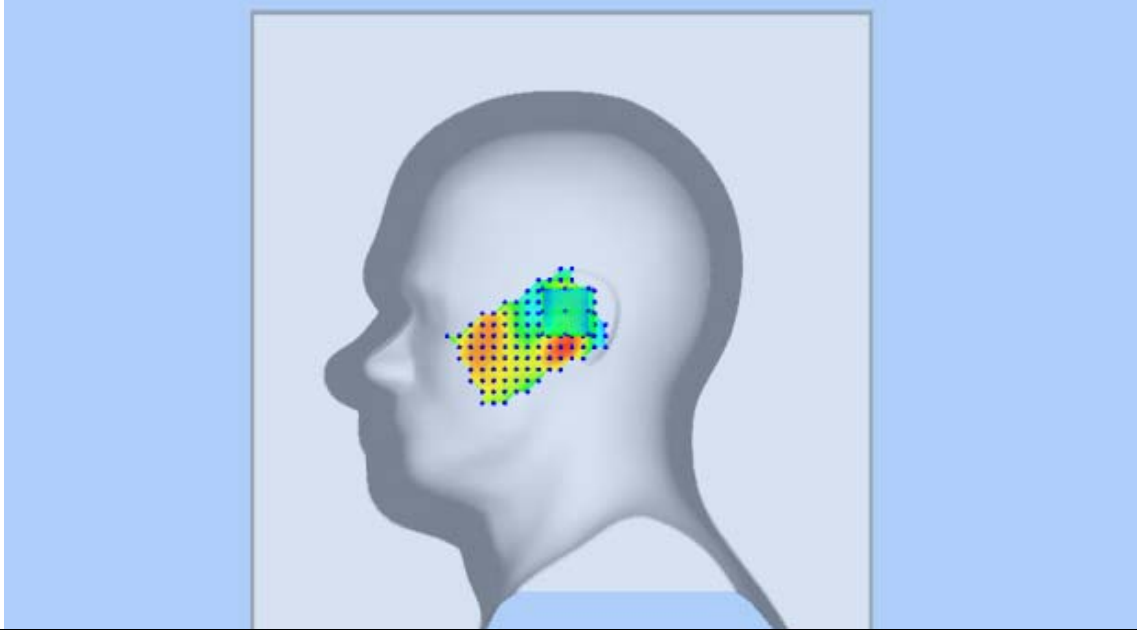
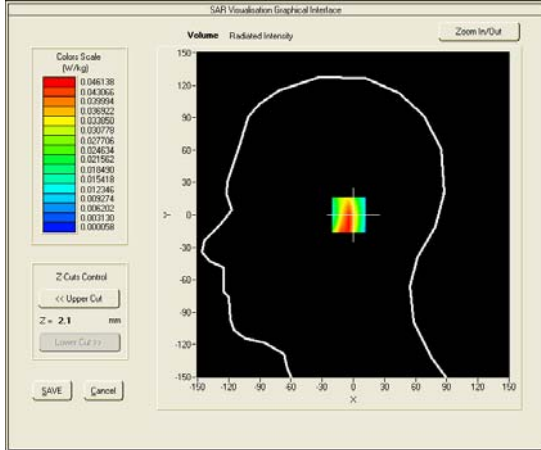
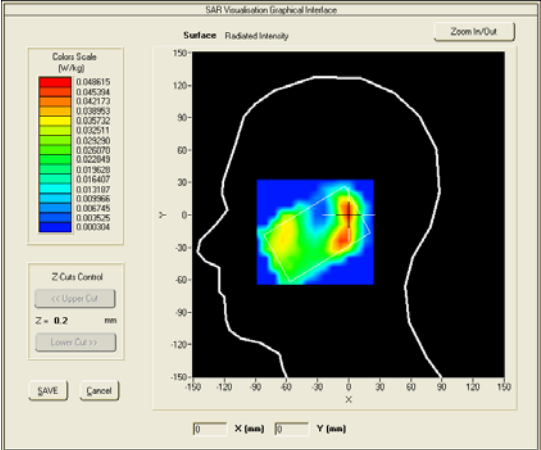


Test mode: GSM1900, Middle channel (Right Head Tilt)  
 Product Description: GSM/WCDMA MOBILE PHONE  
 Model: M4 SS1080  
 Test Date: May 26th, 2013

Medium(liquid type)	HSL_1900
Frequency (MHz)	1880.0000
Relative permittivity (real part)	41.115
Conductivity (S/m)	1.389
E-Field Probe	SN 18/11 EPG123
Crest factor	8.0
Conversion Factor	7.92
Sensor-Surface	4mm
Area Scan	dx=8mm dy=8mm
Zoom Scan	5x5x7,dx=8mm dy=8mm dz=5mm
Variation (%)	-1.16000
SAR 10g (W/Kg)	0.023142
SAR 1g (W/Kg)	0.043333

**SURFACE SAR**

**VOLUME SAR**

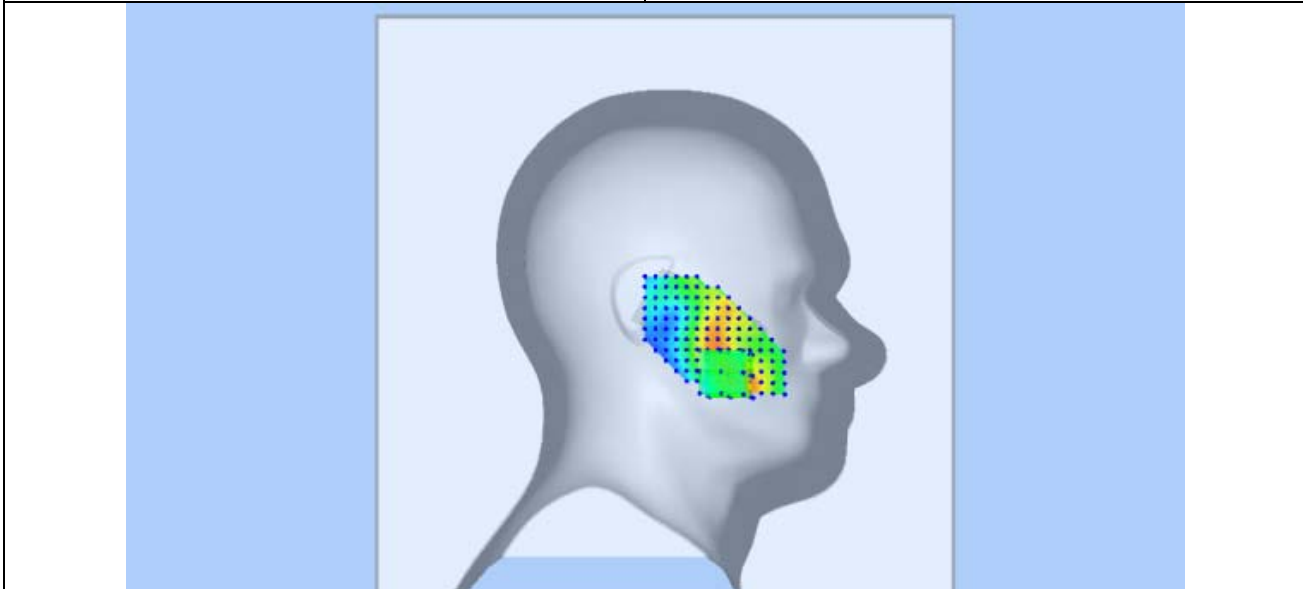
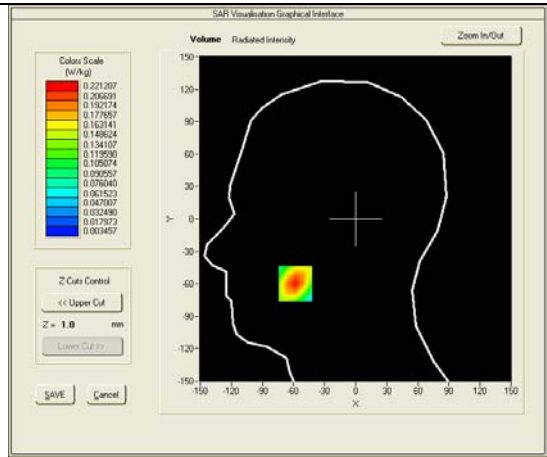
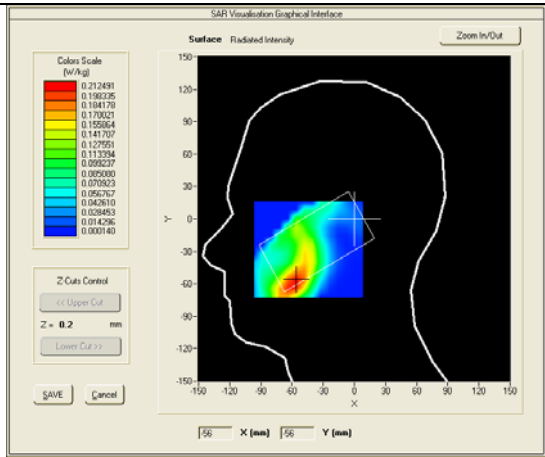


Test mode: GSM1900, Middle channel (Left Head Cheek)  
 Product Description: GSM/WCDMA MOBILE PHONE  
 Model: M4 SS1080  
 Test Date: May 26th, 2013

Medium(liquid type)	HSL_1900
Frequency (MHz)	1880.0000
Relative permittivity (real part)	41.115
Conductivity (S/m)	1.389
E-Field Probe	SN 18/11 EPG123
Crest factor	8.0
Conversion Factor	7.92
Sensor-Surface	4mm
Area Scan	dx=8mm dy=8mm
Zoom Scan	5x5x7, dx=8mm dy=8mm dz=5mm
Variation (%)	2.92000
SAR 10g (W/Kg)	0.119575
SAR 1g (W/Kg)	0.207580

**SURFACE SAR**

**VOLUME SAR**

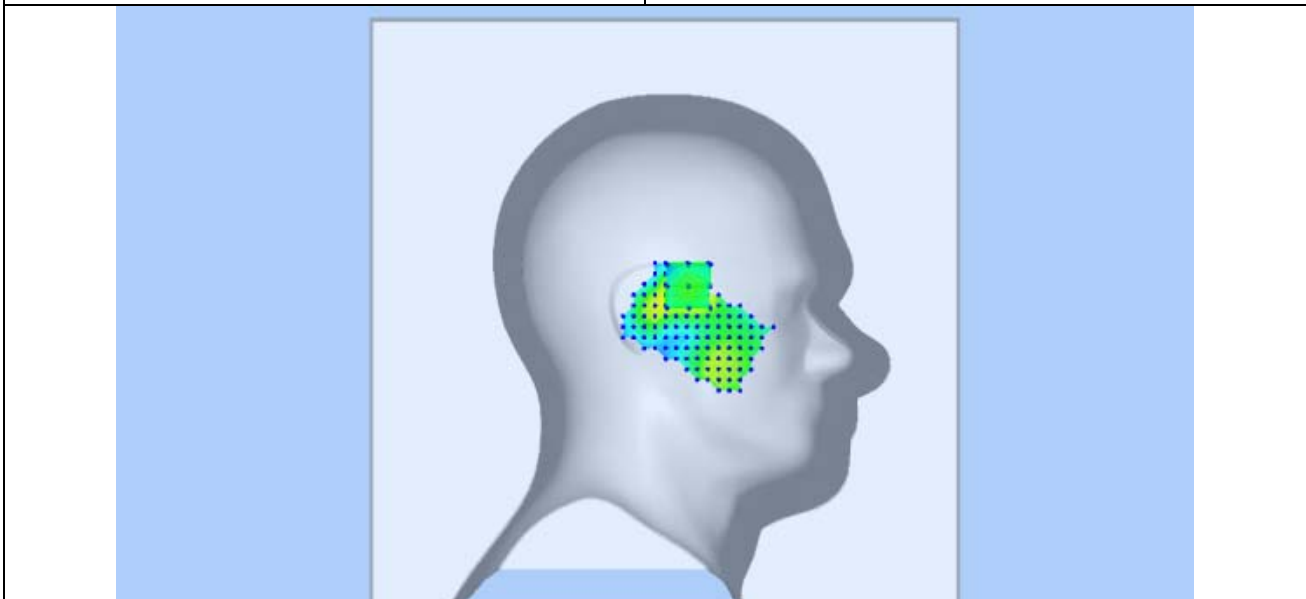
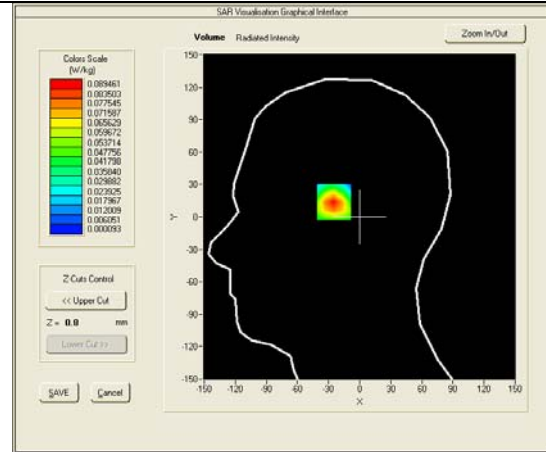
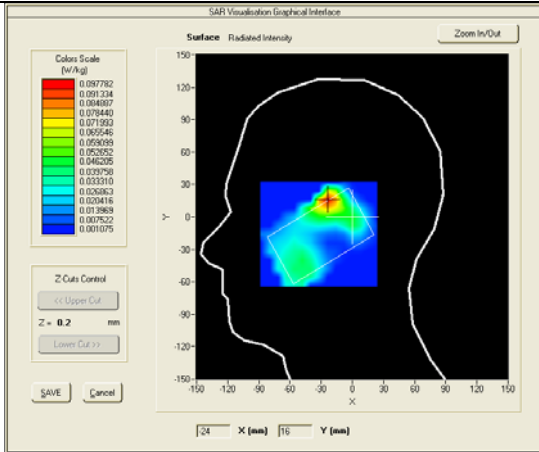


Test mode: GSM1900, Middle channel (Left Head Tilt)  
 Product Description: GSM/WCDMA MOBILE PHONE  
 Model: M4 SS1080  
 Test Date: May 26th, 2013

Medium(liquid type)	HSL_1900
Frequency (MHz)	1880.0000
Relative permittivity (real part)	41.115
Conductivity (S/m)	1.389
E-Field Probe	SN 18/11 EPG123
Crest factor	8.0
Conversion Factor	7.92
Sensor-Surface	4mm
Area Scan	dx=8mm dy=8mm
Zoom Scan	5x5x7,dx=8mm dy=8mm dz=5mm
Variation (%)	0.05000
SAR 10g (W/Kg)	0.048472
SAR 1g (W/Kg)	0.083421

**SURFACE SAR**

**VOLUME SAR**



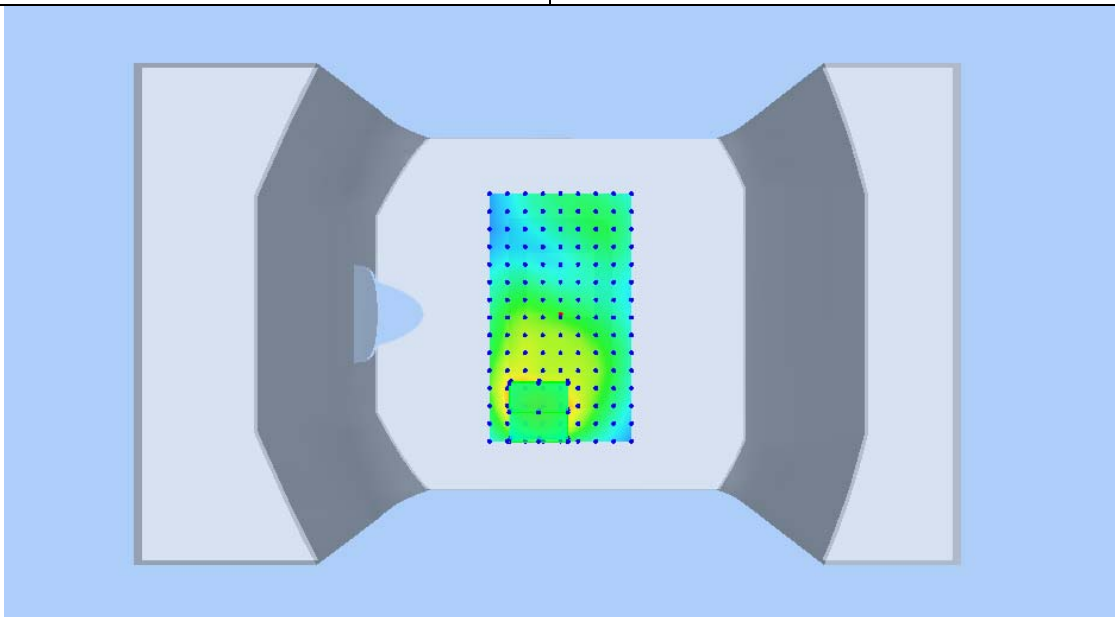
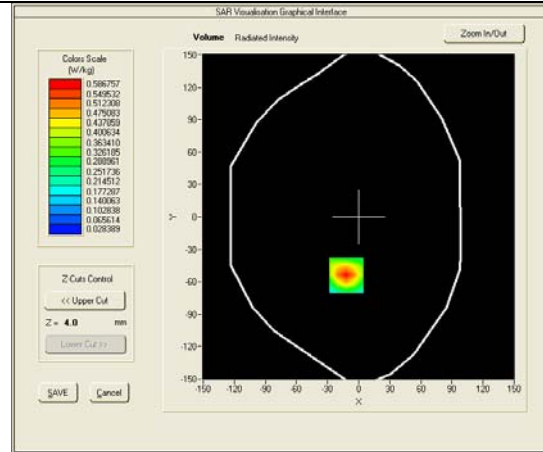
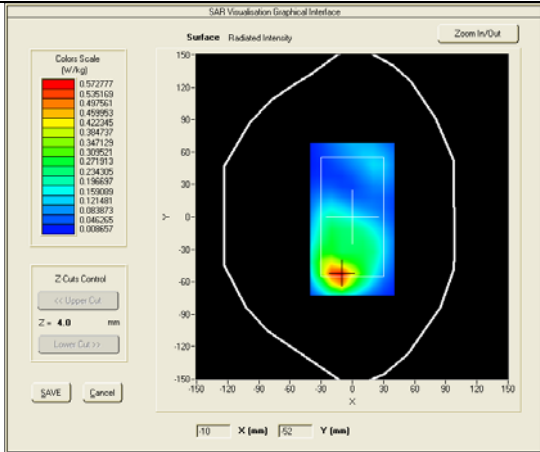


Test mode: GPRS1900, Middle channel (Body LCD-UP, edge front)  
 Product Description: GSM/WCDMA MOBILE PHONE  
 Model: M4 SS1080  
 Test Date: May 26th, 2013

Medium(liquid type)	HSL_1900
Frequency (MHz)	1880.0000
Relative permittivity (real part)	52.913
Conductivity (S/m)	1.47
E-Field Probe	SN 18/11 EPG123
Crest factor	2.0
Conversion Factor	8.18
Sensor-Surface	4mm
Area Scan	dx=8mm dy=8mm
Zoom Scan	5x5x7, dx=8mm dy=8mm dz=5mm
Variation (%)	3.04000
SAR 10g (W/Kg)	0.311569
SAR 1g (W/Kg)	0.556483

**SURFACE SAR**

**VOLUME SAR**

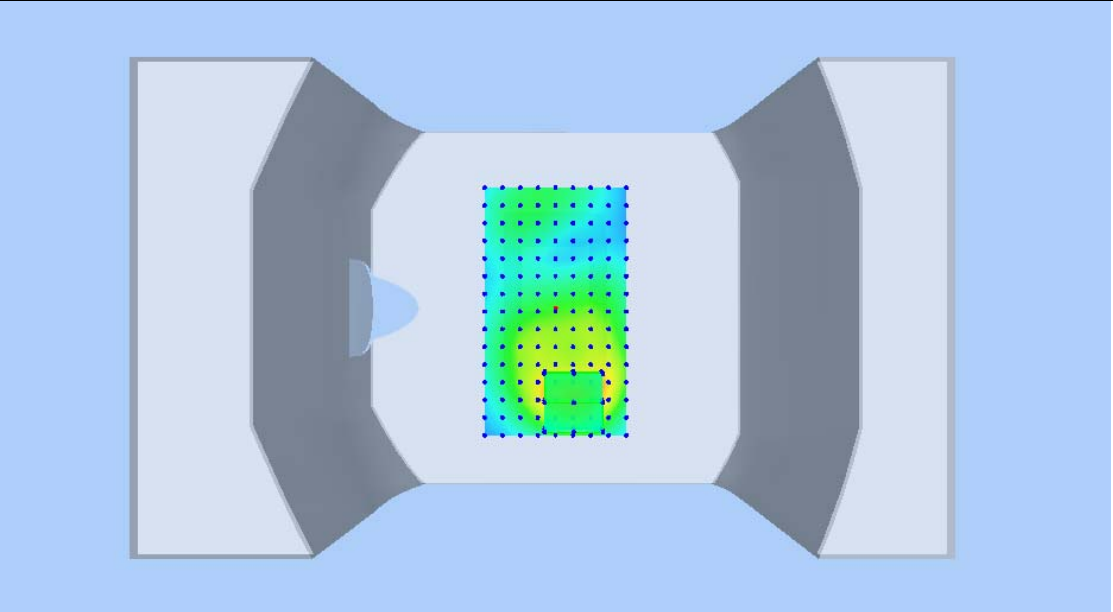
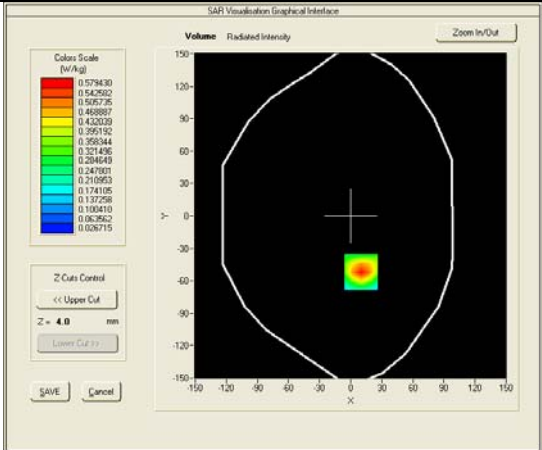
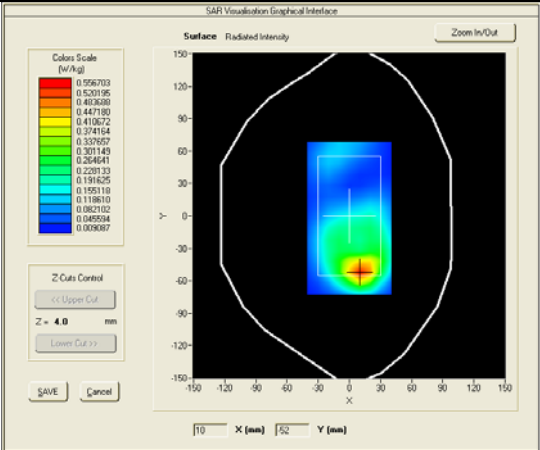


Test mode: GPRS1900, Middle channel (Body LCD-DOWN, edge back)  
 Product Description: GSM/WCDMA MOBILE PHONE  
 Model: M4 SS1080  
 Test Date: May 26th, 2013

Medium(liquid type)	MSL_1900
Frequency (MHz)	1880.00000
Relative permittivity (real part)	52.913
Conductivity (S/m)	1.47
E-Field Probe	SN 18/11 EPG123
Crest factor	2.0
Conversion Factor	8.18
Sensor-Surface	4mm
Area Scan	dx=8mm dy=8mm
Zoom Scan	5x5x7, dx=8mm dy=8mm dz=5mm
Variation (%)	-2.87000
SAR 10g (W/Kg)	0.303139
SAR 1g (W/Kg)	0.551139

**SURFACE SAR**

**VOLUME SAR**

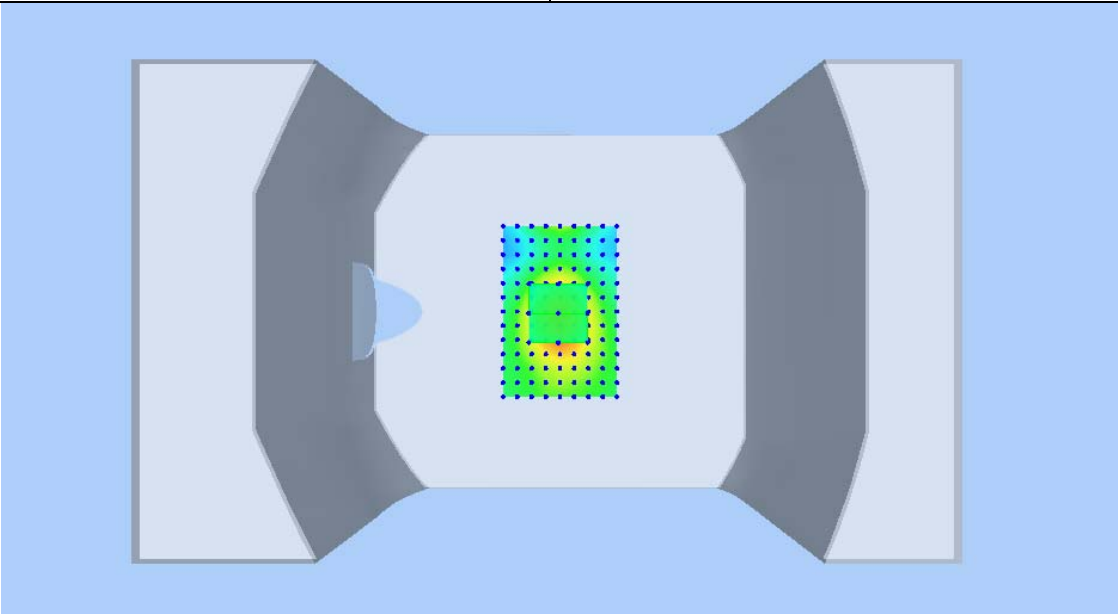
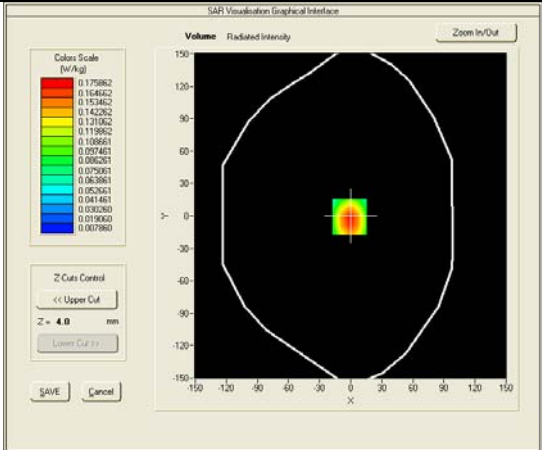
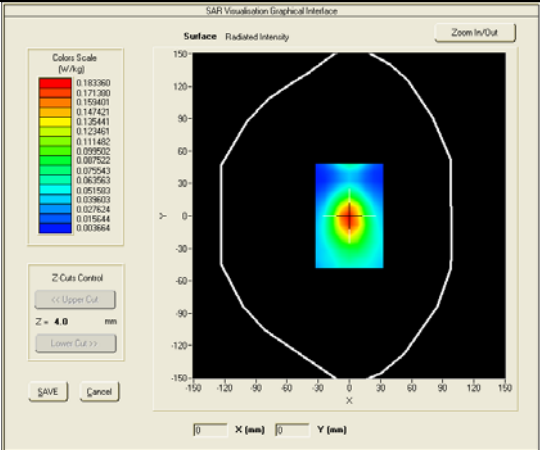


Test mode: GPRS1900, Middle channel (Body, edge right)  
 Product Description: GSM/WCDMA MOBILE PHONE  
 Model: M4 SS1080  
 Test Date: May 26th, 2013

Medium(liquid type)	MSL_1900
Frequency (MHz)	1880.00000
Relative permittivity (real part)	52.913
Conductivity (S/m)	1.47
E-Field Probe	SN 18/11 EPG123
Crest factor	2.0
Conversion Factor	8.18
Sensor-Surface	4mm
Area Scan	dx=8mm dy=8mm
Zoom Scan	5x5x7, dx=8mm dy=8mm dz=5mm
Variation (%)	0.64000
SAR 10g (W/Kg)	0.100194
SAR 1g (W/Kg)	0.170242

**SURFACE SAR**

**VOLUME SAR**

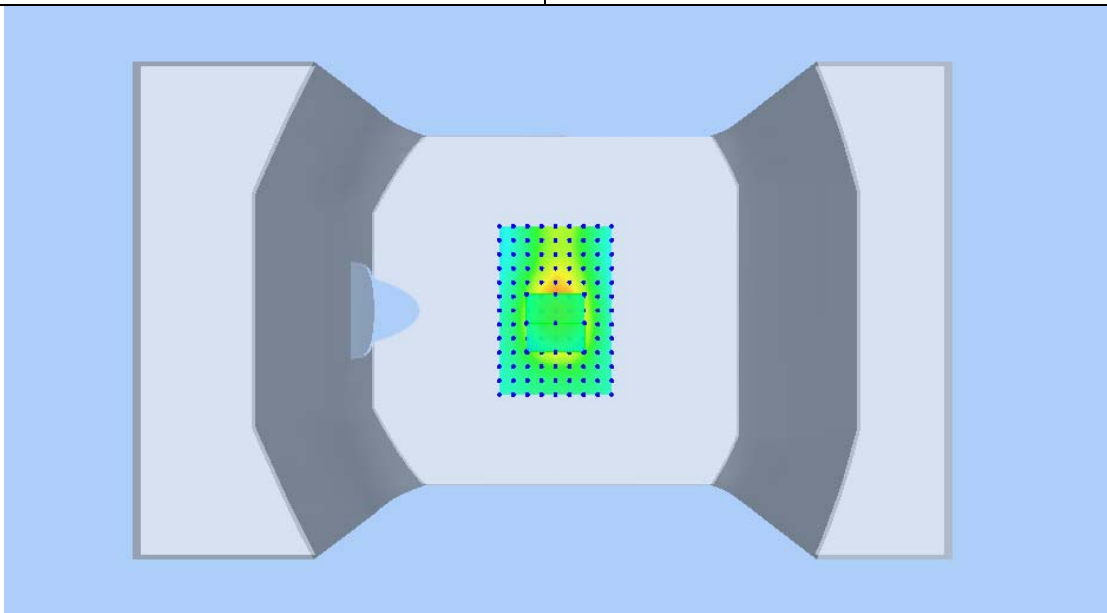
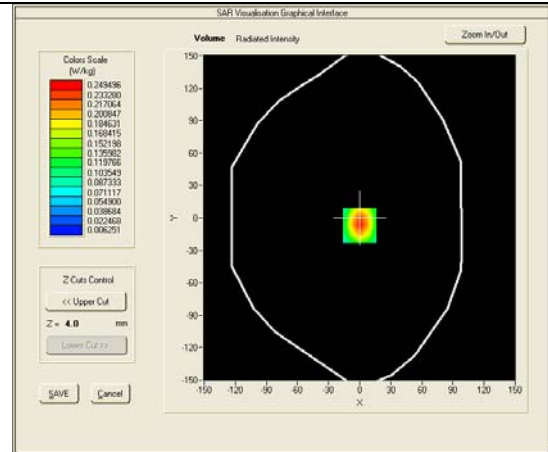
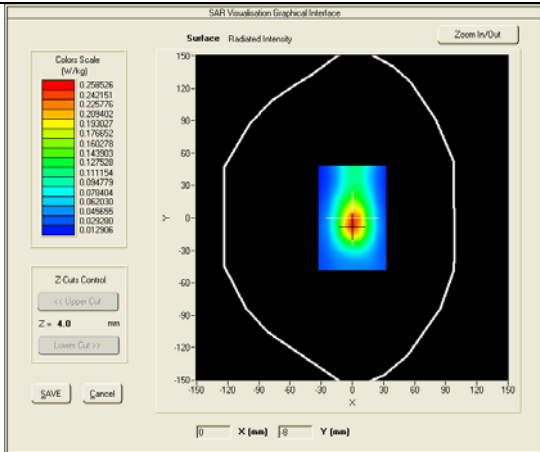


Test mode: GPRS1900, Middle channel (Body, edge left)  
 Product Description: GSM/WCDMA MOBILE PHONE  
 Model: M4 SS1080  
 Test Date: May 26th, 2013

Medium(liquid type)	MSL_1900
Frequency (MHz)	1880.00000
Relative permittivity (real part)	52.913
Conductivity (S/m)	1.47
E-Field Probe	SN 18/11 EPG123
Crest factor	2.0
Conversion Factor	8.18
Sensor-Surface	4mm
Area Scan	dx=8mm dy=8mm
Zoom Scan	5x5x7, dx=8mm dy=8mm dz=5mm
Variation (%)	-1.57000
SAR 10g (W/Kg)	0.133534
SAR 1g (W/Kg)	0.238544

**SURFACE SAR**

**VOLUME SAR**

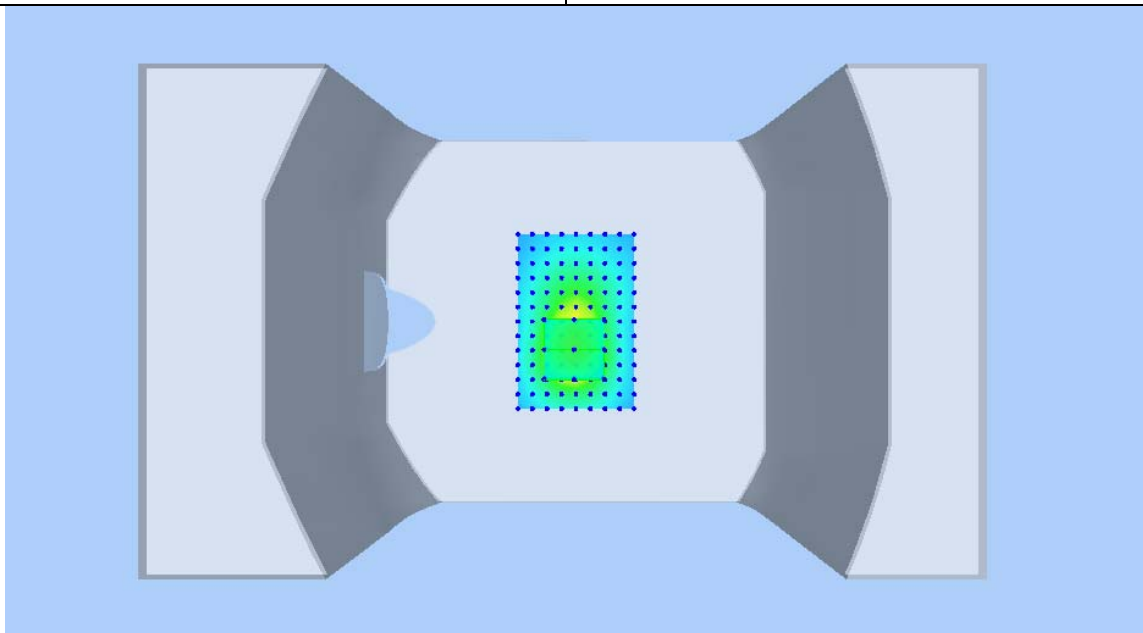
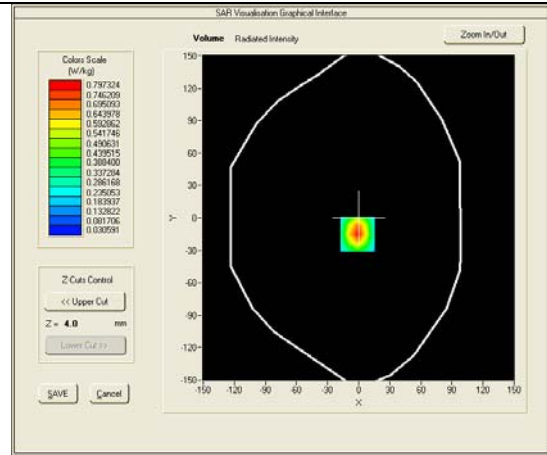
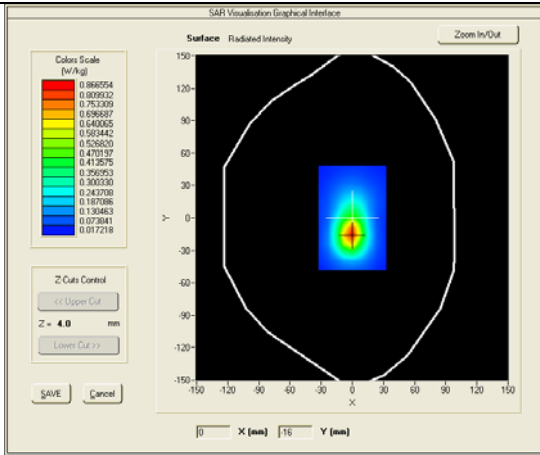


Test mode: GPRS1900, Middle channel (Body, edge bottom)  
 Product Description: GSM/WCDMA MOBILE PHONE  
 Model: M4 SS1080  
 Test Date: May 26th, 2013

Medium(liquid type)	MSL_1900
Frequency (MHz)	1880.00000
Relative permittivity (real part)	52.913
Conductivity (S/m)	1.47
E-Field Probe	SN 18/11 EPG123
Crest factor	2.0
Conversion Factor	8.18
Sensor-Surface	4mm
Area Scan	dx=8mm dy=8mm
Zoom Scan	5x5x7, dx=8mm dy=8mm dz=5mm
Variation (%)	1.42000
SAR 10g (W/Kg)	0.404865
SAR 1g (W/Kg)	0.749044

**SURFACE SAR**

**VOLUME SAR**

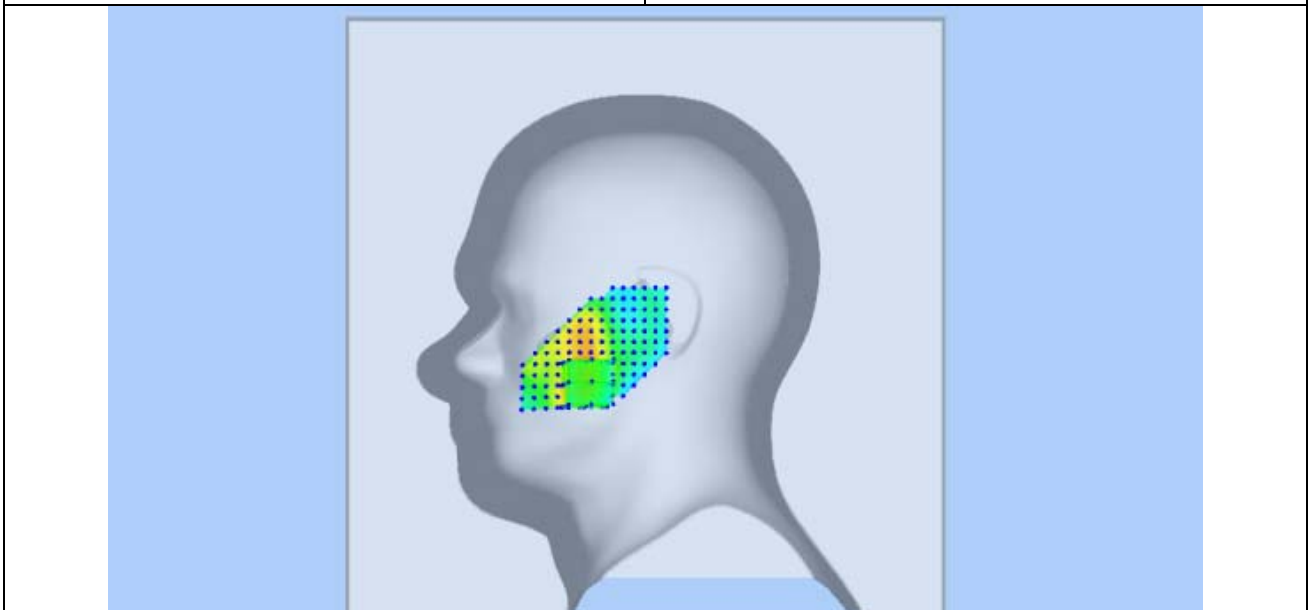
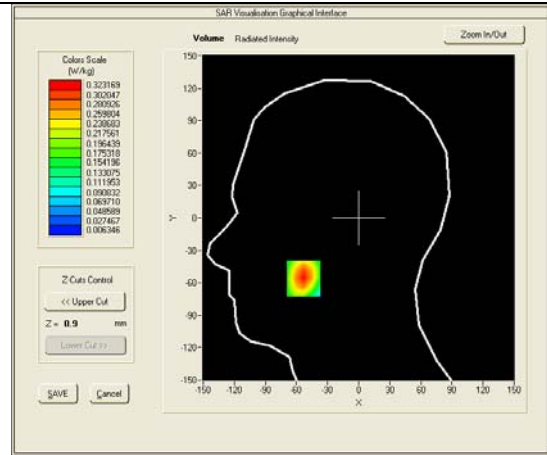
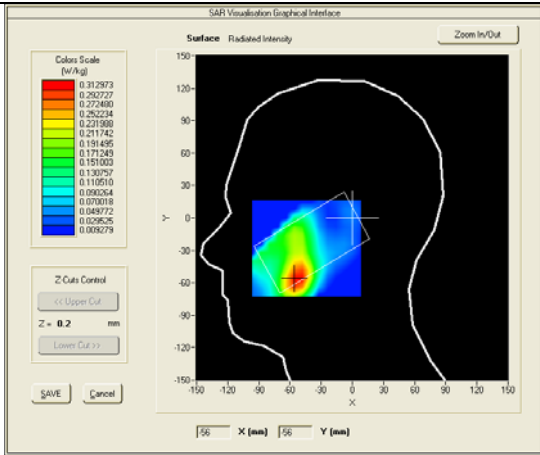


Test mode: WCDMA BAND II , middle channel (Right Head Cheek)  
 Product Description: GSM/WCDMA MOBILE PHONE  
 Model: M4 SS1080  
 Test Date: May 26th, 2013

Medium(liquid type)	HSL_1900
Frequency (MHz)	1880.0000
Relative permittivity (real part)	41.115
Conductivity (S/m)	1.389
E-Field Probe	SN 18/11 EPG123
Crest factor	1.0
Conversion Factor	9.09
Sensor-Surface	4mm
Area Scan	dx=8mm dy=8mm
Zoom Scan	5x5x7,dx=8mm dy=8mm dz=5mm
Variation (%)	-4.17000
SAR 10g (W/Kg)	0.187858
SAR 1g (W/Kg)	0.303486

**SURFACE SAR**

**VOLUME SAR**



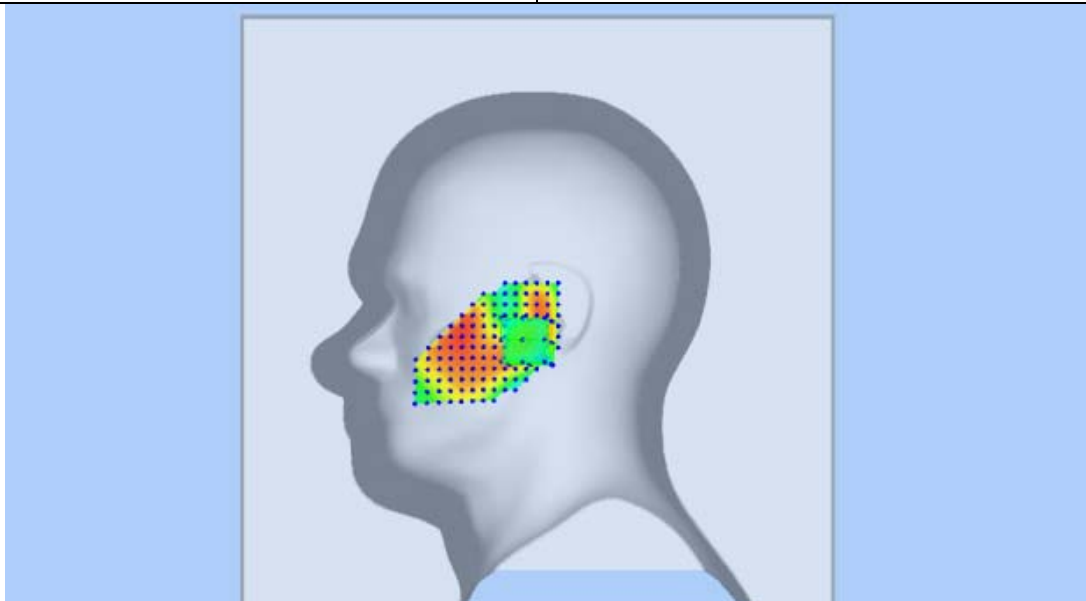
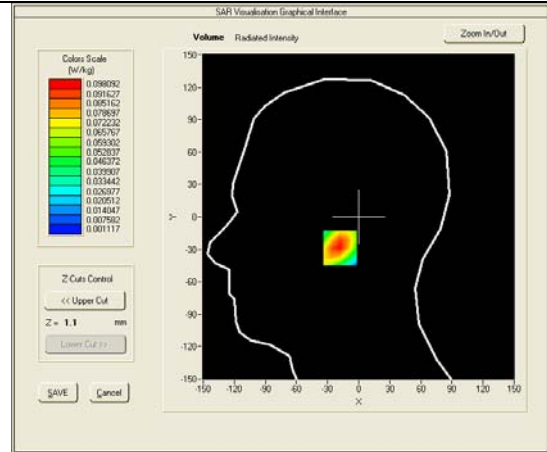
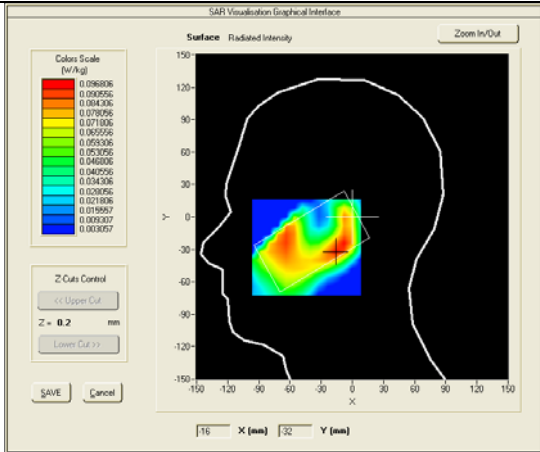


Test mode: WCDMA BAND II , middle channel (Right Head Tilt)  
 Product Description: GSM/WCDMA MOBILE PHONE  
 Model: M4 SS1080  
 Test Date: May 26th, 2013

Medium(liquid type)	HSL_1900
Frequency (MHz)	1880.0000
Relative permittivity (real part)	41.115
Conductivity (S/m)	1.389
E-Field Probe	SN 18/11 EPG123
Crest factor	1.0
Conversion Factor	9.09
Sensor-Surface	4mm
Area Scan	dx=8mm dy=8mm
Zoom Scan	5x5x7, dx=8mm dy=8mm dz=5mm
Variation (%)	0.81000
SAR 10g (W/Kg)	0.054973
SAR 1g (W/Kg)	0.093189

**SURFACE SAR**

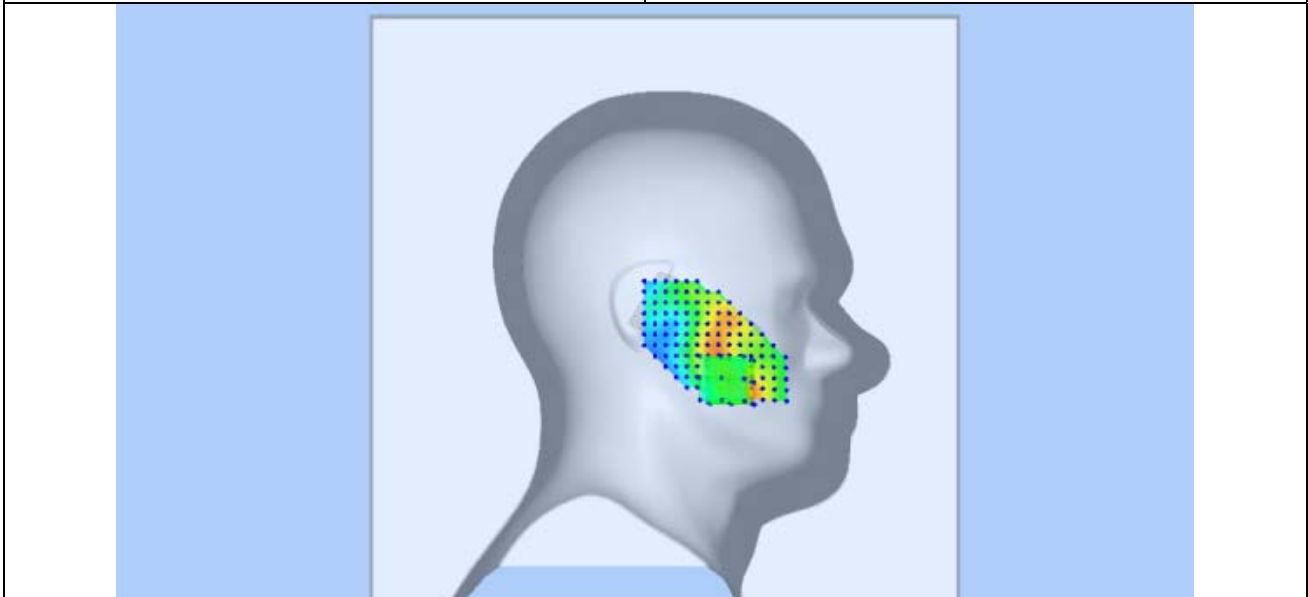
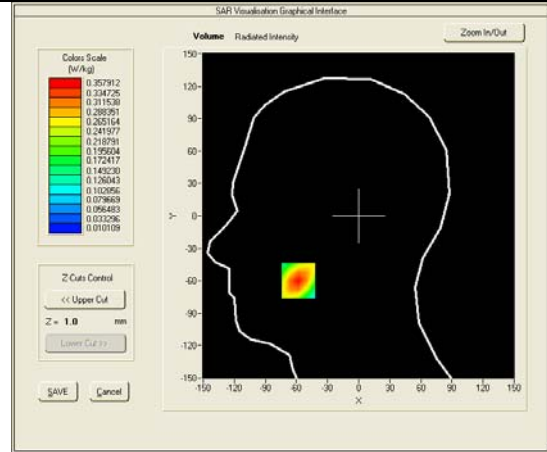
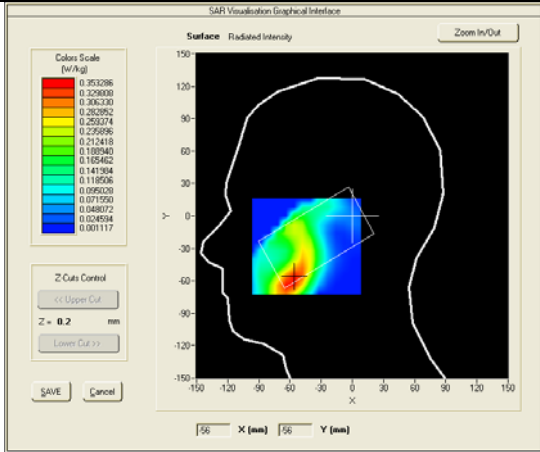
**VOLUME SAR**





Test mode: WCDMA BAND II , middle channel (left Head Cheek)  
 Product Description: GSM/WCDMA MOBILE PHONE  
 Model: M4 SS1080  
 Test Date: May 26th, 2013

Medium(liquid type)	HSL_1900
Frequency (MHz)	1880.0000
Relative permittivity (real part)	41.115
Conductivity (S/m)	1.389
E-Field Probe	SN 18/11 EPG123
Crest factor	1.0
Conversion Factor	9.09
Sensor-Surface	4mm
Area Scan	dx=8mm dy=8mm
Zoom Scan	5x5x7,dx=8mm dy=8mm dz=5mm
Variation (%)	-1.50000
SAR 10g (W/Kg)	0.200697
SAR 1g (W/Kg)	0.336369
<b>SURFACE SAR</b>	<b>VOLUME SAR</b>

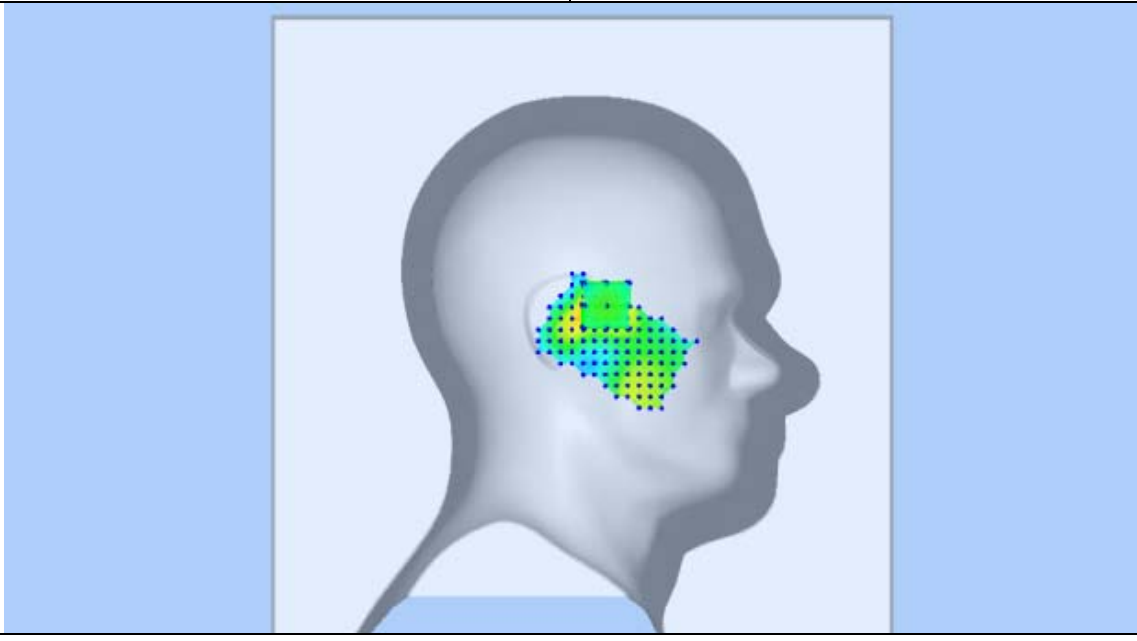
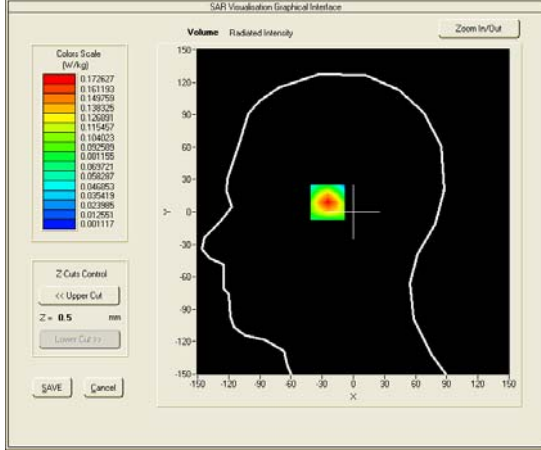
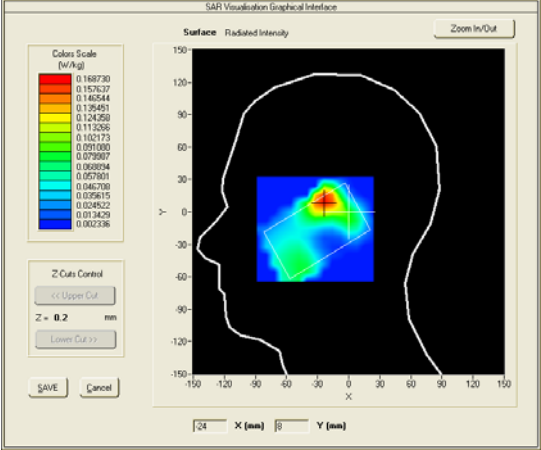


Test mode: WCDMA BAND II , middle channel (Left Head Tilt)  
 Product Description: GSM/WCDMA MOBILE PHONE  
 Model: M4 SS1080  
 Test Date: May 26th, 2013

Medium(liquid type)	HSL_1900
Frequency (MHz)	1880.0000
Relative permittivity (real part)	41.115
Conductivity (S/m)	1.389
E-Field Probe	SN 18/11 EPG123
Crest factor	1.0
Conversion Factor	9.09
Sensor-Surface	4mm
Area Scan	dx=8mm dy=8mm
Zoom Scan	5x5x7,dx=8mm dy=8mm dz=5mm
Variation (%)	-4.10000
SAR 10g (W/Kg)	0.092980
SAR 1g (W/Kg)	0.160120

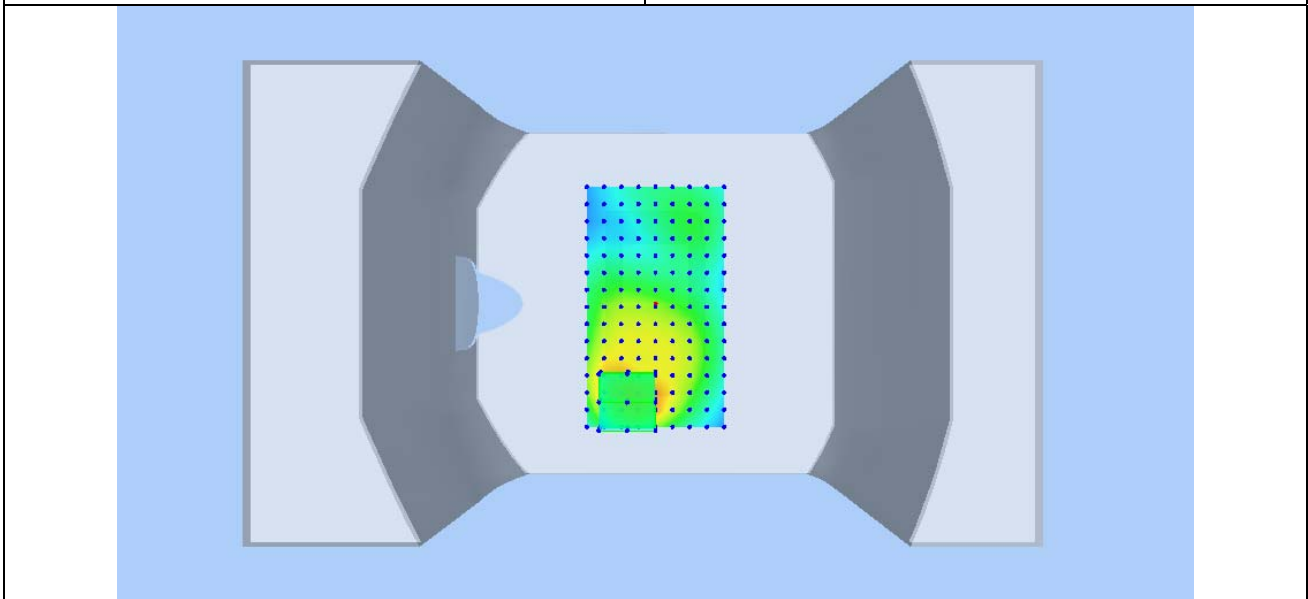
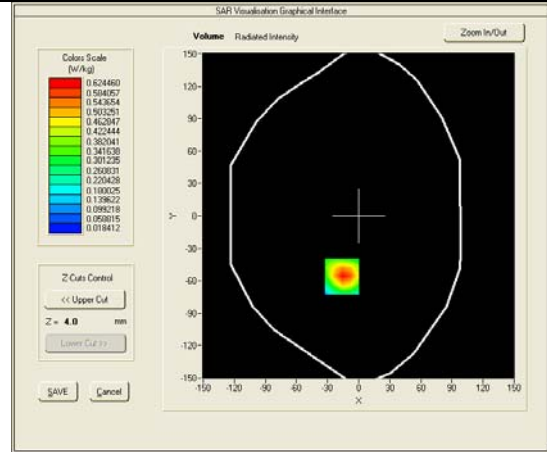
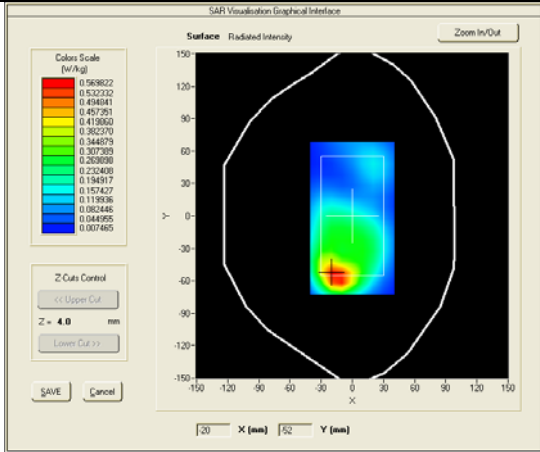
**SURFACE SAR**

**VOLUME SAR**



Test mode: WCDMA BAND II , middle channel (Body LCD-UP, edge front)  
 Product Description: GSM/WCDMA MOBILE PHONE  
 Model: M4 SS1080  
 Test Date: May 26th, 2013

Medium(liquid type)	MSL_1900
Frequency (MHz)	1880.0000
Relative permittivity (real part)	52.913
Conductivity (S/m)	1.511
E-Field Probe	SN 18/11 EPG123
Crest factor	1.0
Conversion Factor	9.32
Sensor-Surface	4mm
Area Scan	dx=8mm dy=8mm
Zoom Scan	5x5x7,dx=8mm dy=8mm dz=5mm
Variation (%)	-0.10000
SAR 10g (W/Kg)	0.351965
SAR 1g (W/Kg)	0.634206
<b>SURFACE SAR</b>	<b>VOLUME SAR</b>

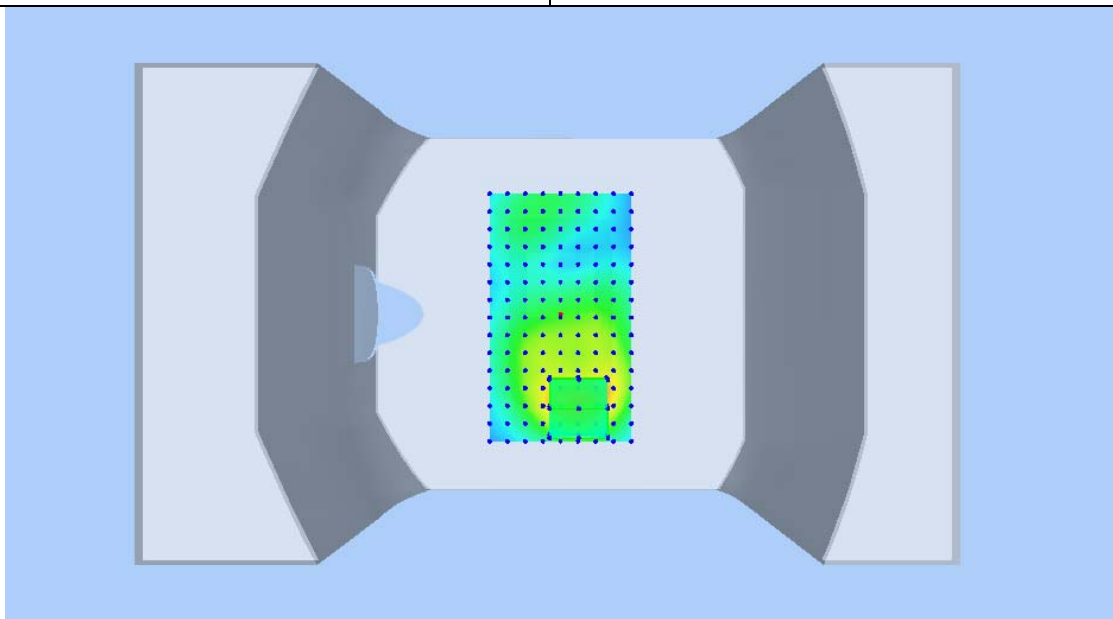
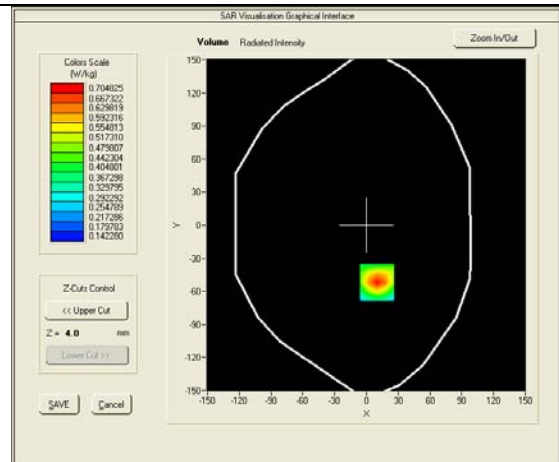
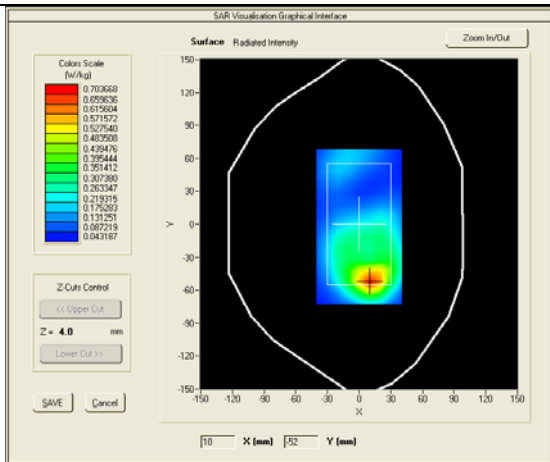


Test mode: WCDMA BAND II , middle channel (Body LCD-DOWN, edge back)  
 Product Description: GSM/WCDMA MOBILE PHONE  
 Model: M4 SS1080  
 Test Date: May 26th, 2013

Medium(liquid type)	MSL_1900
Frequency (MHz)	1880.0000
Relative permittivity (real part)	52.913
Conductivity (S/m)	1.511
E-Field Probe	SN 18/11 EPG123
Crest factor	1.0
Conversion Factor	9.32
Sensor-Surface	4mm
Area Scan	dx=8mm dy=8mm
Zoom Scan	5x5x7,dx=8mm dy=8mm dz=5mm
Variation (%)	-0.04000
SAR 10g (W/Kg)	0.503568
SAR 1g (W/Kg)	0.718748

**SURFACE SAR**

**VOLUME SAR**

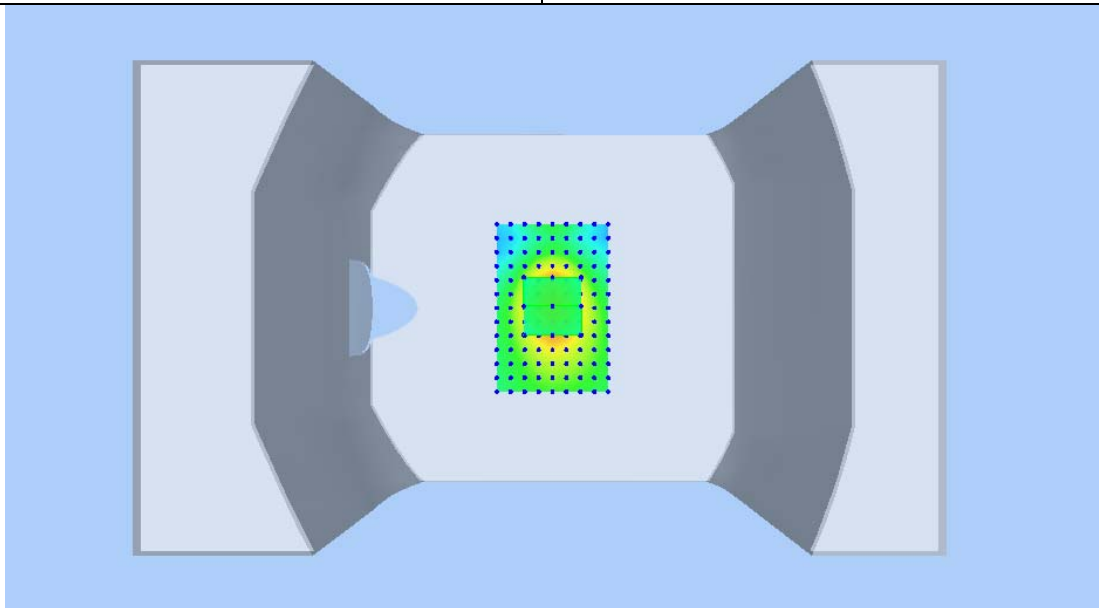
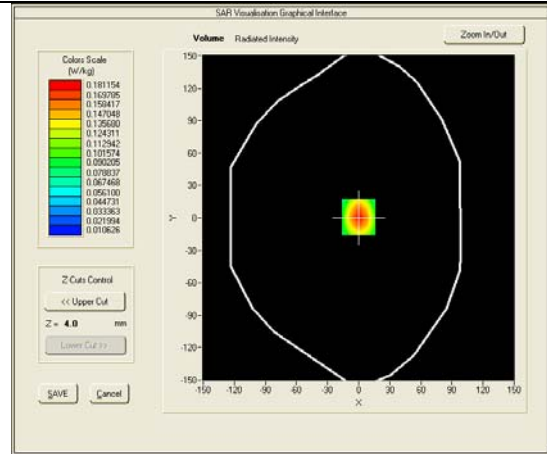
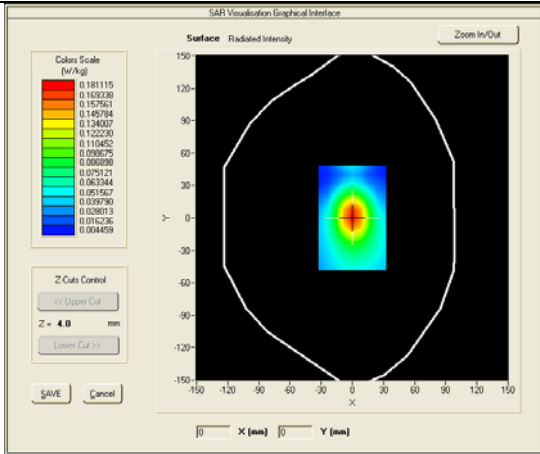


Test mode: WCDMA BAND II , middle channel (Body, edge right)  
 Product Description: GSM/WCDMA MOBILE PHONE  
 Model: M4 SS1080  
 Test Date: May 26th, 2013

Medium(liquid type)	MSL_1900
Frequency (MHz)	1880.0000
Relative permittivity (real part)	52.913
Conductivity (S/m)	1.511
E-Field Probe	SN 18/11 EPG123
Crest factor	1.0
Conversion Factor	9.32
Sensor-Surface	4mm
Area Scan	dx=8mm dy=8mm
Zoom Scan	5x5x7,dx=8mm dy=8mm dz=5mm
Variation (%)	0.26000
SAR 10g (W/Kg)	0.108354
SAR 1g (W/Kg)	0.184540

**SURFACE SAR**

**VOLUME SAR**

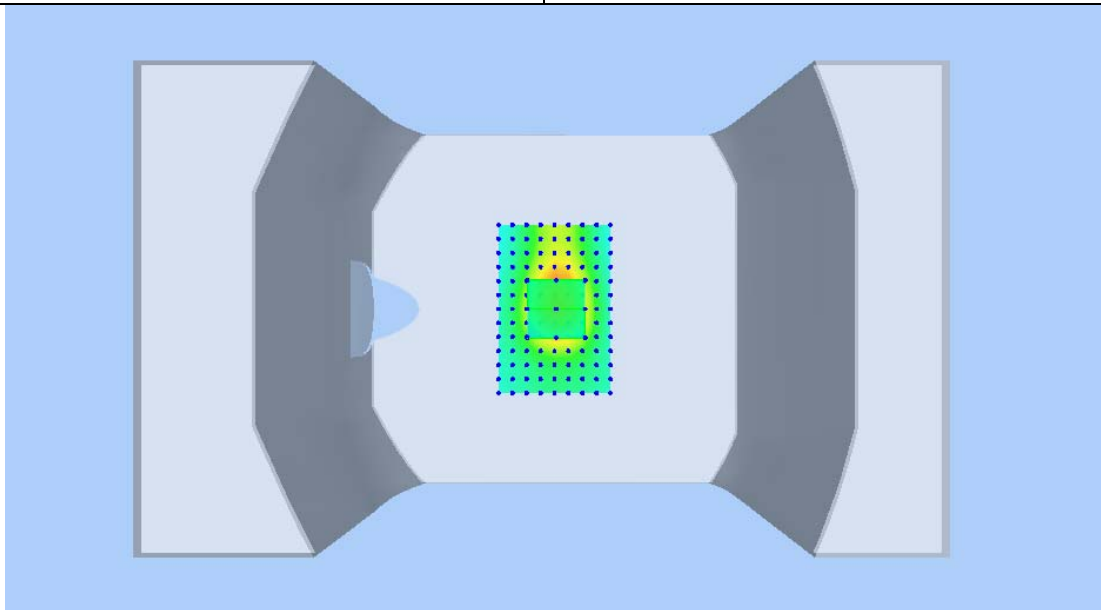
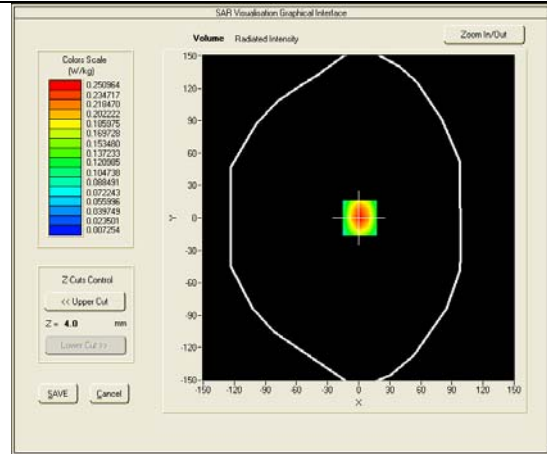
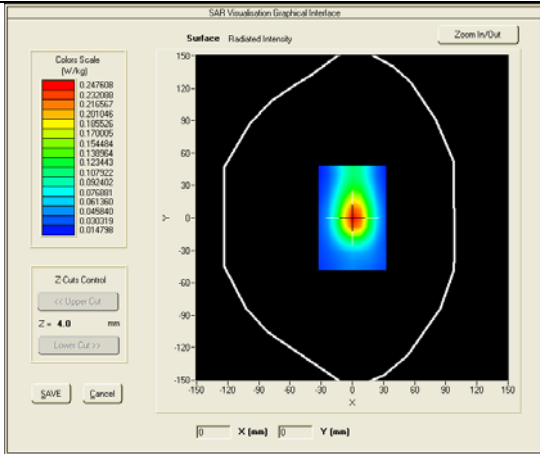


Test mode: WCDMA BAND II , middle channel (Body, edge left)  
 Product Description: GSM/WCDMA MOBILE PHONE  
 Model: M4 SS1080  
 Test Date: May 26th, 2013

Medium(liquid type)	MSL_1900
Frequency (MHz)	1880.0000
Relative permittivity (real part)	52.913
Conductivity (S/m)	1.511
E-Field Probe	SN 18/11 EPG123
Crest factor	1.0
Conversion Factor	9.32
Sensor-Surface	4mm
Area Scan	dx=8mm dy=8mm
Zoom Scan	5x5x7,dx=8mm dy=8mm dz=5mm
Variation (%)	0.25000
SAR 10g (W/Kg)	0.144816
SAR 1g (W/Kg)	0.254188

**SURFACE SAR**

**VOLUME SAR**



Test mode: WCDMA BAND II , middle channel (Body, edge bottom)

Product Description: GSM/WCDMA MOBILE PHONE

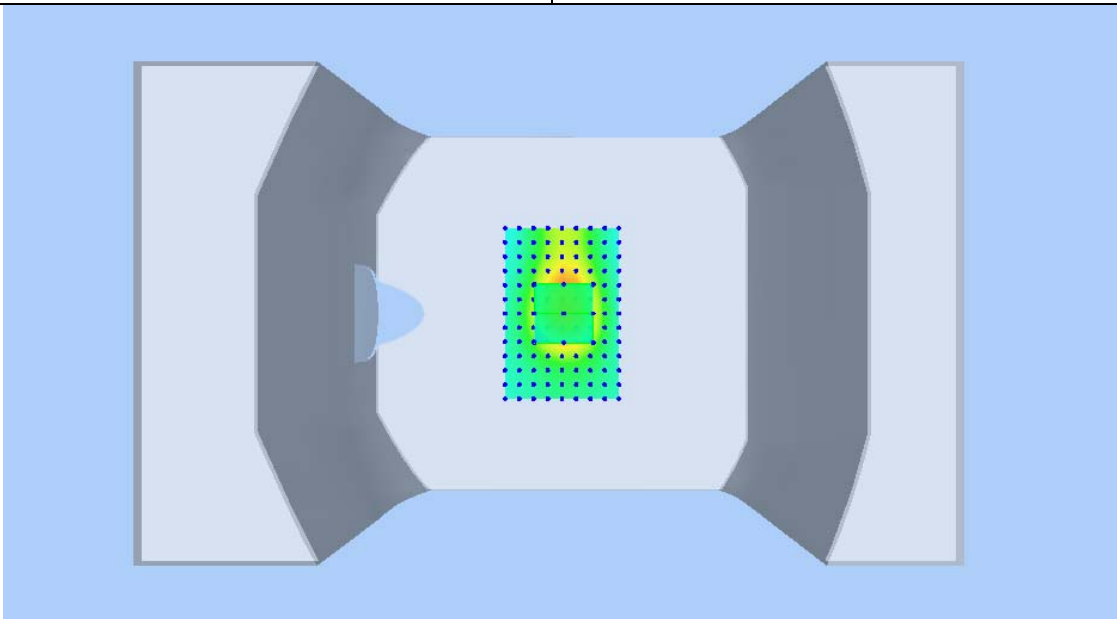
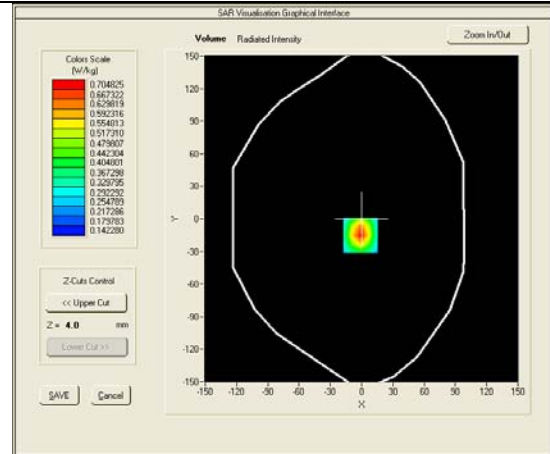
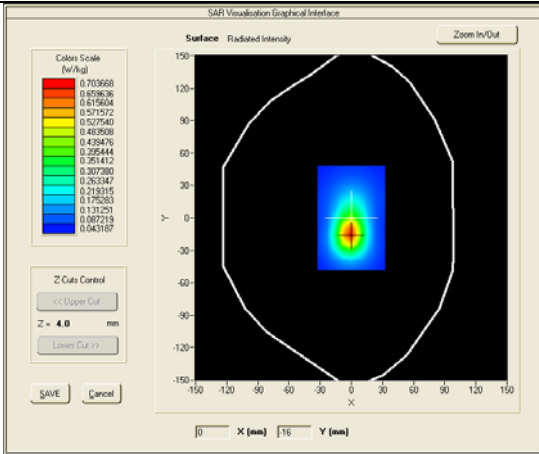
Model: M4 SS1080

Test Date: May 26th, 2013

Medium(liquid type)	MSL_1900
Frequency (MHz)	1880.0000
Relative permittivity (real part)	52.913
Conductivity (S/m)	1.511
E-Field Probe	SN 18/11 EPG123
Crest factor	1.0
Conversion Factor	9.32
Sensor-Surface	4mm
Area Scan	dx=8mm dy=8mm
Zoom Scan	5x5x7,dx=8mm dy=8mm dz=5mm
Variation (%)	0.41000
SAR 10g (W/Kg)	0.380623
SAR 1g (W/Kg)	0.704944

**SURFACE SAR**

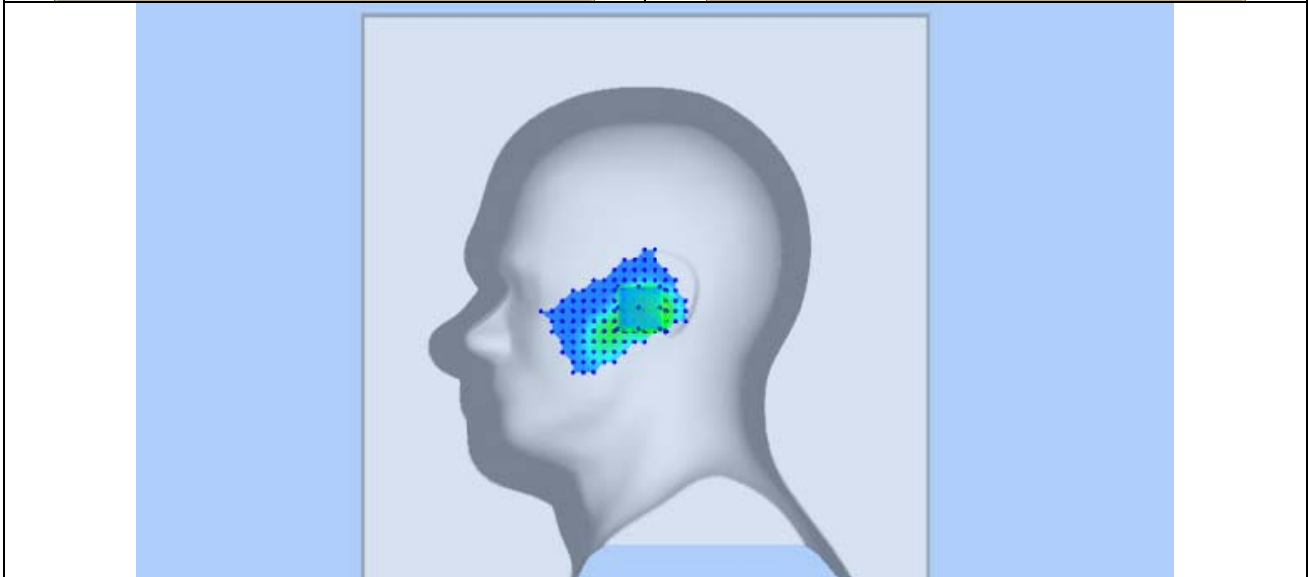
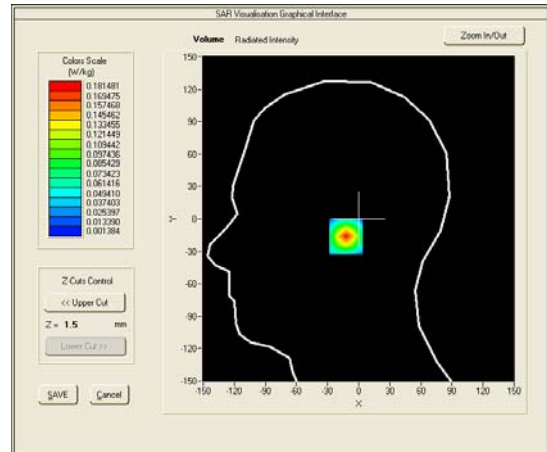
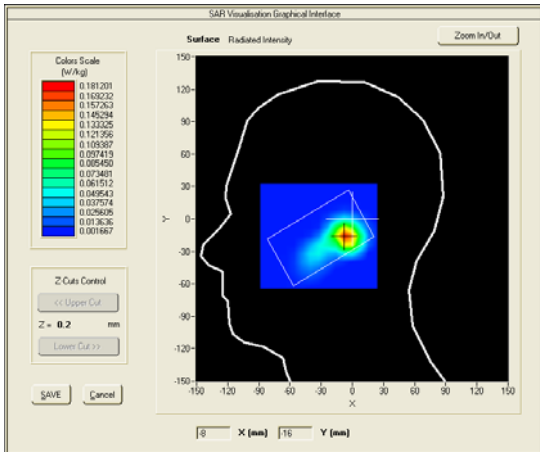
**VOLUME SAR**





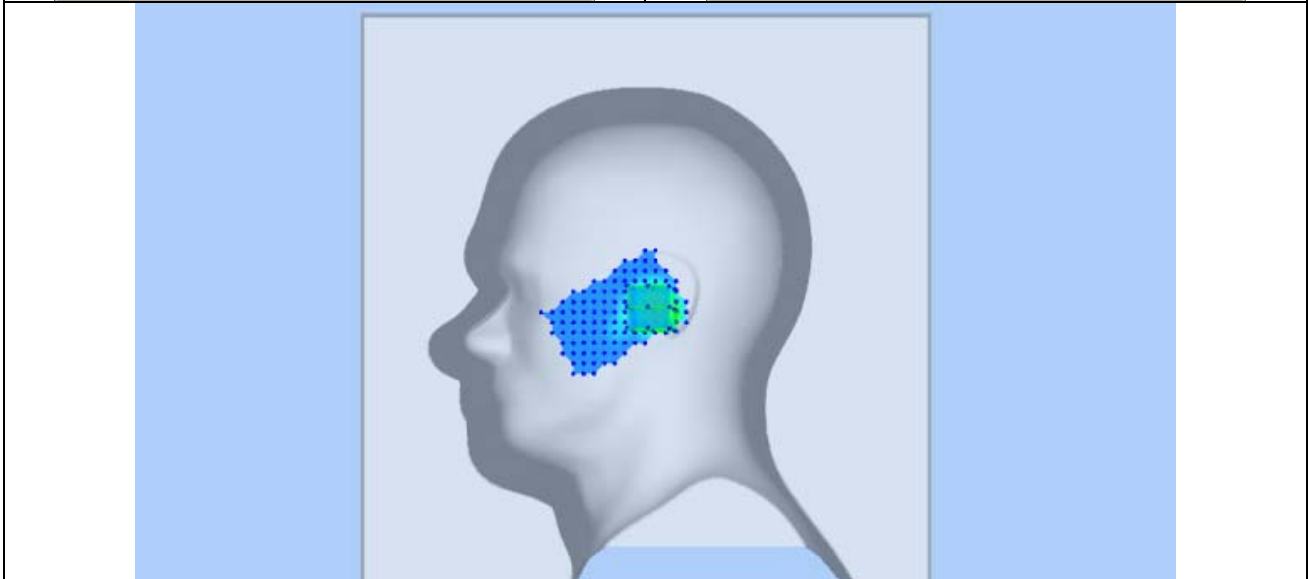
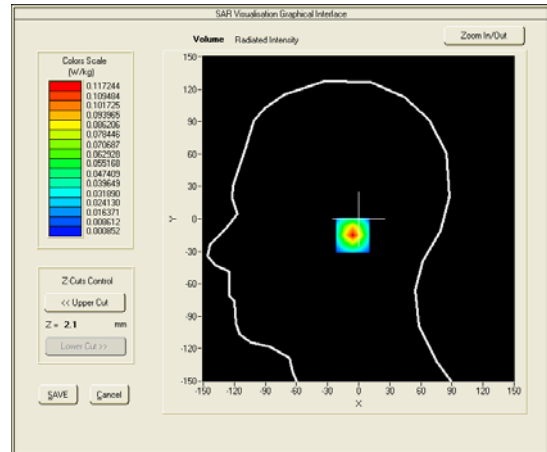
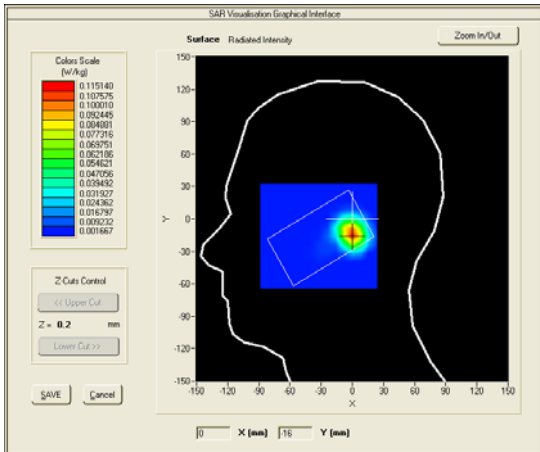
**Test mode: 802.11b, high channel (Right -Cheek)**  
**Product Description: GSM/WCDMA MOBILE PHONE**  
**Model: M4 SS1080**  
**Test Date: May 27th, 2013**

Medium(liquid type)	HSL_2450
Frequency (MHz)	2462.0000
Relative permittivity (real part)	39.511
Conductivity (S/m)	1.781
E-Field Probe	SN 18/11 EPG123
Crest factor	1.0
Conversion Factor	8.16
Sensor-Surface	4mm
Area Scan	dx=8mm dy=8mm
Zoom Scan	7x7x7,dx=5mm dy=5mm dz=5mm
Variation (%)	-2.47000
SAR 10g (W/Kg)	0.070022
SAR 1g (W/Kg)	0.164779
<b>SURFACE SAR</b>	<b>VOLUME SAR</b>



**Test mode: 802.11b, high channel (Right-tilt)**  
**Product Description: GSM/WCDMA MOBILE PHONE**  
**Model: M4 SS1080**  
**Test Date: May 27th, 2013**

Medium(liquid type)	HSL_2450
Frequency (MHz)	2462.0000
Relative permittivity (real part)	39.511
Conductivity (S/m)	1.781
E-Field Probe	SN 18/11 EPG123
Crest factor	1.0
Conversion Factor	8.16
Sensor-Surface	4mm
Area Scan	dx=8mm dy=8mm
Zoom Scan	7x7x7,dx=5mm dy=5mm dz=5mm
Variation (%)	-1.33000
SAR 10g (W/Kg)	0.044505
SAR 1g (W/Kg)	0.105582
<b>SURFACE SAR</b>	<b>VOLUME SAR</b>



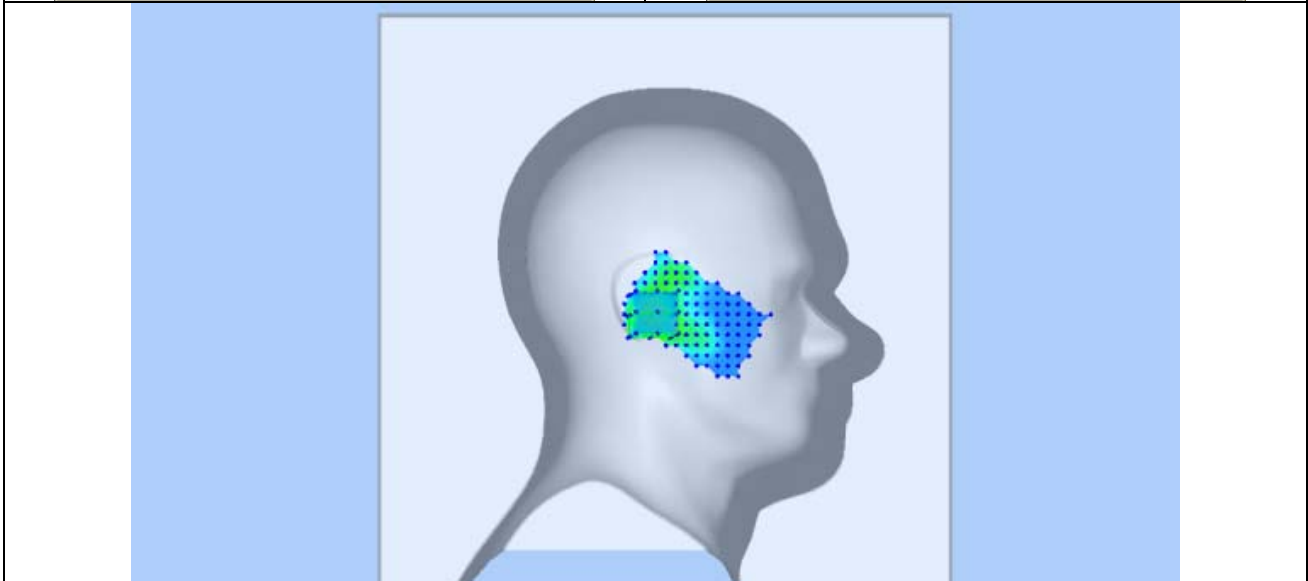
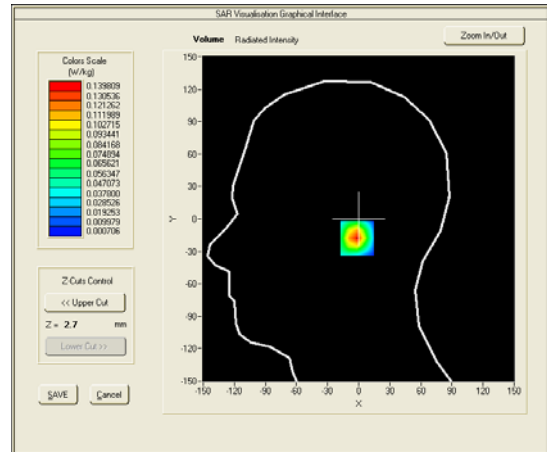
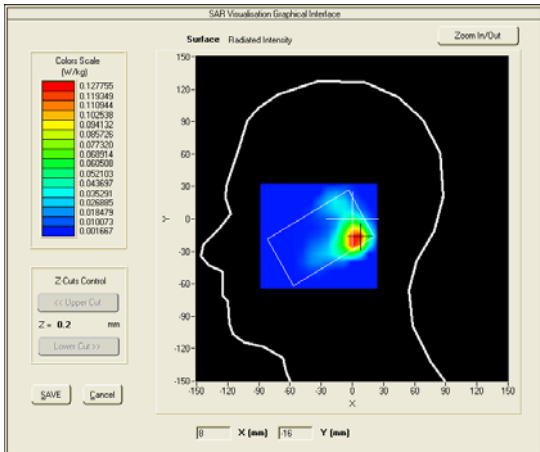
Test mode: 802.11b, high channel (Left Cheek)

Product Description: GSM/WCDMA MOBILE PHONE

Model: M4 SS1080

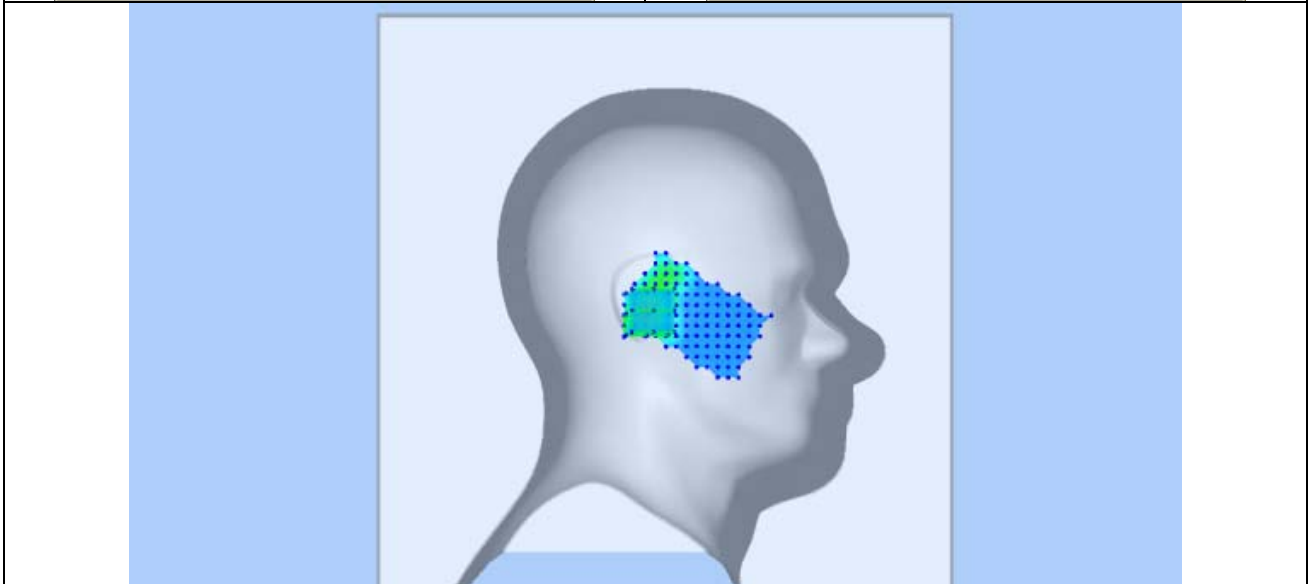
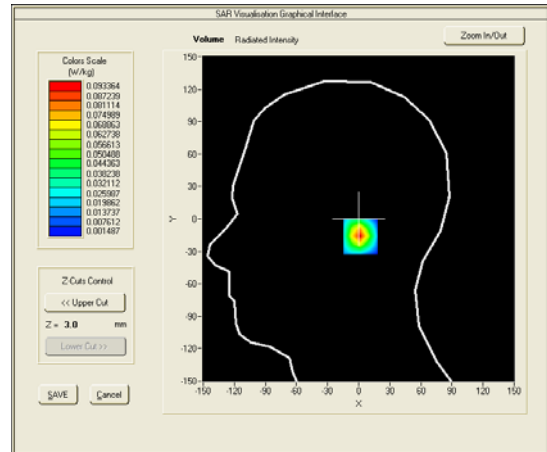
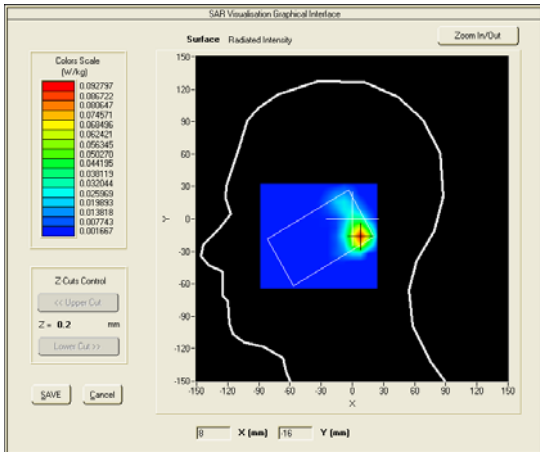
Test Date: May 27th, 2013

Medium(liquid type)	HSL_2450
Frequency (MHz)	2462.0000
Relative permittivity (real part)	39.511
Conductivity (S/m)	1.781
E-Field Probe	SN 18/11 EPG123
Crest factor	1.0
Conversion Factor	8.16
Sensor-Surface	4mm
Area Scan	dx=8mm dy=8mm
Zoom Scan	7x7x7,dx=5mm dy=5mm dz=5mm
Variation (%)	-1.14000
SAR 10g (W/Kg)	0.054901
SAR 1g (W/Kg)	0.128634
<b>SURFACE SAR</b>	<b>VOLUME SAR</b>



**Test mode: 802.11b, high channel (Left Tilt)**  
**Product Description: GSM/WCDMA MOBILE PHONE**  
**Model: M4 SS1080**  
**Test Date: May 27th, 2013**

Medium(liquid type)	MSL_2450
Frequency (MHz)	2462.0000
Relative permittivity (real part)	39.511
Conductivity (S/m)	1.781
E-Field Probe	SN 18/11 EPG123
Crest factor	1.0
Conversion Factor	8.16
Sensor-Surface	4mm
Area Scan	dx=8mm dy=8mm
Zoom Scan	7x7x7,dx=5mm dy=5mm dz=5mm
Variation (%)	3.26000
SAR 10g (W/Kg)	0.034691
SAR 1g (W/Kg)	0.084492
<b>SURFACE SAR</b>	<b>VOLUME SAR</b>



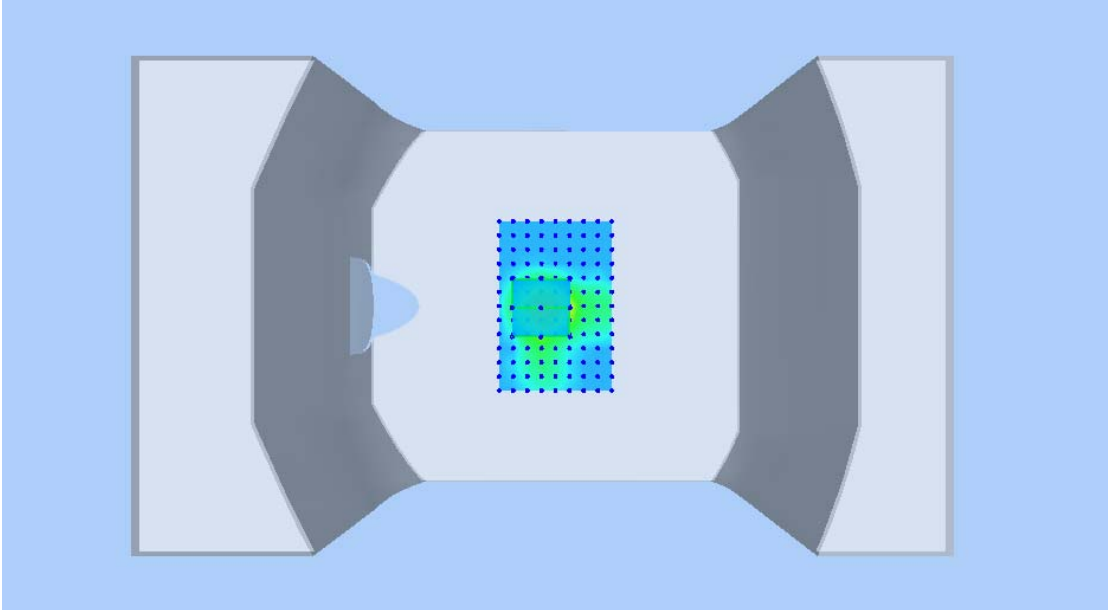
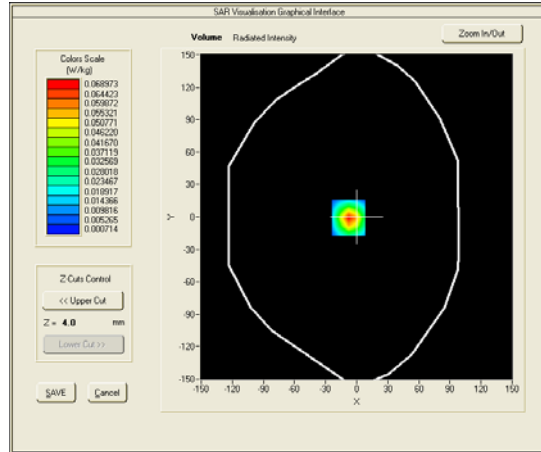
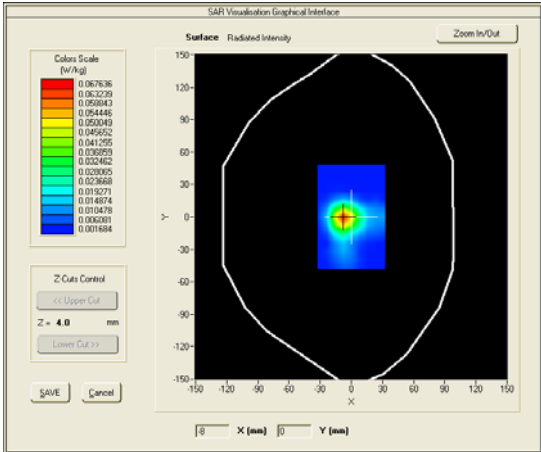
Test mode: 802.11b, high channel (Body LCD UP, edge front)

Product Description: GSM/WCDMA MOBILE PHONE

Model: M4 SS1080

Test Date: May 27th, 2013

Medium(liquid type)	MSL_2450
Frequency (MHz)	2462.0000
Relative permittivity (real part)	53.793
Conductivity (S/m)	1.923
E-Field Probe	SN 18/11 EPG123
Crest factor	1.0
Conversion Factor	8.16
Sensor-Surface	4mm
Area Scan	dx=8mm dy=8mm
Zoom Scan	7x7x7,dx=5mm dy=5mm dz=5mm
Variation (%)	-0.60000
SAR 10g (W/Kg)	0.027212
SAR 1g (W/Kg)	0.065695
<b>SURFACE SAR</b>	<b>VOLUME SAR</b>



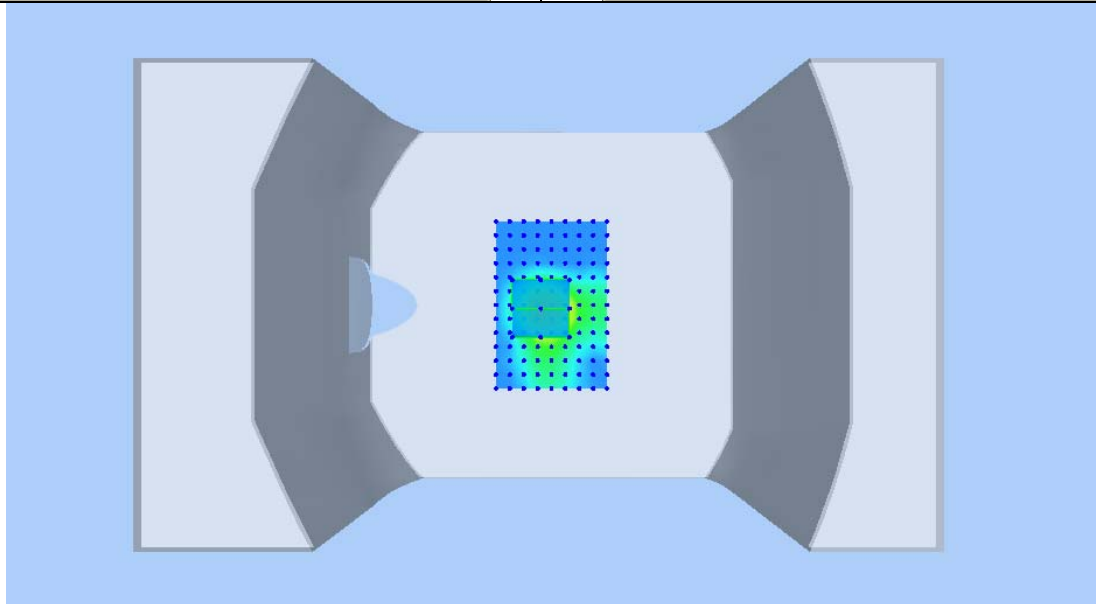
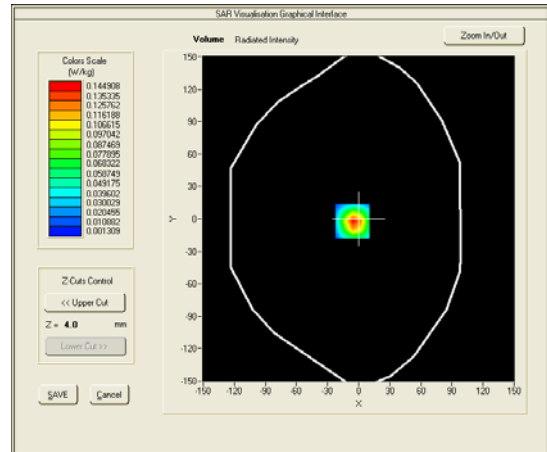
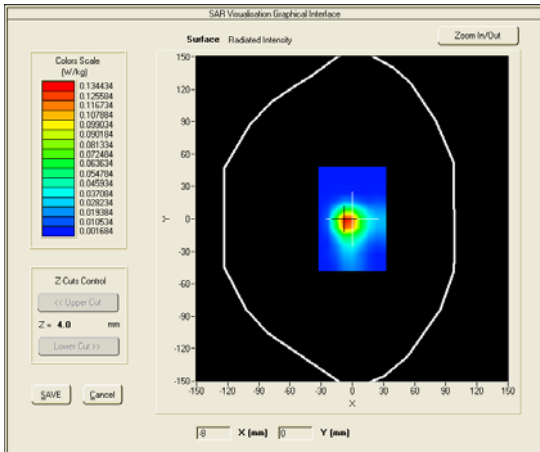
Test mode: 802.11b, high channel (Body LCD Down, edge back)

Product Description: GSM/WCDMA MOBILE PHONE

Model: M4 SS1080

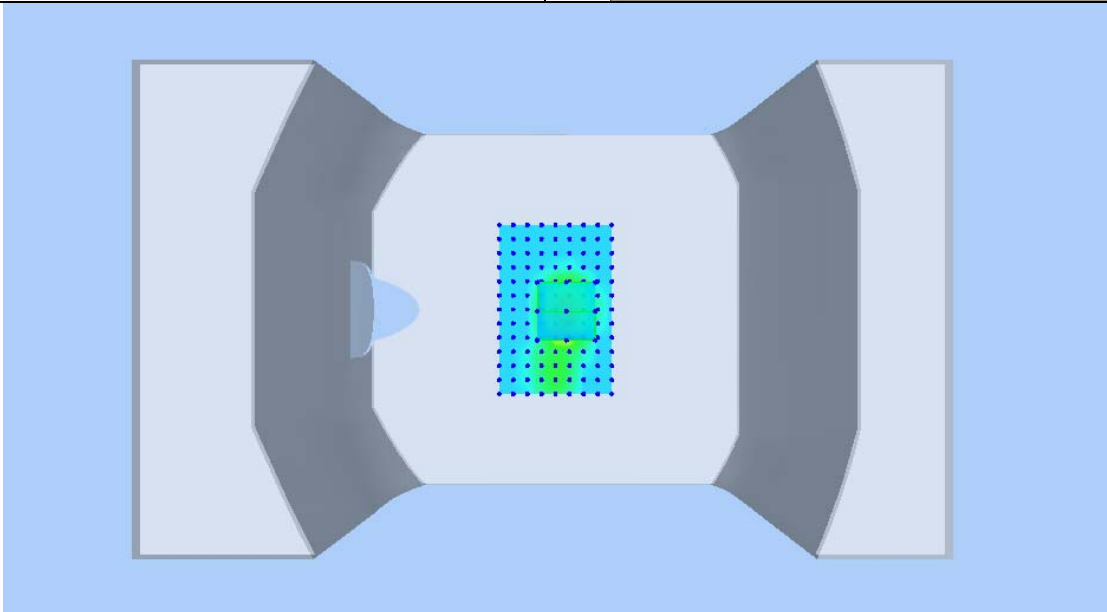
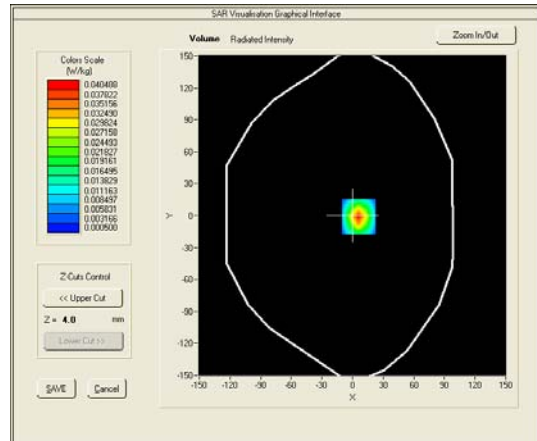
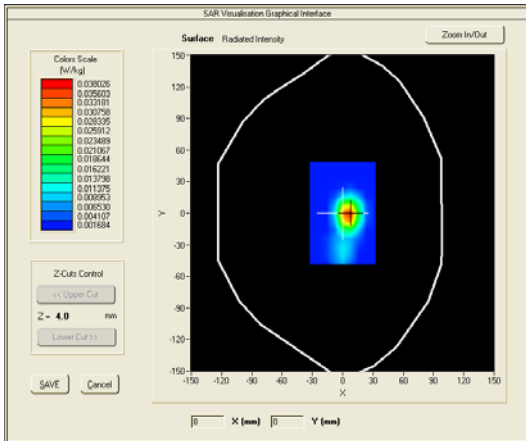
Test Date: May 27th, 2013

Medium(liquid type)	MSL_2450
Frequency (MHz)	2462.0000
Relative permittivity (real part)	53.793
Conductivity (S/m)	1.923
E-Field Probe	SN 18/11 EPG123
Crest factor	1.0
Conversion Factor	8.16
Sensor-Surface	4mm
Area Scan	dx=8mm dy=8mm
Zoom Scan	7x7x7,dx=5mm dy=5mm dz=5mm
Variation (%)	-0.33000
SAR 10g (W/Kg)	0.057296
SAR 1g (W/Kg)	0.138622
<b>SURFACE SAR</b>	<b>VOLUME SAR</b>



**Test mode: 802.11b, high channel (Body, edge right)**  
**Product Description: GSM/WCDMA MOBILE PHONE**  
**Model: M4 SS1080**  
**Test Date: May 27th, 2013**

Medium(liquid type)	MSL_2450
Frequency (MHz)	2462.0000
Relative permittivity (real part)	53.793
Conductivity (S/m)	1.923
E-Field Probe	SN 18/11 EPG123
Crest factor	1.0
Conversion Factor	8.16
Sensor-Surface	4mm
Area Scan	dx=8mm dy=8mm
Zoom Scan	7x7x7,dx=5mm dy=5mm dz=5mm
Variation (%)	0.25000
SAR 10g (W/Kg)	0.057715
SAR 1g (W/Kg)	0.102573
<b>SURFACE SAR</b>	<b>VOLUME SAR</b>





**Test mode: 802.11b, high channel (Body, edge top)**  
**Product Description: GSM/WCDMA MOBILE PHONE**  
**Model: M4 SS1080**  
**Test Date: May 27th, 2013**

Medium(liquid type)	MSL_2450
Frequency (MHz)	2462.0000
Relative permittivity (real part)	53.793
Conductivity (S/m)	1.923
E-Field Probe	SN 18/11 EPG123
Crest factor	1.0
Conversion Factor	8.16
Sensor-Surface	4mm
Area Scan	dx=8mm dy=8mm
Zoom Scan	7x7x7,dx=5mm dy=5mm dz=5mm
Variation (%)	-3.33000
SAR 10g (W/Kg)	0.040623
SAR 1g (W/Kg)	0.072325
<b>SURFACE SAR</b>	<b>VOLUME SAR</b>

