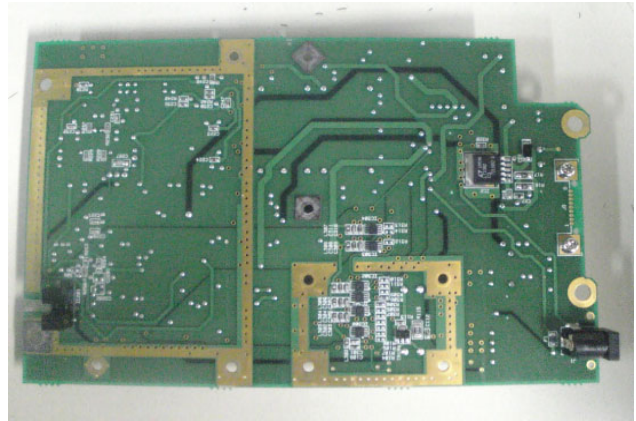
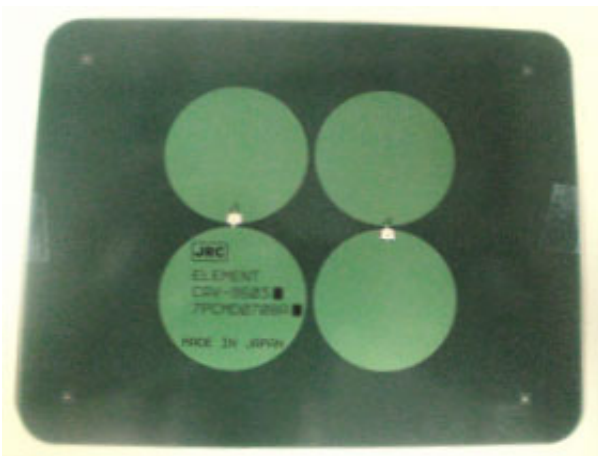


TRANSMITTER RECEIVER CIRCUIT - FRONT



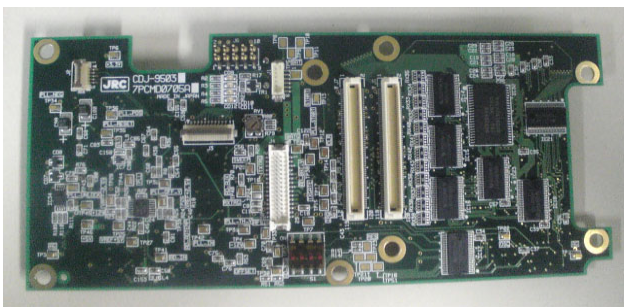
TRANSMITTER RECEIVER CIRCUIT - BACK



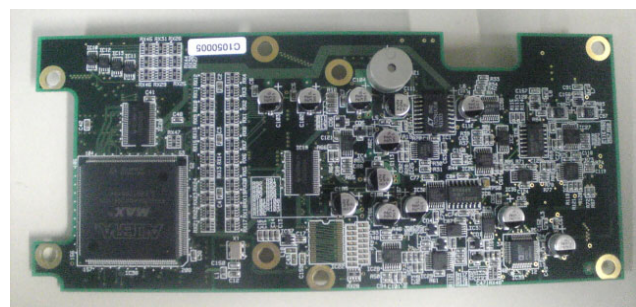
ELEMENT CIRCUIT - FRONT



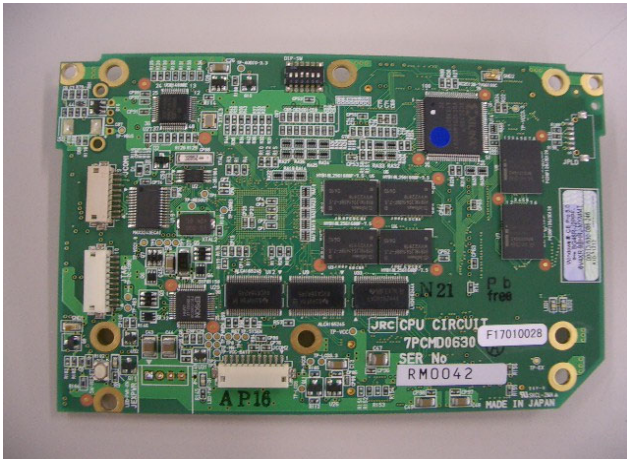
ELEMENT CIRCUIT - BACK



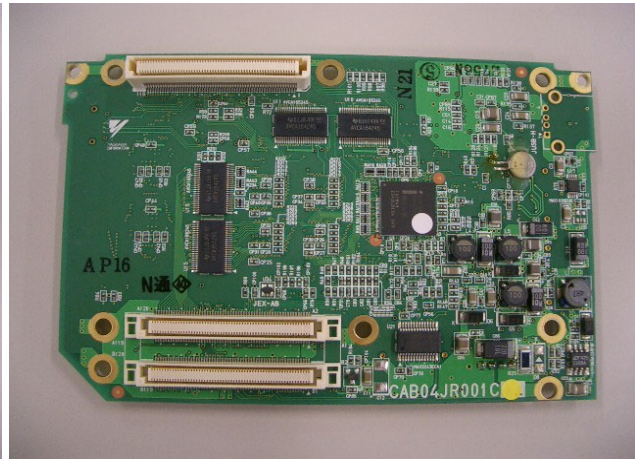
CTRL CIRCUIT - FRONT



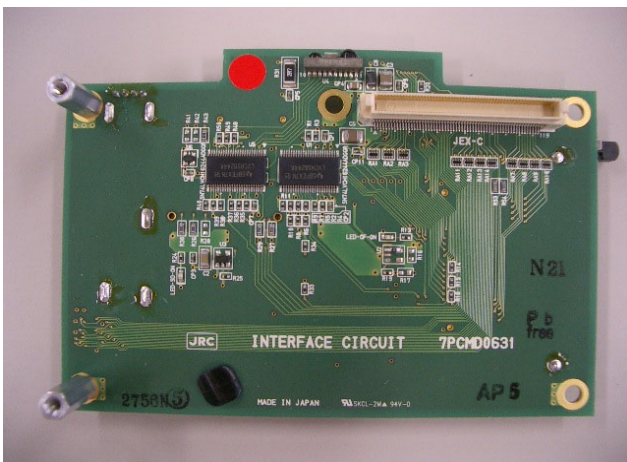
CTRL CIRCUIT - BACK



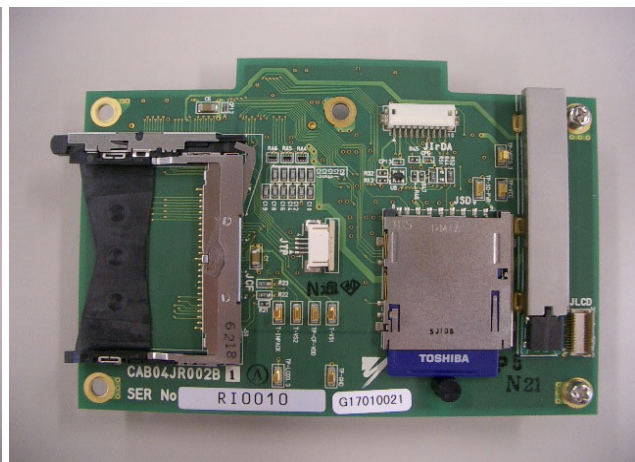
CPU MAIN CIRCUIT - FRONT



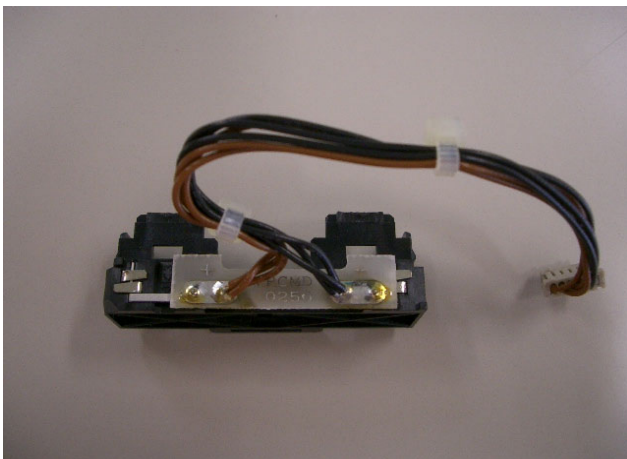
CPU MAIN CIRCUIT - BACK



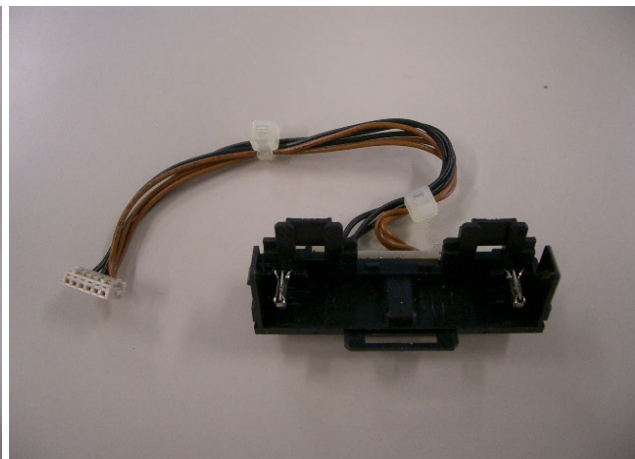
CPU I/F CIRCUIT - FRONT



CPU I/F CIRCUIT - BACK



BATTERY CIRCUIT - FRONT



BATTERY CIRCUIT - BACK