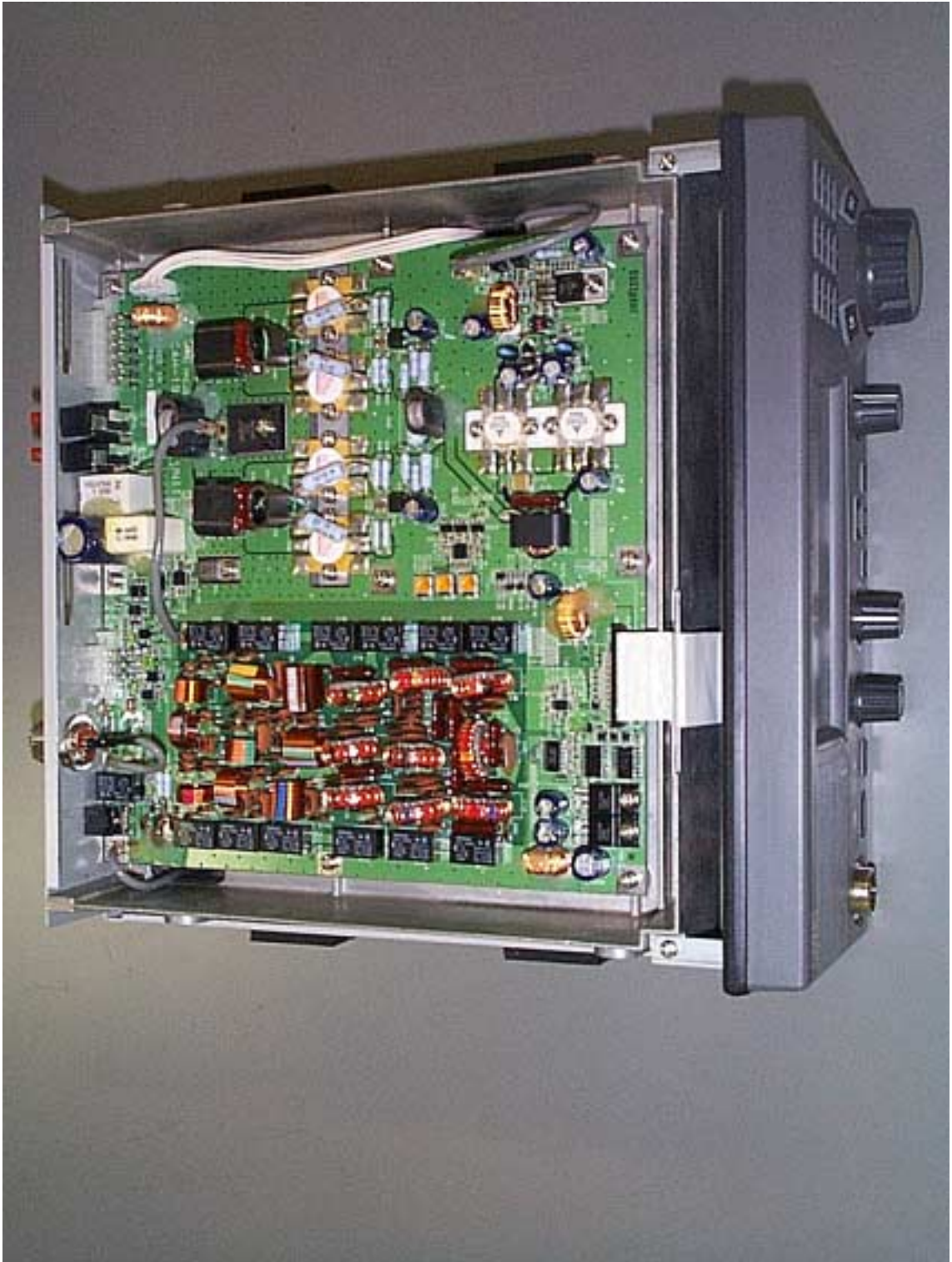




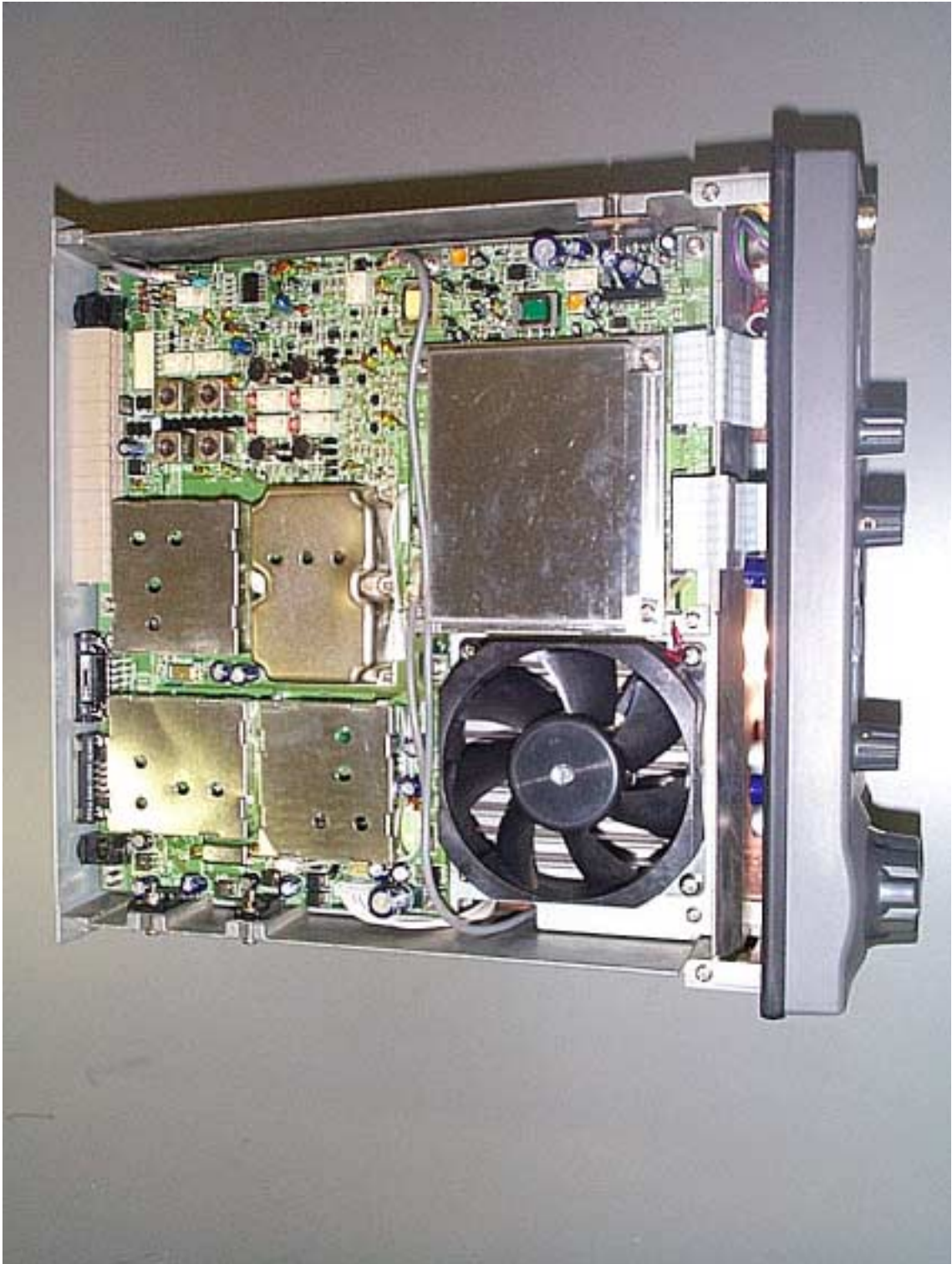
3.3.1 JSB-196GM (1/4)
RADIOTELEPHONE



3.3.2 JSB-196GM (2/4)
CONTROL UNIT



3.3.3 JSB-196GM (3/4)
PA UNIT



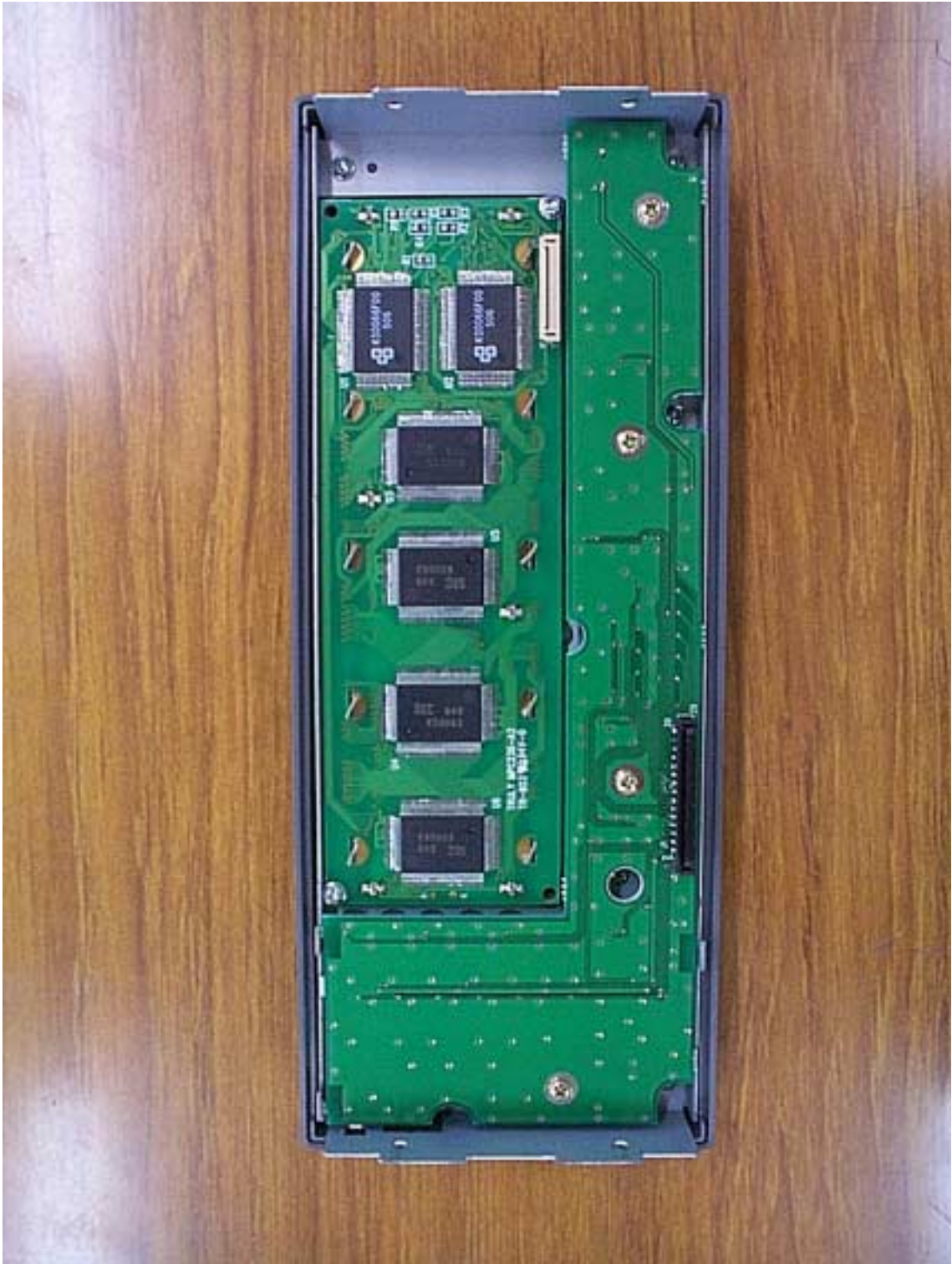
**3.3.4 JSB-196GM (4/4)
TRX UNIT**



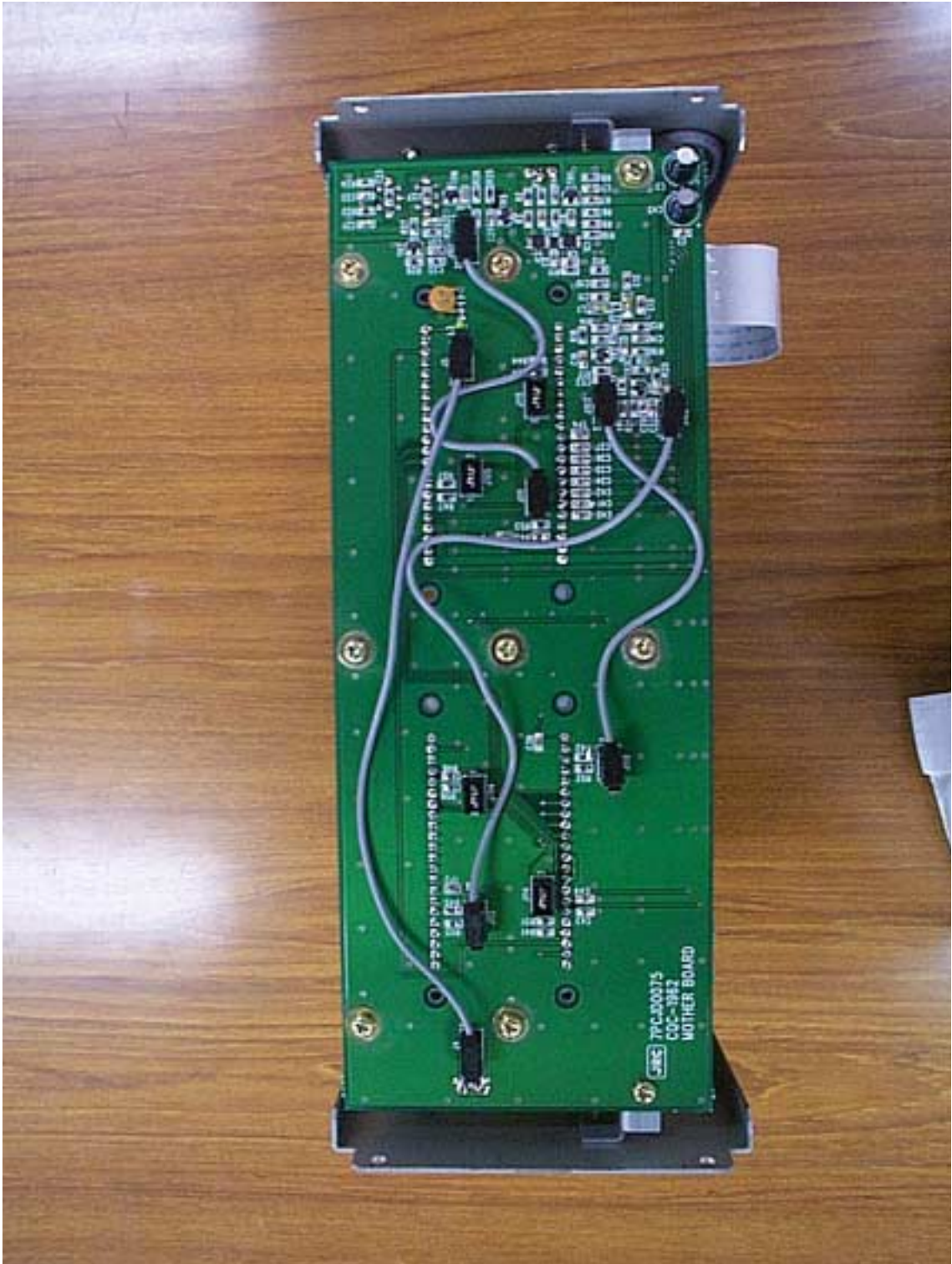
3.3.5 NCT-196N (1/7)
DSC/NBDP MODEM



3.3.6 NCT-196N (2/7)
NAME PLATE



**3.3.7 NCT-196N (3/7)
PANEL BOARD**



3.3.8 NCT-196N (4/7)
MOTHER BOARD



**3.3.9 NCT-196N (5/7)
TOP VIEW**



**3.3.10 NCT-196N (6/7)
W/K RECEIVER**



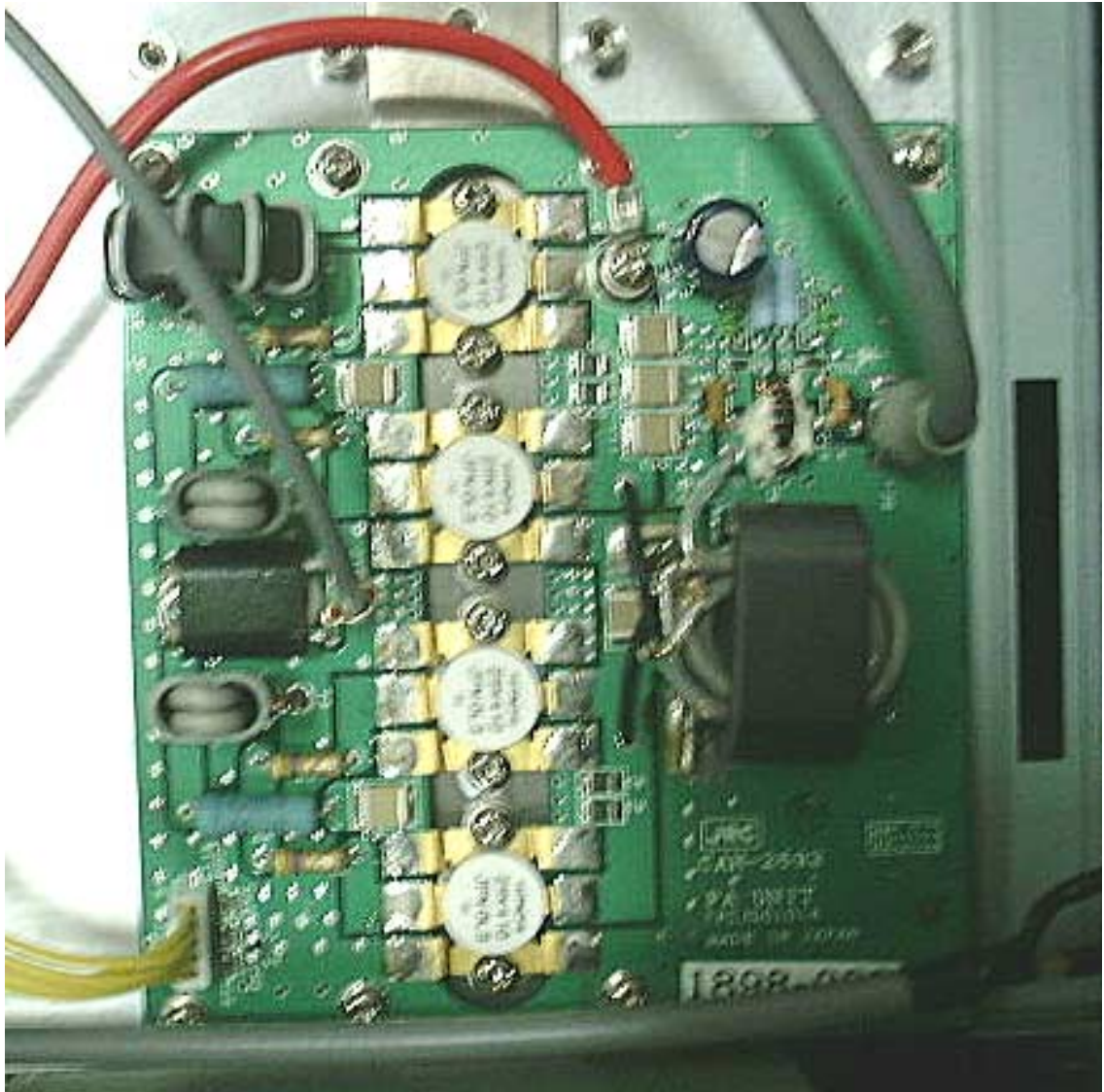
3.3.11 NCT-196N (7/7)
CONTROL BOARD



**3.3.12 NAH-692 (1/6)
POWER AMPLIFIER**



3.3.13 NAH-692 (2/6)
NAME PLATE



3.3.14 NAH-692 (3/6)
PA UNIT



**3.3.15 NAH-692 (4/6)
PA CONTROL UNIT**



3.3.16 NAH-692 (5/6)
MAIN CONTROL UNIT



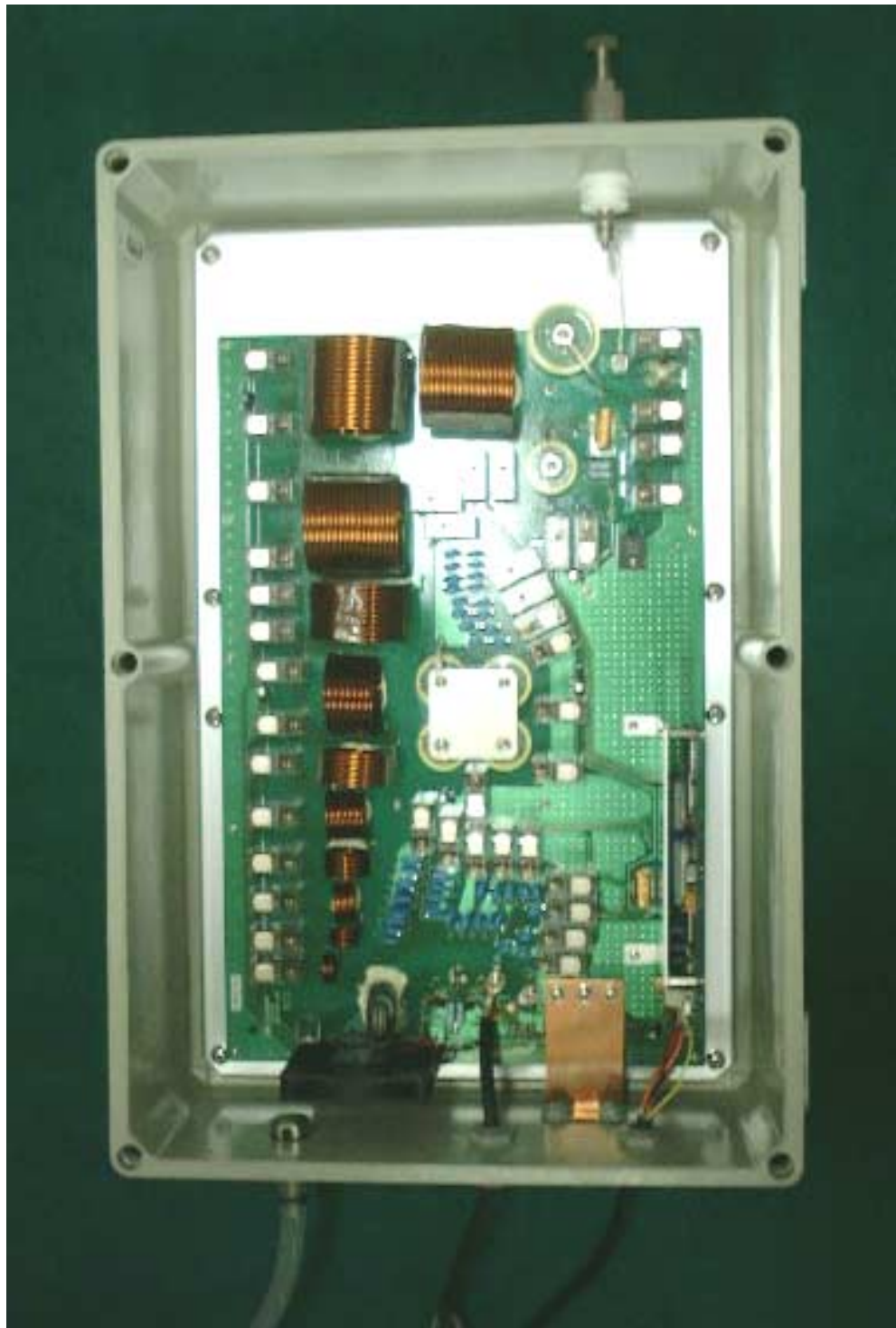
3.3.17 NAH-692 (6/6)
PS UNIT



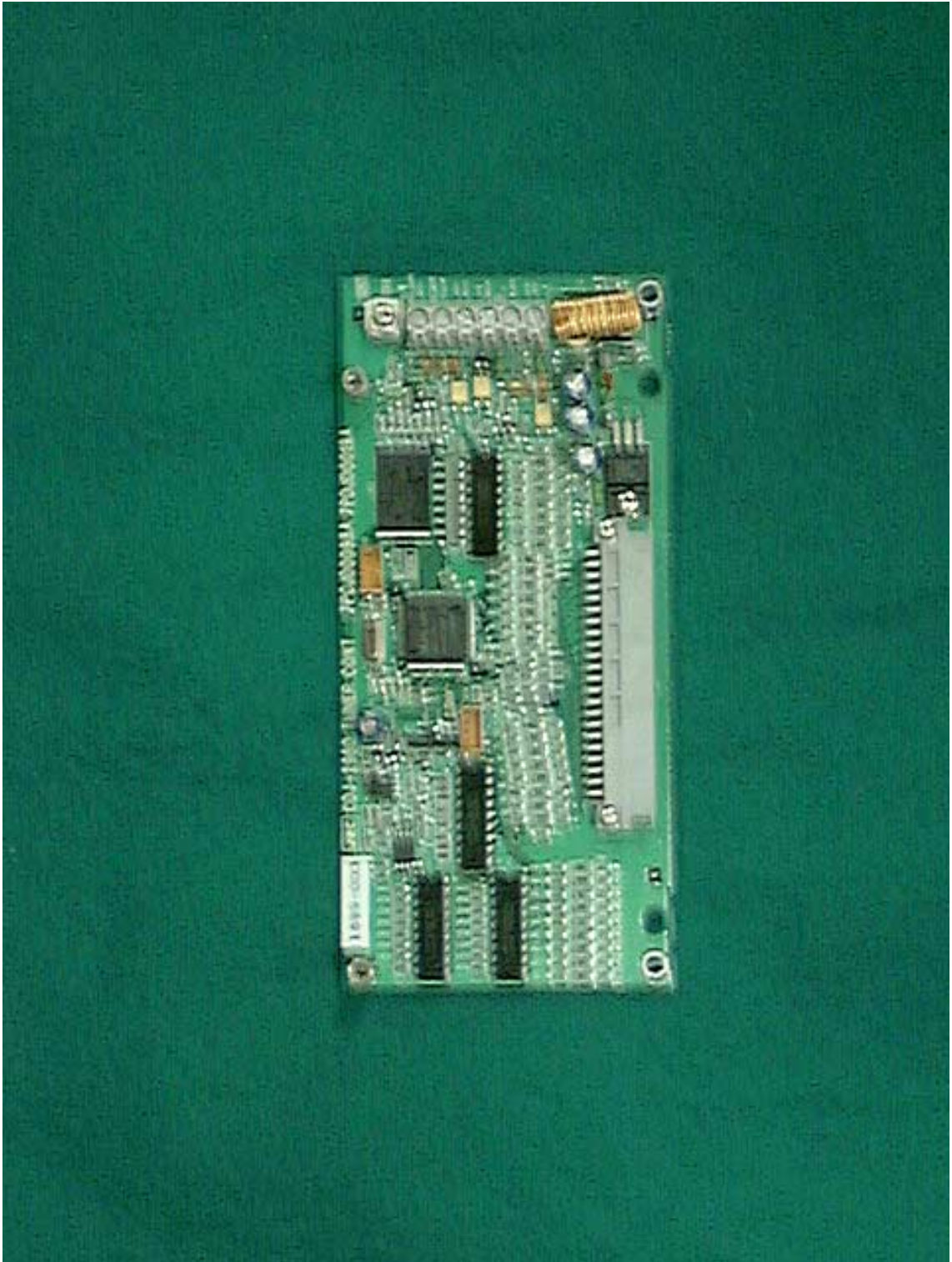
3.3.18 NFC-296 (1/4)
ANTENNA TUNER



3.3.19 NFC-296 (2/4)
NAME PLATE



3.3.20 NFC-296 (3/4)
MATCHING UNIT



3.3.21 NFC-296 (4/4)
TUNER CONT



3.3.22 NDZ-127J
DTE



**3.3.23 NDF-268
KEYBOARD**



**3.3.24 NKG-800
PRINTER**