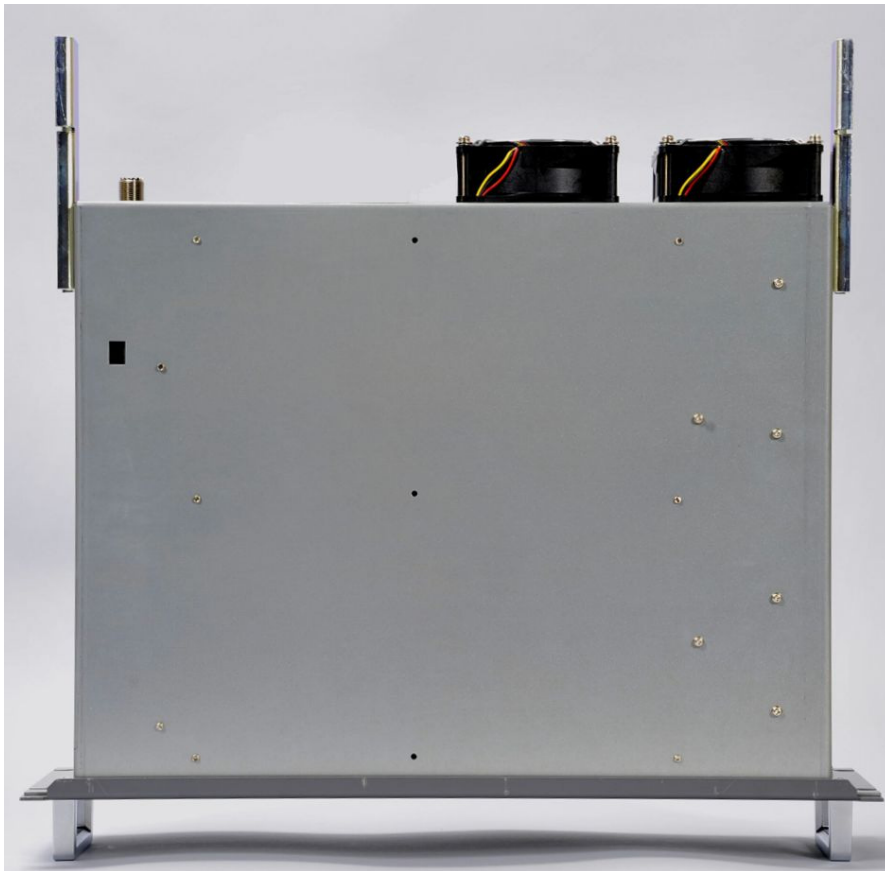
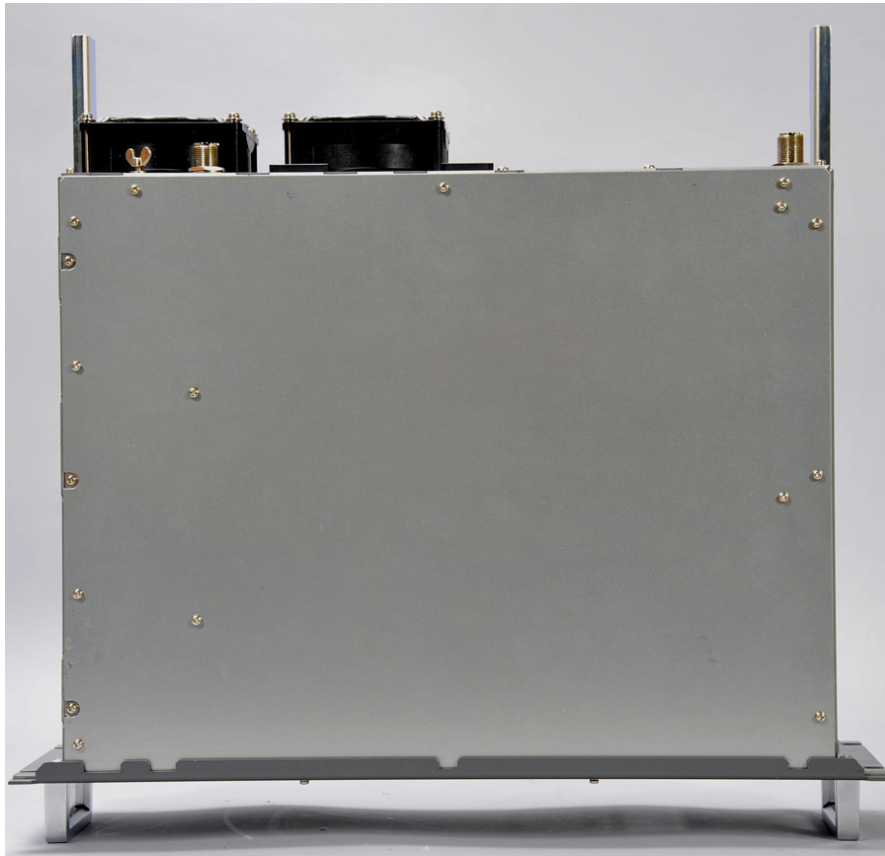


# PHOTOGRAPHS (UNIT AND PCB)

## 1. NTD-2250 TRANSCEIVER

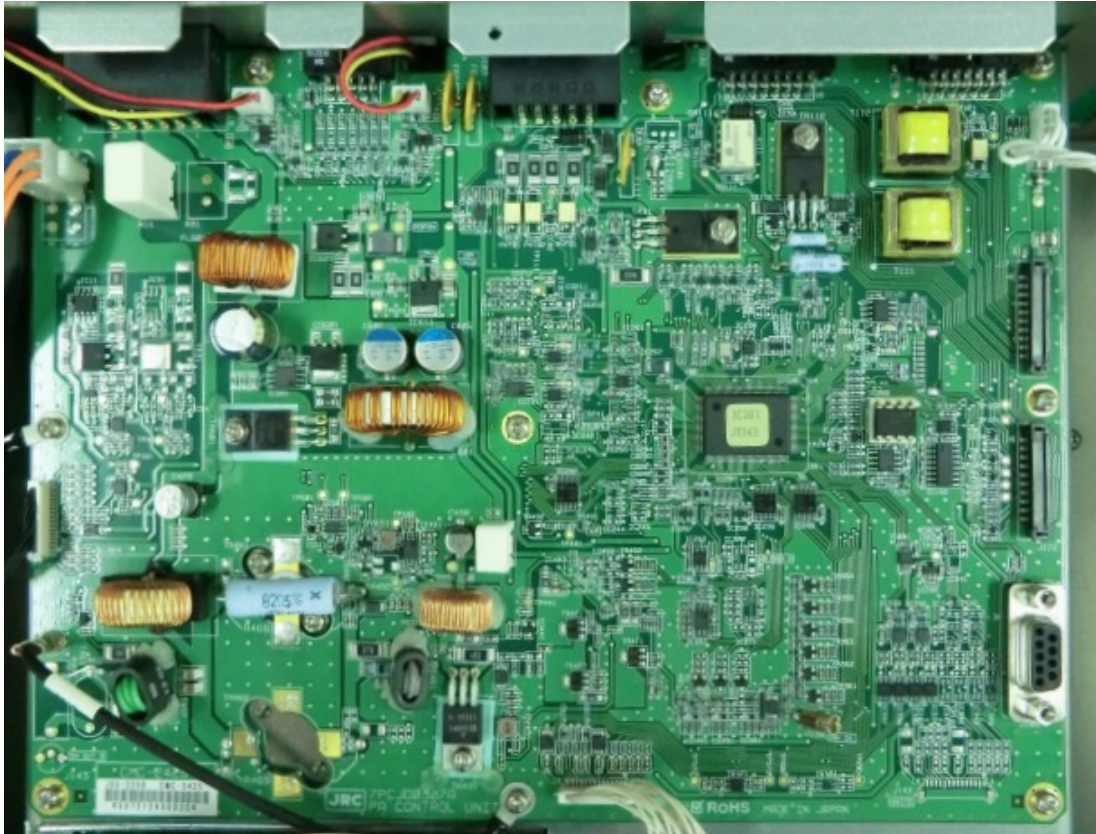
### (1) NTD-2250 TRANSCEIVER



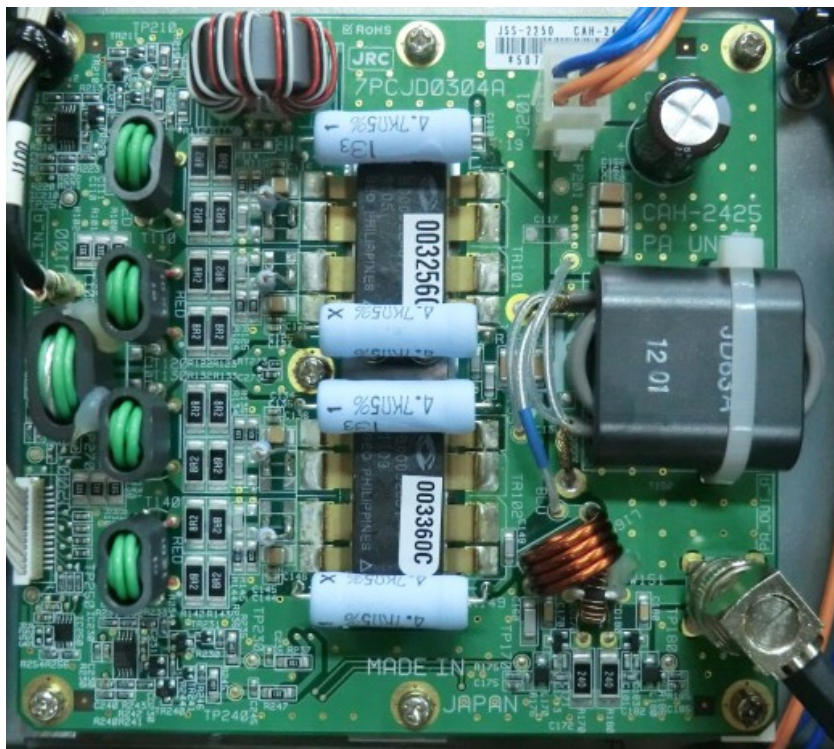




(2) CMC-2425 PA CONTROL UNIT

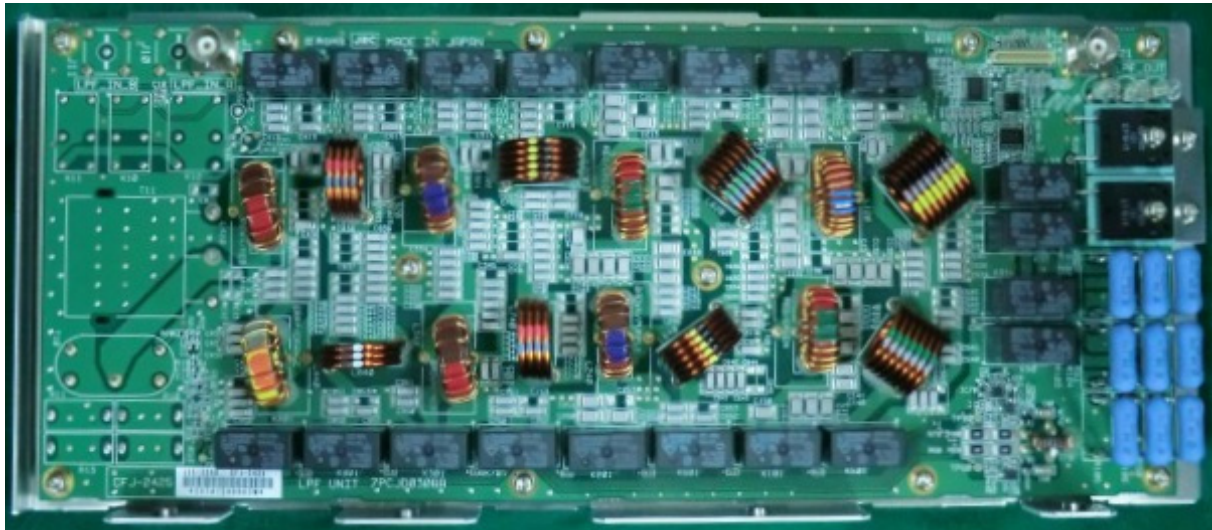


(3) CAH-2425 PA UNIT





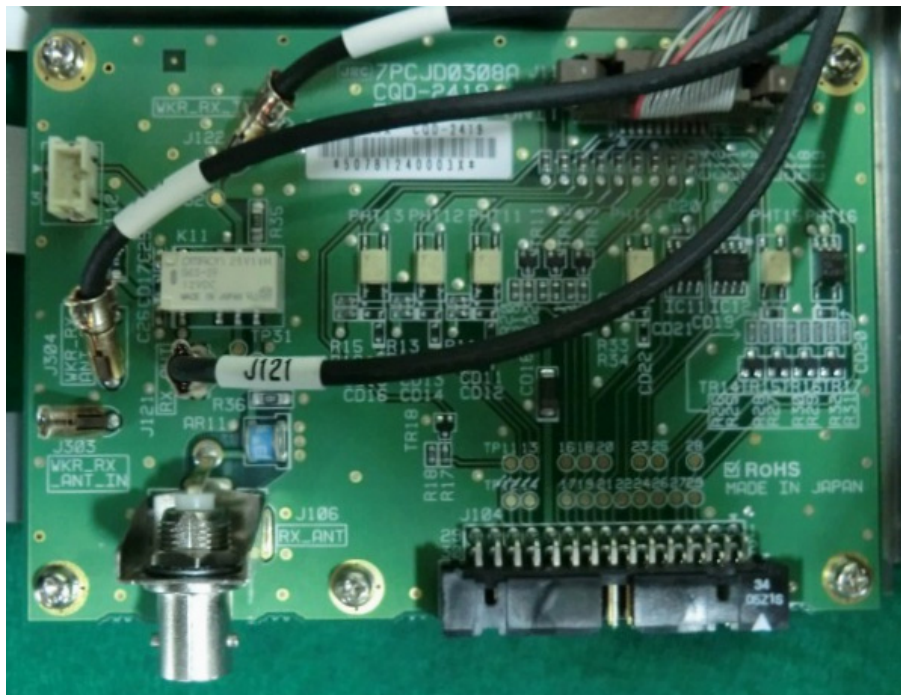
(4) CFJ-2425 LPF UNIT



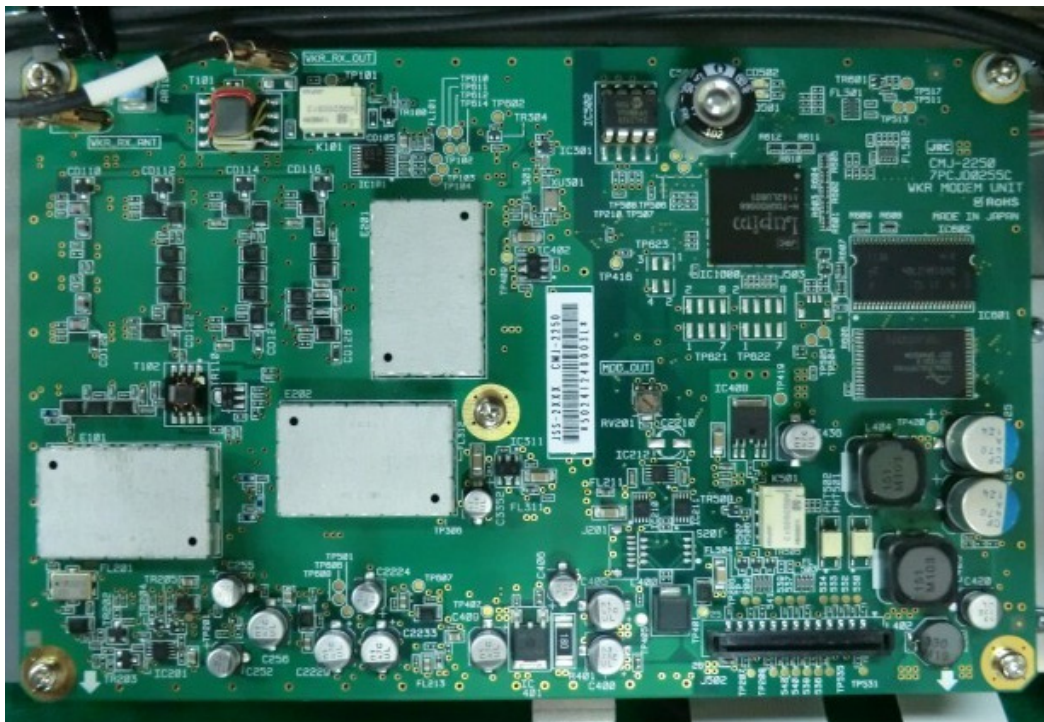
(5) CMN-2250 TRX UNIT



(6) CQD-2419 EXTERNAL UNIT

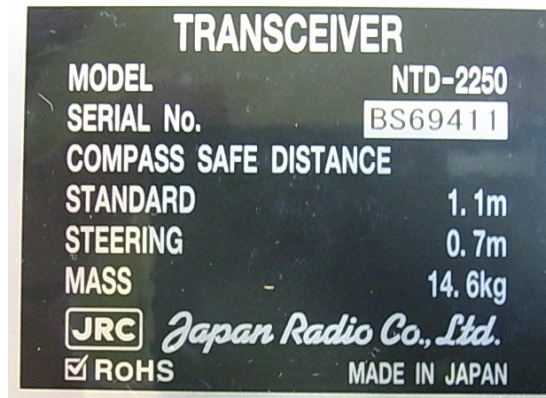


(7) CMJ-2250 WKR MODEM UNIT



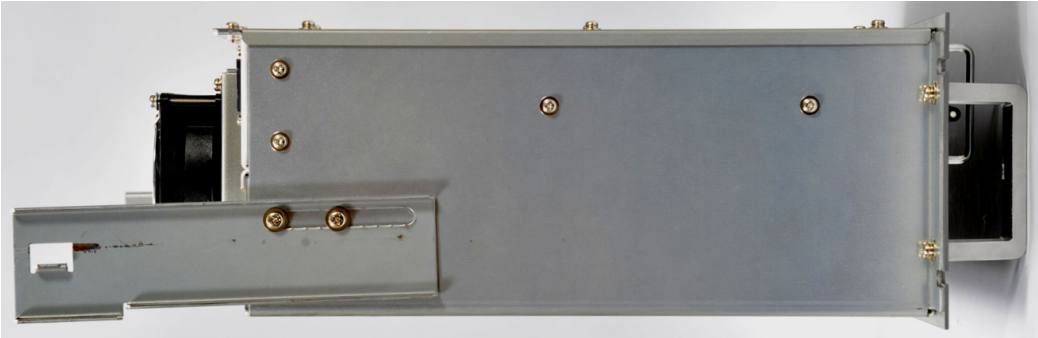


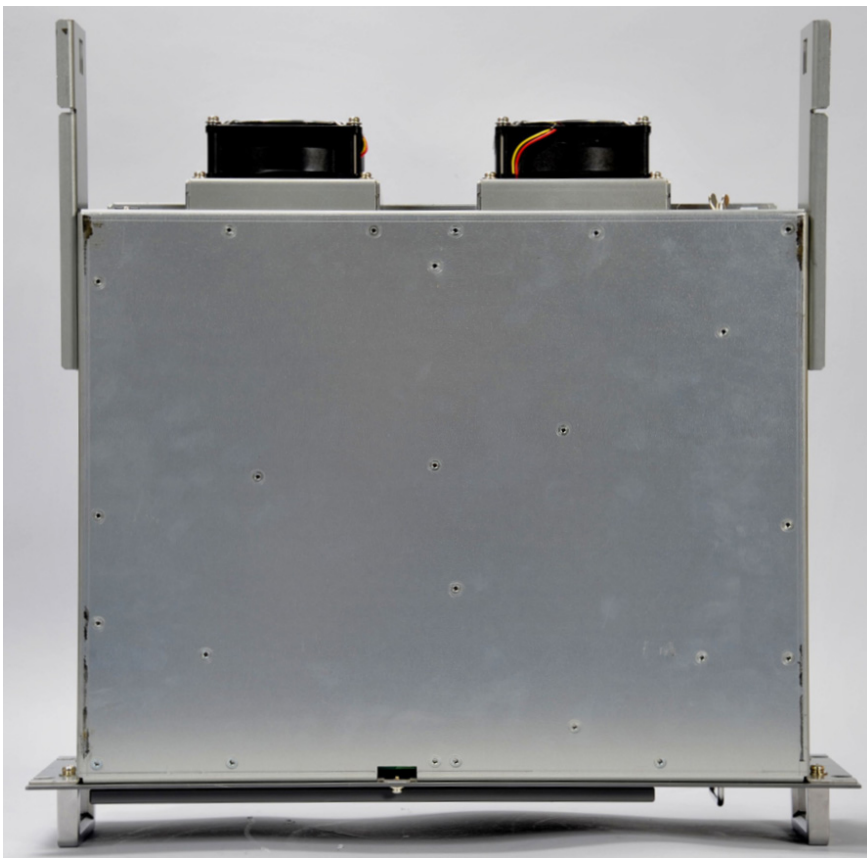
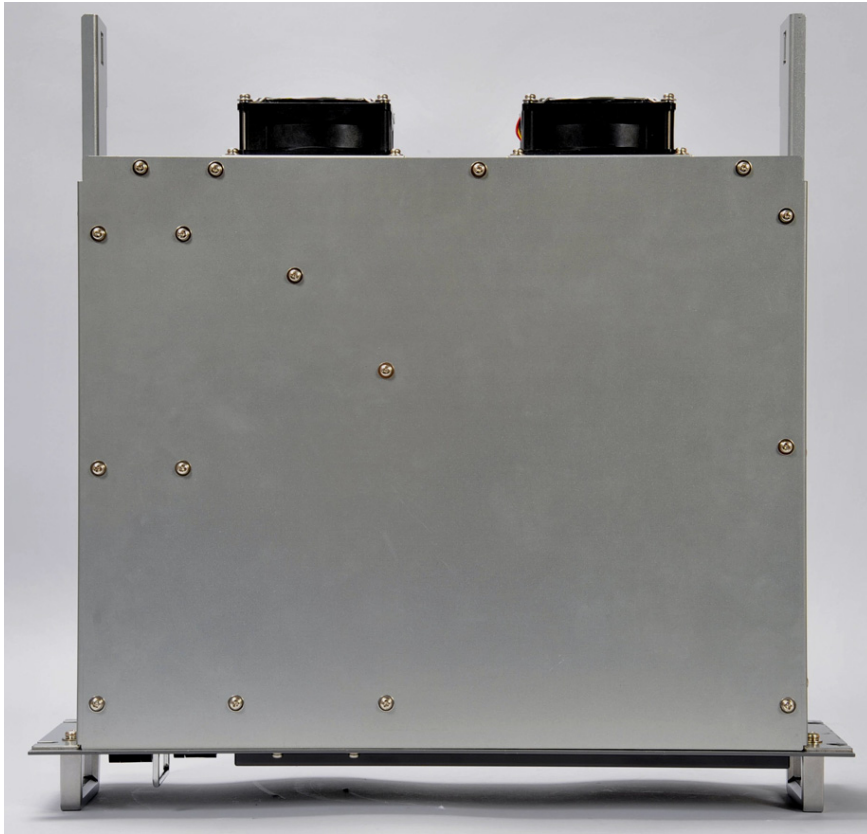
(8) NTD-2250 TRANSCEIVER (NAME PLATE)



## 2. NBD-2250 POWER SUPPLY

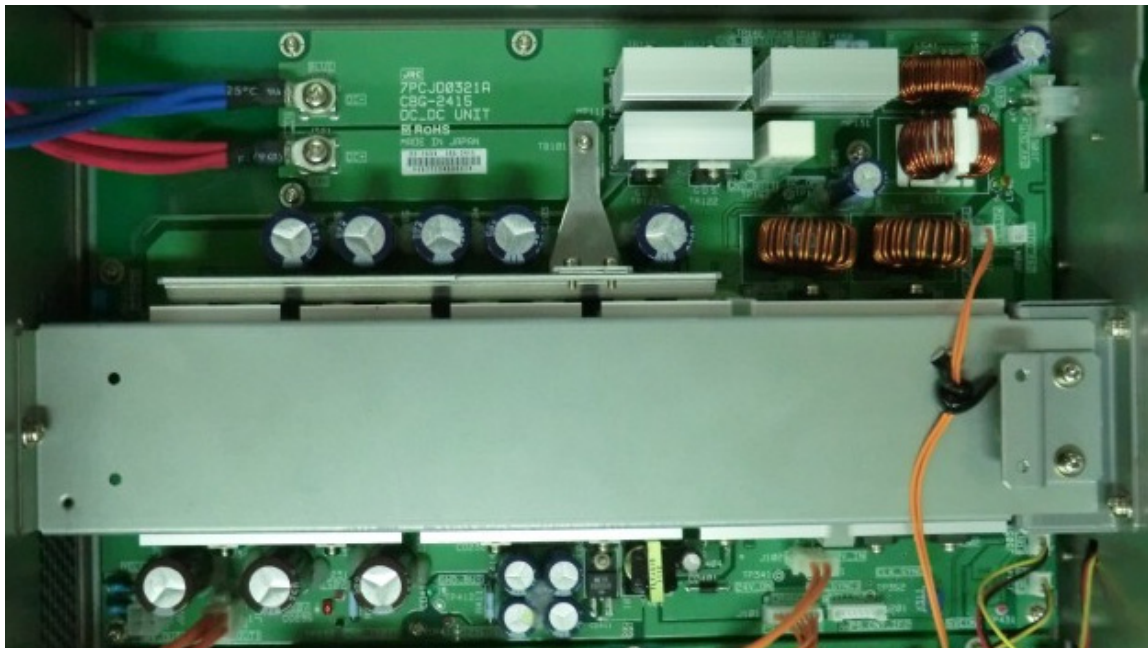
### (1) NBD-2250 POWER SUPPLY







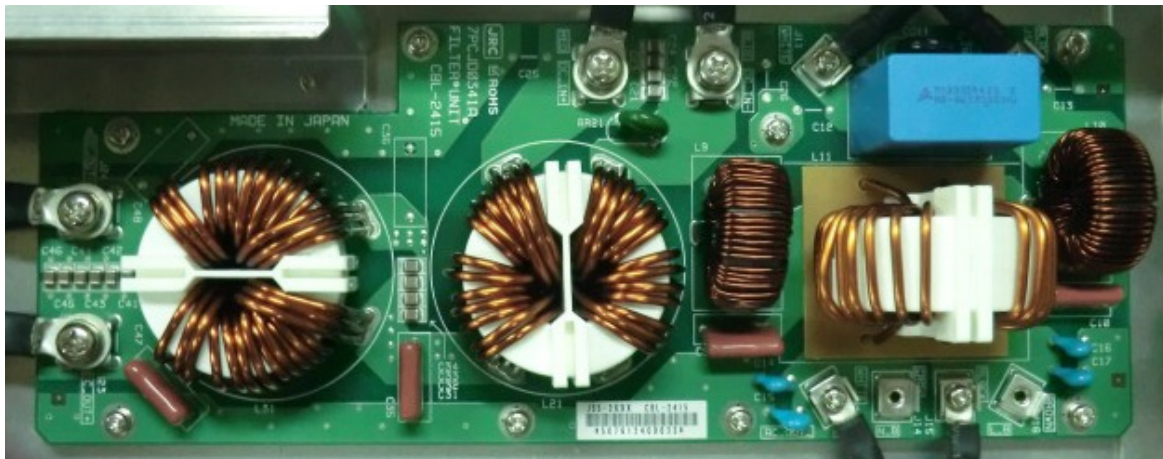
(2) CBG-2415 DC/DC UNIT



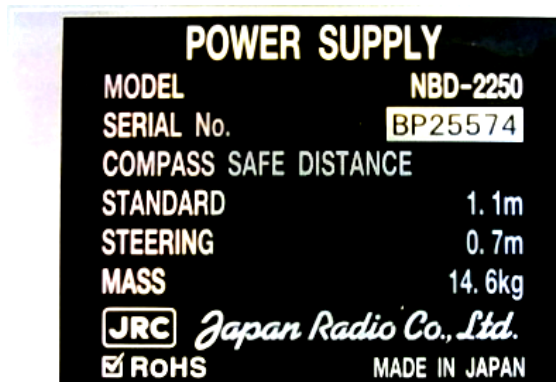
(3) CBG-2416 PA\_PS UNIT



(4) CBL-2415 FILTER UNIT



(5) NBD-2250 POWER SUPPLY (NAME PLATE)



### 3. NFC-2250 ANTENNA TUNER

#### (1) NFC-2250 ANTENNA TUNER



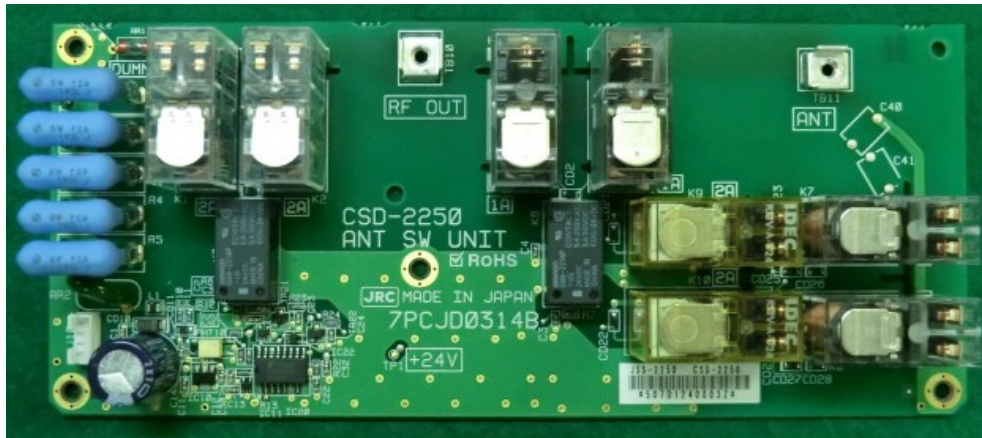




**(2) CFG-2250 MATCHING UNIT**



(3) CSD-2250 ANT SW UNIT



(4) CDJ-2525 TUNER CONT

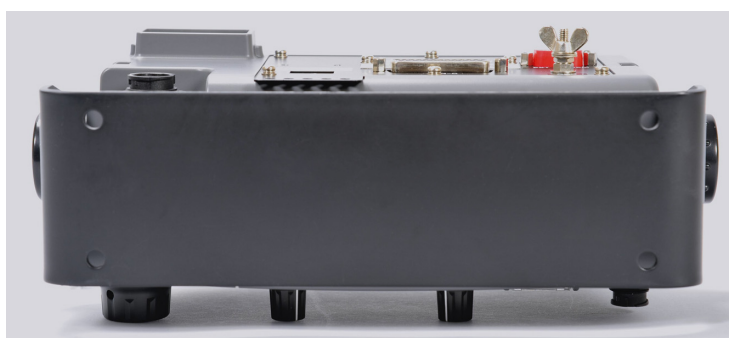


(5) NFC-2250 ANTENNA TUNER (NAME PLATE)



## 4. NCM-2150 MF/HF CONTROLLER

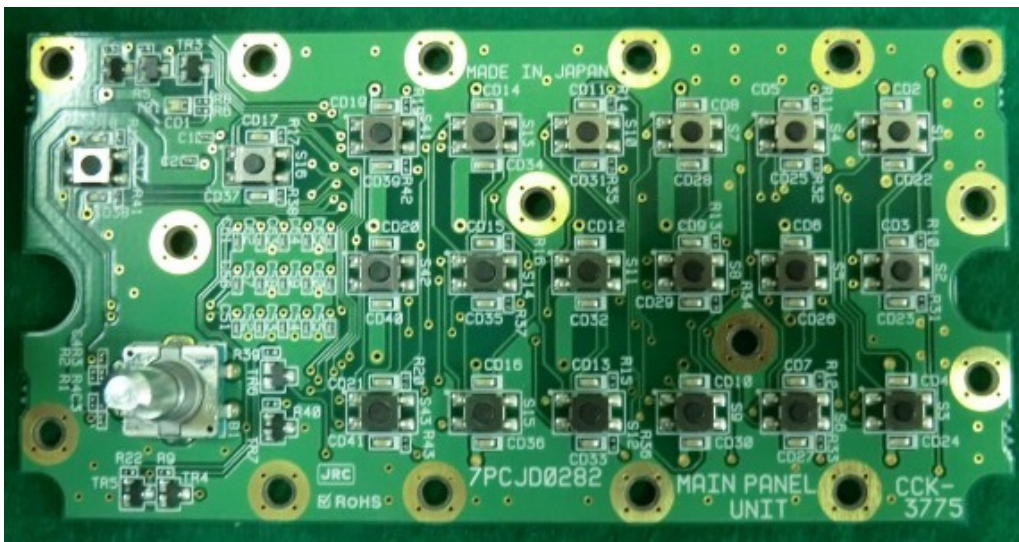
### (1) NCM-2150 MF/HF CONTROLLER



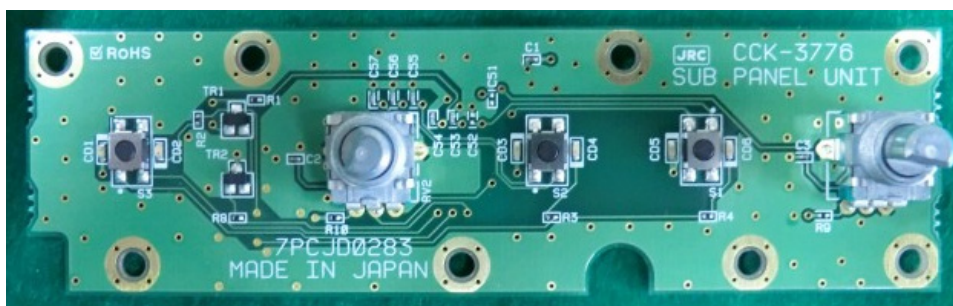




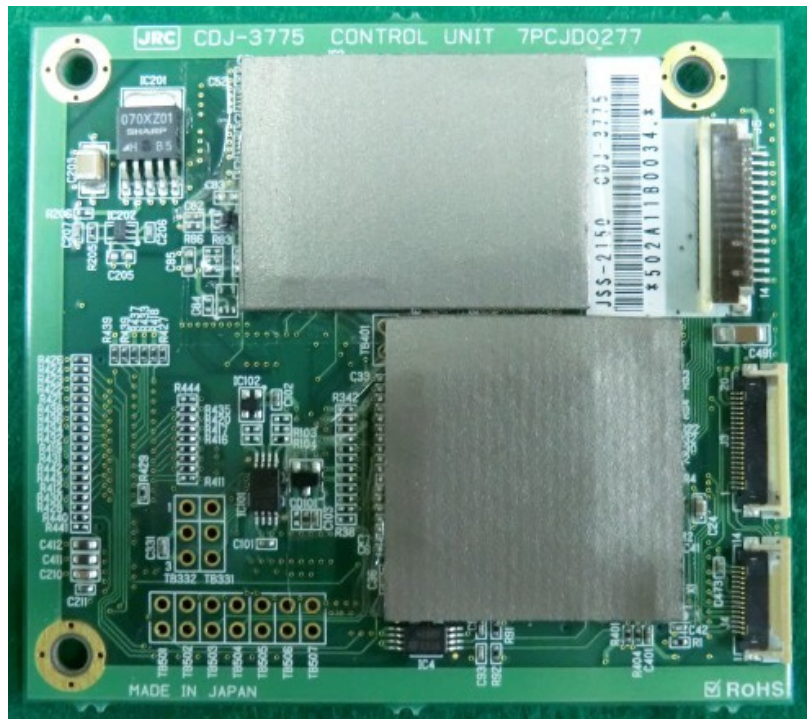
(2) CCK-3775 MAIN PANEL UNIT



(3) CCK-3776 SUB PANEL UNIT



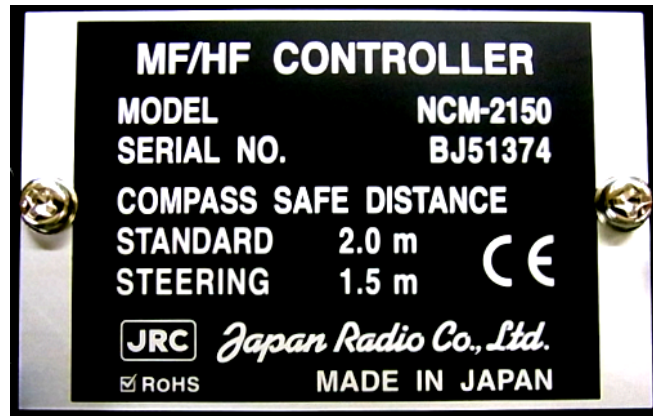
(4) CDJ-3775 CONTROL UNIT



(5) CMV-3775 AF CONT UNIT



(6) NCM-2150 MF/HF CONTROLLER (NAME PLATE)





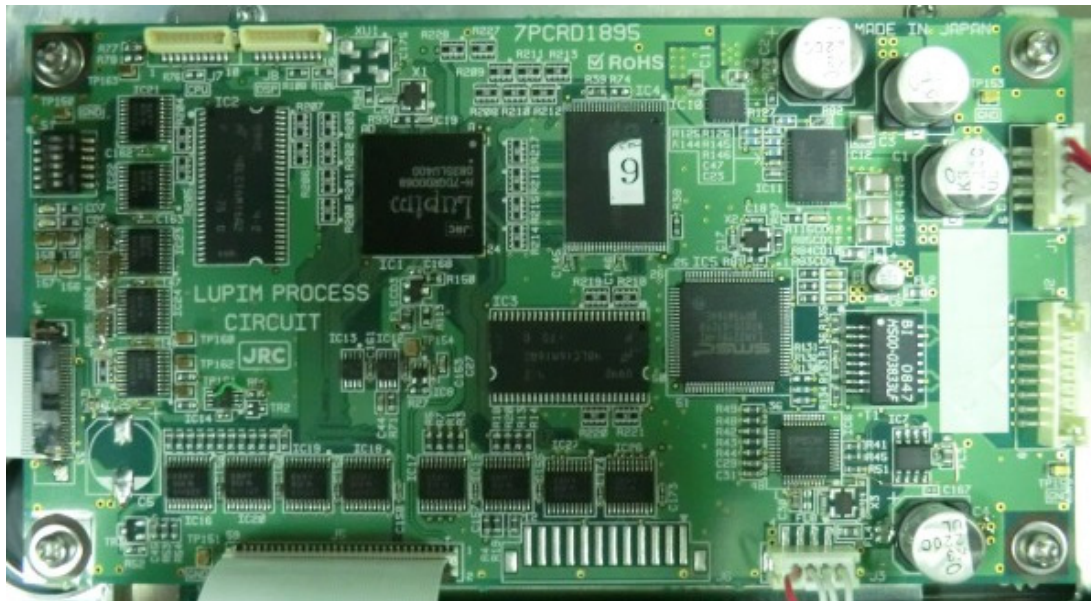
## 5. NDZ-227 DATA TERMINAL

### (1) NDZ-227 DATA TERMINAL





(2) CDC-1346B PROCESS CIRCUIT

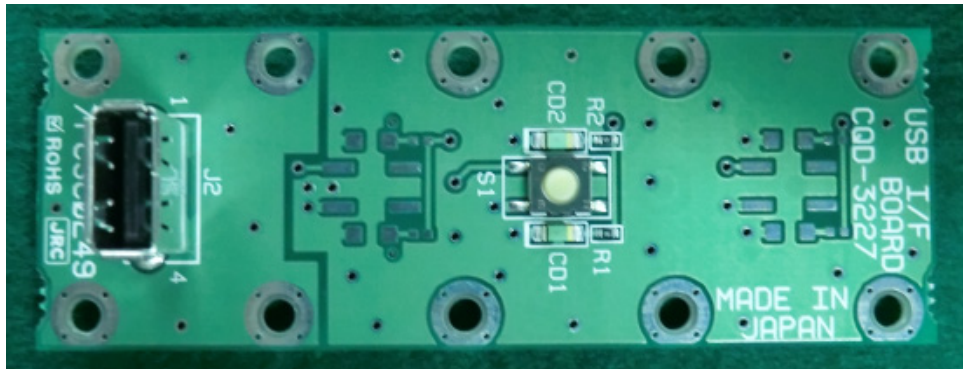


(3) CMH-3227 I/F UNIT

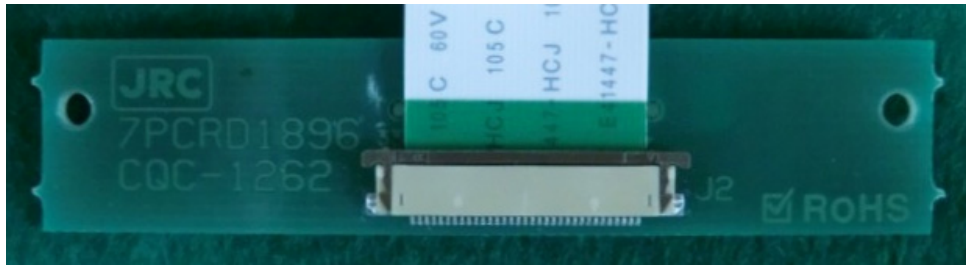




(4) CQD-3227 USB I/F BOARD



(5) CQD-1262 I/F CIRCUIT

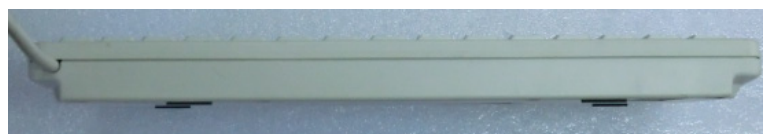


(6) NDZ-227 DATA TERMINAL (NAME PLATE)



## 6. NDF-369 KEYBOARD

### (1) NDF-369 KEYBOARD

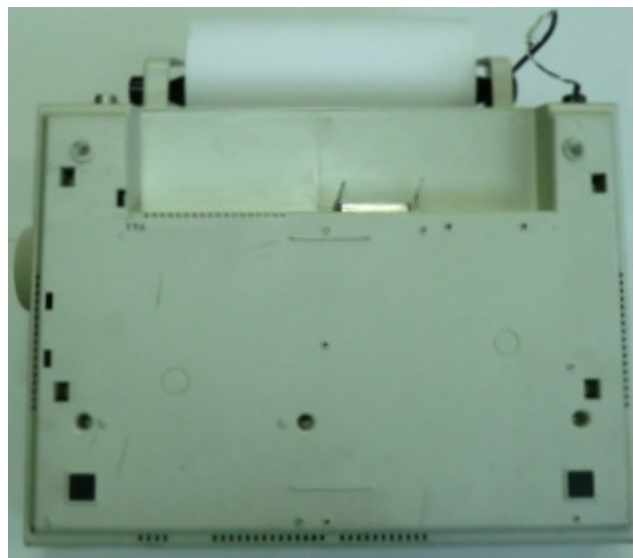


**7. NKG-800 PRINTER**

**(1) NKG-800 PRINTER**







(2) NKG-800 PRINTER (NAME PLATE)

