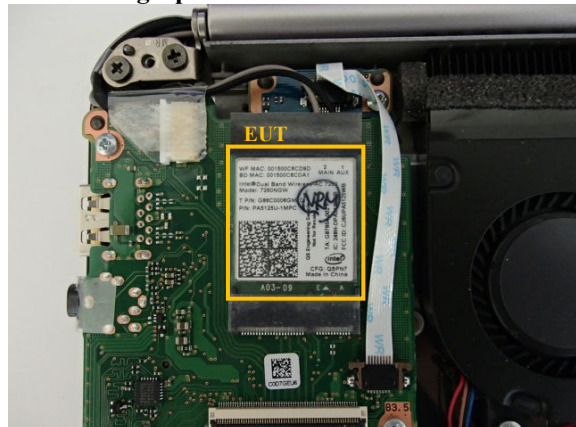


## **APPENDIX 4 : Photographs of test setup**

### **1. Photographs of EUT**

#### **EUT Photograph**

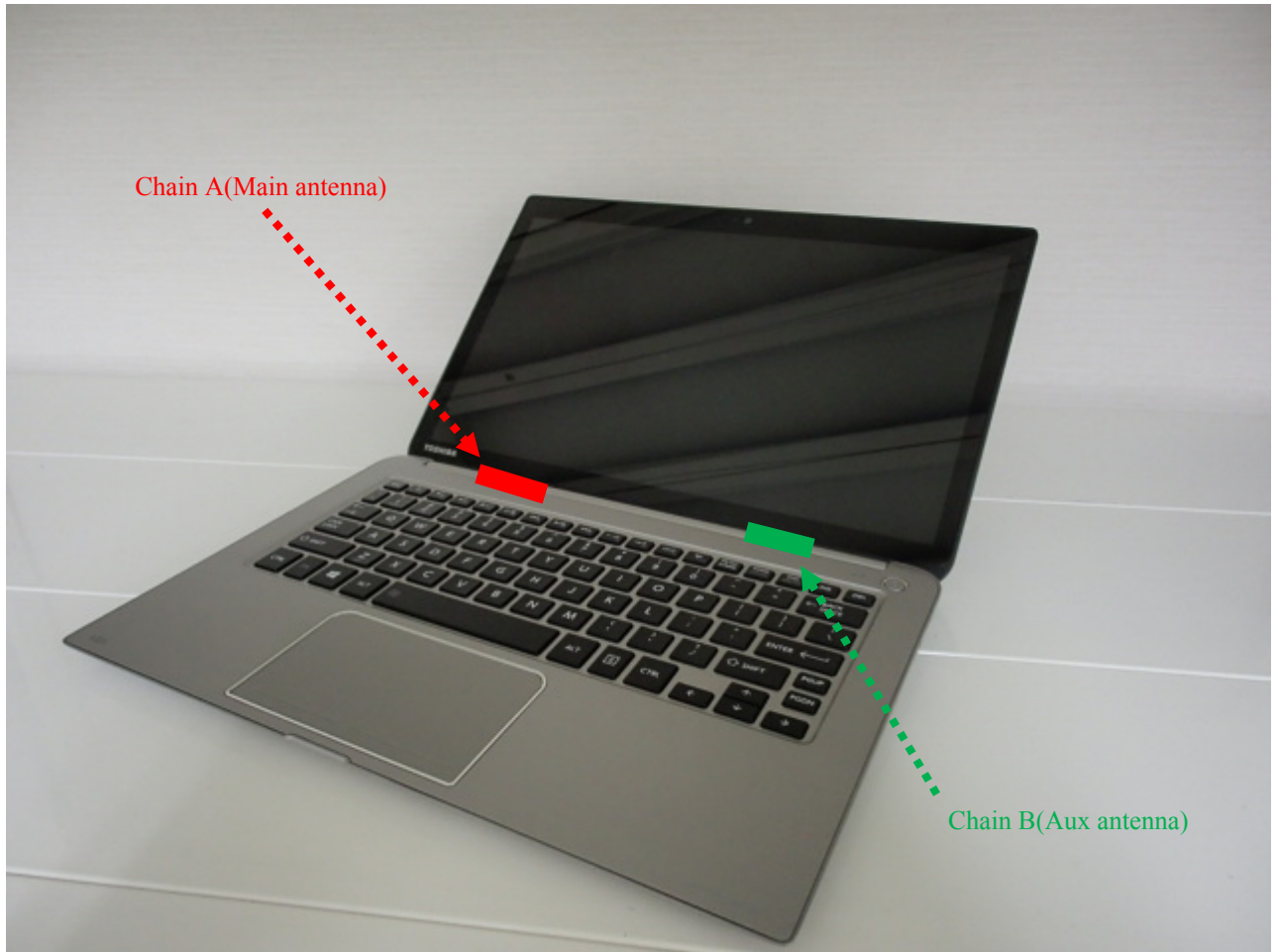


#### **Information of host device**

The EUT is used only with limited host device of similar composition.  
The SAR test was performed with the limited host device.

Type of Equipment	Laptop Computer
Model Number	Model R20
Serial Number	SC1-120
Condition of EUT	Production prototype (* . Not for sale: This sample is equivalent to mass-produced items.)
Receipt Date of Sample	August 7, 2013 (* . No modification by the Lab.)
Country of Mass-production	China
Rating	DC19V
Category Identified	Portable device
Feature of EUT	The EUT is a laptop computer installed Wireless LAN and Bluetooth module.
Simultaneous transmission	Wireless LAN cannot transmit simultaneously with Bluetooth
Size of EUT	W:316 mm * D:207 mm * H:17.8 mm

2. Antenna location and Photographs of host device



Laptop LCD Open

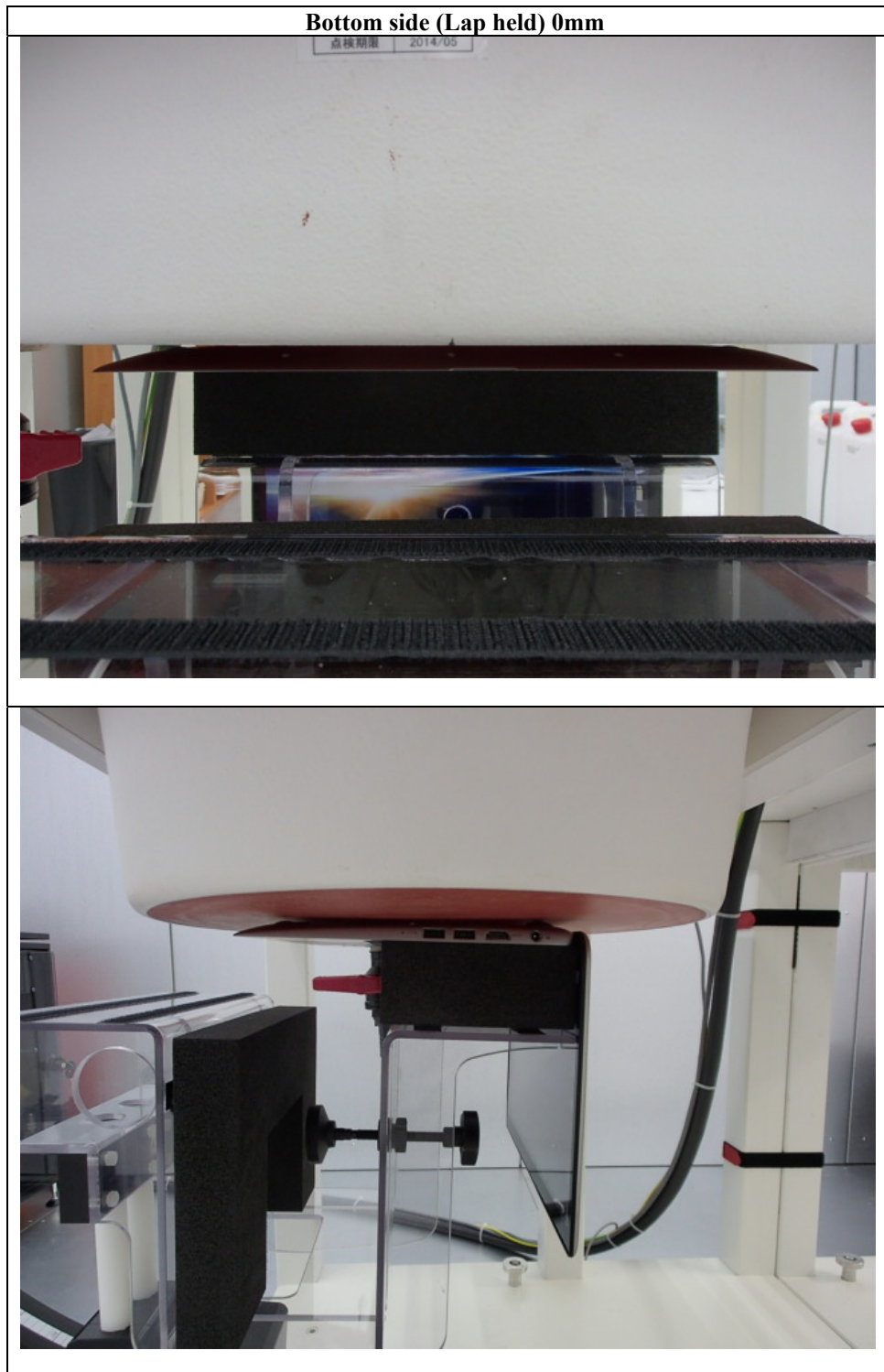


LCD Close



Bottom

### 3. Photographs of setup



**Rear side 0mm**



**End of Report**