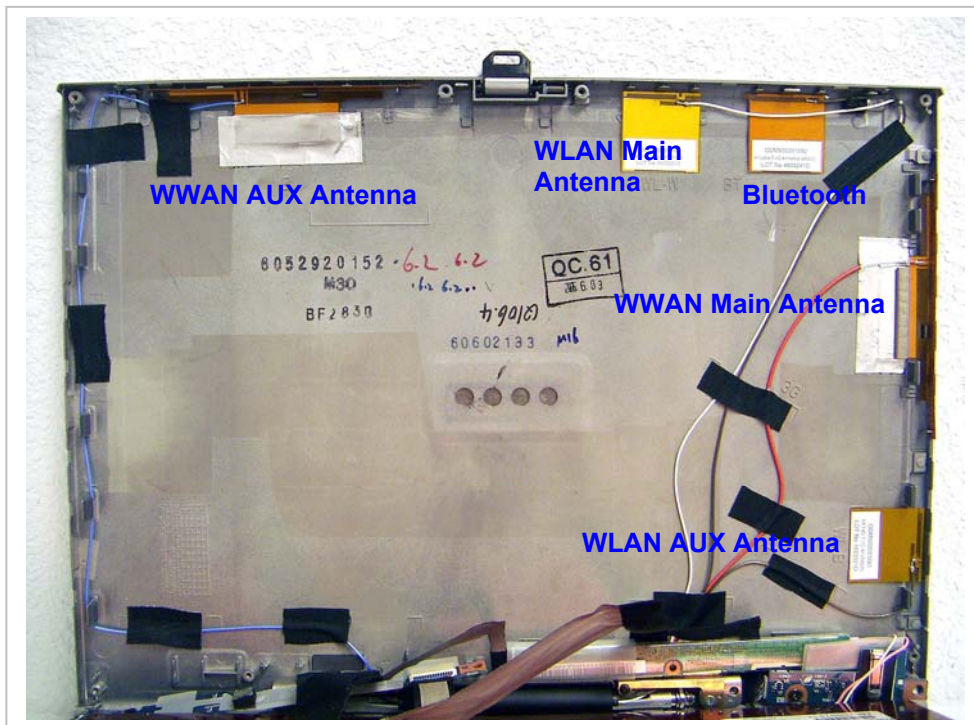


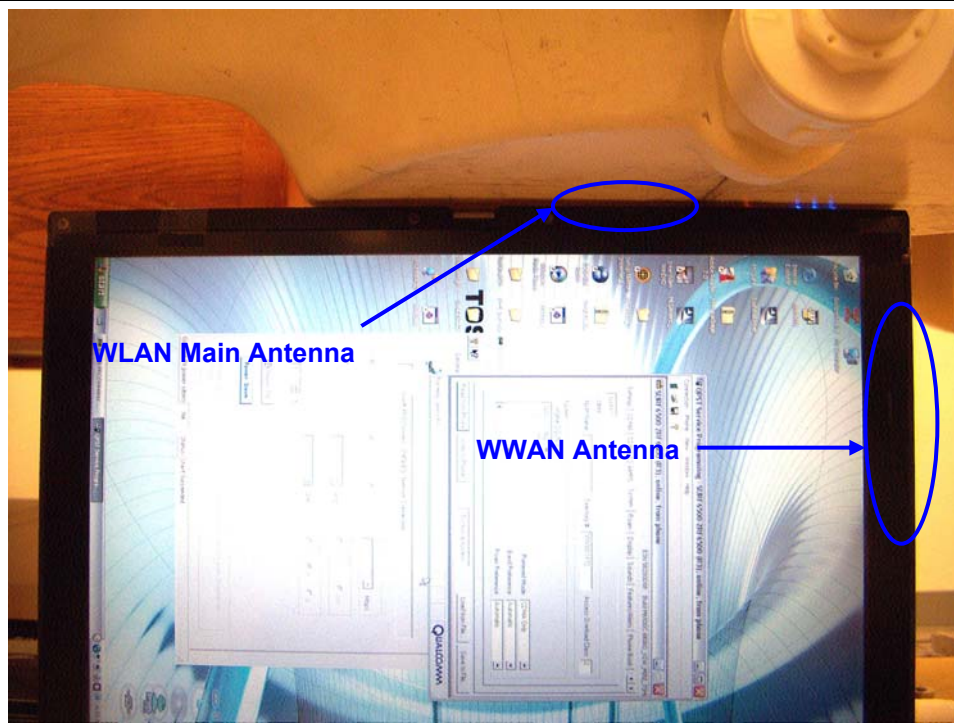
Antenna Location



7 SAR MEASUREMENT RESULTS

7.1 2.4GHZ

7.1.1 UNDERARM POSITION-MAIN ANTENNA



802.11b (1Mbps)

Channel	f (MHz)	Measured SAR 1g (mW/g)	Power Drift (dB)	Extrapolated ¹⁾ SAR 1g (mW/g)
1	2412	0.961	-0.107	0.985
6	2437	0.918	0.000	0.918
11	2462	0.951	-0.111	0.976
1 ⁴⁾	2412	0.982	0.000	0.982

802.11g (6 Mbps)

Channel	f (MHz)	Measured SAR 1g (mW/g)	Power Drift (dB)	Extrapolated ¹⁾ SAR 1g (mW/g)
1	2412			
6	2437	0.753	0.000	0.753
11	2462			

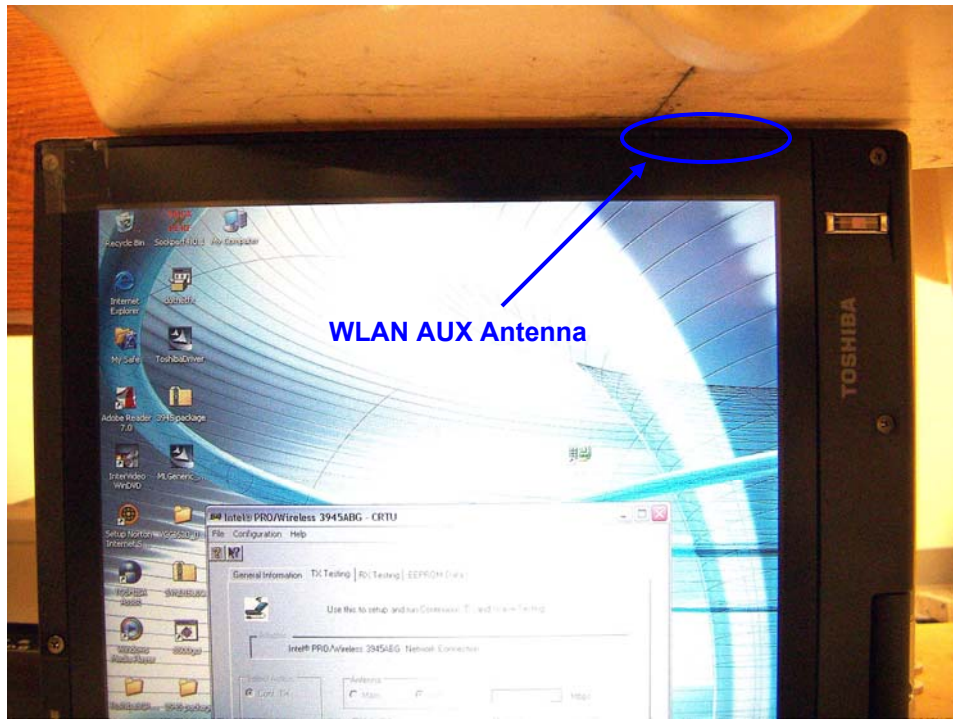
802.11g Turbo (6 Mbps)

Channel	f (MHz)	Measured SAR 1g (mW/g)	Power Drift (dB)	Extrapolated ¹⁾ SAR 1g (mW/g)
6	2437	0.737	0.000	0.737

Notes:

- 1) The exact method of extrapolation is $\text{Measured SAR} \times 10^{(-\text{drift}/10)}$. The SAR reported at the end of the measurement process by the DASY4 system can be scaled up by the Power drift to determine the SAR at the beginning of the measurement process.
- 2) The SAR measured at the middle channel for this configuration is at least 3 dB lower (0.8 mW/g) than SAR limit (1.6 mW/g), thus testing at low & high channel is optional.
- 3) Please see attachments for the detailed measurement data and plots showing the maximum SAR location of the EUT.
- 4) Collocation with CDMA Module and Bluetooth.

7.1.2 UNDERARM POSITION-AUX ANTENNA



802.11b (1Mbps)

Channel	f (MHz)	Measured SAR 1g (mW/g)	Power Drift (dB)	Extrapolated ¹⁾ SAR 1g (mW/g)
1	2412	0.521	-0.184	0.544
6	2437			
11	2462			

802.11g (6 Mbps)

Channel	f (MHz)	Measured SAR 1g (mW/g)	Power Drift (dB)	Extrapolated ¹⁾ SAR 1g (mW/g)
1	2412	0.430	-0.178	0.448
6	2437			
11	2462			

802.11g Turbo (6 Mbps)

Channel	f (MHz)	Measured SAR 1g (mW/g)	Power Drift (dB)	Extrapolated ¹⁾ SAR 1g (mW/g)
6	2437	0.470	0.000	0.470

Notes:

- 1) The exact method of extrapolation is $\text{Measured SAR} \times 10^{(-\text{drift}/10)}$. The SAR reported at the end of the measurement process by the DASY4 system can be scaled up by the Power drift to determine the SAR at the beginning of the measurement process.
- 2) The SAR measured at the middle channel for this configuration is at least 3 dB lower (0.8 mW/g) than SAR limit (1.6 mW/g), thus testing at low & high channel is optional.
- 3) Please see attachments for the detailed measurement data and plots showing the maximum SAR location of the EUT.

7.1.3 LAP-HELD POSITION-MAIN ANTENNA



802.11b (1Mbps)

Channel	f (MHz)	Measured SAR 1g (mW/g)	Power Drift (dB)	Extrapolated ¹⁾ SAR 1g (mW/g)
1	2412			
6	2437	0.029	-0.070	0.030
11	2462			

802.11g (6 Mbps)

Channel	f (MHz)	Measured SAR 1g (mW/g)	Power Drift (dB)	Extrapolated ¹⁾ SAR 1g (mW/g)
1	2412			
6	2437	0.023	-0.093	0.024
11	2462			

802.11g Turbo (6 Mbps)

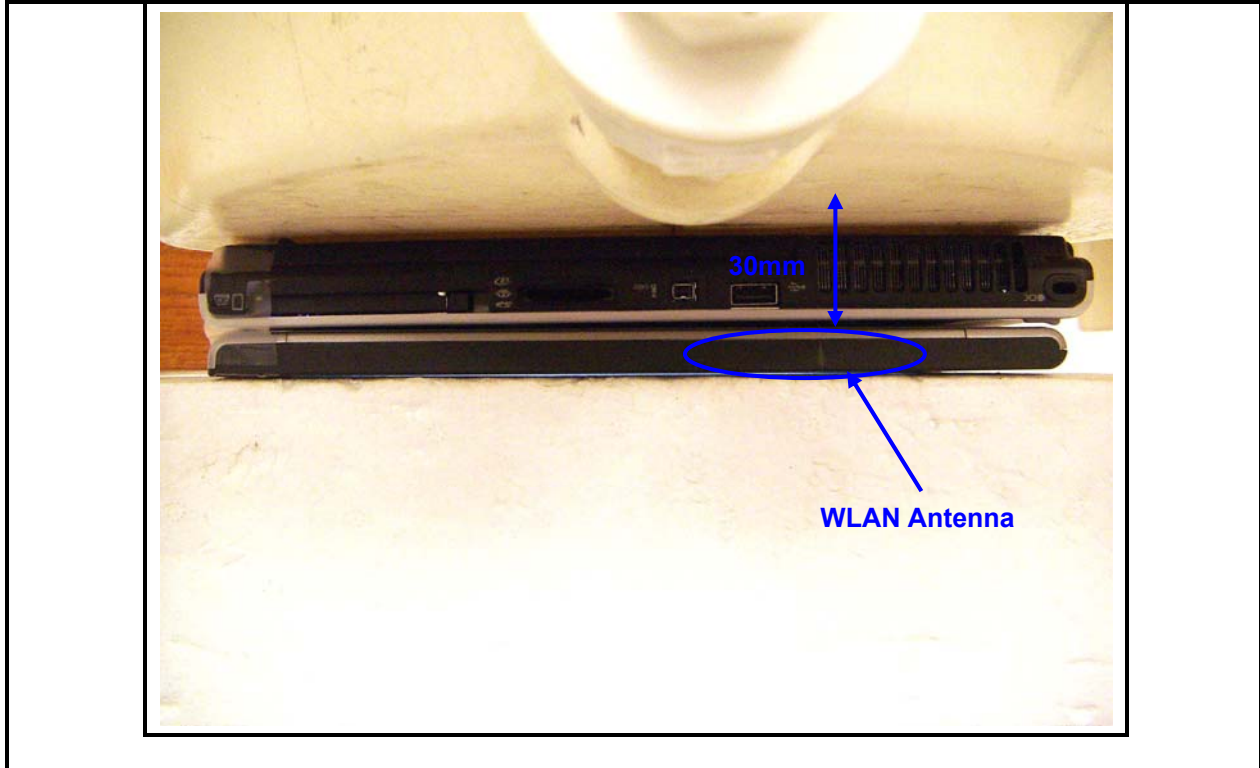
Channel	f (MHz)	Measured SAR 1g (mW/g)	Power Drift (dB)	Extrapolated ¹⁾ SAR 1g (mW/g)
6	2437	0.024	0.000	0.024

Notes:

- 1) The exact method of extrapolation is $\text{Measured SAR} \times 10^{(-\text{drift}/10)}$. The SAR reported at the end of the measurement process by the DASY4 system can be scaled up by the Power drift to determine the SAR at the beginning of the measurement process.
- 2) The SAR measured at the middle channel for this configuration is at least 3 dB lower (0.8 mW/g) than SAR limit (1.6 mW/g), thus testing at low & high channel is optional.
- 3) Please see attachments for the detailed measurement data and plots showing the maximum SAR location of the EUT.
- 4) g mode for this position is skipped since the SAR values are too close to system noise floor.

7.1.4 LAP-HELD POSITION-ANTENNA ANTENNA

Based on the results from Lap-Held Main Antenna, SAR tests for this position are skipped since the SAR values are too low.



Notes:

- 1) The exact method of extrapolation is $\text{Measured SAR} \times 10^{(-\text{drift}/10)}$. The SAR reported at the end of the measurement process by the DASY4 system can be scaled up by the Power drift to determine the SAR at the beginning of the measurement process.
- 2) The SAR measured at the middle channel for this configuration is at least 3 dB lower (0.8 mW/g) than SAR limit (1.6 mW/g), thus testing at low & high channel is optional.
- 3) Please see attachments for the detailed measurement data and plots showing the maximum SAR location of the EUT.