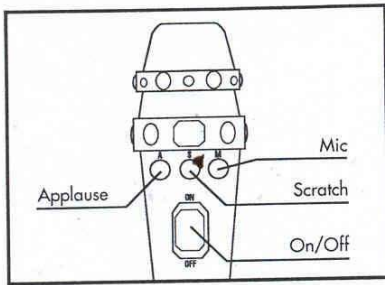


Getting Started

Tune your radio into 92 to 106 FM to hear DJ scratch effect or applause from your fans through the radio speakers! You can also sing into Disney's Hannah Montana FM Wireless Microphone & hear your voice transmitted through the radio speakers.



Instructions

• To Hear Your Voice Through Your Radio Speakers:

1. Turn the ON/OFF switch to ON (the microphone antenna will light up).
2. For best performance, please note the following:
 - a. Place your FM radio in an area of minimal noise & interference.
 - b. Do not set radio volume at maximum.
 - c. Your microphone must be within fifteen feet of the FM radio
 - d. You will only be able to hear your voice & the microphone sound effects through the radio speakers only; they will not be broadcast over the radio.
 - e. In some areas, all frequencies in 92 to 106 FM range could be occupied by a local radio station. In this rare case, your microphone will not be functional.
3. Place Disney's Hannah Montana FM Wireless Microphone close to the radio while tuning the radio into 92 to 106 FM. Tuning into the correct frequency may take practice. You may need to move your radio dial slowly & sing or talk into microphone while doing so until signal is received.
4. Sing into microphone to hear your voice from the radio speakers while pressing and holding button "M".

• To Hear Sound Effects Through Radio Speakers:

DJ Scratch Effect

1. Follow above instructions from #1 - #4
2. Press button "S" on the microphone to hear DJ scratch effect

• To Hear Sound Effects Through Radio Speakers:

Applause

1. Follow above instructions from #1 - #4
2. Press button "A" on the microphone to hear your fans' applause

Turning Microphone Off

1. Turn the ON/OFF switch to OFF when Disney's Hannah Montana Wireless FM Microphone is not in use.

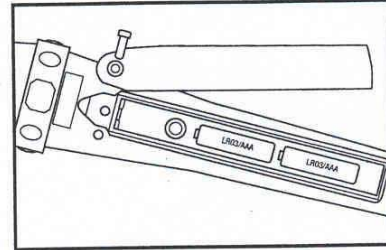
2. Remove batteries if microphone is not being used for several days.

Troubleshooting

1. Replace batteries if the following occurs

- a. LED antenna does not light up
- b. The transmission range (92 - 106 FM) is getting shorter
- c. Product malfunctions due to environment with electrostatic discharge (static electricity).

Battery Replacement



FCC Statement

This device complies with part 15 of the FCC rules.

Operation is subject to the following two conditions:

- (1) This device may not cause harmful interference, and
- (2) this device must accept any interference received, including interference that may cause undesired operation.

Also Look for



Pop Star Electric Guitar

Disney's Hannah Montana's Pop Star Electric Guitar is sold separately.

FCC Part 15 Section 15.21 Information to user

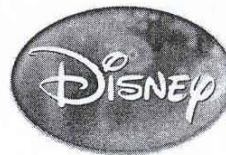
THE MANUFACTURER IS NOT RESPONSIBLE FOR ANY RADIO OR TV INTERFERENCE CAUSED BY UNAUTHORIZED MODIFICATIONS TO THIS EQUIPMENT. SUCH MODIFICATIONS COULD VOID THE USER AUTHORITY TO OPERATE THE EQUIPMENT.

Section 15.105 Information to the user.

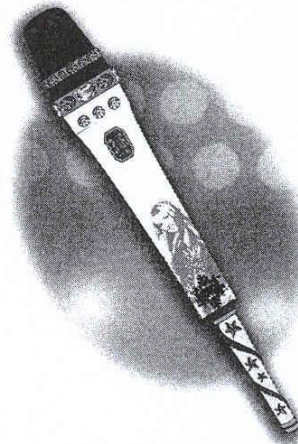
NOTE: This equipment has been tested and found to comply with the limits for a Class B digital device, pursuant to Part 15 of the FCC Rules. These limits are designed to provide reasonable protection against harmful interference in a residential installation. This equipment generates, uses and can radiate radio frequency energy and, if not installed and used in accordance with the instructions, may cause harmful interference to radio communications. However, there is no guarantee that interference will not occur in a particular installation.

If this equipment does cause harmful interference to radio or television reception, which can be determined by turning the equipment off and on, the user is encouraged to try to correct the interference by one or more of the following measures:

- Reorient or relocate the receiving antenna.
- Increase the separation between the equipment and receiver.
- Connect the equipment into an outlet on a circuit different from that to which the receiver is connected.
- Consult the dealer or an experienced radio/TV technician for help.



FM WIRELESS
MICROPHONE



Requires 2 "AAA" batteries (not included)

Battery Warning/Information:

- Non-rechargeable batteries are not to be recharged.
- Do not use rechargeable batteries.
- Batteries are to be inserted with the correct polarity.
- Dead batteries are to be removed from the toy.
- The supply terminals are not to be short-circuited.
- Different types of batteries or new and used batteries are not to be mixed.
- Use LR03/AAA alkaline batteries for the best performance and longer life.
- Only batteries of the same or equivalent types as recommended are to be used.
- Installation of batteries should be done by an adult.

©Disney

DisneyChannel.com

©2007 Creative Designs International, Ltd.,

Treviso, PA 19053.

Printed in China

Questions or comments (Please Call)

1-888-TOYS-CDI

Or Write: Creative Designs International, Ltd.

2540 Metropolitan Drive, Treviso, PA 19053

VISIT US ON THE WEB AT www.cditoys.com



Instruction Manual