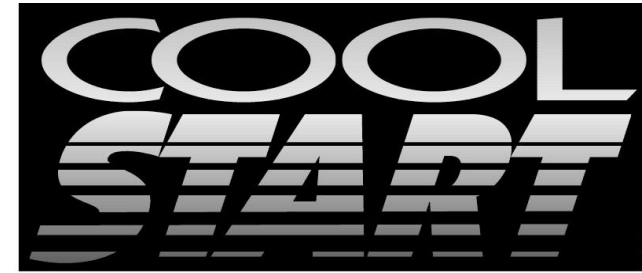


RS2-G3



ONE BUTTON 2-WAY REMOTE START SYSTEM

OPERATING INSTRUCTIONS

CONGRATULATIONS on your choice of a Cool Start™ Remote Engine Starter and Keyless Entry with DP Technology by Crimestopper Security Products Inc. This booklet contains the information necessary for operating your system. If any questions arise, contact your installation dealer or Crimestopper Security Products Inc.

****IMPORTANT INFORMATION: Primary and Optional Features***

-PRIMARY: These are features that must be connected in order for the system to operate properly i.e. Remote Start connections, Flashing lights, and Brake Reset. For programming, the program button must be installed.

-OPTIONAL: These features are to be connected only if desired or agreed upon by the customer and the installing dealer i.e. Door Locks, Horn-Honk, Anti-Grind, etc. These features may also require additional parts and/or labor fees. Consult with your installer beforehand to be sure of what is going to be installed with your particular system.

CRIMESTOPPER SECURITY PRODUCTS, INC.
1770 S. TAPO STREET, SIMI VALLEY, CA. 93063

REV 07.25.2014

This device complies with FCC Rules part 15. Operation is subject to the following two conditions: 1) This device may not cause interference, and (2) this device must accept any interference that may be received, including interference that may cause undesired operation. The manufacturer is not responsible for any radio or TV interference caused by unauthorized modification to this equipment. Such modification could void the user's authority to operate the equipment.

TABLE OF CONTENTS

Operation Cautions & Warnings.....	2
Using the Remote Transmitter.....	3
Status LED.....	4
Remote Engine Control.....	4-6
Timed Self Start Mode (optional).....	7
Turbo Timer Mode.....	8
Convenience and Safety Features.....	9-10
Transmitter Programming.....	11
No Factory Keyless Entry after Remote Start.....	12
Panic Mode.....	12
Remote Start Diagnostics.....	13
Battery Replacement.....	14
2-Way Data Port.....	15

OPERATION CAUTIONS & WARNINGS

CRIMESTOPPER SECURITY PRODUCTS, INC. and its **VENDORS** shall not be liable for any accident resulting from the use of this equipment. This system is designed to be professionally installed into a car or vehicle in which all items, such as parking brake and all associated components, door switches, transmission shift linkage, throttle linkage, and all engine safety features, are in perfect working condition.

IT IS ABSOLUTELY THE OWNER'S SOLE RESPONSIBILITY TO: A) Understand the operation of this system and its safety features. B) Check for proper operation of the system prior to accepting delivery of the vehicle from the installation facility. C) Check and maintain the condition of the vehicle and all items relative to the proper operation of this system and its safety features. D) Always leave the doors and windows closed and locked to protect against accidents and theft.

DO NOT remote start the vehicle in a closed garage. Make sure that the garage door is open or there is adequate ventilation. Failure to observe this rule could result in **injury or death** from poisonous Carbon Monoxide fumes.

USING THE REMOTE TRANSMITTER

1-Way Remote
Blue LED



2-Way Remote
Red & Green LED



BASIC REMOTE OPERATION

The transmitter supplied with this system is a single button 2-Way remote control. This is a multifunction remote control. It can operate power door locks (if equipped with power locks) and Remote Start the vehicle. The 2-Way Remote Control will confirm operation with Beeps and LED flash for lock, unlock and remote start.

1. Press Once = Lock or Unlock.
 - a. Lock = 1 beep & 1 green LED flash.
 - b. Unlock = 2 beeps & 2 green LED flashes.
2. Press 3 times within 2 seconds = Panic Mode – 30 second cycle (2 second beep and green LED).
3. Press and Hold 2 seconds = Remote Start or Remote Stop.
 - a. Remote Start = 1 beep, red & green LED flash once.
 - b. Engine Running = 4 beeps, red & green LED flash 4 times.
 - c. Start Fail = **2 beeps & 2 red flashes.**
 - d. Engine Stop/Shut Down = 1 beep & 1 red LED flash.

STATUS LED

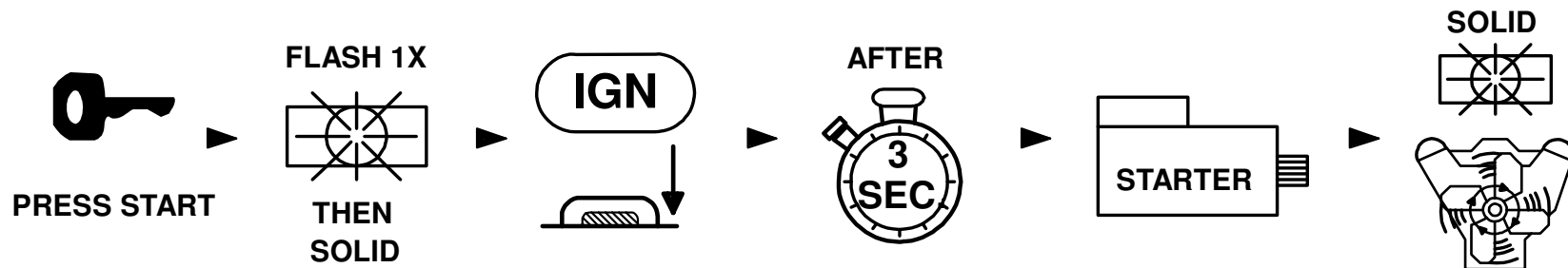
VEHICLE STATUS LED : Located on Window Antenna

The Status led will flash when the doors are locked. It will turn off when the doors are unlocked. The LED will remain solid when the system is in Valet Service mode. The remote start function WILL NOT operate when in Valet Mode.

REMOTE ENGINE CONTROL

REMOTE ENGINE STARTING - SUCCESSFUL START:

- 1) Press the remote start button for at least 2 seconds. Parking lights flash once, return solid, and the Ignition/Acc circuits turn on. The remote control will beep and the LED will flash **once** to confirm.
- 2) After a few seconds the Starter Motor engages. The parking lights and Acc circuits will turn off while cranking.
- 3) Engine Starts and Runs. Parking Lights and Acc turns back on, and the doors lock.
- 4) Engine will remain running for programmed run time until reset with Brake pedal. If needed, the engine can be turned off with remote transmitter by pressing and releasing the Start button.



REMOTE ENGINE CONTROL

REMOTE ENGINE STARTING - UNSUCCESSFUL START

In the event that the engine does not start on the first attempt, the system shuts down for a few seconds and then attempts to restart the engine a 2nd and 3rd time. For hard starting engines, the unit will allow a starter crank time of up to 4 seconds maximum. This should provide ample cranking time for difficult starts, but is limited to 4 seconds to help prevent damage to the starter from over cranking. If Third attempt fails to start engine, the system will turn off and doors will remain locked. *NO FURTHER ATTEMPTS WILL BE MADE AUTOMATICALLY*

TURNING OFF A REMOTE STARTED ENGINE:

- 1) Engine is running in Remote Start (Parking lights ON).
- 2) Press and hold the remote start button for 2 seconds..
- 3) Engine & parking lights OFF, Doors re-lock.

ENTERING YOUR REMOTE STARTED VEHICLE:

- 1) With engine running, unlock system with remote (If equipped) or open door with key.
- 2) Enter vehicle and be careful not to step on brake pedal! (Remote Start Reset)
- 3) Turn Ignition to ON/RUN position, then press brake pedal to reset the Remote Starter & Shift out of park.
- 4) Remote starter will reset instantly when the brake is pressed. Parking lights will turn off and the ignition key is now controlling your vehicle.

IDLE DOWN MODE:

This mode allows the unit to take over operation of the parked vehicle while the ignition key is removed and you exit the vehicle. The vehicle will remain running for the programmed time or until canceled. The Run Time choices are: 10, 20, 30 minutes or Infinity Run. **Default = 20 minutes**

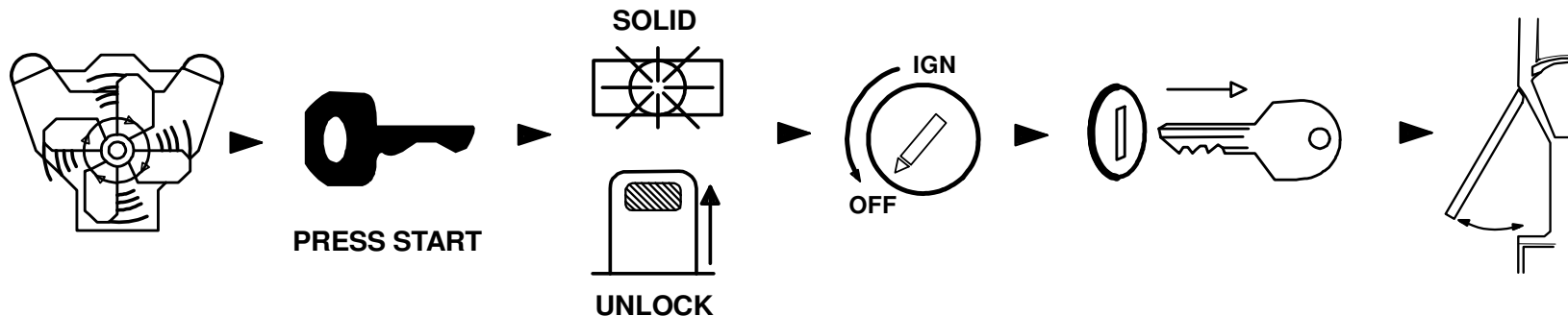
Examples:

- *You pull up to a convenience store for a quick stop, "Idle Down" mode keeps engine running when you exit the vehicle, (with keys in hand). When you return, turn ignition ON, step on brake and drive away.*

REMOTE ENGINE CONTROL

IDLE DOWN MODE - EXITING THE VEHICLE:

- 1) With vehicle engine running with key, press the Remote Start button for 2 seconds.
- 2) Parking Lights will turn ON.
- 3) Doors will unlock, or if brake pedal is being depressed, doors will unlock when it is released.
- 4) Turn OFF Ignition and remove key. Engine should remain running.
- 5) Engine will remain running for programmed run time or until you return (whichever comes first).



IDLE DOWN INFINITY RUN MODE:

Idle Down can be programmed for INFINITY RUN. This allows the vehicle engine to remain running *INDEFINITELY* without the ignition key in the switch. The parking lights continuously flash in this mode. This mode can be beneficial to law enforcement or commercial trucks that need to remain running unattended for long periods of time. Talk to your installer to select option.

OPTIONAL SELF START MODE (OPTION 22)

SELECTABLE HOURLY COLD-START MODE (2, 3 or 4 HOURS) Default = OFF

This mode allows the vehicle to be programmed to self-start every 2, 3 or 4 hours and run for the programmed run time. This can be helpful during extremely cold conditions where engine fluid freeze-up is a concern. This option is disabled by default and must be activated.

TIMED SELF-START MODE:

- 1) The ignition must be off.
- 2) Press Start Button once, then Press and Hold Start Button for 2 seconds (within 3 seconds).
- 3) The 2-Way remote will beep 3 times and the Red & Green LED will flash 3 times to confirm.
- 4) The parking lights will flash 4 times and the horn will chirp for 4 times to confirm Self Start Mode Activated.

RESETTING TIMED SELF-START MODE:

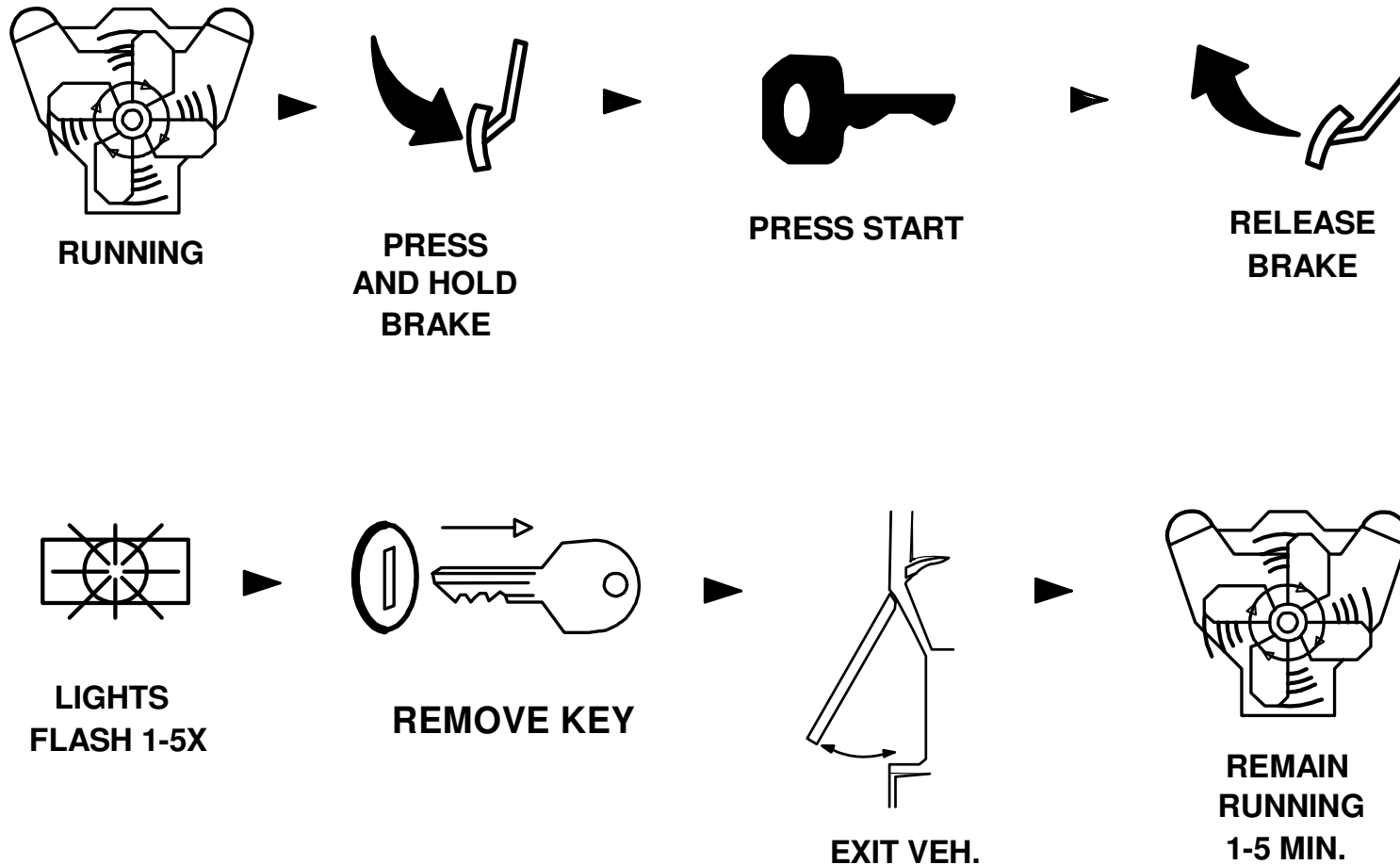
To reset the timed self-start mode, start vehicle using the ignition key or the remote control. The lights will flash 3 times.

TURBO TIMER MODE (OPTION #21)

The optional Turbo Timer mode allows the CoolStart system to keep a Turbo or Turbo Diesel vehicle running for 1, 3 or 5 minutes [selectively] after you remove the key and exit the vehicle. This is handy for turbo cool-down without the need for expensive turbo timers. The **Default = OFF**.

To Activate Turbo mode:

With the engine running by key, **press Remote Start Button and release with brake pedal depressed**. the Parking Lights and Status LED will blink the number of minutes for the Turbo Timer. The doors unlock .



CONVENIENCE AND SAFETY FEATURES

KEYLESS ENTRY (Power Door Locks, may require Data Module - Optional)

The doors will lock or unlock with a momentary press of the Start button.

To confirm lock, the parking lights will flash once, the Status LED (on antenna) will start flashing and the horn will chirp once (selectable option). The remote control will also beep once to confirm lock.

To confirm unlock, the parking lights flash twice, the Status LED turns off and the horn chirps twice (selectable option). The remote control will flash twice to confirm unlock.

AUTO LOCK / UNLOCK (Option # 2) Default = OFF

The Auto Lock feature controls whether the doors will automatically lock/unlock on your vehicle when driving or with turning the Ignition ON/OFF. There are 3 choices:

1. Doors Lock and unlock when ignition is turned on or off.
2. Lock with ignition and brake pedal, unlock with ignition off.
3. Auto Lock only, no unlock.

HORN CHIRPS (Option # 16 & 17)

If vehicle horns are connected to the system, they will provide audible confirmation chirps for remote start. The chirp sound can be programmed from short to long to adjust for different sounding horns. Note: Horn honk/chirp feature may require extra labor and/or parts to install.

Option 16 = Chirps with Remote Start On/Off.

Option 17 = Short, medium or long Chirp Pulse (15, 20 or 30 milliseconds).

ANTI-GRIND (Optional, relay not included)

This Optional feature prevents the user from accidentally grinding the starter if the Ignition key is turned too far to the start position while engine is already running from the remote starter. The Anti-Grind requires the use of an external relay.

CONVENIENCE AND SAFETY FEATURES

VALET MODE (Requires Installation of Valet Switch)

Before servicing your vehicle or handing the keys over to a Valet we recommend putting the unit into Valet Mode. The remote start function WILL NOT operate when in Valet Mode. To enter Valet mode, turn the key to the ON position, press and hold Program/Valet switch for 5-6 seconds. The Status LED will turn on solid when the system is in Valet Mode. To exit Valet Mode, perform this procedure again.

HOOD OPEN SAFETY (Requires hood pin switch)

Prevents the engine from being Remote Started with the hood is open. This eliminates risk of injury to someone working under the hood of the vehicle. If Remote Start button is pressed with the hood open, the lights will flash twice and the unit will not attempt a start. The system will abort Remote Start any time the hood is opened. See Remote Start Diagnostics on page 13.

BRAKE PEDAL RESET:

Prevents starting or shuts off a remote started vehicle when this circuit is active. This prevents unauthorized driving of a remote started vehicle. This circuit shuts the system down immediately when brake pedal is pressed. Turn the ignition key to the “ON” position before the brake pedal is pressed.

OEM ALARM INTERFACE (May require optional Databus Module)

This feature is designed to Disarm and Re-arm Factory equipped security systems in conjunction with remote start and keyless entry (if needed for your vehicle). This feature will maintain the original integrity and security of your vehicle’s factory equipped systems before, during, or after remote start. Some vehicles require an optional Databus module to operate a factory alarm or keyless entry.

LOCK with REMOTE START and After REMOTE START ABORT:

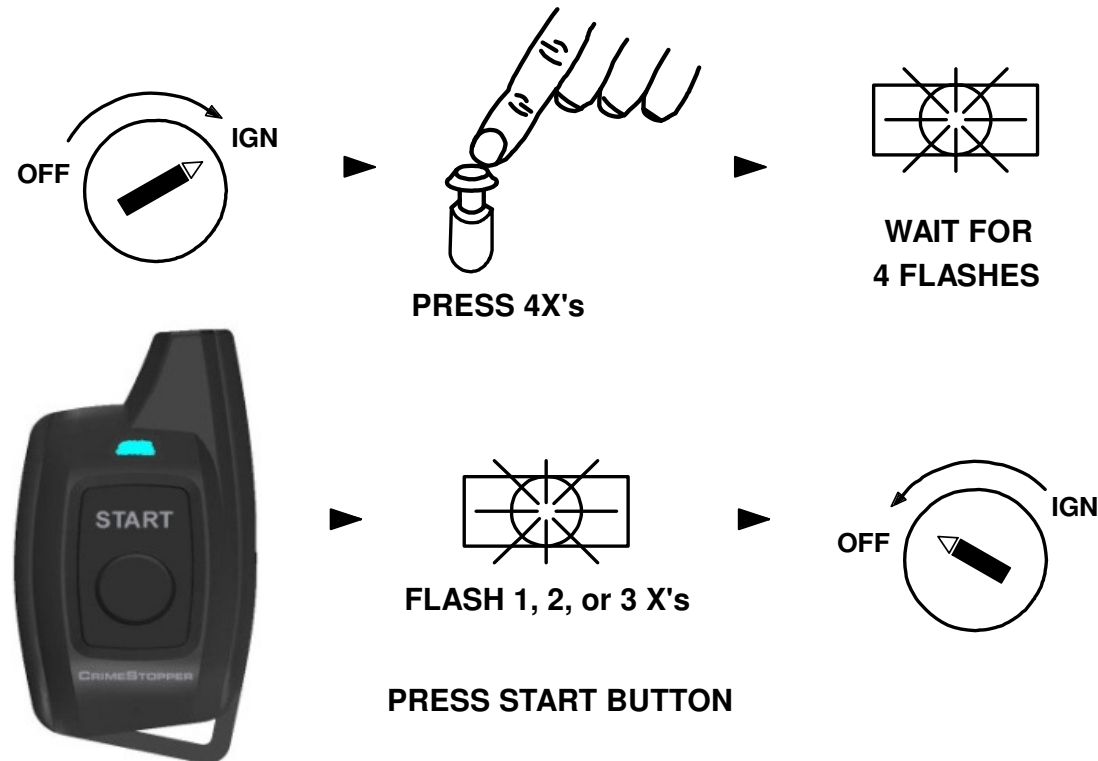
Option # 8 controls whether the system will automatically lock during and after a remote Start abort or time-out. There are 4 choices for this option:

1. **Lock with Remote Start Only - Default.**
2. OFF.
3. Lock with Remote Start and Lock with Remote Start Abort.
4. Lock with Remote Start Abort only.

TRANSMITTER PROGRAMMING

Note: All transmitter codes must be learned at time of programming!! The system learns up to 3 different transmitter codes.

1. Turn Ignition Key to the ON position.
2. Press Programming button 4 times, then after a few seconds the unit flashes the parking lights 4 times.
3. Press the start button of the first transmitter. You should get 1 light flash confirming the remote is coded, then press the start button of a second transmitter, the unit will flash 2 times confirming the remote is coded and so on. If all 3 codes are learned, the unit will automatically exit code learning mode, otherwise turn key off. See diagram below.



NO FACTORY KEYLESS ENTRY AFTER REMOTE START

Most new cars Do Not allow the factory Remote Keyless Entry to function with the Ignition ON. This means you can't use the factory remote to lock or unlock the doors. After remote start you have to use the keys to

unlock the door. Also, many new vehicles unlock the doors when disarming the factory alarm. This leaves the doors unlocked while Remote Started. To resolve this problem, have your installer connect the door locks to the Remote Start Keyless Entry. The Remote Starter will Re-Lock the doors after remote starting.

POWER ON MEMORY

This system is equipped with circuitry that will allow the system to remember its status if the power is lost and then reconnected.

PANIC MODE

This mode is used in an emergency situation or you are having trouble finding your vehicle in a parking lot. The vehicle horns must be connected for this option.

To Activate: Press the start button 3 times within 2 seconds. The horns start honking and parking lights flash for 30 seconds.

To Deactivate: Press the start button again to stop the horns and Lights.

REMOTE START DIAGNOSTICS

If the system flashes the LED and Parking Lights one to six times and doesn't attempt remote. The LED will continue flashing the error code until the ignition is turned on, it means the following:

- 1 Parking Light Flash (1 LED Flash) = Problem with Brake Switch.
- 2 Parking Light Flashes (2 LED Flashes) = Problem with Hood Switch.
- 3 Parking Light Flashes (3 LED Flashes) = Tach Problem.
- 4 Parking Light Flashes (4 LED Flashes) = Voltage Sense Problem, battery not charging or too low.
- 5 Parking Light Flashes (5 LED Flashes) = Problem with (-) Brake Input.
- 6 Parking Light Flashes (Solid LED) = Valet Service Mode.

Be sure to tell your installer the Diagnostic code when taking vehicle in for service

SYSTEM IS UNSUCCESSFUL AT REMOTE START DURING EXTREME COLD CONDITIONS:

Please be aware that during sub-freezing conditions your remote starter may take more than one attempt to start or it may not successfully start the vehicle after 3 attempts. During these conditions the vehicle may not properly start even using the key; therefore trying to start by the remote would also be unsuccessful.

BATTERY REPLACEMENT

To replace the battery: Simply take the case apart as shown below. Remove the two CR-2016 Lithium batteries and replace. Put case back together and tighten screw.

The 1-Way remote needs two CR-2016 Lithium batteries.
The 2-Way remote needs one CR-2032 Lithium battery.

The 1-Way remote has a low battery indication; The Blue LED will flash once every 5 seconds
The 2-Way remote has a low battery indication; The Red LED will flash once every 5 seconds



2-Way DATA PORT

Some vehicles require a Databus Module to Bypass the factory Immobilizer and operate the keyless entry.

Databus modules are used to communicate with the vehicles computer at the OBD2 Data connector or Canbus wires. This reduces installation error. Crimestopper Systems with DP Series have a direct Data Port Plug-In for the Databus bypass module. This eliminates conventional wiring between the Alarm/Remote Starter and the bypass interface module.

Features Include:

- Transponder Immobilizer.
- PassLock Immobilizer.
- O.E.M. Alarm Control.
- R.A.P. Shutdown.
- Power Door Locks.
- Priority Unlock.
- Trunk Release.
- Parking Lights.
- Courtesy Lights.
- Tachometer.
- Heated Seats.
- Rear Defrost.
- Driver 1 and 2 Memory presets.

The actual features controlled depend on the vehicle and Databus module.

changes or modifications not expressly approved by the party responsible for compliance could void the user's authority to operate the equipment.

This equipment has been tested and found to comply with the limits for a Class B digital device, pursuant to Part 15 of the FCC Rules. These limits are designed to provide reasonable protection against harmful interference in a residential installation. This equipment generates, uses and can radiate radio frequency energy and, if not installed and used in accordance with the instructions, may cause harmful interference to radio communications. However, there is no guarantee that interference will not occur in a particular installation.

If this equipment does cause harmful interference to radio or television reception, which can be determined by turning the equipment off and on, the user is encouraged to try to correct the interference by one or more of the following measures:

- Reorient or relocate the receiving antenna.
- Increase the separation between the equipment and receiver.
- Connect the equipment into an outlet on a circuit different from that to which the receiver is connected.
- Consult the dealer or an experienced radio/TV technician for help.

CRIMESTOPPER



www.crimestopper.com
email@crimestopper.com
Phone (800) 998-6880
FAX (805) 581-9500

© 2014 Crimestopper Security Products



ONLINE TECHNICAL SUPPORT
www.crimestopper.com