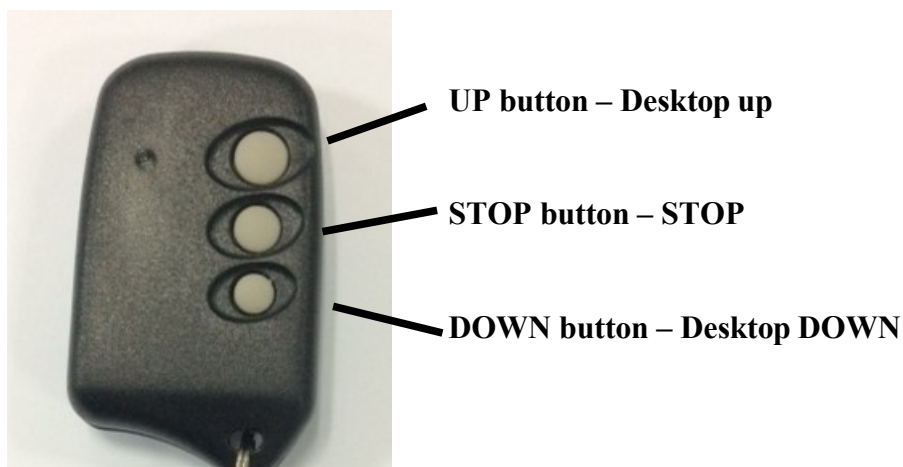


INSTRUCTIONS FOR OPERATION

SETTING THE OPERATING CONTROLS

1. This unit operates on a 12 volts battery *1 (not included).
To prevent possible damage if the battery should leak , be sure to remove the battery when the unit is not use .
2. Store the controller away from excess heat or humidity .
3. This remote control unit is required with 20bit code combinations. To prevent possible interference from or to other remote units such as garage door openers, car alarm or security system .
4. Operation buttons on the panel of transmitter .



GENERAL INFORMATION :

This REMOTE controller can be remote controlled table goes up or stop or down

Instructions for installing and controller actions

1. Setting the code on your new transmitter .

Within 60 seconds of turning the AC power on, press and hold the STOP button for 5 seconds. The receiver will then lock in the chosen frequency. check operation using the transmitter

NOTICE :

The changes or modifications not expressly approved by the party responsible for compliance could void user's authority to operate the equipment .

This device complies with Part 15 of the FCC Rules. Operation is subject to the following two conditions: (1) this device may not cause harmful interference, and (2) this device must accept any interference received, including interference that may cause