

FCC ID : CGJWT02
Model : WT-2A
Applicant : Nikon Corporation

Date: December 28, 2004

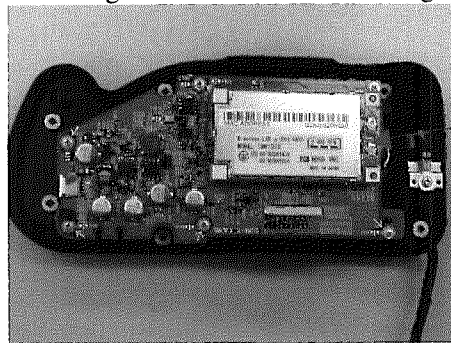
Request for Limited Modular Approval

The modular transmitter (Model: WT-2A) is designed by Nikon Corporation.
This modular transmitter will be equipped and used only in Digital Camera (model: D2H), which is produced by Nikon Corporation or the manufacturer consigned the production by Nikon Corporation.

The modular transmitter complies the module basic requirement (Item 1 to 8) in FCC Public Notice: Part 15 Unlicensed Modular Transmitter Approval (DA00-1407) as indicated below.

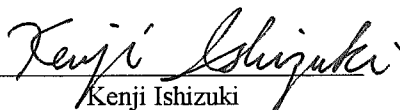
[Module basic requirement]

- (1) Have its own RF shielding:
This modular transmitter has its own RF shielding. Please refer to the following Photo;



RF shielding

- (2) The modular transmitter must have buffered modulation/data inputs:
Data input to this modular transmitter is controlled as not generating excessive data speed and abnormal modulation.
- (3) The modular transmitter must have its own power supply regulation:
The modular transmitter does not have its own power supply, but regulated power of 3.3V is supplied from Digital Camera (model: D2H).
- (4) The modular transmitter must comply with the antenna requirements of Section 15.203 and 15.204(c):
There are two type of antenna (Monopole Type (Normal antenna Model: WA-S1) and Co-linear Type (Option antenna: Model: WA-E1)). Reverse SMA connector is connected to the both antennas. In addition, the modular transmitter is installed in the end product by the professional. Neither antenna nor cable is to be exchanged with any other replacement. Neither does the length of cable change.
- (5) The modular transmitter must be tested in a stand alone:
The modular transmitter has not been tested in a stand alone. The test has been performed with Digital Camera (model: D2H) because this transmitter is equipped on the dedicated Digital Camera (model D2H).
- (6) The modular transmitter must be labeled with its own FCC/IC ID numbers, and, if the FCC/IC IDs are not visible when the module is installed inside another device, then the outside of the device into which the module is installed must also display a label referring to the enclosed module:
This modular transmitter is complied with this requirement. Please refer to the Label drawing and location. In addition, the final product will display FCC/IC IDs of the module.
- (7) The modular transmitter must comply with any specific rule or operating requirements applicable to the transmitter and the manufacturer must provide adequate instructions along with the module to explain any such requirements:
The necessary explanation to be complied with this requirement is contained in the manual.
- (8) The modular transmitter must comply with any applicable RF exposure requirements:
Please refer to SAR Test Report, No.25BE0174-HO-1.


Kenji Ishizuki

Junior Executive Staff

Environment and Safety Management Team