

---

## COOLPIX P2-11g-Head-54Mbps-Low ch (2412MHz)- Top

Crest factor: 1

Medium parameters used:  $f = 2450$  MHz;  $\sigma = 1.85$  mho/m;  $\epsilon_r = 37.7$ ;  $\rho = 1000$  kg/m<sup>3</sup>

Phantom section: Flat Section

Measurement Standard: DASYS4 (High Precision Assessment)

DASY4 Configuration:

Probe: ET3DV6 - SN1684; ConvF(4.39, 4.39, 4.39); Calibrated: 2004/09/02

Sensor-Surface: 4mm (Mechanical And Optical Surface Detection)

Electronics: DAE3 Sn516; Calibrated: 2005/03/10

Phantom: SAM 1196

Measurement SW: DASYS4, V4.5 Build 19; Postprocessing SW: SEMCAD, V1.8 Build 145

**Area Scan (61x81x1):** Measurement grid: dx=20mm, dy=20mm

Maximum value of SAR (interpolated) = 0.079 mW/g

**Zoom Scan (5x5x7)/Cube 0:** Measurement grid: dx=8mm, dy=8mm, dz=5mm

Reference Value = 6.09 V/m; Power Drift = -0.254 dB

Peak SAR (extrapolated) = 0.320 W/kg

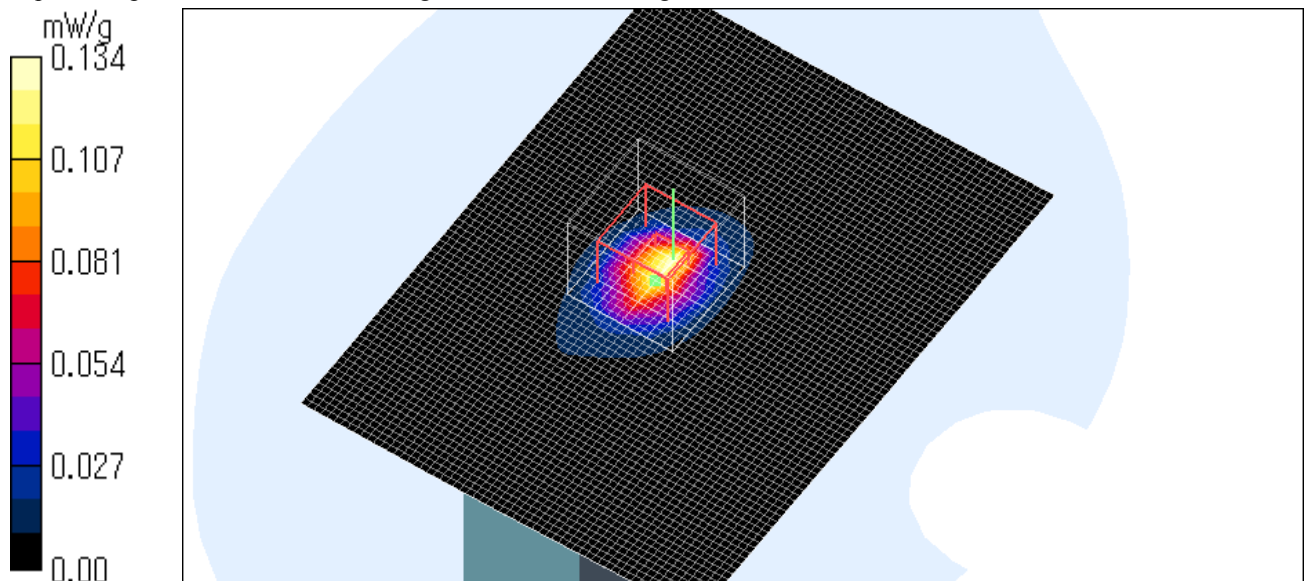
**SAR(1 g) = 0.115 mW/g; SAR(10 g) = 0.043 mW/g**

Maximum value of SAR (measured) = 0.134 mW/g

Test Date = 05/30/05

Ambient Temperature = 25.0 degree.C.

Liquid Temperature = Before 24.5 degree.C. , After 24.5 degree.C.



---

**UL Apex Co., Ltd.**

**Head Office EMC Lab.**

4383-326 Asama-cho, Ise-shi, Mie-ken 516-0021 JAPAN

Telephone: +81 596 24 8116

Facsimile: +81 596 24 8124

---

## COOLPIX P2-11g-Head-54Mbps-High ch (2462MHz)- Top

Crest factor: 1

Medium parameters used:  $f = 2450$  MHz;  $\sigma = 1.85$  mho/m;  $\epsilon_r = 37.7$ ;  $\rho = 1000$  kg/m<sup>3</sup>

Phantom section: Flat Section

Measurement Standard: DASYS4 (High Precision Assessment)

DASY4 Configuration:

Probe: ET3DV6 - SN1684; ConvF(4.39, 4.39, 4.39); Calibrated: 2004/09/02

Sensor-Surface: 4mm (Mechanical And Optical Surface Detection)

Electronics: DAE3 Sn516; Calibrated: 2005/03/10

Phantom: SAM 1196

Measurement SW: DASYS4, V4.5 Build 19; Postprocessing SW: SEMCAD, V1.8 Build 145

**Area Scan (61x81x1):** Measurement grid: dx=20mm, dy=20mm

Maximum value of SAR (interpolated) = 0.152 mW/g

**Zoom Scan (5x5x7)/Cube 0:** Measurement grid: dx=8mm, dy=8mm, dz=5mm

Reference Value = 6.68 V/m; Power Drift = -0.242 dB

Peak SAR (extrapolated) = 0.430 W/kg

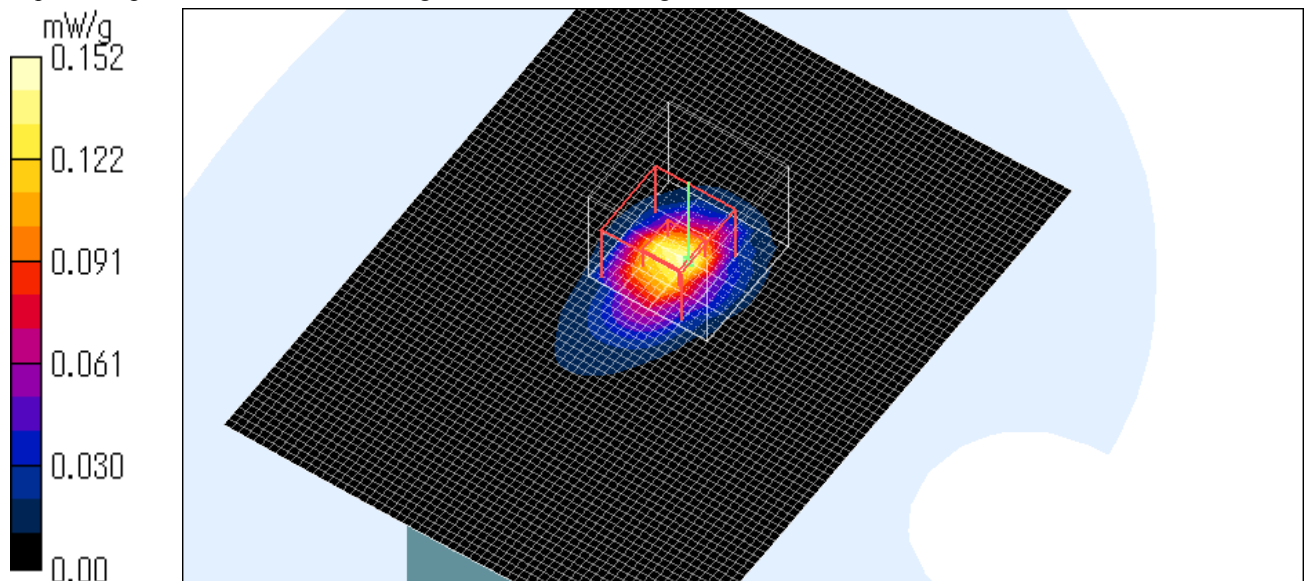
**SAR(1 g) = 0.143 mW/g; SAR(10 g) = 0.052 mW/g**

Maximum value of SAR (measured) = 0.152 mW/g

Test Date = 05/30/05

Ambient Temperature = 25.0 degree.C.

Liquid Temperature = Before 24.5 degree.C. , After 24.5 degree.C.



---

**UL Apex Co., Ltd.**

**Head Office EMC Lab.**

4383-326 Asama-cho, Ise-shi, Mie-ken 516-0021 JAPAN

Telephone: +81 596 24 8116

Facsimile: +81 596 24 8124

---

## COOLPIX P2-11g-Head-54Mbps-Mid ch (2437MHz)- Top - 5mm

Crest factor: 1

Medium parameters used:  $f = 2450$  MHz;  $\sigma = 1.85$  mho/m;  $\epsilon_r = 37.7$ ;  $\rho = 1000$  kg/m<sup>3</sup>

Phantom section: Flat Section

Measurement Standard: DASYS4 (High Precision Assessment)

DASY4 Configuration:

Probe: ET3DV6 - SN1684; ConvF(4.39, 4.39, 4.39); Calibrated: 2004/09/02

Sensor-Surface: 4mm (Mechanical And Optical Surface Detection)

Electronics: DAE3 Sn516; Calibrated: 2005/03/10

Phantom: SAM 1196

Measurement SW: DASYS4, V4.5 Build 19; Postprocessing SW: SEMCAD, V1.8 Build 145

**Area Scan (61x81x1):** Measurement grid: dx=20mm, dy=20mm

Maximum value of SAR (interpolated) = 0.072 mW/g

**Zoom Scan (5x5x7)/Cube 0:** Measurement grid: dx=8mm, dy=8mm, dz=5mm

Reference Value = 6.07 V/m; Power Drift = -0.286 dB

Peak SAR (extrapolated) = 0.164 W/kg

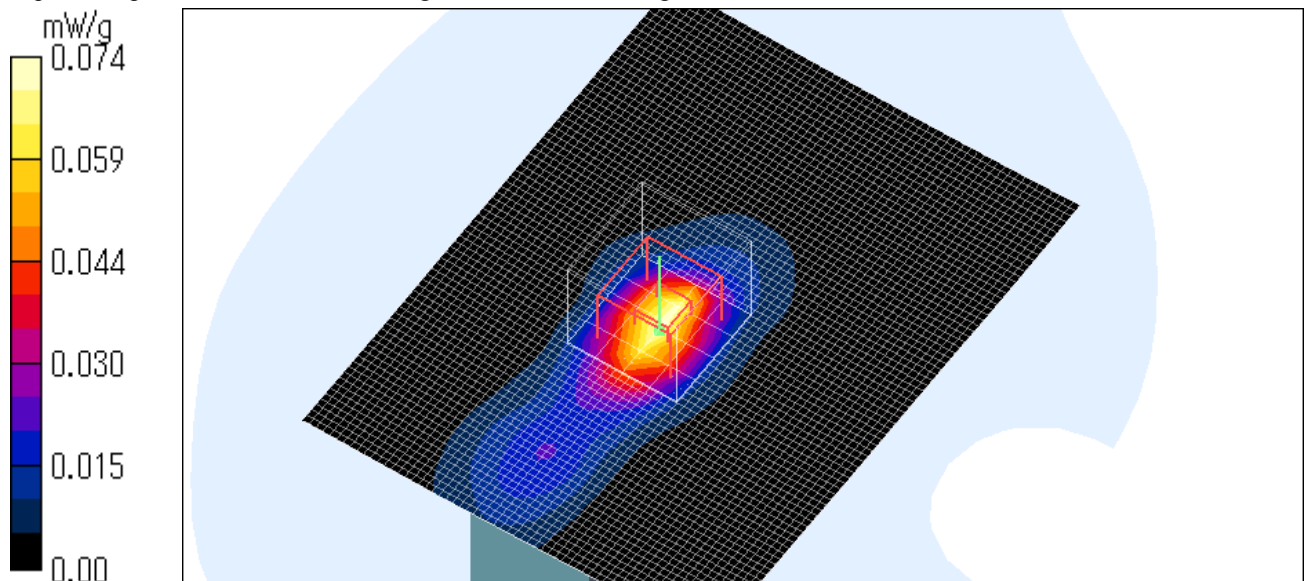
**SAR(1 g) = 0.067 mW/g; SAR(10 g) = 0.030 mW/g**

Maximum value of SAR (measured) = 0.074 mW/g

Test Date = 05/30/05

Ambient Temperature = 25.0 degree.C.

Liquid Temperature = Before 24.5 degree.C. , After 24.5 degree.C.



---

**UL Apex Co., Ltd.**

**Head Office EMC Lab.**

4383-326 Asama-cho, Ise-shi, Mie-ken 516-0021 JAPAN

Telephone: +81 596 24 8116

Facsimile: +81 596 24 8124

---

## COOLPIX P2-11g-Head-54Mbps-Mid ch (2437MHz)- Top - 10mm

Crest factor: 1

Medium parameters used:  $f = 2450$  MHz;  $\sigma = 1.85$  mho/m;  $\epsilon_r = 37.7$ ;  $\rho = 1000$  kg/m<sup>3</sup>

Phantom section: Flat Section

Measurement Standard: DASYS4 (High Precision Assessment)

DASY4 Configuration:

Probe: ET3DV6 - SN1684; ConvF(4.39, 4.39, 4.39); Calibrated: 2004/09/02

Sensor-Surface: 4mm (Mechanical And Optical Surface Detection)

Electronics: DAE3 Sn516; Calibrated: 2005/03/10

Phantom: SAM 1196

Measurement SW: DASYS4, V4.5 Build 19; Postprocessing SW: SEMCAD, V1.8 Build 145

**Area Scan (61x81x1):** Measurement grid: dx=20mm, dy=20mm

Maximum value of SAR (interpolated) = 0.030 mW/g

**Zoom Scan (5x5x7)/Cube 0:** Measurement grid: dx=8mm, dy=8mm, dz=5mm

Reference Value = 2.90 V/m; Power Drift = -0.267 dB

Peak SAR (extrapolated) = 0.049 W/kg

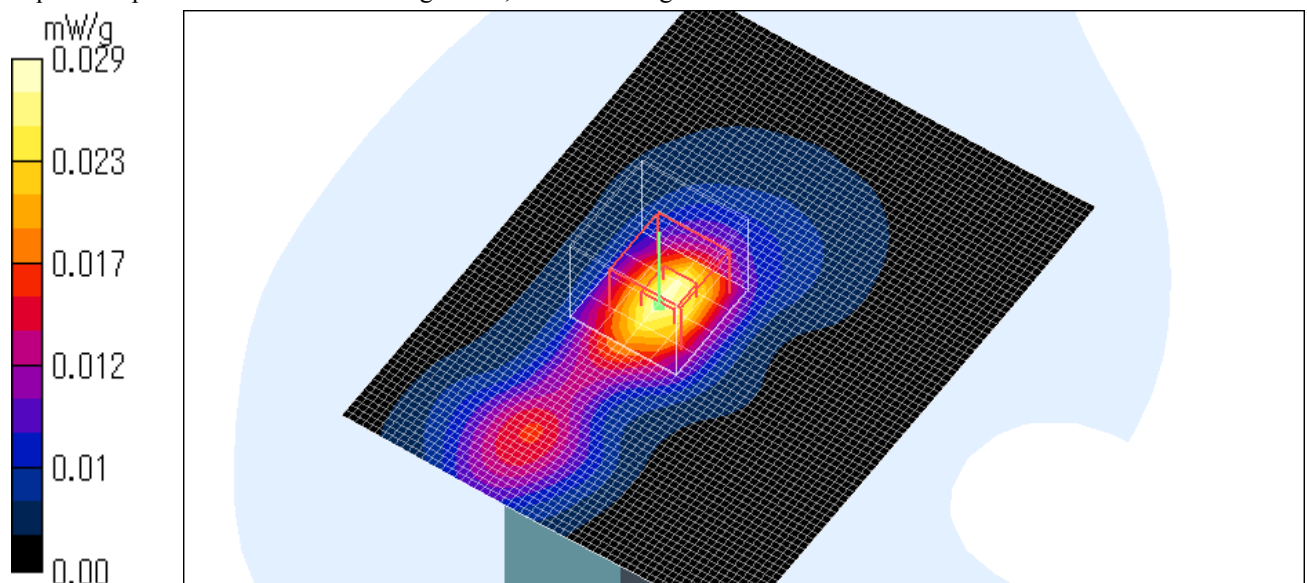
**SAR(1 g) = 0.026 mW/g; SAR(10 g) = 0.013 mW/g**

Maximum value of SAR (measured) = 0.029 mW/g

Test Date = 05/30/05

Ambient Temperature = 25.0 degree.C.

Liquid Temperature = Before 24.5 degree.C. , After 24.5 degree.C.



---

**UL Apex Co., Ltd.**

**Head Office EMC Lab.**

4383-326 Asama-cho, Ise-shi, Mie-ken 516-0021 JAPAN

Telephone: +81 596 24 8116

Facsimile: +81 596 24 8124



---

## COOLPIX P2-11g-Head-54Mbps-Mid ch (2437MHz)- Top - 15mm

Crest factor: 1

Medium parameters used:  $f = 2450$  MHz;  $\sigma = 1.85$  mho/m;  $\epsilon_r = 37.7$ ;  $\rho = 1000$  kg/m<sup>3</sup>

Phantom section: Flat Section

Measurement Standard: DASYS4 (High Precision Assessment)

DASY4 Configuration:

Probe: ET3DV6 - SN1684; ConvF(4.39, 4.39, 4.39); Calibrated: 2004/09/02

Sensor-Surface: 4mm (Mechanical And Optical Surface Detection)

Electronics: DAE3 Sn516; Calibrated: 2005/03/10

Phantom: SAM 1196

Measurement SW: DASYS4, V4.5 Build 19; Postprocessing SW: SEMCAD, V1.8 Build 145

**Area Scan (61x81x1):** Measurement grid: dx=20mm, dy=20mm

Maximum value of SAR (interpolated) = 0.016 mW/g

**Zoom Scan (5x5x7)/Cube 0:** Measurement grid: dx=8mm, dy=8mm, dz=5mm

Reference Value = 2.89 V/m; Power Drift = -0.276 dB

Peak SAR (extrapolated) = 0.031 W/kg

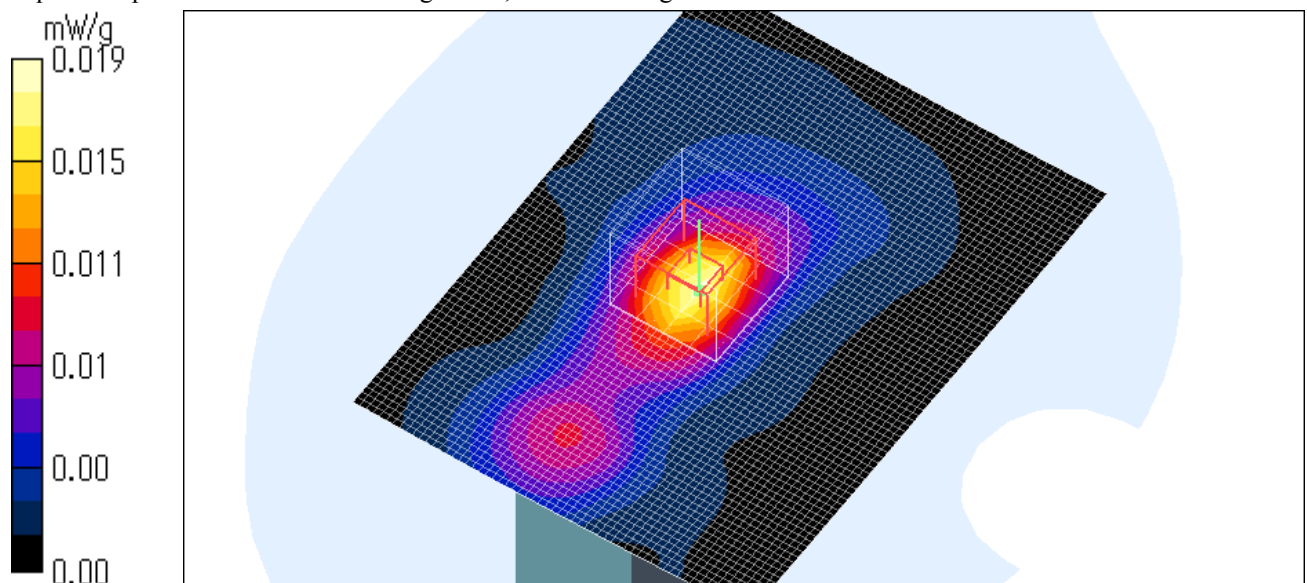
**SAR(1 g) = 0.016 mW/g; SAR(10 g) = 0.00844 mW/g**

Maximum value of SAR (measured) = 0.019 mW/g

Test Date = 05/30/05

Ambient Temperature = 25.0 degree.C.

Liquid Temperature = Before 24.6 degree.C. , After 24.4 degree.C.



---

**UL Apex Co., Ltd.**

**Head Office EMC Lab.**

4383-326 Asama-cho, Ise-shi, Mie-ken 516-0021 JAPAN

Telephone: +81 596 24 8116

Facsimile: +81 596 24 8124

Test report No. : 25EE0208-HO-3B  
Page : 95 of 119  
Issued date : June 17, 2005  
Revised date : June 29, 2005  
FCC ID : CGJCXPI

---

**APPENDIX 4 : Validation Measurement data**

---

**UL Apex Co., Ltd.**

**Head Office EMC Lab.**

4383-326 Asama-cho, Ise-shi, Mie-ken 516-0021 JAPAN

Telephone: +81 596 24 8116

Facsimile: +81 596 24 8124

---

**System Validation / Dipole 2450MHz / Forward Conducted Power : 250mW / Date : May 25**

Dipole 2450 MHz; Type: D2450V2; Serial: SN:713  
Communication System: CW; Frequency: 2450 MHz; Crest factor: 1

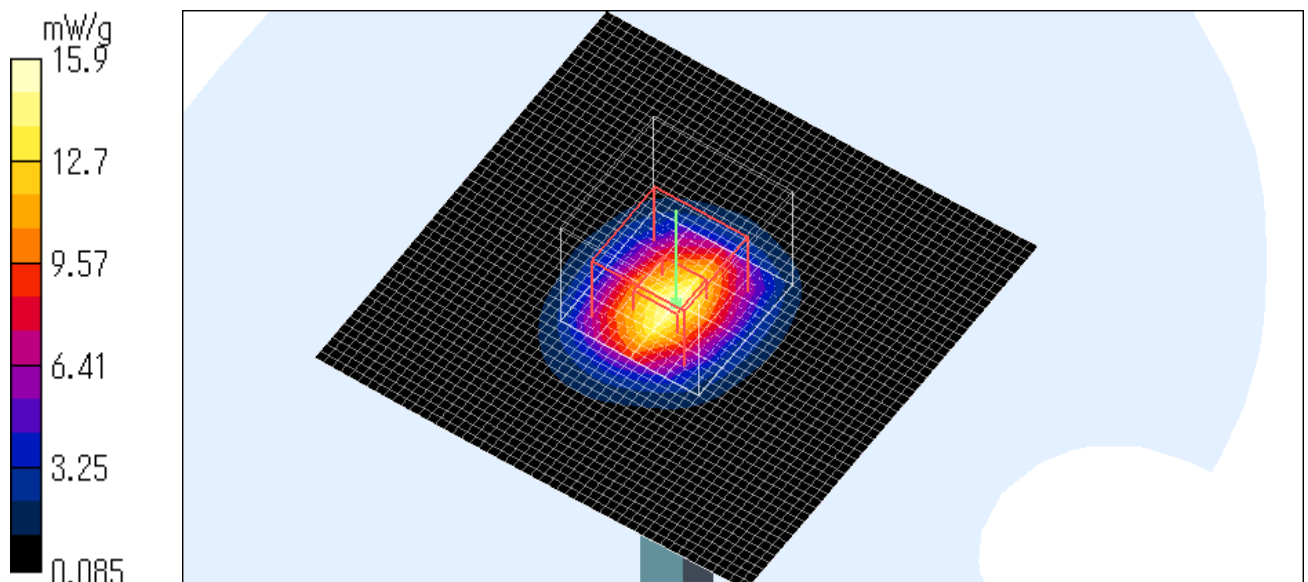
Medium parameters used:  $f = 2450$  MHz;  $\sigma = 1.85$  mho/m;  $\epsilon_r = 37.8$ ;  $\rho = 1000$  kg/m<sup>3</sup>  
Phantom section: Flat Section  
Measurement Standard: DASY4 (High Precision Assessment)  
DASY4 Configuration:  
Probe: ET3DV6 - SN1684; ConvF(4.39, 4.39, 4.39); Calibrated: 2004/09/02  
Sensor-Surface: 4mm (Mechanical And Optical Surface Detection)  
Electronics: DAE3 Sn516; Calibrated: 2005/03/10  
Phantom: SAM 1196  
Measurement SW: DASY4, V4.5 Build 19; Postprocessing SW: SEMCAD, V1.8 Build 145

**Area Scan (51x51x1):** Measurement grid: dx=20mm, dy=20mm  
Maximum value of SAR (interpolated) = 21.9 mW/g

**Zoom Scan (5x5x7)/Cube 0:** Measurement grid: dx=8mm, dy=8mm, dz=5mm  
Reference Value = 98.7 V/m; Power Drift = 0.017 dB  
Peak SAR (extrapolated) = 28.5 W/kg

**SAR(1 g) = 14 mW/g; SAR(10 g) = 6.5 mW/g**  
Maximum value of SAR (measured) = 15.9 mW/g

Test Date = 05/25/05  
Ambient Temperature = 25.0 degree.C.  
Liquid Temperature = Before 24.5 degree.C. , After 24.5 degree.C.



---

**UL Apex Co., Ltd.**

**Head Office EMC Lab.**

4383-326 Asama-cho, Ise-shi, Mie-ken 516-0021 JAPAN  
Telephone: +81 596 24 8116  
Facsimile: +81 596 24 8124

---

**System Validation / Dipole 2450MHz / Forward Conducted Power : 250mW / Date : May 26**

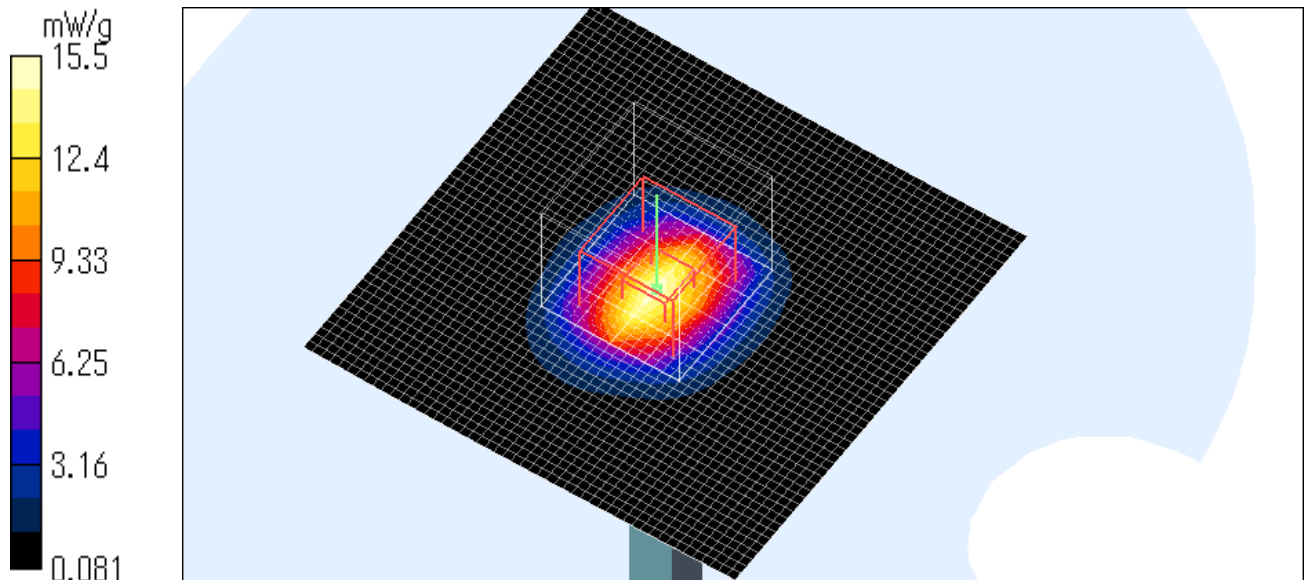
Dipole 2450 MHz; Type: D2450V2; Serial: SN:713  
Communication System: CW; Frequency: 2450 MHz; Crest factor: 1  
Medium parameters used:  $f = 2450$  MHz;  $\sigma = 1.8$  mho/m;  $\epsilon_r = 37.9$ ;  $\rho = 1000$  kg/m<sup>3</sup>  
Phantom section: Flat Section  
Measurement Standard: DASYS4 (High Precision Assessment)  
DASY4 Configuration:  
Probe: ET3DV6 - SN1684; ConvF(4.39, 4.39, 4.39); Calibrated: 2004/09/02  
Sensor-Surface: 4mm (Mechanical And Optical Surface Detection)  
Electronics: DAE3 Sn516; Calibrated: 2005/03/10  
Phantom: SAM 1196  
Measurement SW: DASYS4, V4.5 Build 19; Postprocessing SW: SEMCAD, V1.8 Build 145

**Area Scan (51x51x1):** Measurement grid: dx=20mm, dy=20mm  
Maximum value of SAR (interpolated) = 22.4 mW/g

**Zoom Scan (5x5x7)/Cube 0:** Measurement grid: dx=8mm, dy=8mm, dz=5mm  
Reference Value = 99.1 V/m; Power Drift = 0.00 dB  
Peak SAR (extrapolated) = 28.2 W/kg

**SAR(1 g) = 13.9 mW/g; SAR(10 g) = 6.54 mW/g**  
Maximum value of SAR (measured) = 15.5 mW/g

Test Date = 05/26/05  
Ambient Temperature = 25.0 degree.C.  
Liquid Temperature = Before 25.0 degree.C. , After 24.9 degree.C.



---

**UL Apex Co., Ltd.**

**Head Office EMC Lab.**

4383-326 Asama-cho, Ise-shi, Mie-ken 516-0021 JAPAN  
Telephone: +81 596 24 8116  
Facsimile: +81 596 24 8124



---

**System Validation / Dipole 2450MHz / Forward Conducted Power : 250mW / Date : May 30**

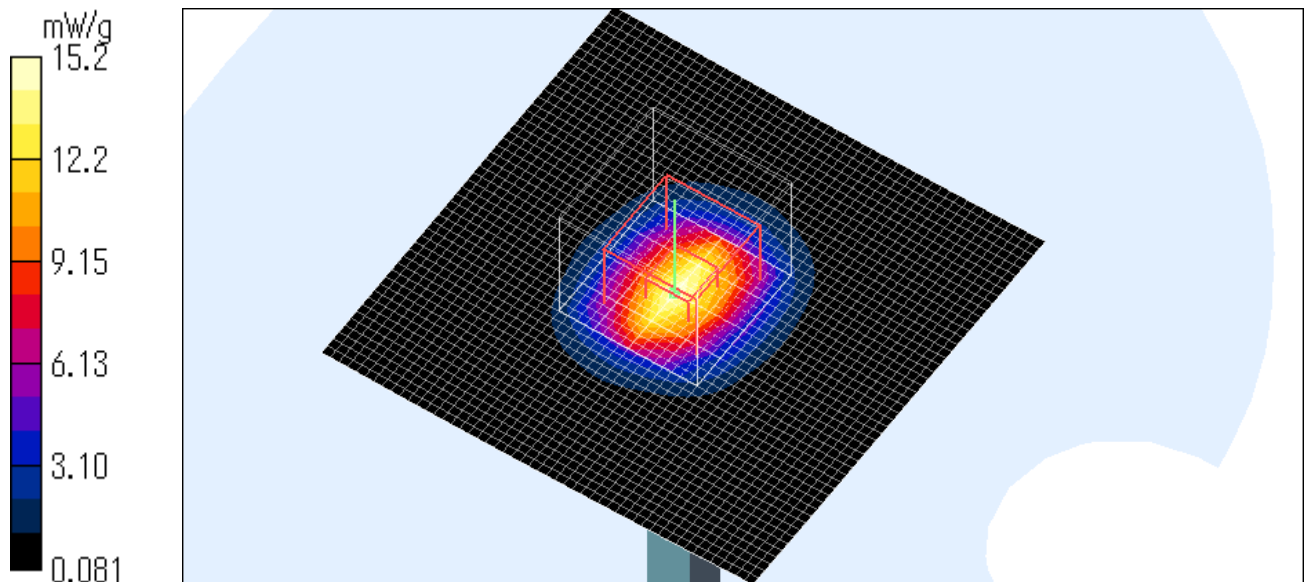
Dipole 2450 MHz; Type: D2450V2; Serial: SN:713  
Communication System: CW; Frequency: 2450 MHz; Crest factor: 1  
Medium parameters used:  $f = 2450$  MHz;  $\sigma = 1.85$  mho/m;  $\epsilon_r = 37.7$ ;  $\rho = 1000$  kg/m<sup>3</sup>  
Phantom section: Flat Section  
Measurement Standard: DASYS4 (High Precision Assessment)  
DASY4 Configuration:  
Probe: ET3DV6 - SN1684; ConvF(4.39, 4.39, 4.39); Calibrated: 2004/09/02  
Sensor-Surface: 4mm (Mechanical And Optical Surface Detection)  
Electronics: DAE3 Sn516; Calibrated: 2005/03/10  
Phantom: SAM 1196  
Measurement SW: DASYS4, V4.5 Build 19; Postprocessing SW: SEMCAD, V1.8 Build 145

**Area Scan (51x51x1):** Measurement grid: dx=20mm, dy=20mm  
Maximum value of SAR (interpolated) = 21.5 mW/g

**Zoom Scan (5x5x7)/Cube 0:** Measurement grid: dx=8mm, dy=8mm, dz=5mm  
Reference Value = 96.6 V/m; Power Drift = 0.023 dB  
Peak SAR (extrapolated) = 27.8 W/kg

**SAR(1 g) = 13.6 mW/g; SAR(10 g) = 6.32 mW/g**  
Maximum value of SAR (measured) = 15.2 mW/g

Test Date = 05/30/05  
Ambient Temperature = 25.0 degree.C.  
Liquid Temperature = Before 24.2 degree.C. , After 24.2 degree.C.



---

**UL Apex Co., Ltd.**

**Head Office EMC Lab.**

4383-326 Asama-cho, Ise-shi, Mie-ken 516-0021 JAPAN  
Telephone: +81 596 24 8116  
Facsimile: +81 596 24 8124

**APPENDIX 5 : System Validation Dipole (D2450V2,S/N: 713)**

---

**UL Apex Co., Ltd.**

**Head Office EMC Lab.**

4383-326 Asama-cho, Ise-shi, Mie-ken 516-0021 JAPAN

Telephone: +81 596 24 8116

Facsimile: +81 596 24 8124

**Calibration Laboratory of  
 Schmid & Partner  
 Engineering AG**  
 Zeughausstrasse 43, 8004 Zurich, Switzerland



**S** Schweizerischer Kalibrierdienst  
**S** Service suisse d'étalonnage  
**C** Servizio svizzero di taratura  
**S** Swiss Calibration Service

Accredited by the Swiss Federal Office of Metrology and Accreditation  
 The Swiss Accreditation Service is one of the signatories to the EA  
 Multilateral Agreement for the recognition of calibration certificates

Accreditation No.: **SCS 108**

Client **UL A-Pex (MTT)**

Certificate No: **D2450V2-713\_Dec04**

## CALIBRATION CERTIFICATE

Object **D2450V2 - SN: 713**

Calibration procedure(s) **QA CAL-05.v6  
 Calibration procedure for dipole validation kits**

Calibration date: **December 13, 2004**

Condition of the calibrated item **In Tolerance**

This calibration certificate documents the traceability to national standards, which realize the physical units of measurements (SI).  
 The measurements and the uncertainties with confidence probability are given on the following pages and are part of the certificate.

All calibrations have been conducted in the closed laboratory facility: environment temperature (22 ± 3)°C and humidity < 70%.

Calibration Equipment used (M&TE critical for calibration)

Primary Standards	ID #	Cal Date (Calibrated by, Certificate No.)	Scheduled Calibration
Power meter EPM E442	GB37480704	12-Oct-04 (METAS, No. 251-00412)	Oct-05
Power sensor HP 8481A	US37292783	12-Oct-04 (METAS, No. 251-00412)	Oct-05
Reference 20 dB Attenuator	SN: 5086 (20g)	10-Aug-04 (METAS, No 251-00402)	Aug-05
Reference 10 dB Attenuator	SN: 5047.2 (10r)	10-Aug-04 (METAS, No 251-00402)	Aug-05
Reference Probe ES3DV2	SN 3025	29-Oct-04 (SPEAG, No. ES3-3025_Oct04)	Oct-05
DAE4	SN 601	22-Jul-04 (SPEAG, No. DAE4-601_Jul04)	Jul-05
Secondary Standards	ID #	Check Date (in house)	Scheduled Check
Power sensor HP 8481A	MY41092317	18-Oct-02 (SPEAG, in house check Oct-03)	In house check: Oct-05
RF generator R&S SML-03	100698	27-Mar-02 (SPEAG, in house check Dec-03)	In house check: Dec-05
Network Analyzer HP 8753E	US37390585 S4206	18-Oct-01 (SPEAG, in house check Nov-04)	In house check: Nov-05

Calibrated by:	Name <b>Mike Meili</b>	Function <b>Laboratory Technician</b>	Signature 
Approved by:	Name <b>Katja Pokovic</b>	Function <b>Technical Manager</b>	Signature 

Issued: December 15, 2004

This calibration certificate shall not be reproduced except in full without written approval of the laboratory.

**UL Apex Co., Ltd.**

**Head Office EMC Lab.**

4383-326 Asama-cho, Ise-shi, Mie-ken 516-0021 JAPAN

Telephone: +81 596 24 8116

Facsimile: +81 596 24 8124

Test report No. : 25EE0208-HO-3B  
Page : 101 of 119  
Issued date : June 17, 2005  
Revised date : June 29, 2005  
FCC ID : CGJCXPI

---

---

**UL Apex Co., Ltd.**

**Head Office EMC Lab.**

4383-326 Asama-cho, Ise-shi, Mie-ken 516-0021 JAPAN

Telephone: +81 596 24 8116

Facsimile: +81 596 24 8124

**Calibration Laboratory of  
Schmid & Partner  
Engineering AG**  
Zeughausstrasse 43, 8004 Zurich, Switzerland



**S** Schweizerischer Kalibrierdienst  
**S** Service suisse d'étalonnage  
**C** Servizio svizzero di taratura  
**S** Swiss Calibration Service

Accredited by the Swiss Federal Office of Metrology and Accreditation  
The Swiss Accreditation Service is one of the signatories to the EA  
Multilateral Agreement for the recognition of calibration certificates

Accreditation No.: **SCS 108**

**Glossary:**

TSL tissue simulating liquid  
ConvF sensitivity in TSL / NORM x,y,z  
N/A not applicable or not measured

**Calibration is Performed According to the Following Standards:**

- a) IEEE Std 1528-2003, "IEEE Recommended Practice for Determining the Peak Spatial-Averaged Specific Absorption Rate (SAR) in the Human Head from Wireless Communications Devices: Measurement Techniques", December 2003
- b) CENELEC EN 50361, "Basic standard for the measurement of Specific Absorption Rate related to human exposure to electromagnetic fields from mobile phones (300 MHz - 3 GHz), July 2001
- c) Federal Communications Commission Office of Engineering & Technology (FCC OET), "Evaluating Compliance with FCC Guidelines for Human Exposure to Radiofrequency Electromagnetic Fields; Additional Information for Evaluating Compliance of Mobile and Portable Devices with FCC Limits for Human Exposure to Radiofrequency Emissions", Supplement C (Edition 01-01) to Bulletin 65

**Additional Documentation:**

- d) DASY4 System Handbook

**Methods Applied and Interpretation of Parameters:**

- *Measurement Conditions:* Further details are available from the Validation Report at the end of the certificate. All figures stated in the certificate are valid at the frequency indicated.
- *Antenna Parameters with TSL:* The dipole is mounted with the spacer to position its feed point exactly below the center marking of the flat phantom section, with the arms oriented parallel to the body axis.
- *Feed Point Impedance and Return Loss:* These parameters are measured with the dipole positioned under the liquid filled phantom. The impedance stated is transformed from the measurement at the SMA connector to the feed point. The Return Loss ensures low reflected power. No uncertainty required.
- *Electrical Delay:* One-way delay between the SMA connector and the antenna feed point. No uncertainty required.
- *SAR measured:* SAR measured at the stated antenna input power.
- *SAR normalized:* SAR as measured, normalized to an input power of 1 W at the antenna connector.
- *SAR for nominal TSL parameters:* The measured TSL parameters are used to calculate the nominal SAR result.

**UL Apex Co., Ltd.**

**Head Office EMC Lab.**

4383-326 Asama-cho, Ise-shi, Mie-ken 516-0021 JAPAN  
Telephone: +81 596 24 8116  
Facsimile: +81 596 24 8124



## Measurement Conditions

DASY system configuration, as far as not given on page 1.

<b>DASY Version</b>	DASY4	V4.4
<b>Extrapolation</b>	Advanced Extrapolation	
<b>Phantom</b>	Modular Flat Phantom V5.0	
<b>Distance Dipole Center - TSL</b>	10 mm	with Spacer
<b>Area Scan resolution</b>	dx, dy = 15 mm	
<b>Zoom Scan Resolution</b>	dx, dy, dz = 5 mm	
<b>Frequency</b>	2450 MHz $\pm$ 1 MHz	

## Head TSL parameters

The following parameters and calculations were applied.

	Temperature	Permittivity	Conductivity
<b>Nominal Head TSL parameters</b>	22.0 °C	39.2	1.80 mho/m
<b>Measured Head TSL parameters</b>	(23.0 $\pm$ 0.2) °C	38.3 $\pm$ 6 %	1.86 mho/m $\pm$ 6 %
<b>Head TSL temperature during test</b>	(23.0 $\pm$ 0.2) °C	----	----

## SAR result with Head TSL

<b>SAR averaged over 1 cm<sup>3</sup> (1 g) of Head TSL</b>	condition	
SAR measured	250 mW input power	13.8 mW / g
SAR normalized	normalized to 1W	55.2 mW / g
SAR for nominal Head TSL parameters <sup>1</sup>	normalized to 1W	<b>53.9 mW / g <math>\pm</math> 17.0 % (k=2)</b>

<b>SAR averaged over 10 cm<sup>3</sup> (10 g) of Head TSL</b>	condition	
SAR measured	250 mW input power	6.29 mW / g
SAR normalized	normalized to 1W	25.2 mW / g
SAR for nominal Head TSL parameters <sup>1</sup>	normalized to 1W	<b>24.6 mW / g <math>\pm</math> 16.5 % (k=2)</b>

<sup>1</sup> Correction to nominal TSL parameters according to d), chapter "SAR Sensitivities"

### Body TSL parameters

The following parameters and calculations were applied.

	Temperature	Permittivity	Conductivity
Nominal Body TSL parameters	22.0 °C	52.7	1.95 mho/m
Measured Body TSL parameters	(23.0 ± 0.2) °C	51.7 ± 6 %	1.96 mho/m ± 6 %
Body TSL temperature during test	(23.0 ± 0.2) °C	----	----

### SAR result with Body TSL

SAR averaged over 1 cm <sup>3</sup> (1 g) of Head TSL	condition	
SAR measured	250 mW input power	13.5 mW / g
SAR normalized	normalized to 1W	54.0 mW / g
SAR for nominal Body TSL parameters <sup>2</sup>	normalized to 1W	<b>53.2 mW / g ± 17.0 % (k=2)</b>

SAR averaged over 10 cm <sup>3</sup> (10 g) of Head TSL	condition	
SAR measured	250 mW input power	6.22 mW / g
SAR normalized	normalized to 1W	24.9 mW / g
SAR for nominal Body TSL parameters <sup>1</sup>	normalized to 1W	<b>24.5 mW / g ± 16.5 % (k=2)</b>

<sup>2</sup> Correction to nominal TSL parameters according to d), chapter "SAR Sensitivities"

---

## Appendix

### Antenna Parameters with Head TSL

Impedance, transformed to feed point	51.8 $\Omega$ + 2.0 j $\Omega$
Return Loss	- 31.6 dB

### Antenna Parameters with Body TSL

Impedance, transformed to feed point	47.8 $\Omega$ + 2.7 j $\Omega$
Return Loss	- 29.0 dB

### General Antenna Parameters and Design

Electrical Delay (one direction)	1.160 ns
----------------------------------	----------

After long term use with 100W radiated power, only a slight warming of the dipole near the feedpoint can be measured.

The dipole is made of standard semirigid coaxial cable. The center conductor of the feeding line is directly connected to the second arm of the dipole. The antenna is therefore short-circuited for DC-signals.

No excessive force must be applied to the dipole arms, because they might bend or the soldered connections near the feedpoint may be damaged.

### Additional EUT Data

Manufactured by	SPEAG
Manufactured on	July 5, 2002

## DASY4 Validation Report for Head TSL

Date/Time: 12/13/04 21:25:09

Test Laboratory: SPEAG, Zurich, Switzerland

**DUT: Dipole 2450 MHz; Type: D2450V2; Serial: D2450V2 - SN713**

Communication System: CW-2450; Frequency: 2450 MHz; Duty Cycle: 1:1

Medium: HSL 2450 MHz;

Medium parameters used:  $f = 2450$  MHz;  $\sigma = 1.86$  mho/m;  $\epsilon_r = 38.3$ ;  $\rho = 1000$  kg/m<sup>3</sup>

Phantom section: Flat Section

Measurement Standard: DASY4 (High Precision Assessment)

DASY4 Configuration:

- Probe: ES3DV2 - SN3025; ConvF(4.4, 4.4, 4.4); Calibrated: 29.10.2004
- Sensor-Surface: 4mm (Mechanical Surface Detection)
- Electronics: DAE4 Sn601; Calibrated: 22.07.2004
- Phantom: Flat Phantom quarter size -SN:1001; Type: QD000P50AA; Serial: SN:1001;
- Measurement SW: DASY4, V4.4 Build 3; Postprocessing SW: SEMCAD, V1.8 Build 130

**Pin = 250 mW; d = 10 mm/Area Scan (81x81x1):** Measurement grid: dx=15mm, dy=15mm  
Maximum value of SAR (interpolated) = 15.7 mW/g

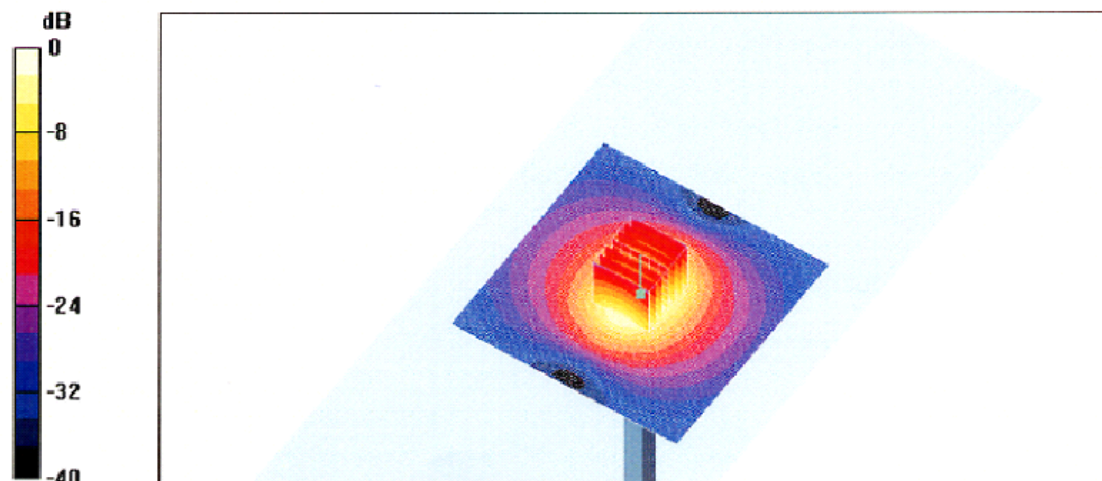
**Pin = 250 mW; d = 10 mm/Zoom Scan (7x7x7)/Cube 0:** Measurement grid: dx=5mm, dy=5mm, dz=5mm

Reference Value = 93.8 V/m; Power Drift = 0.0 dB

Peak SAR (extrapolated) = 29.4 W/kg

**SAR(1 g) = 13.8 mW/g; SAR(10 g) = 6.29 mW/g**

Maximum value of SAR (measured) = 15.7 mW/g



0 dB = 15.7 mW/g

**UL Apex Co., Ltd.**

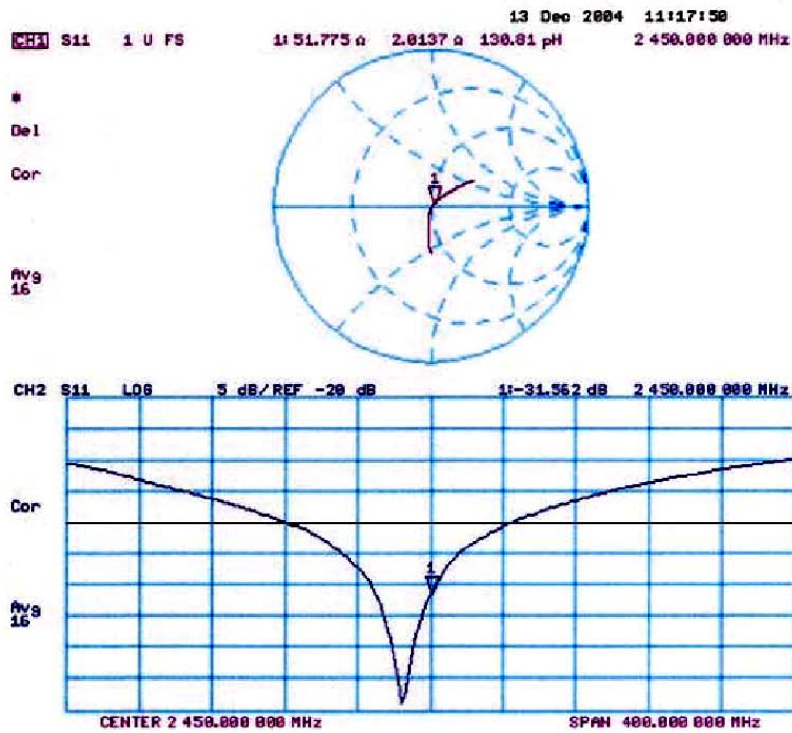
**Head Office EMC Lab.**

4383-326 Asama-cho, Ise-shi, Mie-ken 516-0021 JAPAN

Telephone: +81 596 24 8116

Facsimile: +81 596 24 8124

### Impedance Measurement Plot for Head TSL



**UL Apex Co., Ltd.**

**Head Office EMC Lab.**

4383-326 Asama-cho, Ise-shi, Mie-ken 516-0021 JAPAN

Telephone: +81 596 24 8116

Facsimile: +81 596 24 8124



## DASY4 Validation Report for Body TSL

Date/Time: 12/10/04 14:05:10

Test Laboratory: SPEAG, Zurich, Switzerland

**DUT: Dipole 2450 MHz; Type: D2450V2; Serial: D2450V2 - SN713**

Communication System: CW-2450; Frequency: 2450 MHz; Duty Cycle: 1:1

Medium: MSL 2450 MHz;

Medium parameters used:  $f = 2450$  MHz;  $\sigma = 1.96$  mho/m;  $\epsilon_r = 51.7$ ;  $\rho = 1000$  kg/m<sup>3</sup>

Phantom section: Flat Section

Measurement Standard: DASY4 (High Precision Assessment)

DASY4 Configuration:

- Probe: ES3DV2 - SN3025; ConvF(4.13, 4.13, 4.13); Calibrated: 29.10.2004
- Sensor-Surface: 4mm (Mechanical Surface Detection)
- Electronics: DAE4 Sn601; Calibrated: 22.07.2004
- Phantom: Flat Phantom quarter size -SN:1001; Type: QD000P50AA; Serial: SN:1001;
- Measurement SW: DASY4, V4.4 Build 3; Postprocessing SW: SEMCAD, V1.8 Build 130

**Pin = 250 mW; d = 10 mm/Area Scan (81x81x1):** Measurement grid: dx=15mm, dy=15mm

Maximum value of SAR (interpolated) = 15.4 mW/g

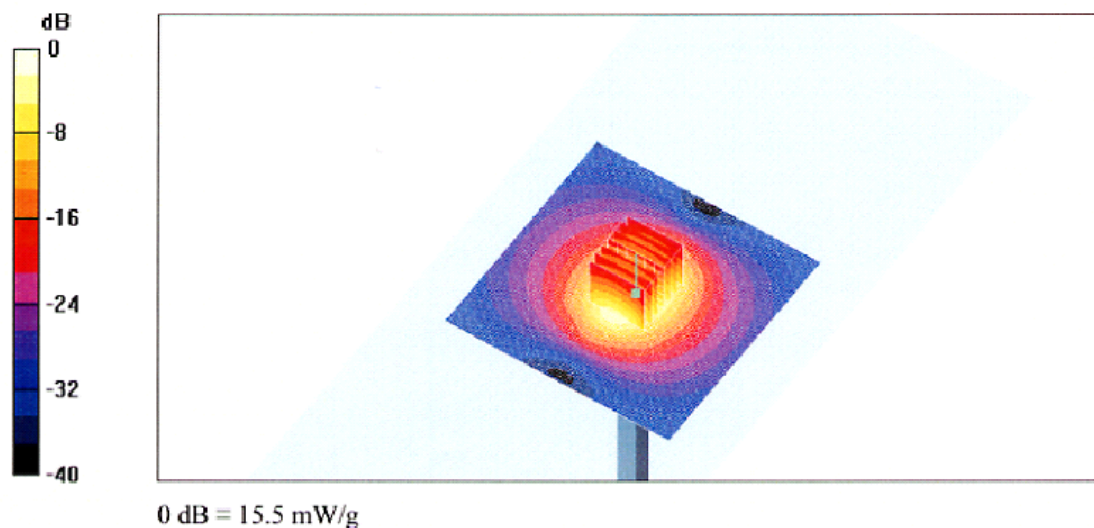
**Pin = 250 mW; d = 10 mm/Zoom Scan (7x7x7)/Cube 0:** Measurement grid: dx=5mm, dy=5mm, dz=5mm

Reference Value = 90 V/m; Power Drift = -0.0 dB

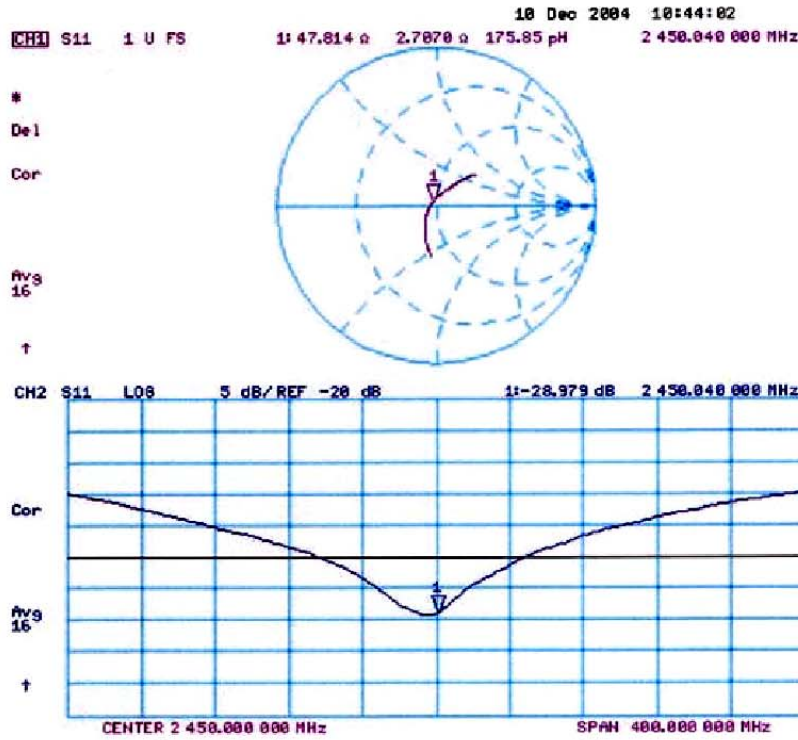
Peak SAR (extrapolated) = 27.7 W/kg

**SAR(1 g) = 13.5 mW/g; SAR(10 g) = 6.22 mW/g**

Maximum value of SAR (measured) = 15.5 mW/g



**Impedance Measurement Plot for Body TSL**



**APPENDIX 6 : Dosimetric E-Field Probe Calibration (ET3DV6,S/N: 1684)**

---

***UL Apex Co., Ltd.***

***Head Office EMC Lab.***

*4383-326 Asama-cho, Ise-shi, Mie-ken 516-0021 JAPAN*

*Telephone: +81 596 24 8116*

*Facsimile: +81 596 24 8124*

---

Schmid & Partner Engineering AG

**s p e a g**

Zeughausstrasse 43, 8004 Zurich, Switzerland  
Phone +41 1 245 9700, Fax +41 1 245 9779  
info@speag.com, http://www.speag.com

## IMPORTANT NOTICE

### USAGE OF PROBES IN ORGANIC SOLVENTS

Diethylene Glycol Monobuthy Ether (the basis for liquids above 1 GHz), as many other organic solvents, is a very effective softener for synthetic materials. These solvents can cause irreparable damage to certain SPEAG products, except those which are explicitly declared as compliant with organic solvents.

#### Compatible Probes:

- ET3DV6
- ET3DV6R
- ES3DVx
- ER3DV6
- H3DV6

#### Important Note for ET3DV6 Probes:

**The ET3DV6 probes shall not be exposed to solvents longer than necessary for the measurements and shall be cleaned daily after use with warm water and stored dry.**

**s p e a g**

Schmid & Partner Engineering AG  
Zeughausstrasse 43, 8004 Zurich, Switzerland  
Phone +41 1 245 9700, Fax +41 1 245 9779  
info@speag.com, http://www.speag.com

Schmid & Partner Engineering AG

Technical Note 01.06.15-1

June 2002

---

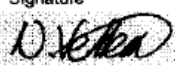

**UL Apex Co., Ltd.**

**Head Office EMC Lab.**

4383-326 Asama-cho, Ise-shi, Mie-ken 516-0021 JAPAN  
Telephone: +81 596 24 8116  
Facsimile: +81 596 24 8124

**Calibration Laboratory of  
 Schmid & Partner  
 Engineering AG**  
 Zeughausstrasse 43, 8004 Zurich, Switzerland

**Client** **UL A-Pac (MTI)**

CALIBRATION CERTIFICATE																																			
Object(s)	ET3DV6 - SN.1684																																		
Calibration procedure(s)	QA CAL-01 V2 Calibration procedure for dosimetric E-field probes																																		
Calibration date:	September 2, 2004																																		
Condition of the calibrated item	In Tolerance (according to the specific calibration document)																																		
<p>This calibration certificate documents the traceability to national standards, which realize the physical units of measurements (SI).            The measurements and the uncertainties with confidence probability are given on the following pages and are part of the certificate.</p> <p>All calibrations have been conducted in the closed laboratory facility: environment temperature 22 +/- 2 degrees Celsius and humidity &lt; 75%.</p> <p>Calibration Equipment used (M&amp;TE critical for calibration)</p> <table border="1"> <thead> <tr> <th>Model Type</th> <th>ID #</th> <th>Cal Date (Calibrated by, Certificate No.)</th> <th>Scheduled Calibration</th> </tr> </thead> <tbody> <tr> <td>Power meter EPM E4419B</td> <td>GB41293874</td> <td>5-May-04 (METAS, No 251-00388)</td> <td>May-05</td> </tr> <tr> <td>Power sensor E4412A</td> <td>MY41495277</td> <td>5-May-04 (METAS, No 251-00388)</td> <td>May-05</td> </tr> <tr> <td>Reference 20 dB Attenuator</td> <td>SN: 5086 (20b)</td> <td>3-May-04 (METAS, No 251-00389)</td> <td>May-05</td> </tr> <tr> <td>Fluke Process Calibrator Type 702</td> <td>SN: 6295803</td> <td>8-Sep-03 (Sintrel SCS No. E-030020)</td> <td>Sep-04</td> </tr> <tr> <td>Power sensor HP 8481A</td> <td>MY41092180</td> <td>18-Sep-02 (SPEAG, in house check Oct03)</td> <td>In house check: Oct 05</td> </tr> <tr> <td>RF generator HP 8684C</td> <td>US3642U01700</td> <td>4-Aug-99 (SPEAG, in house check Aug02)</td> <td>In house check: Aug05</td> </tr> <tr> <td>Network Analyzer HP 8753E</td> <td>US37390585</td> <td>18-Oct-01 (SPEAG, in house check Oct03)</td> <td>In house check: Oct 05</td> </tr> </tbody> </table>				Model Type	ID #	Cal Date (Calibrated by, Certificate No.)	Scheduled Calibration	Power meter EPM E4419B	GB41293874	5-May-04 (METAS, No 251-00388)	May-05	Power sensor E4412A	MY41495277	5-May-04 (METAS, No 251-00388)	May-05	Reference 20 dB Attenuator	SN: 5086 (20b)	3-May-04 (METAS, No 251-00389)	May-05	Fluke Process Calibrator Type 702	SN: 6295803	8-Sep-03 (Sintrel SCS No. E-030020)	Sep-04	Power sensor HP 8481A	MY41092180	18-Sep-02 (SPEAG, in house check Oct03)	In house check: Oct 05	RF generator HP 8684C	US3642U01700	4-Aug-99 (SPEAG, in house check Aug02)	In house check: Aug05	Network Analyzer HP 8753E	US37390585	18-Oct-01 (SPEAG, in house check Oct03)	In house check: Oct 05
Model Type	ID #	Cal Date (Calibrated by, Certificate No.)	Scheduled Calibration																																
Power meter EPM E4419B	GB41293874	5-May-04 (METAS, No 251-00388)	May-05																																
Power sensor E4412A	MY41495277	5-May-04 (METAS, No 251-00388)	May-05																																
Reference 20 dB Attenuator	SN: 5086 (20b)	3-May-04 (METAS, No 251-00389)	May-05																																
Fluke Process Calibrator Type 702	SN: 6295803	8-Sep-03 (Sintrel SCS No. E-030020)	Sep-04																																
Power sensor HP 8481A	MY41092180	18-Sep-02 (SPEAG, in house check Oct03)	In house check: Oct 05																																
RF generator HP 8684C	US3642U01700	4-Aug-99 (SPEAG, in house check Aug02)	In house check: Aug05																																
Network Analyzer HP 8753E	US37390585	18-Oct-01 (SPEAG, in house check Oct03)	In house check: Oct 05																																
Calibrated by:	Name Mica Veseli	Function Technician	Signature 																																
Approved by:	Name Kajsa Pokovic	Function Laboratory Director	Signature 																																
Date issued: September 2, 2004																																			
<p>This calibration certificate is issued as an intermediate solution until the accreditation process (based on ISO/IEC 17025 International Standard) for Calibration Laboratory of Schmid &amp; Partner Engineering AG is completed.</p>																																			



# Probe ET3DV6

SN:1684

Manufactured: April 3, 2002  
Last calibrated: November 20, 2002  
Recalibrated: September 2, 2004

**Calibrated for DASYS Systems**

(Note: non-compatible with DASYS2 system!)

ET3DV6 SN:1684

September 2, 2004

## DASY - Parameters of Probe: ET3DV6 SN:1684

Sensitivity in Free Space		Diode Compression <sup>A</sup>	
NormX	1.58 $\mu\text{V}/(\text{V}/\text{m})^2$	DCP X	96 mV
NormY	1.58 $\mu\text{V}/(\text{V}/\text{m})^2$	DCP Y	96 mV
NormZ	1.62 $\mu\text{V}/(\text{V}/\text{m})^2$	DCP Z	96 mV

### Sensitivity in Tissue Simulating Liquid (Conversion Factors)

Please see Page 7.

### Boundary Effect

Head                    900 MHz    Typical SAR gradient: 5 % per mm

Sensor Center to Phantom Surface Distance		3.7 mm	4.7 mm
SAR <sub>be</sub> [%]	Without Correction Algorithm	7.2	3.6
SAR <sub>be</sub> [%]	With Correction Algorithm	0.0	0.1

Head                    1800 MHz    Typical SAR gradient: 10 % per mm

Sensor Center to Phantom Surface Distance		3.7 mm	4.7 mm
SAR <sub>be</sub> [%]	Without Correction Algorithm	11.6	8.2
SAR <sub>be</sub> [%]	With Correction Algorithm	0.2	0.2

### Sensor Offset

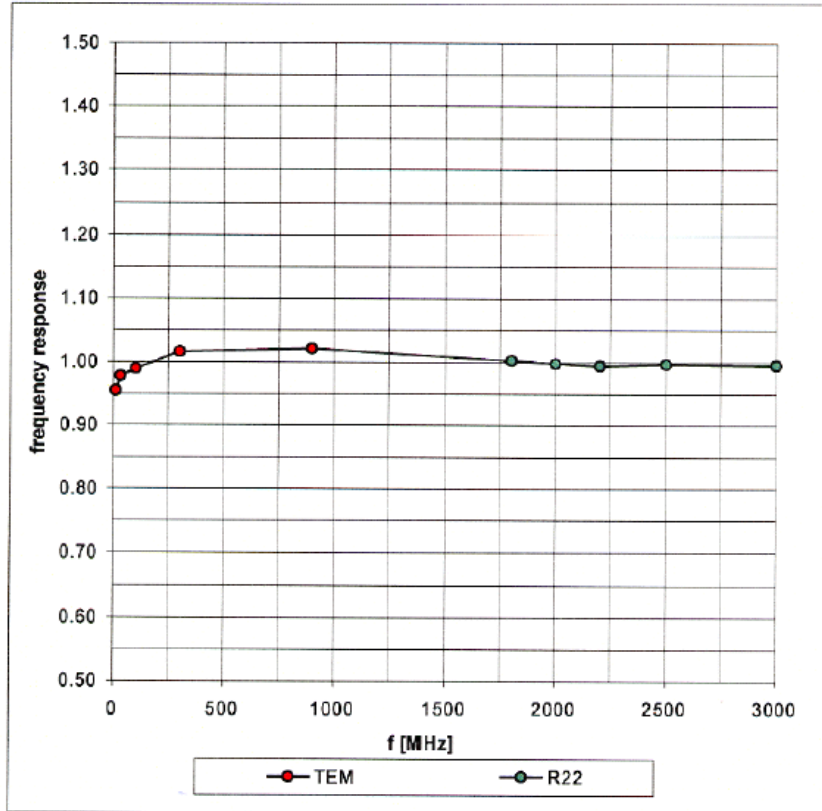
Probe Tip to Sensor Center	2.7 mm
Optical Surface Detection	in tolerance

The reported uncertainty of measurement is stated as the standard uncertainty of measurement multiplied by the coverage factor k=2, which for a normal distribution corresponds to a coverage probability of approximately 95%.

<sup>A</sup> numerical linearization parameter: uncertainty not required

## Frequency Response of E-Field

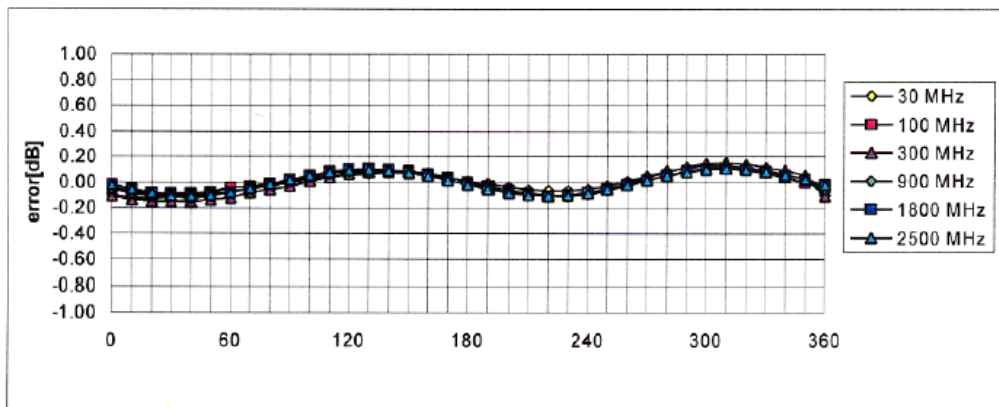
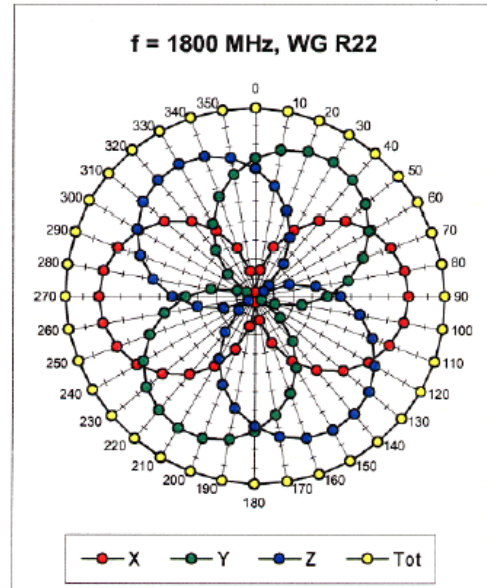
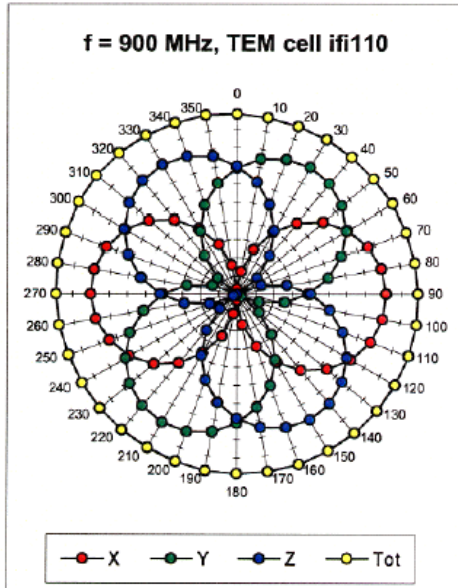
( TEM-Cell:ifi110, Waveguide R22)



ET3DV6 SN:1684

September 2, 2004

### Receiving Pattern ( $\phi$ ), $\theta = 0^\circ$



Axial Isotropy Error  $< \pm 0.2$  dB

**UL Apex Co., Ltd.**

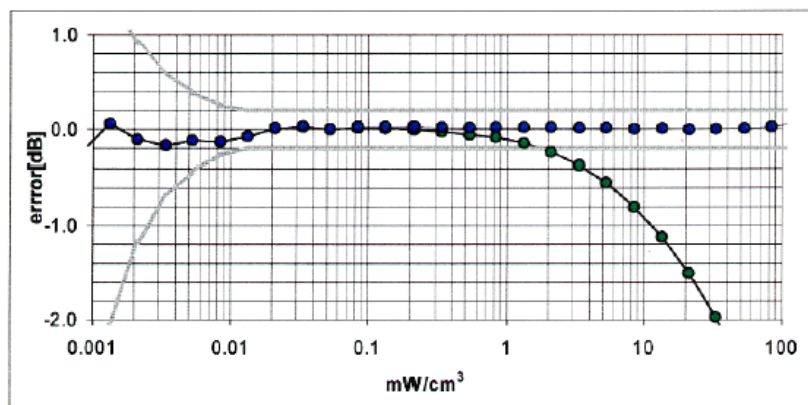
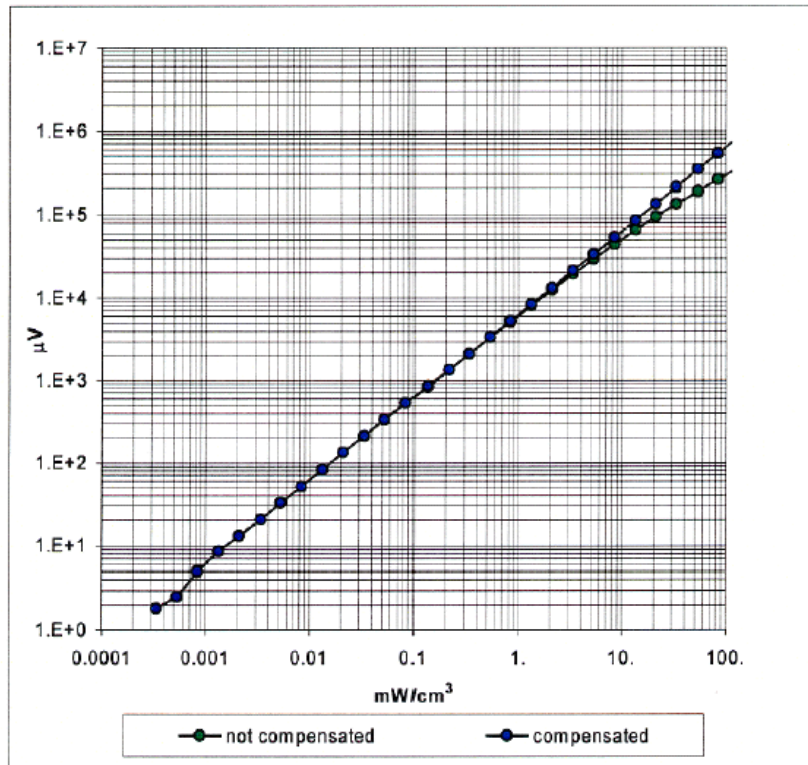
**Head Office EMC Lab.**

4383-326 Asama-cho, Ise-shi, Mie-ken 516-0021 JAPAN

Telephone: +81 596 24 8116

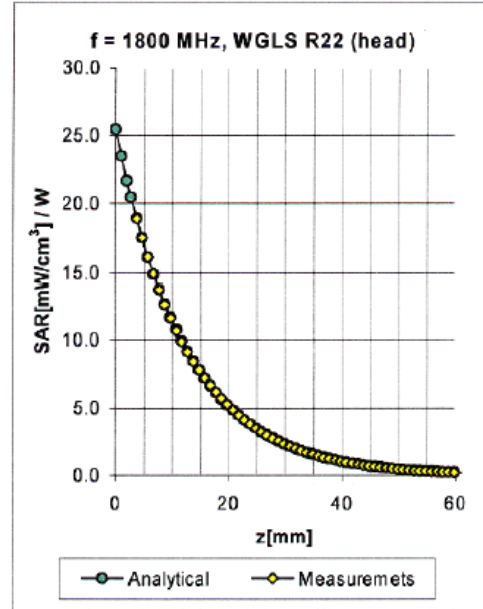
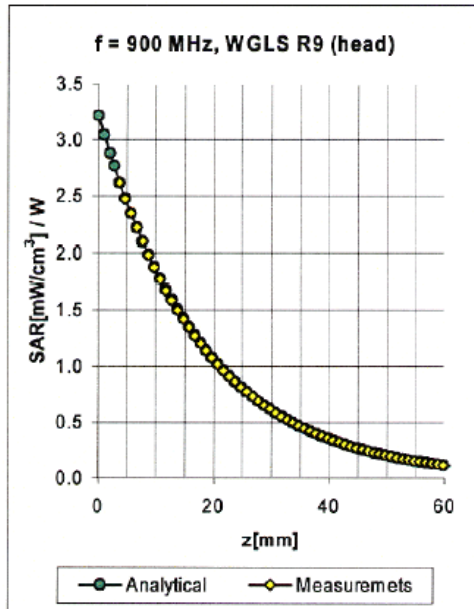
Facsimile: +81 596 24 8124

### Dynamic Range $f(\text{SAR}_{\text{head}})$ ( Waveguide R22 )



Probe Linearity Error  $< \pm 0.2$  dB

## Conversion Factor Assessment



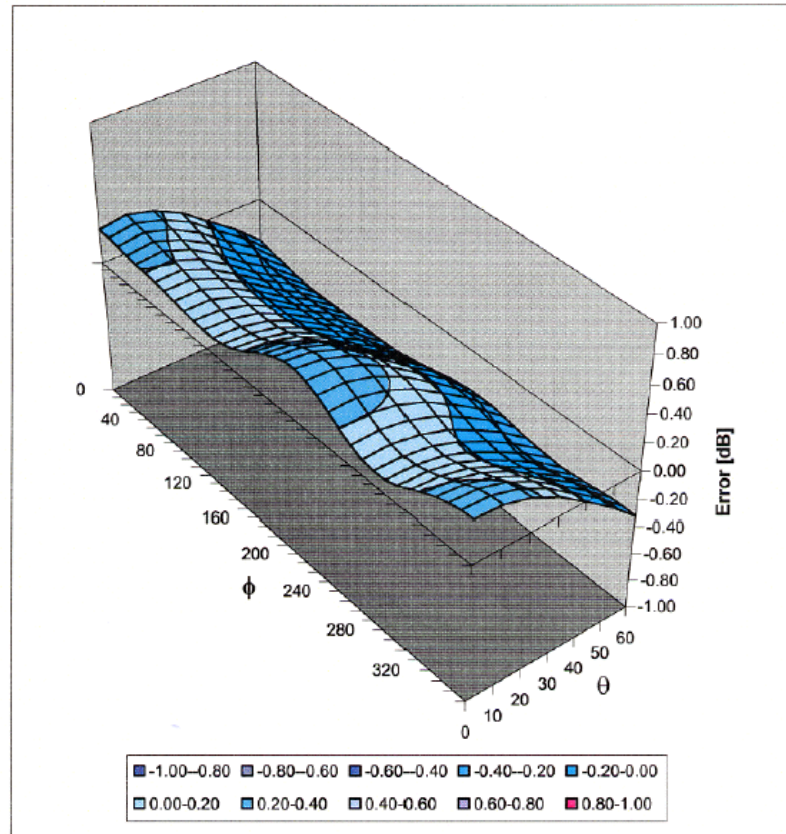
f [MHz]	Validity [MHz] <sup>B</sup>	Tissue	Permittivity	Conductivity	Alpha	Depth	ConvF Uncertainty
900	800-1000	Head	41.5 ± 5%	0.97 ± 5%	0.72	1.56	6.75 ± 11.3% (k=2)
1800	1710-1910	Head	40.0 ± 5%	1.40 ± 5%	0.40	2.81	5.27 ± 11.7% (k=2)
2450	2400-2500	Head	39.2 ± 5%	1.80 ± 5%	0.77	2.07	4.39 ± 9.7% (k=2)
900	800-1000	Body	55.0 ± 5%	1.05 ± 5%	0.40	2.32	6.28 ± 11.3% (k=2)
1800	1710-1910	Body	53.3 ± 5%	1.52 ± 5%	0.47	3.00	4.57 ± 11.7% (k=2)
2450	2400-2500	Body	52.7 ± 5%	1.95 ± 5%	0.82	1.85	4.14 ± 9.7% (k=2)

<sup>B</sup> The total standard uncertainty is calculated as root-sum-square of standard uncertainty of the Conversion Factor at calibration frequency and the standard uncertainty for the indicated frequency band.



## Deviation from Isotropy in HSL

Error ( $\theta$ ,  $\phi$ ),  $f = 900$  MHz



Spherical Isotropy Error  $< \pm 0.4$  dB