

Nikon

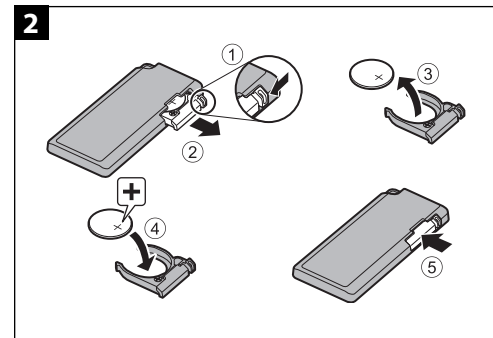
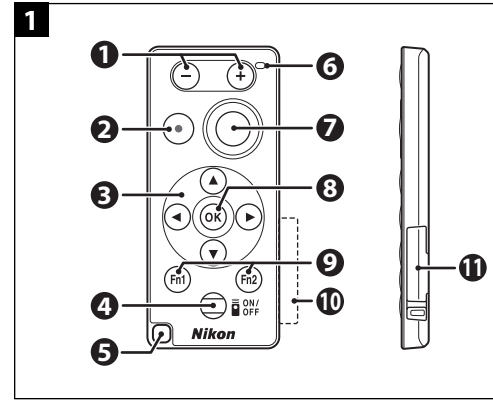
Printed in Japan
YP7H01(B)0
6MAJ0830-01

Remote Control N16F1 User's Manual

Model Name: N16F1

En Fr Es

NIKON CORPORATION



En Remote Control User's Manual (with Warranty)

You can perform remote operations such as recording movies or taking pictures by connecting the N16F1 Remote Control and a camera via Bluetooth® wireless technology. The operations that can be performed with the N16F1 Remote Control vary depending on the camera. For details, refer to the Reference Manual (PDF format) of your camera. The Reference Manual can be downloaded from our Download Center at the URL below: <http://downloadcenter.nikonimglib.com>

Compatible Cameras
See our website or brochures for information about the cameras that are compatible with the N16F1 Remote Control.

For Your Safety

To prevent damage to property or injury to yourself or to others, read "For Your Safety" in its entirety before using this product. Keep these safety instructions where all those who use this product will read them.

DANGER
Failure to observe the precautions marked with this icon carries a high risk of death or severe injury.

WARNING
Failure to observe the precautions marked with this icon could result in death or severe injury.

CAUTION
Failure to observe the precautions marked with this icon could result in injury or property damage.

WARNING

- **Do not use while walking or operating a vehicle.** Failure to observe this precaution could result in accidents or other injury.
- **Do not disassemble or modify this product.** Do not touch internal parts that become exposed as the result of a fall or other accident. Failure to observe these precautions could result in electric shock or other injury.
- **Should you notice any abnormalities such as the product producing smoke, heat, or unusual odors, immediately disconnect the batteries.** Continued operation could result in fire, burns or other injury.
- **Keep dry. Do not handle with wet hands.** Failure to observe these precautions could result in fire or electric shock.
- **Do not use this product in the presence of flammable dust or gas such as propane, gasoline or aerosols.** Failure to observe this precaution could result in explosion or fire.
- **Keep this product out of reach of children.** Failure to observe this precaution could result in injury or product malfunction. In addition, note that small parts constitute a choking hazard. *Should a child swallow any part of this product, seek immediate medical attention.*
- **Do not entangle, wrap or twist the straps around your neck.** Failure to observe this precaution could result in accidents.
- **Do not use batteries not specifically designated for use with this product.** Failure to observe this precaution could result in fire or electric shock.

CAUTION

- **Turn this product off when its use is prohibited.** Disable wireless features when the use of wireless equipment is prohibited. The radio-frequency emissions produced by this product could interfere with equipment onboard aircraft or in hospitals or other medical facilities.
- **Remove the batteries if this product will not be used for an extended period.** Failure to observe this precaution could result in fire or product malfunction.
- **Do not leave the product where it will be exposed to extremely high temperatures, for an extended period such as in an enclosed automobile or in direct sunlight.** Failure to observe this precaution could result in fire or product malfunction.

DANGER for Batteries

- **Do not mishandle batteries.** Failure to observe the following precautions could result in the batteries leaking, overheating, rupturing, or catching fire:
 - Do not expose batteries to flame or excessive heat.
 - Do not disassemble.
 - Do not short-circuit the terminals by touching them to necklaces, hairpins, or other metal objects.
 - Do not expose batteries or the products in which they are inserted to powerful physical shocks.
- **If battery liquid comes into contact with the eyes, rinse with plenty of clean water and seek immediate medical attention.** Delaying action could result in eye injuries.

WARNING for Batteries

- **Keep batteries out of reach of children.** *Should a child swallow a battery, seek immediate medical attention.*
- **Do not immerse batteries in water or expose to rain.** Failure to observe this precaution could result in fire or product malfunction. Immediately dry the product with a towel or similar object should it become wet.
- **Discontinue use immediately should you notice any changes in the batteries, such as discoloration or deformation.** Failure to observe this precaution could result in the batteries leaking, overheating, rupturing, or catching fire.
- **Insert batteries in the correct orientation.** Failure to observe this precaution could result in the batteries leaking, overheating, rupturing, or catching fire.
- **Prior to disposal, insulate battery terminals with tape.** Overheating, rupture, or fire may result should metal objects come into contact with the terminals. Recycle or dispose of batteries in accord with local regulations.
- **If battery liquid comes into contact with a person's skin or clothing, immediately rinse the affected area with plenty of clean water.** Failure to observe this precaution could result in skin irritation.

Notices

- No part of this manual may be reproduced, transmitted, transcribed, stored in a retrieval system, or translated into any language in any form, by any means, without Nikon's prior written permission.
- While every effort has been made to ensure that the information in this manual is accurate and complete, we would appreciate it

were you to bring any errors or omissions to the attention of the Nikon representative in your area (address provided separately).

Precautions for Use

- Do not drop the remote control, strike it against a hard object such as a rock, or expose it to water.
- Do not insert a wet battery in the remote control. Do not pull out the battery holder when the remote control or your hands are wet. Doing so may cause water to seep inside the remote control and result in a malfunction.
- If moisture such as water droplets or a foreign substance adheres to the outside of the remote control or the battery holder, immediately wipe it off with a soft dry cloth.
- Make sure that the battery holder is securely inserted.
- Do not leave the remote control in cold conditions or in hot conditions of 40°C (104°F) or more for a long period of time.
- Do not suddenly bring the remote control to high-humidity environment if it is exposed to extreme cold for an extended period. Condensation may form inside the remote control.

About Radio Wave Interference

If there is any radio wave interference, the response of the remote control may be delayed.

Caring for the Product

- If moisture such as water droplets or a foreign substance adheres to the remote control, wipe it off with a soft dry cloth.
- Do not use alcohol, thinner or other volatile chemicals.

Parts and Functions of the Remote Control (Figure 1)

- ① – button/▲ button: Performs operations such as zoom control.
- ② Movie record button: Starts/stops movie recording.
- ③ Multi selector: Functions similarly to the multi selector on the camera. Can be used for manual focus adjustment or item selection.
- ④ Power button: Press the button to turn on the remote control and search for the camera that has already been paired. Keep holding down the button (for at least 3 seconds) to search for a camera that is not currently paired with the remote control. While the remote control is on, press the button to turn it off.
- ⑤ Strap eyelet (straps not included)
- ⑥ Status lamp: Indicates the remote control status or shooting session status, based on the color and behavior of the lamp. See "Status Lamp on the Remote Control" for more information.
- ⑦ Shutter-release button: Functions similarly to the shutter-release button on the camera.
 - Half-press and press-and-hold operations are not available.
 - When using the self-timer, you can press the button during the countdown to cancel shooting.
- ⑧ (apply selection) button: Functions similarly to the (apply selection) button on the camera.
- ⑨ Fn1 button/Fn2 button: Functions assigned to the Fn1 button/Fn2 button on the remote control via the camera can be used. (These buttons are not equivalent to the Fn buttons on the camera.)
- ⑩ Battery insulation sheet: Remove this when using the remote control for the first time.
- ⑪ Battery holder

About the Remote Control

The functions that you can perform using the remote control may vary depending on the camera. See the manual of your camera for further details.

How to Use

This section describes how to use the product with the COOPIX Digital Camera as an example. Since operations may vary depending on the camera, see the manual of your camera for further details.

Pairing the Remote Control and Camera

Before using the remote control for the first time, it must be paired with the camera.

- In this manual, "pairing" refers to the process of mutual authentication that is performed between Bluetooth devices to establish a connection.
- Only one camera can be paired with the remote control at a time. When another camera is paired with the remote control, the pairing information kept on the remote control is replaced by that of the newly paired camera.

- 1 Enable pairing on the camera.**
 - Network menu on the camera → Choose connection → Remote control → (apply selection) button → Network menu on the camera → Connection to remote → (apply selection) button

- 2 Press and hold (for at least 3 seconds) the power button on the remote control.**
 - Pairing starts for the remote control and camera. While the process is being performed, the status lamp on the remote control flashes quickly (about every 0.5 second).
 - When pairing is complete, the remote control and camera are connected. The (apply selection) icon is displayed on the shooting screen of the camera.
 - If a pairing failure message is displayed, perform the procedure again from step 1.
 - To turn off the remote control, press the power button on the remote control.

Connecting to a Paired Camera

If the camera has already been paired with the remote control, a connection can be established simply by pressing the power button on the remote control. In this case, do not press and hold the button.

- Before establishing the connection, turn on the camera and select Remote control in Choose connection in the network menu.
- If the connection is not established properly, check the camera settings and turn the remote control off and back on again.
- A camera that was previously paired with the remote control needs to be paired again if another camera is paired with the remote control or if the camera settings are reset.

Auto Off Function of the Remote Control

The remote control automatically turns off in the following situations:

- When no pairing device has been detected for 1 minute
- When the wireless connection is interrupted and not restored within 1 minute
- When another device is selected as the pairing device on the camera

Press and hold the power button to try re-pairing or check the pairing settings on the camera.

Status Lamp on the Remote Control

Color	Status	Description
Green	Flashing about every second	Remote control is searching for device that has already been paired.
Green	Flashing quickly (about every 0.5 second)	Pairing process is being performed.

Color	Status	Description
Green	Flashing about every 3 seconds	Connection is established between remote control and camera.
Orange	Flashes once	Still image shooting starts.
Orange	Flashes twice	Still image shooting ends (e.g. shooting with the Time setting).
Red	Flashes once	Movie recording starts.
Red	Flashes twice	Movie recording ends.

* The information may vary depending on the camera.

Replacing the Battery

As shown in Figure 2, pull out the battery holder and replace the battery while making sure that the positive and negative sides of the battery are in the correct orientation.

Specifications

N16F1 Remote Control

Compatible battery*: 3V CR2032 (DL2032/S004L) lithium battery
Battery life: About 1 year (200 remote shooting operations per day)²
Bluetooth
Communication protocols: Bluetooth Specification Version 4.1
Communication distance (line of sight): Approx. 10 m (10 yd)³
Operating frequency: 2402–2480 MHz
Maximum output power: 4.17 dBm (EIRP)
Operating environment
Temperature: 0°C–40°C (32°F–104°F)
Humidity: 85% or less (no condensation)
Dimensions (W × H × D): Approx. 80.0 × 35.0 × 7.3 mm (3.2 × 1.4 × 0.3 in.) (excluding projections)
Weight: Approx. 18 g (0.7 oz) (including battery)

- ¹ The included battery is for trial use.
- ² Varies with the operating environment, operating conditions, and storage conditions.
- ³ No interference is assumed; range may vary with signal strength and presence or absence of obstacles.

- Nikon will not be held liable for any errors this manual may contain.
- The appearance of this product and its specifications are subject to change without notice.

Trademark Information

The Bluetooth® word mark and logos are registered trademarks owned by Bluetooth SIG, Inc. and any use of such marks by Nikon Corporation is under license.

Notes About Wireless Communication Functions

Restrictions on Wireless Devices

The wireless transceiver included in this product conforms to wireless regulations in the country of sale and is not for use in other countries (products purchased in the EU or EFTA can be used anywhere within the EU and EFTA). Nikon does not accept liability for use in other countries. Users who are unsure as to the original country of sale should consult with their local Nikon service center or Nikon-authorized service representative. This restriction applies to wireless operation only and not to any other use of the product.

Precautions when Exporting or Carrying This Product Abroad

This product is controlled by the United States Export Administration Regulations (EAR). The permission of the United States government is not required for export to countries other than the following, which as of this writing are subject to embargo or special controls: Cuba, Iran, North Korea, Sudan, and Syria (list subject to change).

Notice for Customers in the U.S.A. and Canada

Federal Communications Commission (FCC) and Innovation, Science and Economic Development Canada (ISED)

Declaration of Conformity

This device complies with Part 15 of FCC Rules and Innovation, Science and Economic Development Canada licence-exempt RSS standard(s). Operation is subject to the following two conditions: (1) this device may not cause interference, and (2) this device must accept any interference, including interference that may cause undesired operation of this device.

FCC/ISED RF Exposure Statement

This transmitter must not be co-located or operated in conjunction with any other antenna or transmitter.

The available scientific evidence does not show that any health problems are associated with using low power wireless devices. There is no proof, however, that these low power wireless devices are absolutely safe. Low power wireless devices emit low levels of radio frequency energy (RF) in the microwave range while being used. Whereas high levels of RF can produce health effects (by heating tissue), exposure of low-level RF that does not produce heating effects causes no known adverse health effects. Many studies of low-level RF exposures have not found any biological effects. Some studies have suggested that some biological effects might occur, but such findings have not been confirmed by additional research. This product has been tested and found to comply with FCC/ISED radiation exposure limits set forth for an uncontrolled environment and meets the FCC radio frequency (RF) Exposure Guidelines and RSS-102 of the ISED radio frequency (RF) Exposure rules. Please refer to the SAR test report that was uploaded to FCC website.

Notices for Customers in the U.S.A.

Federal Communications Commission (FCC) Radio Frequency Interference Statement

This equipment has been tested and found to comply with the limits for a Class B digital device, pursuant to Part 15 of the FCC rules. These limits are designed to provide reasonable protection against harmful interference in a residential installation. This equipment generates, uses, and can radiate radio frequency energy and, if not installed and used in accordance with the instructions, may cause harmful interference to radio communications. However, there is no guarantee that interference will not occur in a particular installation. If this equipment does cause harmful interference to radio or television reception, which can be determined by turning the equipment off and on, the user is encouraged to try to correct the interference by one or more of the following measures:

- Reorient or relocate the receiving antenna.
- Increase the separation between the equipment and receiver.
- Connect the equipment into an outlet on a circuit different from that to which the receiver is connected.
- Consult the dealer or an experienced radio/television technician for help.

CAUTIONS

Modifications

The FCC requires the user to be notified that any changes or modifications made to this device that are not expressly approved by Nikon Corporation may void the user's authority to operate the equipment.

Nikon Inc.,
1300 Walt Whitman Road, Melville, New York 11747-3064, U.S.A.
Tel: 631-547-4200

Notice for Customers in Canada

CAN ICES-3 B / NMB-3 B