

7 Enter the following information.

- **Profile name:** Enter a name of up to 16 characters.
- **Profile type:** Choose **FTP server** to configure the camera for ftp (transfer mode only), or **Computer** to configure the camera for use with a computer in transfer (21), PC (26), and print (30) modes.
- **Interface type:** Choose **Ethernet only** if the network does not include wireless, or **Ethernet and Wireless** for wireless or wireless and Ethernet networks.

Click **Next**. When a new profile is created under

Windows XP Service Pack 2, the dialog shown in Step 8 will be displayed. With third-party LAN adapters or fixed IP addressing, or a profile created under Windows XP Service Pack 1 or Mac OS, proceed to Step 9 if **Ethernet and Wireless** is selected for interface type, or to Step 10 if **Ethernet only** is selected.



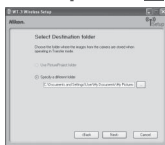
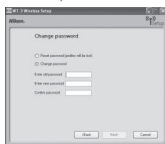
Help

Click the **Help** button for online help.

The “Select Action” Dialog

The other options in the “Select Action” dialog are described below. Note that the camera need not be connected to a computer to choose a printer or change the upload folder.

- **Change password:** The dialog shown at right will be displayed. By default, no password is required to change device profiles using the WT-3 Setup Utility. A password can be added by selecting **Change password**. If the camera is later connected to a different computer, a password prompt will be displayed. Once the correct password has been entered, the prompt will not be displayed again. To change an existing password, enter the old password before typing the new password. To remove the password, select **Reset password (profiles will be lost)** and click **Next**. Please note that resetting the password deletes all existing device profiles from the camera. Click **Back** to exit without changing password settings.
- **Setup wireless printer:** By default, the system default printer for the host computer will be used when printing pictures. To choose a different printer, select **Setup wireless printer** (17).
- **Setup picture folder:** The dialog shown at right will be displayed. Select a destination for uploaded pictures from the following options and click **Next**:



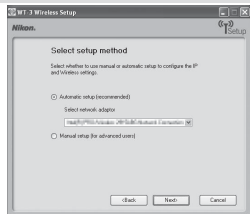
Use PictureProject folder: Pictures will be cataloged in PictureProject version 1.6.1 or later.

Specify a different folder: To choose a folder, click the  button.

The default destination is the “WT-3” folder in “My Pictures” (Windows) or “Pictures” (Macintosh).

8 Choose from the following options.

- **Automatic setup (recommended):** If more than one network adapter is available, choose an adapter from the pull-down menu (if **Ethernet only** is selected in Step 7, the menu will list Ethernet adapters only). Click **Next**. If **Ethernet and Wireless** was selected in Step 7 and the computer is configured for use with an existing infrastructure network, you will be prompted either to choose an existing infrastructure network or to set up a new ad-hoc network for use with the camera; select the desired option and click **Next**. If **FTP server** was selected in Step 7, proceed to Step 11. Otherwise proceed to Step 12.
- **Manual setup (for advanced users):** To adjust settings manually, select this option and click **Next**. If **Ethernet and Wireless** was selected in Step 7, proceed to Step 9. Otherwise proceed to Step 10.

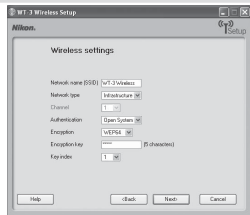


9 Enter wireless network settings and click **Next**.

- **Network name (SSID):** Enter a network name or choose from a list of existing networks (36). Do not change the name if it is supplied automatically.
- **Network type:** Infrastructure or ad-hoc (36).
- **Channel** (ad-hoc networks only): Choose the channel (1–13) used by the host. If channel 12 or 13 is selected for the WT-3A, channel 11 will be used instead.
- **Authentication:** Choose the type of authentication used by the computer or access point. The camera supports WPA-PSK, WPA2-PSK, open system, and shared key authentication. WPA-PSK and WPA2-PSK are available only in infrastructure mode.
- **Encryption:** Choose the type of encryption used on the network. Depending on the authentication used, the following types of encryption are available:
 - Open:** none, 64-bit WEP, 128-bit WEP **Shared:** 64-bit WEP, 128-bit WEP
 - WPA-PSK:** TKIP, AES **WPA2-PSK:** AES
- **Encryption key:** If the network uses encryption, enter the network key. The number of the characters required depends on the type of encryption used:

	WEP (64-bit)	WEP (128-bit)	TKIP, AES
Number of characters (ASCII)	5	13	8–63
Number of characters (hexadecimal)	10	26	64

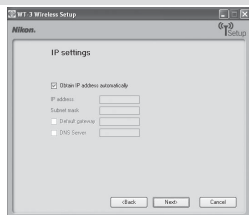
- **Key index:** In infrastructure networks that use WEP encryption, enter the host or access point key index. The default index is 1.



10 Enter network TCP/IP settings.

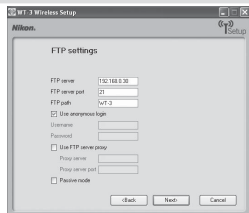
- **Obtain IP address automatically:** Select this option if the network is configured to supply IP addresses automatically. If the network does not include a DHCP server, addresses will be supplied by Auto IP (52).
- **IP address:** If the network is configured for manual IP addressing, enter an IP address for the WT-3.
- **Subnet mask:** If the network is configured for manual IP addressing, enter a subnet mask for the WT-3.
- **Default gateway:** If the network requires a gateway address, select this option and enter the address supplied by the network administrator. This option applies only if **FTP server** is selected for **Profile type** in Step 7.
- **DNS server:** If a Domain Name Server exists on the network, select this option and enter the address supplied by the network administrator. This option applies only if **FTP server** is selected for **Profile type** in Step 7.

Click **Next**. If **FTP server** was selected for **Profile type** in Step 7, the dialog shown in Step 11 will be displayed. Otherwise proceed to Step 12.



11 Enter ftp settings and click **Next**.

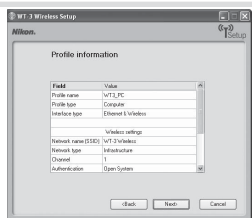
- **FTP server name:** Enter the URL or IP address of the ftp server.
- **FTP server port:** Enter the port number for the ftp server. The default is port 21.
- **FTP server path:** Choose the folder to which pictures will be uploaded. If no path is specified, pictures will be uploaded to the home directory.
- **Use anonymous login:** Select this option for anonymous login, or leave this option unchecked to supply a user name and password.
- **Use FTP server proxy:** If a proxy server is required for ftp, select this option and enter the server name and port number for the proxy server.
- **Passive mode:** Select this option to use PASV mode.



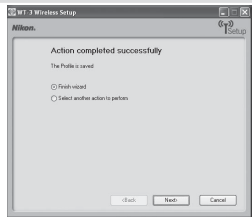
Ad-hoc Wireless Networks

Ad-hoc mode uses IP addresses beginning with 169.254. If the computer later becomes part of an infrastructure network, it must be reconfigured for automatic IP addressing and the camera wireless profile modified to reflect the new settings. Consult the network administrator for details.

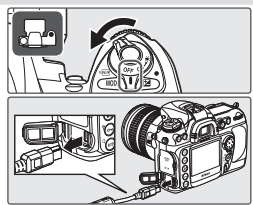
- 12 Network settings will be listed as shown at right. Click **Next** to proceed to Step 13, or **Back** to return to the previous step.



- 13 The dialog shown at right will be displayed. Select **Finish wizard** and click **Next** to exit the WT-3 Setup Utility and proceed to Step 14, or choose **Select another action to perform** and click **Next** to return to Step 5 (12) and add or edit profiles, change the password, choose a printer, or change the upload folder.

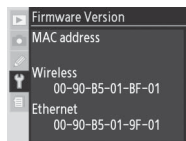


- 14 Turn the camera off and disconnect the USB cable.



MAC Address Filtering

If the network using MAC address filtering, the filter must be supplied with the MAC address of the WT-3. After attaching the WT-3 to the camera, choose **Firmware version > MAC address** from the camera setup menu and note the wireless and Ethernet MAC addresses.



Firewall Settings

The WT-3 uses TCP ports 20 and 21 for ftp and TCP port 15740 and UDP port 5353 when connecting to a computer. Computer firewalls must be configured to allow access to these ports, as otherwise the computer may not be able to access the WT-3.

Profiles

A separate profile must be created for each host and ftp server.

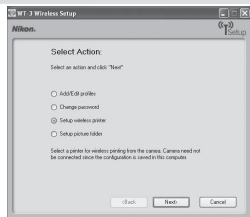
Creating a Printer Profile

The default printer for computer profiles (🔗 13) is the system printer for the host computer. To choose a different printer, start the WT-3 Setup Utility as described in Step 4 of “Copying Network Profiles to the Camera” (🔗 12; there is no need to connect the camera to the computer), then follow the steps below.

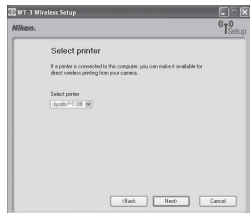
Using the PD-10

See “Printing Pictures Using the PD-10 Wireless Printer Adapter” (🔗 32) for more information on printing pictures using the PD-10.

- 1 Select **Setup wireless printer** in the “Select Action” dialog and click **Next**.



- 2 Choose a printer and click **Next**.
 - **Windows:** Select a printer from the pull-down menu. Printer settings can be adjusted in the Windows “Printer and Fax” dialog before printing.



- **Macintosh:** Click **Select Printer...** to choose a printer and adjust printer settings. Click **Print** to return to the WT-3 Setup Utility.



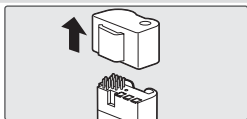
- 3 Exit the WT-3 Setup Utility and disconnect the camera as described in Steps 13–14 of “Copying Network Profiles to the Camera” (🔗 16).

Connecting the WT-3

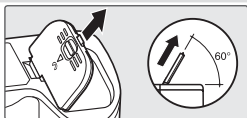
- 1 Turn the camera off and rotate the control lock on the WT-3 to the **L** position.



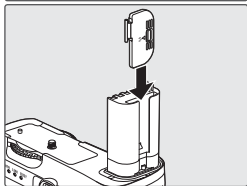
- 2 Remove the power connector cover from the WT-3 and attach it to the camera strap or store it in a safe place. Be sure to replace the power connector cover when the WT-3 is not in use.



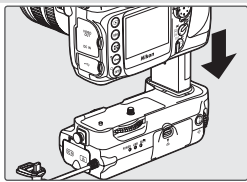
- 3 Open the camera battery chamber cover and remove the battery, then remove the battery chamber cover as shown at right.



Important: To ensure that the cover is not lost, place it in the WT-3 battery chamber cover holder.



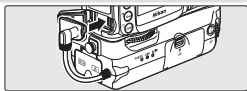
- 4 Insert the WT-3 into the camera battery chamber as shown.



- 5 Rotate the knob in the direction shown to fasten the WT-3 securely to the camera.



- 6 Open the camera USB connector cover and connect the USB cable from the WT-3 to the camera USB connector.



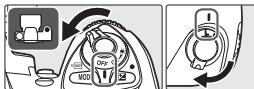
PB-6 Bellows

A PK-13 auto-extension ring and a PB-6D spacer are required when using PB-6 bellows with the WT-3.

Disconnecting the WT-3

To disconnect the WT-3:

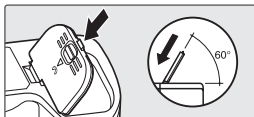
1 Rotate the WT-3 control lock to the **L** position and turn the camera off.



2 Disconnect the USB cable.

3 Rotate the knob clockwise to unscrew the WT-3 from the camera tripod mount and remove the WT-3 from the camera battery chamber.

4 Replace the camera battery chamber cover.



The Control Lock

Turn the camera off and rotate the WT-3 control lock to the **L** position when connecting or disconnecting the WT-3 or inserting or removing the battery.

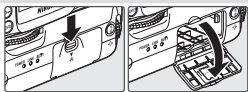
Inserting the Battery

To power the camera when the WT-3 is in place, insert the camera battery into the WT-3 battery chamber. The WT-3 takes one EN-EL3e rechargeable Li-ion battery; other batteries can not be used. Note that the drain on the battery is increased when the WT-3 is attached.

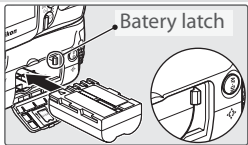
- 1 Turn the camera off and rotate the control lock on the WT-3 to the **L** position.



- 2 Open the battery chamber cover.



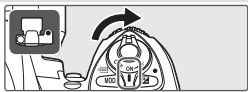
- 3 Insert the battery as shown on the inside of the battery chamber cover. The battery latch will slide aside during insertion and pop up to lock the battery in place when fully inserted.



- 4 Close the battery-chamber cover.

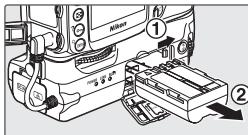


- 5 Turn the camera on and check the battery level in the control panel or viewfinder or using the **Battery Info** option in the camera setup menu.



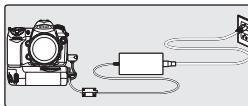
Removing the Battery

Being careful not to drop the battery, open the battery chamber cover and remove the battery as shown at right.



The EH-6 AC Adapter

The optional EH-6 AC adapter can also be used to power the camera when the WT-3 is connected. Connect the DC plug on the AC adapter to the WT-3 DC-IN connector, not to the camera.



Uploading Images: Transfer Mode

Choose transfer mode to upload photographs to a computer or ftp server. The principal steps are:

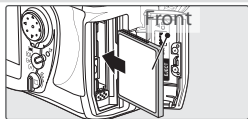
Connect to the host or ftp server..... 21–22

Upload images 23–25

Before connecting to the host, create a host profile using the WT-3 Setup Utility (11–16) and be sure that the host is running. Settings for connection for an ftp server can also be adjusted from the camera menus (48–50).

Connecting to the Host or ftp Server

- 1 Turn the camera off and insert the memory card containing the pictures to be sent.

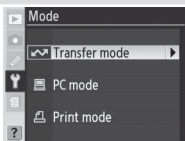


- 2 To access the network via Ethernet, connect the Ethernet cable (4). Note that wireless transfer is disabled while an Ethernet cable is connected. Disconnect the Ethernet cable before accessing a wireless network. Turn the camera off before connecting or disconnecting the Ethernet cable.

- 3 Turn the camera on.



- 4 Select **Transfer mode** for the **Wireless transmitter** > **Mode** option in the camera setup menu (34).




Choose PTP



Before connecting the WT-3, set the **USB** option in the camera setup menu to **PTP** (11).

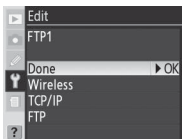
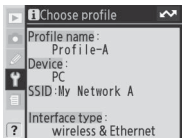
- 5 A list of available connection profiles will be displayed. Press the multi selector up or down to highlight the desired profile and press to the right to select.

Viewing Profile Information


Press the camera  button to view information on the selected profile.

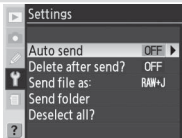
Editing ftp Server Profiles

If an ftp server profile is selected, ftp settings can be edited manually by pressing the camera  button. See the Menu Guide for more information ( 35).

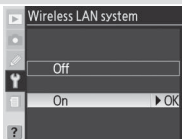



- 6 Choose **Settings** in **Wireless transmitter** menu to edit the following transfer options:

Option	Description	
Auto send	Upload photos as they are taken.	46
Delete after send?	Delete photos from camera memory card after upload.	46
Send file as	Send NEF + JPEG images as JPEG only or as NEF and JPEG.	46
Send folder	Upload all photos in selected folder.	47
Deselect all?	Deselect all images selected for upload.	47



- 7 Select **On** for **Wireless transmitter > Wireless LAN system** ( 34).



- 8 Confirm that the selected profile is displayed in green in the top level of the wireless transmitter menu. For information on what to do if an error is displayed, see "Troubleshooting" ( 51).

